

HERITAGE SCOPING REPORT: PROPOSED SOYUZ 4 SOLAR ENERGY FACILITY, OUTSIDE BRITSTOWN, NORTHERN CAPE PROVINCE

Assessment conducted under Section 38 (8) of the National Heritage Resources Act (No. 25 of 1999) as part of an Environmental Impact Assessment

Prepared for:

Terramanzi Group (Pty) Ltd

On behalf of:

Soyuz 4 Solar PV Park (Pty) Ltd

Draft for Comment: 3 February 2023



ACO Associates cc
Archaeology and Heritage Specialists

Prepared by

John Gribble (MA)

ACO Associates
5 Cannon Road, Plumstead, 7800
Phone 078 616 2961
Email: john.gribble@aco-associates.com

EXECUTIVE SUMMARY

ACO Associates cc was appointed by the Terramanzi Group (Pty) Ltd, on behalf of Soyuz 4 Solar PV Park (Pty) Ltd, to undertake a heritage scoping assessment for the proposed Soyuz 4 solar photovoltaic park south of Britstown in the Northern Cape.

This report provides heritage input for inclusion in the scoping report for the project and its associated infrastructure and its findings will feed into the heritage impact assessment that is likely to be required as part of the EIA that is to be undertaken for the project.

This report has relied on a range of primary and secondary information to provide a high-level assessment of the potential palaeontological, archaeological and historical built environment sensitivity of the development site. This was supplemented by a site inspection of the Britstown PV Cluster project areas conducted by ACO Associates between 7 and 11 January 2023. Together, these information sources have allowed a description of the heritage potential of the project site, the identification of potential heritage impacts and in some cases, the identification of sensitive areas that should be avoided, if possible, in the planning of the project.

Findings:

Input received from palaeontologist Dr Marion Bamford of the University of the Witwatersrand and reference to the geological mapping for the area indicates that the Soyuz 4 SPV park lies partly on sedimentary shales and sandstones of the Tierberg Formation and partly on much younger Tertiary limestones and Quaternary sands, both of which can preserve fossils. The SAHRA palaeo-sensitivity map characterises the development footprint as an area of high and moderate palaeontological sensitivity.

The January 2023 survey of the Soyuz 4 project footprint found very little archaeological material or other heritage resources in the flat grasslands that comprise the development site, which accords with what is known from the wider area. Archaeological sites tend to be found on and around the rocky outcrops and other features in the landscape like rivers, streams, springs, pans and sources of the stone raw material used for making tools.

There are no historical built structures within the Soyuz 4 project footprint but the historical Windpoort farmstead is just more than 200 m from the south-western corner of the SVP area.

No graves or burial grounds were recorded within the Soyuz 4 project footprint.

The cultural landscape within which the Soyuz 4 SPV park will be situated is not well developed but reflects the recent historical use of the land for stock farming. Its main features are fences, water troughs, wind pumps and occasional farm complexes.

Conclusions:

The main concerns related to the Soyuz 4 SPV park are impacts to palaeontological and archaeological resources and impacts to the cultural landscape.

Aside from the small lithic scatter at JG005 and the rock gong at G007 the development footprint appears to contain no significant archaeology. There does remain a small chance that significant buried archaeological sites and/or material could occur on the site, particularly towards the southern edge of the development area.

Although no graves have been identified within the project footprint, it is possible that unmarked burials could be present, particularly in the vicinity of the Windpoort farm complex.

The location of the Soyuz 4 SPV project in areas of high and moderate palaeontological sensitivity is not a red flag or fatal flaw and should not constrain the proposed development,

provided suitable measures to mitigate any impacts are implemented as part of the development of the SPV. Mitigation measures will be detailed in the HIA and may include site visits by a palaeontologist, the monitoring of earthworks by the ECO and the implementation of a protocol or mechanism for reporting and dealing with chance finds of fossil material during project activities.

With the exception of JG007 and G005, no other significant archaeological sites or materials have been identified in the Soyuz 4 project area. The bulk of the archaeological sites and materials identified were outside of the SPV in locations where such material is usually expected. Provided JG007 and G005 are avoided by the proposed Soyuz 4 SPV park, other archaeological material encountered during the development of the project is unlikely to represent a major constraint. Most archaeological sites are limited in extent and have much smaller constraints footprints on development than those applicable to biodiversity or ecology, for example. It is generally possible to mitigate or avoid impacts on these resources arising from SPV developments should they be found to be present within the development footprint. Experience from many previous WEF and SPV developments has shown that the presence of archaeological resources within a development area is seldom a fatal flaw, and it is thus very unlikely to be the case for the Soyuz 4 SPV project provided suitable mitigation measures are implemented.

Historical buildings in the Windpoort farm complex immediately south of the Soyuz 4 project area will not be directly affected by the proposed SPV facility but there are likely to be indirect, visual impacts arising from its construction. In the absence of any formal guidelines in the Northern Cape for the minimum distance between renewable energy infrastructure and buildings or structures older than 60 years (particularly if these are occupied and in use), guidance produced by the Western Cape Provincial Government in 2006 related to wind energy infrastructure is often used as a proxy (Provincial Government of the Western Cape, 2006). This recommends that infrastructure is placed at least 500 m from occupied farm buildings (Figure 10). This buffer may be reduced if the building is unoccupied. The presence of historical building in the vicinity of the Soyuz 4 project areas is unlikely to be a fatal flaw.

Finally, and with respect to a study plan for the EIA, It is to be expected that SAHRA will request a Heritage Impact Assessment for the Soyuz 4 SPV park as part of the EIA. Given the moderate palaeontological sensitivity of the development site, the HIA will need to include a desk-based palaeontological impact assessment, and possibly a field inspection due to the presence of high sensitivity sediments on the site. A comment on the HIA will be required from SAHRA on the archaeology and palaeontologic and from the Northern Cape heritage authority (Ngwao-Boswa Ya Kapa Bokoni) on the cultural landscape. Any comments received from either of these bodies must be considered by the competent authority before issuing an Environmental Authorisation.

Table of Contents

EXECUTIVE SUMMARY	2
GLOSSARY.....	6
ABBREVIATIONS.....	7
1 INTRODUCTION.....	8
1.1 Terms of Reference	8
1.2 The Author	8
2 METHODOLOGY.....	9
2.1 Sources of Information.....	9
2.2 Grading and Site Sensitivity	10
2.3 Restrictions and Assumptions.....	10
3 PROJECT DESCRIPTION	11
3.1 Study Area.....	12
4 RECEIVING ENVIRONMENT.....	12
4.1 Heritage Sensitivities of Receiving Environment.....	14
4.1.1 Palaeontology	14
4.1.2 Archaeology	15
4.1.3 Historical Built Environment	23
4.1.4 Graves and Burials	24
4.1.5 Cultural Landscape.....	24
5 POTENTIAL RISKS AND IMPACTS.....	24
5.1 Potential Impacts during the Construction Phase.....	25
5.1.1 Palaeontology	25
5.1.2 Archaeology	25
5.1.3 Graves or Burials.....	26
5.1.4 Cultural Landscape.....	27
6 OPPORTUNITIES AND CONSTRAINTS MAPPING.....	28
7 PLAN OF STUDY FOR THE IMPACT ASSESSMENT PHASE.....	29
8 REFERENCES.....	31
9 APPENDIX A: SPECIALIST DECLARATION	33
APPENDIX B: CURRICULUM VITAE – JOHN GRIBBLE	34
APPENDIX C: IMPACT ASSESSMENT METHODOLOGY.....	43
9.1 Definitions of Terminology	43
9.2 Scoring System for Impact Assessment Ratings	44

Figure 1: Proposed Britstown solar facilities (coloured polygons) with Britstown to the north-west and De Aar to the east.(Source: 1:250 000 chart 3022, National Geo-spatial Information, <http://www.ngi.gov.za>)..... 8

Figure 2: The Soyuz 4 SPV park site (green shaded polygon) within the boundary of Portion 5 of Farm 127 (blue polygon). 11

Figure 3: The Soyuz 4 SVP area (green shading) showing the proximity of the line of large

dolerite hills to the south (pale blue line) and the location of the dolerite outcrops within and just outside the development area (yellow circles)	13
Figure 4: Extract from the 1:250,000 geological chart of the Britstown area showing the location of the Soyuz 1 SPV park (green polygon) on Quaternary sands (yellow) and Tierberg Formation shales and sandstone (Pt - orange). The pink areas to the south of the SPV (Jd) represent the intrusive dolerite hills (Source: Geological Survey 1:250 000 map 3022 Britstown).....	14
Figure 5: Soyuz 4 project footprint superimposed on the SAHRIS palaeo-sensitivity map showing the moderate sensitivity of the site (green shading). The grey areas in the periphery are the non-fossiliferous dolerite outcroppings (Source: https://sahris.sahra.org.za/map/palaeo).....	15
Figure 6: Previous heritage assessments in the vicinity of the Soyuz SPV cluster. The Soyuz project areas are shown on the left of the image. Part of the ZVAP survey area is shown on the right of the image.	17
Figure 7: Extent of the ZVAP survey area (shaded area) in relation to the proposed Soyuz SPV cluster (coloured polygons) (After Sampson, 1985).....	18
Figure 8: Survey track plots (pale blue lines) and heritage sites recorded in the Soyuz 4 project area (Source: Google Earth).	19
Figure 9: Detail of location of heritage sites recorded in the Soyuz 4 project area (green shading) and around three dolerite outcrops south of the site (Source: Google Earth).	19
Figure 10: Location of historical Windpoort farmstead just outside the south-western corner of the Soyuz 4 project footprint. The historical farmhouse and outbuildings are located at JG004. Note the stone kraals north of the homestead and the locations of JG022 and G016, the circular stone structures described above, on the hillside behind the homestead (Source: Google Earth).....	23
Figure 11: Indication of the extent of a 500 m buffer around the Windpoort farm complex. .	29

Plate 1: View north across the Soyuz 4 SPV area from a koppie behind the Windpoort farm complex south-west of the site. Note the flat landscape of the SPV area with a mixed grass and bush vegetation and red alluvial soil in patches. A modern windpump and dam are located within the trees in the middle distance on the left (Photo: J Gribble).....	13
Plate 2: View south-west across the SPV area towards the hills south of the development area. (Photo: J Gribble).....	14
Plate 3: Selection of artefacts at JG005. Adze-like piece (left), Khoi pottery shard (centre) and patinated hornfels sidescraper (right) Photos: J Gribble).....	21
Plate 4: G007, a rock gong on the dolerite boulder located inside the eastern boundary of the Soyuz 4 SVP area. Image at right shows the worn areas where the gong has been struck (Photos: G Euston-Brown).	21
Plate 5: Pre-colonial engravings of ostriches recorded on adjacent dolerite outcrops. JG006 on the left and JG008 on the right (Photos: J Gribble)>.....	22
Plate 6: View of dolerite outcrop with engravings (top left), engraved poem (JG017) (bottom left), colonial period engraving of ostrich (JG017) (centre), scratched image of human face (JG017) (top right) and crude scratched house (JG021) (bottom right) (Photos: J Gribble) .	22
Plate 7: Circular stone structures JG022 (left) and G016 (right). These are likely to be the remains of historical shepherd's huts (Photos: J Gribble & G Euston-Brown).....	23
Plate 8: Windpoort historical farmhouse (left) and historical outbuilding and sheep dip (right) (Photos: J Gribble).	24

GLOSSARY

Archaeology: Remains resulting from human activity which are in a state of disuse and are in or on land and which are older than 100 years, including artefacts, human and hominid remains and artificial features and structures.

Early Stone Age: Period of the Stone Age extending between approximately 2 million and 200 000 years ago.

Fossil: Mineralised bones of animals, shellfish, plants and marine animals. A trace fossil is the track or footprint of a fossil animal that is preserved in stone or consolidated sediment.

Heritage: That which is inherited and forms part of the National Estate, as defined by the National Heritage Resources Act 25 of 1999.

Later Stone Age: The archaeology of the last 20,000 years associated with fully modern people.

Middle Stone Age: The archaeology of the Stone Age between approximately 200,000 and 20,000 years ago, associated with early modern humans.

Palaeontology: Any fossilised remains or fossil trace of animals or plants which lived in the geological past, other than fossil fuels or fossiliferous rock intended for industrial use, and any site which contains such fossilised remains or trace.

Quaternary: The geologic time period that encompasses the most recent 2.6 million years. It comprises the Pleistocene (2.6 Ma – 10,000 years ago) and the Holocene (10,000 years ago to the present) and is characterised by a series of global glacial cycles.

SAHRA: South African Heritage Resources Agency – the compliance authority which protects national heritage.

Structure (historic): Any building, works, device or other facility made by people and which is fixed to land, and includes any fixtures, fittings and equipment associated therewith. Protected structures are those which are over 60 years old.

ABBREVIATIONS

BESS	Battery Energy Storage System
EIA	Environmental Impact Assessment
EMPr	Environmental Management Programme
ESA	Early Stone Age
GPS	Global Positioning System
HIA	Heritage Impact Assessment
kV	Kilovolt
LSA	Later Stone Age
Ma	Million years
MSA	Middle Stone Age
MW	Megawatts
MWh	Megawatt hours
MVA	Megavolt Ampere
NHRA	National Heritage Resources Act (No 25 of 1999)
OHPL	Overhead powerline
REEA	Renewable Energy EIA Application
SAHRA	South African Heritage Resources Agency
SAHRIS	South African Heritage Resources Information System
SPV	Solar Photovoltaic
ZVAP	Zeekoe Valley Archaeological Project

1 INTRODUCTION

ACO Associates cc (ACO) was appointed by the Terramanzi Group (Pty) Ltd, on behalf of Soyuz 4 Solar PV Park (Pty) Ltd, to undertake heritage scoping assessment as part of the Environmental Impact Assessment (EIA) process for the proposed Soyuz 4 Solar Photovoltaic (SPV) Park, to be located south-east of Britstown in the Northern Cape (Figure 1).

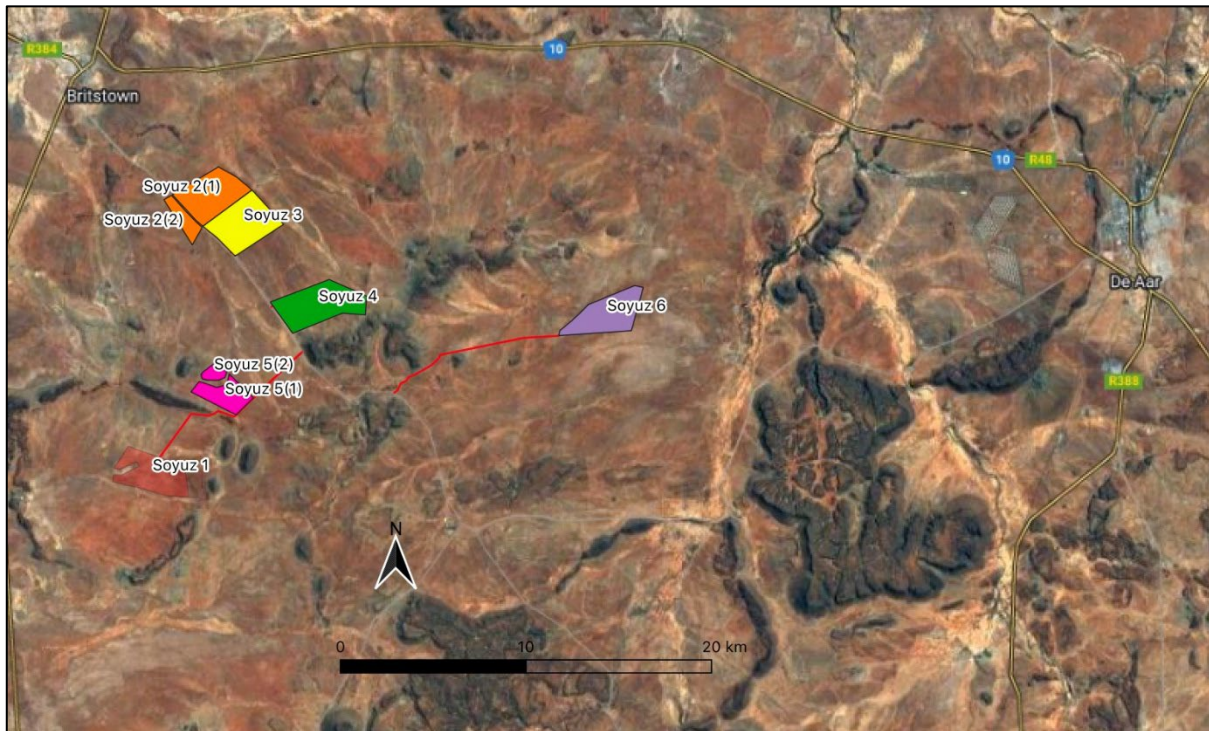


Figure 1: Proposed Britstown solar facilities (coloured polygons) with Britstown to the north-west and De Aar to the east. (Source: 1:250 000 chart 3022, National Geo-spatial Information, <http://www.ngi.gov.za>).

1.1 Terms of Reference

The Soyuz 4 SPV project forms part of the proposed development of 6 solar PV facilities (Soyuz 1-6) with their associated infrastructure and the electricity grid infrastructure (EGI) to support these facilities.

This report provides heritage input for inclusion in the scoping report for the proposed Soyuz 4 SPV project and its associated infrastructure. The findings of this report will contribute to the defining of a developable area for the Soyuz 4 SPV project and will also feed into the heritage impact assessment (HIA) that is likely to be required as part of the EIA that is to be undertaken for the project.

ACO Associates are required to provide:

- Details of the heritage receiving environment of the project;
- Potential impacts to heritage resources identified as part of the scoping assessment;
- Opportunities and constraints mapping and the rationale therefor;
- Potential cumulative impacts for consideration; and
- A plan of study for the impact assessment phase.

1.2 The Author

John Gribble has an MA (UCT, 1989), in archaeology and has been working in cultural resource management since the early 1990s. He has worked in both the regulatory and

commercial heritage management fields: the former during 13 years at the National Monuments Council / South African Heritage Resources Agency (SAHRA), and the latter as both a terrestrial and maritime archaeological consultant in South Africa and the UK.

He holds archaeological accreditation with the Association of Southern African Professional Archaeologists CRM section (Member #43) as follows:

- Principal Investigator: Maritime Archaeology and Colonial Archaeology; and
- Field Director: Stone Age Archaeology.

A signed and certified specialist statement of independence is attached to this scoping report as Appendix A and the author’s CV is attached as Appendix B.

2 METHODOLOGY

This scoping report aims to provide a general description of the known and potential heritage sensitivities of the project site and to flag any heritage-related fatal flaws to the proposed development of the Soyuz 4 SPV park together with draft opportunities and constraints mapping for the proposed project.

The National Heritage Resources Act (No 25 of 1999) (NHRA) defines the range and extent of what are considered to be South Africa’s heritage resources. At its broadest, according to Section 2(xvi) of the Act, a heritage resource is “any place or object of cultural significance”. This means that the object or place has aesthetic, architectural, historical, scientific, social, spiritual, linguistic or technological value or significance.

In terms of the definitions provided in Section 2 of the NHRA, heritage resources potentially present on the Soyuz 4 SPV site which may be impacted by the proposed development include:

- Palaeontological resources;
- Pre-colonial archaeological sites and materials;
- Colonial era archaeological sites and materials;
- Rock paintings and / or rock engravings;
- Historical built structures; and
- Graves and burials.

2.1 Sources of Information

This scoping report relies on a range of primary and secondary information to provide a high-level assessment of the potential palaeontological, archaeological and historical built environment sensitivity of the development site.

The sources of information used are shown in Table 1 below and include published archaeological papers and reports for the general project area and unpublished archaeological and heritage impact assessments that have been undertaken in the vicinity of the project site.

Table 1: Information sources used in this assessment

Data/Information	Source	Date	Type	Description
Maps	Chief Directorate: National Geo-Spatial Information	Various	Spatial	Historical and current 1:50 000 topographic maps of the study area and immediate surrounds
Geological chart	Council for Geoscience	Various	Spatial	Current 1:250 000 geological survey chart for the area

Aerial photographs	Chief Directorate: National Geo-Spatial Information	Various	Spatial	Historical aerial photography of the study area and immediate surrounds
Aerial photographs	Google Earth	Various	Spatial	Recent and historical aerial photography of the study area and immediate surrounds
Cadastral data	Northern Cape Farm Portions	Current	Spatial	Cadastral boundaries, extents and aerial photography
Cadastral data	Chief Directorate: National Geo-Spatial Information	Various	Survey diagrams	Historical and current survey diagrams, property survey and registration dates
Background data	South African Heritage Resources Information System (SAHRIS)	Various	Reports	Previous impact assessments for any developments in the vicinity of the study area
Palaeontological sensitivity	South African Heritage Resources Information System (SAHRIS)	Current	Spatial	Map showing palaeontological sensitivity and required actions based on the sensitivity.
Background data	Books, journals, websites	Various	Books, journals, websites	Historical and current literature describing the study area and any relevant aspects of cultural heritage.

In addition, a site inspection of the Soyuz PV Cluster project areas as a whole was conducted by ACO Associates for five days between 7 and 11 January 2023. The survey was conducted by two experienced field archaeologist and heritage resources identified were recorded on Garmin GPS units (GPSMap 62s) carried by the field team, by site descriptions recorded while in the field and photographically when pertinent.

Together, these information sources have allowed a description of the heritage potential of the project site, the identification of potential heritage impacts and in some cases, the identification of sensitive areas that should be avoided, if possible, in the planning of the project.

2.2 Grading and Site Sensitivity

Section 7(2) of the NHRA requires that provincial authorities formulate a system for the grading of heritage resources. While this is yet to happen in most provinces, the national heritage body, the South African Heritage Resources Agency (SAHRA) has formulated a grading system for archaeology and palaeontologic which is applied in those in provinces where it is currently the statutory commenting authority on behalf of the province.

Sites of local heritage significance form the Grade 3 tier of the system, with those of high local significance designated as Grade 3A. Those of medium or low local significance are designated Grades 3B and 3C respectively. It is generally assumed that Grade 3A heritage resources should be preserved in their entirety, while Grade 3B and 3C sites can be mitigated or part preserved, as appropriate.

Resources which do not meet the Grade 3 criteria are referred to as Not Conservation-Worthy, although this author prefers the term "Ungradable" and this is used in this report. Generally, these resources require no further action or mitigation in respect of development proposed on a site.

2.3 Restrictions and Assumptions

The January 2023 field survey was carried out at the surface only and any completely buried archaeological sites or material will not have been recorded.

Recent good rain in the area meant that the project site was densely vegetated. This limited artefact visibility but based on what archaeological material was noted during the survey, it is

unlikely that significant archaeological occurrences were present. Landscape features such as rocky hills and outcrops, which are known to be the focus of most heritage resources in this area, could be easily identified and visited.

No palaeontological fieldwork has yet been conducted on the project site.

The assessment of cumulative impacts is based on the list of approved Wind and Solar PV projects in the Renewable Energy EIA Application (REEA) Database (2022_Q2) within 30 km of the Soyuz SPV cluster.

3 PROJECT DESCRIPTION

The applicant proposes the development of six new solar photovoltaic (SPV) facilities to be known as Soyuz SPV Parks 1-6 with a combined capacity of 1470 megawatts (MW). The purpose of these facilities is to generate clean electricity from a renewable energy source (i.e., solar radiation) to contribute to the national energy grid and/or to serve any private off takers.

The Soyuz 4 SPV Park and associated infrastructure will be located on Portion 5 of Farm 127 approximately 13 km south of Britstown in the Emthanjeni Local Municipality, Northern Cape. The land is currently zoned agricultural and is mainly used for stock farming (see Figure 1 and Figure 2).

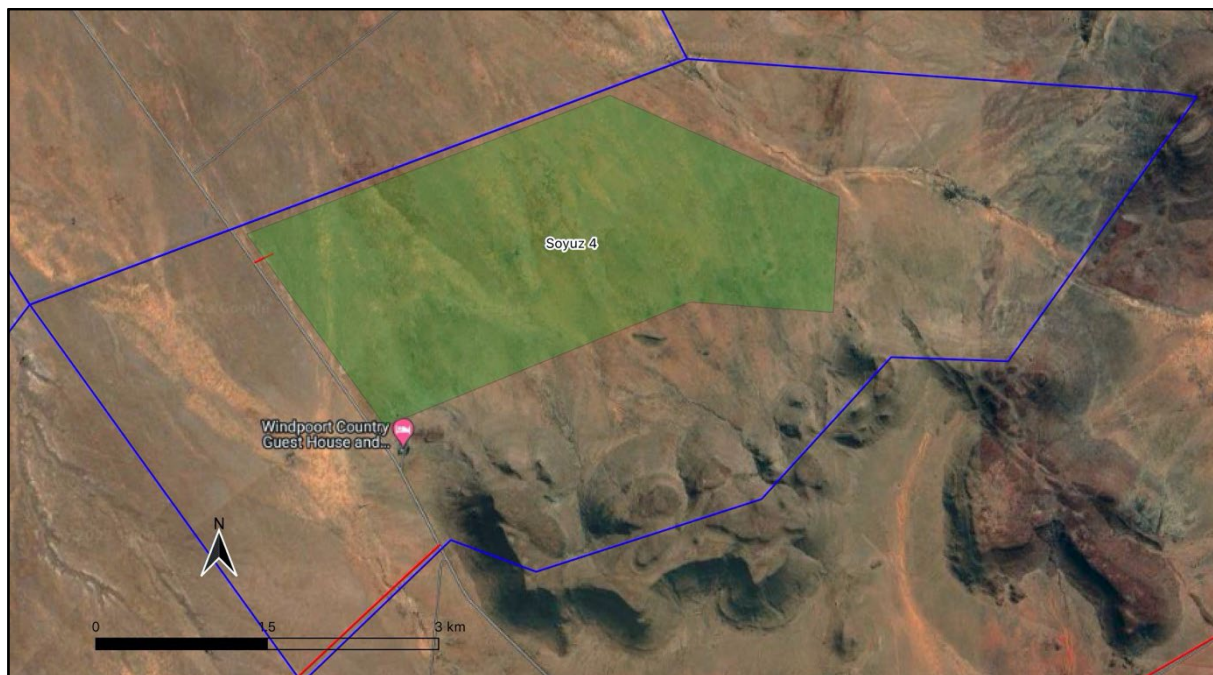


Figure 2: The Soyuz 4 SPV park site (green shaded polygon) within the boundary of Portion 5 of Farm 127 (blue polygon).

The project will have a generating capacity of up to 300 MW and a Battery Energy Storage System (BESS) capacity of 1200 megawatt hours (MWh).

Bi-facial, single axis trackers will be utilised for the SPV panels and an on-site substation with a capacity of 240 Megavolt Ampere (MVA), will enable the connection of a 132 kV overhead powerline (OHPL).

The project specifications are shown in Table 2 below:

Table 2: Soyuz41 SPV Park project specifications

SOYUZ 4 SOLAR PV PARK	
Contracted Capacity of Facility	300 MW
Infrastructure Proposed	<ul style="list-style-type: none"> • Bifacial SPV modules, single axis tracker mounting structures at a height of up to 6m above ground level • Inverters and transformers • Underground and overhead cabling up to 33kV between project components • 1,500 m² O&M building • 3,000 m² paved areas • 60,000 m² Battery Energy Storage System (1000 MWh) • 15,000 m² back to back substation (including facility substation, and Eskom collector/switching station with feeder bays) (240MW) • Access and internal roads • Fencing around development area • 10,000 m² temporary construction camp • 40,000 m² temporary laydown areas
Lifespan of the project	30 years

3.1 Study Area

The study area for all the proposed Soyuz SPV facilities comprises the seven farm portions shown in Table 3 below. Although, according to the current proposed project footprint two of the properties (Farm 1/126 and Farm 1/97) will not be directly affected by the projects, they have nevertheless been included in this scoping assessment.

Table 3: Farm portions in the study area

Farm Number	Portion	Landowner	SPV Project
Farm 97	Portion 1	Wifontein Trust	None
Farm 97	Portion 2	Wifontein Trust	Soyuz 2 & 3
Farm 126	Portion 1	Wifontein Trust	None
Farm 91	Portion 1	JC Paul Familie Trust	Soyuz 6
Farm 127	Portion 5	JC Paul Familie Trust	Soyuz 4
Farm 127	Portion 1	Andrie Grove	Soyuz 5
Farm 145	Portion 3	Andrie Grove	Soyuz 1

The assessment of the full extents of the affected farms, rather than just the proposed project footprints, allows the identification and assessment of less immediate heritage sensitivities such as potential visual impacts on the cultural landscape.

The total study area for all the Soyuz SPV facilities is approximately 13,050 hectares (ha).

4 RECEIVING ENVIRONMENT

The property on which the Soyuz 4 SPV facility is being proposed is rural farmland and is zoned agricultural. Historically the land has been and continues to be used for stock farming.

The Soyuz 4 SPV project site is situated on a largely flat plain. Approximately 1 km south of the SPV area there is a substantial line of dolerite hills, and a number of smaller dolerite koppies of dolerite occur both within and just outside the southern edge of the site (Figure 3;

Plate 1 and Plate 2).

The proposed Soyuz 4 SPV development site is almost entirely covered in the red alluvial sands typical of this part of the Northern Cape. Although the depth of the sand varies, animal burrows noted during the survey indicate that it can be more than a metre thick in places. A seasonal river course lies immediately to the east of the project area, but is excluded from the development site footprint.

The vegetation is the grassy, dwarf shrubland typical of the Nama-Karoo biome (Plate 1 and Plate 2). The only trees in the landscape are those planted in historical times at small dams installed to water livestock.

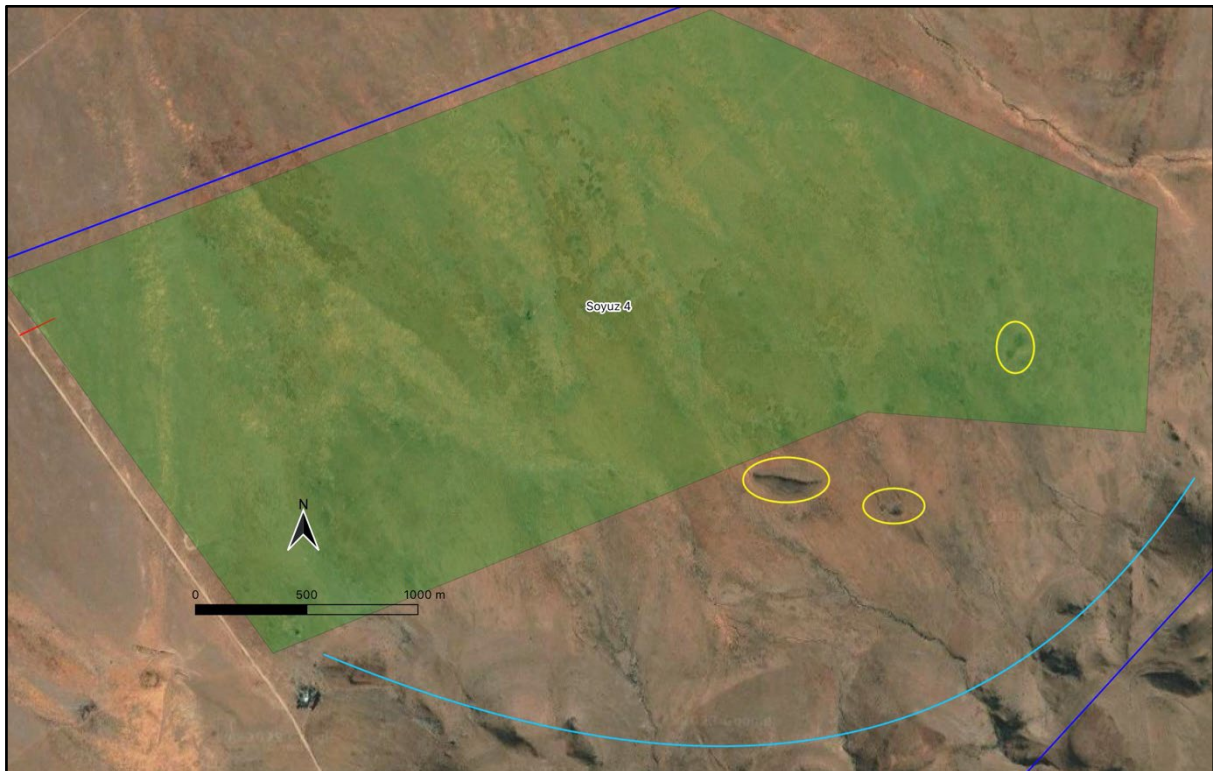


Figure 3: The Soyuz 4 SVP area (green shading) showing the proximity of the line of large dolerite hills to the south (pale blue line) and the location of the dolerite outcrops within and just outside the development area (yellow circles)



Plate 1: View north across the Soyuz 4 SPV area from a koppie behind the Windpoort farm complex south-west of the site. Note the flat landscape of the SPV area with a mixed grass and bush vegetation and red alluvial soil in patches. A modern windpump and dam are located within the trees in the middle distance on the left (Photo: J Gribble).



Plate 2: View south-west across the SPV area towards the hills south of the development area. (Photo: J Gribble).

4.1 Heritage Sensitivities of Receiving Environment

This section describes the heritage sensitivities of the proposed Soyuz 4 development site as they are currently understood.

4.1.1 Palaeontology

According to a comment for this scoping study received from palaeontologist Dr Marion Bamford of the University of the Witwatersrand and the geological mapping, the Soyuz 4 SPV park lies partly on sedimentary shales and sandstones of the Tierberg Formation of the lower Karoo Supergroup and partly on much younger Tertiary limestones and Quaternary sands, both of which can preserve fossils (Figure 4 and Table 4).

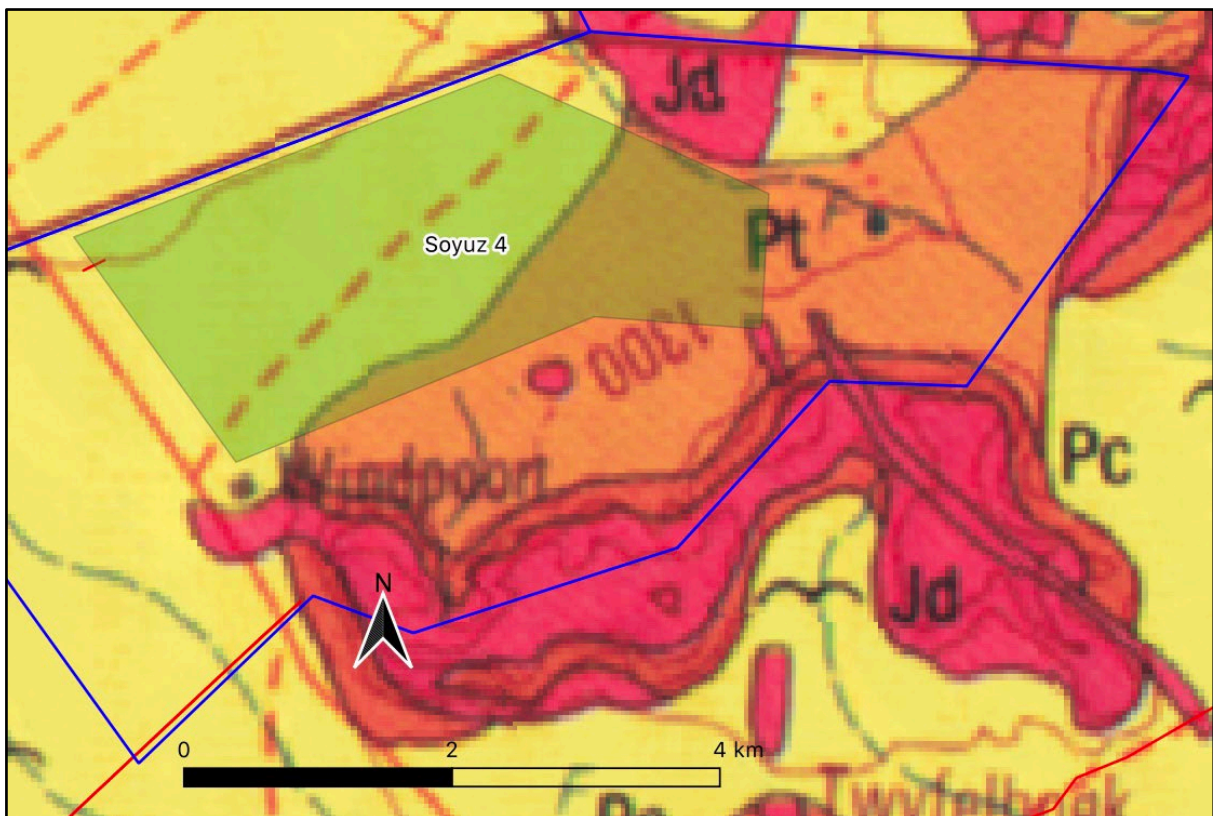


Figure 4: Extract from the 1:250,000 geological chart of the Britstown area showing the location of the Soyuz 1 SPV park (green polygon) on Quaternary sands (yellow) and Tierberg Formation shales and sandstone (Pt - orange). The pink areas to the south of the SPV (Jd) represent the intrusive dolerite hills (Source: Geological Survey 1:250 000 map 3022 Britstown).

Table 4: Explanation of symbols for the geological map and approximate ages (SG = Supergroup; Fm = Formation; Ma = million years)

Symbol	Colour	Group/Formation	Lithology	Approximate Age
	Pale yellow	Quaternary	Alluvium	Quaternary, ca 1.0 Ma to Present
Jd	Red	Jurassic dykes	Dolerite dykes, intrusive	Jurassic, approx. 180 Ma
Pc	Orange	Carnarvon Formation, Eccca Group	Mudstone, siltstone, sandstone	Late Permian
Pt	Pale orange	Tierberg Fm, Eccca Group, Karoo SG	Weathering shale with subordinate siltstone and sandstone	Mid-Permian, ca. 299 – 252 Ma

The Tierberg Formation sediments date from the mid-Permian, between circa 252 and 299 million years, and are known to contain invertebrate fossils such as fish scales, sponge spiracles and other trace fossils.

The Quaternary sand, alluvium and calcrete, are much younger, dating to within the last million years. These sediments may contain transported fossils that originated in the source area of the sediments or have been trapped in palaeo-channels along the modern river valleys. This fossil material will be fragmentary and out of its original context but may, nevertheless preserve important palaeontological information.

SAHRA's palaeo-sensitivity map (see <https://sahris.sahra.org.za/map/palaeo>) (Figure 5), indicates that the portion of the Soyuz 4 development footprint underlain by Quaternary sediments is of moderate palaeontological sensitivity, but that the Tierberg formation sediments in the south and east of the site are of high sensitivity.

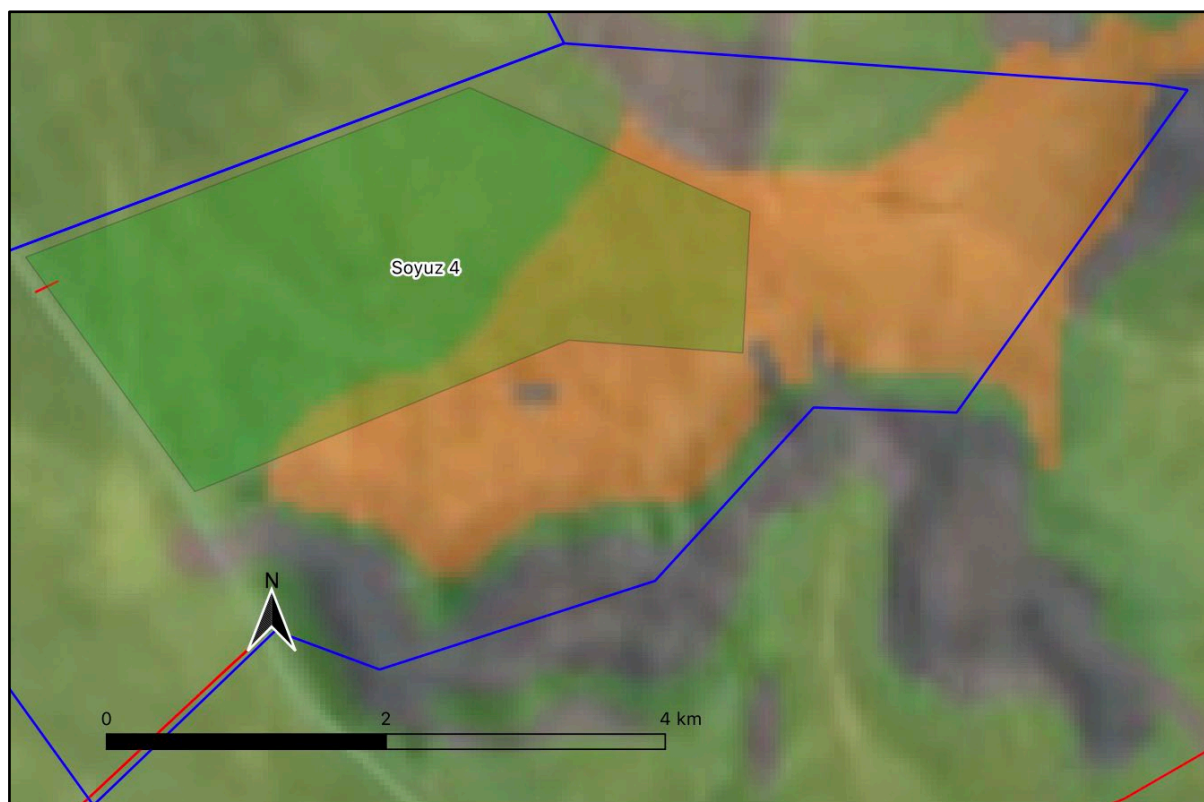


Figure 5: Soyuz 4 project footprint superimposed on the SAHRIS palaeo-sensitivity map showing the moderate sensitivity of the site (green shading). The grey areas in the periphery are the non-fossiliferous dolerite outcroppings (Source: <https://sahris.sahra.org.za/map/palaeo>).

4.1.2 Archaeology

A substantial number of archaeological impact assessments have been conducted in this part of the Karoo in recent years to support wind and SPV projects around De Aar to the east of the Britstown Cluster (Figure 6) (see, for example, Kaplan, 2010a, 2010b; Bekker, 2012a, 2012b; Fourie, 2012; Kruger, 2012; Huffman, 2013; Orton & Webley, 2013a, 2013b; Fourie, 2014; Gribble and Euston-Brown, 2020, 2021; Webley and Orton, 2011).

East and south of the Soyuz SPV cluster these recent studies are supplemented by the results of what is still South Africa's largest, most intensive archaeological survey: the Zeekoe Valley Archaeological Project (ZVAP) (Figure 7). Between 1979 and 1981, 4,954 km² of the Seekoei River drainage, between the Sneeuberg in the south and Hanover in the north, was intensively surveyed by a team of archaeologists and the locations of more than 14,000 archaeological stone tool occurrences were recorded (Sampson, 1985). The ZVAP survey, provides a very detailed picture of the spatial distribution of not only pre-colonial archaeological sites spanning the period from the late Early Stone c. 250,000 years ago to within the last 200 years, but also maps landscape features that formed foci for our ancestors' use of the landscape.

The ZVAP results and those from the more recent surveys have allowed the development of a good general understanding of the pre-colonial, Stone Age archaeology in the Karoo and of the likely locations and distribution of sites of different periods within the Karoo landscape. They can be used as an indicator of the likely archaeological sensitivities of Karoo landscapes, including the Soyuz 4 SPV project area.

Due to the geology of the Karoo, caves and rock shelters are very rare and this means that most Karoo archaeological sites are open sites containing principally stone artefacts. Ostrich eggshell is sometime preserved and, occasionally, pottery on recent sites, but bone is rarely preserved except in rare, stratified contexts. Sites span the full range from the Early and Middle Stone Ages to the contact period between the Later Stone Age inhabitants of the region and the incoming European colonists within the last two centuries.

Potentially archaeologically sensitive areas in the Karoo landscape include:

- Springs, pans and watercourses which were a focus for human activity in the past, and prehistoric and colonial-era archaeological sites may be found around them.
- Outcrops of hornfels which were quarried for stone tool raw material during the Early, Middle and Later Stone Ages.
- Any accessible rock shelter or overhang on the skirts or slopes of hills and mountains. These have the potential to contain rock paintings and/or archaeological deposit.
- Dolerite outcrops and boulders which may contain pre-colonial (and in some instances historical) rock engravings.

Aside from occasional isolated MSA lithics noted widely spread across the Soyuz 4 project footprint, the survey found only two archaeological occurrences within the project area (Figure 8 - Figure 9 and Table 5). Three dolerite outcrops south of the SPV area were visited to check for archaeology and a number of sites were located on each. These are listed in Table 5, and some are also described in the text below.

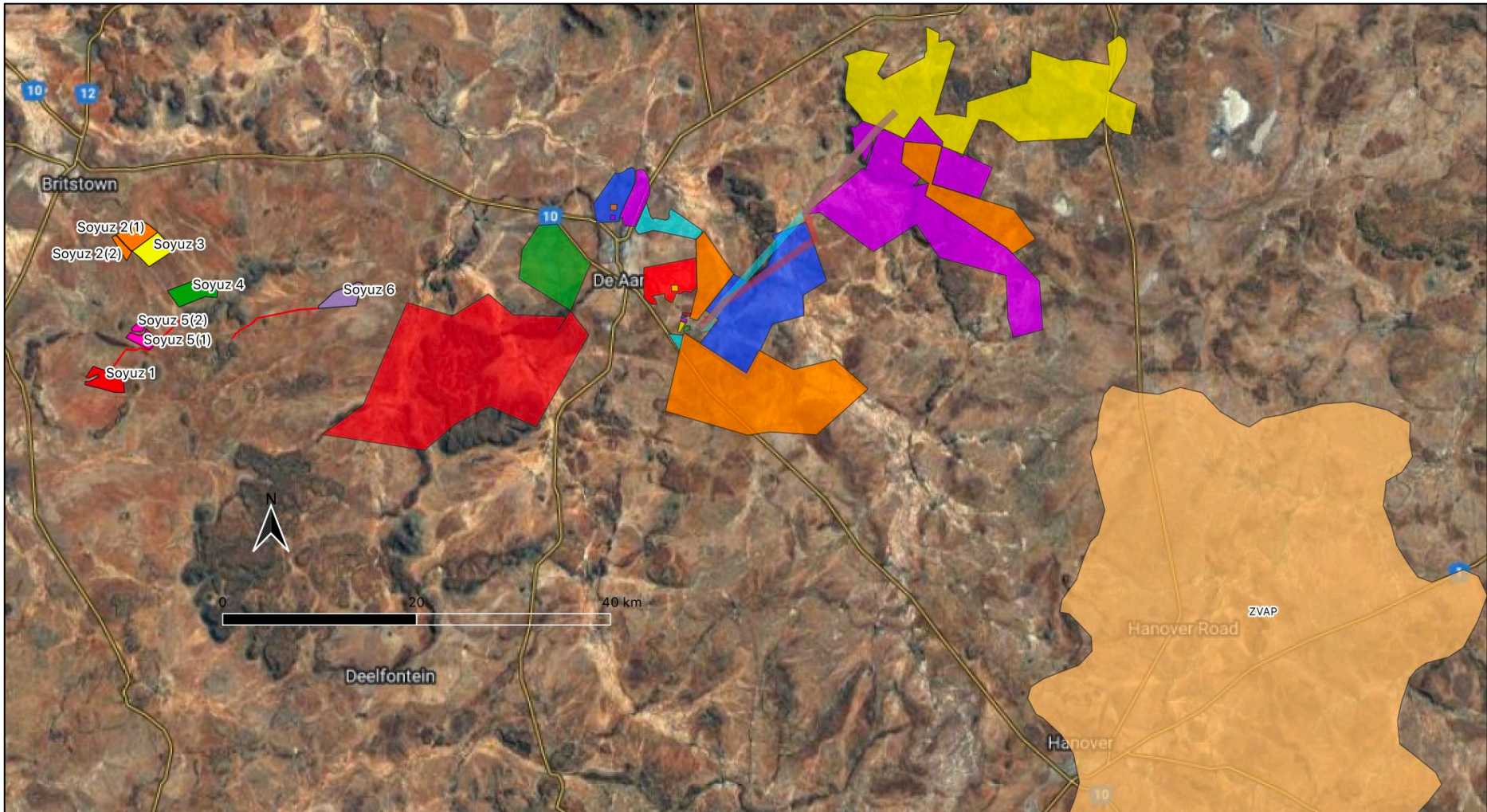


Figure 6: Previous heritage assessments in the vicinity of the Soyuz SPV cluster. The Soyuz project areas are shown on the left of the image. Part of the ZVAP survey area is shown on the right of the image.

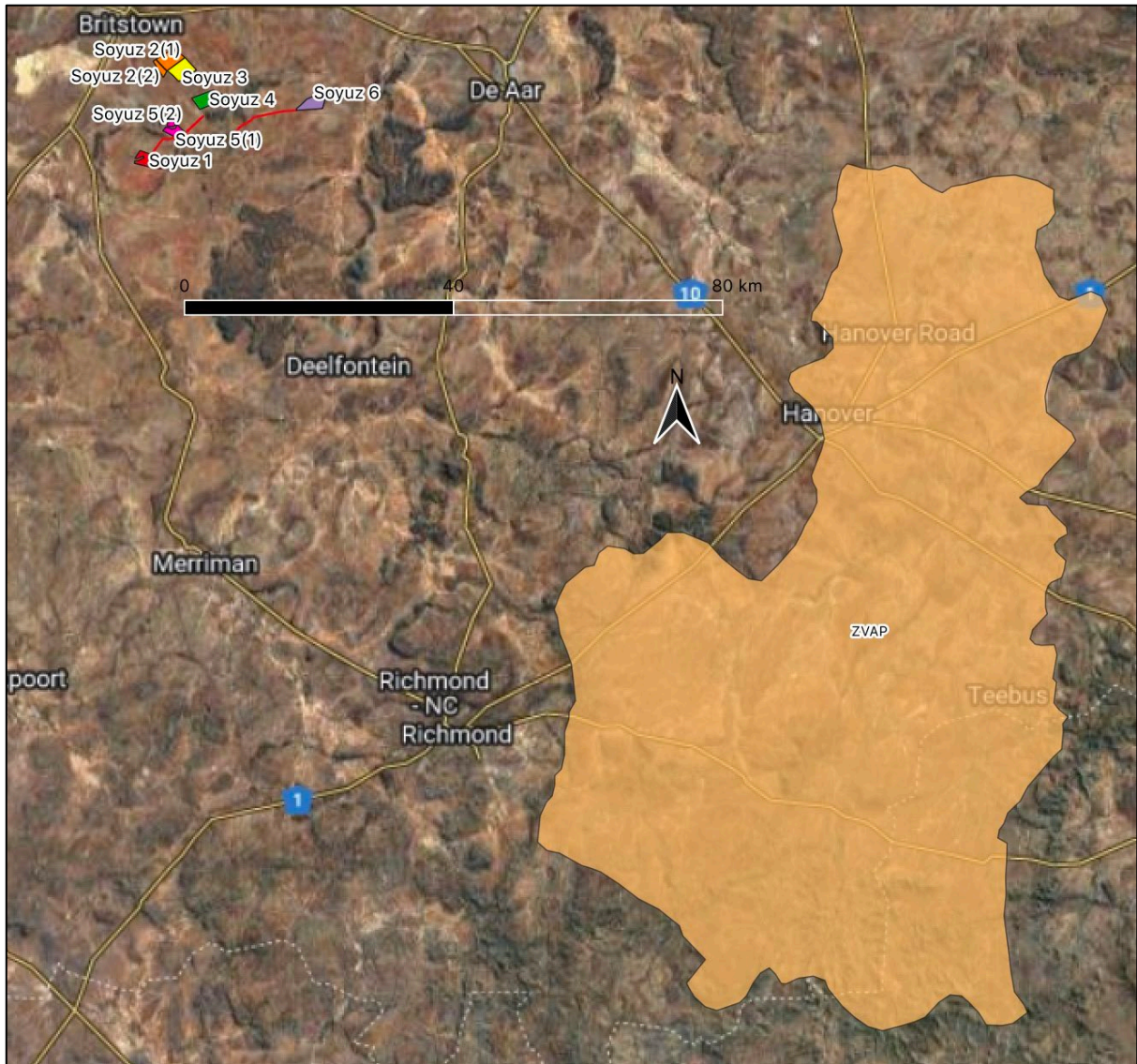


Figure 7: Extent of the ZVAP survey area (shaded area) in relation to the proposed Soyuz SPV cluster (coloured polygons) (After Sampson, 1985).

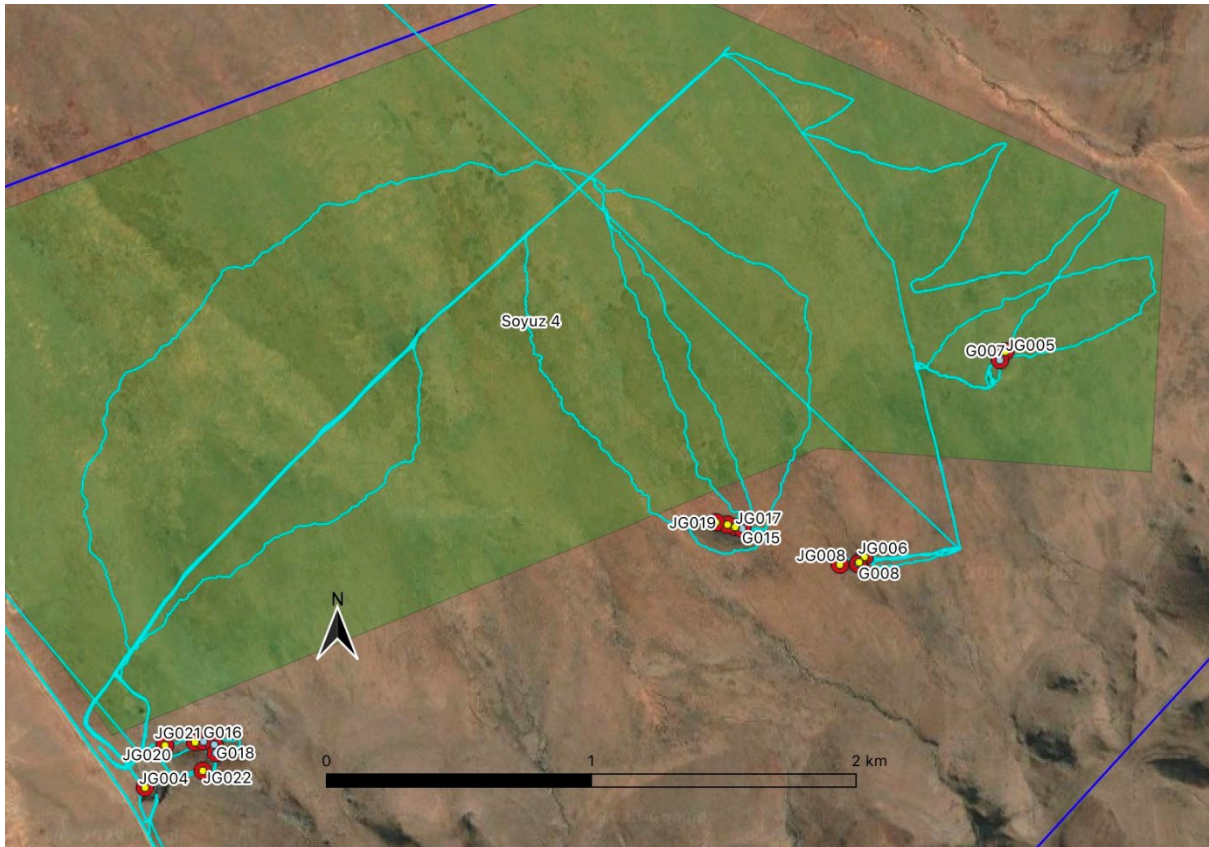


Figure 8: Survey track plots (pale blue lines) and heritage sites recorded in the Soyuz 4 project area (Source: Google Earth).

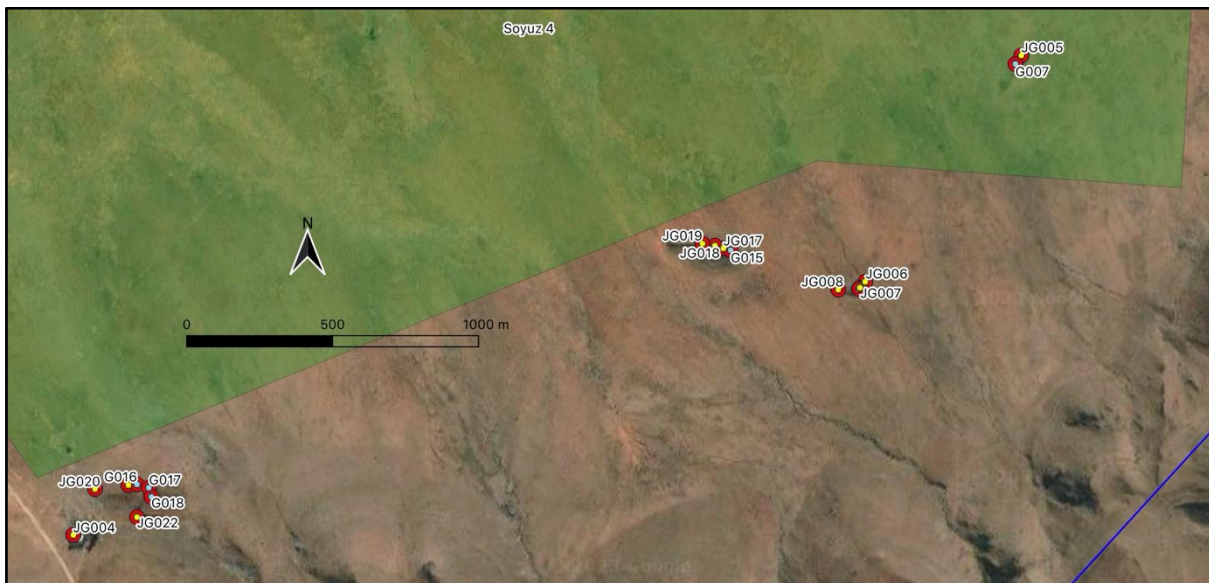


Figure 9: Detail of location of heritage sites recorded in the Soyuz 4 project area (green shading) and around three dolerite outcrops south of the site (Source: Google Earth).

Table 5: List of heritage resources recorded during the ACO survey of Soyuz 4 SPV project area

Site	Location	Description	Grading
JG004	-30.699988967 23.606298985	Windpoort farmstead. Late Victorian / early 20th century farmhouse, somewhat altered. Adjacent more recent cottage. Older farm shed associated with some stone built kraals remains and more modern sheep pen. Sheep dip. Outside the development area.	3C

JG005	-30.687278984 23.635485023	Ephemeral scatter of LSA hornfels lithics. At base of northern slope of dolerite outcrop. Very thin. Couple of pieces of stone / m ² . Some "fresh" hornfels including backed "adze". Occasional pieces of grey patinated hornfels - including a bladelet (4 x 1 cm). Large "sidescraper". 1 x thick piece of Khoi grass-tempered pottery. Approx. 5 x 15 m in extent.	3C
JG006	-30.693271039 23.630690994	Scratched ostriches on 2 x adjacent dolerite boulders. 3 panels. Approx 10 images (4+, 2, 4+).	3A
JG007	-30.693426020 23.630528972	Small rubbed patch on dolerite boulder near top of outcrop. Approx. 5m from G008	3B
JG008	-30.693483017 23.629859006	Vertical panel of approx 6 ostriches on dolerite boulder. Faces east. Engraved using same rough scratching as JG006.	3A
JG017	-30.692396974 23.626313042	Historical graffiti on a series of patinated dolerite boulders near the top of a koppie. There appears to be a small approx. 3 x 3m area below the summit which has been cleared of rock and may have been a place to site. Up to 8 rocks found with signatures and dates, scratched images (ostriches and a house), and a poem. Within an area of roughly 15 m of waypoint. A number of different Van Wyks dated between 1900 and 1959, Francis Drake 1924.	3C
JG018	-30.692313993 23.626059992	Question mark shaped scratched area on boulder. Approx. 30 x 30 cm. On the rock above it the name "Williams". These two occurrences do not seem contemporaneous based on style.	3C
JG019	-30.692264037 23.625675011	More scratched names including Van Wyk 1900 and a human face	3C
JG020	-30.698771998 23.606979009	Labourers' cottage associated with the Windpoort werf. Soft-fired red bricks. Single room. Being used as a storeroom	3C
JG021	-30.698667979 23.607997997	Historical graffiti. House with some other arrow-like markings above.	3C
JG022	-30.699506002 23.608259009	Remains of a circular stone structure on the southern slope of the hill. Dolerite cobbles. Front/lower section of wall missing. Approx 2 m internally. Bottle glass and undiagnostic white ceramics scattered within and around structure.	3C
G007	-30.687509 23.635305	Possible rock gong on western side of small dolerite outcrop. Only high ground in wide area. Gong is a dolerite boulder approx 1 x 0,7 m lying on top of a number of other boulders. Three definite pecked / worn areas and some other possible areas. Outside the development area.	3A
G008	-30.693475 23.630496	Scratched image of a single ostrich on a boulder on top of a dolerite outcrop Upslope of JG006 and approx 5m from JG007. Very long neck. Modern graffiti on adjacent boulder. Date of either 1924 or 1984. Outside the development area	3A
G015	-30.692438 23.626541	On the slope of a hill, approx 8 m from JG017, are two dolerite rocks with engravings. The one has a very naively scratched bird? The other one has about four scratched ostriches. The engravings are all very ephemeral and hard to see.	3C
G016	-30.698647 23.608272	A possible stone structure on the side of a hill, which is made of large dolerite boulders. It is possibly circular and is approx 5 m ² . Next to it is a dolerite boulder which has two areas of line scratchings, probably pre-colonial. On two smaller boulders below it are some more scratchings.	3C
G017	-30.698730 23.608633	A dolerite boulder on the same hill, but on the other side of the hill's shoulder which has rubbings/scratchings, and the initial T.V. The stone above it has at least three more rubbings/scratching and a possible animal (though probably not). Pre-colonial.	3C
G018	-30.698981 23.608703	A small LSA site on the lee side of the same hill, below a few dolerite boulders. The lithics are either fairly patinated or quite fresh. Some were slightly buried. They are hornfels, with one chert (?) piece. Lots of little bladelets, flakes and chips. One fairly big MSA flake with retouch. Possibly two occupations. The site is fairly dense, approx 10 lithics / m ² . The area is approx 6 m ² .	3C

The sites within the SPV area are JG005 and G007. JG005 is an ephemeral scatter of LSA hornfels lithics, approximately 5 x 15 m in extent located at base of the small dolerite outcrop inside the eastern edge of the SPV area. The lithics include a backed adze-like piece and some possibly older LSA lithics with a light grey patina were noted, which include a large

sidescraper. A single piece of thick Khoi grass-tempered pottery dating to within the last 2000 years was recorded (Plate 3).



Plate 3: Selection of artefacts at JG005. Adze-like piece (left), Khoi pottery shard (centre) and patinated hornfels sidescraper (right) Photos: J Gribble.

G007, located on the opposite side of the dolerite outcrop to JG005, is a rock gong. This dolerite boulder has a number of worn patches, which if struck, produce a ringing sound (Plate 4). Rock gongs are fairly common in the Karoo with other examples known to the author outside Loxton, outside Hanover and at Nelspoort.



Plate 4: G007, a rock gong on the dolerite boulder located inside the eastern boundary of the Soyuz 4 SVP area. Image at right shows the worn areas where the gong has been struck (Photos: G Euston-Brown).

The dominant site type found in the dolerite koppies south of the SPV boundary was rock engravings. Pre-colonial engravings of ostriches were recorded at JG006, JG008 and G008, while the engravings at JG017-JG019, JG021, G008, G015 and G017 are colonial in date and consist of names, dates, and some scratched images (Plate 6).



Plate 5: Pre-colonial engravings of ostriches recorded on adjacent dolerite outcrops. JG006 on the left and JG008 on the right (Photos: J Gribble)>



Plate 6: View of dolerite outcrop with engravings (top left), engraved poem (JG017) (bottom left), colonial period engraving of ostrich (JG017) (centre), scratched image of human face (JG017) (top right) and crude scratched house (JG021) (bottom right) (Photos: J Gribble)

Two circular stone structures (JG022 and G016) were recorded on the dolerite koppie adjacent to and behind the Windpoort farm complex. These structures may be the remains of historical shepherds' huts that are common across the Karoo (Plate 7).



Plate 7: Circular stone structures JG022 (left) and G016 (right). These are likely to be the remains of historical shepherd's huts (Photos: J Gribble & G Euston-Brown).

4.1.3 Historical Built Environment

A comparison of the earliest 1:250,000 topographic map sheet for the area, which dates from 1966, with modern satellite imagery in a GIS indicates that there are no historical built structures within the Soyuz 4 project footprint but that the historical Windpoort farmstead is just more than 200 m from the south-western corner of the SVP area (Figure 9 and Plate 8).

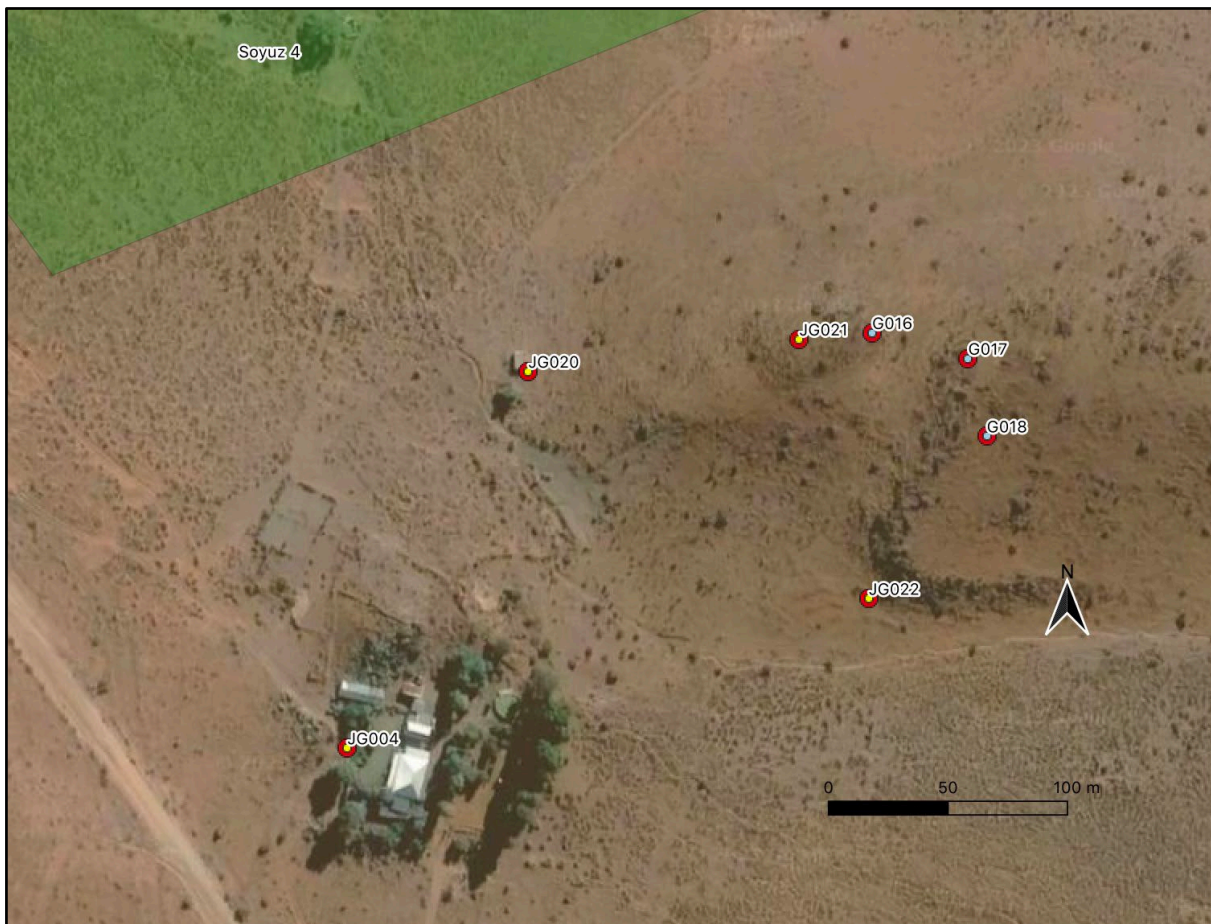


Figure 10: Location of historical Windpoort farmstead just outside the south-western corner of the Soyuz 4 project footprint. The historical farmhouse and outbuildings are located at JG004. Note the stone kraals north of the homestead and the locations of JG022 and G016, the circular stone structures described above, on the hillside behind the homestead (Source: Google Earth).



Plate 8: Windpoort historical farmhouse (left) and historical outbuilding and sheep dip (right) (Photos: J Gribble).

4.1.4 Graves and Burials

No graves or burial grounds were recorded within the Soyuz 4 project footprint.

4.1.5 Cultural Landscape

The cultural landscape within which the Soyuz 4 SPV park will be located is not well developed but reflects the recent historical use of the land for stock farming. Its main features are fences, water troughs, wind pumps and occasional farm complexes.

5 POTENTIAL RISKS AND IMPACTS

The main concerns related to the Soyuz 4 SPV park are impacts to palaeontological and archaeological resources and impacts to the cultural landscape.

Aside from the small lithic scatter at JG005 and the rock gong at G007 the development footprint appears to contain no significant archaeology. There does remain a small chance that significant buried archaeological sites and/or material could occur on the site, particularly towards the southern edge of the development area.

Although no graves have been identified within the project footprint, it is possible that unmarked burials could be present, particularly in the vicinity of the Windpoort farm complex.

Direct impacts to the historical built environment are unlikely so it has been scoped out of this assessment, but indirect, visual impacts on the Windpoort farm complex are considered later.

The following risks and direct impacts have been identified for the Soyuz 4 SPV project:

- **Construction Phase**
 - Potential impacts on palaeontology
 - Potential impacts on archaeology
 - Potential impacts on graves and burials
 - Potential impacts on the cultural landscape.
- **Operational Phase**
 - Potential impacts on the cultural landscape.
- **Decommissioning Phase**
 - Potential impacts on the cultural landscape.
- **Cumulative Impacts**
 - Potential impacts on palaeontology
 - Potential impacts on archaeology
 - Potential impacts on graves and burials

- Potential impacts on the cultural landscape.

5.1 Potential Impacts during the Construction Phase

The impact assessment below uses the methodology supplied by Terramanzi, which is attached in Appendix C below.

5.1.1 Palaeontology

Activities associated with the construction and decommissioning of the Soyuz 4 project may disturb or destroy fossil material within the Tierberg formation sediments and the more recent Quaternary sediment that together cover the site.

However, the potential for fossils in these sediments is very variable and significance of impacts palaeontological resources would thus be **low negative**, but **very low negative** with the implementation of mitigation measures

Table 6: Impacts on Palaeontology

IMPACT NATURE	Palaeontological Impact – Disturbance and/or destruction of palaeontological material during construction and decommissioning		STATUS	NEGATIVE
Impact Description	Disturbance and/or destruction of palaeontological material			
Impact Source(s)	Activities associated with the construction and decommissioning of the SPV facility			
Receptor(s)	Potential palaeontological material			
PARAMETER	WITHOUT MITIGATION	SCORE	WITH MITIGATION	SCORE
EXTENT (A)	Preferred Alternative:	1	Preferred Alternative:	1
	No-Go Alternative:	0	No-Go Alternative:	0
DURATION (B)	Preferred Alternative:	4	Preferred Alternative:	4
	No-Go Alternative:	0	No-Go Alternative:	0
PROBABILITY (C)	Preferred Alternative:	2	Preferred Alternative:	2
	No-Go Alternative:	0	No-Go Alternative:	0
INTENSITY OR MAGNITUDE (D)	Preferred Alternative:	-2	Preferred Alternative:	1
	No-Go Alternative:	0	No-Go Alternative:	0
SIGNIFICANCE RATING (F) = (A*B*D)*C	Preferred Alternative:	-16	Preferred Alternative:	8
	No-Go Alternative:	-0	No-Go Alternative:	+0
CUMULATIVE IMPACTS	Cumulative impacts to palaeontological resources are difficult to assess due to the variable distribution and preservation of fossil material. However, location of this project and others approved or built within a 30km radius on areas either largely underlain by principally dolerite and/or Quaternary sediments suggests that the cumulative impact on palaeontological resources is likely to be low.			
CONFIDENCE	High			
MITIGATION MEASURES	Implementation of a Fossil Chance Find Protocol and monitoring of earthworks by the Environmental Compliance Officer. Report any chance finds of palaeontological material to SAHRA and/or an palaeontologist.			

5.1.2 Archaeology

Archaeological sites and/or materials may be affected during activities associated with the construction and decommissioning of the Soyuz 4 project. Most of the archaeological material identified within the project footprint is of very low cultural significance, but the small lithic scatter at JG005 and the rock gong at G005 has been graded 3C and 3A. The significance of impacts on the known archaeological would thus be **low negative**, but **very low negative** with the implementation of mitigation measures.

Table 7: Impacts on Archaeology

IMPACT NATURE	Archaeological Impact – Disturbance and/or destruction of archaeological sites and/or materials during construction and decommissioning		STATUS	NEGATIVE
Impact Description	Disturbance and/or destruction of archaeological sites and/or materials			
Impact Source(s)	Activities associated with the construction and decommissioning of the SPV facility			
Receptor(s)	Known and potential archaeological sites and/or materials			
PARAMETER	WITHOUT MITIGATION	SCORE	WITH MITIGATION	SCORE
EXTENT (A)	Preferred Alternative:	1	Preferred Alternative:	1
	No-Go Alternative:	0	No-Go Alternative:	0
DURATION (B)	Preferred Alternative:	4	Preferred Alternative:	4
	No-Go Alternative:	0	No-Go Alternative:	0
PROBABILITY (C)	Preferred Alternative:	3	Preferred Alternative:	2
	No-Go Alternative:	0	No-Go Alternative:	0
INTENSITY OR MAGNITUDE (D)	Preferred Alternative:	-2	Preferred Alternative:	1
	No-Go Alternative:	0	No-Go Alternative:	0
SIGNIFICANCE RATING (F) = (A*B*D)*C	Preferred Alternative:	-24	Preferred Alternative:	8
	No-Go Alternative:	-0	No-Go Alternative:	+0
CUMULATIVE IMPACTS	Cumulative impacts to archaeological resources are difficult to assess due to the variable distribution and quality of archaeological surveys in the area. However, our cumulative knowledge of the archaeology of the Karoo suggests that the cumulative impact of the Soyuz SPV Cluster and other projects within a 30km on archaeological resources is likely to be low.			
CONFIDENCE	High			
MITIGATION MEASURES	Avoid the lithic scatter at JKG007 and the rock gong (G005) through the implementation of a permanent no-go area or buffer around it. Report any chance finds of significant archaeological material to SAHRA and/or an archaeologist.			

5.1.3 Graves or Burials

Human graves or burials could be impacted almost anywhere on the site, but the probability of this happening during activities earthworks associated with the construction and decommissioning of the Soyuz 4 project is extremely low and the significance rating is thus **very low negative** both without and with the implementation of mitigation measures.

Table 8: Impacts on Graves or Burials

IMPACT NATURE	Graves and Burials Impact – Disturbance and/or destruction of graves or burials during construction and decommissioning		STATUS	NEGATIVE
Impact Description	Disturbance and/or destruction of graves or burials			
Impact Source(s)	Activities associated with the construction and decommissioning of the SPV facility			
Receptor(s)	Potential human graves or burials			
PARAMETER	WITHOUT MITIGATION	SCORE	WITH MITIGATION	SCORE
EXTENT (A)	Preferred Alternative:	1	Preferred Alternative:	1
	No-Go Alternative:	0	No-Go Alternative:	0
DURATION (B)	Preferred Alternative:	4	Preferred Alternative:	4
	No-Go Alternative:	0	No-Go Alternative:	0
PROBABILITY (C)	Preferred Alternative:	1	Preferred Alternative:	1
	No-Go Alternative:	0	No-Go Alternative:	0

INTENSITY OR MAGNITUDE (D)	Preferred Alternative:	-2	Preferred Alternative:	1
	No-Go Alternative:	0	No-Go Alternative:	0
SIGNIFICANCE RATING (F) = (A*B*D)*C	Preferred Alternative:	-8	Preferred Alternative:	4
	No-Go Alternative:	-0	No-Go Alternative:	+0
CUMULATIVE IMPACTS	<p>Most historical graveyards are associated with farm complexes, whether still occupied or not, and are thus generally avoided in the planning and construction of project such as the Soyuz 1 SPV park.</p> <p>Although unmarked burials can occur anywhere within the landscape, the pre-colonial inhabitants of the area often buried their dead along river courses which are invariably excluded from developments due to their other environmental sensitivity.</p> <p>Overall, therefore, it is likely that the cumulative impacts of this project and others in the vicinity on graves and burials will be very low.</p>			
CONFIDENCE	High			
MITIGATION MEASURES	<p>Cease work immediately in the immediate area if human remains are encountered.</p> <p>Leave remains in situ and make site safe</p> <p>Report the finds to SAHRA and/or an archaeologist.</p>			

5.1.4 Cultural Landscape

The cultural landscape is likely to be the heritage resource most affected by the construction of the SPV facility, but given that it is of low cultural significance, the potential impact is assessed to be **low negative**.

Table 9: Impacts on the Cultural Landscape

IMPACT NATURE	Cultural Landscape Impact - Alteration of the cultural landscape due to the presence of the SPV project		STATUS	NEGATIVE
Impact Description	Alteration of the cultural landscape			
Impact Source(s)	Construction of the SPV facility			
Receptor(s)	Landscape in and around the SPV facility			
PARAMETER	WITHOUT MITIGATION	SCORE	WITH MITIGATION	SCORE
EXTENT (A)	Preferred Alternative:	1	Preferred Alternative:	1
	No-Go Alternative:	0	No-Go Alternative:	0
DURATION (B)	Preferred Alternative:	3	Preferred Alternative:	3
	No-Go Alternative:	0	No-Go Alternative:	0
PROBABILITY (C)	Preferred Alternative:	3	Preferred Alternative:	3
	No-Go Alternative:	0	No-Go Alternative:	0
INTENSITY OR MAGNITUDE (D)	Preferred Alternative:	-2	Preferred Alternative:	1
	No-Go Alternative:	0	No-Go Alternative:	0
SIGNIFICANCE RATING (F) = (A*B*D)*C	Preferred Alternative:	-18	Preferred Alternative:	9
	No-Go Alternative:	-0	No-Go Alternative:	0
CUMULATIVE IMPACTS	<p>Impacts on the cultural landscape could occur extensively if numerous project are constructed in close proximity to one another and especially if these projects contain tall structural elements like turbines or powerlines.</p> <p>These impacts cannot be fully mitigated but the application of the recommendations of visual consultants would likely reduce the impacts from medium to low negative.</p>			
CONFIDENCE	High			
MITIGATION MEASURES	<p>Minimise disturbance footprint during construction and rehabilitate all disturbed areas that will not be needed during operation.</p> <p>At decommissioning, rehabilitate all areas following approved rehabilitation plan.</p>			

Summary table of overall significance:

DESCRIPTION OF IMPACT	Overall Significance with Mitigation	
	No-Go Alternative	Preferred Alternative
Disturbance and/or destruction of palaeontological material during construction and decommissioning	None – no change	Low -ve
Disturbance and/or destruction of archaeological sites and/or materials during construction and decommissioning		Low -ve
Disturbance and/or destruction of graves or burials during construction and decommissioning		Low -ve
Alteration of cultural landscape due to the presence of the SPV project		Low -ve

6 OPPORTUNITIES AND CONSTRAINTS MAPPING

The location of the Soyuz 4 SPV project in areas of high and moderate palaeontological sensitivity is not a red flag or fatal flaw and should not constrain the proposed development, provided suitable measures to mitigate any impacts are implemented as part of the development of the SPV. Mitigation measures will be detailed in the HIA and may include site visits by a palaeontologist, the monitoring of earthworks by the ECO and the implementation of a protocol or mechanism for reporting and dealing with chance finds of fossil material during project activities.

With the exception of JG007 and G005, no other significant archaeological sites or materials have been identified in the Soyuz 4 project area. The bulk of the archaeological sites and materials identified were outside of the SPV in locations where such material is usually expected. Provided JG007 and G005 are avoided by the proposed Soyuz 4 SPV park, other archaeological material encountered during the development of the project is unlikely to represent a major constraint. Most archaeological sites are limited in extent and have much smaller constraints footprints on development that those applicable to biodiversity or ecology, for example. It is generally possible to mitigate or avoid impacts on these resources arising from SPV developments should they be found to be present within the development footprint. Experience from many previous WEF and SPV developments has shown that the presence of archaeological resources within a development area is seldom a fatal flaw, and it is thus very unlikely to be the case for the Soyuz 4 SPV project provided suitable mitigation measures are implemented.

Historical buildings in the Windpoort farm complex immediately south of the Soyuz 4 project area will not be directly affected by the proposed SPV facility but there are likely to be indirect, visual impacts arising from its construction. In the absence of any formal guidelines in the Northern Cape for the minimum distance between renewable energy infrastructure and buildings or structures older than 60 years (particularly if these are occupied and in use), guidance produced by the Western Cape Provincial Government in 2006 related to wind energy infrastructure is often used as a proxy (Provincial Government of the Western Cape, 2006). This recommends that infrastructure is placed at least 500 m from occupied farm buildings (Figure 10). This buffer may be reduced if the building is unoccupied. The presence of historical building in the vicinity of the Soyuz 4 project areas is unlikely to be a fatal flaw.



Figure 11: Indication of the extent of a 500 m buffer around the Windpoort farm complex.

The occurrence of formal historical burial grounds in or near farm complexes means that they are likely to be avoided in the planning and siting of the project, although the proximity of the Windpoort farm complex to the southern boundary of the SPV area suggests caution should be exercised in its vicinity. Historical graves and burials are extremely sensitive heritage receptors, but their presence within the project area is not a fatal flaw, provided they are excluded from impacts during the development process.

With respect to unmarked usually pre-colonial graves, they too are an extremely sensitive and often contested heritage resource, and it is generally impossible to predict their presence in advance of development. However, the inclusion in the project EMP of a procedure for reporting and dealing with chance finds of human remains will ensure that the sensitivity of development area with respect to this potential heritage resource is low and that they will not be a fatal flaw.

The cultural landscape within which the Soyuz 4 SPV park will be located is likely to be the heritage resource most affected by the construction of the SPV facility but given that it is of low cultural significance the impacts will not be a fatal flaw to the project.

7 PLAN OF STUDY FOR THE IMPACT ASSESSMENT PHASE

It is to be expected that SAHRA will request a Heritage Impact Assessment for the Soyuz 4 SPV park as part of the EIA. Given the moderate palaeontological sensitivity of the development site, the HIA will need to include a desk-based palaeontological impact assessment, and possibly a field inspection due to the presence of high sensitivity sediments on the site.

A comment on the HIA will be required from SAHRA on the archaeology and palaeontologic and from the Northern Cape heritage authority (Ngwao-Boswa Ya Kapa Bokoni) on the cultural landscape.

Any comments received from either of these bodies must be considered by the competent authority before issuing an Environmental Authorisation.

8 REFERENCES

- Bekker, E. 2012a. *Heritage Impact Assessment Scoping Report for De Aar Solar One Photovoltaic Power Plant, Northern Cape*. Unpublished report prepared for CCA Environmental. Elise Bekker.
- Bekker, E. 2012b. *Phase 2 Heritage Impact Assessment De Aar Solar One Photovoltaic Power Project*. Unpublished report prepared for CCA Environmental. Elise Bekker.
- Fourie, W. 2012. *Concentrated Solar Power EIA, De Aar: Heritage Impact Assessment*. Unpublished report prepared for SiVEST Environmental Division. PGS.
- Fourie, W. 2014. *Proposed construction of a 132 kV transmission line from the Longyuan Mulilo De Aar 2 North Wind Energy Facility on the Eastern Plateau (De Aar 2) near De Aar, Northern Cape*. Unpublished report prepared for Aurecon Environmental Services. PGS.
- Gribble, J. and Euston-Brown, G.L. 2020. *Heritage Impact Assessment: Proposed Grid Connection and Switching Station for the De Aar 2 South Wind Energy Facility, De Aar, Northern Cape*. Unpublished report prepared for Arcus Consultancy Services South Africa (Pty) Ltd. ACO Associates. Cape Town.
- Gribble, J. and Euston-Brown, G.L. 2021. *Walkdown Report for the Mulilo Total Hydra Transmission Line outside De Aar, Northern Cape*. Unpublished report prepared for Arcus Consultancy Services South Africa (Pty) Ltd. ACO Associates. Cape Town.
- Huffman, T. N., 2013. *Archaeological Impact Assessment for the De Aar Project, Northern Cape*. Unpublished report prepared for Seaton Thompson & Associates: Archaeological Resources Management.
- Kaplan, J. 2010a. *Archaeological impact assessment proposed Photovoltaic Power Generation Facility in De Aar, Northern Cape*. Unpublished report prepared for DJ Environmental Consultants. Agency for Cultural Resource Management.
- Kaplan, J. 2010b. *Archaeological impact assessment of a proposed wind energy facility near De Aar, Northern Cape*. Unpublished report prepared for DJ Environmental Consultants. Agency for Cultural Resource Management.
- Kruger, N. 2012. *Proposed establishment of a solar energy facility near De Aar, Northern Cape Province: Phase 1 Archaeological Impact Assessment Report*. Unpublished report prepared for Ennex Development. N Kruger.
- Orton, J. and Webley, L. 2013a. *Heritage Impact Assessment for multiple proposed solar energy facilities on De Aar 180/1 (Badenhorst Dam farm), De Aar, Northern Cape*. Unpublished report prepared for Aurecon South Africa (Pty) Ltd. ACO Associates.
- Orton, J. and Webley, L. 2013b. *Heritage Impact Assessment for multiple proposed solar energy facilities on Du Plessis Dam 179, De Aar, Northern Cape*. Unpublished report prepared for Aurecon South Africa (Pty) Ltd. ACO Associates.
- Sampson, C.G. 1985. Atlas of Stone Age Settlement in the central and upper Seacow valley. *Memoirs of the National Museum Bloemfontein*. 20:1-116.
- Webley, L. and Orton, J. 2011. *Proposed De Aar Wind Energy Facility on the North and South Plateau, Northern Cape Province*. Unpublished report prepared for Aurecon South Africa

(Pty) Ltd. Archaeology Contracts Office.

9 APPENDIX A: SPECIALIST DECLARATION

(See separate PDF file)

APPENDIX B: CURRICULUM VITAE – JOHN GRIBBLE

(Last updated – 12 January 2023)

Name: John Gribble
Profession: Archaeologist (Maritime)
Date of Birth: 15 November 1965
Parent Firm: ACO Associates cc
Position in Firm: Senior Archaeologist
Years with Firm: 5+
Years of experience: 33
Nationality: South African
HDI Status: n/a

Education:

1979-1983 Wynberg Boys' High School
1986 BA (Archaeology), University of Cape Town
1987 BA (Hons) (Archaeology), University of Cape Town
1990 Master of Arts, (Archaeology) University of Cape Town

Employment:

- September 2017 – present: ACO Associates, Senior Archaeologist and Consultant
- 2014-2017: South African Heritage Resources Agency, Manager: Maritime and Underwater Cultural Heritage Unit
- 2012-2018: Sea Change Heritage Consultants Limited, Director
- 2011-2012: TUV SUD PMSS (Romsey, United Kingdom), Principal Consultant: Maritime Archaeology
- 2009-2011: EMU Limited (Southampton, United Kingdom), Principal Consultant: Maritime Archaeology
- 2005-2009: Wessex Archaeology (Salisbury, United Kingdom), Project Manager: Coastal and Marine
- 1996-2005: National Monuments Council / South African Heritage Resources Agency, Maritime Archaeologist
- 1994-1996: National Monuments Council, Professional Officer: Boland and West Coast, Western Cape Office

Professional Qualifications and Accreditation:

- Member: Association of Southern African Professional Archaeologists (ASAPA) (No. 043)
- Principal Investigator: Maritime and Colonial Archaeology, ASAPA CRM Section
- Field Director: Stone Age Archaeology, ASAPA CRM Section
- Class III Diver (Surface Supply), Department of Labour (South Africa) / UK (HSE III)

Experience:

I have more than 30 years of professional archaeological and heritage management experience. After completing my postgraduate studies and a period of freelance archaeological work in South Africa and abroad, I joined the National Monuments Council (NMC) (now the South African Heritage Resources Agency (SAHRA)) in 1994. In 1996 I

become the NMC's first full-time maritime archaeologist and in this regulatory role was responsible for the management and protection of underwater cultural heritage in South Africa under the National Monuments Act, and subsequently under the National Heritage Resources Act.

In 2005 I moved to the UK to join Wessex Archaeology, one of the UK's biggest archaeological consultancies, as a project manager in its Coastal and Marine Section. In 2009 I joined Fugro EMU Limited, a marine geosurvey company to set up their maritime archaeological section. I then spent a year at TUV SUD PMSS, an international renewable energy consultancy, where I again provided maritime archaeological consultancy services to principally the offshore renewable and marine aggregate industries.

In August 2012 I established Sea Change Heritage Consultants Limited, a maritime archaeological consultancy. Sea Change traded until 2018, providing archaeological services to a range of UK maritime sectors, including marine aggregates and offshore renewable energy.

In the UK I was also involved in strategic projects which developed guidance and best practice for the UK offshore industry with respect to the marine historic environment. This included the principal authorship of two historic environment guidance documents for COWRIE and the UK renewable energy sector (*Historical Environment Guidance for the Offshore Renewable Energy Sector* (2007) and *Offshore Geotechnical Investigations and Historic Environment Analysis: Guidance for the Renewable Energy Sector* (2010)). I was also manager and lead author in the development of the archaeological elements of the first Regional Environmental Assessments for the UK marine aggregates industry, and in the 2009 *UK Continental Shelf Offshore Oil and Gas and Wind Energy Strategic Environmental Assessment* for Department of Energy and Climate Change. In 2013-14 I was lead author and project co-ordinator on *The UNESCO Convention on the Protection of the Underwater Cultural Heritage 2001: An Impact Review for the United Kingdom* and in 2016 I was co-author of a Historic England / Crown Estate / British Marine Aggregate Producers Association funded review of marine historic environment best practice guidance for the UK offshore aggregate industry.

I returned to South African in mid-2014 where I was re-appointed to my earlier post at SAHRA: Manager of the Maritime and Underwater Cultural Heritage Unit. In July 2016 I was appointed as Acting Manager of SAHRA's Archaeology, Palaeontology and Meteorites Unit.

I left SAHRA in September 2017 to join ACO Associates as Senior Archaeologist and Consultant. Since being at ACO I have carried out a wide range of terrestrial and maritime archaeological assessments, many of which are listed in the following section.

In 2018 of the potential impacts of marine mining on South Africa's palaeontological and archaeological heritage for the Council for Geoscience, on behalf of the Department of Mineral Resources.

I have been a member of the Association of Southern African Professional Archaeologists (No. 043) for more than thirty years and am accredited by ASAPA's Cultural Resource Management section.

I have been a member of the ICOMOS International Committee for Underwater Cultural Heritage since 2000 and served as a member of its Bureau between 2009 and 2018.

Since 2010 I have been a member of the UK's Joint Nautical Archaeology Policy Committee.

I am a member of the Advisory Board of the George Washington University / Iziko Museums of South Africa / South African Heritage Resources Agency / Smithsonian Institution 'Southern African Slave Wrecks Project'.

I have served on the Heritage Western Cape Archaeology, Palaeontology and Meteorites Committee since 2014.

Selected Project Reports:

Gribble, J. 2017. *Archaeological Assessment of Farm No 8/851, Drakenstein*. Unpublished report prepared for Balwin Properties Pty Ltd. ACO Associates.

Gribble, J. 2017. *Archaeological Assessment of Bosjes Phase 2, Farm 218 Witzenberg*. Unpublished report prepared for Farmprops 53 (Pty) Ltd. ACO Associates.

Gribble, J. 2017. *Canal Precinct, V&A Waterfront: Heritage Impact Assessment*. Unpublished report prepared for Nicolas Baumann Urban Conservation and Planning. ACO Associates.

Gribble, J. 2017. *Archaeological Assessment of the proposed dam on the farm Constantia Uitsig, Erven 13029 and 13030, Cape Town*. Unpublished report prepared for SLR Consulting (South Africa) (Pty) Ltd. ACO Associates.

Gribble, J. 2017. *Archaeological Assessment of Erf 4722 Blouvillei, Wellington*. Unpublished report prepared for Urban Dynamics Western Cape (Pty) Ltd. ACO Associates.

Hart, T.G., Gribble, J. & Robinson, J. 2017 *Heritage Impact Assessment for the Proposed Phezukomoya Wind Energy Facility to be Situated in the Northern Cape*. Unpublished report prepared for Arcus Consulting. ACO Associates.

Hart, T.G., Gribble, J. & Robinson, J. 2017 *Heritage Impact Assessment for the Proposed San Kraal Wind Energy Facility to be Situated in the Northern Cape*. Unpublished report prepared for Arcus Consulting. ACO Associates.

Gribble, J. 2018. *Integrated Heritage Impact Assessment of the Peter Falke Winery on Farm 1558 Groenvlei, Stellenbosch*. Unpublished report prepared for Werner Nel Environmental Consulting Services. ACO Associates.

Gribble, J. & Halkett, D. 2018. *Heritage Impact Assessment for a Proposed Extension of the Kaolin Mine on Portion 1 of the Farm Rondawel 638, Namaqualand District, Northern Cape*. Unpublished report prepared for Rondawel Kaolien (Pty) Ltd. ACO Associates.

Gribble, J. 2019. *Archaeological Impact Assessment for Proposed Sand Mining on Portion 2 of Farm Kleinfontein 312, Klawer District, Western Cape*. Unpublished report prepared for Green Direction Sustainability Consulting (Pty) Ltd. ACO Associates.

Halkett, D. & Gribble, J. 2018. *Archaeological/Heritage Report for the Expansion of the Current Granite Mining at Oeranoep and Ghaams, Northern Cape Province*. Unpublished report

- prepared for Klaas Van Zyl. ACO Associates.
- Gribble, J. 2018. *Potential Impacts of Marine Mining on South Africa's Palaeontological and Archaeological Heritage*. Report prepared for Council for Geoscience. ACO Associates.
- Gribble, J. 2018. *Maritime Heritage Impact Assessment: Block ER236, Proposed Exploration Well Drilling*. Unpublished report prepared for ERM Southern Africa (Pty) Ltd. ACO Associates.
- Gribble, J. 2018. *Maritime Heritage Impact Assessment: IOX Cable Route*. Unpublished report prepared for ERM Southern Africa. ACO Associates.
- Gribble, J. 2018. *Archaeological Assessment of the Terrestrial Portion of the IOX Cable Route*. Unpublished report prepared for ERM Southern Africa. ACO Associates.
- Gribble, J. 2018. *Archaeological Assessment: Erven 11122, 11123, 11124, 11125, 11126, 11127 and Re 11128, Corner Frere Street and Albert Road, Woodstock, Cape Town*. Unpublished report prepared for Johan Cornelius. ACO Associates.
- Gribble, J. 2018. *Maritime Heritage Impact Assessment: Expansion of Diamond Coast Aquaculture Farm on Farm 654, Portion 1, Kleinzee, Northern Cape*. Unpublished report prepared for ACRM. ACO Associates.
- Gribble, J. 2018. *Heritage Impact Assessment: Ship Repair Facility, Port of Mossel Bay*. Unpublished report prepared for Nemaï Consulting. ACO Associates.
- Gribble, J. 2018. *Archaeological Assessment: Sites B and C, Portswood Ridge Precinct, V&A Waterfront*. Unpublished report prepared for Urban Conservation. ACO Associates.
- Gribble, J. 2018. *Heritage Impact Assessment: Zandrug, Farm Re 9/122, Cederberg*. Unpublished report prepared for Cederberg Environmental Assessment Practice. ACO Associates.
- Gribble, J. and Hart, T.G. 2018. *Initial Assessment Report and Motivation for Exploratory Permit, Erf 4995, corner of Waterfall and Palace Hill Roads, Simonstown*. Unpublished report prepared for Regent Blue Sayers' Lane (Pty) Ltd. ACO Associates.
- Gribble, J. and Hart, T.G. 2018. *Initial investigation report with respect to human remains found at Erf 4995, corner of Waterfall and Palace Hill Roads, Simonstown*. Unpublished permit report prepared for Regent Blue Sayers' Lane (Pty) Ltd. ACO Associates.
- Gribble, J. 2019. *Maritime Heritage Impact Assessment: ASN Africa METISS Subsea Fibre Optic Cable System*. Unpublished report prepared for ERM Southern Africa. ACO Associates.
- Gribble, J. 2019. *Maritime Archaeological Impact Assessment of Proposed Aquaculture Areas 1, 6 And 7, Algoa Bay, Eastern Cape Province*. Unpublished report prepared for Anchor Research & Monitoring (Pty) Ltd. ACO Associates.
- Gribble, J. 2019. *Heritage Impact Assessment: Rooilandia Farm Dam, Pipeline and New Irrigation Areas*. Unpublished report prepared for Cornerstone Environmental Consultants. ACO Associates.
- Gribble, J. 2019. *Maritime Archaeological Impact Assessment of Proposed Equiano Cable System, landing at Melkbosstrand, Western Cape Province*. Unpublished report

prepared for Acer (Africa) Environmental Consultants. ACO Associates.

Gribble, J. 2019. *Heritage Baseline for Prospecting Right Applications: Sea Concession Areas 14b, 15b and 17b, West Coast, Western Cape Province*. Unpublished report prepared for SLR Consulting. ACO Associates.

Gribble, J. & Euston-Brown, G.L. 2019. *Archaeological Amendment Report: San Kraal Wind Energy Facility, Noupoort, Northern Cape*. Unpublished report prepared for Arcus Consulting. ACO Associates.

Gribble, J. & Euston-Brown, G.L. 2019. *Archaeological Amendment Report: Phezukomoya Wind Energy Facility, Noupoort, Northern Cape*. Unpublished report prepared for Arcus Consulting. ACO Associates.

Gribble, J. & Euston-Brown, G.L. 2019. *Archaeological Amendment Report: Hartebeeshoek West Wind Energy Facility, Noupoort, Northern Cape*. Unpublished report prepared for Arcus Consulting. ACO Associates.

Gribble, J. & Euston-Brown, G.L. 2019. *Archaeological Amendment Report: Hartebeeshoek East Wind Energy Facility, Noupoort, Northern Cape*. Unpublished report prepared for Arcus Consulting. ACO Associates.

Gribble, J. & Euston-Brown, G.L. 2019. *Heritage Assessment: Infrastructure Associated with the San Kraal, Phezukomoya and Hartebeeshoek East and West Wind Energy Facilities, Noupoort, Northern Cape*. Unpublished report prepared for Arcus Consulting. ACO Associates.

Gribble, J. & Euston-Brown, G.L. 2020. *Heritage Impact Assessment: Proposed Grid Connection for the De Aar 2 South Wind Energy Facility, De Aar, Northern Cape*. Unpublished report prepared for Arcus Consulting. ACO Associates.

Gribble, J., Euston-Brown, G.L. & Hart, T. 2020. *Heritage Impact Assessment: Proposed Construction of Five Guest Cottages on the Farm Groenfontein (Farm 96), Outside Ceres, Western Cape*. Unpublished report prepared for Doug Jeffery Environmental Consultants. ACO Associates.

Gribble, J. 2020. *Maritime Archaeological Impact Assessment for Prospecting Rights Applications: Sea Concession Areas 14b, 15b and 17b, West Coast, Western Cape Province*. Unpublished report prepared for SLR Consulting. ACO Associates.

Gribble, J. 2020. *Maritime Archaeological Impact Assessment for Prospecting Rights Applications: Sea Concession Areas 13C and 15C - 18C, West Coast, Western Cape Province*. Unpublished report prepared for SLR Consulting. ACO Associates.

Gribble, J. 2020. *Heritage Impact Assessment for Proposed Sand Mining on Portion 2 Of Farm Kleinfontein 312, Klaver District, Western Cape*. Unpublished report prepared for Green Direction Sustainability Consulting (Pty) Ltd. ACO Associates.

Gribble, J. 2020. *Archaeological Assessment: Erven 10712 and Re 14932, Corner Railway Street and Albert Road, Woodstock, Cape Town*. Unpublished report prepared for Claire Abrahamse. ACO Associates.

Gribble, J. & Euston-Brown, G.L. 2020. *Heritage Impact Assessment: Leliefontein to Conmarine Bulk Water Pipeline, between Paarl and Wellington*. Unpublished report prepared for Aurecon South Africa (Pty) Ltd. ACO Associates.

Gribble, J. & Euston-Brown, G.L. 2020. *Heritage Impact Assessment: Proposed Expansion of the Sand Mine on Portion 4 of The Farm Zandbergfontein, Robertson, Western Cape*. Unpublished report prepared for Greenmined Environmental. ACO Associates.

Gribble, J. 2021. *Maritime Archaeological Impact Assessment of Proposed 2AFRICA/GERA (East) Submarine Fibre Optic Cable System, Landing at Duynfontein, Western Cape Province*. Unpublished report prepared for Acer (Africa) Environmental Consultants. ACO Associates.

Gribble, J. 2021. *Maritime Archaeological Impact Assessment of Proposed 2AFRICA/GERA (West) Submarine Fibre Optic Cable System, Landing at Yzerfontein, Western Cape Province*. Unpublished report prepared for Acer (Africa) Environmental Consultants. ACO Associates.

Gribble, J. 2021. *Heritage Impact Assessment: Beaufort West Photovoltaic Project, outside Beaufort West, Western Cape*. Unpublished report prepared for Nemai Consulting (Pty) Ltd. ACO Associates.

Gribble, J. 2021. *Heritage Impact Assessment: Proposed Esizayo 132KV Transmission Integration Project, on Farms Standvastigheid 210 Remainder and Aurora 285, Western and Northern Cape*. Unpublished report prepared for WSP Group Africa (Pty) Ltd. ACO Associates.

Gribble, J. 2022. *Heritage Impact Assessment: Proposed Oceana 10 MW Solar Photovoltaic Facility, on Portion 4 of Farm 6 Duyker Eiland, St Helena Bay, Western Cape*. Unpublished report prepared for SRK Consulting (South Africa) (Pty) Ltd. ACO Associates.

Gribble, J. & Euston-Brown, G. 2021. *Heritage Impact Assessment: Proposed Photovoltaic Facility on Remainder of Farm Vaal Rivier 261, Farm Vaal Kloof 262, Portion 1 of Farm Jurgens Fontein 263, Portion 2 of Farm Kolkies Rivier 234 and Portion 1 of Farm Eiberg West 260, East of Ceres, Western Cape*. Unpublished report prepared for Ecocompliance. ACO Associates.

Publications:

Gribble, J. and Scott, G., 2017, *We Die Like Brothers: The sinking of the SS Mendi*, Historic England, Swindon.

Sharfman, J., Boshoff, J. and Gribble, J. 2017. Benefits, Burdens, and Opportunities in South Africa: The Implications of Ratifying the 2001 UNESCO Convention on the Protection of Underwater Cultural Heritage, in L. Harris (ed) *Sea Ports and Sea Power: African Maritime Cultural Landscapes*, Springer International Publishing, Switzerland, pp 101-110.

Lloyd Jones, D., Langman, R., Reach, I., Gribble, J., and Griffiths, N., 2016, Using Multibeam and Sidescan Sonar to Monitor Aggregate Dredging, in C.W. Finkl and C. Makowski (eds) *Seafloor Mapping along Continental Shelves: Research and Techniques for Visualizing Benthic Environments, Coastal Research Library 13*, Springer International Publishing, Switzerland, pp 245-259.

Athiros, G. and Gribble, J., 2015, *Wrecked at the Cape Part 2, The Cape Odyssey* 105,

Historical Media, Cape Town.

Gribble, J. and Sharfman, J., 2015, The wreck of SS Mendi (1917) as an example of the potential trans-national significance of World War I underwater cultural heritage, *Proceedings of the UNESCO Scientific Conference on the Underwater Cultural Heritage from World War I*, Bruges, 26-28 June 2014.

Gribble, J., 2015, Underwater Cultural Heritage and International Law. Cambridge by Sarah Dromgoole, in *South African Archaeological Bulletin*, 70, 202, pp 226-227.

Athiros, G. and Gribble, J., 2014, *Wrecked at the Cape Part 1*, The Cape Odyssey 104, Historical Media, Cape Town.

Gribble, J., 2014, Learning the Hard Way: Two South African Examples of Issues Related to Port Construction and Archaeology, in *Dredging and Port Construction: Interactions with Features of Archaeological or Heritage Interest*, *PIANC Guidance Document 124*, pp 97-107.

UK UNESCO 2001 Convention Review Group, 2014, *The UNESCO Convention on the Protection of the Underwater Cultural Heritage 2001: An Impact Review for the United Kingdom*, ISBN 978-0-904608-03-8.

Sadr, K., Gribble, J. and Euston-Brown, G., 2013, Archaeological survey on the Vredenburg Peninsula, in Jerardino et al. (eds), *The Archaeology of the West Coast of South Africa*, BAR International Series 2526, pp 50-67.

Gribble, J. and Sharfman, J., 2013, Maritime Legal Management in South Africa, *Online Encyclopaedia of Global Archaeology*, pp 6802-6810.

Gribble, J., 2011, The UNESCO Convention on the Protection of the Underwater Cultural Heritage 2001, *Journal of Maritime Archaeology* 6:1 77-86.

Gribble, J., 2011, The SS Mendi, the Foreign Labour Corps and the trans-national significance of shipwrecks, in J. Henderson (ed.): *Beyond Boundaries, Proceedings of IKUWA 3, The 3rd International Congress on Underwater Archaeology*, Römisch-Germanische Kommission (RGK), Frankfurt.

Gribble, J., 2011, Competence and Qualifications, in Guèrin, U., Egger, B. and Maarleveld, T. (eds) *UNESCO Manual for Activities directed at Underwater Cultural Heritage*, UNESCO - Secretariat of the 2001 Convention, Paris.

Gribble, J. and Leather, S. for EMU Ltd., 2010, *Offshore Geotechnical Investigations and Historic Environment Analysis: Guidance for the Renewable Energy Sector*. Commissioned by COWRIE Ltd (Project reference GEOARCH-09).

Sadr, K and Gribble, J., 2010, The stone artefacts from the Vredenburg Peninsula archaeological survey, west coast of South Africa, *Southern African Humanities* 22: 19–88.

- Gribble, J., 2009, HMS Birkenhead and the British warship wrecks in South African waters in *Proceedings of the Shared Heritage Seminar*, University of Wolverhampton, 8 July 2008.
- Gribble, J., Parham, D. and Scott-Ireton, D., 2009, Historic Wrecks: Risks or Resources? In *Conservation and Management of Archaeological Sites*, Vol. 11 No. 1, March, 2009, 16–28.
- Gribble, J. and Athiros, G., 2008, *Tales of Shipwrecks at the Cape of Storms*, Historical Media, Cape Town.
- Gribble, J., 2008, The shocking story of the ss Mendi, in *British Archaeology*, March/April 2008.
- Gribble, J., 2007, The Protection of the Underwater Cultural Heritage: National Perspectives in light of the UNESCO Convention 2001 by Sarah Dromgoole, in *The International Journal of Nautical Archaeology*, 36, 1, pp 195-6.
- Gribble, J., 2006, The Sad Case of the ss Maori, in Grenier, R., D. Nutley and I. Cochran (eds) *Underwater Cultural Heritage at Risk: Managing Natural and Human Impacts*, pp 41-43, ICOMOS, Paris.
- Gribble, J., 2006, Pre-Colonial Fish Traps on the South Western Cape Coast, South Africa, in Grenier, R., D. Nutley and I. Cochran (eds) *Underwater Cultural Heritage at Risk: Managing Natural and Human Impacts*, pp 29-31, ICOMOS, Paris.
- Forrest, C.S.J., and Gribble, J., 2006, The illicit movement of underwater cultural heritage: The case of the Dodington coins, in *Art and Cultural Heritage: Law, Policy and Practice*, (ed B.T. Hoffman), New York, Cambridge University Press.
- Forrest, C.S.J., and Gribble, J., 2006, Perspectives from the Southern Hemisphere: Australia and South Africa, in *The UNESCO Convention for the Protection of the Underwater Heritage: Proceedings of the Burlington House Seminar*, October 2005, JNAPC / NAS.
- Gribble, J., 2003, “Building with Mud” – Developing historical building skills in the Karoo, in ICOMOS South Africa, in *The Proceedings of Symposium on Understanding and using urban heritage in the Karoo*, Victoria West, South Africa, 3-5 March 2002.
- Forrest, C.S.J., and Gribble, J., 2002, The illicit movement of underwater cultural heritage: The case of the Dodington coins, *International Journal of Cultural Property*, Vol II (2002) No 2, pp 267-293.
- Gribble, J. 2002, The Past, Present and Future of Maritime Archaeology in South Africa, *International Handbook of Underwater Archaeology* (eds Ruppe and Barstad), New York, Plenum Press.
- Thackeray, F. and Gribble, J., 2001, Historical Note on an Attempt to Salvage Iron from a Shipwreck, *Looking Back*, Vol 40, November 2001, pp 5-7.

- Gribble, J., 1998, Keeping Our Heads Above Water – the development of shipwreck management strategies in South Africa, *AIMA Bulletin*, Vol 22, pp 119-124.
- Gribble, J. 1996, Conservation Practice for Historical Shipwrecks, Monuments and Sites of South Africa, Colombo, Sri Lanka, ICOMOS 11th General Assembly.
- Gribble, J. 1996, National Databases on Monuments and Sites, Monuments and Sites of South Africa, Colombo, Sri Lanka, ICOMOS 11th General Assembly.
- Sadr, K, Gribble, J, & Euston-Brown, G L, 1992 The Vredenburg Peninsula survey, 1991/1992 season, *Guide to Archaeological Sites in the South-western Cape, Papers compiled for the South African Association of Archaeologists Conference*, July 1992, by A.B. Smith & B. Mutti, pp 41-42.
- Smith, AB, Sadr, K, Gribble, J, & Yates, R., 1992 Witklip and Posberg Reserve, *Guide to Archaeological Sites in the South-western Cape*, Papers compiled for the South African Association of Archaeologists Conference, July 1992, by A.B. Smith & B. Mutti, pp 31-40.
- Smith, AB, Sadr, K, Gribble, J & Yates, R., 1991, Excavations in the south-western Cape, South Africa, and the archaeological identity of prehistoric hunter-gatherers within the last 2000 years, *The South African Archaeological Bulletin* 46: 71-91.

APPENDIX C: IMPACT ASSESSMENT METHODOLOGY

9.1 Definitions of Terminology

ITEM	DEFINITION
EXTENT	
Local	Extending only as far as the boundaries of the activity, limited to the site and its immediate surroundings
Regional	Impact on the broader region
National	Will have an impact on a national scale or across international borders
DURATION	
Short-term	0-5 years
Medium-Term	5-15 years
Long-Term	>15 years, where the impact will cease after the operational life of the activity
Permanent	Where mitigation, either by natural process or human intervention, will not occur in such a way or in such a time span that the impact can be considered transient.
MAGNITUDE OR INTENSITY	
Low	Where the receiving natural, cultural or social function/environment is negligibly affected or where the impact is so low that remedial action is not required.
Medium	Where the affected environment is altered, but not severely and the impact can be mitigated successfully and natural, cultural or social functions and processes can continue, albeit in a modified way.
High	Where natural, cultural or social functions or processes are substantially altered to a very large degree. If a negative impact then this could lead to unacceptable consequences for the cultural and/or social functions and/or irreplaceable loss of biodiversity to the extent that natural, cultural or social functions could temporarily or permanently cease.
PROBABILITY	
Improbable	Where the possibility of the impact materialising is very low, either because of design or historic experience
Probable	Where there is a distinct possibility that the impact will occur
Highly Probable	Where it is most likely that the impact will occur
Definite	Where the impact will undoubtedly occur, regardless of any prevention measures
SIGNIFICANCE	
Low	Where a potential impact will have a negligible effect on natural, cultural or social environments and the effect on the decision is negligible. This will not require special design considerations for the project
Medium	Where it would have, or there would be a moderate risk to natural, cultural or social environments and should influence the decision. The project will require modification or mitigation measures to be included in the design
High	Where it would have, or there would be a high risk of, a large effect on natural, cultural or social environments. These impacts should have a major influence on decision making.
Very High	Where it would have, or there would be a high risk of, an irreversible negative impact on biodiversity and irreplaceable loss of natural capital that could result in the project being environmentally unacceptable, even with mitigation. Alternatively, it could lead to a major positive effect. Impacts of this nature must be a central factor in decision making.
STATUS OF IMPACT	

Whether the impact is positive (a benefit), negative (a cost) or neutral (status quo maintained)
DEGREE OF CONFIDENCE IN PREDICTIONS
The degree of confidence in the predictions is based on the availability of information and specialist knowledge (e.g. low, medium or high)
MITIGATION
Mechanisms used to control, minimise and or eliminate negative impacts on the environment and to enhance project benefits Mitigation measures should be considered in terms of the following hierarchy: (1) avoidance, (2) minimisation, (3) restoration and (4) off-sets.

9.2 Scoring System for Impact Assessment Ratings

To comparatively rank the impacts, each impact has been assigned a score using the scoring system outlined in the Table below. This scoring system allows for a comparative, accountable assessment of the indicative cumulative positive or negative impacts of each aspect assessed.

IMPACT PARAMETER	SCORE	
Extent (A)	Rating	
Local	1	
Regional	2	
National	3	
Duration (B)	Rating	
Short term	1	
Medium Term	2	
Long Term	3	
Permanent	4	
Probability (C)	Rating	
Improbable	1	
Probable	2	
Highly Probable	3	
Definite	4	
IMPACT PARAMETER	NEGATIVE IMPACT SCORE	POSITIVE IMPACT SCORE
Magnitude/Intensity (D)	Rating	Rating
Low	-1	1
Medium	-2	2
High	-3	3
SIGNIFICANCE RATING (F) = (A*B*D)*C	Rating	Rating
Low	0 to - 40	0 to 40
Medium	- 41 to - 80	41 to 80
High	- 81 to - 120	81 to 120
Very High	> - 120	> 120

Please complete the following Tables for **EACH IDENTIFIED IMPACT**.

IMPACT NATURE	Impact – Nature of Impact Eg. Botanical Impact – Loss of natural	STATUS	POSITIVE/NEGATIVE
---------------	---	--------	-------------------

	vegetation			
Impact Description				
Impact Source(s)				
Receptor(s)				
PARAMETER	WITHOUT MITIGATION	SCORE	WITH MITIGATION	SCORE
EXTENT (A)	Preferred Alternative:		Preferred Alternative:	
	No-Go Alternative:		No-Go Alternative:	
DURATION (B)	Preferred Alternative:		Preferred Alternative:	
	No-Go Alternative:		No-Go Alternative:	
PROBABILITY (C)	Preferred Alternative:		Preferred Alternative:	
	No-Go Alternative:		No-Go Alternative:	
INTENSITY OR MAGNITUDE (D)	Preferred Alternative:		Preferred Alternative:	
	No-Go Alternative:		No-Go Alternative:	
SIGNIFICANCE RATING (F) = (A*B*D)*C	Preferred Alternative:		Preferred Alternative:	
	No-Go Alternative:		No-Go Alternative:	
CUMULATIVE IMPACTS				
CONFIDENCE				
MITIGATION MEASURES				

Summary table of overall significance:

DESCRIPTION OF IMPACT	Overall Significance	
	No-Go Alternative	Preferred Alternative

Examples for Table 2:

Description of impact: Loss of endangered vegetation types and plant species

Overall Significance with mitigation: Low/Moderate/High/Very High +/- (eg. High +)