



eTHEKWINI GMC PROJECT

TERMS OF REFERENCE

1) Background

The Department of Environmental Affairs (DEA) has appointed Nemaï Consulting as the Implementing Agent for the eThekwini GMC Project. DEA therefore requested Nemaï Consulting to undertake an Environmental Screening for the proposed location of the project.

DEA, through its Environmental Protection and Infrastructure Programmes (EPIP) (specifically the Working on Waste (WoW) focus area) has launched the Greenest Town Municipality Competition (GMC). The eThekwini Metropolitan Municipality has won the GMC in 2009/10 and 2010/11. Using the combination of funds from the two awards, the eThekwini GMC Project involves the construction of the Ohlange Ecological Education Centre.

The Ohlange Ecological Education Centre is aimed at providing environmental education to assist learners and the community members with knowledge of sustainable environmental practices.

Its objective of the eThekwini GMC project is to provide target groups with skills to start, grow and maintain vegetable gardens and nurseries, to educate the target group about the impacts of waste generated and the benefits of minimizing waste through recycling, reducing and re using (Durban Cleansing and Solid Waste Unit, 2014).

The school groups will benefit from the centre as it will enable them to integrate what they have learnt in the classroom with the practical skills obtained at the centre. The community and school groups will benefit from the centre as continuous workshops will be held to provide education and training. The workshops will also encourage profitable farming thereby creating business opportunities and reducing poverty (Durban Cleansing and Solid Waste Unit, 2014).

In addition the centre promotes planting of indigenous trees through the creation a nursery at the site. This will be support by arbour month activities that take place annually in September.

As the area is within the Inanda Heritage Route and neighbours two heritage sites, the Ohlange Ecological Education Centre it will also benefit the tourism industry by promoting eco-tourism (Durban Cleansing and Solid Waste Unit, 2014).

2) Location

The proposed location for the Ohlange Ecological Education Centre is 21 Mxokozeli Hlatshwayo Street, Langalibalele, Inanda in KwaZulu-Natal Province. The property falls on erf 267 of the Ohlanga Township in the eThekwini Metropolitan Municipality. The site is easily accessible through the municipal M25 road as is approximately 30 Km north of Durban.

Figure 1 provides a Google Earth Image showing the erf 267 that the Ohlange Ecological Education Centre will be built on. The co-ordinates for the project as shown in the figure below are -29.698923 S, 30.956042 E.

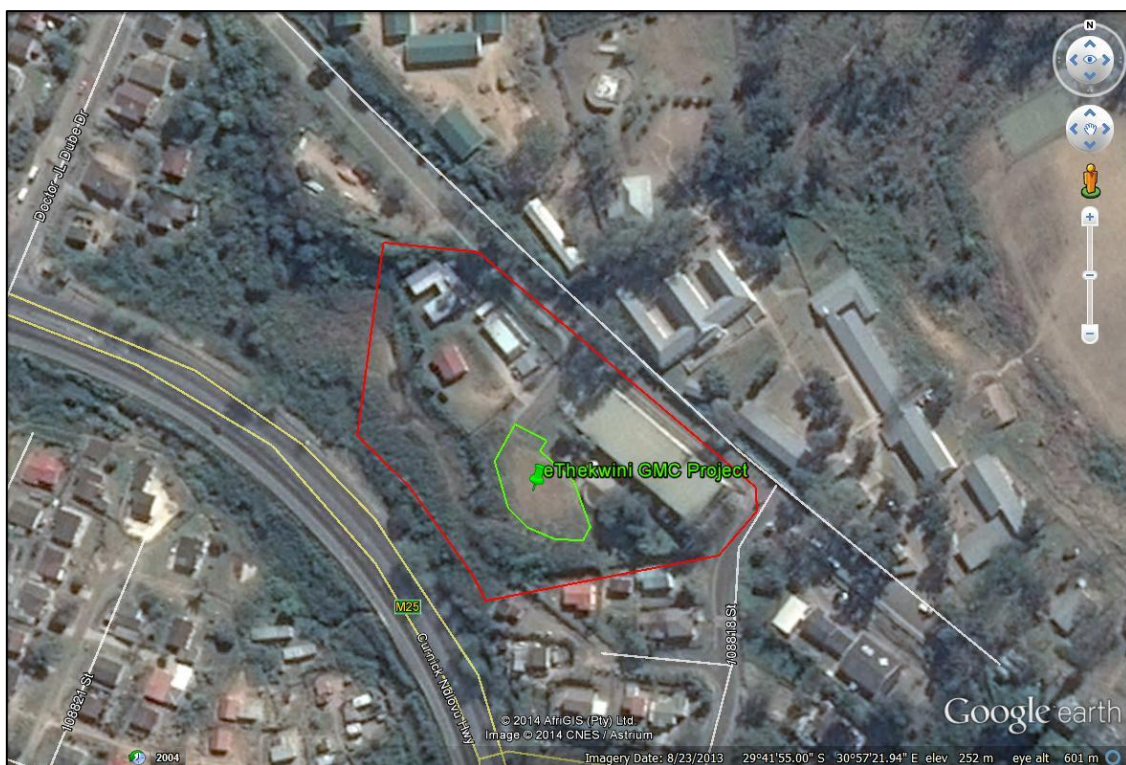


Figure 1: Google Earth Image of erf and proposed site location

The area available for use for Eco Centre is shown in green in Figure 1. There is a municipal library, an IT hub and the office of the Ward Councillor on the property.



Figure 2: Photograph of the site facing south east

The site falls in close proximity of the Inanda Heritage Trail or the “Freedom route” in Inanda. The Ohlange Institute, which was established by Rev. John Dube, the first president of the African National Congress. The Ohlange Institute is also the historical site where former president Nelson Mandela cast his vote in South Africa's first democratic elections in 1994.

Also located in Inanda, is the Inanda Seminary. Established in 1869 by the missionary Mary Edwards, the seminary is one of the oldest African private schools for girls, and has recently undergone a complete restoration. As both the Ohlange Institute and the school neighbour the site location a Heritage Impact Assessment Report is recommended.

The figure 2 below is a Google Earth Image of heritage sites in close proximity to the study area.



Figure 3: Google Earth Image of heritage sites in close proximity to the study area

3) Scope of Works

The Ohlange Ecological Education Centre will have the following activities to facilitate learning:

- Ecological Education Centre with ablution facilities. The size of the centre will be confirmed by the Architect; and
- A nursery – size to be confirmed by landscape architect.

While the buildings are less than a 0.5 hectares the site boundary is likely to exceed 0.5 ha hence triggering a Heritage Impact Assessment.

Kindly confirm is a HIA exemption will apply to the facility. We would need this to be done urgently. If possible, kindly indicate is a HIA exemption is possible by the 17th July 2015. We will extend this deadline if a full HIA is required.