



CAMDEN ASH DISPOSAL

HERITAGE IMPACT ASSESSMENT

ADDENDUM I

Table of Contents

Site 001	6
Site 002	7
Management Recommendations.....	8
Significance Rating	8
Impact Rating	9
Management Recommendations.....	10

List of Figures

FIGURE 1. LOCATION OF GRAVESITES INDICATED ON AERIAL IMAGE.....	3
FIGURE 2. LOCATION OF GRAVESITES INDICATED ON TOPOSHEET	4
FIGURE 3. LOCATION OF GRAVESITES SHOWN ON GENERAL ARRANGEMENT PLAN	5
FIGURE 4. GRAVES AT GRAVESITE 001	6
FIGURE 5. IRREGULAR GRAVE DRESSINGS AT GRAVESITE 001	7
FIGURE 6. GRAVE CAIRNS AT GRAVESITE 002.....	8

List of Tables

TABLE 1: SHOWING SIGNIFICANCE RATING FOR GRAVES/GRAVESITES	8
--	---



ADDENDUM I

G&A Heritage completed a Heritage Impact Assessment for the proposed Camden Ash Disposal Facilities during December 2011. The findings of this study were provided in the report titled ***Phase 1 Heritage Impact Assessment, First Phase Heritage Impact Assessment for the Proposed Extension to the Camden Ash Disposal Facilities (03/12/2011)***.

During this study several alternative sites were investigated for the placement of the Ash Disposal Facility. Two possible grave sites were identified during a geotechnical investigation. G & A Heritage was requested to confirm whether these sites were in fact grave site and if so, assess them. These sites were obscured by high grass during the original study as the site visit was done in summer, so the sites were not reported on. This Addendum to the original heritage report gives the location of these sites as well as management recommendations.

Refer to Figure 1 to 3 that show the position of the gravesites on site, and in relation to the proposed infrastructure for the future Ash Disposal Facility.

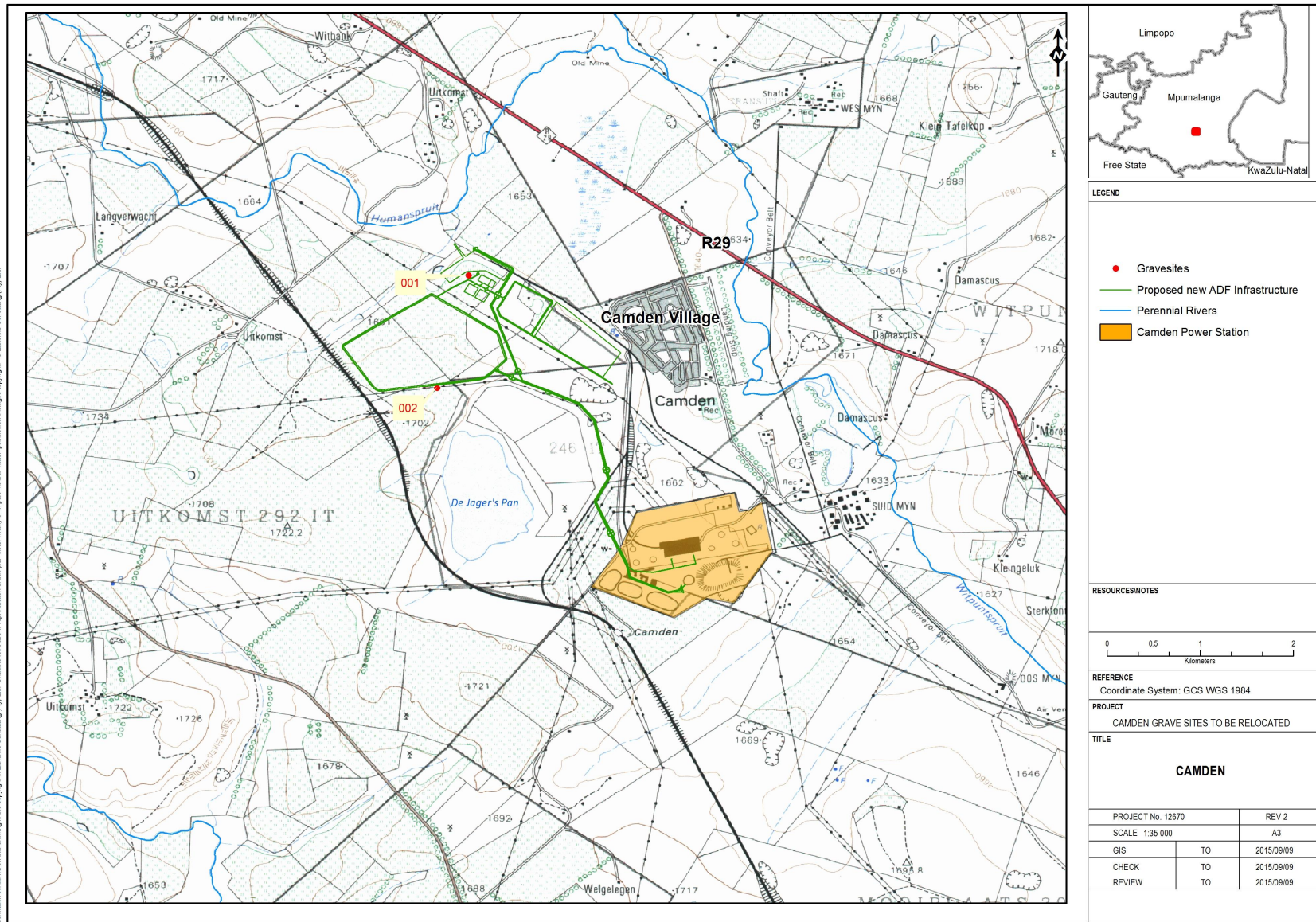
Vorster Street 38 A, Louis Trichardt, 0920, South Africa

PO Box 522, Louis Trichardt, 0920

Tel +27 15 516 1561 Cell +27 73 752 6583



Figure 1. Location of gravesites indicated on Aerial Image



Information contained on this drawing is the copyright of Zibohle Consulting (Pty) Ltd. Unauthorised use or reproduction of this plan either wholly or in part without written permission infringes copyright. © Zibohle Consulting (Pty) Ltd.

Z:\Projects\12670 - EIA for ADF Camden PS\Drawings\MXD\Revised DEIR Maps\12670-77-Map-002-Locality Map Grave Addendum-Rev2-9 Sep 2015.mxd

Figure 2. Location of gravesites indicated on Toposheet

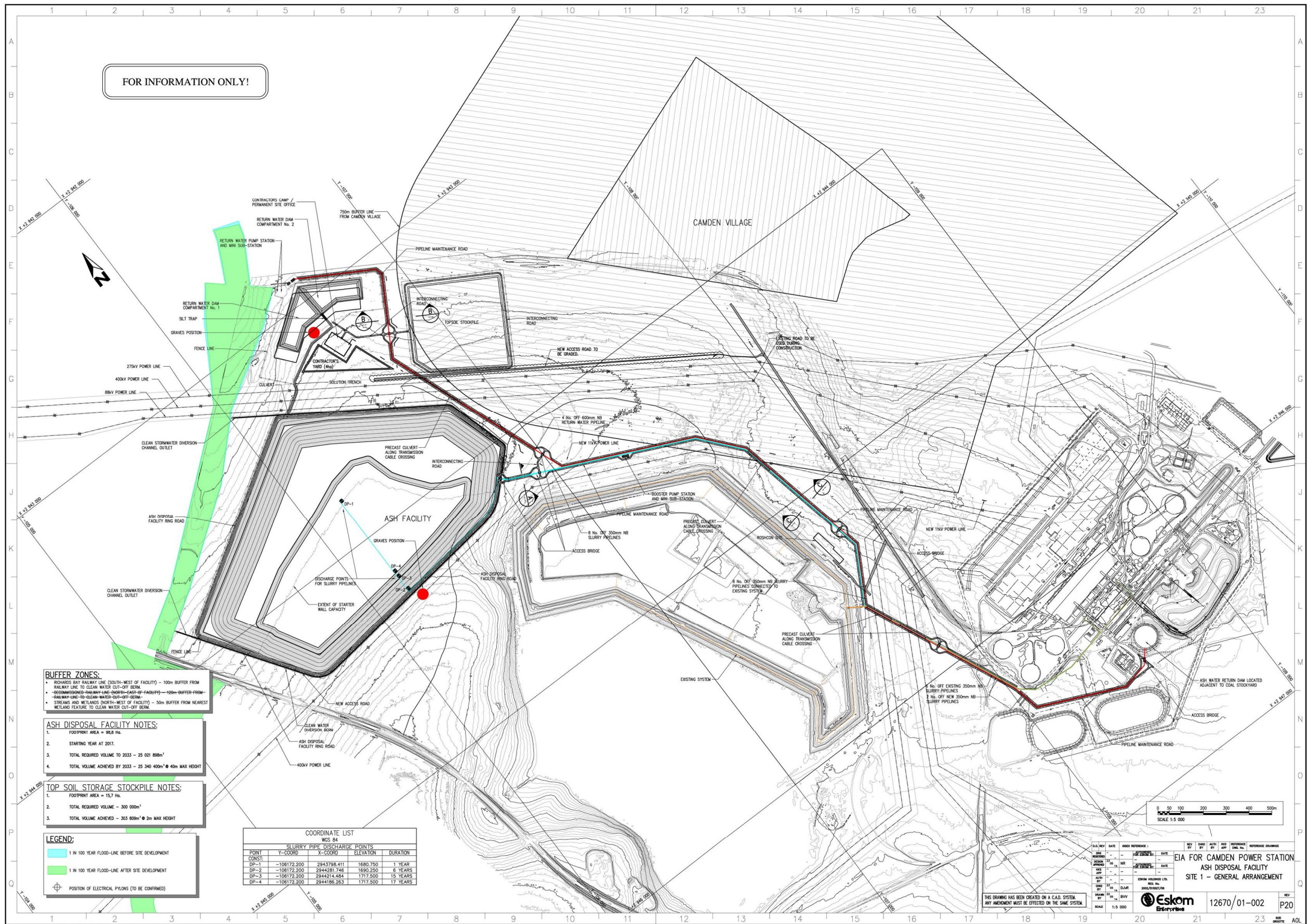


Figure 3. Location of gravesites shown on General Arrangement Plan

Gravesite 001

GPS Coordinates S26° 35' 40"
 E30° 04' 10"

This site has at least 11 graves and possibly up to 15 graves. Grave dressings consist of rocks packed in oval shapes or rectangles. Some graves are only outlined with rocks while others have complete stone cairns on top.

It is possible that the site contains more than the 11 clearly identified graves, since there are several irregular stone concentrations. These might have been more graves that have since eroded and the graves dressings shifted to make it more difficult to identify. It is also possible that these could represent infant graves, which were traditionally marked with less clearly defined graves dressings or with asymmetrical designs.



Figure 4. Photo of gravesite 001 showing a concentration of grave dressings to illustrate their orientation to each other



Figure 5. . Photo of gravesite 001 showing the shape and composition of individual dressings

Gravesite 002

GPS	Coordinates	S26° 36' 19"
		E30° 03' 59"

This is a burial site with two distinct graves indicated by stone cairns. The site is found within the power distribution line servitude.



Figure 6. Grave cairns at Gravesite 002

Management Recommendations

Table 1: Showing Significance Rating for graves/gravesites

Field Rating	Grade	Significance	Mitigation
National Significance (NS)	Grade 1	-	Conservation; National Heritage Site nomination
Provincial Significance (PS)	Grade 2	-	Conservation; Provincial Heritage Sites nomination
Local Significance (LS)	Grade 3A	High	Conservation; mitigation not advised



Heritage Management Consultants

Local Significance (LS)	Grade 3B	High	Mitigation with part of site retained in original
Generally Protected A (GP.A)	-	High/Medium	Mitigation before destruction
Generally Protected B (GP.B)	-	Medium	Recording before destruction
Generally Protected C (GP.C)	-	Low	Destruction

The two gravesites are classified as **Grade GP.A** sites. **Generally Protected A** sites which requires mitigation before destruction.

Impact Rating

IMPACT TABLE FORMAT		
Heritage component	<i>2 Gravesites</i>	
Issue/Impact/Heritage Impact/Nature	<i>Development of the Proposed Ash Disposal Facility, and associated infrastructure, at Camden Power Station</i>	
<i>Extent</i>	<i>Local (2)</i>	
<i>Probability</i>	<i>Definite (4)</i>	
<i>Reversibility</i>	<i>Irreversible (4)</i>	
<i>Irreplaceable loss of resources</i>	<i>Total loss of resources (5)</i>	
<i>Duration</i>	<i>Medium term (2)</i>	
<i>Cumulative effect</i>	<i>Negligible cumulative effect (1)</i>	
<i>Intensity/magnitude</i>	<i>Very high (4)</i>	
<i>Significance Rating of Potential Impact</i>	<i>72 points. The impact will have a high negative impact rating.</i>	
	Pre-mitigation impact rating	Post mitigation impact rating
Extent	2	2
Probability	4	1
Reversibility	4	1
Irreplaceable loss	5	1



Heritage Management Consultants

IMPACT TABLE FORMAT		
Duration	2	2
Cumulative effect	1	1
Intensity/magnitude	4	1
Significance rating	72 (high negative)	8 (low negative)
Mitigation measure	<i>It is recommended that the gravesites undergo an emergency relocation to a registered local community cemetery.</i>	

Management Recommendations

It is recommended that these gravesites (gravesites 001 & 002) undergo relocation to a community or municipal cemetery since their location will impact on safety and security, and will be impacted by the construction activities. By law access to burial sites may not be hindered by the developer. Next-of-kin would therefore need to have free access to the site regardless of the security arrangements of the landowner. Due to heavy industry activities on site the safety of such visitors would also be a serious concern. Taking into consideration the severity of possible negative impacts, the safety of the site and visitors, it is recommended that the most responsible approach would be to relocate these graves to a local cemetery. The design phase for the facility has been completed and it is anticipated that construction will commence sometime in January 2016. It is therefore essential that the necessary social consultation be commenced with as soon as possible. To further ensure the safety of the graves it is recommended that they be fenced off with a buffer zone of 25m. Any excavations nearer than 50 metres from the graves should be monitored by a suitably qualified heritage practitioner.

Vorster Street 38 A, Louis Trichardt, 0920, South Africa

PO Box 522, Louis Trichardt, 0920

Tel +27 15 516 1561 Cell +27 73 752 6583