

**HERITAGE IMPACT ASSESSMENT:  
PROPOSED PROSPECTING ON THE REMAINDER AND  
PORTIONS 3, 4, 5, 6, 7, 8 & 10 OF FARM EZELSFONTEIN  
214, NAMAKWALAND MAGISTERIAL DISTRICT,  
NORTHERN CAPE**

Required under Section 38(8) of the National Heritage Resources Act (No. 25 of 1999)  
as part of a Heritage Impact Assessment.

*Report for:*

**N.J. van Zyl**

P.O. Box 255, Springbok, 8240  
Email: klaaskraalbos@gmail.com

*On behalf of:*

**Orion Exploration No. 6 (Pty) Ltd**



**Dr Jayson Orton**

**ASHA Consulting (Pty) Ltd**

23 Dover Road, Muizenberg, 7945  
Tel: (021) 788 1025 | 083 272 3225  
Email: jayson@asha-consulting.co.za

6 July 2021

## SUMMARY

ASHA Consulting (Pty) Ltd was appointed by N.J. van Zyl to conduct an assessment of the potential impacts to heritage resources that might occur through proposed prospecting activities on the remainder and portions 3, 4, 5, 6, 7, 8 and 10 of the farm Ezelsfontein, in the Namakwaland Magisterial District. The centre of the study area is at about S29° 41' 20" E17° 42' 30".

The project involves various methods, the vast majority of which are of no concern to this study (e.g. desktop research, remote sensing, geological mapping). The only aspect that may cause physical damage to heritage resources is drilling. While reverse circulation drilling requires no clearing of the surface, core drilling would require a cleared area of 160 m<sup>2</sup> per hole. Drilling would occur through use of a truck-mounted drill rig in both scenarios.

The study area lies within the granite hills of the northernmost Kamiesberg, although an area of Nama sediments (sandstone, shale and limestone). The general area has been the site of many copper mining ventures since the mid-19<sup>th</sup> century, although none occur within the present study area. The mountains have much exposed granite (and other rocks in the central part of the study area), while the valleys tend to be filled with alluvium. Vegetation is sparse but denser than in areas further from the escarpment. Traces of earlier mining are abundant in the landscape but seem to be absent from the present study area. The R355 traverses the southern part of the study area and leads to the escarpment and down the Spektakel Pass which starts in the far western part of the study area.

The desktop research revealed that Stone Age resources appear to be very sparse. Traces of historical use of the landscape other than mining are known to occur widely throughout the local area and have been documented in various places. These traces relate to use of the landscape during the last two centuries since the establishment of mission stations in the area. Although not intrinsically significant, these resources reflect the living heritage of the area since they are the result of transhumant behaviour. Given the distance from the mission stations, the present study area may not host very many of these remains. Historical mining traces are usually the most important aspect of heritage encountered in the general area but they only occur in specific places on the landscape. These traces include historical excavations, ruins and built structures. There are also many traces of mid-late 20<sup>th</sup> century copper mining and, although part of the region's mining history, these do not constitute heritage resources. With the exception of two borrow pits along the R355, mining traces appear to be absent from the present study area. The R355 is considered a scenic route with the western part where it approaches and descends the Spektakel Pass being especially significant for the long views over the coastal plain. Because of the very sparse distribution of heritage resources and minimal visual impact of prospecting, it is concluded that impacts to such resources are likely to be minimal.

It is recommended that SAHRA allow the prospecting project to proceed as planned, but subject to the following recommendations:

- Once the drilling locations are known, a map should be provided to an archaeologist for desktop analysis. If any potentially sensitive areas cannot be avoided then a brief site visit should be carried out to confirm sensitivity and, in consultation with the prospecting geologists, propose alternative nearby drill sites. An opinion should then be expressed in a letter that should be submitted to SAHRA confirming whether or not drilling may proceed;

- Regardless of the above archaeological opinion, all drill sites should be carefully inspected by project staff to ensure that no heritage features are present;
- A fossil Chance Finds Procedure must be included in the project EMPr and implemented in the event of any chance finds of fossils, and
- If any archaeological material or human burials are uncovered during the course of development then work in the immediate area should be halted. The find would need to be reported to the heritage authorities and may require inspection by an archaeologist. Such heritage is the property of the state and may require excavation and curation in an approved institution.

## Glossary

**Background scatter:** Artefacts whose spatial position is conditioned more by natural forces than by human agency.

**Early Stone Age:** Period of the Stone Age extending approximately between 2 million and 200 000 years ago.

**Holocene:** The geological period spanning the last approximately 10-12 000 years.

**Hominid:** a group consisting of all modern and extinct great apes (i.e. gorillas, chimpanzees, orangutans and humans) and their ancestors.

**Later Stone Age:** Period of the Stone Age extending over the last approximately 20 000 years.

**Middle Stone Age:** Period of the Stone Age extending approximately between 200 000 and 20 000 years ago.

## Abbreviations

**APHP:** Association of Professional Heritage Practitioners

**ASAPA:** Association of Southern African Professional Archaeologists

**BA:** Basic Assessment

**CRM:** Cultural Resources Management

**DMR:** Department of Mineral Resources

**EA:** Environmental Authorisation

**ESA:** Early Stone Age

**GP:** General Protection

**GPS:** global positioning system

**HIA:** Heritage Impact Assessment

**LSA:** Later Stone Age

**MSA:** Middle Stone Age

**NBKB:** Ngwao-Boswa Ya Kapa Bokoni

**NEMA:** National Environmental Management Act (No. 107 of 1998)

**NHRA:** National Heritage Resources Act (No. 25) of 1999

**SAHRA:** South African Heritage Resources Agency

**SAHRIS:** South African Heritage Resources Information System

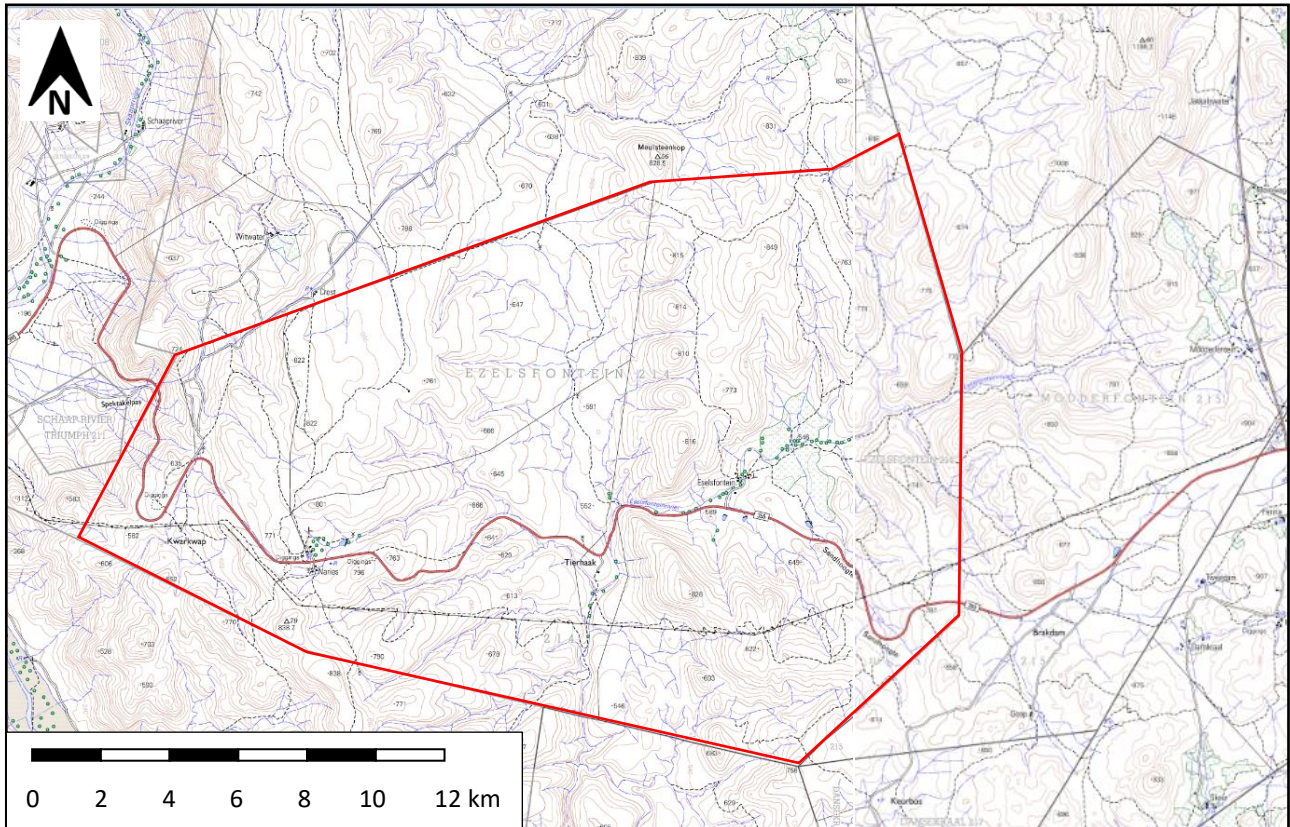
# Contents

Glossary.....	iv
Abbreviations .....	iv
<b>1. INTRODUCTION .....</b>	<b>1</b>
1.1. The proposed project .....	1
1.1.1. Project description .....	1
1.1.2. Identification of alternatives.....	3
1.1.3. Aspects of the project relevant to the heritage study.....	3
1.2. Terms of reference .....	3
1.3. Scope and purpose of the report .....	3
1.4. The author .....	4
1.5. Declaration of independence .....	4
<b>2. LEGISLATIVE CONTEXT .....</b>	<b>4</b>
2.1. National Heritage Resources Act (NHRA) No. 25 of 1999 .....	4
<b>3. METHODS.....</b>	<b>6</b>
3.1. Literature survey and information sources .....	6
3.2. Grading .....	6
3.3. Consultation.....	7
3.4. Assumptions and limitations .....	7
<b>4. PHYSICAL ENVIRONMENTAL CONTEXT .....</b>	<b>7</b>
4.1. Site context .....	7
4.2. Site description .....	7
<b>5. FINDINGS OF THE HERITAGE STUDY .....</b>	<b>9</b>
5.1. Palaeontology .....	9
5.2. Archaeology .....	11
5.2.1. Desktop study.....	11
5.3. Graves .....	13
5.4. Historical aspects and the Built environment .....	13
5.5. Cultural landscapes and scenic routes .....	16
5.6. Living heritage .....	17
5.7. Statement of significance and provisional grading .....	18
<b>6. ASSESSMENT OF IMPACTS .....</b>	<b>19</b>
6.1. Impacts to palaeontological resources.....	19
6.2. Impacts to archaeological and built heritage resources .....	20
6.3. The No-Go alternative .....	20
6.4. Existing impacts to heritage resources.....	21
6.5. Cumulative impacts .....	21
6.6. Levels of acceptable change .....	21
<b>7. INPUT TO THE ENVIRONMENTAL MANAGEMENT PROGRAM .....</b>	<b>21</b>
<b>8. EVALUATION OF IMPACTS RELATIVE TO SUSTAINABLE SOCIAL AND ECONOMIC BENEFITS.....</b>	<b>21</b>
<b>9. CONCLUSIONS .....</b>	<b>22</b>

9.1. Reasoned opinion of the specialist.....	22
<b>10. RECOMMENDATIONS .....</b>	<b>22</b>
<b>11. REFERENCES .....</b>	<b>23</b>
<b>APPENDIX 1 – Curriculum Vitae .....</b>	<b>26</b>
<b>APPENDIX 2 – Fossil Finds Procedure .....</b>	<b>28</b>

# 1. INTRODUCTION

ASHA Consulting (Pty) Ltd was appointed by N.J. van Zyl to conduct an assessment of the potential impacts to heritage resources that might occur through proposed prospecting activities on the remainder and portions 3, 4, 5, 6, 7, 8 and 10 of the farm Ezelsfontein in the Namakwaland Magisterial District (Figures 1 & 2). The centre of the study area is at about S29° 41' 20" E17° 42' 30".



**Figure 1:** Extract from 1:50 000 topographic mapsheets 2917DB & 2918CA showing the location of the site (green polygon). Source of basemap: Chief Directorate: National Geo-Spatial Information. Website: [www.ngi.gov.za](http://www.ngi.gov.za).

## 1.1. The proposed project

### 1.1.1. Project description

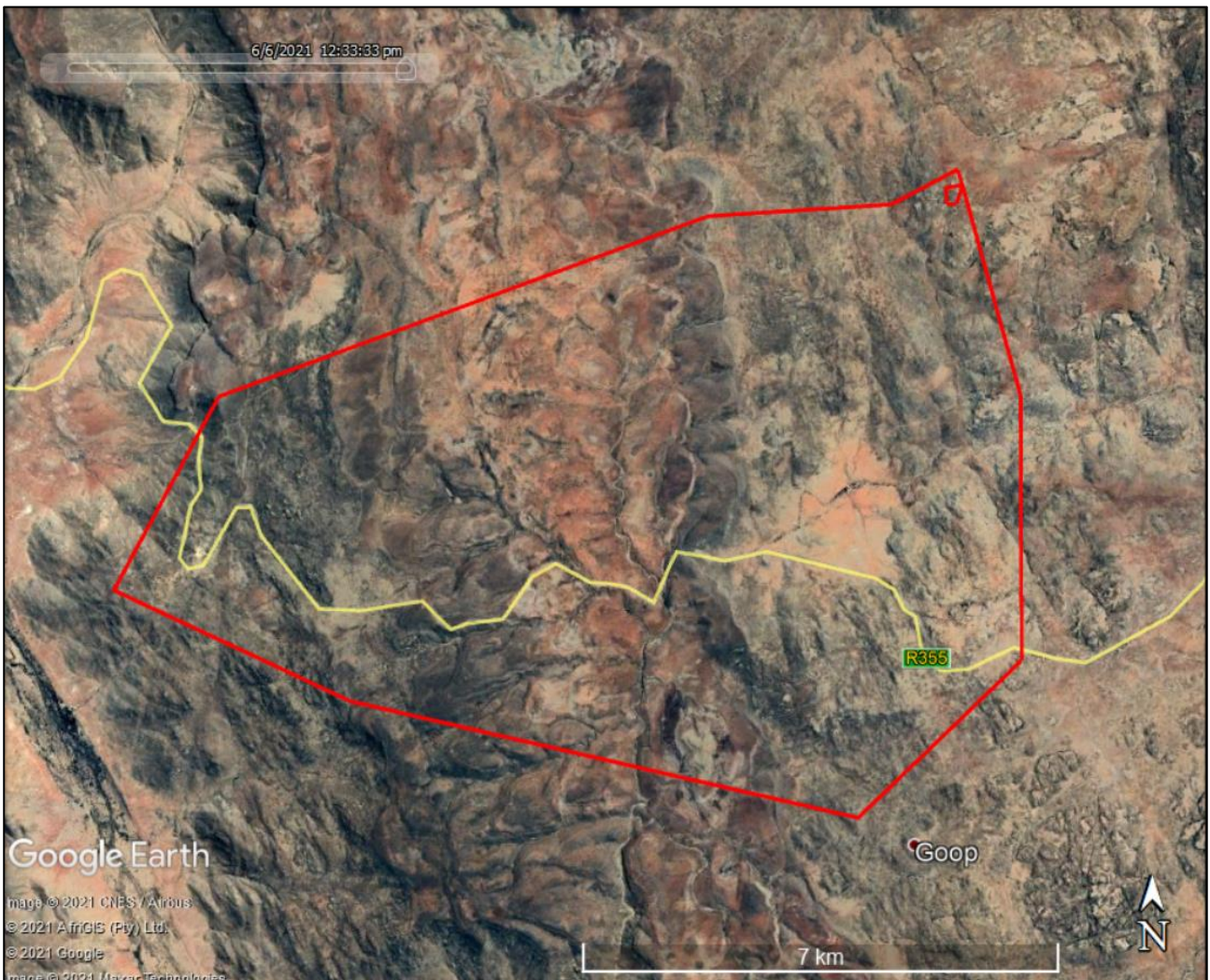
The application (DMRE ref no.: NC30/5/1/1/2/12852PR) involves prospecting for copper, tungsten and a wide variety of other minerals. The prospecting work will occur in three phases and will include the following tasks:

Proposed prospecting methods (see section 6 for detailed description of these methods)

- (a) Desktop study work and assessment of historical data
- (b) Geological field mapping (optional)
- (c) Geophysics
- (d) Soil Sampling programmes (optional)
- (e) Initial Diamond core (or reverse-circulation) drilling to identify the presence of mineralisation

- (f) Consolidation and interpretation of data; possible geological modelling
- (g) Resource Diamond (or reverser-circulation) drilling (if warranted; Figure 3)
- (h) Mineral Resource estimation (if warranted)
- (i) Pre-feasibility studies (if warranted)
- (j) Rehabilitation programmes
- (k) Closure if warranted
- (l) Mineral right, environmental and legal work and reporting
- (m) Raising of finance and associated reporting

A laydown and storage area may be required (only for core drilling) but no other infrastructure, accommodation, etc will be developed as part of this prospecting project and no processing plant or other related services will need to be developed. Existing roads and tracks will be used as far as possible but from time to time the drilling rig will need to cross undisturbed ground to reach drill sites. Reverse circulation drilling does not require the ground to be cleared, but core drilling will require a clear area of 160 m<sup>2</sup>. All damaged areas will be rehabilitated after drilling.



**Figure 2:** Aerial view of the study area (red polygon).





**Figure 3:** Example of the type of drilling rig to be used.

#### 1.1.2. Identification of alternatives

There are no alternatives for this project. The project location, technology and layouts are all suited to the prospecting as proposed and no feasible alternatives exist. As such, this assessment proceeds on the basis of a preferred alternative and the No-Go alternative only.

#### 1.1.3. Aspects of the project relevant to the heritage study

The only aspect of concern to this study is the drilling stage. Other samples will be too small to be of concern and will not result in significant impacts. However, the drilling will require bringing a drilling rig onto the site and this could result in damage to heritage resources, especially archaeological resources that are not readily identifiable by lay people.

### 1.2. Terms of reference

ASHA Consulting was asked to compile a heritage impact assessment (HIA) that assessed all relevant heritage resources and made recommendations to minimise impacts to such resources during implementation of the project. Because physical intervention sites for drilling cannot be identified until after the project has commenced, the work was to be done from the desktop.

### 1.3. Scope and purpose of the report

An HIA is a means of identifying any significant heritage resources before development begins so that these can be managed in such a way as to allow the development to proceed (if appropriate) without undue impacts to the fragile heritage of South Africa. This HIA report aims to fulfil the requirements of the heritage authorities such that a comment can be issued by them for consideration by the Department of Mineral Resources and Energy (DMRE) who will review the Basic Assessment (BA) and grant or refuse authorisation. The HIA report will outline any management and/or mitigation requirements that will need to be complied with from a heritage point of view and that should be included in the conditions of authorisation should this be granted.

## 1.4. The author

Dr Jayson Orton has an MA (UCT, 2004) and a D.Phil (Oxford, UK, 2013), both in archaeology, and has been conducting Heritage Impact Assessments and archaeological specialist studies in South Africa (primarily in the Western Cape and Northern Cape provinces) since 2004 (please see curriculum vitae included as Appendix 1). He has also conducted research on aspects of the Later Stone Age in these provinces and published widely on the topic. He is an accredited heritage practitioner with the Association of Professional Heritage Practitioners (APHP; Member #43) and also holds archaeological accreditation with the Association of Southern African Professional Archaeologists (ASAPA) CRM section (Member #233) as follows:

- Principal Investigator: Stone Age, Shell Middens & Grave Relocation; and
- Field Director: Colonial Period & Rock Art.

## 1.5. Declaration of independence

ASHA Consulting (Pty) Ltd and its consultants have no financial or other interest in the proposed development and will derive no benefits other than fair remuneration for consulting services provided.

# 2. LEGISLATIVE CONTEXT

## 2.1. National Heritage Resources Act (NHRA) No. 25 of 1999

The NHRA protects a variety of heritage resources as follows:

- Section 34: structures older than 60 years;
- Section 35: prehistoric and historical material (including ruins) more than 100 years old as well as military remains more than 75 years old, palaeontological material and meteorites;
- Section 36: graves and human remains older than 60 years and located outside of a formal cemetery administered by a local authority; and
- Section 37: public monuments and memorials.

Following Section 2, the definitions applicable to the above protections are as follows:

- Structures: “any building, works, device or other facility made by people and which is fixed to land, and includes any fixtures, fittings and equipment associated therewith”;
- Palaeontological material: “any fossilised remains or fossil trace of animals or plants which lived in the geological past, other than fossil fuels or fossiliferous rock intended for industrial use, and any site which contains such fossilised remains or trace”;
- Archaeological material: a) “material remains resulting from human activity which are in a state of disuse and are in or on land and which are older than 100 years, including artefacts, human and hominid remains and artificial features and structures”; b) “rock art, being any form of painting, engraving or other graphic representation on a fixed rock surface or loose rock or stone, which was executed by human agency and which is older than 100 years, including any area within 10m of such representation”; c) “wrecks, being any vessel or aircraft, or any part thereof, which was wrecked in South Africa, whether on land, in the internal waters, the territorial waters or in the maritime culture zone of the Republic, as

defined respectively in sections 3, 4 and 6 of the Maritime Zones Act, 1994 (Act No. 15 of 1994), and any cargo, debris or artefacts found or associated therewith, which is older than 60 years or which SAHRA considers to be worthy of conservation”; and d) “features, structures and artefacts associated with military history which are older than 75 years and the sites on which they are found”;

- Grave: “means a place of interment and includes the contents, headstone or other marker of such a place and any other structure on or associated with such place”; and
- Public monuments and memorials: “all monuments and memorials a) “erected on land belonging to any branch of central, provincial or local government, or on land belonging to any organisation funded by or established in terms of the legislation of such a branch of government”; or b) “which were paid for by public subscription, government funds, or a public-spirited or military organisation, and are on land belonging to any private individual.”

Section 3(3) describes the types of cultural significance that a place or object might have in order to be considered part of the national estate. These are as follows:

- a) its importance in the community, or pattern of South Africa’s history;
- b) its possession of uncommon, rare or endangered aspects of South Africa’s natural or cultural heritage;
- c) its potential to yield information that will contribute to an understanding of South Africa’s natural or cultural heritage;
- d) its importance in demonstrating the principal characteristics of a particular class of South Africa’s natural or cultural places or objects;
- e) its importance in exhibiting particular aesthetic characteristics valued by a community or cultural group;
- f) its importance in demonstrating a high degree of creative or technical achievement at a particular period;
- g) its strong or special association with a particular community or cultural group for social, cultural or spiritual reasons;
- h) its strong or special association with the life or work of a person, group or organisation of importance in the history of South Africa; and
- i) sites of significance relating to the history of slavery in South Africa.

While landscapes with cultural significance do not have a dedicated Section in the NHRA, they are protected under the definition of the National Estate (Section 3). Section 3(2)(c) and (d) list “historical settlements and townscapes” and “landscapes and natural features of cultural significance” as part of the National Estate. Furthermore, some of the points in Section 3(3) speak directly to cultural landscapes.

Section 38(8) of the NHRA states that if an impact assessment is required under any legislation other than the NHRA then it must include a heritage component that satisfies the requirements of S.38(3). Furthermore, the comments of the relevant heritage authority must be sought and considered by the consenting authority prior to the issuing of a decision. Under the National Environmental Management Act (No. 107 of 1998; NEMA), as amended, the project is subject to an EIA OR BA. The present report provides the heritage component. Ngwao-Boswa Ya Kapa Bokoni (Heritage Northern Cape; for built environment and cultural landscapes) and the South African Heritage Resources Agency (SAHRA for archaeology and palaeontology) are required to provide comment on the proposed project in order to facilitate final decision making by the DMRE.

### 3. METHODS

#### 3.1. Literature survey and information sources

A survey of available literature was carried out to assess the general heritage context into which the development would be set. Dr Lita Webley was commissioned to assist with this aspect. The information sources used in this report are presented in Table 1.

*Table 1: Information sources used in this assessment.*

Data / Information	Source	Date	Type	Description
Maps	Chief Directorate: National Geo-Spatial Information	Various	Spatial	Historical and current 1:50 000 topographic maps of the study area and immediate surrounds
Aerial photographs	Chief Directorate: National Geo-Spatial Information	Various	Spatial	Historical aerial photography of the study area and immediate surrounds
Aerial photographs	Google Earth	Various	Spatial	Recent and historical aerial photography of the study area and immediate surrounds
Cadastral data	Chief Directorate: National Geo-Spatial Information	Various	Survey diagrams	Historical and current survey diagrams, property survey and registration dates
Background data	South African Heritage Resources Information System (SAHRIS)	Various	Reports	Previous impact assessments for any developments in the vicinity of the study area
Palaeontological sensitivity	South African Heritage Resources Information System (SAHRIS)	Current	Spatial	Map showing palaeontological sensitivity and required actions based on the sensitivity.
Background data	Books, journals, websites	Various	Books, journals, websites	Historical and current literature describing the study area and any relevant aspects of cultural heritage.

#### 3.2. Grading

S.7(1) of the NHRA provides for the grading of heritage resources into those of National (Grade I), Provincial (Grade II) and Local (Grade III) significance. Grading is intended to allow for the identification of the appropriate level of management for any given heritage resource. Grade I and II resources are intended to be managed by the national and provincial heritage resources authorities respectively, while Grade III resources would be managed by the relevant local planning authority. These bodies are responsible for grading, but anyone may make recommendations for grading.

It is intended under S.7(2) that the various provincial authorities formulate a system for the further detailed grading of heritage resources of local significance but this is generally yet to happen. SAHRA (2007) has formulated its own system<sup>1</sup> for use in provinces where it has commenting authority. In

<sup>1</sup> The system is intended for use on archaeological and palaeontological sites only.

this system sites of high local significance are given Grade IIIA (with the implication that the site should be preserved in its entirety) and Grade IIIB (with the implication that part of the site could be mitigated and part preserved as appropriate) while sites of lesser significance are referred to as having 'General Protection' (GP) and rated as GP A (high/medium significance, requires mitigation), GP B (medium significance, requires recording) or GP C (low significance, requires no further action).

### **3.3. Consultation**

The NHRA requires consultation as part of an HIA but, since the present study falls within the context of a Basic Assessment (BA) which includes a public participation process (PPP), no dedicated consultation was undertaken as part of the HIA. Interested and affected parties would have the opportunity to provide comment on the heritage aspects of the project during the PPP.

### **3.4. Assumptions and limitations**

The study was carried out from the desktop. This was because the locations of drill sites have yet to be determined which means that a ground survey cannot yet be planned. While this is a restriction in terms of the locations of actual heritage resources that might be present, enough work has been done in the general area to allow an appraisal of the types of heritage to be expected on site, and for appropriate recommendations to be formulated.

## **4. PHYSICAL ENVIRONMENTAL CONTEXT**

### **4.1. Site context**

The study area lies well to the west of the N7 and straddles the R355 which links Springbok and Kleinsee via the Spektakel Pass. The Pass lies at the western end of the study area, partly within and partly outside of the study area. Much of the study area is a natural environment. The region in general is well known for its copper mines but, although traces of mining are widely visible on aerial photography to the east, none appear to be visible within the present study area. Two borrow pits lie near the top of the Spetakel Pass though. Nababeep and Springbok lie to the northeast and east of the study area, while Buffelsrivier lies to the west.

### **4.2. Site description**

The site lies in the far north of the Kamiesberg Mountains of Namaqualand. The mountains are granite and are characterised by plenty of exposed rock. Between the hills the land tends to form relatively flat fine gravel/sandy plains. The far western edge of the study area just reaches over the edge of the escarpment and vegetation is somewhat denser in this area than further inland because of the mist that pushes across the coastal plain fairly regularly. A number of quite well-incised river valleys converge in the centre of the study area and flow out of its southern margin. Figures 4 to 7 show examples of the landscape as seen from the R355 which runs east to west through the study area.



**Figure 4:** View towards the east from the R355 near the top of the Spetakel Pass in the western end of the study area.



**Figure 5:** View towards the north from the R355 in the central part of the study area.



**Figure 6:** View towards the west along the R355 in the central part of the study area and showing a short poort through which the road runs.



**Figure 7:** View towards the west from the R355 in the eastern part of the study area and showing a wide sandy valley.

## 5. FINDINGS OF THE HERITAGE STUDY

This section describes the heritage resources recorded in the study area during the course of the project.

### 5.1. Palaeontology

The SAHRIS Palaeosensitivity map shows the general area to be of largely zero palaeontological sensitivity (Figure 8). This is because it is underlain by “granites and gneisses of the Namaqua Metamorphic Province that are between one and two billion years old and do not contain fossils” (Almond & Pether 2009). However, valley fills in between the granite hills can contain rare fossils and these zones are rated as being of low palaeontological sensitivity (Figure 7). Dr John Almond (2019:3) has recently considered these valley fills and plains deposits for a project across the N7 from the present study area and had the following to say:

The overall palaeontological sensitivity of the sandy to gravelly, and locally calcretised, Late Caenozoic superficial deposits in the Namaqualand region is generally low. The predominantly porous, sandy superficial deposits in the study area, including the alluvial and aeolian sands and gravels, are unlikely to contain substantial fossil remains (De Beer et al., 2002, Almond & Pether 2008, Almond in Macey et al. 2008). Fossil land snails have been recorded from yellowish to reddish terrestrial sands and overlying calcretes in the Springbok sheet area (Marais et al., 2001, p70). Among the limited range of other fossils that might be encountered within Late Caenozoic surface sediments in the study area are calcretized rhizoliths (root casts), termitaria and other burrows, freshwater molluscs, ostrich egg shells, sparse bones, teeth and horn cores of mammals, and tortoise remains. Finer-grained river, stream and pan sediments might contain fossils of fish, frogs, molluscs, crustaceans (crabs, ostracods, phyllo pods such as conchostracans) as well as microfossils such as diatoms, palynomorphs and macroplant remains (e.g. wood, peats). Such fossil remains are likely to occur only sporadically.

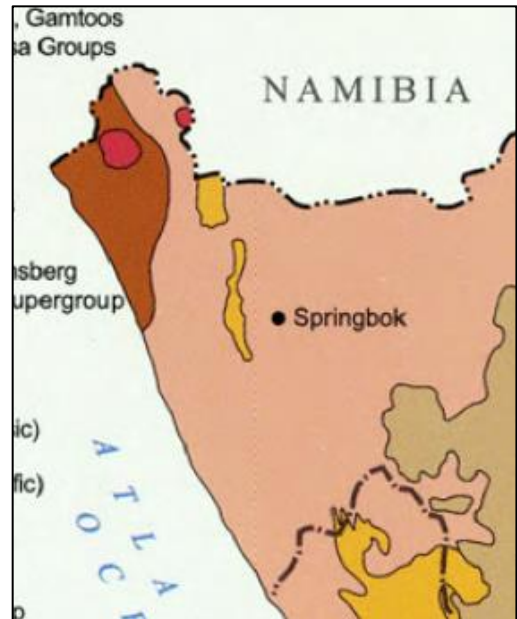
Bamford (2018:8) has recently considered an area just to the southwest of the present study area and stated that “quaternary alluvial sands do not preserve fossils because of their friable and transported nature.” Although the two authors provide variable comments, it is clear that the sensitivity of these sand and fine gravel deposits is low with a very minimal chance of locating any fossils.

However, in contrast to other parts of the Kamiesberg Mountains, there is a band marked as unknown sensitivity that runs north to south through the centre of the study area (Figure 9). This band is comprised of the Nama Group sediments which are sub-horizontal sandstones, shales and limestone. Almond and Pether (2009) rate this area as being of very high sensitivity and describe the geology as siliciclastic and carbonate sediments, largely undeformed and with very low grade metamorphism. According to Almond (pers. comm. 2021) and as per the geological map of the area (Figure 10), the sediments in this area are likely to all be from the Kuibis Subgroup.

The Kuibis Subgroup is described as “shallow marine to braided fluvial siliciclastic sediments (Dabis Fm) and shallow marine to coastal limestones siliciclastics (Zaris Formation)” with the potential fossils described as “Primitive shells (*Cloudina*, *Namacalathus*), conical stromatolites (*Conophyton*) in limestones, cyanobacterial mat wrinkle structures (*Arumberia* etc) in intertidal quartzites.” They note that some of the earliest shelly invertebrates in the world can be found here.

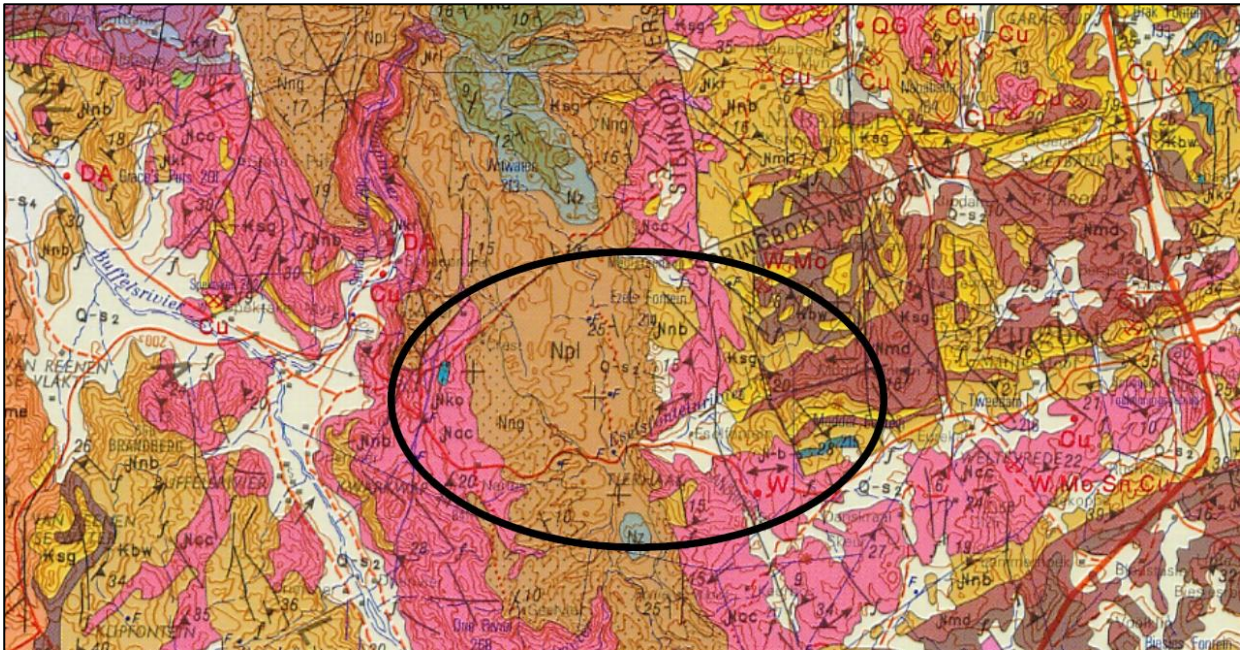


**Figure 8:** Extract from the SAHRIS Palaeosensitivity map showing the study area to be of low (blue shading) and zero (grey shading) palaeontological sensitivity.



**Figure 9:** Extract from the geology map in Almond & Pether (2009:10) showing the strip of Nama sediments (yellow) west of Springbok.





**Figure 10:** Geological map showing the sediments of palaeontological concern. Npl, Nng (both light brown) and Nz (grey/blue) are the Kuibis Formation sediments.

## 5.2. Archaeology

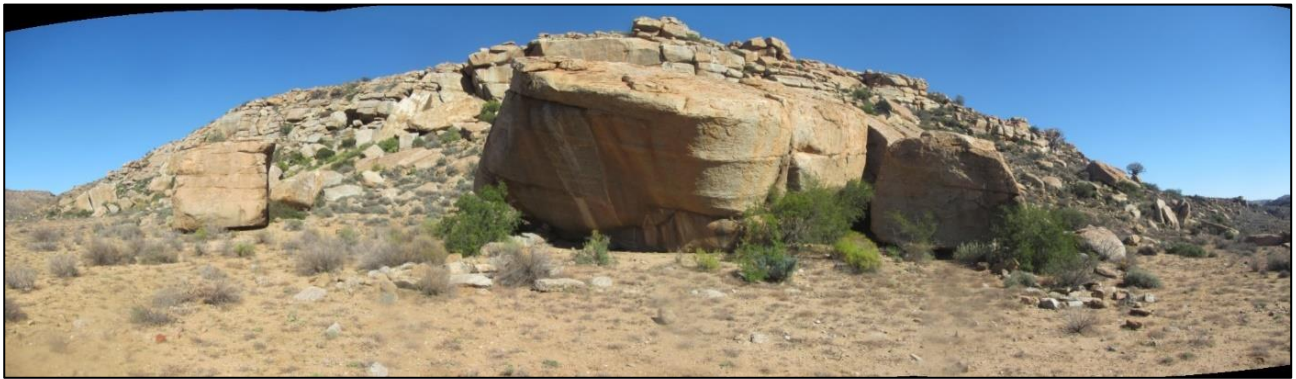
### 5.2.1. Desktop study

Archaeological research in Namaqualand has been focussed on the coast (Dewar 2007; Orton 2012), the Kamiesberg mountains (Webley 1992) and the Richtersveld, especially along the Orange River (Orton & Halkett 2010; Robertshaw 1978; Webley 1992). Archaeological occurrences in some areas have been rich and varied (Morris 2018) and include material from the Early (ESA), Middle (MSA) and Late Stone Ages (LSA), the latter being more common. While some chronological frameworks have been developed for certain areas, as Kaplan (2016) points out, there have been no academic studies in the Springbok area. There have, however, been a number of CRM studies which form the basis of the review below.

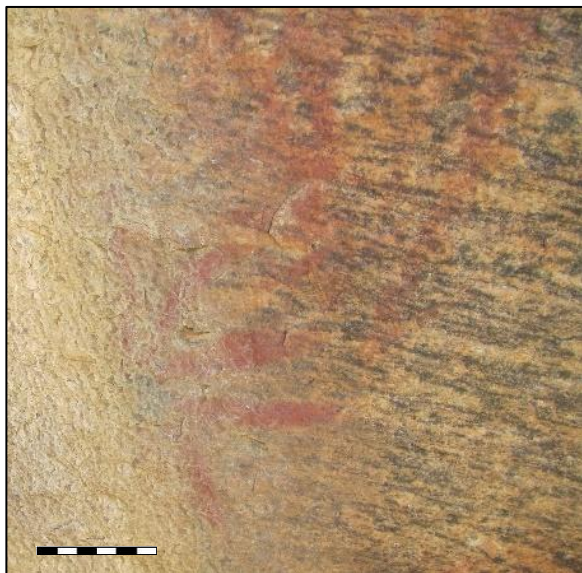
Isolated artefacts or very low density background scatters from the ESA, MSA and LSA have been reported from various areas (e.g. Kaplan 2016; Morris 2018; Smith 2013). They tend to occur on the sandy sediments of the valleys and plains and not on the rocky hills which are largely devoid of Stone Age archaeological traces. LSA sites and occurrences are the most predominant significant pre-colonial heritage resources noted in surveys in the area. They are nevertheless sparsely distributed and tend to be concentrated on water sources and where some possibilities of shelter occur. Pans, springs, rock shelters and in the lee of koppies and boulders are likely locations.

Kaplan (2010) surveyed an area between Okiep and Carolusberg noting some diagnostic quartzite flakes and a rock shelter with faded rock art and some artefacts. The rock art site has been revisited by the present author with many more details being recorded. The site lies beneath the overhanging east face of a large boulder at the foot of a granite hill (Figure 11). The wall of the boulder has several geometric finger paintings on it (Figures 12 & 13) and a low stone wall has been constructed around the floor of the shelter. Some of the rocks have been used as lower grindstones and there is an extensive assemblage of stone artefacts and other materials, including a few historical items, both within and outside of the walling (Orton, own data). This site lies 20 km away to the northeast of

the study area. Rock art is rare in Namaqualand but the nearest site on record lies some 12 km to the south of the study area. It was recorded by Rudner and Rudner (1968) but no precise location was given.



**Figure 11:** A site with geometric rock art, stone walling and many artefacts.



**Figure 12:** Geometric rock art. Scale in cm.



**Figure 13:** Geometric rock art. Scale in cm.

Historic accounts refer to the Little Namaqua Khoekhoen, a pastoralist group who were spread out across the Namaqualand landscape in the 19<sup>th</sup> century but who seem to have been concentrated in the Kamiesberg and along the Orange River. Research into pastoralist archaeology has recorded evidence for early sheep and cattle bones from the Namaqualand coastal areas. If any significant pastoralist sites are identified in the Springbok area, this would provide the potential to contribute to our understanding of the origins and spread of the Khoekhoen into southern Africa. The geometric rock art site reported above, may be one such site, since geometric art has been linked by several authors to the Khoekhoen (Eastwood & Smith 2005; Smith & Ouzman 2004; Van Rijssen 1994).

The historical remains of 19<sup>th</sup> and early 20<sup>th</sup> century occupation are also regularly found in the area and these include stone-walled kraals, threshing floors and foundations of houses (Gaigher 2012; Kaplan 2010; Orton 2018, 2019; Smith 2013). Light scatters of historical artefacts – glass, ceramics,

metal and other items – also occur from time to time, perhaps indicating the slightly older settlements. This aspect is discussed further in Section 5.6.

### 5.3. Graves

Most graves are likely to occur within formal graveyards and such sites would not be harmed during prospecting. However, there are two possible aspects of concern. The first is that historical graves from the last approximately 200 years can be present singly or in small clusters related to stockposts and farmsteads. These graves will almost always be identifiable at the surface through the presence of stone-packed mounds and/or head and footstones. The second aspect is the possibility of unmarked precolonial burials being present. Such graves are not readily identified because grave markings such as lower grindstones are generally placed below the ground surface. Their locations can never be predicted and they can only be dealt with at the time of discovery. Such finds are expected to be extremely unlikely though.

Aerial photography shows what looks like a farm graveyard located just west of the farmstead near the top of the Spektakel Pass at S29° 42' 4.45" E17° 39' 44.11".

### 5.4. Historical aspects and the Built environment

#### COPPER MINING

Given that the present project deals with prospecting for copper, the history of early copper mining in the region is highly relevant. In 1682, some Namaqua Khoekhoen visited the Fort of Good Hope with some pieces of copper that the Commander, Simon van der Stel, thought to be of good quality and he presumed that it was abundant in their country although it appeared that they did not know how to refine it.

In 1685, the Commander of the Garrison at the Fort of Good Hope, Simon van der Stel, set out with a party of men in search of the source of the copper. After reaching the Koperberge (Copper Mountains), his men set about sinking three shafts into the mountains, extracting some copper ore. He also visited the vicinity of Okiep. Despite the optimism of the foreman miner regarding the quality and quantity of the ore, the samples sent to the Netherlands for assay were found to be low-grade. This, together with the distance from the Cape, the difficulty of transporting the ore to the coast, and the difficulty of processing it locally due to a lack of fuel and water, resulted in the venture being abandoned.

It was another 180 years after van der Stel's visit, before copper mining commenced in earnest in Namaqualand.

The first company to be registered was *South African Mining Company* formed by Thomas Fannin in 1846 but it did not find viable deposits in the Richtersveld and Fannin sold out his interest in 1847, but not before the Colonial Government had annexed the land between the Buffalo River and Orange River taking place in December 1847. By 1854, between 200 to 300 mining leases had been issued by the Government for the copper mines but it was Phillips and King who had the rights to Brakfontein, Melkboschkuil and Lelyke Pad (Nababeesp). The first registered owner of Nababeesp was Pieter Van Zyl in 1850. He referred to it as Lelike (Lelyke in Dutch) Pad alias Nababeeb – only in 1863 was the beeb changed to a beep. The original name referred to the poor condition of the road

through the farm (Burger 1986: 448). The survey diagram for the farm shows a public road running from south to north through the farm and a public outspan along this road about 2 km southeast of the town of Nababeep. By 1855 the copper mining bubble had burst but the mines of Phillips and King remained profitable. Phillips and King sold their company and assets to the *Cape of Good Hope Copper Mining Company Ltd* in 1862.

Nababeep was purchased by Phillips & King in 1852. By 1857, it was reported that three openings had been made and copper extracted from the western end (Smalberger 1975: 94). There is conflicting information on this, as the centenary booklet on Namaqualand Copper noted that the grade was low, and it was only in 1883, that mining began in earnest (Okiep Copper Company 1952). The period 1888-1927, under the Cape Copper Company, is considered the height of operations. Smalberger (1975) claims that work was rather spasmodic, and various trial excavations were being undertaken up until 1899. By 1902, it was finally recognised as the second most important producing mine of the Cape Copper Company.

The lease to mine at Spektakel, was granted to Phillips and King in 1853 and work commenced the following year. Three pits had been sunk by 1856 and by 1863, Spektakel was the largest village in Namaqualand. A mission school was established in 1869 but Smalberger (1975) notes that no systematic work had been done although a large, cavernous excavation had been made into the side of the hill (Figure 14). Although the village contained about 470 inhabitants, there were only 13 houses but 67 huts and tents. Many of the mine workers came from the mission of Komaggas. The mine closed shortly after 1901 and it was noted that the stone houses had fallen into ruin. The Cape and the Namaqua Copper Companies closed down in 1919 and 1931 respectively. The Newmont Mining Company from the U.S.A. formed the O'okiep Copper Company in 1937 and acquired all the assets of the two earlier companies. Copper production began again in 1940 at the O'okiep, Nababeep and Narrap Mines and a further 20 mines were opened. All mining ceased in 2002 with Nigramoep Mine (located to the northwest of the study area) being the last to close (Clifford & Barton 2012).

The historic copper railway is also a key part of local mining history but the railway did not reach into the present study area so it is not discussed further here.



**Figure 14:** Spektakel Mine in 1880. Source: Jowell & Folb (2004:13).

### PROVINCIAL HERITAGE SITES

There are four Provincial Heritage Sites (PHSs) in the area. These all relate to historic copper mining and are as follows (Figure 15):

- The copper smelting chimney at Springbok;
- The smoke stack at Okiep;
- The Cornish Beam pump at Okiep; and
- Simon van der Stel's original 17<sup>th</sup> century mine at Carolusberg.

The nearest is at Springbok some 12 km east of the study area. None are thus of any concern to the present application.



**Figure 15:** Provincial heritage sites related to copper mining in the region. Top left: smelting furnace at Springbok. Top right: Smoke stack with Cornish Beam Pump in the background at Okiep. Bottom: Simon van der Stel mine with mining symbol.

### ANGLO-BOER WAR

While the Anglo-Boer War is an important part of the region's history, all the relevant activity occurred around Springbok and Okiep. There are no known ABW features in the vicinity of the study area and this aspect is thus not described further.

### **5.5. Cultural landscapes and scenic routes**

There are three aspects of concern in terms of cultural landscapes. The first aspect of the cultural landscape is the archaeological one. It is expected that the area will contain many archaeological and more recent (i.e. <100 years old) features related to the historical occupation of the area by local herders and their ancestors. Such features were documented by Morris and Henderson (2018) in the Nababeep mining area they assessed, and also by Orton's (2019) recent survey of areas around Concordia. Although many of these features are less than 100 years of age and thus not legally archaeological, they all tell a similar story that extends back to the early 19<sup>th</sup> century when, owing to the influence of the missionaries, the Namakwa started to settle for longer periods close to the mission stations. They started to grow crops and to build stone structures and the landscape became far more marked by their presence than had been the case during precolonial times when the Namakwa were fully transhumant and left only very ephemeral traces of their passing. This

cultural landscape is tied directly to living heritage which is addressed in Section 5.6. Given the distance from the local towns, it is expected that such materials will be relatively infrequent in the study area.

The second aspect is the mining landscape. At the scale of individual mines this landscape can appear 'messy' and a detraction from the natural beauty of the region. This is because of the unsightly mine dumps present around the mines. The large mine dumps around Nababeep and Okiep are obvious examples (see mine dumps to the north of these towns in Figure 11). Granite mining also occurs in the area but no such mines are visible on aerial photography in the present study area. However, some copper mine dumps and some of the associated structures where these occur are all part of another historical landscape related to early copper mining in the area. This early copper mining landscape was for a number of years on the tentative list for declaration as a World Heritage Site. The declaration was never carried through, but four separate PHSs related to this copper mining landscape do exist in the wider area as noted above. Also an important part of this landscape is the historic copper railway which is represented only by its supporting berm and various related built features as noted above.

Proposed for PHS declaration, but never carried through, is the well-known Blue Mine in Springbok which was the first commercial copper mine in South Africa. It was opened in 1852 by Philips and King, a company based in Cape Town (Cairncross 2004).

The third component of the cultural landscape is the natural landscape that has scenic beauty and, during flower season, great tourism value to the surrounding area. Namaqualand is very well-known for its natural beauty and in this regard the N7 is seen as an important scenic route. Springbok and Okiep, both of which lie along the N7, are major destinations during the flower season. The study area is off this route, but people certainly do travel the minor roads of the region in search of spring flowers. The dry plains and rocky mountains with their granite domes create a primeval landscape with considerable aesthetic qualities. Furthermore, the R355 can certainly be regarded as a scenic route, especially as it approaches and descends the Spektakel Pass in the western end of the study area from where long views over the coastal plain can be obtained.

## **5.6. Living heritage**

There is a direct historical link between the small stock farmers in the Steinkopf, Concordia and Richtersveld Communal Lands and the Namaqua Khoekhoen who were encountered by early travellers in the 17th century. Many of the residents of the Concordia, Steinkopf and Richtersveld Communal Reserves are descended from these Nama-speaking pastoralists who at one time practised a transhumant lifestyle across most of Namaqualand. The Trekboer encroachment into the region from the mid-18th century resulted in the Namaqua losing access to their traditional grazing lands and they eventually gravitated towards the mission stations that were established at Leliefontein, Steinkopf, Komaggas, Concordia and in the Richtersveld during the 19th century. Residents were granted a "Ticket of Occupation" in the mid-19th century and the Mission Stations and Communal Reserves Act of 1909 placed the communal land under government control.

The mission stations provided a form of social support for the Namaqua, but the establishment of schools and churches in the reserves meant that the inhabitants started practicing a more limited transhumant cycle using the villages as one permanent point in their seasonal cycle. Steinkopf

residents were still practicing a limited form of transhumance in 1986 (Webley 2009) but many of the old stockposts have now become semi-permanent settlements.

Stockpost locations are typically situated next to a rocky hill or koppie, where the rock provides some shelter from the elements. Stockposts often have one or more kraals nowadays often enclosed by wire fences, whereas in the past they were constructed of stone. In the past the inhabitants would stay in Matjies houses made of a lathe framework covered in rush mats, an architectural tradition that dates back to at least the 17th century and was first documented in the illustrations of early travellers to the Cape. However, these have now been supplanted with corrugated iron houses. Food is often cooked in a separate shelter near the Matjieshuis, known as a “kookskerm”. Other associated elements at the stockpost may include an outside oven made of stone and clay, and a threshing floor (“trapvloer”) for threshing of wheat. There is a great deal of similarity between stockposts found in Steinkopf, Concordia and the Richtersveld. They are a tangible example of a rapidly disappearing pastoralist way of life in the communal lands of Namaqualand and a very good example of “living heritage” as defined in the NHRA. The continuation of traditional practices, for example the outdoor cooking shelters sometimes seen outside houses and the rock and earth ovens, shows that, although life has changed considerably for the local populations, their living heritage remains alive in the area.

Many features related to this living heritage, such as kraals, house floors, threshing floors and other related features have been recorded in the general area, though these are most frequently located in surveys closer to the historical mission stations (Section 5.2.2). Such features are likely to be less common in the study area than, for example, in areas close to or east of the N7.

## **5.7. Statement of significance and provisional grading**

Section 38(3)(b) of the NHRA requires an assessment of the significance of all heritage resources. In terms of Section 2(vi), “cultural significance” means aesthetic, architectural, historical, scientific, social, spiritual, linguistic or technological value or significance. The reasons that a place may have cultural significance are outlined Section 3(3) of the NHRA (see Section 2 above).

The palaeontological resources are deemed to have potentially high cultural significance for their scientific value, although in practice most of the surface of the study area is likely to be of low sensitivity. Although difficult to grade as yet undiscovered fossils, the potential palaeontological resources of the region can be regarded as being up to Grade IIIA but with most fossils perhaps more likely GPA.

Stone Age archaeological traces are very rare in this landscape and more recent historical archaeological resources are considered to have up to medium cultural significance for their historical and social values. The archaeological remains of 19<sup>th</sup> century mining are far more common and are deemed to have high cultural significance for their architectural, historical, scientific, social and technological values. None are currently known from the study area but, given how many such traces occur elsewhere, their occurrence in the study area cannot be ruled out. Although the proposed declaration as a World Heritage Site has fallen through, there are mining-related PHSs in the wider area and Grade II is certainly applicable to the industrial archaeological mining landscape as a whole. The vast majority of other archaeological resources likely to occur in the area would probably have low significance and are generally considered to be GPC.



Graves could be present within the study area and are deemed to have high cultural significance for their social value and would be graded IIIA.

The built heritage of the wider area is generally of no more than medium cultural significance for its architectural, historical and social values, although the four PHSs to the south are Grade II resources.

The cultural landscapes of the area are considered to be of high significance. The archaeological landscape has historical, scientific, social and spiritual significance, the mining landscape is considered to have historical, scientific, social and technological significance, and the natural landscape has aesthetic and scientific significance.

## 6. ASSESSMENT OF IMPACTS

Impacts to fossils, archaeological resources and built heritage are possible and are assessed here. Due to the nature of the proposed drilling (temporary duration, extremely limited extent, minimal visual intrusion) no impacts to the wider cultural landscape are expected, since the landscape will remain as before with no perceivable changes<sup>2</sup>. Despite the very high cultural significance of the landscape and the presence of the R355 scenic route through the southern part of the study area, this aspect is thus of no further concern and is not assessed here.

### 6.1. Impacts to palaeontological resources

Direct impacts to fossils could occur during the operation phase of any drilling that takes place. Because of the potentially high cultural significance of the fossils in the Nama Group sediments, the intensity has been rated as medium. However, the chances of intersecting fossils are considered to be extremely small. The significance before mitigation is considered to be **medium negative** (Table 2). Due to the very small footprint of the proposed prospecting activities, Dr John Almond (pers. comm. 2021) suggests that further study would serve no purpose<sup>3</sup>. As such, no specific mitigation measures are required but a Chance Finds Procedure should be included in the Environmental Management Program (EMPr) so that in the event that a fossil is found workers will know what to do. A Chance Finds Procedure is appended to this report. With mitigation, the significance becomes **low negative**. Because the chances of impacting fossils are so low, the cumulative impacts are also considered to be of low significance. There are no fatal flaws in terms of palaeontology.

**Table 2: Assessment of palaeontological impacts.**

Potential impacts on palaeontological resources	
Nature and status of impact:	Direct, Negative
Extent and duration of impact:	Local, Permanent
Intensity	Medium
Probability of occurrence:	Improbable
Degree to which the impact can be reversed:	Low
Degree to which the impact may cause irreplaceable loss of resources:	Low

<sup>2</sup> From a visual point of view, the presence of a truck-mounted drill rig would not be much different to a tractor and plough.

<sup>3</sup> Note that in the event of mining taking place then a field study would be needed. This would be part of a new application though.

Cumulative impact prior to mitigation:	Low
Significance rating of impact prior to mitigation (Low, Medium, Medium-High, High, or Very-High)	Medium
Degree to which the impact can be mitigated:	Low
Proposed mitigation:	Application of a chance finds procedure
Cumulative impact post mitigation:	Low
Significance rating of impact after mitigation (Low, Medium, Medium-High, High, or Very-High)	Low

## 6.2. Impacts to archaeological and built heritage resources

Direct impacts to archaeological and built heritage resources could occur during the operation phase of any drilling that takes place. However, archaeological resources are generally rare on the landscape. Although unlikely, there could also be isolated buildings still associated with some of the more remote historical mines if any are found in the area. The impact significance before and after mitigation is thus rated as **low negative** (Table 3). The only mitigation measures that can be applied are to ensure that all historical features are avoided during drilling. Advice should be sought from an archaeologist once the drill sites are known in order to assist with this. Because such prospecting does not typically impact on heritage, the cumulative impacts are similarly of low significance. There are no fatal flaws in terms of archaeology.

**Table 3: Assessment of archaeological and built heritage impacts.**

Potential impacts on archaeological resources	
Nature and status of impact:	Direct, Negative
Extent and duration of impact:	Local, Permanent
Intensity	Low
Probability of occurrence:	Improbable
Degree to which the impact can be reversed:	Low
Degree to which the impact may cause irreplaceable loss of resources:	Low
Cumulative impact prior to mitigation:	Low
Significance rating of impact prior to mitigation (Low, Medium, Medium-High, High, or Very-High)	Low
Degree to which the impact can be mitigated:	High
Proposed mitigation:	Avoid any historical features, seek specialist archaeological advice
Cumulative impact post mitigation:	Low
Significance rating of impact after mitigation (Low, Medium, Medium-High, High, or Very-High)	Low

## 6.3. The No-Go alternative

Implementation of the No-Go alternative would mean that the status quo is retained and no impacts would occur. It should be noted that the no-go alternative would be detrimental to future mining in the area and would thus potentially reduce the inflow of investment into the local economy. Mining could also be a way of protecting, upgrading and promoting mining heritage. The No-Go option could, therefore, not be the best option for heritage resources.

#### **6.4. Existing impacts to heritage resources**

There are currently no obvious threats to heritage resources on the site aside from the natural degradation, weathering and erosion that will affect fossils, rock art and archaeological materials.

#### **6.5. Cumulative impacts**

Due to the nature of the proposed prospecting, cumulative impacts are not expected to be of any concern for this project. They are considered to be of low significance.

#### **6.6. Levels of acceptable change**

Any impact to an archaeological or palaeontological resource or a grave is deemed unacceptable until such time as the resource has been inspected and studied further if necessary. Impacts to the landscape are difficult to quantify but in general a development that visually dominates the landscape from many vantage points is undesirable. Because of the nature of the proposed development, such an impact is not envisaged.

### **7. INPUT TO THE ENVIRONMENTAL MANAGEMENT PROGRAM**

The only points for inclusion in the EMPr are as follows:

- Once the drilling sites are determined, a map should be sent to an archaeologist to consider from the desktop and advise whether any potentially significant areas are to be impacted and whether any survey or avoidance should be effected;
- Project staff must carefully inspect each proposed drilling site for any signs of historical materials or fossils before work starts. If anything of possible concern is seen then it should simply be avoided; and
- In the event that any fossils are uncovered during prospecting, the attached fossil chance Finds Procedure should be applied.

### **8. EVALUATION OF IMPACTS RELATIVE TO SUSTAINABLE SOCIAL AND ECONOMIC BENEFITS**

Section 38(3)(d) of the NHRA requires an evaluation of the impacts on heritage resources relative to the sustainable social and economic benefits to be derived from the development. There presently is a need for copper to support the renewable energy industry and without prospecting for new ore it will not be possible to establish new mining ventures. This would be a negative socio-economic impact both in terms of the ultimate provision of clean energy to South Africa and in terms of reducing the chances of economic investment into the area. Prospecting is, in the long term, thus beneficial to the local economy.

## 9. CONCLUSIONS

This report has found that important palaeontological materials could be present in the area but that further study is not likely to serve any purpose due to the very small footprint of the proposed prospecting. Stone Age resources are rare on the landscape and are of little to no concern. More recent archaeological remains relate to the use of the landscape after the advent of mission stations in the area and, although not of high significance in and of themselves, such traces are also related to living heritage in the area which is significant. These finds are expected to be rare in the study area. Of greater significance is the historical mining landscape which is comprised of industrial archaeological features and some buildings and which has been poorly protected. No features related to this mining landscape are known to occur within the study area.

In the words of the Mining Heritage Trust of Ireland, who visited the Copper Mining Landscape in Namaqualand in 2012 prior to its withdrawal from the UNESCO Tentative World Heritage Listing: “The Namaqualand mining landscape is superlative, but it has fallen victim to unsympathetic environmental remediation and has not escaped the attention of recyclers who have stripped everything of mercantile value from mines. If this area wishes to achieve World Heritage status, it will need to demonstrate valorisation of the widely dispersed elements of its extant heritage and how these are to be managed, conserved and protected in the future”. In the event, formal proclamation of the Namaqualand Copper Mining Landscape (NCML) did not take place and in 2015, the NCML was removed from the World Heritage Listing. In the absence of formal proclamation, it is suggested that the NCML tentatively enjoys at least a Grade II or IIIA significance. Although no sites directly related to this landscape occur in the study area, there are mining sites to the west, east and north.

The nature of the proposed prospecting and the likely very small number of surface heritage traces means that impacts to significant resources are highly unlikely to occur. For precautionary reasons, a desktop evaluation of the drill sites will help to further reduce the chances of any impacts and allow for a site inspection if necessary.

No specific buffers are required anywhere, but this is subject to re-evaluation once the drilling locations are known.

### 9.1. Reasoned opinion of the specialist

Given the very limited chances of any heritage impacts occurring, it is the opinion of the heritage specialist that the proposed prospecting project may proceed.

## 10. RECOMMENDATIONS

It is recommended that SAHRA allow the prospecting project to proceed as planned, but subject to the following recommendations:

- Once the drilling locations are known, a map should be provided to an archaeologist for desktop analysis. If any potentially sensitive areas cannot be avoided then a brief site visit should be carried out to confirm sensitivity and, in consultation with the prospecting

- geologists, propose alternative nearby drill sites. An opinion should then be expressed in a letter that should be submitted to SAHRA confirming whether or not drilling may proceed;
- Regardless of the above archaeological opinion, all drill sites should be carefully inspected by project staff to ensure that no heritage features are present;
  - A fossil Chance Finds Procedure must be included in the project EMPr and implemented in the event of any chance finds of fossils, and
  - If any archaeological material or human burials are uncovered during the course of development then work in the immediate area should be halted. The find would need to be reported to the heritage authorities and may require inspection by an archaeologist. Such heritage is the property of the state and may require excavation and curation in an approved institution.

## 11. REFERENCES

- Almond, J.E. 2019. Proposed re-opening of the Rietberg, Jubilee and Houmeep disused copper mines near Concordia, Namakwaland Magisterial District, Northern Cape. Report prepared for ASHA Consulting (Pty) Ltd. Cape Town: Natura Viva cc.
- Almond, J.E. & Pether, J. 2009. Palaeontological heritage of the Northern Cape. SAHRA palaeotechnical report. Cape Town: Natura Viva cc & Kommetjie: John Pether.
- Bamford, M. 2018. Palaeontological Impact Assessment for the proposed mining operation near Nababeep and Springbok, Northern Cape Province. Report prepared for Southern African Tantalum Mining (Pty) Ltd. Johannesburg: Marion Bamford.
- Burger, CR. 1986. 'n Ondersoek na die Oorsprong en Betekenis van plek- en plaasname in die Landdrosdistrik Namakwaland. Unpublished PhD at the University of Stellenbosch.
- Cairncross, B. 2004. History of the Okiep Copper District Namaqualand, Northern Cape, South Africa. *The Mineralogical Record* 35: 289-317.
- Clifford, T.N. & Barton, E.S. 2012. The O'okiep Copper District, Namaqualand, South Africa: a review of the geology with emphasis on the petrogenesis of the cupriferous Koperberg Suite. *Mineralium Deposita* 47:837–857.
- De Beer, C.H., Gresse, P.G., Theron, J.N. & Almond, J.E. 2002. The geology of the Calvinia area. Explanation to 1: 250 000 geology Sheet 3118 Calvinia. Council for Geoscience, Pretoria.
- Dewar, G. 2007. *The archaeology of the coastal desert of Namaqualand, South Africa: a regional synthesis*. Unpublished DPhil thesis: University of Cape Town.
- Eastwood, E.B. & Smith, B.W. 2005. Fingerprints of the Khoekhoen: geometric and handprinted rock art in the Central Limpopo Basin, southern Africa. *South African Archaeological Society Goodwin Series* 9: 63–76.
- Hodge, E. 1908. Reminiscences of Edward Hodge, Chief Mining and Railway Engineer, Cape Copper Company, 1877 to 1905. Manuscript in the Cape Archives, Reference A 2320, (47F).

- Jowell, P & Folb, A. 2004. Into Kokerboom Country: Namaqualand's Jewish Pioneers. Fernwood Press.
- Kaplan, J. 2010. Archaeological Impact Assessment of a proposed wind energy facility near Springbok, Northern Cape. Unpublished report for DJ Environmental Consultants.
- Kaplan, J. 2016. Heritage Impact Assessment: Namaqualand Regional Water Supply Scheme – upgrade of the water supply pipeline from Okiep to Concordia and Carolusberg, Northern Cape Province. Unpublished report for Enviroafrica.
- Macey, P.H., Siegfried, H.P., Minnaar, H., Almond, J. & Botha, P.M.W. 2011. The geology of the Loeriesfontein area. Explanation to 1: 250 000 geology sheet 3018. Council for Geoscience, Pretoria.
- Marais, J.A.H., Agenbacht, A.L.D., Prinsloo, M. & Basson, W.A. 2001. The geology of the Springbok area. Explanation to 1: 250 000 geology Sheet 2916 Springbok. Council for Geoscience, Pretoria.
- Mining Heritage Trust of Ireland. 2012. Newsletter number 56. June 2012.
- Morris, D. 2018. Heritage Impact Assessment for the proposed prospecting at Spektakel, Namakwa District Municipality, Northern Cape.
- Okiep Copper Company. 1952. *Namaqualand Copper: 100 years of progress*. Cape Town: R. Beerman Publishers. Accessed online from “Namaqualand Geology & Archaeology” on 5 June 2021 at: [https://www.facebook.com/groups/572343416862762?\\_rdc=1&\\_rdr](https://www.facebook.com/groups/572343416862762?_rdc=1&_rdr).
- Orton, J.D. 2012. Late Holocene archaeology in Namaqualand, South Africa: hunter-gatherers and herders in a semi-arid environment. Unpublished D Phil thesis: University of Oxford.
- Orton, J. 2018. Heritage Feasibility Study, Concordia Wind Energy Facility, Northern Cape. Report prepared for juwi Renewable Energies (Pty) Ltd. Lakeside: ASHA Consulting (Pty) Ltd.
- Orton, J. 2019. Heritage Impact Assessment: proposed reopening of three copper mines at Concordia, Namakwaland Magisterial District, Northern Cape. Report prepared for N.J. van Zyl. Lakeside: ASHA Consulting (Pty) Ltd.
- Orton, J. & Halkett, D. 2010. Stone tools, beads and a river: two Holocene microlithic sites at Jakkalsberg in the northwestern Richtersveld, Northern Cape. *South African Archaeological Bulletin* 65: 13-25.
- Robertshaw, P.T. 1978. The archaeology of an abandoned pastoralist camp-site. *South African Journal of Science* 74: 29-31.
- Ross, G. 1998. Richard Thomas Hill and the Little Railway of Namaqualand. *SA Rail & Harbours* July-September 1998: 142-147.

- Rudner, J. & Rudner, I. 1968. Rock-art in the thirstland areas. *South African Archaeological Bulletin* 23: 75–89.
- SAHRA. 2007. Minimum Standards: archaeological and palaeontological components of impact assessment reports. Document produced by the South African Heritage Resources Agency, May 2007.
- Smalberger, J.M. 1975. *A history of Copper Mining in Namaqualand*. C. Struik (Pty) Ltd: Cape Town & Johannesburg.
- Smith, A.B. 2013. Proposed Solar PV Facility: Klipdam Farm 134/17 Springbok: A heritage impact assessment. Unpublished report for Footprint Environmental Services.
- Smith, B.W. & Ouzman, S. 2004. Taking stock: identifying Khoekhoen herder rock art in southern Africa. *Current Anthropology* 45: 499–526.
- Van Rijssen, W.J. 1994. Rock art: the question of authorship. In: Dowson, T.A. & Lewis-Williams, D. (eds) *Contested Images: Diversity in Southern African Rock Art Research*: 159–175. Johannesburg: Witwatersrand University Press.
- Von Zeil, A-G. 2015. In Memory of the Two 'Bill' Dukes: The role of Duke Of Edinburgh's Own Volunteer Rifles in the Relief of O'okiep, Namaqualand, 1902. *Military History Journal* 16(5). Accessed online on 5 July 2021 at: <http://samilitaryhistory.org/vol165vz.html>.
- Webley, L. 1992. The history and archaeology of pastoralist and hunter-gatherer settlement in the North-Western Cape, South Africa. Unpublished DPhil thesis: University of Cape Town.
- Webley, L. 2009. The Namaqualand stockpost. *Vernacular Architecture Society of South Africa* 21: 21-35.

# APPENDIX 1 – Curriculum Vitae



*Curriculum Vitae*

**Jayson David John Orton**

ARCHAEOLOGIST AND HERITAGE CONSULTANT

## Contact Details and personal information:

**Address:** 23 Dover Road, Muizenberg, 7945  
**Telephone:** (021) 788 1025  
**Cell Phone:** 083 272 3225  
**Email:** jayson@asha-consulting.co.za

**Birth date and place:** 22 June 1976, Cape Town, South Africa  
**Citizenship:** South African  
**ID no:** 760622 522 4085  
**Driver's License:** Code 08  
**Marital Status:** Married to Carol Orton  
**Languages spoken:** English and Afrikaans

## Education:

SA College High School	Matric	1994
University of Cape Town	B.A. (Archaeology, Environmental & Geographical Science) 1997	
University of Cape Town	B.A. (Honours) (Archaeology)*	1998
University of Cape Town	M.A. (Archaeology)	2004
University of Oxford	D.Phil. (Archaeology)	2013

\*Frank Schweitzer memorial book prize for an outstanding student and the degree in the First Class.

## Employment History:

Spatial Archaeology Research Unit, UCT	Research assistant	Jan 1996 – Dec 1998
Department of Archaeology, UCT	Field archaeologist	Jan 1998 – Dec 1998
UCT Archaeology Contracts Office	Field archaeologist	Jan 1999 – May 2004
UCT Archaeology Contracts Office	Heritage & archaeological consultant	Jun 2004 – May 2012
School of Archaeology, University of Oxford	Undergraduate Tutor	Oct 2008 – Dec 2008
ACO Associates cc	Associate, Heritage & archaeological consultant	Jan 2011 – Dec 2013
ASHA Consulting (Pty) Ltd	Director, Heritage & archaeological consultant	Jan 2014 –

## Professional Accreditation:

Association of Southern African Professional Archaeologists (ASAPA) membership number: 233  
CRM Section member with the following accreditation:

- Principal Investigator: Coastal shell middens (awarded 2007)  
Stone Age archaeology (awarded 2007)  
Grave relocation (awarded 2014)
- Field Director: Rock art (awarded 2007)  
Colonial period archaeology (awarded 2007)

Association of Professional Heritage Practitioners (APHP) membership number: 43

- Accredited Professional Heritage Practitioner

## ➤ Memberships and affiliations:



South African Archaeological Society Council member	2004 – 2016
Assoc. Southern African Professional Archaeologists (ASAPA) member	2006 –
UCT Department of Archaeology Research Associate	2013 –
Heritage Western Cape APM Committee member	2013 –
UNISA Department of Archaeology and Anthropology Research Fellow	2014 –
Fish Hoek Valley Historical Association	2014 –
Kalk Bay Historical Association	2016 –
Association of Professional Heritage Practitioners member	2016 –

### **Fieldwork and project experience:**

Extensive fieldwork and experience as both Field Director and Principle Investigator throughout the Western and Northern Cape, and also in the western parts of the Free State and Eastern Cape as follows:

#### Feasibility studies:

- Heritage feasibility studies examining all aspects of heritage from the desktop

#### Phase 1 surveys and impact assessments:

- Project types
  - Notification of Intent to Develop applications (for Heritage Western Cape)
  - Desktop-based Letter of Exemption (for the South African Heritage Resources Agency)
  - Heritage Impact Assessments (largely in the Environmental Impact Assessment or Basic Assessment context under NEMA and Section 38(8) of the NHRA, but also self-standing assessments under Section 38(1) of the NHRA)
  - Archaeological specialist studies
  - Phase 1 archaeological test excavations in historical and prehistoric sites
  - Archaeological research projects
- Development types
  - Mining and borrow pits
  - Roads (new and upgrades)
  - Residential, commercial and industrial development
  - Dams and pipe lines
  - Power lines and substations
  - Renewable energy facilities (wind energy, solar energy and hydro-electric facilities)

#### Phase 2 mitigation and research excavations:

- ESA open sites
  - Duinefontein, Gouda, Namaqualand
- MSA rock shelters
  - Fish Hoek, Yzerfontein, Cederberg, Namaqualand
- MSA open sites
  - Swartland, Bushmanland, Namaqualand
- LSA rock shelters
  - Cederberg, Namaqualand, Bushmanland
- LSA open sites (inland)
  - Swartland, Franschhoek, Namaqualand, Bushmanland
- LSA coastal shell middens
  - Melkbosstrand, Yzerfontein, Saldanha Bay, Paternoster, Dwarskersbos, Infanta, Knysna, Namaqualand
- LSA burials
  - Melkbosstrand, Saldanha Bay, Namaqualand, Knysna
- Historical sites
  - Franschhoek (farmstead and well), Waterfront (fort, dump and well), Noordhoek (cottage), variety of small excavations in central Cape Town and surrounding suburbs
- Historic burial grounds
  - Green Point (Prestwich Street), V&A Waterfront (Marina Residential), Paarl

### **Awards:**

Western Cape Government Cultural Affairs Awards 2015/2016: Best Heritage Project.

## APPENDIX 2 – Fossil Finds Procedure

APPENDIX: CHANCE FOSSIL FINDS PROCEDURE: Prospecting on Portions 3, 4, 5, 6, 7, 8 & 10 Ezelsfontein 214, Northern Cape	
<b>Province &amp; region:</b>	NORTHERN CAPE, Namakwaland District
<b>Responsible Heritage Resources Agency</b>	SAHRA (Contact details: SAHRA, 111 Harrington Street, Cape Town. PO Box 4637, Cape Town 8000, South Africa. Phone: +27 (0)21 462 4502. Fax: +27 (0)21 462 4509. Web: www.sahra.org.za).
<b>Rock unit(s)</b>	Late Precambrian Nama Kuibis Subgroup, Late Caenozoic alluvium, calcretes along water courses and calcrete hardpans
<b>Potential fossils</b>	Shells, stromatolites, cyanobacterial mat wrinkle structures, bones, teeth and horn cores of mammals, freshwater molluscs, calcretised termitaria and other trace fossils
<b>ECO protocol</b>	1. Once alerted to fossil occurrence(s): alert site foreman, stop work in area immediately ( <i>N.B.</i> safety first!), safeguard site with security tape / fence / sand bags if necessary.
	2. Record key data while fossil remains are still <i>in situ</i> : <ul style="list-style-type: none"> <li>• Accurate geographic location – describe and mark on site map / 1: 50 000 map / satellite image / aerial photo</li> <li>• Context – describe position of fossils within stratigraphy (rock layering), depth below surface</li> <li>• Photograph fossil(s) <i>in situ</i> with scale, from different angles, including images showing context (<i>e.g.</i> rock layering)</li> </ul>
	3. If feasible to leave fossils <i>in situ</i> : <ul style="list-style-type: none"> <li>• Alert Heritage Resources Agency and project palaeontologist (if any) who will advise on any necessary mitigation</li> <li>• Ensure fossil site remains safeguarded until clearance is given by the Heritage Resources Agency for work to resume</li> </ul>
	3. If <i>not</i> feasible to leave fossils <i>in situ</i> (emergency procedure only): <ul style="list-style-type: none"> <li>• <i>Carefully</i> remove fossils, as far as possible still enclosed within the original sedimentary matrix (<i>e.g.</i> entire block of fossiliferous rock)</li> <li>• Photograph fossils against a plain, level background, with scale</li> <li>• Carefully wrap fossils in several layers of newspaper / tissue paper / plastic bags</li> <li>• Safeguard fossils together with locality and collection data (including collector and date) in a box in a safe place for examination by a palaeontologist</li> <li>• Alert Heritage Resources Agency and project palaeontologist (if any) who will advise on any necessary mitigation</li> </ul>
	4. If required by Heritage Resources Agency, ensure that a suitably-qualified specialist palaeontologist is appointed as soon as possible by the developer.
	5. Implement any further mitigation measures proposed by the palaeontologist and Heritage Resources Agency
<b>Specialist palaeontologist</b>	Record, describe and judiciously sample fossil remains together with relevant contextual data (stratigraphy / sedimentology / taphonomy). Ensure that fossils are curated in an approved repository ( <i>e.g.</i> museum / university / Council for Geoscience collection) together with full collection data. Submit Palaeontological Mitigation report to Heritage Resources Agency. Adhere to best international practice for palaeontological fieldwork and Heritage Resources Agency minimum standards.