

# PALAEONTOLOGICAL IMPACT ASSESSMENT

Soyuz 2 Wind Energy  
Facility

NORTHERN CAPE PROVINCE  
2023

COMPILED FOR:  
CES – ENVIRONMENTAL AND  
SOCIAL ADVISORY SERVICES



## Declaration of Independence

I, Elize Butler, declare that –

General declaration:

- I act as the independent palaeontological specialist in this application
- I will perform the work relating to the application in an objective manner, even if this results in views and findings that are not favorable to the applicant
- I declare that there are no circumstances that may compromise my objectivity in performing such work;
- I have expertise in conducting palaeontological impact assessments, including knowledge of the Act, Regulations and any guidelines that have relevance to the proposed activity;
- I will comply with the Act, Regulations, and all other applicable legislation;
- I will take into account, to the extent possible, the matters listed in section 38 of the NHRA when preparing the application and any report relating to the application;
- I have no, and will not engage in, conflicting interests in the undertaking of the activity;
- I undertake to disclose to the applicant and the competent authority all material information in my possession that reasonably has or may have the potential of influencing - any decision to be taken with respect to the application by the competent authority; and - the objectivity of any report, plan, or document to be prepared by myself for submission to the competent authority;
- I will ensure that information containing all relevant facts in respect of the application is distributed or made available to interested and affected parties and the public and that participation by interested and affected parties is facilitated in such a manner that all interested and affected parties will be provided with a reasonable opportunity to participate and to provide comments on documents that are produced to support the application;
- I will provide the competent authority with access to all information at my disposal regarding the application, whether such information is favorable to the applicant or not
- All the particulars furnished by me in this form are true and correct;
- I will perform all other obligations as expected a palaeontological specialist in terms of the Act and the constitutions of my affiliated professional bodies; and
- I realize that a false declaration is an offense in terms of regulation 71 of the Regulations and is punishable in terms of section 24F of the NEMA.



## Disclosure of Vested Interest

I do not have and will not have any vested interest (either business, financial, personal, or other) in the proposed activity proceeding other than remuneration for work performed in terms of the Regulations.

PALAEONTOLOGICAL CONSULTANT:

Banzai Environmental (Pty) Ltd

CONTACT PERSON:

Elize Butler

Tel: +27 844478759

Email: elizebutler002@gmail.com

SIGNATURE:



The Palaeontological impact assessment report (as part of the Heritage Assessment) has been compiled considering the National Environmental Management Act 1998 (NEMA) and Environmental Impact Regulations 2014 (as amended) requirements for specialist reports, Appendix 6, as indicated in the table below.

<i>Table 1: Checklist for Specialist studies conformance with Appendix 6 of the EIA Regulations of 2014 (as amended).</i>		
<b>Requirements of Appendix 6 – GN R326 EIA Regulations of 7 April 2017</b>	<b>The relevant section in the report</b>	<b>Comment where not applicable.</b>
1.(1) (a) (i) Details of the specialist who prepared the report	Section 2 of Report – Contact details and company and Appendix A	-
(ii) The expertise of that person to compile a specialist report including a curriculum vita	Section 2 – refer to <b>Appendix 2</b>	-
(b) A declaration that the person is independent in a form as may be specified by the competent authority	Page 2-3 of the report	-
(c) An indication of the scope of, and the purpose for which, the report was prepared	Section 3	-
(cA) An indication of the quality and age of base data used for the specialist report	Section 5 –	-
(cB) a description of existing impacts on the site, cumulative impacts of the proposed development and levels of acceptable change;	Section 8	-
(d) The duration, date and season of the site investigation and the relevance of the season to the outcome of the assessment	Section 1;8 & 10	



<i>Table 1: Checklist for Specialist studies conformance with Appendix 6 of the EIA Regulations of 2014 (as amended).</i>		
<b>Requirements of Appendix 6 – GN R326 EIA Regulations of 7 April 2017</b>	<b>The relevant section in the report</b>	<b>Comment where not applicable.</b>
(e) a description of the methodology adopted in preparing the report or carrying out the specialised process inclusive of equipment and modelling used	Section 3	-
(f) details of an assessment of the specifically identified sensitivity of the site related to the proposed activity or activities and its associated structures and infrastructure, inclusive of a site plan identifying site alternative;	Section 1;8 & 10	
(g) An identification of any areas to be avoided, including buffers	Section 1 & 10	
(h) A map superimposing the activity including the associated structures and infrastructure on the environmental sensitivities of the site including areas to be avoided, including buffers;	Section 5 – Geological and Palaeontological history	
(i) A description of any assumptions made and any uncertainties or gaps in knowledge;	Section 3	-
(j) A description of the findings and potential implications of such findings on the impact of the proposed activity, including identified alternatives, on the environment	Section 1 and 10	
(k) Any mitigation measures for inclusion in the EMP	Section 11	
(l) Any conditions for inclusion in the environmental authorisation	Section 1 and 10	



<i>Table 1: Checklist for Specialist studies conformance with Appendix 6 of the EIA Regulations of 2014 (as amended).</i>		
<b>Requirements of Appendix 6 – GN R326 EIA Regulations of 7 April 2017</b>	<b>The relevant section in the report</b>	<b>Comment where not applicable.</b>
(m) Any monitoring requirements for inclusion in the EMPr or environmental authorisation	Section 1 and 10	
(n)(i) A reasoned opinion as to whether the proposed activity, activities or portions thereof should be authorised and	Section 1 and 10	
(n)(iA) A reasoned opinion regarding the acceptability of the proposed activity or activities; and		
(n)(ii) If the opinion is that the proposed activity, activities, or portions thereof should be authorised, any avoidance, management and mitigation measures that should be included in the EMPr, and where applicable, the closure plan	Section 1 and 10	-
(o) A description of any consultation process that was undertaken during the course of carrying out the study	N/A	Not applicable. A public consultation process was handled as part of the Environmental Impact Assessment (EIA) and Environmental Management



<i>Table 1: Checklist for Specialist studies conformance with Appendix 6 of the EIA Regulations of 2014 (as amended).</i>		
<b>Requirements of Appendix 6 – GN R326 EIA Regulations of 7 April 2017</b>	<b>The relevant section in the report</b>	<b>Comment where not applicable.</b>
		Plan (EMP) process.
(p) A summary and copies of any comments that were received during any consultation process	N/A	Not applicable. To date, no comments regarding heritage resources that require input from a specialist have been raised.
(q) Any other information requested by the competent authority.	N/A	Not applicable.
(2) Where a government notice by the Minister provides for any protocol or minimum information requirement to be applied to a specialist report, the requirements as indicated in such notice will apply.	Section 4 compliance with SAHRA guidelines	



## EXECUTIVE SUMMARY

Banzai Environmental was appointed by CES – ENVIRONMENTAL AND SOCIAL ADVISORY SERVICES to conduct the Palaeontological Impact Assessment (PIA) to assess a Renewable Energy Cluster comprising of six Wind Energy Facilities near Britstown in the Northern Cape Province. This study focuses on Soyuz 2, a commercial Wind Energy Facility (WEF) and associated infrastructure, located approximately 23 km South East of Britstown within the Emthanjeni Local Municipality and the Pixley ka Seme District Municipality in the Northern Cape Province. In accordance with the National Environmental Management Act 107 of 1998 (NEMA) and to comply with the National Heritage Resources Act (No 25 of 1999, section 38) (NHRA), this PDA is necessary to confirm if fossil material could potentially be present in the planned development area, to evaluate the potential impact of the proposed development on the Palaeontological Heritage and to mitigate possible damage to fossil resources.

The Soyuz 2 WEF development is underlain by the Late Caenozoic alluvium, Late Tertiary to Quaternary calcretes, Jurassic Karoo dolerite, the Abrahamskraal Formation (Beaufort Group) as well as the Ecca Group of the Karoo Supergroup. Large areas are underlain by dykes and sills of Jurassic Dolerite in the center and eastern portion of the development. This is typical of this part of the basin and sediments of the surrounding Beaufort and Ecca Group have been baked, thus compromising the fossil heritage of the area through thermal metamorphism. According to the PalaeoMap on the South African Heritage Resources Information System (SAHRIS) database, the Palaeontological Sensitivity of the Late Caenozoic superficial deposits is Moderate, Late Tertiary to Quaternary calcretes is High, the Jurassic dolerite is Zero while that of the Adelaide Subgroup is Very High while that of the Ecca Group is High (Almond *et al*, 2013; SAHRIS website).

Extensive research and fossil collecting have been conducted by palaeontologists in the last few decades, however, the Britstown area have been largely neglected. A 6-day overall comprehensive site-specific field survey of the Soyuz WEF Cluster was conducted on foot and by motor vehicle in October 2022. In the area investigated no fossiliferous outcrops were recovered. This could be attributed to the dolerite intrusions that metamorphized potentially fossiliferous Beaufort sediments, low relief of the development as well as poor bedrock exposure and relative unfossiliferous superficial sediments. However, it must be emphasised that the presence of well-preserved fossils is not ruled out.

**A High Palaeontological Significance has been allocated for the construction phase of the WEF development pre-mitigation and a low significance post mitigation.** The construction phase will be the only development phase impacting Palaeontological Heritage and **no significant impacts are expected to impact the Operational and Decommissioning phases.** As the No-Go Alternative considers the option of 'do nothing' and maintaining the status quo, it will have a Neutral impact





on the Palaeontological Heritage of the development. The **Cumulative impacts of the Soyuz 2 WEF development near Britstown is considered to be high pre-mitigation and Low post mitigation and falls within the acceptable limits for the project.** It is therefore considered that the proposed development will not lead to destructive impacts on the palaeontology of the area. **The construction of the development may thus be authorized in its whole extent, as the development footprint is not considered sensitive from a palaeontological point of view.** It is thus recommended that no further palaeontological heritage studies, ground truthing or specialist mitigation are required pending the discovery of new fossil assemblages.

#### Recommendations:

- The ECO for this project must be informed that the Abrahamskraal Formation, Adelaide Subgroup, Beaufort Group, Karoo Supergroup) has a **Very High Palaeontological Sensitivity** while that of the Ecca Group of the Karoo Supergroup has a **High Palaeontological Sensitivity**.
- Basic training in identifying fossil heritage is recommended for the ECO and relevant staff. If any fossil remains or trace fossils are discovered during any phase of construction or operation, either on the surface or exposed by excavations, the ECO in charge of this development should implement the **Chance find Protocol** immediately. These discoveries should be protected (if possible, *in situ*) and the ECO must report such discoveries to SAHRA (Contact details: SAHRA, 111 Harrington Street, Cape Town. PO Box 4637, Cape Town 8000, South Africa. Tel: 021 462 4502. Fax: +27 (0)21 462 4509. Web: [www.sahra.org.za](http://www.sahra.org.za)). Suitable mitigation (e.g., recording and collection) will consequently be undertaken by a palaeontologist.
- Before any fossil material can be collected from the development site, the specialist involved would need to apply for a collection permit from SAHRA. Fossil material must be housed in an official collection (museum or university), while all reports and fieldwork should meet the minimum standards for palaeontological impact studies proposed by SAHRA (2012).
- These recommendations should be incorporated into the Environmental Management Plan for the Soyuz 2 WEF.



### Impact Summary

Impacts	Extent	Duration	Magnitude	Reversibility	Irreplaceable loss	Cumulative effect	Impact
<b>Pre-mitigation</b>	1	4	3	4	4	4	Negative High 48
<b>Post mitigation</b>	1	4	1	4	4	2	Negative Low 15



## TABLE OF CONTENT

<b>1</b>	<b>INTRODUCTION .....</b>	<b>1</b>
1.1	SOYUZ 2 WEF project	1
1.2	Legislative Context	6
<b>2</b>	<b>QUALIFICATIONS AND EXPERIENCE OF THE AUTHOR .....</b>	<b>6</b>
<b>3</b>	<b>LEGISLATION .....</b>	<b>6</b>
<b>4</b>	<b>OBJECTIVE.....</b>	<b>8</b>
<b>5</b>	<b>GEOLOGICAL AND PALAEOONTOLOGICAL HISTORY .....</b>	<b>10</b>
<b>6</b>	<b>GEOGRAPHICAL LOCATION OF THE SITE .....</b>	<b>22</b>
<b>7</b>	<b>METHODS .....</b>	<b>22</b>
7.1	Assumptions and Limitations	22
<b>8</b>	<b>ADDITIONAL INFORMATION CONSULTED.....</b>	<b>23</b>
<b>9</b>	<b>SITE VISIT .....</b>	<b>23</b>
<b>10</b>	<b>IMPACT ASSESSMENT METHODOLOGY.....</b>	<b>26</b>
10.1	Impact Rating System	26
10.2	Summary of Impact Tables	30
<b>11</b>	<b>FINDINGS AND RECOMMENDATIONS.....</b>	<b>31</b>
<b>12</b>	<b>CHANGE FINDS PROTOCOL .....</b>	<b>32</b>
<b>13</b>	<b>BIBLIOGRAPHY .....</b>	<b>33</b>

## LIST OF FIGURES

<b>Figure 1:</b>	<b>Regional locality of the proposed Soyuz 2 WEF in the Northern Cape. ....</b>	<b>2</b>
<b>Figure 2:</b>	<b>Proposed Soyuz 2 Wind Energy Facility near Britstown in the Northern Cape. ....</b>	<b>3</b>
<b>Figure 3:</b>	<b>Topographic image of the proposed Soyuz 2 Wind Energy Facility Project. ....</b>	<b>4</b>
<b>Figure 4:</b>	<b>Extract of the 1:250 000 Geological map Britstown 3022 (1991) Geological Map (Council for Geosciences, Pretoria) indicating the proposed Soyuz 2 WEF in blue. ....</b>	<b>13</b>
<b>Figure 5:</b>	<b>Vertebrate biozonation range chart for the Main Karoo Basin of South Africa. ....</b>	<b>15</b>
<b>Figure 6:</b>	<b>Tapinocephalus atherstonei, the index taxon of the Tapinocephalus Assemblage Zone, in lateral and dorsal view (Image taken from Day and Rubidge, 2020). ....</b>	<b>16</b>
<b>Figure 7:</b>	<b>Lateral and dorsal view of the index taxa of the Eosimops - Glanosuchus Subzone in (top) Eosimops newtoni; (bottom) Glanosuchus macrops (Image taken from Day and Rubidge, 2020). ....</b>	<b>17</b>



<b>Figure 8:</b> Illustration of the index taxa of the Diictodon - Styraococephalus Subzone in lateral and dorsal view. (top) Diictodon feliceps; (bottom) Styraococephalus platyrhynchus (Image taken from Day and Rubidge, 2020). .....	18
<b>Figure 9:</b> Lateral and dorsal views of biozone-defining fossils of the Eodicynodon Assemblage Zone: Eodicynodon oosthuizeni (top), Tapinocaninus pamelaiae (bottom) (Image taken from Rubidge and Day, 2020). .....	19
<b>Figure 10:</b> Updated geology (Council for Geosciences, Pretoria) indicates that the proposed SOYUZ 2 WEF is underlain by alluvium, colluvium, elluvium, gravel, calcrete, surface limestone and Hardpan and Jurassic Dolerite as well as the Abrahamskraal Formation (Beaufort Group) and the Waterford Formation of the Ecca Group (Karoo Supergroup). .....	20
<b>Figure 11:</b> Extract of the 1 in 250 000 SAHRIS PalaeoMap map (Council of Geosciences) indicating the WEF development in yellow. Fossils found near the SOYUZ 2 WEF project area are indicated by white triangles. ....	21
<b>Figure 12:</b> General view over the development indicates low- lying plains (bossieveld) underlain by sandy sediments and indicates an absence of bedrock exposures. Tertiary-Quaternary calcretes is present in the foreground. ....	24
<b>Figure 13:</b> General view over the development indicates low- lying plains (bossieveld) underlain by sandy sediments. ....	25

## LIST OF TABLES

Table 1: Checklist for Specialist studies conformance with Appendix 6 of the EIA Regulations of 2014 (as amended). .....	iv
Table 2: Legend of the 1:250 000 Britstown 3022 (1991) Geological Map (Council for Geosciences, Pretoria). ....	14
Table 3: Palaeontological Sensitivity according to the SAHRIS PalaeoMap (Almond et al, 2013; SAHRIS website).....	22
Table 4: The rating system.....	26

## APPENDIX A:

Curriculum Vitae                      Elize Butler



## 1 INTRODUCTION

The applicant, Soyuz 2 (Pty) Ltd is proposing the development of a commercial Wind Energy Facility (WEF) and associated infrastructure on a site located approximately 23 km South East of Britstown within the Emthanjeni Local Municipality and the Pixley ka Seme District Municipality in the Northern Cape Province (**Figure 1-3**).

Five additional WEF's are concurrently being considered on the surrounding properties and are assessed by way of separate impact assessment processes contained in the 2014 Environmental Impact Assessment Regulations (GN No. R982, as amended) for listed activities contained in Listing Notices 1, 2 and 3 (GN R983, R984 and R985, as amended). These projects are known as Soyuz 1 WEF, Soyuz 2 WEF, Soyuz 2 WEF, Soyuz 2 WEF and Soyuz 6 WEF.

A preferred project site with an extent of approximately 125 000 ha has been identified as a technically suitable area for the development of the six WEF projects. It is proposed that each WEF will comprise of up to 75 turbines with a contracted capacity of up to 480 MW. It is anticipated that each WEF will have an actual (permanent) footprint of up to 150 ha.

### 1.1 SOYUZ 2 WEF project

The Soyuz 2 WEF project site covers approximately 38 000 ha and comprises the following farm portions:

- Portion 3 of Farm Twyfelhoek No. 127
- Portion 4 of Farm Twyfelhoek No. 127
- Remaining Extent (Portion 0) of Farm Lemoenkloof No. 141.
- Portion 1 of Farm Lemoenkloof No. 141
- Portion 0 of Farm Twyfelhoek No. 127.
- Portion 5 (a portion of portion 1) of Farm Twyfelhoek No. 127
- Portion 9 (a portion of portion 1) of Farm Twyfelhoek No. 127
- Remaining Extent of Portion 1 of Farm Twyfelhoek No. 127
- Portion 0 of Farm No. 146
- Portion 3 of Farm No. 144.
- Portion 0 of Farm Dreunfontein No. 126
- Remaining Extent Portion 1 of Farm Dreunfontein No. 126

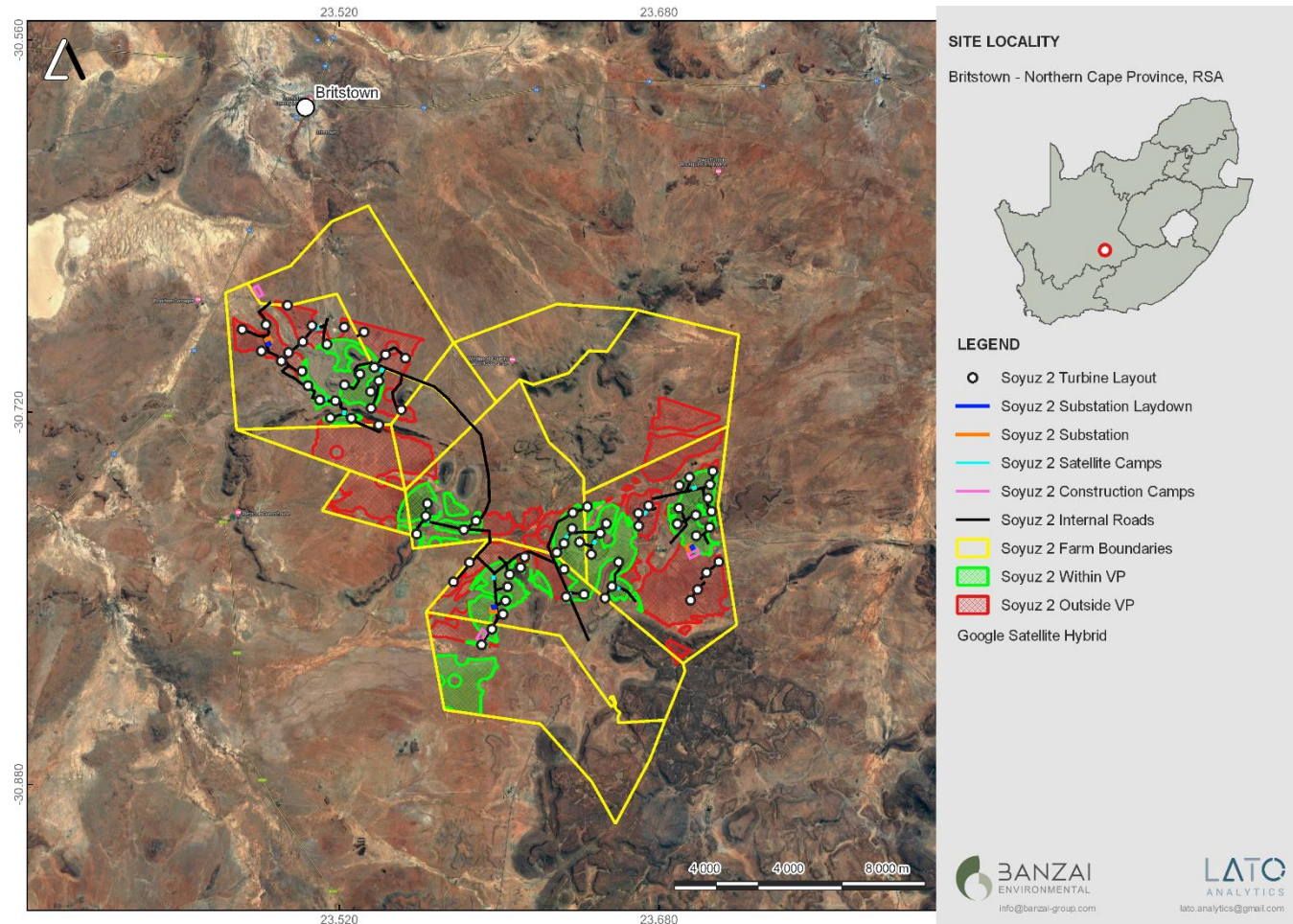
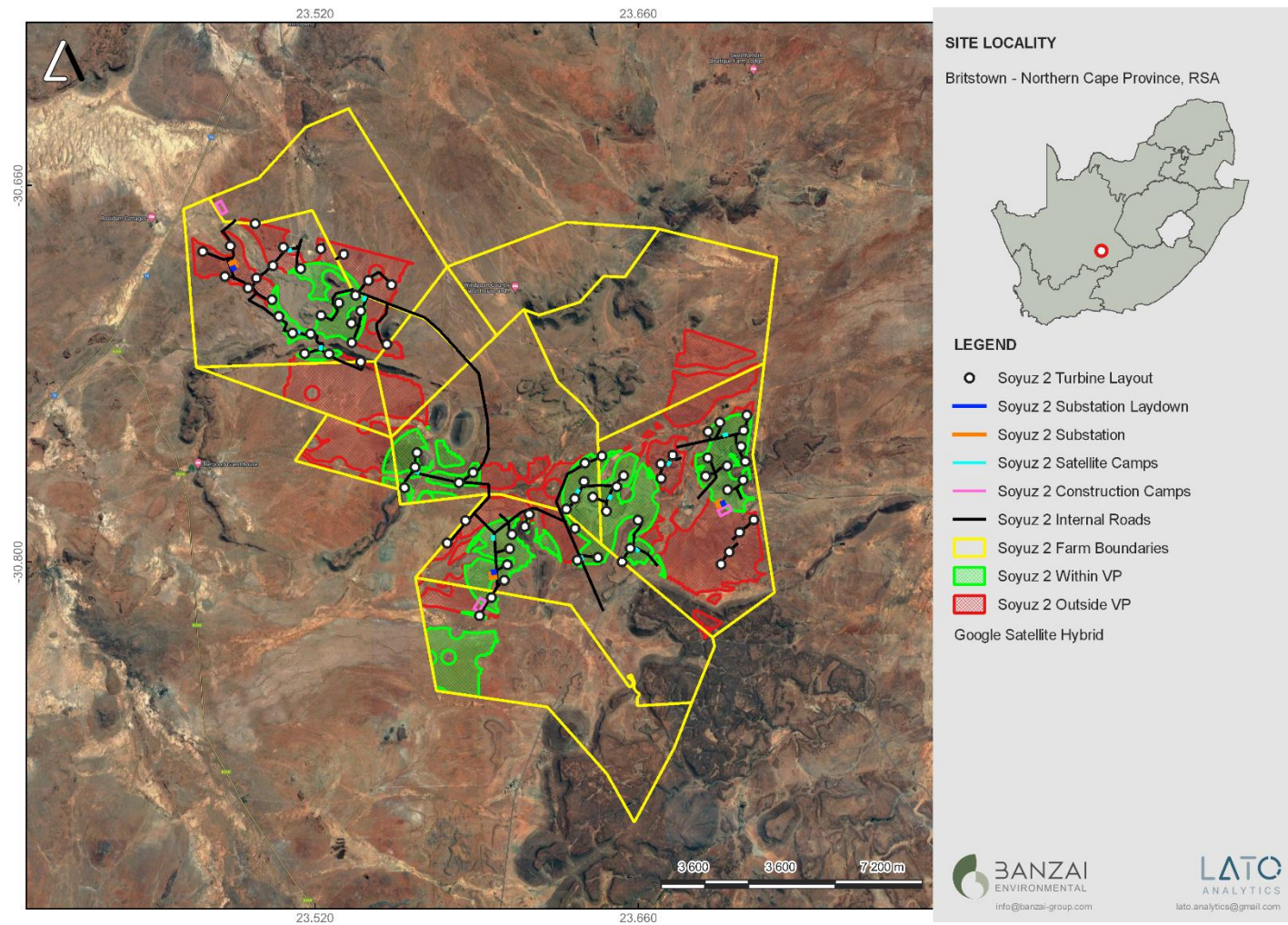
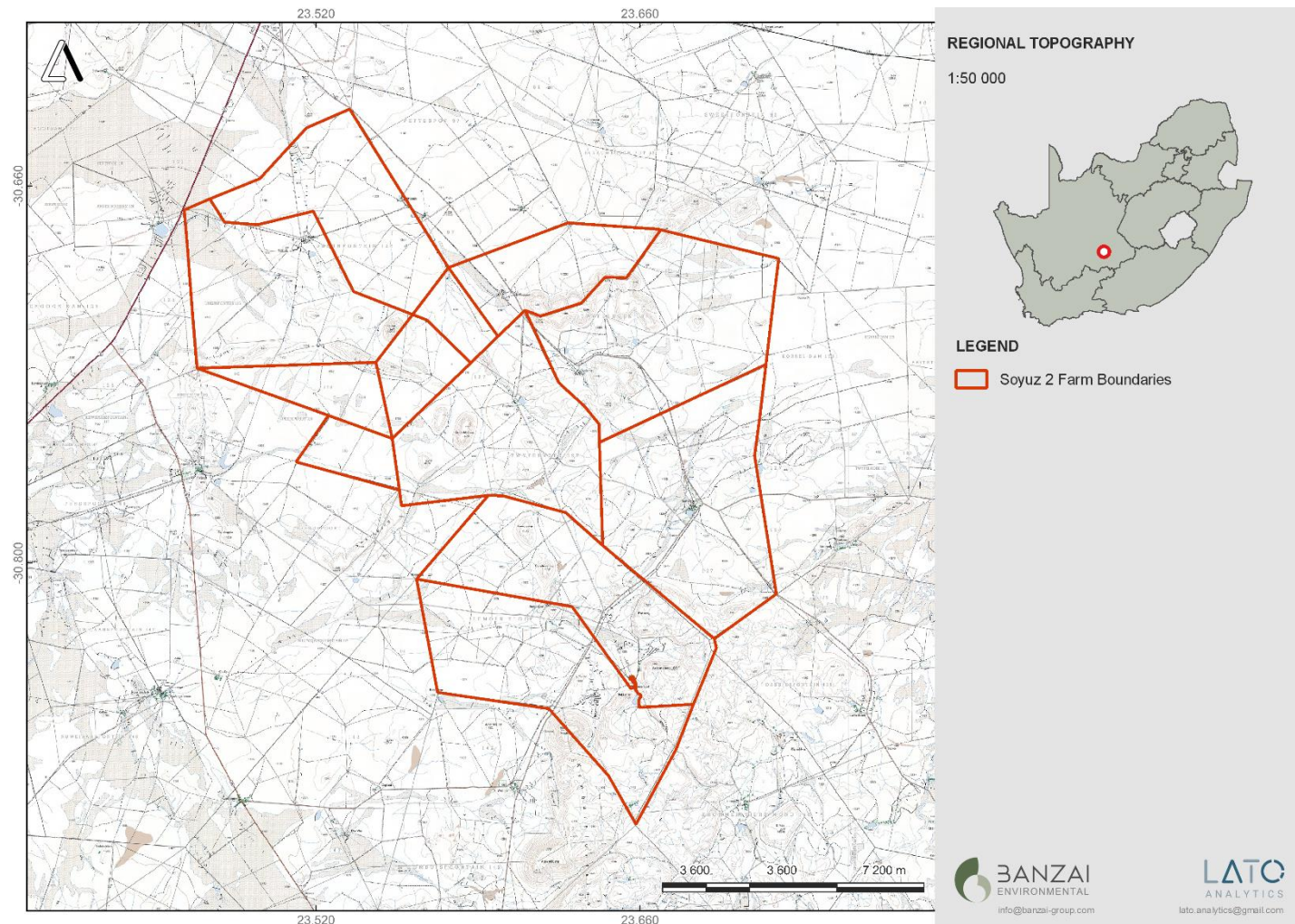


Figure 1: Regional locality of the proposed Soyuz 2 WEF in the Northern Cape.



**Figure 2:** Proposed Soyuz 2 Wind Energy Facility near Britstown in the Northern Cape.



**Figure 3: Topographic image of the proposed Soyuz 2 Wind Energy Facility Project.**





The Soyuz 2 WEF project site is proposed to accommodate the following infrastructure, which will enable the wind farm to supply a contracted capacity of up to 480 MW:

- Up to 75 wind turbines with a maximum hub height of up to 160 m and a rotor diameter of up to 200 m;
- A transformer at the base of each turbine;
- Concrete turbine foundations;
- Turbine, crane, and blade hardstands;
- Temporary laydown areas (with a combined footprint of up to 14 ha) which will accommodate the boom erection, storage, and assembly area;
- Battery Energy Storage System (with a footprint of up to 5 ha);
- Cabling between the turbines, to be laid underground where practical;
- Two on-site substations with a combined footprint of up to 4 ha in extent to facilitate the connection between the wind farm and the electricity grid;
- Access roads to the site and between project components inclusive of stormwater infrastructure. A 12 m road corridor may be temporarily impacted upon during construction and rehabilitated to 6m wide after construction. The WEF will have a total road network of up to 125 km.
- A temporary site camp establishment and concrete batching plants (with a combined footprint of up to 2 ha); and
- Operation and Maintenance buildings (with a combined footprint of up to 2 ha) including a gate house, security building, control centre, offices, warehouses, a workshop, and visitor's centre.

In order to evacuate the energy generated by the WEF to the national grid, separate Basic Assessments will be undertaken to assess two grid connection alternatives:

- Alternative 1: A 132 / 400kV overhead powerline (OHL) within a 500 m wide assessment corridor from the Switching Station on site to a proposed new 132 / 400 kV MTS located north of the WEF and adjacent to the Hydra – Kronos 400 kV line.
- Alternative 2: A 132 / 400 kV overhead powerline (OHL) within a 500 m wide assessment corridor from the Switching Station on site to a proposed new 132 / 400 kV MTS located south of the WEF and adjacent to the Droerivier - Hydra 400 kV line.

The EA applications for the wind farm project and grid connection infrastructure are being undertaken in parallel as they are co-dependent, i.e., one will not be developed without the other.



## 1.2 Legislative Context

In terms of the EIA Regulations, 2014 (as amended), the development of a WEF with a generation capacity of (or exceeding) 20 MW will require an Environmental Authorisation (EA) application supported by a full Scoping and Environmental Impact Reporting process (S&EIR).

## 2 QUALIFICATIONS AND EXPERIENCE OF THE AUTHOR

This study has been conducted by Mrs Elize Butler. She has conducted approximately 400 palaeontological impact assessments for developments in the Free State, KwaZulu-Natal, Eastern, Central, and Northern Cape, Northwest, Gauteng, Limpopo, and Mpumalanga. She has an MSc (*cum laude*) in Zoology (specializing in Palaeontology) from the University of the Free State, South Africa and has been working in Palaeontology for more than twenty-eight years. She has experience in locating, collecting, and curating fossils. She has been a member of the Palaeontological Society of South Africa (PSSA) since 2006 and has been conducting PIAs since 2014.

A curriculum vitae is included in Appendix 1 of this specialist input report.

## 3 LEGISLATION

### National Heritage Resources Act (25 of 1999)

Cultural Heritage in South Africa, which includes all heritage resources, is protected by the National Heritage Resources Act (Act 25 of 1999) (NHRA). Heritage resources as defined in Section 3 of the Act include **“all objects recovered from the soil or waters of South Africa, including archaeological and palaeontological objects and material, meteorites and rare geological specimens”**.

The identification, evaluation and assessment of any cultural heritage site, artefact or finds in the South African context is required and governed by the following legislation:

- National Environmental Management Act (NEMA) Act 107 of 1998
- National Heritage Resources Act (NHRA) Act 25 of 1999
- Minerals and Petroleum Resources Development Act (MPRDA) Act 28 of 2002
- Notice 648 of the Government Gazette 45421- general requirements for undertaking an initial site sensitivity verification where no specific assessment protocol has been identified.



The next section in each Act is directly applicable to the identification, assessment, and evaluation of cultural heritage resources.

GNR 982 (Government Gazette 38282, 14 December 2014) promulgated under the National Environmental Management Act (NEMA) Act 107 of 1998

- Basic Assessment Report (BAR) – Regulations 19 and 23
- Environmental Impacts Assessment (EIA) – Regulation 23
- Environmental Scoping Report (ESR) – Regulation 21
- Environmental Management Programme (EMPr) – Regulations 19 and 23

National Heritage Resources Act (NHRA) Act 25 of 1999

- Protection of Heritage Resources – Sections 34 to 36
- Heritage Resources Management – Section 38

The NEMA (No 107 of 1998) states that an integrated EMP should (23:2 (b)) “...*identify, predict and evaluate the actual and potential impact on the environment, socio-economic conditions and cultural heritage*”.

In agreement with legislative requirements, EIA rating standards as well as SAHRA policies, the following comprehensive and legally compatible PIA report has been compiled.

Palaeontological heritage is exceptional and non-renewable and is protected by the NHRA. Palaeontological resources may not be unearthed, broken moved, or destroyed by any development without prior assessment and without a permit from the relevant heritage resources authority as per section 35 of the NHRA.

**This Palaeontological Impact assessment will inform the Heritage Impact Assessment (HIA) and adhere to the conditions of the Act.** According to **Section 38 (1)**, an HIA is required to assess any potential impacts to palaeontological heritage within the development footprint where:

- the construction of a road, wall, power line, pipeline, canal or other similar form of linear development or barrier exceeding 300 m in length.
- the construction of a bridge or similar structure exceeding 50 m in length.
- any development or other activity which will change the character of a site—
- Exceeding 5 000 m<sup>2</sup> in extent; or
- involving three or more existing erven or subdivisions thereof; or
- involving three or more erven or divisions thereof which have been consolidated within the past five years; or



- the costs of which will exceed a sum set in terms of regulations by SAHRA or a provincial heritage resources authority
- the re-zoning of a site exceeding 10 000 m<sup>2</sup> in extent.
- or any other category of development provided for in regulations by SAHRA or a Provincial heritage resources authority.

#### 4 OBJECTIVE

The aim of a Palaeontological Impact Assessment (PIA) is to minimize the potential impact of the proposed WEF development on potential fossils at the development site.

According to the "SAHRA APM Guidelines: Minimum Standards for the Archaeological and Palaeontological Components of Impact Assessment Reports" the purpose of the PIA is: 1) to identify the palaeontological importance of the rock formations in the footprint; 2) to evaluate the palaeontological magnitude of the formations; 3) to clarify the impact on fossil heritage; and 4) to suggest how the developer might protect and lessen possible damage to fossil heritage.

The palaeontological status of each rock section is calculated as well as the possible impact of the development on fossil heritage by a) the palaeontological importance of the rocks, b) the type of development and c) the quantity of bedrock removed.

When the development footprint has a moderate to high palaeontological sensitivity a field-based assessment is necessary. The desktop and the field survey of the exposed rock determine the impact significance of the planned development and recommendations for further studies or mitigation. Destructive impacts on palaeontological heritage usually only occur during the construction phase while the excavations will change the current topography and destruct or permanently seal-in fossils at or below the ground surface. Fossil Heritage will then no longer be accessible for scientific research.

During a site investigation the palaeontologist does not only survey the development but also tries to determine the density and diversity of fossils in the development area. This is confirmed by examining representative exposures of fossiliferous rocks (sedimentary rocks contain fossil heritage whereas igneous and metamorphic rocks are mostly unfossiliferous). Rock exposures investigated usually contains a large portion of the stratigraphic unit, can be accessed easily and comprise of unweathered (fresh) exposed rock. These exposures may be natural (rocky outcrops in stream or river banks, cliffs, dongas) but could also be artificial (quarries, open building excavations and even railway and road cuttings). It is common practice for palaeontologist to log well-preserved fossils (GPS, and stratigraphic data) during field assessment studies.



Mitigation usually precedes construction or may occur during construction when potentially fossiliferous bedrock is exposed. Mitigation comprises the collection and recording of fossils. Preceding excavation of any fossils, a permit from SAHRA must be obtained and the material will have to be housed in a permitted institution. When mitigation is applied correctly, a positive impact is possible because our knowledge of local palaeontological heritage may be increased.

The fossil potential of the Soyuz 3 WEF development area was determined by criss-crossing the development footprint and by physically investigating the bedrock outcrops to determine the lithology and fossil content of the outcrops. Selected potentially fossiliferous sites (e.g., along drainage lines, hillslopes and erosion gullies) were specifically inspected as this region of the Great Karoo has a limited bedrock exposure. Representative investigations of crevasse splay and channel sandstones as well as Cenozoic alluvial deposits were also conducted. Fossils occurring at the surface is very unpredictable and as the area is very large and a representative sample size of the area has been investigated. The outcome of a site investigation is limited due to the time and cost of a detailed investigation. Fossil sites are usually discovered by chance and a representative subsample is more achievable. However, it is important to note that the absence of fossils in a development footprint does not necessarily mean that palaeontological significant material is not present on site (on or beneath ground surface).

The terms of reference of a PIA are as follows:

**General Requirements:**

- Adherence to the content requirements for specialist reports in accordance with Appendix 6 of the EIA Regulations 2014, as amended.
- Adherence to all applicable best practice recommendations, appropriate legislation, and authority requirements.
- Submit a comprehensive overview of all appropriate legislation, guidelines.
- Description of the proposed project and provide information regarding the developer and consultant who commissioned the study.
- Description and location of the proposed development and provide geological and topographical maps.
- Provide Palaeontological and geological history of the affected area.
- Identification sensitive areas to be avoided (providing shapefiles/kml's) in the proposed development.
- Evaluation of the significance of the planned development during the Pre-construction, Construction, Operation, Decommissioning Phases and Cumulative impacts. Potential impacts should be rated in terms of the direct, indirect, and cumulative:
  - a. **Direct impacts** are impacts that are caused directly by the activity and generally occur at the same time and at the place of the activity.



- b. **Indirect impacts** of an activity are indirect or induced changes that may occur as a result of the activity.
- c. **Cumulative impacts** result from the incremental impact of the proposed activity on a common resource when added to the impacts of other past, present, or reasonably foreseeable future activities.
  - Fair assessment of alternatives:
  - Recommend mitigation measures to minimise the impact of the proposed development; and
  - Implications of specialist findings for the proposed development (such as permits, licenses etc).

## 5 GEOLOGICAL AND PALAEOLOGICAL HISTORY

The Soyuz 2 WEF site is depicted on the 1:250 000 Britstown 3022 (1991) Geological Map (Council for Geosciences, Pretoria) (**Figure 4, Table 2**). The proposed WEF development is underlain by the Late Caenozoic alluvium (yellow single bird figure), Late Tertiary to Quaternary calcretes (T-Qc), Jurassic Karoo dolerite (Jd, red), the Abrahamskraal Formation (Pa- light green) (Beaufort Group) as well as the Ecca Group of the Karoo Supergroup. Large areas are underlain by dykes and sills of Jurassic Dolerite in the center and eastern portion of the development. This is typical of this part of the basin and sediments of the surrounding Beaufort and Ecca Group have been baked, thus compromising the fossil heritage of the area through thermal metamorphism. According to the PalaeoMap on the South African Heritage Resources Information System (SAHRIS) database, the Palaeontological Sensitivity of the Late Caenozoic superficial deposits is Moderate, Late Tertiary to Quaternary calcretes is High, that of the Jurassic dolerite is Zero while that of the Adelaide Subgroup is Very High while that of the Ecca Group is High (Almond *et al*, 2013; SAHRIS website).

The Late Caenozoic superficial deposits are the youngest geological deposits formed during the most recent geological period. Most of the superficial deposits are unconsolidated sediments and consist of clay, gravel, sand, silt, that form relatively thin, discontinuous patches of sediments. These sediments comprise of channel, floodplain, and stream deposits. These include Late Tertiary to Quaternary calcretes (T-Qc; i.e., carbonate-cemented surface deposits).

The Late Caenozoic deposits are very important because palaeoclimatic changes are reflected in the different geological formations (Hunter *et al.*, 2006). During the climate fluctuations in the Cenozoic Era most geomorphologic features in southern Africa where formed (Maud, 2012). Barnosky (2005) indicated that various warming and cooling events occurred in the Cenozoic but states that climatic changes during the Late Caenozoic Period, specifically the last 1.8 Ma,



were the most drastic climate changes relative to all climate variations in the past. Climate variations that occurred in the Late Caenozoic Period were both drier and wetter than the present and resulted in changes in river flow patterns, sedimentation processes and vegetation variation (Tooth *et al.*, 2004).

Late Caenozoic fossil assemblages are generally rare and low in diversity and occur over a wide-ranging geographic area. These fossil assemblages may in some cases occur in extensive alluvial and colluvial deposits. In the past, palaeontologists did not focus on Late Caenozoic superficial deposits although they sometimes comprise of significant fossil deposits. These fossil assemblages resemble modern animals and may comprise of mammalian teeth, bones and horn cores, reptile skeletons and fragments of ostrich eggs. Microfossils, non-marine mollusc shells are also known from Late Caenozoic deposits. Plant material such as foliage, wood, pollens, and peats are recovered as well as trace fossils like vertebrate tracks, burrows, termitaria (termite heaps/ mounds) and rhizoliths (root casts).

A few dolerite dykes and sills are present in the development footprint while the area north and west of the development is extensively intruded by dolerite dikes and sills (Jd, red) of the Karoo Igneous Province. These dolerite intrusions have baked the surrounding potentially fossiliferous bedrock through thermal metamorphism thus influencing the quality of fossil preservation. The Karoo Igneous Province in southern Africa is a classic continental flood basalt province that was formed during the Early Jurassic Period. This province occurs over a comprehensive area in southern Africa and comprises a widespread system well developed igneous bodies (dykes, sills) that invaded the sediments of the Main Karoo Basin. Flood basalts do not typically form any visible volcanic structures, but with a series of outbursts form a suite of fissures of sub-horizontal lava flows that may vary in thickness. The Karoo is an old flood basalt province and is preserved today as erosional remnants of a more extensive lava cap that covered much of southern Africa in the geological past. This Suite is entirely unfossiliferous.

The flood plains of the Beaufort Group (Karoo Supergroup) are internationally renowned for the early diversification of land vertebrates and provide the world's most complete transition from early "reptiles" to mammals. The Beaufort Group is subdivided into a series of biostratigraphic units based on its faunal content (**Figure 5**; Kitching 1977; Keyser *et al.*, 1977; Rubidge 1995; Smith *et al.*, 2020; Viglietti 2020).

The eastern and central section of the Soyuz 2 WEF is underlain by the Abrahamskraal Formation that is biostratigraphically represented by the *Tapinocephalus* (**Figure 6**) and upper *Eodicynodon* AZ (**Figure 7-9**). As the second oldest tetrapod biozone in the Karoo, the *Tapinocephalus* AZ is basically restricted to the Abrahamskraal Formation. The lower margin of the AZ is variable due to diachrony. This AZ comprises of the upper third of the *Abrahamskraal* Formation in the



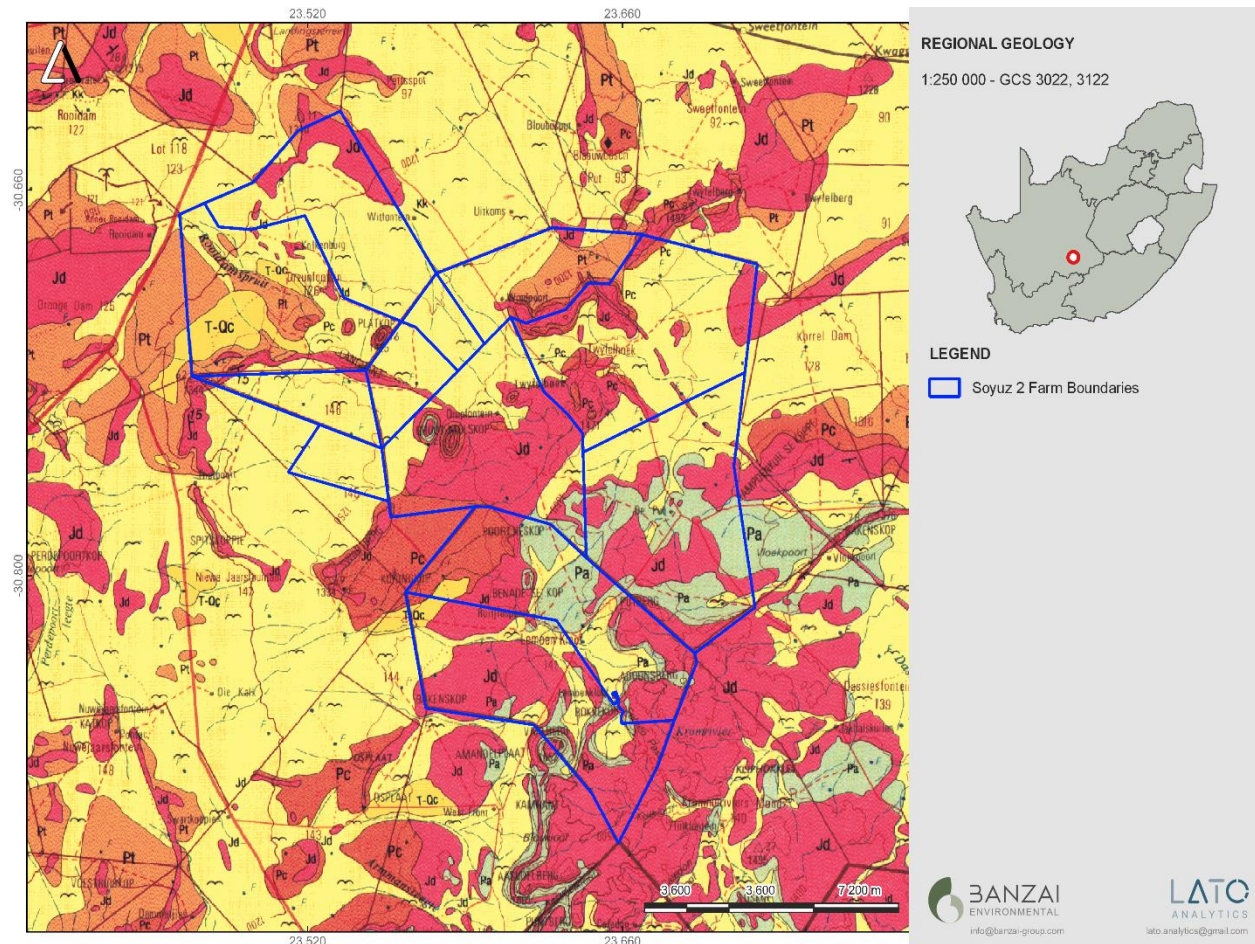
southwestern boundary of the basin. The Abrahamskraal Formation is present in the southern portion of the main Karoo Basin and consists of abundant greenish-grey and less common reddish-brown mudrock. Subordinate light grey fine-grained sandstone is arranged in fining - upward cycles. This Formation is at its thickest (2200 to 2565 m) in the southwestern part of the basin thinning north-eastward. In the southwestern portion of the basin the Abrahamskraal Formation comprises of several arenaceous zones. These sediments were deposited on a large alluvial plain (Cole et al, 2016).

The *Tapinocephalus* AZ is characterised by the tapinocephalid dinocephalian species *Tapinocephalus atherstonei* and *Moschops capensis*, the dicynodont *Eosimops newtoni*, and *Robertia broomiana* and the pareiasaur *Bradysaurus baini*. The *Tapinocephalus* AZ is a rich tetrapod assemblage zone that consists of basal members of therapsid clades Biarmosuchia, Anomodontia, Dicynodontia, Therocephalia, and Gorgonopsia; basal members of the parareptilian clade Pareiasauria; and rare varanopids as well as derived members of the therapsid clade Dinocephalia.

This AZ includes dinocephalians (*Moschops capensis*), basal pareiasaurs (*Bradysaurus*) that co-occur with pylaecephalid dicynodonts *Eosimops* and *Robertia*. This AZ has a maximum thickness of about 1500 m. The Assemblage Zone can be subdivided into two subzones based on the absence of the dicynodont *Diictodon feliceps*: in the lower *Eosimops* - *Glanosuchus* Subzone and the presence of *Diictodon* in the upper *Diictodon* *Eosimops* - *Glanosuchus* Subzone. The contact between these subzones is the first appearance of *Diictodon felips* at the base of the Moordenaars Member. The upper part of the biozone reflects the Capitanian mass extinction and the low diversity post extinction. The first appearance of *Endothiodon bathystoma* terminates the zone.

Rubidge et al (2000) described silicified wood fragments, leaves, and stems from this Formation while *Glossopteris* leaf impressions are abundant in the east (Mason, 2007). Bivalve fossils have been uncovered in the Formation. Trace fossils include fish trails, arthropod trackways (*Monomorphichnus* and *Umfolozia*) with some occurrences of therapsid footprints and vertebrate burrow casts (Smith, 1986, 1990a; Smith and Keyser, 1995a).



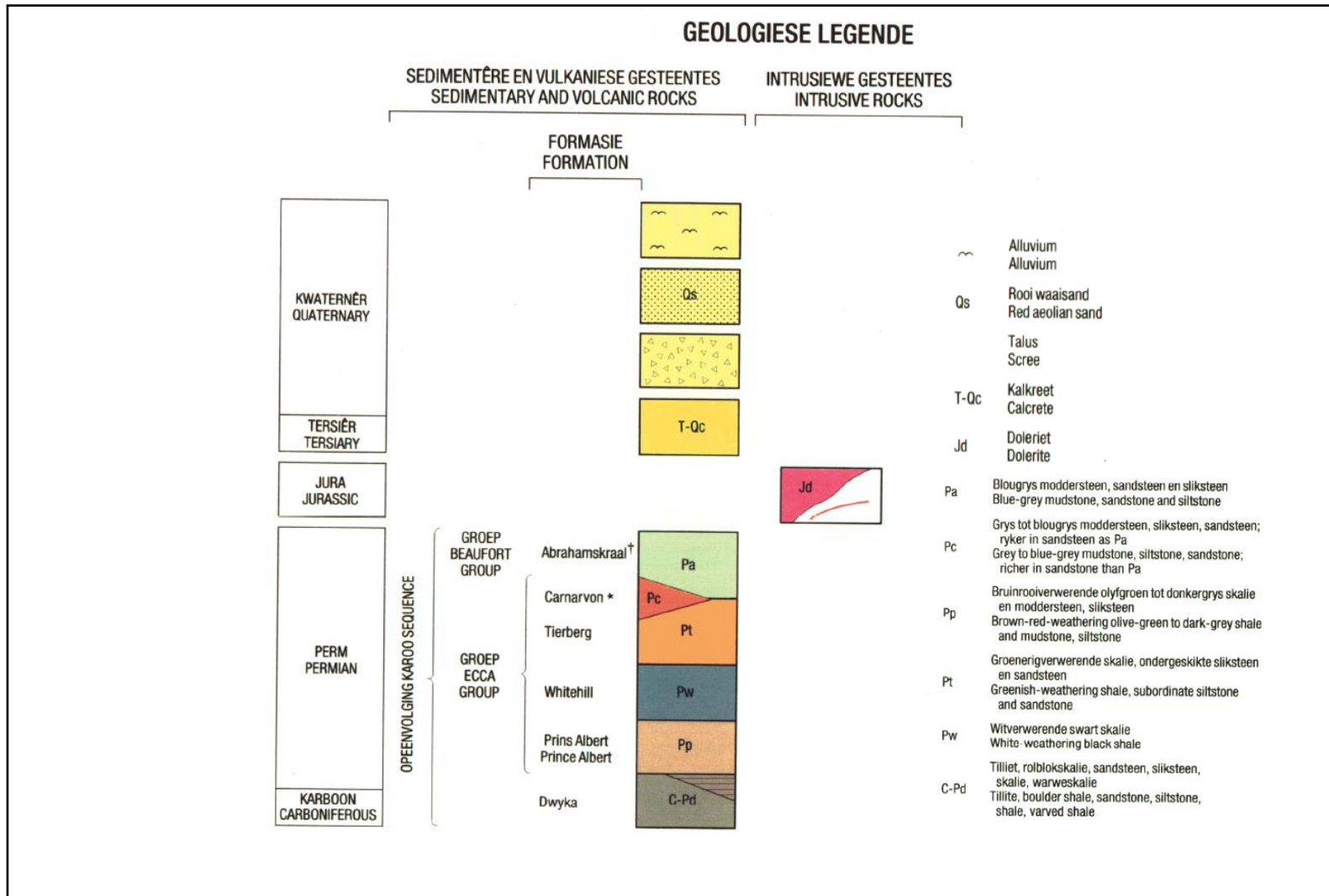


**Figure 4:** Extract of the 1:250 000 Geological map Britstown 3022 (1991) Geological Map (Council for Geosciences, Pretoria) indicating the proposed Soyuz 2 WEF in blue.

The proposed WEF development is underlain by the Late Caenozoic alluvium (yellow single bird figure), Late Tertiary to Quaternary calcretes (T-Qc), Jurassic Karoo dolerite (Jd, red), the Abrahamskraal Formation (Pa- light green) (Beaufort Group) as well as the Ecca Group of the Karoo Supergroup.



Table 2: Legend of the 1:250 000 Britstown 3022 (1991) Geological Map (Council for Geosciences, Pretoria).

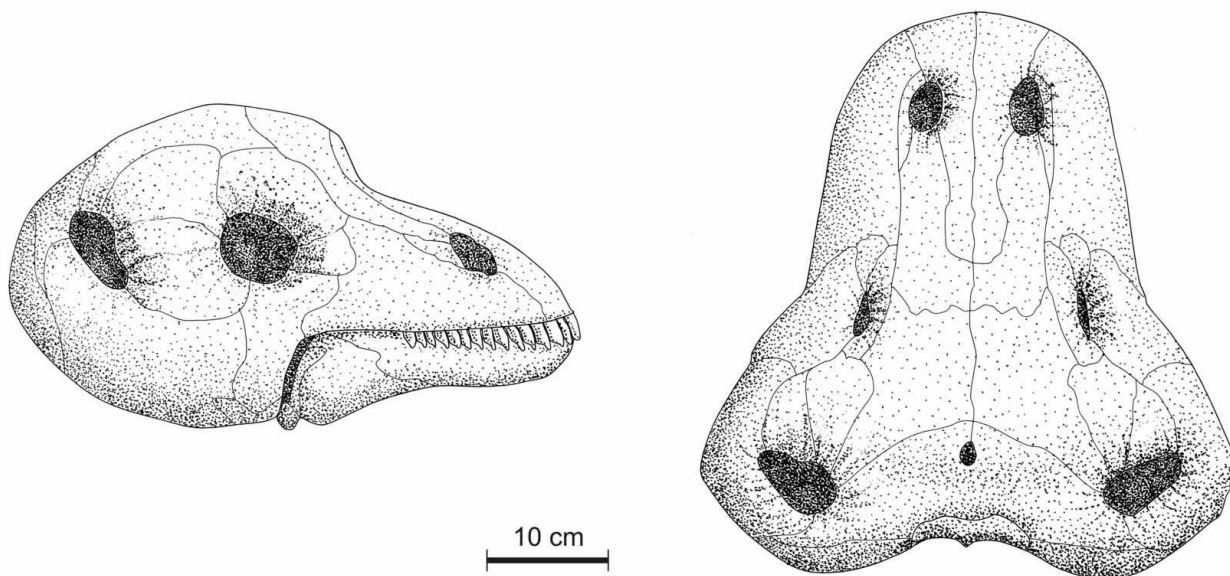




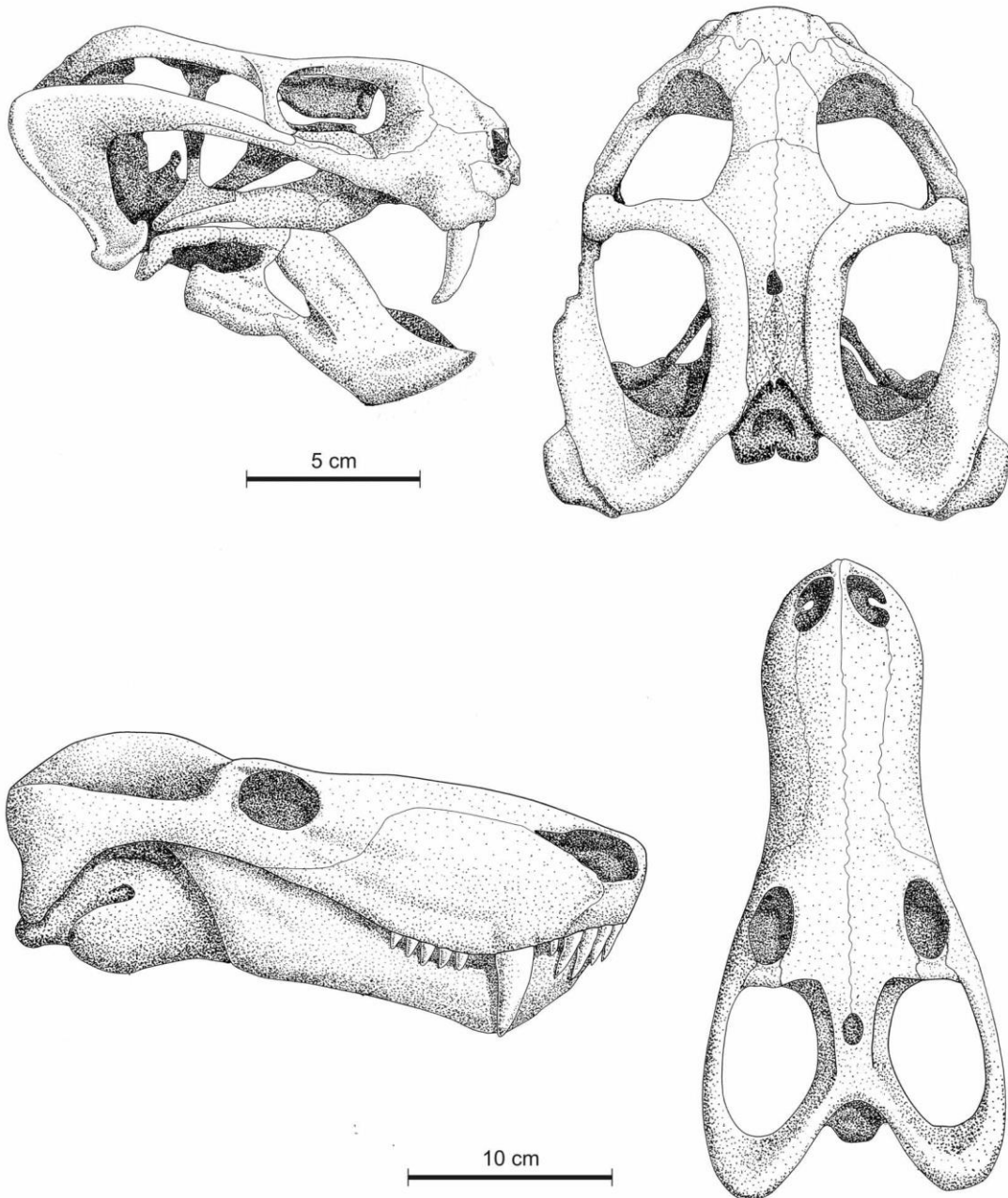
Age	Gp	West of 24° E	East of 24° E	Free State / KwaZulu-Natal	Vertebrate Assemblage Zones	Vertebrate Subzones			
JURASSIC	STORMBERG		Drakensberg Gp	Drakensberg Gp	Massospondylus				
			Clarens Fm	Clarens Fm					
			upper Elliot Fm	upper Elliot Fm					
			TRIASSIC	STORMBERG	lower Elliot Fm	lower Elliot Fm	Scalenodontoides		
Molteno Fm	Molteno Fm								
TARKASTAD Subgp	Burgersdorp Fm			Driekoppen Fm	Cynognathus	Cricodon-Ufudocyclops Trirachodon-Kannemeyeria Langbergia-Gargainia			
	Katberg Fm			Verkykerskop Fm	Lystrosaurus declivis				
	BEAUFORT			Teekloof Fm	Palingkloof M.	Normandem Fm	Daptocephalus	Lystrosaurus maccaigi-Moschorhinus	
					Elandsberg M.				Harrismith M.
					Ripplemead M.			Schoondraai M.	
Daggaboersnek M.		Rooinekke M.	Dicynodon-Theriognathus						
PERMIAN	BEAUFORT	Adelaide Subgp	Oudeberg M.	Volksrust Fm	Cistecephalus				
			Hoedemaker M.		Middleton Fm	Endothiodon	Tropidostoma-Gorgonops Lycosuchus-Eunosaurus		
			Poortjie M.			Tapinocephalus	Diictodon-Styraccephalus Eosimops-Glanosuchus		
			Abrahamskraal Fm		Koonap Fm	Eodicynodon			
			ECCA			Waterford Fm	Waterford Fm		
						Tierberg/Fort Brown	Fort Brown		

**Figure 5:** Vertebrate biozonation range chart for the Main Karoo Basin of South Africa.

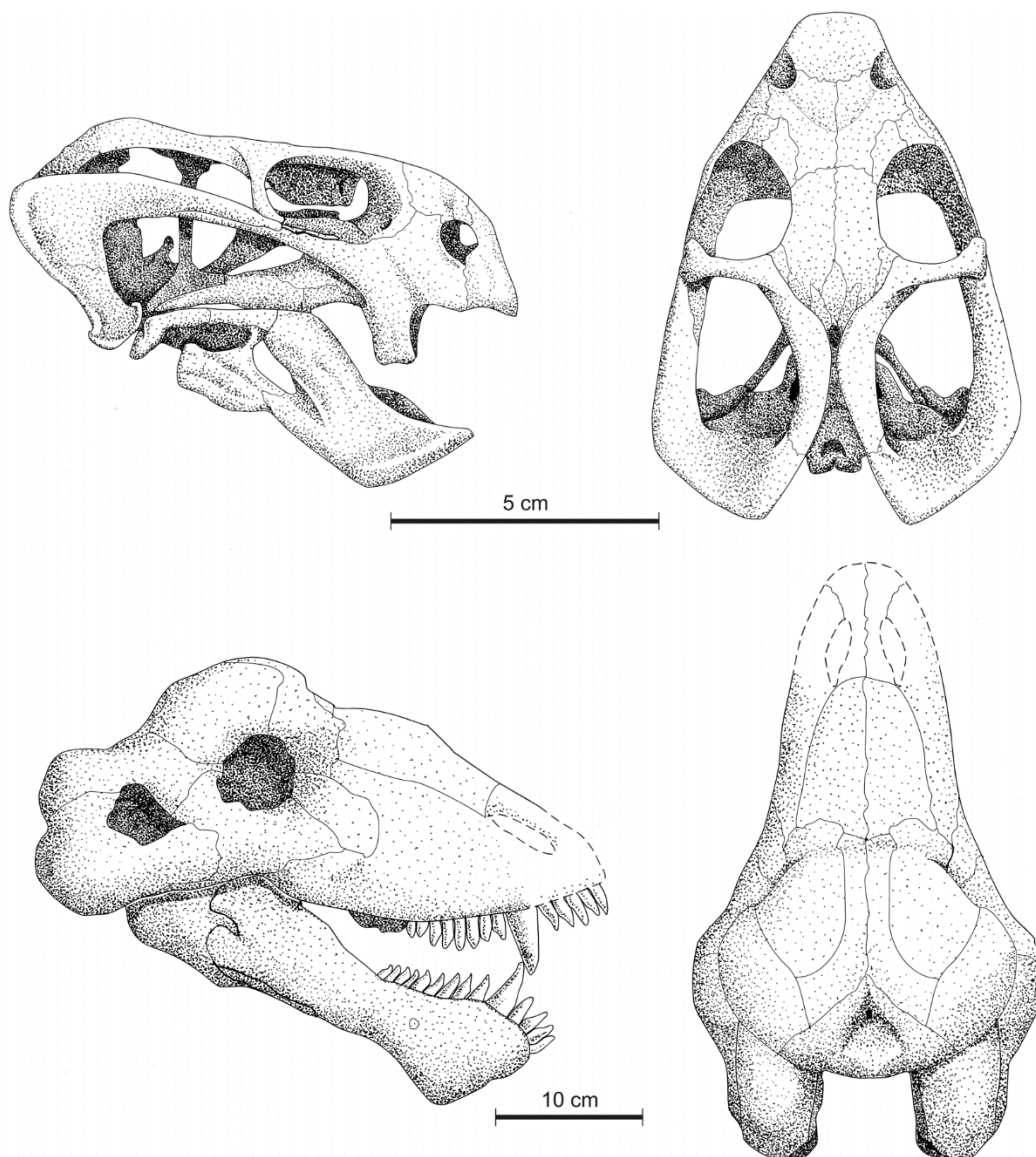
Solid lines indicate known ranges, wavy lines indicate unconformities. (PLYCSR=Pelycosauria and MAMMFMES+Mammaliaformes. Gp=group, Subgp-Subgroup, Fm=Formation, M=Member). The proposed SOYUZ 2 WEF are indicated by the red arrow (Image taken from Smith et al, 2020).



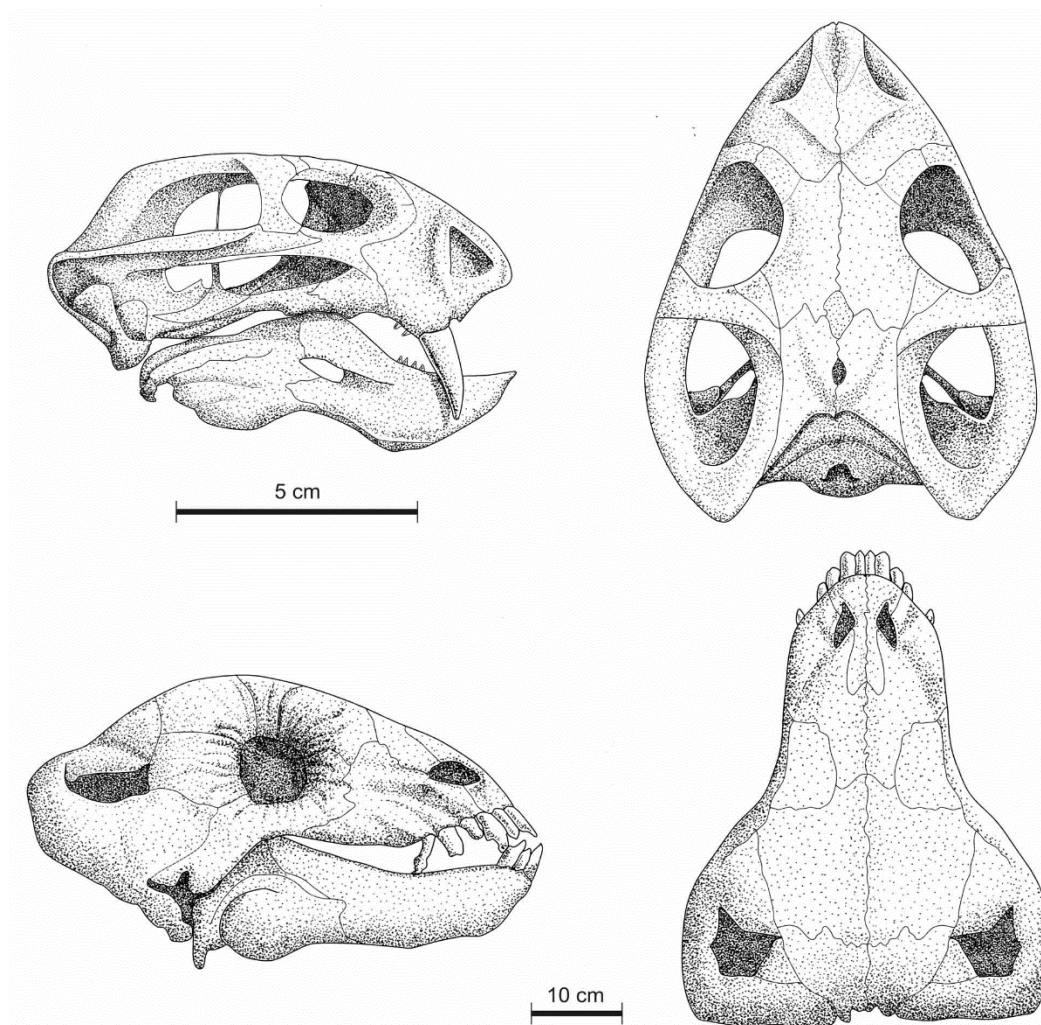
**Figure 6:** *Tapinocephalus atherstonei*, the index taxon of the *Tapinocephalus* Assemblage Zone, in lateral and dorsal view (Image taken from Day and Rubidge, 2020).



**Figure 7:** Lateral and dorsal view of the index taxa of the Eosimops - Glanosuchus Subzone in (top) *Eosimops newtoni*; (bottom) *Glanosuchus macrops* (Image taken from Day and Rubidge, 2020).



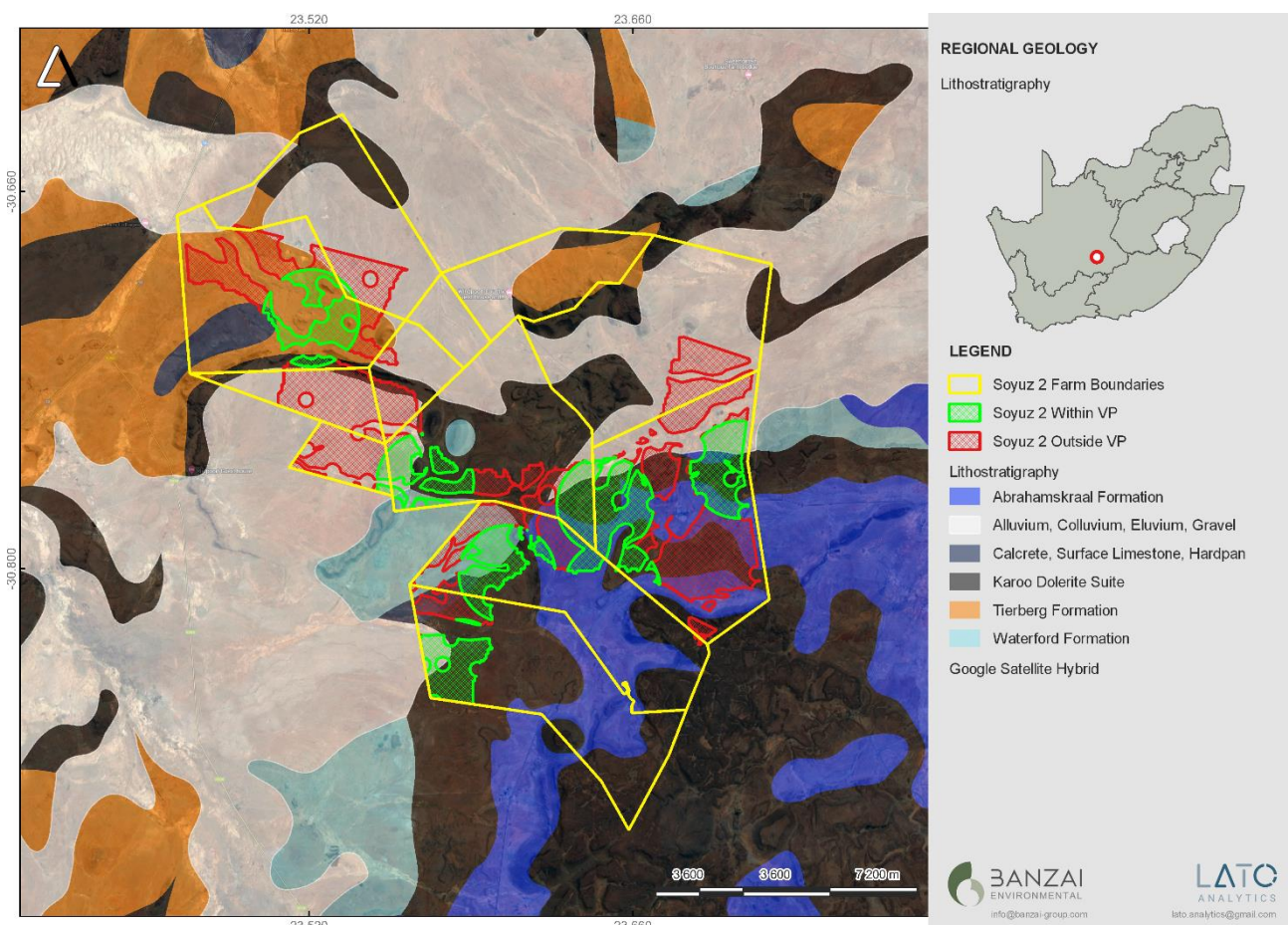
**Figure 8:** Illustration of the index taxa of the Diictodon - Styracocephalus Subzone in lateral and dorsal view. (top) *Diictodon feliceps*; (bottom) *Styracocephalus platyrhynchus* (Image taken from Day and Rubidge, 2020).



**Figure 9:** Lateral and dorsal views of biozone-defining fossils of the Eodicynodon Assemblage Zone: *Eodicynodon oosthuizeni* (top), *Tapinocaninus pamelaee* (bottom) (Image taken from Rubidge and Day, 2020).

Fossilized bones are generally encrusted with calcareous material and sometimes smaller fossils are entirely concealed in micritic nodules. In the northern margin of the basin the calcitic crusts is grey to greenish in colour while in the southern margin of the basin the nodules are very hard and often grey with orange weathering due to low-grade metamorphism related to the proximity of the Cape Fold Belt.

The lowermost biozone of the Beaufort Group occurs in the southwestern part of the main Karoo Basin and is known as the middle Permian Eodicynodon Assemblage Zone. In this biozone the basal therapsid *Eodicynodon* is the most abundant. The *Eodicynodon* AZ is 1100m at its thickest in the Prince Albert Road and thins to the west and east. This AZ documents the earliest middle Permian terrestrial environments of Gondwana. The sediments of this biozone were deposited on the southern shoreline of the Karoo Basin in a subaerial delta. This formed part of a large-scale fan system in the northeast and north within a second-order high-sand system tract.



**Figure 10:** Updated geology (Council for Geosciences, Pretoria) indicates that the proposed SOYUZ 2 WEF is underlain by alluvium, colluvium, elluvium, gravel, calcrete, surface limestone and Hardpan and Jurassic Dolerite as well as the Abrahamskraal Formation (Beaufort Group) and the Waterford Formation of the Eccca Group (Karoo Supergroup).

The 1:250 000 geological maps [Britstown 3022 (1991) and Victoria 3122 West (1989)] indicates that the development is underlain by the Carnarvon Formation of the Eccca Group. When this map (3022 Britstown) was published this Formation of the Eccca was not yet approved by SACS. However, updated geological maps (Council of Geosciences, Pretoria) (**Figure 10**) indicates that the proposed development is underlain by alluvium, colluvium, eluvium, and gravel; calcrete, surface limestones, Hardpan, and Jurassic Karoo Dolerite; the Abrahamskraal Formation as well as the Tierberg and Waterford Formations of the Eccca Group.

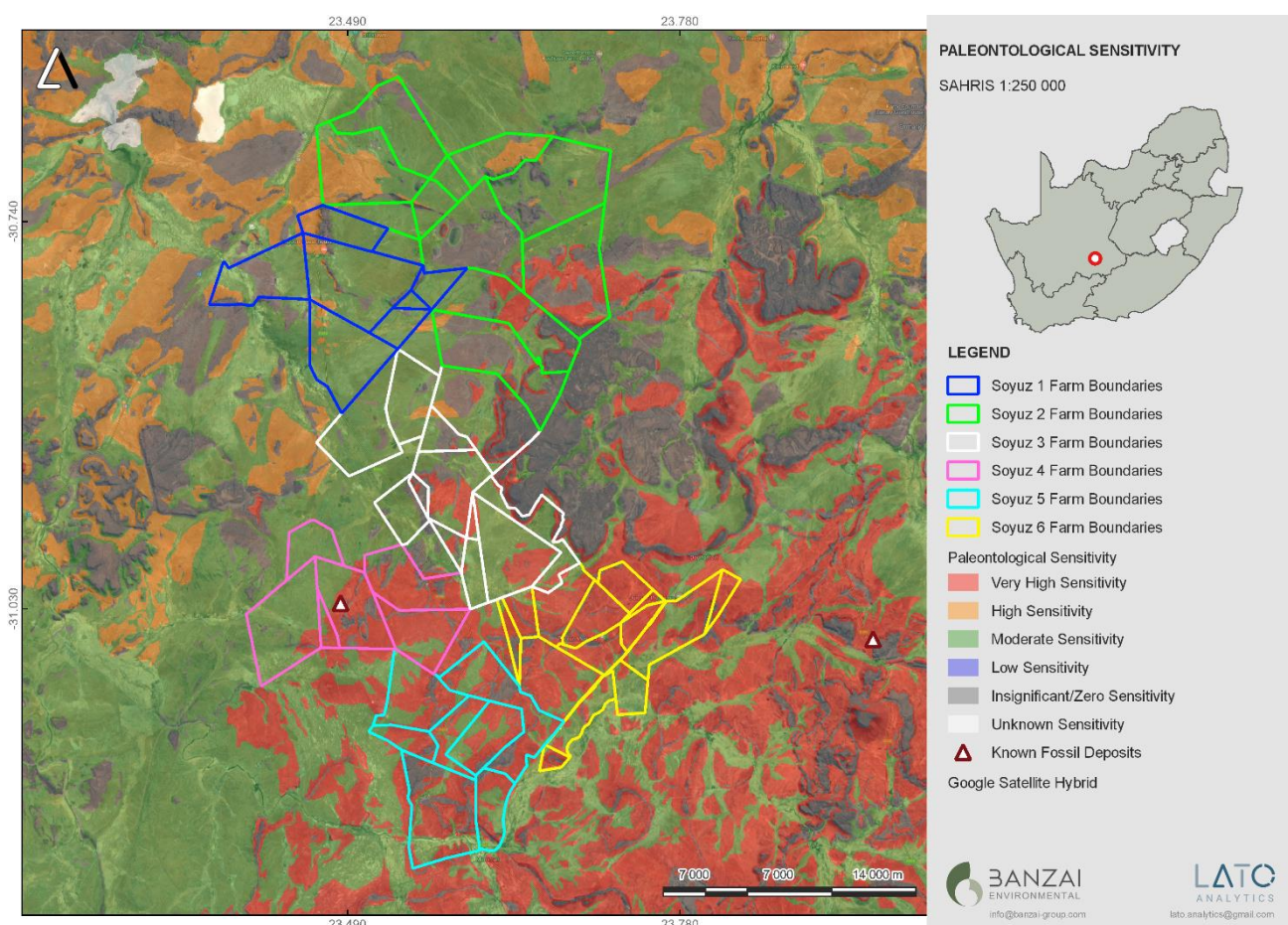
The Waterford Formation (**Figure 10**) of the Eccca Group is about 270 million years old and is a thick (500-770 m) deltaic deposit. The Beaufort- Eccca contact in the southern and western Karoo depicts a change from a subaqueous to a subaerial delta plain (Rubidge et al, 2000). This sandstone-rich, resistant-weathering Formation comprises of mudrock or clastic rhythmite units and very fine-grained, lithofeldspathic sandstones. Khaki to grey lithofeldspathic sandstones that may be speckled, while dark grey mudrocks are structured into broadly coarsening-upwards prograding cycles. Wave-ripple bedding planes are commonly present as well as ball-and





pillow structures. Trace fossils are common in this formation and consist of burrows, tubes, and trails. Fossil plants are represented by petrified wood and equisetaleans.

The majority of the Tierberg Formation (Ecca Group; Karoo Supergroup) comprises of well-laminated, dark grey to black shale (Johnson et al 2006). Some yellowish tuffaceous beds up to 10cm thick occur in the lower part of the succession along the western and northern margins of the Basin. Calcareous concretions are common towards the top of the formation. Clastic rhythmites occur at various levels in the sequence (Cole, 2005). This formation is considered to be a deep-water deposit associated with event beds. The Tierberg formation is known for its rare trace fossils assemblages. Vascular plants (including petrified wood) and palynomorphs of *Glossopteris* flora have been found while crustaceans, shelly marine invertebrates, insects, and fish fossils as well as microfossils have been identified.



**Figure 11:** Extract of the 1 in 250 000 SAHRIS PalaeoMap map (Council of Geosciences) indicating the WEF development in yellow. Fossils found near the SOYUZ 2 WEF project area are indicated by white triangles.

The SAHRIS Palaeosensitivity map (Figure 11) indicates that the SOYUZ 2 WEF development is underlain by sediments with a Very High (red), High (orange), Moderate (green) and Zero (grey) Palaeontological Sensitivity. Extensive research has been conducted in the Karoo Basin in the last decades and a National Palaeontological



database has been compiled (Nicolas, 2007). This National Palaeontology Database indicates that only two fossils have been found in the Britstown area and is indicated in Figure 11 by white triangles.

Table 3: Palaeontological Sensitivity according to the SAHRIS PalaeoMap (Almond et al, 2013; SAHRIS website)		
Colour	Sensitivity	Required Action
RED	VERY HIGH	Field assessment and protocol for finds is required
ORANGE/YELLOW	HIGH	Desktop study is required and based on the outcome of the desktop study; a field assessment is likely
GREEN	MODERATE	Desktop study is required
BLUE	LOW	No palaeontological studies are required however a protocol for finds is required
GREY	INSIGNIFICANT/ZERO	No palaeontological studies are required
WHITE/CLEAR	UNKNOWN	These areas will require a minimum of a desktop study. As more information comes to light, SAHRA will continue to populate the map.

## 6 GEOGRAPHICAL LOCATION OF THE SITE

Soyuz 2 and associated infrastructure is located approximately 23 km South East of Britstown within the Emthanjeni Local Municipality and the Pixley ka Seme District Municipality in the Northern Cape Province (Figure 1-3).

## 7 METHODS

The aim of a desktop study is to evaluate the possible risk to palaeontological heritage in the proposed development. This includes all trace fossils as well as all fossils in the proposed footprint. All possible information is consulted to compile a desktop study, and this includes the following: all Palaeontological Impact Assessment reports in the same area; aerial photos and Google Earth images, topographical as well as geological maps.

### 7.1 Assumptions and Limitations

The focal point of geological maps is the geology of the area and the sheet explanations of the Geological Maps were not meant to focus on palaeontological heritage. Many inaccessible regions of South Africa have never been reviewed by palaeontologists and data is generally based on aerial photographs alone. Locality and geological



information of museums and universities databases have not been kept up to date or data collected in the past have not always been accurately documented.

Areas located elsewhere that have similar Assemblage Zones are also used to provide information on the existence of fossils in an area which has not documented in the past. When using similar Assemblage Zones and geological formations for Desktop studies it is generally assumed that exposed fossil heritage is present within the footprint. A field-assessment will thus improve the accuracy of the desktop assessment and thus this study has been commissioned.

## **8 ADDITIONAL INFORMATION CONSULTED**

In compiling this report the following sources were consulted:

- Geological map 1:100 000, Geology of the Republic of South Africa (Visser 1984)
- Palaeontological Sensitivity Map on SAHRIS
- A Google Earth kmz files of the proposed development was obtained from CES – ENVIRONMENTAL AND SOCIAL ADVISORY SERVICES as well as background information.
- Topographic maps (1:50 000) of the 3022 Britstown area.
- 1:250 000 Britstown 3022 (1991) Geological map (Council of Geoscience, Pretoria)
- A 6- day overall site-specific field survey of the WEF Cluster was conducted on foot and by motor vehicle during October 2022.

## **9 SITE VISIT**

A 6- day overall site-specific field survey of the WEF Cluster was conducted on foot and by motor vehicle during October 2022. No fossiliferous outcrops were detected in the Soyuz 2 WEF footprint.



**Figure 12:** General view over the development indicates low-lying plains (bossieveld) underlain by sandy sediments and indicates an absence of bedrock exposures. Tertiary-Quaternary calcretes is present in the foreground.



**Figure 13:** General view over the development indicates low- lying plains (bossieveld) underlain by sandy sediments.



## 10 IMPACT ASSESSMENT METHODOLOGY

### 10.1 Impact Rating System

Impact assessment must take account of the nature, scale and duration of impacts on the environment whether such impacts are positive or negative. Each impact is also assessed according to the project phases:

- planning
- construction
- operation
- decommissioning

Where necessary, the proposal for mitigation or optimisation of an impact should be detailed. A brief discussion of the impact and the rationale behind the assessment of its significance should also be included. The rating system is applied to the potential impacts on the receiving environment and includes an objective evaluation of the mitigation of the impact. In assessing the significance of each impact, the following criteria is used:

Table 4: The rating system

NATURE		
The Nature of the Impact is the possible destruction of fossil heritage		
GEOGRAPHICAL EXTENT		
This is defined as the area over which the impact will be experienced.		
1	Site	The impact will only affect the site.
2	Local/district	Will affect the local area or district.
3	Province/region	Will affect the entire province or region.
4	International and National	Will affect the entire country.
PROBABILITY		
This describes the chance of occurrence of an impact.		
1	Unlikely	The chance of the impact occurring is extremely low (Less than a 25% chance of occurrence).



2	Possible	The impact may occur (Between a 25% to 50% chance of occurrence).
3	Probable	The impact will likely occur (Between a 50% to 75% chance of occurrence).
4	Definite	Impact will certainly occur (Greater than a 75% chance of occurrence).

**DURATION**

This describes the duration of the impacts. Duration indicates the lifetime of the impact as a result of the proposed activity.

1	Short term	The impact will either disappear with mitigation or will be mitigated through natural processes in a span shorter than the construction phase (0 – 1 years), or the impact will last for the period of a relatively short construction period and a limited recovery time after construction, thereafter it will be entirely negated (0 – 2 years).
2	Medium term	The impact will continue or last for some time after the construction phase but will be mitigated by direct human action or by natural processes thereafter (2 – 10 years).
3	Long term	The impact and its effects will continue or last for the entire operational life of the development, but will be mitigated by direct human action or by natural processes thereafter (10 – 30 years).
4	Permanent	The only class of impact that will be non-transitory. Mitigation either by man or natural process will not occur in such a way or such a time span that the impact can be considered indefinite.

**INTENSITY/ MAGNITUDE**

Describes the severity of an impact.

1	Low	Impact affects the quality, use and integrity of the system/component in a way that is barely perceptible.
2	Medium	Impact alters the quality, use and integrity of the system/component but system/component still



3		continues to function in a moderately modified way and maintains general integrity (some impact on integrity).
	High	Impact affects the continued viability of the system/component and the quality, use, integrity and functionality of the system or component is severely impaired and may temporarily cease. High costs of rehabilitation and remediation.
4	Very high	Impact affects the continued viability of the system/component and the quality, use, integrity and functionality of the system or component permanently ceases and is irreversibly impaired. Rehabilitation and remediation often impossible. If possible rehabilitation and remediation often unfeasible due to extremely high costs of rehabilitation and remediation.

**REVERSIBILITY**

This describes the degree to which an impact can be successfully reversed upon completion of the proposed activity.

1	Completely reversible	The impact is reversible with implementation of minor mitigation measures.
2	Partly reversible	The impact is partly reversible but more intense mitigation measures are required.
3	Barely reversible	The impact is unlikely to be reversed even with intense mitigation measures.
4	Irreversible	The impact is irreversible, and no mitigation measures exist.

**IRREPLACEABLE LOSS OF RESOURCES**

This describes the degree to which resources will be irreplaceably lost as a result of a proposed activity.

1	No loss of resource	The impact will not result in the loss of any resources.
2	Marginal loss of resource	The impact will result in marginal loss of resources.
3	Significant loss of resources	The impact will result in significant loss of resources.





4	Complete loss of resources	The impact is result in a complete loss of all resources.
<b>CUMULATIVE EFFECT</b>		
This describes the cumulative effect of the impacts. A cumulative impact is an effect which in itself may not be significant but may become significant if added to other existing or potential impacts emanating from other similar or diverse activities as a result of the project activity in question.		
1	Negligible cumulative impact	The impact would result in negligible to no cumulative effects.
2	Low cumulative impact	The impact would result in insignificant cumulative effects.
3	Medium cumulative impact	The impact would result in minor cumulative effects.
4	High cumulative impact	The impact would result in significant cumulative effects
<b>SIGNIFICANCE</b>		
Significance is determined through a synthesis of impact characteristics. Significance is an indication of the importance of the impact in terms of both physical extent and time scale, and therefore indicates the level of mitigation required. The calculation of the significance of an impact uses the following formula:  <b>(Extent + probability + reversibility + irreplaceability + duration + cumulative effect) x magnitude/intensity = X.</b>  The summation of the different criteria will produce a non-weighted value. By multiplying this value with the magnitude/intensity, the resultant value acquires a weighted characteristic which can be measured and assigned a significance rating.		
Points	Impact significance rating	Description
6 to 28	Negative low impact	The anticipated impact will have negligible negative effects and will require little to no mitigation.
6 to 28	Positive low impact	The anticipated impact will have minor positive effects.
29 to 50	Negative medium impact	The anticipated impact will have moderate negative effects and will require moderate mitigation measures.
29 to 50	Positive medium impact	The anticipated impact will have moderate positive effects.



51 to 73	Negative high impact	The anticipated impact will have significant effects and will require significant mitigation measures to achieve an acceptable level of impact.
51 to 73	Positive high impact	The anticipated impact will have significant positive effects.
74 to 96	Negative very high impact	The anticipated impact will have highly significant effects and are unlikely to be able to be mitigated adequately. These impacts could be considered "fatal flaws".
74 to 96	Positive very high impact	The anticipated impact will have highly significant positive

## 10.2 Summary of Impact Tables

Loss of fossil heritage will be a negative impact. Only the site will be affected by the proposed development. The expected duration of the impact is assessed as potentially permanent to long term. In the absence of mitigation procedures, the damage or destruction of any palaeontological materials will be permanent. Impacts on palaeontological heritage during the construction phase could potentially occur and are regarded as having a high probability. As fossil heritage will be destroyed the impact is irreversible. The significance of the impact occurring will be high pre-mitigation and low post-mitigation.

### Impact Summary

Impacts	Extent	Duration	Magnitude	Reversibility	Irreplaceable loss	Cumulative effect	Impact
<b>Pre-mitigation</b>	1	4	3	4	4	4	Negative High 48
<b>Post mitigation</b>	1	4	1	4	4	2	Negative Low 15



## 11 FINDINGS AND RECOMMENDATIONS

The Soyuz 2 WEF development is underlain by the Late Caenozoic alluvium, Late Tertiary to Quaternary calcretes, Jurassic Karoo dolerite, the Abrahamskraal Formation (Beaufort Group) as well as the Ecca Group of the Karoo Supergroup. Large areas are underlain by dykes and sills of Jurassic Dolerite in the center and eastern portion of the development. This is typical of this part of the basin and sediments of the surrounding Beaufort and Ecca Group have been baked, thus compromising the fossil heritage of the area through thermal metamorphism. According to the PalaeoMap on the South African Heritage Resources Information System (SAHRIS) database, the Palaeontological Sensitivity of the Late Caenozoic superficial deposits is Moderate, Late Tertiary to Quaternary calcretes is High, the Jurassic dolerite is Zero while that of the Adelaide Subgroup is Very High while that of the Ecca Group is High (Almond *et al*, 2013; SAHRIS website).

Extensive research and fossil collecting have been conducted by palaeontologists in the last few decades, however, the Britstown area have been largely neglected. A 6-day overall comprehensive site-specific field survey of the Soyuz WEF Cluster was conducted on foot and by motor vehicle in October 2022. In the area investigated no fossiliferous outcrops were recovered. This could be attributed to the dolerite intrusions that metamorphized potentially fossiliferous Beaufort sediments, low relief of the development as well as poor bedrock exposure and relative unfossiliferous superficial sediments. However, it must be emphasised that the presence of well-preserved fossils is not ruled out.

**A High Palaeontological Significance has been allocated for the construction phase of the WEF development pre-mitigation and a low significance post mitigation.** The construction phase will be the only development phase impacting Palaeontological Heritage and **no significant impacts are expected to impact the Operational and Decommissioning phases.** As the No-Go Alternative considers the option of 'do nothing' and maintaining the status quo, it will have a Neutral impact on the Palaeontological Heritage of the development. The **Cumulative impacts of the Soyuz 2 WEF development near Britstown is considered to be high pre- mitigation and Low post mitigation and falls within the acceptable limits for the project.** It is therefore considered that the proposed development will not lead to destructive impacts on the palaeontology of the area. **The construction of the development may thus be authorized in its whole extent, as the development footprint is not considered sensitive from a palaeontological point of view. It is thus recommended that no further palaeontological heritage studies, ground truthing or specialist mitigation are required pending the discovery of new fossil assemblages.**

### Recommendations:

- The ECO for this project must be informed that the Abrahamskraal Formation, Adelaide Subgroup, Beaufort Group, Karoo Supergroup) has a **Very High Palaeontological Sensitivity** while that of the Ecca Group of the Karoo Supergroup has a **High Palaeontological Sensitivity**.
- Basic training in identifying fossil heritage is recommended for the ECO and relevant staff. If any fossil remains or trace fossils are discovered during any phase of construction or operation, either on the



surface or exposed by excavations, the ECO in charge of this development should implement the **Chance find Protocol** immediately. These discoveries should be protected (if possible, *in situ*) and the ECO must report such discoveries to SAHRA (Contact details: SAHRA, 111 Harrington Street, Cape Town. PO Box 4637, Cape Town 8000, South Africa. Tel: 021 462 4502. Fax: +27 (0)21 462 4509. Web: [www.sahra.org.za](http://www.sahra.org.za)). Suitable mitigation (e.g., recording and collection) will consequently be undertaken by a palaeontologist.

- Before any fossil material can be collected from the development site, the specialist involved would need to apply for a collection permit from SAHRA. Fossil material must be housed in an official collection (museum or university), while all reports and fieldwork should meet the minimum standards for palaeontological impact studies proposed by SAHRA (2012).
- These recommendations should be incorporated into the Environmental Management Plan for the Soyuz 2 WEF.

## 12 CHANCE FINDS PROTOCOL

A following procedure will only be followed if fossils are uncovered during excavation.

### Legislation

Cultural Heritage in South Africa (includes all heritage resources) is protected by the **National Heritage Resources Act (Act 25 of 1999) (NHRA)**. According to Section 3 of the Act, all Heritage resources include **“all objects recovered from the soil or waters of South Africa, including archaeological and palaeontological objects and material, meteorites and rare geological specimens”**.

Palaeontological heritage is unique and non-renewable and is protected by the NHRA and are the property of the State. It is thus the responsibility of the State to manage and conserve fossils on behalf of the citizens of South Africa. Palaeontological resources may not be excavated, broken, moved, or destroyed by any development without prior assessment and without a permit from the relevant heritage resources authority as per section 35 of the NHRA.

A fossil is the naturally preserved remains (or traces) of plants or animals embedded in rock. These plants and animals lived in the geologic past millions of years ago. Fossils are extremely rare and irreplaceable. By studying fossils, it is possible to determine the environmental conditions that existed in a specific geographical area millions of years ago.

This informational document is intended for workmen and foremen on construction sites. It describes the actions to be taken when mining or construction activities accidentally uncovers fossil material.



It is the responsibility of the Environmental Site Officer (ESO) or site manager of the project to train the workmen and foremen in the procedure to follow when a fossil is accidentally uncovered. In the absence of the ESO, a member of the staff must be appointed to be responsible for the proper implementation of the chance find protocol as not to compromise the conservation of fossil material.

### Chance Find Procedure

If a chance find is made the person responsible for the find must immediately **stop working** and all work that could impact that finding must cease in the immediate vicinity of the find.

The person who made the find must immediately **report** the find to his/her direct supervisor which in turn must report the find to his/her manager and the ESO or site manager. The ESO or site manager must report the find to the relevant Heritage Agency (South African Heritage Research Agency, SAHRA). (Contact details: SAHRA, 111 Harrington Street, Cape Town. PO Box 4637, Cape Town 8000, South Africa. Tel: 021 462 4502. Fax: +27 (0)21 462 4509. Web: [www.sahra.org.za](http://www.sahra.org.za)). The information to the Heritage Agency must include photographs of the find, from various angles, as well as the GPS coordinates.

A preliminary report must be submitted to the Heritage Agency within **24 hours** of the find and must include the following: 1) date of the find; 2) a description of the discovery and a 3) description of the fossil and its context (depth and position of the fossil), GPS co-ordinates.

Photographs (the more the better) of the discovery must be of high quality, in focus, accompanied by a scale. It is also important to have photographs of the vertical section (side) where the fossil was found.

Upon receipt of the preliminary report, the Heritage Agency will inform the ESO (or site manager) whether a rescue excavation or rescue collection by a palaeontologist is necessary.

The site must be secured to protect it from any further damage. **No attempt** should be made to remove material from their environment. The exposed finds must be stabilized and covered by a plastic sheet or sand bags. The Heritage agency will also be able to advise on the most suitable method of protection of the find.

In the event that the fossil cannot be stabilized the fossil may be collected with extreme care by the ESO (site manager). Fossils finds must be stored in tissue paper and in an appropriate box while due care must be taken to remove all fossil material from the rescue site.

Once Heritage Agency has issued the written authorization, the developer may continue with the development on the affected area.

## 13 BIBLIOGRAPHY

Abdala, F., Dias-da-Silva, S. and Cisneros, J.C., 2002. First record of non-mammalian cynodonts (Therapsida) in the Sanga do Cabral Formation (Early Triassic) of southern Brazil. *Palaeontologia africana*, 38, 93-98.



- Abdala, F., Kammerer, C.F., Day, M.O., Jirah, S. and Rubidge, B.S., 2014. Adult morphology of the therapsid Simorhinella baini from the middle Permian of South Africa and the taxonomy, paleobiogeography, and temporal distribution of the Lycosuchidae from the Middle Permian of South Africa. *Journal of Paleontology*, 88, 1139-1153.
- Almond, J 2020b. Proposed Redcap Nuweveld West Wind Farm, Beaufort West Local Municipality, Central Karoo District Municipality, Western Cape. Palaeontological heritage assessment: desktop and field-based report, 116 pp. Natura Viva cc, Cape Town.
- Almond, J. 2020a. Proposed Redcap Nuweveld North Wind Farm, Beaufort West Local Municipality, Central Karoo District Municipality, Western Cape. Palaeontological heritage assessment: desktop and field-based report, 116 pp. Natura Viva cc, Cape Town.
- Almond, J. 2020c. Proposed Redcap Nuweveld East Wind Farm, Beaufort West Local Municipality, Central Karoo District Municipality, Western Cape. Palaeontological heritage assessment: desktop and field-based report, 115 pp. Natura Viva cc, Cape Town.
- Almond, J. 2021. Grid connection for the proposed Redcap Nuweveld Wind Farms, Beaufort West Local Municipality, Central Karoo District Municipality, Western Cape. Palaeontological heritage assessment: desktop and field-based report, 101 pp. Natura Viva cc, Cape Town.
- Almond, J. 2022a. Proposed Hoogland Wind Farms and Grid Connection project. Northern cluster: Hoogland 3 Wind farm, Hoogland 4 Wind Farm and associated Hoogland Southern Grid Connection, Western Cape Province. Palaeontological heritage report, 110 pp. Natura Viva cc, Cape Town.
- Almond, J. 2022b. Proposed Hoogland Wind Farms and Grid Connection project. Southern cluster: Hoogland 3 Wind farm, Hoogland 4 Wind Farm and associated Hoogland Southern Grid Connection, Western Cape Province. Palaeontological heritage report, 112 pp. Natura Viva cc, Cape Town.
- Almond, J., Pether, J, And Groenewald, G. 2013. South African National Fossil Sensitivity Map. SAHRA and Council for Geosciences. Schweitzer *et al.* (1995) pp p288.
- Almond, J.E. & Pether, J. 2009. Palaeontological heritage of the Northern Cape. Interim SAHRA technical report, 124 pp. Natura Viva cc., Cape Town.
- Backwell, L.R., T. S. McCarthy, L. Wadley, Z. Henderson, C. M. Steininger, B. De Klerk, M. Barré, M. Lamothe, B. M. Chase, S. Woodbourne, G.J. Susino, M.K. Bamford, C. Sievers, J.S. Brink, L. Rossouw, L. Pollarolo, G. Trower, L. Scott, F. D'errico. 2014. Multiproxy record of late Quaternary climate change and Middle Stone Age human occupation at Wonderkrater, South Africa. *Quaternary Science Reviews*. 99: 42–59.
- Barnosky, A.D. 2005. Effects of Quaternary Climatic Change on Speciation in Mammals. *Journal of Mammalian Evolution*. 12:247-264
- Bordy, E.M., Sztanó, O., Rubidge, B.S. and Bumby, A., 2011. Early Triassic vertebrate burrows from the Katberg Formation of the south-western Karoo Basin, South Africa. *Lethaia*, 44, 33-45.
- Botha, J., and Smith, R.M.H., 2006. Rapid vertebrate recuperation in the Karoo Basin of South Africa following the end-Permian extinction. *Journal of African Earth Sciences*, 45, 502-514.
- Botha, J., and Smith, R.M.H., 2007. *Lystrosaurus* species composition across the Permo-Triassic boundary of South Africa. *Lethaia*, 40, 125-137.



- Botha, J., Huttenlocker, A.K., Smith, R.M.H., Prevec, R., Viglietti, P. and Modesto, S., 2020. New geochemical and palaeontological data from the Permo-Triassic boundary in the South African Karoo Basin test the synchrony of terrestrial and marine extinctions. *Palaeogeography, Palaeoclimatology, Palaeoecology*. DOI: 10.1016/j.palaeo.2019.109467
- Botha, J., 2020. Biostratigraphy of the *Lystrosaurus declivis* Assemblage Zone (Beaufort Group, Karoo Supergroup), South Africa. *South African Journal of Geology*: 123(2):207-216.
- Botha-Brink, J., 2017. Burrowing in *Lystrosaurus*: preadaptation to a post-extinction environment? *Journal of Vertebrate Paleontology*, 37, (5): e1365080.
- Brink, J.S. 2012. The post-1.0 Ma evolution of large mammal endemism in southern Africa in relation to East Africa and subsequent biogeographic isolation of the Cape coastal region. *Quaternary International* vol. 279–280: 69.
- Brink, J.S. 2016. Faunal evidence for mid- and late Quaternary environmental change in southern Africa. In: Knight, J. and Grab, S.W. (eds) *Quaternary environmental change in southern Africa: physical and human dimensions*. Cambridge University Press, pp. 286-307
- Broom, R., 1906. On the Permian and Triassic faunas of South Africa. *Geological Magazine*, 5, 29-30.
- Cole, D.I. and Wipplinger, P.E., 2001. Sedimentology and molybdenum potential of the Beaufort Group in the main Karoo basin, South Africa. *Memoir of the Council for Geoscience, Pretoria*, 80, 225pp.
- Cole, D.I., Johnson, M.R. and Day, M.O., 2016. Lithostratigraphy of the Abrahamskraal Formation (Karoo Supergroup), South Africa. *South African Journal of Geology*, 119, 415-424
- Damiani, R., Modesto, S., Yates, A. and Neveling, J., 2003. Earliest evidence of cynodont burrowing. *Proceedings of the Royal Society London B*, 270, 1747-1751.
- Damiani, R.J., Neveling, J., Hancox, P.J. and Rubidge B.S., 2000. First trematosaurid temnospondyl from the *Lystrosaurus* Assemblage Zone of South Africa and its biostratigraphic implications. *Geological Magazine* 137, 659-665.
- Day, M.O. and Rubidge, B.S., 2014. A brief lithostratigraphic review of the Abrahamskraal and Koonap formations of the Beaufort Group, South Africa: Towards a basin-wide stratigraphic scheme for the Middle Permian Karoo. *Journal of African Earth Sciences*, 100, 227-242.
- Day, M.O. and Rubidge, B.S., 2020. Biostratigraphy of the *Tapinocephalus* Assemblage Zone (Beaufort Group, Karoo Supergroup), South Africa. *South African Journal of Geology* 123:149-164.
- Day, M.O., 2013. Middle Permian continental biodiversity change as reflected in the Beaufort Group of South Africa: a bio- and lithostratigraphic review of the *Eodicynodon*, *Tapinocephalus* and *Priesterognathus* assemblage zones. Unpublished Ph.D. thesis, University of the Witwatersrand, Johannesburg, 387pp.
- Day, M.O., Benson, B.J., Kammerer, C.F. and Rubidge, B.S., 2018. Evolutionary rates of mid-Permian tetrapods from South Africa and the role of temporal resolution in turnover reconstruction. *Paleobiology*, 44, 347-367.
- Day, M.O., Ramezani, J., Bowring, S.A., Sadler, P.M., Erwin, D.H., Abdala, F. and Rubidge, B.S., 2015. When and how did the terrestrial mid-Permian mass extinction occur? Evidence from the tetrapod record of the Karoo Basin, South Africa. *Proceedings of the Royal Society B: Biological Sciences*, 282, 20150834.
- De Wit, M.C.J., Marshall, T.R. & Partridge, T.C. 2000. Fluvial deposits and drainage evolution. In: Partridge, T.C. & Maud, R.R. (Eds.) *The Cenozoic of southern Africa*, pp.55-72. Oxford University Press, Oxford.



- Dingle, R.V., Siesser, W.G. & Newton, A.R. 1983. Mesozoic and Tertiary geology of southern Africa. viii + 375 pp. Balkema, Rotterdam.
- Du Toit, A.L., 1917. The geology of part of the Transkei. Explanation of Cape Sheet 27 (Maclear – Umtata). Geological Survey of South Africa, 32pp.
- Du Toit, A.L., 1918. The zones of the Karoo System and their distribution. Proceedings of the Geological Society of South Africa, 21, 17-37.
- Duncan, R.A., Hooper, P.R., Rehacek, J., Marsh J.S. and Duncan, A.R., 1997. The timing and duration of the Karoo igneous event, southern Gondwana. *Journal of Geophysical Research*, 102, 18127-18138.
- Eales, H.V., Marsh, J.S. and Cox, K.G. (1984). The Karoo Igneous Province: an introduction. In: Erlank, A.J. (Ed.), *Petrogenesis of the Volcanic Rocks of the Karoo Province*. Spec. Publ. Geol. Soc. S. Afr., 13, 1–26
- Fernandez, V., Abdala, F., Carlson, K.J., Cook, D.C., Rubidge, B.S., Yates, A. and Tafforeau, P., 2013. Synchrotron reveals Early Triassic odd couple: Injured amphibian and aestivating therapsid share burrow. *PLoS ONE* 8, e64978. doi: 10.1371/journal.pone.0064978.
- Gastaldo, R.A., Kamo, S.L., Neveling, J., Geissman, W., Looy, C.V. and Martini, A.M., 2020. The base of the Lystrosaurus Assemblage Zone, Karoo Basin, predates the end-Permian marine extinction. *Nature Communications* 11, 1428. doi.org/10.1038/s41467-020-15243-7
- Groenewald, D.P., Day, M.O. and Rubidge, B.S., 2019. Vertebrate assemblages from the north-central Main Karoo Basin, South Africa, and their implications for mid-Permian biogeography. *Lethaia*, (Early View). <https://doi.org/10.1111/let.12326>
- Groenewald, G.H. and Kitching, J.W., 1995. Biostratigraphy of the Lystrosaurus Assemblage Zone. *South African Committee for Stratigraphy. Biostratigraphic Series* 1, 35-39.
- Hunter, D.R., Johnson, M.R., Anhaeusser, C. R. and Thomas, R.J. 2006. Introduction. (In: Johnson, M.R., Anhaeusser, C.R. and Thomas, R.J. (Eds), *The Geology of South Africa*. Geological Society of South Africa, Johannesburg/Council for Geoscience, Pretoria, 585-604.)
- Jirah, S. and Rubidge, B.S., 2014. Refined stratigraphy of the Middle Permian Abrahamskraal Formation (Beaufort Group) in the southern Karoo Basin. *Journal of African Earth Sciences*, 100, 121-135.
- JOHNSON, M.R., 1989. Paleogeographic significance of the oriented calcareous concretions in the Triassic Katberg Formation, South Africa. *J. Sed. Petrol.*, 59,1008-1010.
- Johnson, M.R., Visser, J.N.J., *et al.* 2006. Sedimentary rocks of the Karoo Supergroup In Johnson, M.R., Anhaeusser, C.R. & Thomas, R.J. (eds). *The geology of South Africa*. 691 pp. Geological Society of South Africa, Johannesburg and Council for Geoscience, Pretoria.
- Kammerer, C.F., 2009. Cranial disparity in the non-mammalian Synapsida. Unpublished Ph.D. thesis, University of Chicago, Chicago, 622pp.
- Kammerer, C.F., 2010. Systematics of the Anteosauria (Therapsida: Dinocephalia). *Journal of Systematic Palaeontology*, 9, 261-304.
- Kammerer, C.F., Angielczyk, K.D. and Fröbisch, J., 2011. A comprehensive taxonomic revision of Dicynodon (Therapsida, Anomodontia) and its implications for dicynodont phylogeny, biogeography, and biostratigraphy. *Journal of Vertebrate Paleontology*, 31, 1-158.





- Kammerer, C.F., Smith, R.M.H., Day, M.O. and Rubidge, B.S., 2015. New information on the morphology and stratigraphic range of the mid-Permian gorgonopsian *Eriphostoma microdon* Broom, 1911. *Papers in Palaeontology*, 1, 201-221.
- Kent, L. E., 1980. Part 1: Lithostratigraphy of the Republic of South Africa, South West Africa/Namibia and the Republics of Bophuthatswana, Transkei, and Venda. SACS, Council for Geosciences.
- Keyser, A.W., 1979. A review of the biozonation of the Beaufort Group in the Karoo basin of South Africa. *Geological Society of South Africa, Abstracts 1979 Geological Congress 2*, 13-31.
- Kitching, J.W., 1970. A short review of the Beaufort zoning in South Africa. In: S.H. Haughton (Editor), *I.U.G.S., 2nd Gondwana Symposium Proceedings and Papers*, 309-312.
- Kitching, J.W., 1977. The distribution of the Karroo vertebrate fauna. *Bernard Price Institute for Palaeontological Research Memoir 1*, 1-131.
- Kitching, J.W., Collinson, J.W., Elliot, D.H. and Colbert, E.H., 1972. *Lystrosaurus* Zone (Triassic) fauna from Antarctica. *Science*, 175, 524-527.
- Klein, R.G. 1984. The large mammals of southern Africa: Late Pliocene to Recent. In: Klein, R.G. (Ed.) *Southern African prehistory and paleoenvironments*, pp 107-146. Balkema, Rotterdam.
- Lewis, Patrick J.; Brink, James S.; Kennedy, Alicia M.; Campbell, Timothy L. (2011). "Examination of the Florisbad microvertebrates". *South African Journal of Science*. 107(7/8).
- Lucas, S.G., 1998. Global Triassic tetrapod biostratigraphy and biochronology. *Palaeogeography, Palaeoclimatology, Palaeoecology*, 143, 347-384.
- MacRae, C. 1999. *Life etched in stone. Fossils of South Africa*. 305 pp. The Geological Society of South Africa, Johannesburg.
- Marchetti, L., Klein, H., Buchwitz, M., Ronchi, A., Smith, R.M.H., De Klerk, E., Sciscio, L. and Groenewald, G., 2019. Ichnoassociations of Permian and Triassic tetrapod footprints in the Karoo Basin of South Africa. *Gondwana Research* 72,139-168.
- Mason, R., Rubidge, B. and Hancox, J., 2015. Terrestrial vertebrate colonisation and the Ecca-Beaufort boundary in the southeastern main Karoo Basin, South Africa: implications for Permian Basin evolution. *South African Journal of Geology*. 118, 145-156.
- Maud, R. 2012. Macroscale Geomorphic Evolution. (In Holmes, P. and Meadows, M. *Southern Africa Geomorphology, New trends and new directions*. Bloemfontein: Sun Press. p. 7- 21)
- McCarthy, T. & Rubidge, B. 2005. *The story of Earth and life: a southern African perspective on a 4.6-billion-year journey*. 334pp. Struik, Cape Town
- Michaelsen, P., 2002. Mass extinction of peat-forming plants and the effect on fluvial styles across the Permian-Triassic boundary, northern Bowen Basin, Australia, *Palaeogeography Palaeoclimatology Palaeoecology*, 179, 173-188.
- Modesto, S.P. and Botha-Brink, J., 2010. A burrow cast with *Lystrosaurus* skeletal remains from the Lower Triassic of South Africa. *Palaios*, 25, 274-281.
- Neveling, J., 2004. Stratigraphic and sedimentological investigation of the contact between the *Lystrosaurus* and *Cynognathus* Assemblage Zones (Beaufort Group: Karoo Supergroup). *Council for Geoscience Bulletin 137*, 1-165.



- Neveling, J., Hancox, P.J. and Rubidge, B.S., 2004. Biostratigraphy of the lower Burgersdorp Formation (Beaufort Group; Karoo Supergroup) of South Africa – implications for the stratigraphic ranges of Early Triassic tetrapods. *Palaeontologia africana*, 41, 81-87.
- Nicolas, M.V.M., 2007. Tetrapod Biodiversity through the Permo Triassic Beaufort Group (Karoo Supergroup) of South Africa. Unpublished PhD thesis, University of the Witwatersrand, Johannesburg. 356pp
- Pace, D.W., Gastaldo, R.A. and Neveling, J., 2009. Early Triassic aggregational and degradational landscapes of the Karoo Basin and evidence for climate oscillation following the P–Tr Event. *Journal of Sedimentary Research*, 79, 316-331.
- Paiva, F., 2015. Fluvial facies architecture and provenance history of the Abrahamskraal-Teekloof Formation transition (Lower Beaufort Group) in the main Karoo Basin. Unpublished M.Sc. dissertation, University of Cape Town, Cape Town, 98pp.
- palaeogeography of the midcontinent. *Journal of Sedimentary Research*, 83, 825-846.
- Partridge, T.C. & Scott, L. 2000. Lakes and pans. In: Partridge, T.C. & Maud, R.R. (Eds.) *The Cenozoic of southern Africa*, pp.145 - 161. Oxford University Press, Oxford.
- Partridge, T.C., Botha, G.A. & Haddon, I.G. 2006. Cenozoic deposits of the interior. In: Johnson, M.R., Anhaeusser, C.R. & Thomas, R.J. (Eds.) *The geology of South Africa*, pp. 585-604. Geological Society of South Africa, Marshalltown.
- Rossouw, P.J. and De Villiers, J., 1953. *The Geology of the Merweville area, Cape Province: An Explanation of sheet 198 (Merweville)*. The Government Printer, Pretoria.
- Rubidge B.S., 1995 Biostratigraphy of the Beaufort Group (Karoo Supergroup). *South African Committee for Stratigraphy Biostratigraphic Series 1: 1-46* Pretoria South African Committee for Stratigraphy and Biostratigraphy.
- Rubidge BS, Hancox PJ, Catuneanu O. 2000. Sequence analysis of the Ecca- Beaufort contact in the southern Karoo of South Africa. *S. Afr. J. Geol.*;103:81–96. <http://dx.doi.org/10.2113/103.1.81>
- Rubidge BS. 1987. South Africa's oldest land-living reptiles from the Ecca- Beaufort transition in the southern Karoo. *S. Afr. J. Sci.* 83:165–166.
- Rubidge, B.S., 1990. A new vertebrate biozone at the base of the Beaufort Group, Karoo sequence (South Africa). *Palaeontologia africana*, 27, 17-20.
- Rubidge, B.S., and Day, M.O. 2020. Biostratigraphy of the Eodicynodon Assemblage Zone (Beaufort Group, Karoo Supergroup), South Africa. *South African Journal of Geology* 123:141-148.
- Rubidge, B.S., Hancox, P.J. and Catuneanu, O., 2000. Sequence analysis of the Ecca-Beaufort contact in the southern Karoo of South Africa. *South African Journal of Geology*, 103, 81-96.
- SAHRA, 2012. Minimum standards: palaeontological component of heritage impact assessment reports, 15 pp. South African Heritage Resources Agency, Cape Town.
- Scott, L. & J.S. Brink. 1992. Quaternary palynology, palaeontology and palaeoenvironments in central South Africa. *South African Geographer* 19: 22-34.
- Smith, A.M, Zawada, P K. 1988. The Ecca-Beaufort transition zone near Philipstown, Cape Province: A marine shelf sequence. *S. Afr. J. Geol.* 91:75–82.



- Smith R.M.H., 1990. A review of stratigraphy and sedimentary environments in the Karoo Basin of South Africa. *Journal of African Earth Sciences*, 10, 117-137
- Smith, R.M.H. and Botha-Brink, J., 2011. Anatomy of an extinction: End-Permian drought induced die-off in the Karoo Basin, South Africa. Abstracts SVP Annual Meeting Las Vegas *Journal Vertebrate Palaeontology*, SVP Program and Abstracts Book, 2011, 196.
- Smith, R.M.H. and Botha-Brink, J., 2014. Anatomy of an extinction: Sedimentological and taphonomic evidence for drought-induced die-offs during the Permo-Triassic mass extinction in the main Karoo Basin, South Africa. *Palaeogeography, Palaeoclimatology, Palaeoecology*, 396, 99-118.
- Smith, R.M.H. and Keyser, A.W., 1995. Biostratigraphy of the *Tapinocephalus* Assemblage Zone. 8-12. In: B.S. Rubidge (Editor), *Biostratigraphic Series, Biostratigraphy of the Beaufort Group (Karoo Supergroup)*. South African Committee for Stratigraphy *Biostratigraphic Series*, 1, Council for Geoscience, Pretoria, 46pp
- Smith, R.M.H. and Keyser, A.W., 1995a. Biostratigraphy of the *Tapinocephalus* Assemblage Zone. In: B.S. Rubidge, (Editor), *Biostratigraphy of the Beaufort Group (Karoo Supergroup)*. South African Committee for Stratigraphy, *Biostratigraphic Series*, Council for Geoscience, South Africa, 1, 8-12
- Smith, R.M.H. and Ward, P.D., 2001. Pattern of vertebrate extinctions across an event bed at the Permian–Triassic boundary in the Karoo Basin of South Africa. *Geological Society of America Bulletin*, 29, 1147-1150.
- Smith, R.M.H., 1990. A review of stratigraphy and sedimentary environments of the Karoo Basin of South Africa. *Journal of African Earth Sciences*, 10, 117-137.
- Smith, R.M.H., 1993. Sedimentology and Ichnology of Floodplain Paleosurfaces in the Beaufort Group (Late-Permian), Karoo Sequence, South Africa. *PALAIOS*, 8, 339-357.
- Smith, R.M.H., 1995. Changing fluvial environments across the Permian–Triassic boundary in the Karoo Basin, South Africa, and possible causes of the extinctions. *Palaeogeography, Palaeoclimatology, Palaeoecology*, 117, 81-104.
- Smith, R.M.H., 1995. Changing fluvial environments across the Permian–Triassic boundary in the Karoo Basin, South Africa, and possible causes of the extinctions. *Palaeogeography, Palaeoclimatology, Palaeoecology*, 117, 81-104.
- Smith, R.M.H., Rubidge, B.S. and van der Walt, M., 2012. Therapsid biodiversity patterns and paleoenvironments of the Karoo Basin, South Africa. In: A. Chinsamy (Editor), *The forerunners of mammals: radiation, histology and biology*. Indiana University Press, Bloomington, 31-62.
- Smith, R.M.H., Rubidge, B.S., Day, M.O., Botha; J. 2020. Introduction to the tetrapod biozonation of the Karoo Supergroup. *South African Journal of Geology* 123 (2): 131–140. Doi: <https://doi.org/10.25131/sajg.123.0009>.
- Tooth, S. Brandt, D., Hancox P.J. And McCarthy, T. S. 2004. Geological controls on alluvial river behaviour: a comparative study of three rivers in the South African Highveld. *Journal of African Earth Sciences*, 38(2004): 79-97, 15 Aug.
- Viglietti P.A., Smith R.M.H. and Compton J.S., 2013. Origin and palaeoenvironmental significance of *Lystrosaurus* bonebeds in the earliest Triassic Karoo Basin, South Africa. *Palaeogeography, Palaeoecology, Palaeoclimatology*, 392, 9-21.



Viglietti P.A.,2020. The Daptocephalus Assemblage Zone (Lopingian), South Africa: A proposed biostratigraphy based on a new compilation of stratigraphic ranges. *South African Journal of Geology*123 (2): 191-206. DOI: 10.1016/j.jafrearsci.2015.10.011

Visser JNJ, Looek JC. 1974. The nature of the Eccca-Beaufort transition in the western and central Orange Free State. *Trans. Geol. Soc. S Afr.* 81:185– 191.

Visser, D.J.L. (ed) 1984. Geological Map of South Africa 1:100 000. South African Committee for Stratigraphy, Council for Geoscience, Pretoria.

Visser, D.J.L. (ed) 1989. Toeligting: Geologiese kaart (1:100 000). Die Geologie van die Republieke van Suid Afrika, Transkei, Bophuthatswana, Venda, Ciskei en die Koningryke van Lesotho en Swaziland. South African Committee for Stratigraphy. Council for Geoscience, Pretoria, Pp 494.

Welman. J, Looek J.C, Rubidge B.S. 2001 New evidence for diachroneity of the Eccca-Beaufort contact (Karoo Supergroup, South Africa). *S Afr. J Sci.*97:320–322

Zawada, P.K, Cadle, A.B. 1987. Position of the Eccca-Beaufort contact in the southwestern Orange Free State: An evaluation of four possible alternatives. *S Afr. J Geol.* 91:49–56.



APPENDIX A  
CURRICULUM VITAE

ELIZE BUTLER

PROFESSION: Palaeontologist

YEARS' EXPERIENCE: 30 years in Palaeontology

EDUCATION: B.Sc Botany and Zoology, 1988  
University of the Orange Free State

B. Sc (Hons) Zoology, 1991  
University of the Orange Free State

Management Course, 1991  
University of the Orange Free State

M. Sc. *Cum laude* (Zoology), 2009  
University of the Free State

Dissertation title: The postcranial skeleton of the Early Triassic non-mammalian Cynodont *Galesaurus planiceps*: implications for biology and lifestyle

MEMBERSHIP

Palaeontological Society of South Africa (PSSA) 2006-currently

EMPLOYMENT HISTORY

Part time Laboratory assistant Department of Zoology & Entomology University of the Free State Zoology 1989-1992

Part time laboratory assistant Department of Virology University of the Free State Zoology 1992

Research Assistant National Museum, Bloemfontein 1993 – 1997

Principal Research Assistant National Museum, Bloemfontein  
and Collection Manager 1998–2022



## TECHNICAL REPORTS

Butler, E. 2014. Palaeontological Impact Assessment of the proposed development of private dwellings on portion 5 of farm 304 Matjesfontein Keurboomstrand, Knysna District, Western Cape Province. Bloemfontein.

Butler, E. 2014. Palaeontological Impact Assessment for the proposed upgrade of existing water supply infrastructure at Noupoot, Northern Cape Province. 2014. Bloemfontein.

Butler, E. 2015. Palaeontological impact assessment of the proposed consolidation, re-division, and development of 250 serviced erven in Nieu-Bethesda, Camdeboo local municipality, Eastern Cape. Bloemfontein.

Butler, E. 2015. Palaeontological impact assessment of the proposed mixed land developments at Rooikraal 454, Vrede, Free State. Bloemfontein.

Butler, E. 2015. Palaeontological exemption report of the proposed truck stop development at Palmiet 585, Vrede, Free State. Bloemfontein.

Butler, E. 2015. Palaeontological impact assessment of the proposed Orange Grove 3500 residential development, Buffalo City Metropolitan Municipality East London, Eastern Cape. Bloemfontein.

Butler, E. 2015. Palaeontological Impact Assessment of the proposed Gonubie residential development, Buffalo City Metropolitan Municipality East London, Eastern Cape Province. Bloemfontein.

Butler, E. 2015. Palaeontological Impact Assessment of the proposed Ficksburg raw water pipeline. Bloemfontein.

Butler, E. 2015. Palaeontological Heritage Impact Assessment report on the establishment of the 65 mw Majuba Solar Photovoltaic facility and associated infrastructure on portion 1, 2 and 6 of the farm Witkoppies 81 HS, Mpumalanga Province. Bloemfontein.

Butler, E. 2015. Palaeontological Impact Assessment of the proposed township establishment on the remainder of portion 6 and 7 of the farm Sunnyside 2620, Bloemfontein, Mangaung metropolitan municipality, Free State, Bloemfontein.

Butler, E. 2015. Palaeontological Impact Assessment of the proposed Woodhouse 1 photovoltaic solar energy facilities and associated infrastructure on the farm Woodhouse729, near Vryburg, North West Province. Bloemfontein.

Butler, E. 2015. Palaeontological Impact Assessment of the proposed Woodhouse 2 photovoltaic solar energy facilities and associated infrastructure on the farm Woodhouse 729, near Vryburg, North West Province. Bloemfontein.

Butler, E. 2015. Palaeontological Impact Assessment of the proposed Orkney solar energy farm and associated infrastructure on the remaining extent of Portions 7 and 21 of the farm Wolvehuis 114, near Orkney, North West Province. Bloemfontein.

Butler, E. 2015. Palaeontological Impact Assessment of the proposed Spectra foods broiler houses and abattoir on the farm Maiden Manor 170 and Ashby Manor 171, Lukhanji Municipality, Queenstown, Eastern Cape Province. Bloemfontein.

Butler, E. 2016. Palaeontological Impact Assessment of the proposed construction of the 150 MW Noupoot concentrated solar power facility and associated infrastructure on portion 1 and 4 of the farm Carolus Poort 167 and the remainder of Farm 207, near Noupoot, Northern Cape. Prepared for Savannah Environmental. Bloemfontein.

Butler, E. 2016. Palaeontological Impact Assessment of the proposed Woodhouse 1 Photovoltaic Solar Energy facility and associated infrastructure on the farm Woodhouse 729, near Vryburg, North West Province. Bloemfontein.

Butler, E. 2016. Palaeontological Impact Assessment of the proposed Woodhouse 2 Photovoltaic Solar Energy facility and associated infrastructure on the farm Woodhouse 729, near Vryburg, North West Province. Bloemfontein.

Butler, E. 2016. Proposed 132kV overhead power line and switchyard station for the authorised Solis Power 1 CSP project near Upington, Northern Cape. Bloemfontein.

Butler, E. 2016. Palaeontological Impact Assessment of the proposed Senqu Pedestrian Bridges in Ward 5 of Senqu Local Municipality, Eastern Cape Province. Bloemfontein.



Butler, E. 2016. Recommendation from further Palaeontological Studies: Proposed Construction of the Modderfontein Filling Station on Erf 28 Portion 30, Founders Hill, City of Johannesburg, Gauteng Province. Bloemfontein.

Butler, E. 2016. Recommendation from further Palaeontological Studies: Proposed Construction of the Modikwa Filling Station on a Portion of Portion 2 of Mooihoek 255 Kt, Greater Tubatse Local Municipality, Limpopo Province. Bloemfontein.

Butler, E. 2016. Recommendation from further Palaeontological Studies: Proposed Construction of the Heidedal filling station on Erf 16603, Heidedal Extension 24, Mangaung Local Municipality, Bloemfontein, Free State Province. Bloemfontein.

Butler, E. 2016. Recommended Exemption from further Palaeontological studies: Proposed Construction of the Gunstfontein Switching Station, 132kv Overhead Power Line (Single or Double Circuit) and ancillary infrastructure for the Gunstfontein Wind Farm Near Sutherland, Northern Cape Province. Savannah South Africa. Bloemfontein.

Butler, E. 2016. Palaeontological Impact Assessment of the proposed Galla Hills Quarry on the remainder of the farm Roode Krantz 203, in the Lukhanji Municipality, division of Queenstown, Eastern Cape Province. Bloemfontein.

Butler, E. 2016. Chris Hani District Municipality Cluster 9 water backlog project phases 3a and 3b: Palaeontology inspection at Tsomo WTW. Bloemfontein.

Butler, E. 2016. Palaeontological Impact Assessment of the proposed construction of the 150 MW Noupoot concentrated solar power facility and associated infrastructure on portion 1 and 4 of the farm Carolus Poort 167 and the remainder of Farm 207, near Noupoot, Northern Cape. Savannah South Africa. Bloemfontein.

Butler, E. 2016. Palaeontological Impact Assessment of the proposed upgrading of the main road MR450 (R335) from Motherwell to Addo within the Nelson Mandela Bay Municipality and Sunday's River valley Local Municipality, Eastern Cape Province. Bloemfontein.

Butler, E. 2016. Palaeontological Impact Assessment construction of the proposed Metals Industrial Cluster and associated infrastructure near Kuruman, Northern Cape Province. Savannah South Africa. Bloemfontein.

Butler, E. 2016. Palaeontological Impact Assessment for the proposed construction of up to a 132kv power line and associated infrastructure for the proposed Kalkaar Solar Thermal Power Plant near Kimberley, Free State and Northern Cape Provinces. PGS Heritage. Bloemfontein.

Butler, E. 2016. Palaeontological Impact Assessment of the proposed development of two burrow pits (DR02625 and DR02614) in the Enoch Mgijima Municipality, Chris Hani District, Eastern Cape.

Butler, E. 2016. Ezibeleni waste Buy-Back Centre (near Queenstown), Enoch Mgijima Local Municipality, Eastern Cape. Bloemfontein.

Butler, E. 2016. Palaeontological Impact Assessment for the proposed construction of two 5 Mw Solar Photovoltaic Power Plants on Farm Wildebeestkuil 59 and Farm Leeuwbosch 44, Leeudoringstad, North West Province. Bloemfontein.

Butler, E. 2016. Palaeontological Impact Assessment for the proposed development of four Leeuwberg Wind farms and basic assessments for the associated grid connection near Loeriesfontein, Northern Cape Province. Bloemfontein.

Butler, E. 2016. Palaeontological impact assessment for the proposed Aggeneys south prospecting right project, Northern Cape Province. Bloemfontein.

Butler, E. 2016. Palaeontological impact assessment of the proposed Motuoane Ladysmith Exploration right application, KwaZulu Natal. Bloemfontein.

Butler, E. 2016. Palaeontological impact assessment for the proposed construction of two 5 MW solar photovoltaic power plants on farm Wildebeestkuil 59 and farm Leeuwbosch 44, Leeudoringstad, North West Province. Bloemfontein.

Butler, E. 2016: Palaeontological desktop assessment of the establishment of the proposed residential and mixed-use development on the remainder of portion 7 and portion 898 of the farm Knopjeslaagte 385 Ir, located near Centurion within the Tshwane Metropolitan Municipality of Gauteng Province. Bloemfontein.



Butler, E. 2017. Palaeontological impact assessment for the proposed development of a new cemetery, near Kathu, Gamagara local municipality and John Taolo Gaetsewe district municipality, Northern Cape. Bloemfontein.

Butler, E. 2017. Palaeontological Impact Assessment of The Proposed Development of The New Open Cast Mining Operations on The Remaining Portions Of 6, 7, 8 And 10 Of the Farm Kwaggafontein 8 In the Carolina Magisterial District, Mpumalanga Province. Bloemfontein.

Butler, E. 2017. Palaeontological Desktop Assessment for the Proposed Development of a Wastewater Treatment Works at Lanseria, Gauteng Province. Bloemfontein.

Butler, E. 2017. Palaeontological Scoping Report for the Proposed Construction of a Warehouse and Associated Infrastructure at Perseverance in Port Elizabeth, Eastern Cape Province.

Butler, E. 2017. Palaeontological Desktop Assessment for the Proposed Establishment of a Diesel Farm and a Haul Road for the Tshipi Borwa mine Near Hotazel, In the John Taolo Gaetsewe District Municipality in the Northern Cape Province. Bloemfontein.

Butler, E. 2017. Palaeontological Desktop Assessment for the Proposed Changes to Operations at the UMK Mine near Hotazel, In the John Taolo Gaetsewe District Municipality in the Northern Cape Province. Bloemfontein.

Butler, E. 2017. Palaeontological Impact Assessment for the Development of the Proposed Ventersburg Project-An Underground Mining Operation near Ventersburg and Henneman, Free State Province. Bloemfontein.

Butler, E. 2017. Palaeontological desktop assessment of the proposed development of a 3000 MW combined cycle gas turbine (CCGT) in Richards Bay, Kwazulu-Natal. Bloemfontein.

Butler, E. 2017. Palaeontological Impact Assessment for the Development of the Proposed Revalidation of the lapsed General Plans for Elliotdale, Mbhashe Local Municipality. Bloemfontein.

Butler, E. 2017. Palaeontological assessment of the proposed development of a 3000 MW Combined Cycle Gas Turbine (CCGT) in Richards Bay, Kwazulu-Natal. Bloemfontein.

Butler, E. 2017. Palaeontological Impact Assessment of the proposed development of the new open cast mining operations on the remaining portions of 6, 7, 8 and 10 of the farm Kwaggafontein 8 10 in the Albert Luthuli Local Municipality, Gert Sibande District Municipality, Mpumalanga Province. Bloemfontein.

Butler, E. 2017. Palaeontological Impact Assessment of the proposed mining of the farm Zandvoort 10 in the Albert Luthuli Local Municipality, Gert Sibande District Municipality, Mpumalanga Province. Bloemfontein.

Butler, E. 2017. Palaeontological Desktop Assessment for the proposed Lanseria outfall sewer pipeline in Johannesburg, Gauteng Province. Bloemfontein.

Butler, E. 2017. Palaeontological Desktop Assessment of the proposed development of open pit mining at Pit 36W (New Pit) and 62E (Dishaba) Amandelbult Mine Complex, Thabazimbi, Limpopo Province. Bloemfontein.

Butler, E. 2017. Palaeontological impact assessment of the proposed development of the sport precinct and associated infrastructure at Merrifield Preparatory school and college, Amathole Municipality, East London. PGS Heritage. Bloemfontein.

Butler, E. 2017. Palaeontological impact assessment of the proposed construction of the Lehae training and fire station, Lenasia, Gauteng Province. Bloemfontein.

Butler, E. 2017. Palaeontological Desktop Assessment of the proposed development of the new open cast mining operations of the Impunzi mine in the Mpumalanga Province. Bloemfontein.

Butler, E. 2017. Palaeontological Desktop Assessment of the construction of the proposed Viljoenskroon Munic 132 KV line, Vierfontein substation and related projects. Bloemfontein.

Butler, E. 2017. Palaeontological Desktop Assessment of the proposed rehabilitation of 5 ownerless asbestos mines. Bloemfontein.





Butler, E. 2017. Palaeontological Desktop Assessment of the proposed development of the Lephalale coal and power project, Lephalale, Limpopo Province, Republic of South Africa. Bloemfontein.

Butler, E. 2017. Palaeontological Impact Assessment of the proposed construction of a 132KV powerline from the Tweespruit distribution substation (in the Mantsopa local municipality) to the Driedorp rural substation (within the Naledi local municipality), Free State province. Bloemfontein.

Butler, E. 2017. Palaeontological Desktop Assessment of the proposed development of the new coal-fired power plant and associated infrastructure near Makhado, Limpopo Province. Bloemfontein.

Butler, E. 2017. Palaeontological Impact Assessment of the proposed construction of a Photovoltaic Solar Power station near Collett substation, Middelburg, Eastern Cape. Bloemfontein.

Butler, E. 2017. Palaeontological Impact Assessment for the proposed township establishment of 2000 residential sites with supporting amenities on a portion of farm 826 in Botshabelo West, Mangaung Metro, Free State Province. Bloemfontein.

Butler, E. 2017. Palaeontological Desktop Assessment for the proposed prospecting right project without bulk sampling, in the Koa Valley, Northern Cape Province. Bloemfontein.

Butler, E. 2017. Palaeontological Desktop Assessment for the proposed Aroams prospecting right project, without bulk sampling, near Aggeneys, Northern Cape Province. Bloemfontein.

Butler, E. 2017. Palaeontological Impact Assessment of the proposed Belvoir aggregate quarry II on portion 7 of the farm Maidenhead 169, Enoch Mgijima Municipality, division of Queenstown, Eastern Cape. Bloemfontein.

Butler, E. 2017. PIA site visit and report of the proposed Galla Hills Quarry on the remainder of the farm Roode Krantz 203, in the Lukhanji Municipality, division of Queenstown, Eastern Cape Province. Bloemfontein.

Butler, E. 2017. Palaeontological Impact Assessment of the proposed construction of Tina Falls Hydropower and associated power lines near Cumbu, Mthlontlo Local Municipality, Eastern Cape. Bloemfontein.

Butler, E. 2017. Palaeontological Desktop Assessment of the proposed construction of the Mangaung Gariep Water Augmentation Project. Bloemfontein.

Butler, E. 2017. Palaeontological Impact Assessment of the proposed Belvoir aggregate quarry II on portion 7 of the farm Maidenhead 169, Enoch Mgijima Municipality, division of Queenstown, Eastern Cape. Bloemfontein.

Butler, E. 2017. Palaeontological Impact Assessment of the proposed construction of the Melkspruit-Rouxville 132KV Power line. Bloemfontein.

Butler, E. 2017. Palaeontological Desktop Assessment of the proposed development of a railway siding on a Portion of portion 41 of the farm Rustfontein 109 is, Govan Mbeki local municipality, Gert Sibande district municipality, Mpumalanga Province. Bloemfontein.

Butler, E. 2017. Palaeontological Impact Assessment of the proposed consolidation of the proposed Ilima Colliery in the Albert Luthuli local municipality, Gert Sibande District Municipality, Mpumalanga Province. Bloemfontein.

Butler, E. 2017. Palaeontological Desktop Assessment of the proposed extension of the Kareerand Tailings Storage Facility, associated borrow pits as well as a storm water drainage channel in the Vaal River near Stilfontein, North West Province. Bloemfontein.

Butler, E. 2017. Palaeontological Desktop Assessment of the proposed construction of a filling station and associated facilities on the Erf 6279, district municipality of John Taolo Gaetsewe District, Ga-Segonyana Local Municipality Northern Cape. Bloemfontein.



Butler, E. 2017. Palaeontological Desktop Assessment of the proposed of the Lephale Coal and Power Project, Lephale, Limpopo Province, Republic of South Africa. Bloemfontein.

Butler, E. 2017. Palaeontological Desktop Assessment of the proposed Overvaal Trust PV Facility, Buffelspoort, North West Province. Bloemfontein.

Butler, E. 2017. Palaeontological Impact Assessment of the proposed development of the H<sub>2</sub> Energy Power Station and associated infrastructure on Portions 21; 22 And 23 of the farm Hartebeestspruit in the Thembisile Hani Local Municipality, Nkangala District near Kwamhlanga, Mpumalanga Province. Bloemfontein.

Butler, E. 2017. Palaeontological Impact Assessment of the proposed upgrade of the Sandriver Canal and Klippan Pump station in Welkom, Free State Province. Bloemfontein.

Butler, E. 2017. Palaeontological Impact Assessment of the proposed upgrade of the 132kv and 11kv power line into a dual circuit above ground power line feeding into the Urania substation in Welkom, Free State Province. Bloemfontein.

Butler, E. 2017. Palaeontological Desktop Assessment of the proposed Swaziland-Mozambique border patrol road and Mozambique barrier structure. Bloemfontein.

Butler, E. 2017. Palaeontological Impact Assessment of the proposed diamonds alluvial & diamonds general prospecting right application near Christiana on the remaining extent of portion 1 of the farm Kaffraria 314, registration division HO, North West Province. Bloemfontein.

Butler, E. 2017. Palaeontological Desktop Assessment for the proposed development of Wastewater Treatment Works on Hartebeesfontein, near Panbult, Mpumalanga. Bloemfontein.

Butler, E. 2017. Palaeontological Desktop Assessment for the proposed development of Wastewater Treatment Works on Rustplaas near Piet Retief, Mpumalanga. Bloemfontein.

Butler, E. 2018. Palaeontological Impact Assessment for the Proposed Landfill Site in Luckhoff, Letsemeng Local Municipality, Xhariep District, Free State. Bloemfontein.

Butler, E. 2018. Palaeontological Impact Assessment of the proposed development of the new Mutsho coal-fired power plant and associated infrastructure near Makhado, Limpopo Province. Bloemfontein.

Butler, E. 2018. Palaeontological Impact Assessment of the authorisation and amendment processes for Manangu mine near Delmas, Victor Khanye local municipality, Mpumalanga. Bloemfontein.

Butler, E. 2018. Palaeontological Desktop Assessment for the proposed Mashishing township establishment in Mashishing (Lydenburg), Mpumalanga Province. Bloemfontein.

Butler, E. 2018. Palaeontological Desktop Assessment for the Proposed Mlonzi Estate Development near Lusikisiki, Ngquza Hill Local Municipality, Eastern Cape. Bloemfontein.

Butler, E. 2018. Palaeontological Phase 1 Assessment of the proposed Swaziland-Mozambique border patrol road and Mozambique barrier structure. Bloemfontein.

Butler, E. 2018. Palaeontological Desktop Assessment for the proposed electricity expansion project and Sekgame Switching Station at the Sishen Mine, Northern Cape Province. Bloemfontein.

Butler, E. 2018. Palaeontological field assessment of the proposed construction of the Zonnebloem Switching Station (132/22kV) and two loop-in loop-out power lines (132kV) in the Mpumalanga Province. Bloemfontein.

Butler, E. 2018. Palaeontological Field Assessment for the proposed re-alignment and de-commissioning of the Firham-Platrand 88kv Powerline, near Standerton, Lekwa Local Municipality, Mpumalanga province. Bloemfontein.

Butler, E. 2018. Palaeontological Desktop Assessment of the proposed Villa Rosa development In the Buffalo City Metropolitan Municipality, East London. Bloemfontein.

Butler, E. 2018. Palaeontological field Assessment of the proposed Villa Rosa development In the Buffalo City Metropolitan Municipality, East London. Bloemfontein.



Butler, E. 2018. Palaeontological desktop assessment of the proposed Mookodi – Mahikeng 400kV line, North West Province. Bloemfontein.

Butler, E. 2018. Palaeontological Desktop Assessment for the proposed Thornhill Housing Project, Ndlambe Municipality, Port Alfred, Eastern Cape Province. Bloemfontein.

Butler, E. 2018. Palaeontological desktop assessment of the proposed housing development on portion 237 of farm Hartebeestpoort 328. Bloemfontein.

Butler, E. 2018. Palaeontological desktop assessment of the proposed New Age Chicken layer facility located on holding 75 Endicott near Springs in Gauteng. Bloemfontein.

Butler, E. 2018 Palaeontological Desktop Assessment for the development of the proposed Leslie 1 Mining Project near Leandra, Mpumalanga Province. Bloemfontein.

Butler, E. 2018. Palaeontological field assessment of the proposed development of the Wildealskloof mixed use development near Bloemfontein, Free State Province. Bloemfontein.

Butler, E. 2018. Palaeontological Field Assessment of the proposed Megamor Extension, East London. Bloemfontein

Butler, E. 2018. Palaeontological Impact Assessment of the proposed diamonds Alluvial & Diamonds General Prospecting Right Application near Christiana on the Remaining Extent of Portion 1 of the Farm Kaffraria 314, Registration Division HO, North West Province. Bloemfontein.

Butler, E. 2018. Palaeontological Impact Assessment of the proposed construction of a new 11kV (1.3km) Power Line to supply electricity to a cell tower on farm 215 near Delpportshoop in the Northern Cape. Bloemfontein.

Butler, E. 2018. Palaeontological Field Assessment of the proposed construction of a new 22 kV single wood pole structure power line to the proposed MTN tower, near Britstown, Northern Cape Province. Bloemfontein.

Butler, E. 2018. Palaeontological Exemption Letter for the proposed reclamation and reprocessing of the City Deep Dumps in Johannesburg, Gauteng Province. Bloemfontein.

Butler, E. 2018. Palaeontological Exemption letter for the proposed reclamation and reprocessing of the City Deep Dumps and Rooikraal Tailings Facility in Johannesburg, Gauteng Province. Bloemfontein.

Butler, E. 2018. Proposed Kalabasfontein Mine Extension project, near Bethal, Govan Mbeki District Municipality, Mpumalanga. Bloemfontein.

Butler, E. 2018. Palaeontological Desktop Assessment for the development of the proposed Leslie 1 Mining Project near Leandra, Mpumalanga Province. Bloemfontein.

Butler, E. 2018. Palaeontological Desktop Assessment of the proposed Mookodi – Mahikeng 400kV Line, North West Province. Bloemfontein.

Butler, E. 2018. Environmental Impact Assessment (EIA) for the Proposed 325mw Rondekop Wind Energy Facility between Matjiesfontein and Sutherland in the Northern Cape Province.

Butler, E. 2018. Palaeontological Impact Assessment of the proposed construction of the Tooverberg Wind Energy Facility, and associated grid connection near Touws River in the Western Cape Province. Bloemfontein.

Butler, E. 2018. Palaeontological impact assessment of the proposed Kalabasfontein Mining Right Application, near Bethal, Mpumalanga.

Butler, E., 2019. Palaeontological Desktop Assessment of the proposed Westrand Strengthening Project Phase II.

Butler, E., 2019. Palaeontological Field Assessment for the proposed Sirius 3 Photovoltaic Solar Energy Facility near Upington, Northern Cape Province

Butler, E., 2019. Palaeontological Field Assessment for the proposed Sirius 4 Photovoltaic Solar Energy Facility near Upington, Northern Cape Province



Butler, E., 2019. Palaeontological Field Assessment for Heuningspruit PV 1 Solar Energy Facility near Koppies, Ngwathe Local Municipality, Free State Province.

Butler, E., 2019. Palaeontological Field Assessment for the Moeding Solar Grid Connection, North West Province.

Butler, E., 2019. Recommended Exemption from further Palaeontological studies for the Proposed Agricultural Development on Farms 1763, 2372 And 2363, Kakamas South Settlement, Kai! Garib Municipality, Mgcawu District Municipality, Northern Cape Province.

Butler, E., 2019. Recommended Exemption from further Palaeontological studies: of Proposed Agricultural Development, Plot 1178, Kakamas South Settlement, Kai! Garib Municipality

Butler, E., 2019. Palaeontological Desktop Assessment for the Proposed Waste Rock Dump Project at Tshipi Borwa Mine, near Hotazel, Northern Cape Province:

Butler, E., 2019. Palaeontological Exemption Letter for the proposed DMS Upgrade Project at the Sishen Mine, Gamagara Local Municipality, Northern Cape Province

Butler, E., 2019. Palaeontological Desktop Assessment of the proposed Integrated Environmental Authorisation process for the proposed Der Brochen Amendment project, near Groblershoop, Limpopo

Butler, E., 2019. Palaeontological Desktop Assessment of the proposed updated Environmental Management Programme (EMPr) for the Assmang (Pty) Ltd Black Rock Mining Operations, Hotazel, Northern Cape

Butler, E., 2019. Palaeontological Desktop Assessment of the proposed Kriel Power Station Lime Plant Upgrade, Mpumalanga Province

Butler, E., 2019. Palaeontological Impact Assessment for the proposed Kangala Extension Project Near Delmas, Mpumalanga Province.

Butler, E., 2019. Palaeontological Desktop Assessment for the proposed construction of an iron/steel smelter at the Botshabelo Industrial area within the Mangaung Metropolitan Municipality, Free State Province.

Butler, E., 2019. Recommended Exemption from further Palaeontological studies for the proposed agricultural development on farms 1763, 2372 and 2363, Kakamas South settlement, Kai! Garib Municipality, Mgcawu District Municipality, Northern Cape Province.

Butler, E., 2019. Recommended Exemption from further Palaeontological Studies for Proposed formalisation of Gamakor and Noodkamp low-cost Housing Development, Keimoes, Gordonia Rd, Kai !Garib Local Municipality, ZF Mgcawu District Municipality, Northern Cape Province.

Butler, E., 2019. Recommended Exemption from further Palaeontological Studies for proposed formalisation of Blaauwskop Low-Cost Housing Development, Kenhardt Road, Kai !Garib Local Municipality, ZF Mgcawu District Municipality, Northern Cape Province.

Butler, E., 2019. Palaeontological Desktop Assessment of the proposed mining permit application for the removal of diamonds alluvial and diamonds kimberlite near Windsorton on a certain portion of Farm Zoelen's Laagte 158, Registration Division: Barkly Wes, Northern Cape Province.

Butler, E., 2019. Palaeontological Desktop Assessment of the proposed Vedanta Housing Development, Pella Mission 39, Khâi-Ma Local Municipality, Namakwa District Municipality, Northern Cape.

Butler, E., 2019. Palaeontological Desktop Assessment for The Proposed 920 KWP Groenheuwel Solar Plant Near Augrabies, Northern Cape Province

Butler, E., 2019. Palaeontological Desktop Assessment for the establishment of a Super Fines Storage Facility at Amandelbult Mine, Near Thabazimbi, Limpopo Province



Butler, E., 2019. Palaeontological Impact Assessment for the proposed Sace Lifex Project, Near Emalahleni, Mpumalanga Province

Butler, E., 2019. Palaeontological Desktop Assessment for the proposed Rehav Fort Jackson Warehouse Extension, East London

Butler, E., 2019. Palaeontological Desktop Assessment for the proposed Environmental Authorisation Amendment for moving 3 Km of the Merensky-Kameni 132KV Powerline

Butler, E., 2019. Palaeontological Impact Assessment for the proposed Umsobomvu Solar PV Energy Facilities, Northern and Eastern Cape

Butler, E., 2019. Palaeontological Desktop Assessment for six proposed Black Mountain Mining Prospecting Right Applications, without Bulk Sampling, in the Northern Cape.

Butler, E., 2019. Palaeontological field Assessment of the Filling Station (Rietvlei Extension 6) on the Remaining Portion of Portion 1 of the Farm Witkoppies 393JR east of the Rietvleidam Nature Reserve, City of Tshwane, Gauteng

Butler, E., 2019. Palaeontological Desktop Assessment of The Proposed Upgrade of The Vaal Gamagara Regional Water Supply Scheme: Phase 2 And Groundwater Abstraction

Butler, E., 2019. Palaeontological Desktop Assessment of The Expansion of The Jan Kempdorp Cemetery on Portion 43 Of Farm Guldenskat 36-Hn, Northern Cape Province

Butler, E., 2019. Palaeontological Desktop Assessment of the Proposed Residential Development on Portion 42 Of Farm Geldunskat No 36 In Jan Kempdorp, Phokwane Local Municipality, Northern Cape Province

Butler, E., 2019. Palaeontological Impact Assessment of the proposed new Township Development, Lethabo Park, on Remainder of Farm Roodepan No 70, Erf 17725 And Erf 15089, Roodepan Kimberley, Sol Plaatjies Local Municipality, Frances Baard District Municipality, Northern Cape

Butler, E., 2019. Palaeontological Protocol for Finds for the proposed 16m WH Battery Storage System in Steinkopf, Northern Cape Province

Butler, E., 2019. Palaeontological Exemption Letter of the proposed 4.5WH Battery Storage System near Midway-Pofadder, Northern Cape Province

Butler, E., 2019. Palaeontological Exemption Letter of the proposed 2.5ml Process Water Reservoir at Gloria Mine, Black Rock, Hotazel, Northern Cape

Butler, E., 2019. Palaeontological Desktop Assessment for the Establishment of a Super Fines Storage Facility at Gloria Mine, Black Rock Mine Operations, Hotazel, Northern Cape:

Butler, E., 2019. Palaeontological Desktop Assessment for the Proposed New Railway Bridge, and Rail Line Between Hotazel and the Gloria Mine, Northern Cape Province

Butler, E., 2019. Palaeontological Exemption Letter of The Proposed Mixed Use Commercial Development on Portion 17 of Farm Boegoeberg Settlement Number 48, !Kheis Local Municipality in The Northern Cape Province. Banzai Environmental (Pty) Ltd, Bloemfontein.

Butler, E., 2019. Palaeontological Desktop Assessment of the Proposed Diamond Mining Permit Application Near Kimberley, Sol Plaatjies Municipality, Northern Cape Province. Banzai Environmental (Pty) Ltd, Bloemfontein.

Butler, E., 2019. Palaeontological Desktop Assessment of the Proposed Diamonds (Alluvial, General & In Kimberlite) Prospecting Right Application near Postmasburg, Registration Division; Hay, Northern Cape Province. Banzai Environmental (Pty) Ltd, Bloemfontein.



Butler, E., 2019. Palaeontological Desktop Assessment of the proposed diamonds (alluvial, general & in kimberlite) prospecting right application near Kimberley, Northern Cape Province. Banzai Environmental (Pty) Ltd, Bloemfontein.

Butler, E., 2019. Palaeontological Phase 1 Impact Assessment of the proposed upgrade of the Vaal Gamagara regional water supply scheme: Phase 2 and groundwater abstraction. Banzai Environmental (Pty) Ltd, Bloemfontein.

Butler, E., 2019. Palaeontological Desktop Assessment of the proposed seepage interception drains at Duvha Power Station, Emalahleni Municipality, Mpumalanga Province. Banzai Environmental (Pty) Ltd, Bloemfontein.

Butler, E., 2019. Palaeontological Desktop Assessment letter for the Proposed PV Solar Facility at the Heineken Sedibeng Brewery, near Vereeniging, Gauteng. Banzai Environmental (Pty) Ltd, Bloemfontein.

Butler, E., 2019. Palaeontological Phase 1 Assessment for the Proposed PV Solar Facility at the Heineken Sedibeng Brewery, near Vereeniging, Gauteng. Banzai Environmental (Pty) Ltd, Bloemfontein.

Butler, E., 2019. Palaeontological field Assessment for the Proposed Upgrade of the Kolomela Mining Operations, Tsantsabane Local Municipality, Siyanda District Municipality, Northern Cape Province, Northern Cape. Banzai Environmental (Pty) Ltd, Bloemfontein.

Butler, E., 2019. Palaeontological Desktop Assessment of the proposed feldspar prospecting rights and mining application on portion 4 and 5 of the farm Rozynen 104, Kakamas South, Kai! Garib Municipality, Zf Mgcauw District Municipality, Northern Cape. Banzai Environmental (Pty) Ltd, Bloemfontein.

Butler, E., 2019. Palaeontological Phase 1 Field Assessment of the proposed Summerpride Residential Development and Associated Infrastructure on Erf 107, Buffalo City Municipality, East London. Banzai Environmental (Pty) Ltd, Bloemfontein.

Butler, E., 2019. Palaeontological Desktop Impact Assessment for the proposed re-commission of the Old Balgay Colliery near Dundee, KwaZulu Natal.

Butler, E., 2019. Palaeontological Phase 1 Impact Assessment for the Proposed Re-Commission of the Old Balgay Colliery near Dundee, KwaZulu Natal. Banzai Environmental (Pty) Ltd, Bloemfontein.

Butler, E., 2019. Palaeontological Desktop Assessment for the Proposed Environmental Authorisation and Amendment Processes for Elandsfontein Colliery. Banzai Environmental (Pty) Ltd, Bloemfontein.

Butler, E., 2019. Palaeontological Impact Assessment and Protocol for Finds of a Proposed New Quarry on Portion 9 (of 6) of the farm Mimosa Glen 885, Bloemfontein, Free State Province. Banzai Environmental (Pty) Ltd, Bloemfontein.

Butler, E., 2019. Palaeontological Impact Assessment and Protocol for Finds of a proposed development on Portion 9 and 10 of the Farm Mimosa Glen 885, Bloemfontein, Free State Province. Banzai Environmental (Pty) Ltd, Bloemfontein.

Butler, E., 2019. Palaeontological Exemption Letter for the proposed residential development on the Remainder of Portion 1 of the Farm Strathearn 2154 in the Magisterial District of Bloemfontein, Free State. Banzai Environmental (Pty) Ltd, Bloemfontein.

Butler, E., 2019. Palaeontological Field Assessment for the Proposed Nigel Gas Transmission Pipeline Project in the Nigel Area of the Ekurhuleni Metropolitan Municipality, Gauteng Province. Banzai Environmental (Pty) Ltd, Bloemfontein.

Butler, E., 2019. Palaeontological Desktop Assessment for five Proposed Black Mountain Mining Prospecting Right Applications, Without Bulk Sampling, in the Northern Cape. Banzai Environmental (Pty) Ltd, Bloemfontein.

Butler, E. 2019. Palaeontological Desktop Assessment for the Proposed Environmental Authorisation and an Integrated Water Use Licence Application for the Reclamation of the Marievale Tailings Storage Facilities, Ekurhuleni Metropolitan Municipality - Gauteng Province. Banzai Environmental (Pty) Ltd, Bloemfontein.



Butler, E., 2019. Palaeontological Impact Assessment for the Proposed Sace Lifex Project, near Emalahleni, Mpumalanga Province. Banzai Environmental (Pty) Ltd, Bloemfontein.

Butler, E., 2019. Palaeontological Desktop Assessment for the proposed Golfview Colliery near Ermelo, Msukaligwa Local Municipality, Mpumalanga Province

Butler, E., 2019. Palaeontological Desktop Assessment for the Proposed Kangra Maquasa Block C Mining development near Piet Retief, in the Mkhondo Local Municipality within the Gert Sibande District Municipality. Banzai Environmental (Pty) Ltd, Bloemfontein.

Butler, E., 2019. Palaeontological Desktop Assessment for the Proposed Amendment of the Kusipongo Underground and Opencast Coal Mine in Support of an Environmental Authorization and Waste Management License Application. Banzai Environmental (Pty) Ltd, Bloemfontein.

Butler, E., 2019. Palaeontological Exemption Letter of the Proposed Mamatwan Mine Section 24g Rectification Application, near Hotazel, Northern Cape Province. Banzai Environmental (Pty) Ltd, Bloemfontein.

Butler, E., 2020. Palaeontological Field Assessment for the Proposed Environmental Authorisation and Amendment Processes for Elandsfontein Colliery. Banzai Environmental (Pty) Ltd, Bloemfontein.

Butler, E., 2020. Palaeontological Desktop Assessment for the Proposed Extension of the South African Nuclear Energy Corporation (Necsa) Pipe Storage Facility, Madibeng Local Municipality, North West Province. Banzai Environmental (Pty) Ltd, Bloemfontein.

Butler, E., 2020. Palaeontological Field Assessment for the Proposed Piggery on Portion 46 of the Farm Brakkefontien 416, Within the Nelson Mandela Bay Municipality, Eastern Cape. Banzai Environmental (Pty) Ltd, Bloemfontein.

Butler, E., 2020. Palaeontological field Assessment for the proposed Rietfontein Housing Project as part of the Rapid Land Release Programme, Gauteng Province Department of Human Settlements, City of Johannesburg Metropolitan Municipality. Banzai Environmental (Pty) Ltd, Bloemfontein.

Butler, E., 2020. Palaeontological Desktop Assessment for the Proposed Choje Wind Farm between Grahamstown and Somerset East, Eastern Cape. Banzai Environmental (Pty) Ltd, Bloemfontein.

Butler, E., 2020. Palaeontological Desktop Assessment of the Proposed Prospecting Right Application for the Prospecting of Diamonds (Alluvial, General & In Kimberlite), Combined with A Waste License Application, Registration Division: Gordonia and Kenhardt, Northern Cape Province. Banzai Environmental (Pty) Ltd, Bloemfontein.

Butler, E., 2020. Palaeontological Impact Assessment for the Proposed Clayville Truck Yard, Ablution Blocks and Wash Bay to be Situated on Portion 55 And 56 Of Erf 1015, Clayville X11, Ekurhuleni Metropolitan Municipality, Gauteng Province. Banzai Environmental (Pty) Ltd, Bloemfontein.

Butler, E., 2020. Palaeontological Desktop Assessment for the Proposed Hartebeesthoek Residential Development. Banzai Environmental (Pty) Ltd, Bloemfontein.

Butler, E., 2020. Palaeontological Desktop Assessment for the Proposed Mooiplaats Educational Facility, Gauteng Province. Banzai Environmental (Pty) Ltd, Bloemfontein.

Butler, E., 2020. Palaeontological Impact Assessment for the Proposed Monument Park Student Housing Establishment. Banzai Environmental (Pty) Ltd, Bloemfontein.

Butler, E., 2020. Palaeontological Field Assessment for the Proposed Standerton X10 Residential and Mixed-Use Developments, Lekwa Local Municipality Standerton, Mpumalanga Province. Banzai Environmental (Pty) Ltd, Bloemfontein.

Butler, E., 2020. Palaeontological Field Assessment for the Rezoning and Subdivision of Portion 6 Of Farm 743, East London. Banzai Environmental (Pty) Ltd, Bloemfontein. Banzai Environmental (Pty) Ltd, Bloemfontein.



Butler, E., 2020. Palaeontological Field Assessment for the Proposed Matla Power Station Reverse Osmosis Plant, Mpumalanga Province. Banzai Environmental (Pty) Ltd, Bloemfontein.

Butler, E., 2020. Palaeontological Desktop Assessment of the Proposed Prospecting Right Application Without Bulk Sampling for the Prospecting of Diamonds Alluvial near Bloemhof on Portion 3 (Portion 1) of the Farm Boschpan 339, the Remaining Extent of Portion 8 (Portion 1), Portion 9 (Portion 1) and Portion 10 (Portion 1) and Portion 17 (Portion 1) of the Farm Panfontein 270, Registration Division: Ho, North West Province. Banzai Environmental (Pty) Ltd, Bloemfontein.

Butler, E., 2020. Palaeontological Desktop Assessment of the Proposed Prospecting Right Application Combined with a Waste Licence Application for the Prospecting of Diamonds Alluvial, Diamonds General and Diamonds near Wolmaransstad on the Remaining Extent, Portion 7 and Portion 8 Of Farm Rooibult 152, Registration Division: HO, North West Province. Banzai Environmental (Pty) Ltd, Bloemfontein.

Butler, E., 2020. Palaeontological Desktop Assessment of the Proposed Prospecting Right Application With Bulk Sampling combined with a Waste Licence Application for the Prospecting of Diamonds Alluvial (Da), Diamonds General (D), Diamonds (Dia) and Diamonds In Kimberlite (Dk) near Prieska On Portion 7, a certain Portion of the Remaining Extent of Portion 9 (Wouter), Portion 11 (De Hoek), Portion 14 (Stofdraai) (Portion of Portion 4), the Remaining Extent of Portion 16 (Portion Of Portion 9) (Wouter) and the Remaining Extent of Portion 18 (Portion of Portion 10) of the Farm Lanyon Vale 376, Registration Division: Hay, Northern Cape. Banzai Environmental (Pty) Ltd, Bloemfontein.

Butler, E., 2020. Palaeontological Desktop Assessment of the Proposed Prospecting Right Area and Mining Permit Area near Ritchie on the Remaining Extent of Portion 3 (Anna's Hoop) of the Farm Zandheuvell 144, Registration Division: Kimberley, Northern Cape Province. Banzai Environmental (Pty) Ltd, Bloemfontein.

Butler, E., 2020. Palaeontological Desktop Assessment of the Proposed Okapi Diamonds (Pty) Ltd Mining Right of Diamonds Alluvial (Da) & Diamonds General (D) Combined with a Waste Licence Application on the Remaining Extent of Portion 9 (Wouter) of the Farm Lanyon Vale 376; Registration Division: Hay; Northern Cape Province. Banzai Environmental (Pty) Ltd, Bloemfontein.

Butler, E., 2020. Palaeontological Field Assessment of the Proposed Prospecting Right Application for the Prospecting of Diamonds (Alluvial & General) between Douglas and Prieska on Portion 12, Remaining Extent of Portion 29 (Portion of Portion 13) and Portion 31 (Portion of Portion 29) on the Farm Reads Drift 74, Registration Division; Herbert, Northern Cape Province. Banzai Environmental (Pty) Ltd, Bloemfontein.

Butler, E., 2020. Palaeontological Desktop Assessment for the Proposed Mining Permit Application Combined with a Waste License Application for the Mining of Diamonds (Alluvial) Near Schweitzer-Reneke on a certain Portion of Portion 12 (Ptn of Ptn 7) of the Farm Doornhoek 165, Registration Division: HO, North West Province. Banzai Environmental (Pty) Ltd, Bloemfontein.

Butler, E., 2020. Palaeontological Desktop Assessment for Black Mountain Koa South Prospecting Right Application, Without Bulk Sampling, in the Northern Cape. Banzai Environmental (Pty) Ltd, Bloemfontein.

Butler, E., 2020. Palaeontological Impact Assessment of the Proposed AA Bakery Expansion, Sedibeng District Municipality, Gauteng. Banzai Environmental (Pty) Ltd, Bloemfontein.

Butler, E., 2020. Palaeontological Desktop Assessment for the Proposed Boegoeberg Township Expansion, !Kheis Local Municipality, ZF Mgcawu District Municipality, Northern Cape Province. Banzai Environmental (Pty) Ltd, Bloemfontein.

Butler, E., 2020. Palaeontological Desktop Assessment for the Proposed Gariiep Township Expansion, !Kheis Local Municipality, ZF Mgcawu District Municipality, Northern Cape Province. Banzai Environmental (Pty) Ltd, Bloemfontein.

Butler, E., 2020. Palaeontological Desktop Assessment for the Proposed Groblershoop Township Expansion, !Kheis Local Municipality, Zf Mgcawu District Municipality, Northern Cape Province. Banzai Environmental (Pty) Ltd, Bloemfontein.

Butler, E., 2020. Palaeontological Desktop Assessment for the Proposed Grootdrink Township Expansion, !Kheis Local Municipality, ZF Mgcawu District Municipality, Northern Cape Province. Banzai Environmental (Pty) Ltd, Bloemfontein.





Butler, E., 2020. Palaeontological Exemption Letter for the Proposed Opwag Township Expansion, !Kheis Local Municipality, ZF Mgcawu District Municipality, Northern Cape Province. Banzai Environmental (Pty) Ltd, Bloemfontein.

Butler, E., 2020. Palaeontological Exemption Letter for the Proposed Topline Township Expansion, !Kheis Local Municipality, ZF Mgcawu District Municipality, Northern Cape Province. Banzai Environmental (Pty) Ltd, Bloemfontein.

Butler, E., 2020. Palaeontological Desktop Assessment for the Proposed Wegdraai Township Expansion, !Kheis Local Municipality, Zf Mgcawu District Municipality, Northern Cape Province. Banzai Environmental (Pty) Ltd, Bloemfontein.

Butler, E., 2020. Palaeontological field Assessment for the Proposed Establishment of an Emulsion Plant on Erf 1559, Hardustria, Harrismith, Free State. Banzai Environmental (Pty) Ltd, Bloemfontein.

Butler, 2020. Part 2 Environmental Authorisation (EA) Amendment Process for the Kudusberg Wind Energy Facility (WEF) near Sutherland, Western and Northern Cape Provinces- Palaeontological Impact Assessment. Banzai Environmental (Pty) Ltd, Bloemfontein.

Butler, E., 2020. Palaeontological Desktop Assessment Proposed for the Construction and Operation of the Battery Energy Storage System (BESS) and Associated Infrastructure and inclusion of Additional Listed Activities for the Authorised Droogfontein 3 Solar Photovoltaic (PV) Energy Facility Located near Kimberley in the Sol Plaatje Local Municipality, Francis Baard District Municipality, in the Northern Cape Province of South Africa. Banzai Environmental (Pty) Ltd, Bloemfontein.

Butler, E., 2020. Palaeontological Impact Assessment for the Proposed Development of a Cluster of Renewable Energy Facilities between Somerset East and Grahamstown in the Eastern Cape. Banzai Environmental (Pty) Ltd, Bloemfontein.

Butler, E., 2021. Palaeontological Desktop Assessment for the Proposed Amaoti Secondary School, Pinetown, eThekweni Metropolitan Municipality KwaZulu Natal. Banzai Environmental (Pty) Ltd, Bloemfontein.

Butler, E., 2021. Palaeontological Impact Assessment for the Proposed an Inland Diesel Depot, Transportation Pipeline and Associated Infrastructure on Portion 5 of the Farm Franshoek No. 1861, Swinburne, Free State Province. Banzai Environmental (Pty) Ltd, Bloemfontein.

Butler, E., 2021. Palaeontological Impact Assessment for the proposed erosion control gabion installation at Alpine Heath Resort on the farm Akkerman No 5679 in the Bergville district Kwazulu-Natal. Banzai Environmental (Pty) Ltd, Bloemfontein.

Butler, E., 2021. Palaeontological Impact Assessment for the proposed Doornkloof Residential development on portion 712 of the farm Doornkloof 391 Jr, City of Tshwane Metropolitan Municipality in Gauteng, South Africa. Banzai Environmental (Pty) Ltd, Bloemfontein.

Butler, E., 2021. Palaeontological Desktop Assessment for the Proposed Expansion of the Square *Kilometre* Array (SKA) Meerkat Project, on the Farms Mey's Dam RE/68, Brak Puts RE /66, Swartfontein RE /496 & Swartfontein 2/496, in the Kareeberg Local Municipality, Pixley Ka Seme District Municipality, and the Farms Los Berg 1/73 & Groot Paardekloof RE /74, in the Karoo Hoogland Local Municipality, Namakwa District Municipality, Northern Cape Province. Banzai Environmental (Pty) Ltd, Bloemfontein.

Butler, E., 2021. Palaeontological Desktop Assessment for De Beers Consolidated Mines: Proposed Drilling on Portion 6 of Scholtzfontein 165 and Farm Arnotsdale 175, Herbert District in the Northern Cape. Banzai Environmental (Pty) Ltd, Bloemfontein.

Butler, E., 2021. Palaeontological Desktop Assessment for De Beers Consolidated Mines: Proposed Drilling on the Remaining Extent of Biessie Laagte 96, and Portion 2 and 6 of Aasvogel Pan 141, Near Hopetown in the Northern Cape. Banzai Environmental (Pty) Ltd, Bloemfontein.

Butler, E., 2021. Palaeontological Desktop Assessment for De Beers Consolidated Mines: Proposed Drilling in the North West Province: on Portions 7 (RE) (of Portion 3), 11, 12 (of Portion 3), 34 (of Portion 30), 35 (of Portion 7) of the Farm Holfontein 147 IO and Portions 1, 2 and the RE) of the Farm Kareeboschbult 76 Ip and Portions 1, 2, 4, 5, 6, (of Portion 3), 7 (of Portion 3), 13, 14, and the Re of the farm Oppaslaagte 100IP and portions 25 (of Portion 24) and 30 of the farm Slypsteen 102 IP. Banzai Environmental (Pty) Ltd, Bloemfontein.



Butler, E., 2021. Palaeontological Desktop Assessment for the Proposed Expansion of the Cavalier Abattoir on farm Oog Van Boekenhoutskloof of Tweefontein 288 JR, near Cullinan, City of Tshwane Metropolitan Municipality, Gauteng. Banzai Environmental (Pty) Ltd, Bloemfontein.

Butler, E., 2021. Palaeontological Impact Assessment for the Proposed Doornkloof Residential Development on Portion 712 of the Farm Doornkloof 391 JR, City of Tshwane Metropolitan Municipality in Gauteng, South Africa. Banzai Environmental (Pty) Ltd, Bloemfontein.

Butler, E., 2021. Palaeontological Desktop Assessment for the proposed High Density Social Housing Development on part of the Remainder of Portion 171 and part of Portion 306 of the farm Derdepoort 326 JR, City of Tshwane. Banzai Environmental (Pty) Ltd, Bloemfontein.

Butler, E., 2021. Palaeontological Desktop Assessment for the proposed Red Rock Mountain Farm activities on Portions 2, 3 and 11 of the Farm Buffelskloof 22, near Calitzdorp in the Western Cape. Banzai Environmental (Pty) Ltd, Bloemfontein.

Butler, E., 2021. Palaeontological Desktop Assessment for the proposed Mixed-use Development on a Part of Remainder of Portion 171 and Portion 306 of the farm Derdepoort 326 JR, City of Tshwane. Banzai Environmental (Pty) Ltd, Bloemfontein.

Butler, E., 2021. Palaeontological Impact Assessment for the Proposed Realignment of the D 2809 Provincial Road as well as the Mining Right Application for the Glisa and Paardeplaats Sections of the NBC Colliery (NBC) near Belfast (eMakhazeni), eMakhazeni Local Municipality, Nkangala District Municipality, Mpumalanga Province. Banzai Environmental (Pty) Ltd, Bloemfontein.

Butler, E., 2021. Palaeontological Desktop Assessment for the proposed construction of Whittlesea Cemetery within Enoch Mgijima Local Municipality area, Eastern Cape. Banzai Environmental (Pty) Ltd, Bloemfontein.

Butler, E., 2021. Palaeontological Impact Assessment for the establishment of a mixed-use development on Portion 0 the of Erf 700, Despatch, Nelson Mandela Bay Municipality, Eastern Cape. Banzai Environmental (Pty) Ltd, Bloemfontein.

Butler, E., 2021. Palaeontological Desktop Assessment for the proposed East Orchards Poultry Farm, Delmas/Botleng Transitional Local Council, Mpumalanga. Banzai Environmental (Pty) Ltd, Bloemfontein.

Butler, E., 2021. Palaeontological Impact Assessment for the proposed East Orchards Poultry Farm, Delmas/Botleng Transitional Local Council, Mpumalanga. Banzai Environmental (Pty) Ltd, Bloemfontein.

Butler, E., 2021. Palaeontological Desktop Assessment to assess the proposed Gariep Road upgrade near Groblershoop, Northern Cape Province. Banzai Environmental (Pty) Ltd, Bloemfontein.

Butler, E., 2021. Palaeontological Impact Assessment for the Ngwedi Solar Plant which forms part of the authorised Paleso Solar Powerplant near Viljoenskroon in the Free State. Banzai Environmental (Pty) Ltd, Bloemfontein.

Butler, E., 2021. Palaeontological Impact Assessment for the Noko Solar Power Plant and power line which forms part of the authorised Paleso Solar Powerplant near Orkney in the North West. Banzai Environmental (Pty) Ltd, Bloemfontein.

Butler, E., 2021. Palaeontological Impact Assessment for the Proposed Power Line as part of the Paleso Solar Power Plant near Viljoenskroon in the Free State. Banzai Environmental (Pty) Ltd, Bloemfontein.

Butler, E., 2021. Palaeontological Impact Assessment for the Thakadu Solar Plant which forms part of the authorised Paleso Solar Powerplant near Viljoenskroon in the Free State. Banzai Environmental (Pty) Ltd, Bloemfontein.

Butler, E., 2020. Palaeontological Desktop Assessment for the proposed Farming Expansions on Portions 50 of the Farm Rooipoort 555 JR, Portion 34 of the Farm Rooipoort 555 JR, Portions 20 and 49 of the Farm



Rooipoort 555 JR and Portion 0(RE) of the Farm Oudou Boerdery 626 JR, Tshwane Metropolitan Municipality, Gauteng Province. Banzai Environmental (Pty) Ltd, Bloemfontein.

Butler, E., 2020. Palaeontological Desktop Assessment for the proposed Saselamani CBD on the Remainder of Tshikundu's Location 262 MT, and the Remainder of Portion 1 of Tshikundu's Location 262 MT, Collins Chabane Local Municipality, Limpopo Province. Banzai Environmental (Pty) Ltd, Bloemfontein.

Butler, E., 2021. Palaeontological Impact Assessment for the proposed expansions of the existing Molare Piggery infrastructure and related activities on Portion 0(Re) of the farm Arendsfontein 464 JS, Portion 0(Re) of the farm Wanhoop 443 JS, Portion 0(Re) of the farm Eikeboom 476 JS and Portions 2 & 7 of the farm Klipbank 467 JS within the jurisdiction of the Steve Tshwete Local Municipality, Mpumalanga Province. Banzai Environmental (Pty) Ltd, Bloemfontein.

Butler, E., 2021. Palaeontological Desktop Assessment for the proposed Nchwaning Rail Balloon Turn Outs at Black Rock Mine Operations (BRMO) near Hotazel in the John Taolo Gaetsewe District Municipality in the Northern Cape. Banzai Environmental (Pty) Ltd, Bloemfontein.

Butler, E., 2021. Palaeontological Desktop Assessment for the proposed Black Rock Mining Operations (BRMO) new rail loop and stacker reclaimer Project at Gloria Mine near Hotazel in the Northern Cape. Banzai Environmental (Pty) Ltd, Bloemfontein.

Butler, E., 2020. Palaeontological Desktop Assessment for the proposed Nchwaning Rail Balloon Turn Outs at Black Rock Mine Operations (BRMO) near Hotazel in the John Taolo Gaetsewe District Municipality in the Northern Cape.

Butler, E., 2021. Palaeontological Impact Assessment for the proposed utilization of one Borrow Pit for the planned Clarkebury DR08034 Road Upgrade, Engcobo Local Municipality, Eastern Cape. Banzai Environmental (Pty) Ltd, Bloemfontein.

Butler, E., 2021. Palaeontological Desktop Assessment for the proposed Kappies Kareeboom Prospecting Project on Portion 1 and the Remainder of the farm Kappies Kareeboom 540, the Remainder of Farm 544, Portion 5 of farm 534 and Portion 1 of the farm Putsfontein 616, ZF Mgcawu District Municipality, Northern Cape Province. Banzai Environmental (Pty) Ltd, Bloemfontein.

Butler, E., 2021. Palaeontological Desktop Assessment for the proposed Kameel Fontein Prospecting Project on the Remainder of the farm Kameel Fontein 490, a portion of the farm Strydfontein 614 and the farm Soetfontein 606, ZF Mgcawu District Municipality, Northern Cape Province. Banzai Environmental (Pty) Ltd, Bloemfontein.

Butler, E., 2021. Palaeontological Desktop Assessment for the proposed Lewis Prospecting Project on Portions of the Farms Lewis 535, Spence 537, Wright 538, Symthe 566, Bredenkamp 567, Brooks 568, Beaumont 569 and Murray 570, John Taolo Gaetsewe District Municipality in the Northern Cape Province. Banzai Environmental (Pty) Ltd, Bloemfontein.

Butler, E., 2021. Palaeontological Desktop Assessment for the Construction of the Ganspan Pering 132kV Powerline, Phokwane Local Municipality, Frances Baard District Municipality in the Northern Cape. Banzai Environmental (Pty) Ltd, Bloemfontein.

Butler, E., 2021. Palaeontological Desktop Assessment for the Longlands Prospecting Project on a Portion of the farm Longlands 350, Frances Baard District Municipality, Northern Cape Province. Banzai Environmental (Pty) Ltd, Bloemfontein.

Butler, E., 2021. Palaeontological Impact Assessment for the proposed development of 177 new units in the northern section of Mpongo Park in the Eastern Cape. Banzai Environmental (Pty) Ltd, Bloemfontein.

Butler, E., 2021. Palaeontological Desktop Assessment for the proposed Qhumanco Irrigation Project, Chris Hani District Municipality Eastern Cape. Banzai Environmental (Pty) Ltd, Bloemfontein.



Butler, E., 2021. Palaeontological Desktop Assessment for the proposed Raphuti Settlement Project on Portions of the Farm Weikrans 539KQ in the Waterberg District Municipality of the Limpopo Province. Banzai Environmental (Pty) Ltd, Bloemfontein.

Butler, E., 2021. Palaeontological Impact Assessment for the Senqu Rural Project, Joe Gqabi District Municipality, Senqu Local Municipality, in the Eastern Cape Province. Banzai Environmental (Pty) Ltd, Bloemfontein.

Butler, E., 2021. Palaeontological Impact Assessment for the proposed new Township development on portion of the farm Klipfontein 716 and farm Ceres 626 in Bloemfontein, Mangaung Metropolitan Municipality, Free State. Banzai Environmental (Pty) Ltd, Bloemfontein.

Butler, E., 2021. Palaeontological Desktop Assessment for the ECDOT Borrow Pits and WULA near Sterkspruit, Joe Gqabi District Municipality in the Eastern Cape Province. Banzai Environmental (Pty) Ltd, Bloemfontein.

Butler, E., 2021. Palaeontological Desktop Assessment for the proposed SANRAL Stone Crescent Embankment Stabilisation Works along the N2 on the farm Zyfer Fonteyn 253 (Portion 0, 11 and 12RE) and Palmiet Rivier 305 (Portion 34, 36) near Grahamstown in the Eastern Cape. Banzai Environmental (Pty) Ltd, Bloemfontein.

Butler, E., 2021. Palaeontological Impact Assessment for the Klein Rooipoort Trust Citrus Development, in the Eastern Cape. Banzai Environmental (Pty) Ltd, Bloemfontein.

Butler, E., 2021. Palaeontological Impact Assessment for the proposed Victoria West water augmentation project in the Northern Cape. Banzai Environmental (Pty) Ltd, Bloemfontein.

Butler, E., 2021. Palaeontological Desktop Assessment for the proposed Campbell Sewer, Internal Reticulation, Outfall Sewer Line and Oxidation Ponds, located on ERF 1, Siyancuma Local Municipality in the Northern Cape. Banzai Environmental (Pty) Ltd, Bloemfontein.

Butler, E., 2021. Palaeontological Desktop Assessment for the proposed Development and Upgrades within the Great Fish River Nature Reserve, Eastern Cape Province. Banzai Environmental (Pty) Ltd, Bloemfontein.

Butler, E., 2021. Palaeontological Desktop Assessment for proposed Parsons Power Park a portion of Erf 1. within the Nelson Mandela Bay Municipality in the Eastern Cape. Banzai Environmental (Pty) Ltd, Bloemfontein.

Butler, E., 2021. Palaeontological Desktop Assessment for the proposed expansion of the farming operations on part of portions 7 and 8 of farm Boerboonkraal 353 in the Greater Tubatse Local Municipality of Sekhukhune District, Limpopo Province. Banzai Environmental (Pty) Ltd, Bloemfontein.

Butler, E., 2021. Palaeontological Desktop Assessment to assess the proposed low-level pedestrian bridge, in Heilbron, Free State. Banzai Environmental (Pty) Ltd, Bloemfontein.

Butler, E., 2021. Palaeontological Desktop Assessment to assess the proposed township developments in Hertzogville, Malebogo, in Heilbron, Free State. Banzai Environmental (Pty) Ltd, Bloemfontein.

Butler, E., 2021. Palaeontological Impact Assessment for the proposed construction of Malangazana Bridge on Farm No.64 Nkwenkwana, Engcobo Local Municipality, Eastern Cape. Banzai Environmental (Pty) Ltd, Bloemfontein.

Butler, E., 2021. Palaeontological Impact Assessment to assess the proposed Construction of Middelburg Integrated Transport Control Centre on Portion 14 of Farm 81 Division of Middelburg, Chris Hani District Municipality in the Eastern Cape. Banzai Environmental (Pty) Ltd, Bloemfontein.

Butler, E., 2021. Palaeontological Desktop Assessment for the Witteberge Sand Mine on the remainder of farm Elandskrag Plaas 269 located in the Magisterial District of Laingsburg and Central Karoo District Municipality in the Western Cape. Banzai Environmental (Pty) Ltd, Bloemfontein.

Butler, E., 2021. Palaeontological Impact Assessment (PIA) to assess the proposed Agrizone 2, Dube Trade Port in KwaZulu Natal Province. Banzai Environmental (Pty) Ltd, Bloemfontein.



Butler, E., 2021. Palaeontological Desktop Assessment assessing the proposed Prospecting Right application without bulk sampling for the prospecting of Chrome ore and platinum group metals on the Remaining Extent of the farm Doornspruit 106, Registration Division: HO; North West Province. Banzai Environmental (Pty) Ltd, Bloemfontein.

Butler, E., 2022. Palaeontological Desktop Assessment for the proposed Ennerdale Extension 2 Township Establishment on the Undeveloped Part of Portion 134 of the Farm Roodepoort 3021Q, City of Johannesburg Metropolitan Municipality, Gauteng Province. Banzai Environmental (Pty) Ltd, Bloemfontein.

Butler, E., 2022. Palaeontological Desktop Assessment for the Construction of the ESKOM Mesong 400kV Loop-In Loop-Out Project, Ekurhuleni Municipality, Gauteng Province. Banzai Environmental (Pty) Ltd, Bloemfontein.

Butler, E., 2022. Palaeontological Desktop Assessment for the Proposed Vinci Prospecting Right Application on the Remainder of the Farm Vinci 580, ZF Mgcawu District Municipality, in the Northern Cape Province, Banzai Environmental (Pty) Ltd, Bloemfontein.

Butler, E., 2022. Palaeontological Desktop Assessment for the proposed Farm 431 Mining Right Application (MRA), near Postmasburg, ZF Mgcawu District Municipality, in the Northern Cape Province. Banzai Environmental (Pty) Ltd, Bloemfontein.

Butler, E., 2022. Palaeontological Impact Assessment for the Leeuw Braakfontein Colliery Expansion Project (LBC) in the Amajuba District Municipality, KwaZulu-Natal. Banzai Environmental (Pty) Ltd, Bloemfontein.

Butler, E., 2022. Palaeontological Desktop Assessment for the proposed reclamation of the 5L23 TSF in Ekurhuleni, Gauteng Province. Banzai Environmental (Pty) Ltd, Bloemfontein.

Butler, E., 2022. Palaeontological Desktop Assessment for the Proposed Mogalakwena Mine Infrastructure Expansion (near Mokopane in the Mogalakwena Local Municipality, Limpopo Province). Banzai Environmental (Pty) Ltd, Bloemfontein.

Butler, E., 2022. Palaeontological Desktop Assessment for the proposed 10km Cuprum to Kronos Double Circuit 132kV Line and Associated Infrastructure in Copperton in the Northern Cape. Banzai Environmental (Pty) Ltd, Bloemfontein.

Butler, E., 2022. Palaeontological Impact Assessment for the proposed Hoekplaas WEF near Victoria West in the Northern Cape. Banzai Environmental (Pty) Ltd, Bloemfontein.

Butler, E., 2022. Palaeontological Desktop Assessment (PDA) assessing the proposed Prospecting Right Application without bulk sampling for the Prospecting of Diamonds Alluvial (DA), Diamonds General (D), Diamonds in Kimberlite (DK) & Diamonds (DIA) on the Remaining Extent of the Farm Goede Hoop 547, Remaining Extent of the Farm 548, Remaining Extent of Portion 2 and Portion 3 of the Farm Skeyfontein 536, Registration Division: Hay, Northern Cape Province. Banzai Environmental (Pty) Ltd, Bloemfontein.

Butler, E., 2022. Palaeontological Impact Assessment for the proposed extension of Duine Weg Road between Pellsrus and Marina Martinique as well as a Water Use Authorisation (WUA) for the project. Banzai Environmental (Pty) Ltd, Bloemfontein.

Butler, E., 2022. Proposed Mimosa Residential Development and Associated Infrastructure on Fairview Erven, in Gqeberha (Port Elizabeth), Nelson Mandela Bay Metropolitan Municipality, Eastern Cape Province. Banzai Environmental (Pty) Ltd, Bloemfontein.

Butler, E., 2022. Palaeontological Impact Assessment for the Witteberge Sand Mine on the remainder of farm Elandskrag Plaas 269 located in the Magisterial District of Laingsburg and Central Karoo District Municipality in the Western Cape. Banzai Environmental (Pty) Ltd, Bloemfontein.

Butler, E., 2022. Palaeontological Desktop Assessment to assess the Palaeontology for the Somkhele Anthracite Mine's Prospecting Right Application, on the Remainder of the Farm Reserve no 3 No 15822 within the uMkhanyakude District Municipality and the Mtubatuba Local Municipality, KwaZulu Natal. Banzai Environmental (Pty) Ltd, Bloemfontein.



Butler. E. 2022. Palaeontological Desktop Assessment to assess the proposed Altina 120 MW Solar Photovoltaic (PV) Project near Orkney in the Free State

Butler. E. 2022. Palaeontological Desktop Assessment to assess the proposed SERE Solar Photovoltaic Plant Phase 1A and associated infrastructure in the Western Cape Province.

Butler. E. 2022. Palaeontological Impact Assessment for the proposed development of a 10 MW Solar Photovoltaic (PV) Plant and associated grid connection infrastructure on Portion 9 of the Farm Little Chelsea 10, Eastern Cape Province.

Butler. E. 2022. Palaeontological Desktop Assessment to assess the proposed Dominion 1 Solar Park, located on the Remaining Extent of Portion 18 of Farm 425, near Klerksdorp within the North-West Province.

Butler. E., 2022. Palaeontological Desktop Assessment to assess the proposed Dominion 2 Solar Park, located on the Remaining Extent of Portion 8 of Farm 425, near Klerksdorp within the North-West Province.

Butler. E., 2022. Palaeontological Desktop Assessment to assess the proposed Dominion 3 Solar Park, located on the Remaining Extent of Portion 11 of Farm 425, and Remaining Extent of Portion 31 of Farm 425 near Klerksdorp within the North-West Province

Butler. E., 2022. Palaeontological Impact Assessment to assess the Delta Solar Power Plant on the remaining extent of the farm Kareefontein No. 340, Dr Ruth Segomotsi Mompati District Municipality, Lekwa-Teemane Local Municipality near Bloemhof in the North West Province

Butler. E., 2022. Palaeontological Impact Assessment to assess the Sonneblom Solar Power Plant (SPP) on Portion 1 of the farm Blydschap No. 504 within the Mangaung Metropolitan Municipality, southeast of Bloemfontein in the Free State.

Butler. E., 2022. Palaeontological Impact Assessment for the proposed Naos Solar PV One Project near Viljoenskroon in the Free State.

Butler. E., 2022. Palaeontological Impact Assessment for the proposed Naos Solar PV Two Project near Viljoenskroon in the Free State.

Butler. E., 2022. Palaeontological Impact Assessment for the proposed Naos Solar PV Two Project near Viljoenskroon in the Free State

Butler. E., 2022. Palaeontological Impact Assessment for the Ngwedi Solar Power near Viljoenskroon in the Free State.

Butler. E., 2022. Palaeontological Impact Assessment for the Noko Solar Power Plant and power line near Orkney in the North West.

Butler. E., 2022. Palaeontological Impact Assessment for the Proposed Power Line as part of the Paleso Solar Power Plant near Viljoenskroon in the Free State

Butler. E., 2022. Palaeontological Impact Assessment for the Thakadu Solar Plant which near Viljoenskroon in the Free State

Butler. E., 2022. Palaeontological Impact Assessment of the Kentani, Braklaagte, Klipfontein, Klipfontein 2, Leliehoek and Sonobloem PV Facilities located near Dealsville in the Free State Province

Butler. E., 2022. Palaeontological Impact Assessment for the proposed Harvard 1 Solar Photovoltaic (PV) facility on Portion 5 of Farm Spes Bona no 2355, Mangaung Metropolitan Municipality in the Free State.

Butler. E., 2022. Palaeontological Impact Assessment for proposed Harvard 2 Solar Photovoltaic (PV) facility on Portion 8 of Farm Spes Bona No 2355, Mangaung Metropolitan Municipality in the Free State.

Butler. E., 2022. Palaeontological Impact Assessment for the proposed Doornrivier Solar 1, southwest of Matjhabeng (formerly Virginia) in the Free State



Butler. E., 2022. Palaeontological Desktop Assessment for the proposed Leeuwbosch PV solar photovoltaic (PV) plant and associated infrastructure on Portion 37 of the Farm Leeuwbosch No. 44 near Leeudoringstad within the Maquassi Hills Local Municipality in the Dr Kenneth Kaunda District Municipality in the North West Province.