

ANNEXURE A

DROSTDY AND STRETCH'S COURT FABRIC ANALYSIS

DROSTDY FABRIC ANALYSIS METHODOLOGY

The fabric analysis for the Drostdy Hotel was conducted by the Architects Munnik Visser Black & Fish during the extensive restoration conducted on the building during the 1970s.

A set of floor plans were drawn up for the various stages of intervention and styles which the building had been exposed to from 1804 to the time of the restoration. These are illustrated in figures 1, 2, 3 and 4 on the following pages.

Figure 5 is the culmination of the information derived in figures 1 to 4, which illustrates the remaining historic wall fabric of the original 1804 structure, prior to the new work done during the 1970s restoration.

Figure 6 illustrates the existing as-built footprint and internal layout of the building, post restoration.

Figure 7 is a 2012 analysis of all the previous layouts, which results in an indicative sketch of the remaining historic wall fabric as the building stands today.

All of the above assist in the identification of areas where substantial intervention to this building has resulted in the historic fabric being compromised. This in turn identifies areas for possible new intervention during the 2013 property upgrade.

DROSTDY

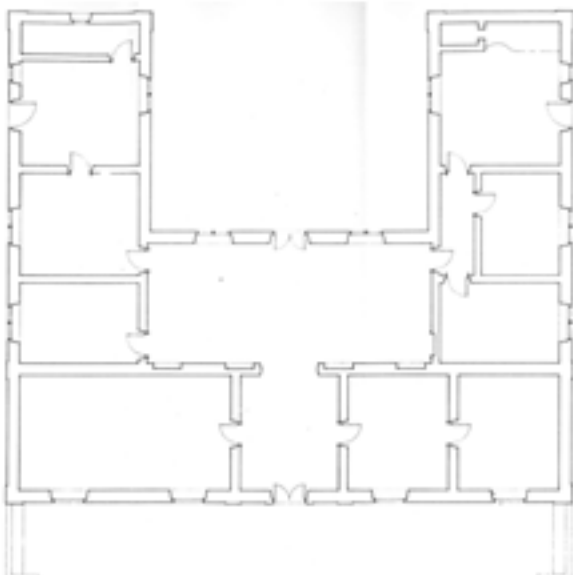


FIGURE 1: Drosty magistrate building footprint c. 1804 to 1846
[SAHRA: 3/K/Graaff/1]

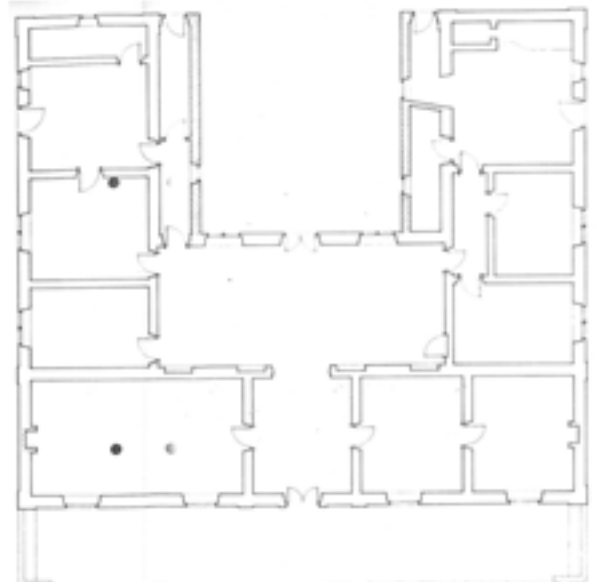


FIGURE 2: Drosty residential building and first hotel alterations c. 1847
[SAHRA: 3/K/Graaff/1]



FIGURE 3: Drosty Hotel Victorian additions c. 1879 [SAHRA: 3/K/Graaff/1]

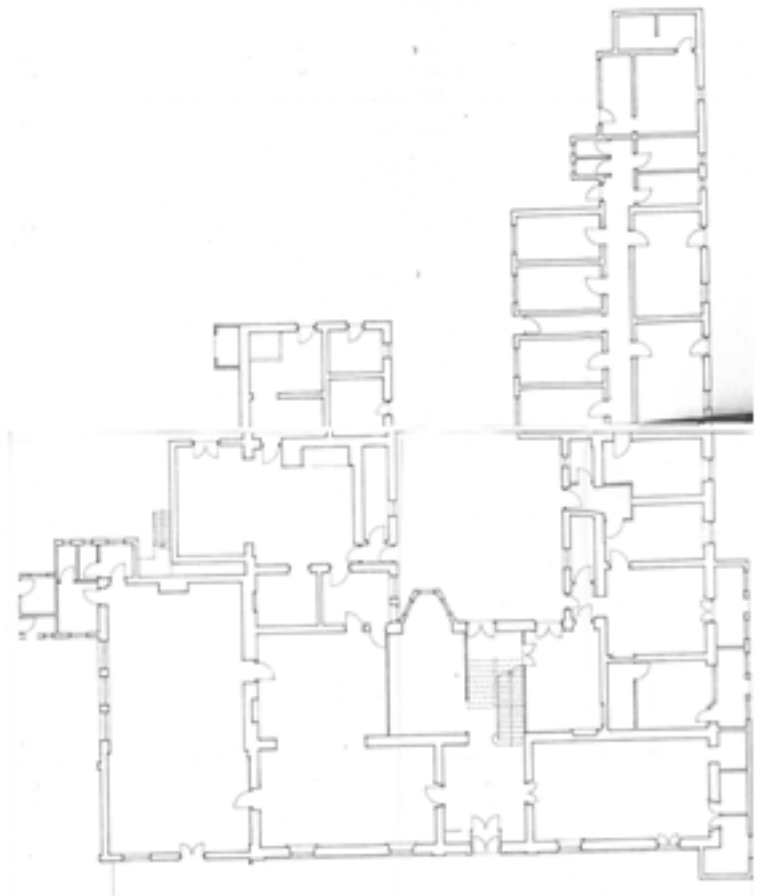


FIGURE 4: Drosty Hotel Victorian double storey footprint c. early to mid 1900s [SAHRA: 3/K/Graaff/1]

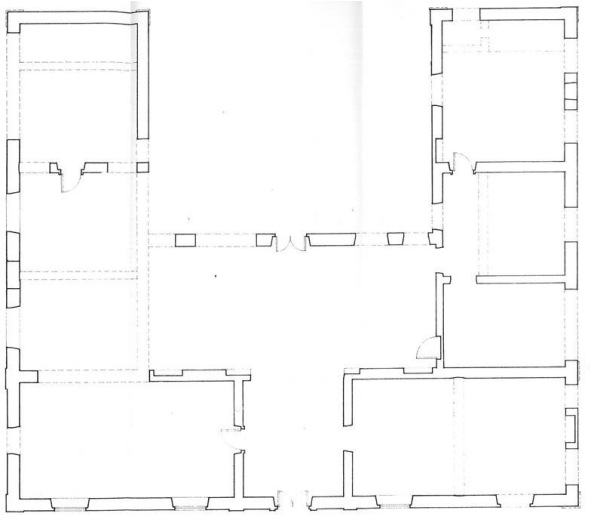


FIGURE 5: The 1974 fabric analysis of the Drostdy Hotel, indicating the remaining historic fabric of the original 1804 structure. Broken lines indicate walls which were removed [SAHRA: 3/K/Graaff/1]

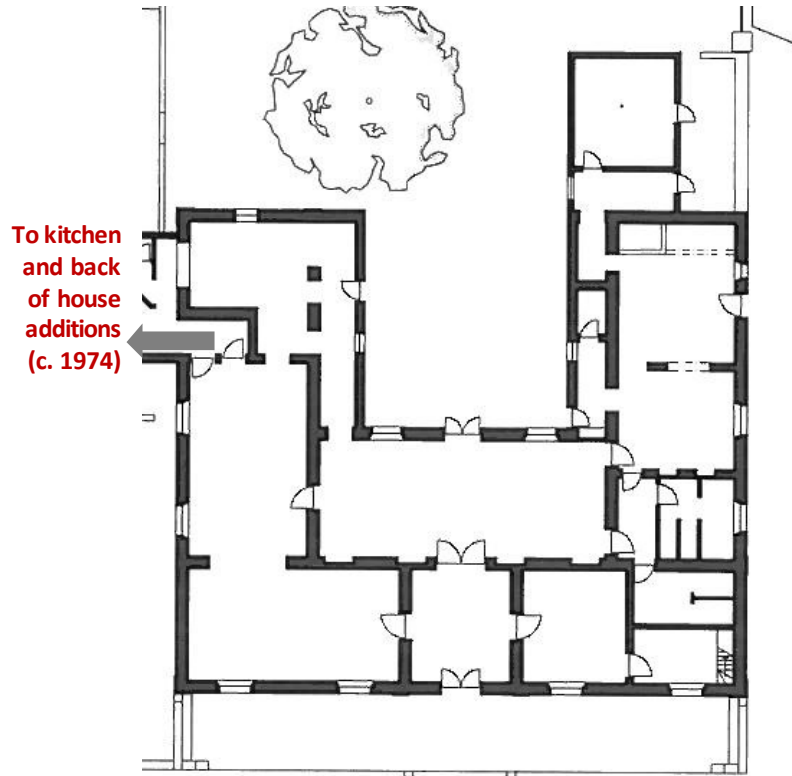


FIGURE 6: Drostdy Hotel existing footprint c. 2012 [dhk Architects]

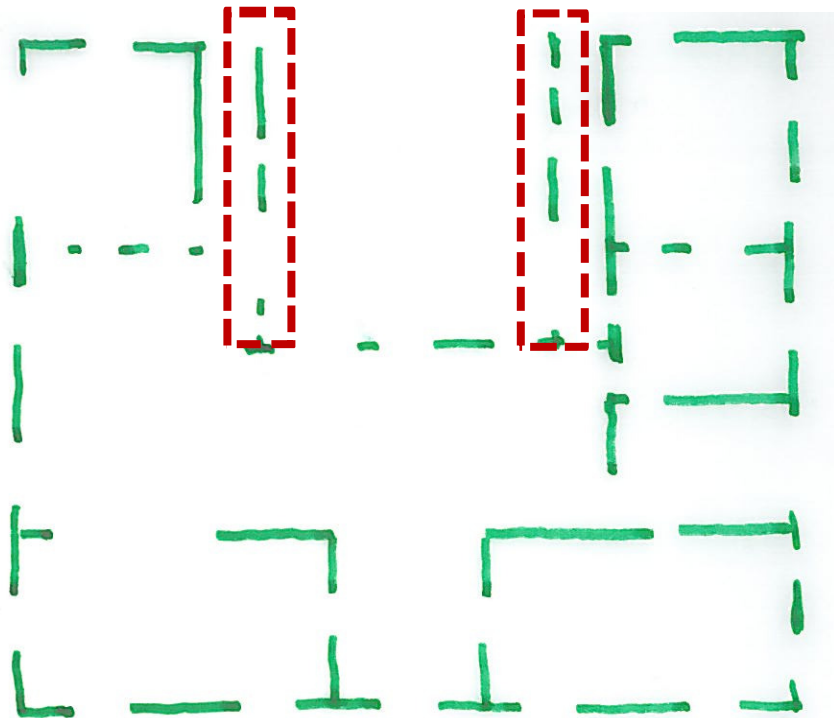


FIGURE 7: Drostdy Hotel remaining historic wall fabric c. 1804 & 1847 [Urban Concepts]

KEY



Remainder 1847 flat roof addition

ANNEXURE A DROSTDY BUILDING FABRIC ANALYSIS

DROSTDY EXTERIOR IMAGES

The following exterior images of the Drostdy are illustrated clockwise to the layout of the building, from the front elevation.

[Photographs by Urban Concepts]



East elevation [front]



Front door detail [east elevation]



South elevation [dining hall internal & Camdeboo courtyard]



West elevation [courtyard and garden]



Roof structure [facing east]



North elevation [ladies bar and ablutions]

ANNEXURE A DROSTDY BUILDING FABRIC ANALYSIS

DROSTDY INTERIOR IMAGES

The following interior images of the Drostdy illustrate the interior of the south wing, from the entrance foyer.

[Photographs by Urban Concepts]



Foyer [mid east wing looking west]



Foyer to lounge and courtyard access door {looking west}



Typical ceiling and light fitting detail [entrance foyer to dining hall]



L-shaped dining hall [left looking south; right looking west towards kitchen and Wijnkamer]



Passage to Wijnkamer [south wing adjacent to courtyard]



Wijnkamer [south wing adjacent to kitchen]



Wijnkamer [looking north towards passage and access door to courtyard]

ANNEXURE A DROSTDY BUILDING FABRIC ANALYSIS

DROSTDY INTERIOR IMAGES

The following interior images of the Drostdy illustrate the centre, north wing and north side of the east wing (front).

[Photographs by Urban Concepts]



Lounge [looking south]



Interior door detail [to ladies bar]



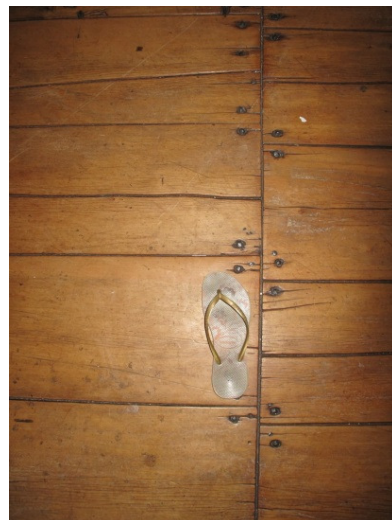
Lounge [looking north towards ladies bar and WC]



Lounge door to courtyard detail



Lounge window to courtyard detail



Typical internal floor detail



Ladies bar [looking west]



Ladies bar ceiling detail [reed in hearth room]



Reception room [looking south, towards entrance foyer]