

# ANNEXURE A STRETCH'S COURT FABRIC ANALYSIS

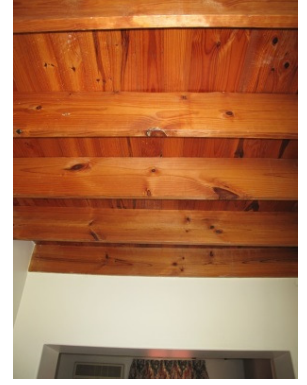
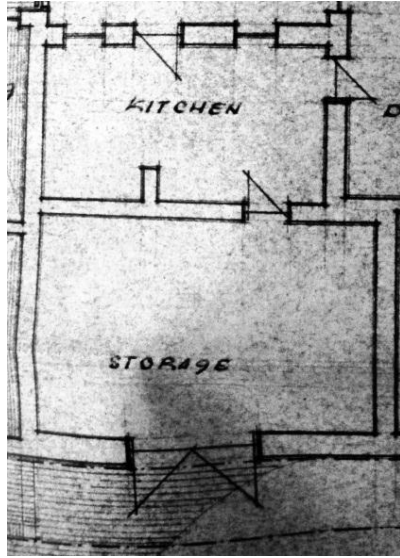
## >> COTTAGE 1 (C.1858)

>> Degree of Intactness: 1  
 >> Recommended Grading: IIIB

### FOOTPRINT 1968



Front (north) facade

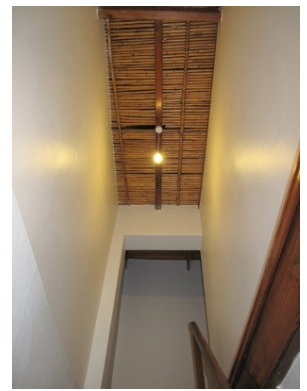
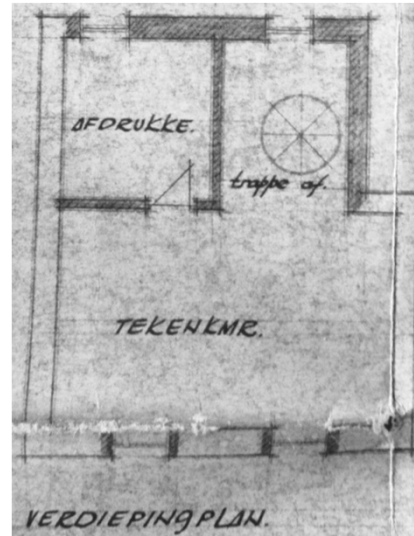
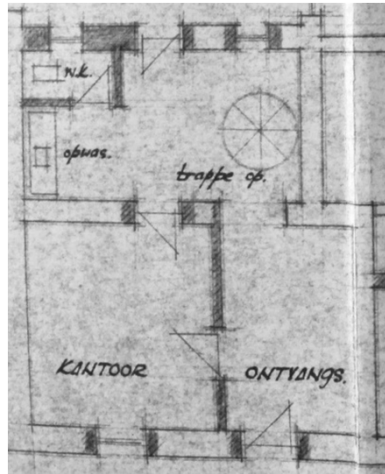


Rear bedroom A: Pine ceiling & floor bedroom C (carpeted)

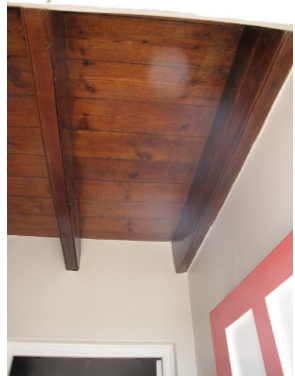


Back (south) facade

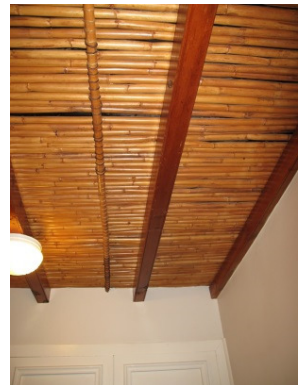
### FOOTPRINT 1969



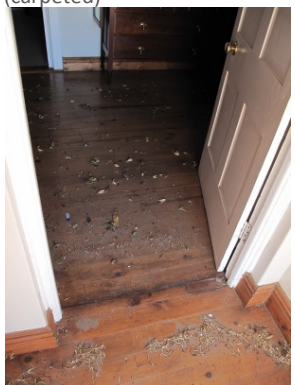
Reed stairwell ceiling



Oregon foyer and bedroom A ceiling; bedroom B floor (carpeted)



Bedroom B: reed ceiling



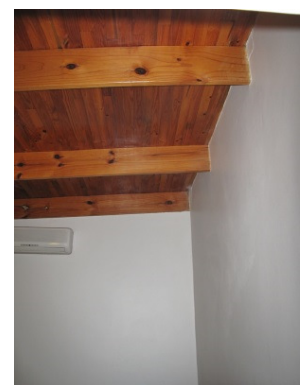
Foyer and bedroom A Oregon Pine floor



Bedroom B: reed ceiling with Oregon Pine beams, carpeted Oregon Pine floor



Bedroom A: Oregon Pine beams and ceiling



Bedroom C: Pine ceiling

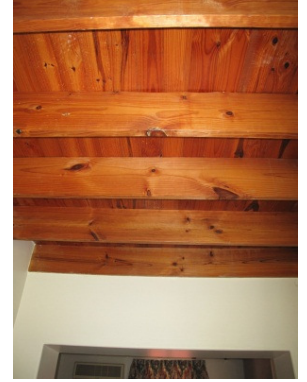
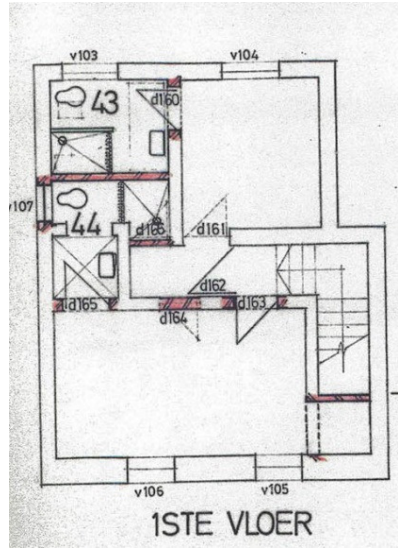
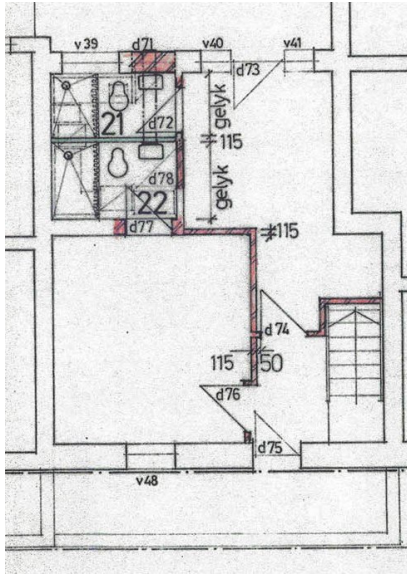
# ANNEXURE A STRETCH'S COURT FABRIC ANALYSIS

## >> COTTAGE 1 CONTINUED



Front (north) facade

### FOOTPRINT 1975

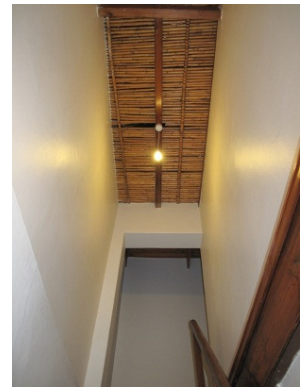
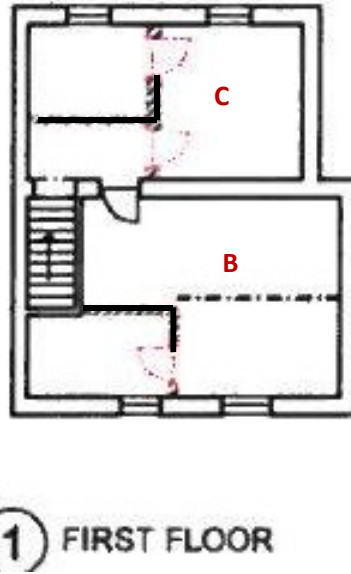
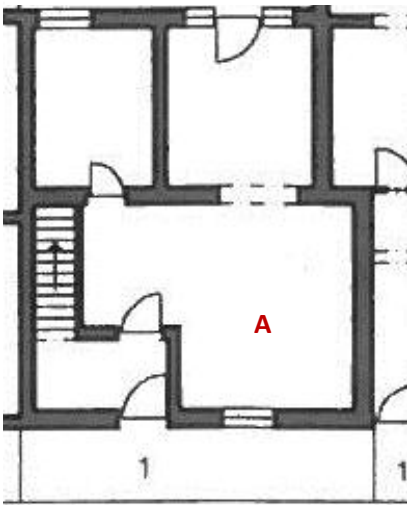


Rear bedroom A: Pine ceiling & floor bedroom C (carpeted)



Back (south) facade

### FOOTPRINT 2012

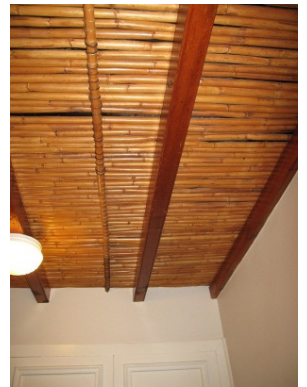
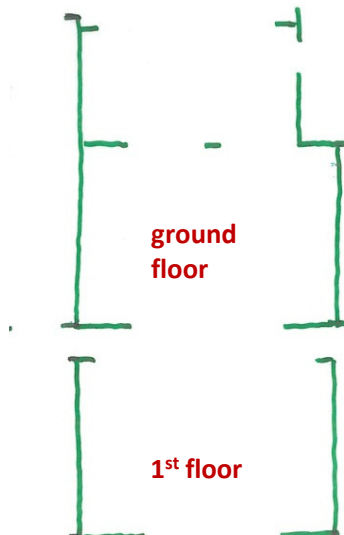


Reed stairwell ceiling



Oregon foyer and bedroom A ceiling; bedroom B floor (carpeted)

### 2012 REMAINING HISTORIC FABRIC



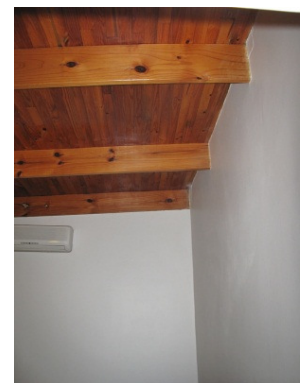
Bedroom B: reed ceiling



Foyer and bedroom A Oregon Pine floor



Bedroom A: Oregon Pine beams and ceiling



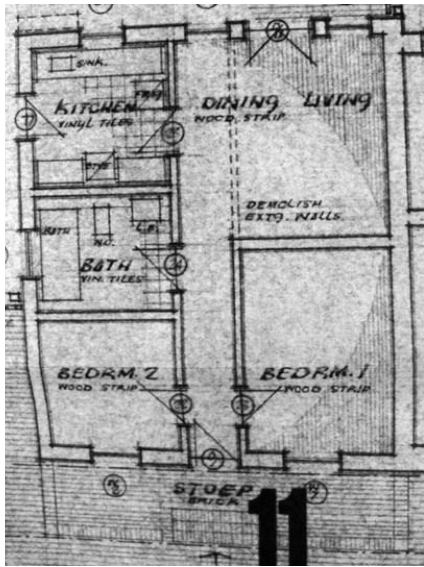
Bedroom C: Pine ceiling

# ANNEXURE A STRETCH'S COURT FABRIC ANALYSIS

## >> COTTAGE 2 (C.1858)

>> Degree of Intactness: 3  
 >> Recommended Grading: IIIC

### FOOTPRINT 1968

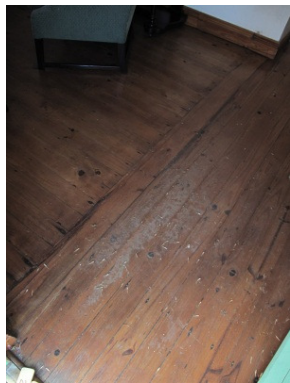
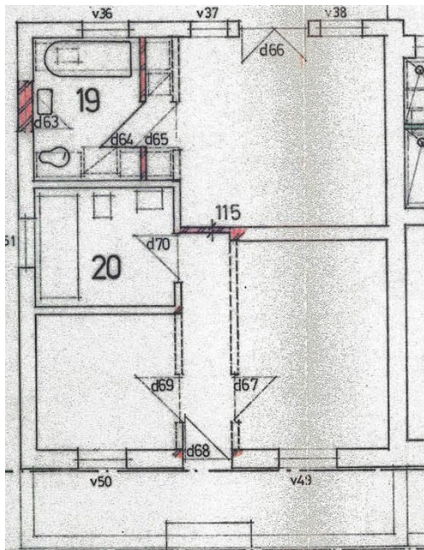


Bedroom A (north) plaster board ceiling, Oregon Pine wood strip floor



Front (north) facade

### FOOTPRINT 1975

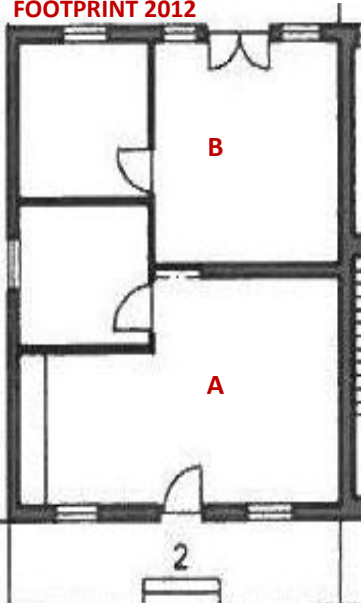


Bedroom A: Oregon Pine wood strip floor



Back (south) facade

### FOOTPRINT 2012

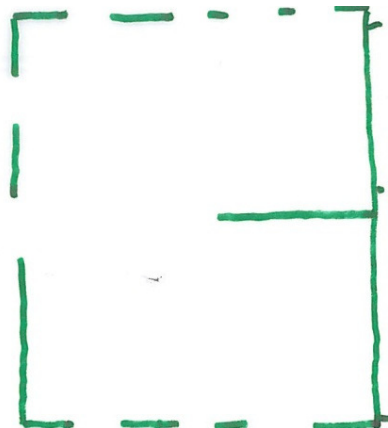


Bedroom B door (south)



Side (east) facade

### 2012 REMAINING HISTORIC FABRIC



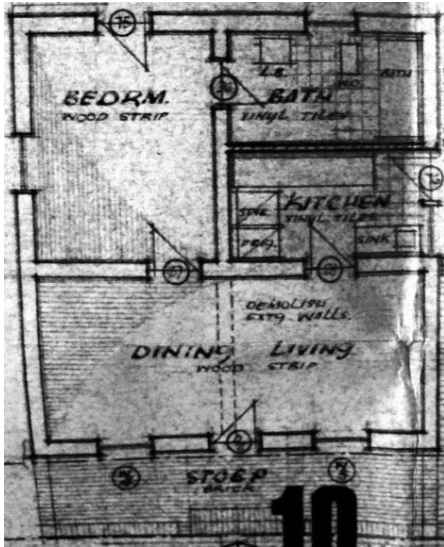
Bedroom B: carpeted concrete floor, plaster board ceiling

# ANNEXURE A STRETCH'S COURT FABRIC ANALYSIS

## >> COTTAGE 3 (C.1858)

>> Degree of Intactness: 1  
 >> Recommended Grading: IIIB

### FOOTPRINT 1968

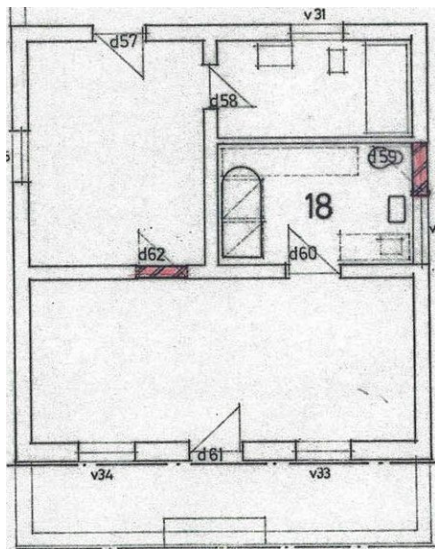


Bedroom A (north) Oregon Pine ceiling and wood strip floor



Front (north) facade

### FOOTPRINT 1975

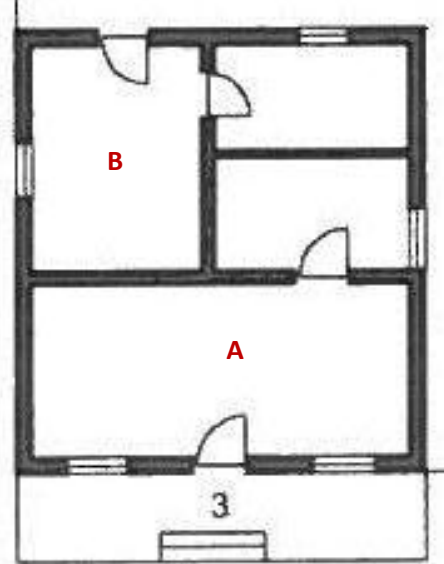


Bedroom B: Oregon Pine wood strip floor

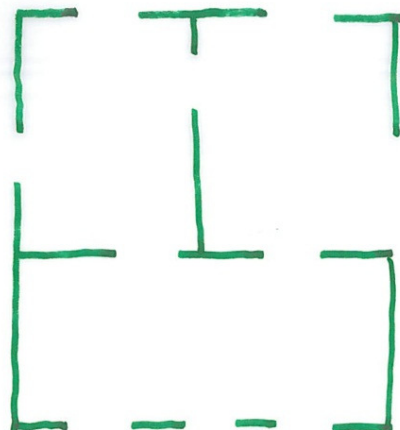


Back (south) facade

### FOOTPRINT 2012



### 2012 REMAINING HISTORIC FABRIC



Side (east) facade



Bedroom B: Pine wood strip floor, plaster board ceiling