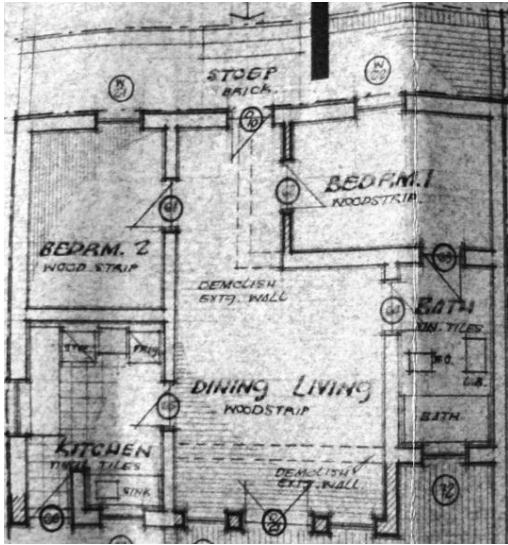


ANNEXURE A STRETCH'S COURT FABRIC ANALYSIS

>> COTTAGE 12 (C.1858)

>> Degree of Intactness: 1
 >> Recommended Grading: IIIB

FOOTPRINT 1968



Bedroom A: Oregon Pine ceiling



Bedroom A: Oregon Pine wood strip floor

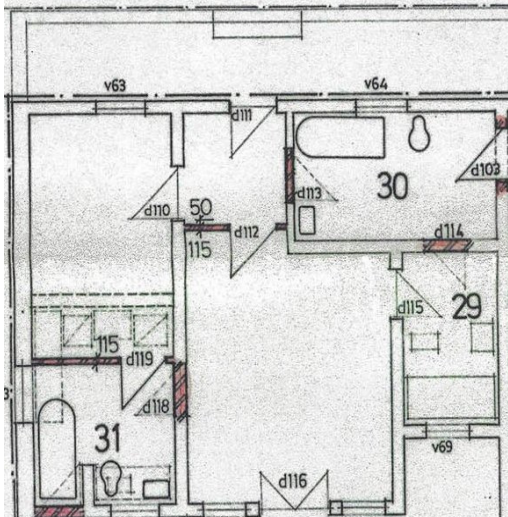


Bedroom B: Oregon Pine ceiling



Bedroom C: Oregon Pine ceiling

FOOTPRINT 1975



Front (south) facade



Back (north) facade



Side (east) facade



Bedroom B & C: Pine wood strip floor (patched in part)

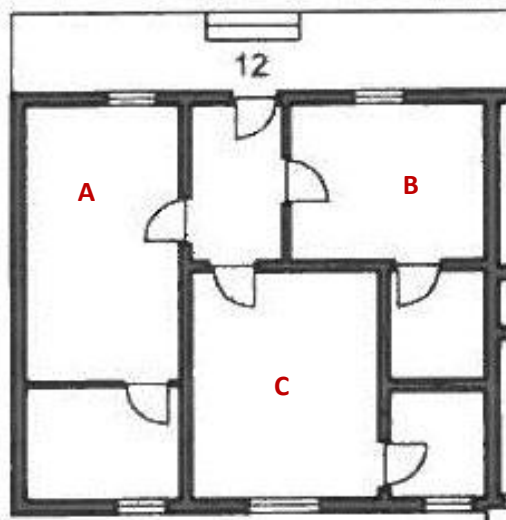
ANNEXURE A STRETCH'S COURT FABRIC ANALYSIS

>> COTTAGE 12 CONTINUED

FOOTPRINT 2012

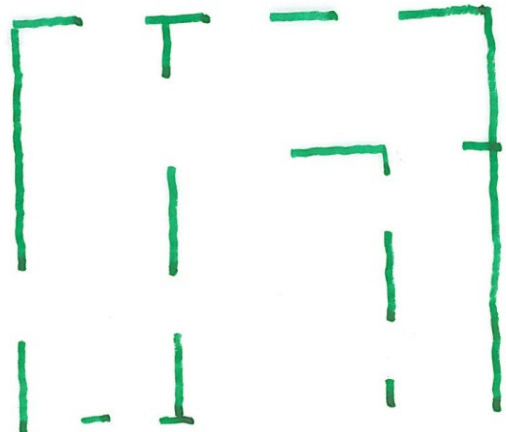


Bedroom A: Oregon Pine ceiling



Bedroom A: Oregon Pine wood strip floor

2012 REMAINING HISTORIC FABRIC



Bedroom B: Oregon Pine ceiling



Bedroom C: Oregon Pine ceiling



Front (south) facade



Back (north) facade



Side (east) facade



Bedroom B & C: Pine wood strip floor (patched in part)

ANNEXURE A STRETCH'S COURT FABRIC ANALYSIS

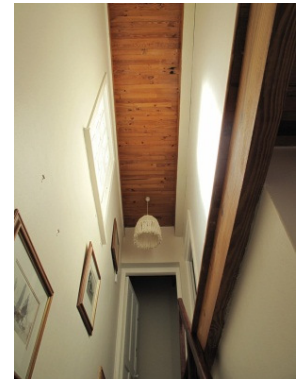
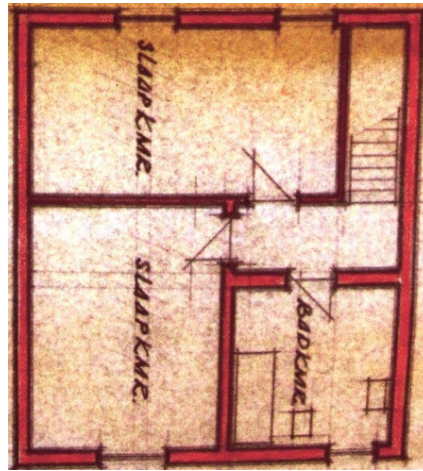
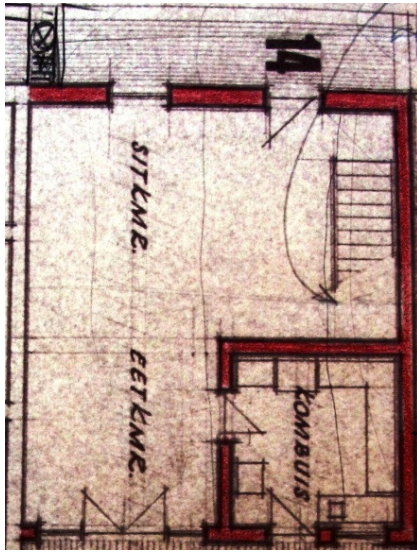
>> COTTAGE 13 (C.1968)

>> Degree of Intactness: n/a
 >> Recommended Grading: IIIC

FOOTPRINT 1968



Front (south) facade

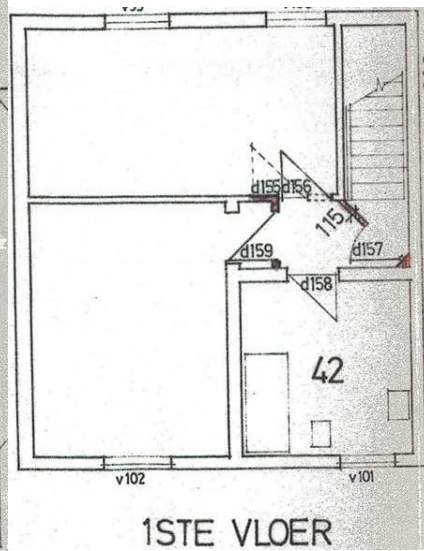
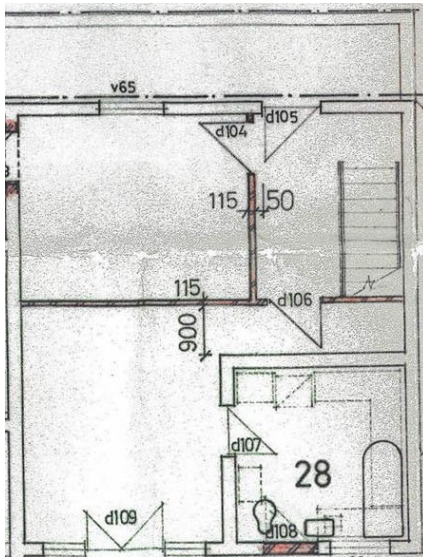


Stairwell: Pine ceiling

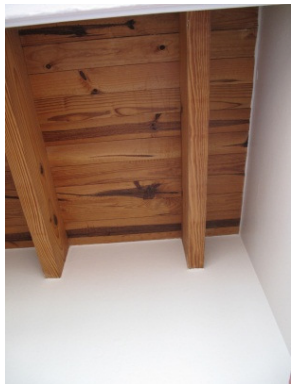


Side (west) facade

FOOTPRINT 1975



Meranti staircase



Foyer: Pine ceiling; and floor
 bedroom B



Bedroom B: Oregon Pine
 ceiling



Bedroom A: Oregon Pine
 floor, plaster board ceiling



Bedroom C: Pine ceiling

ANNEXURE A STRETCH'S COURT FABRIC ANALYSIS

>> COTTAGE 13 CONTINUED



Side (west) facade



Back (north) facade



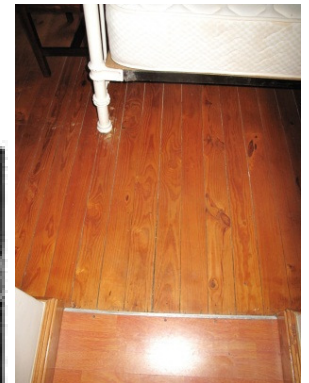
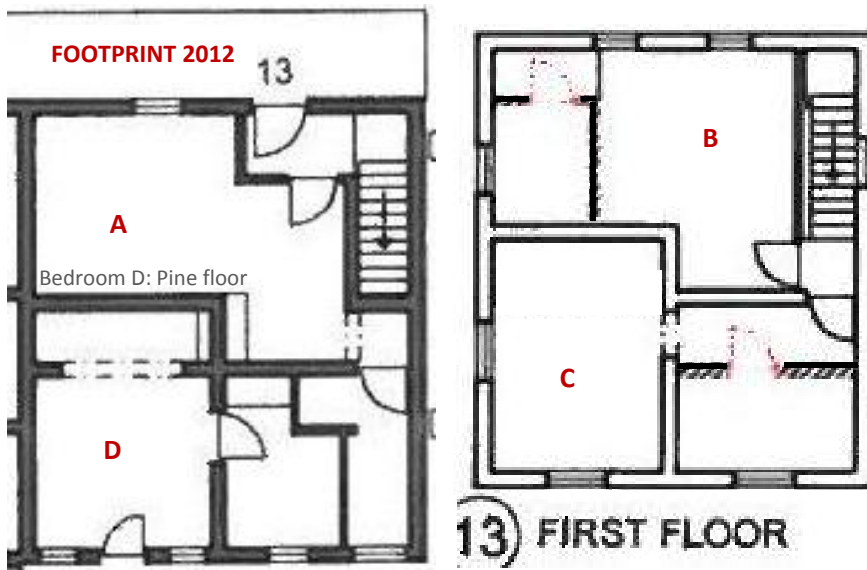
Foyer: Oregon Pine floor



Bedroom B: Pine floor



Bedroom D: Pine floor



Bedroom C: Oregon Pine and laminate mix floor



Bedroom D: Pine floor, plaster board ceiling

NOTE: NO HISTORIC FABRIC EXISTS