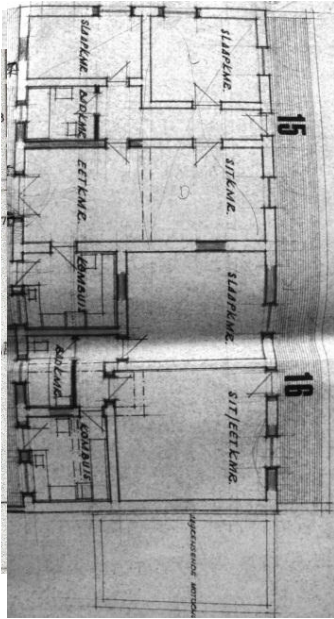


# ANNEXURE A STRETCH'S COURT FABRIC ANALYSIS

## >> COTTAGE 14 (C.1858)

>> Degree of Intactness: 1  
>> Recommended Grading: IIIB

### FOOTPRINT 1968



Bedroom B: Oregon Pine passage ceiling



Front (west) façade to rooms D & E

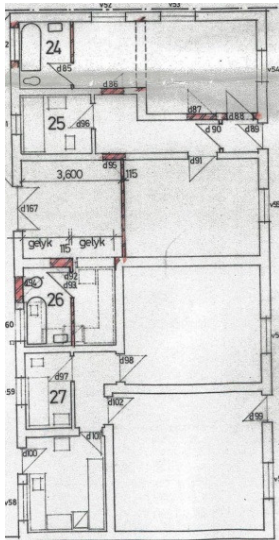


Bedroom B: Oregon Pine passage floor



Front (west) façade to rooms A & B

### FOOTPRINT 1975



Foyer D & E: laminate floor



Back (east) façade to room C



Bedroom E: matchboard ceiling

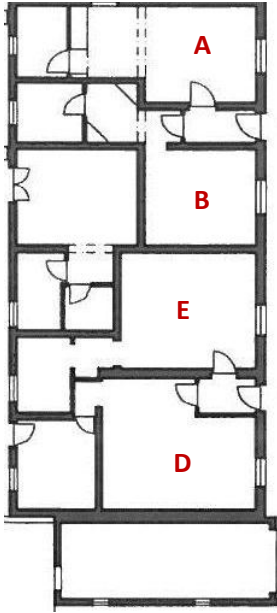


Side (south) facade

# ANNEXURE A STRETCH'S COURT FABRIC ANALYSIS

## >> COTTAGE 14 CONTINUED

### FOOTPRINT 2012



Foyer A & B: Pine ceiling



Front (west) façade to rooms D & E

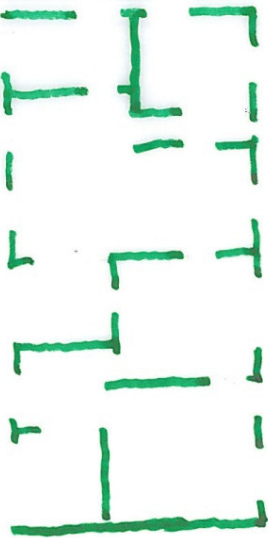


Bedroom A: Oregon beams and reed ceiling



Front (west) façade to rooms A & B

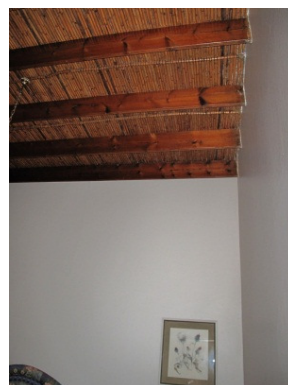
### 2012 REMAINING HISTORIC FABRIC



Bedroom A: Oregon Pine and Pine patched floor



Back (east) façade to room C



Bedroom B: Oregon beams and reed ceiling



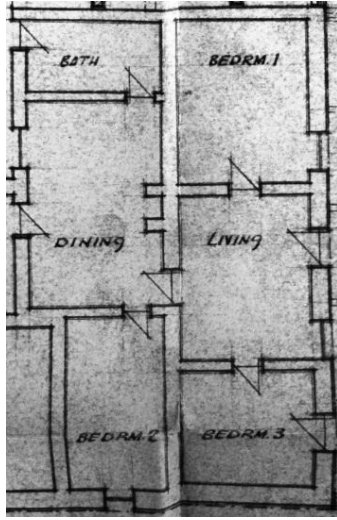
Side (south) facade

# ANNEXURE A STRETCH'S COURT FABRIC ANALYSIS

## >> COTTAGE 15 (C.1858)

>> Degree of Intactness: 3  
 >> Recommended Grading: IIIC

### FOOTPRINT 1968



Passage: Oregon Pine ceiling

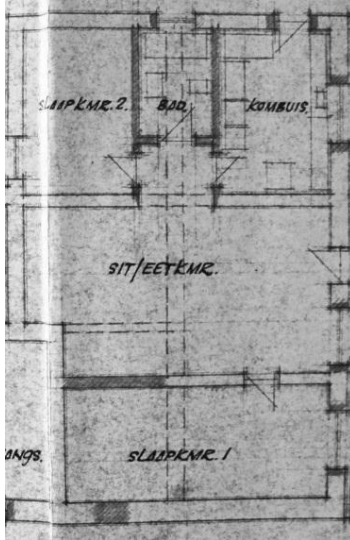


Front (north) façade

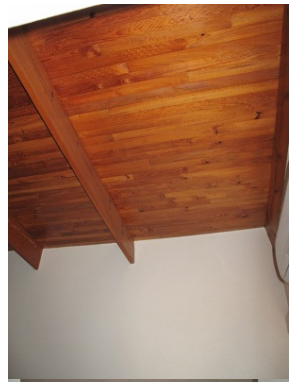


Passage: Oregon Pine wood strip floor

### FOOTPRINT 1969



Back (south) façade



Bedroom A: Oregon Pine ceiling



Side (west) façade on Bourke Street



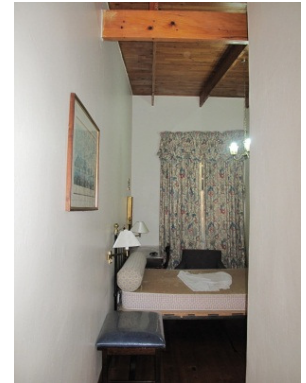
Bedroom B: Oregon Pine ceiling, Oregon Pine floor



Bedroom A: Oregon Pine ceiling, carpeted wood (Oregon) floor



Bedroom A passage: Oregon Pine ceiling and floor



Bedroom C: Oregon Pine ceiling and floor

# ANNEXURE A STRETCH'S COURT FABRIC ANALYSIS

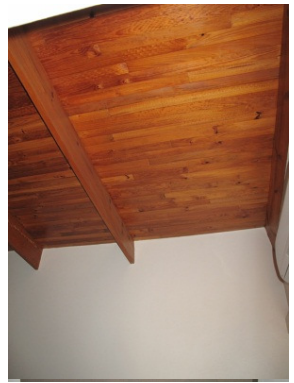
## >> COTTAGE 15 CONTINUED



Passage: Oregon Pine ceiling



Passage: Oregon Pine wood strip floor

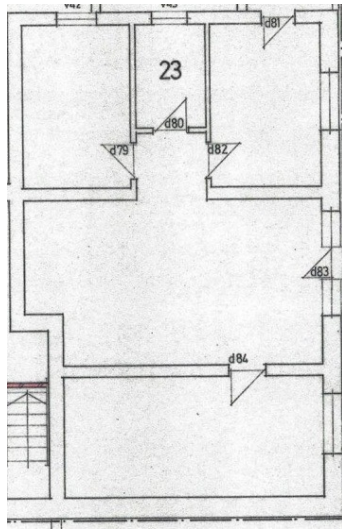


Bedroom A: Oregon Pine ceiling

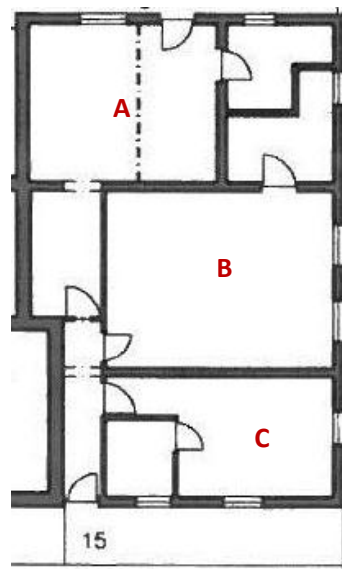


Bedroom B: Oregon Pine ceiling, Oregon Pine floor

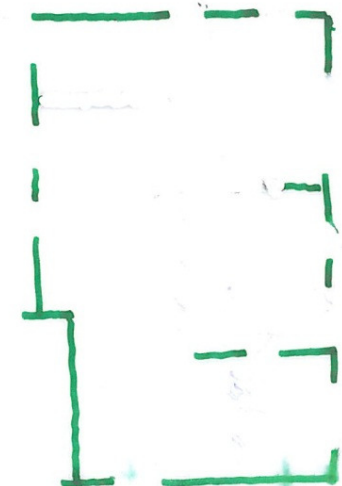
### FOOTPRINT 1975



### FOOTPRINT 2012



### 2012 REMAINING HISTORIC FABRIC



Front (north) façade



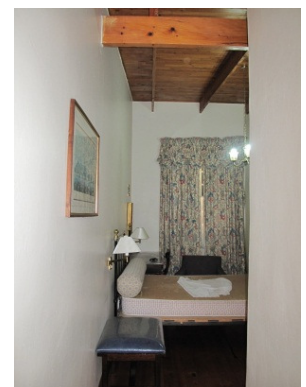
Back (south) façade



Side (west) façade on Bourke Street



Bedroom A passage: Oregon Pine ceiling and floor



Bedroom C: Oregon Pine ceiling and floor