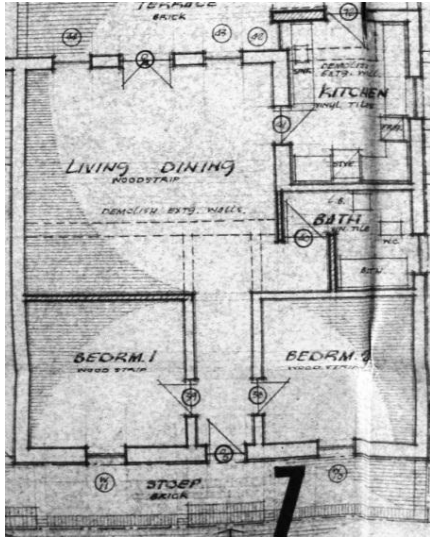


ANNEXURE A STRETCH'S COURT FABRIC ANALYSIS

>> COTTAGE 6 (C.1858)

>> Degree of Intactness: 3
 >> Recommended Grading: IIIC

FOOTPRINT 1968



Foyer: Pine ceiling

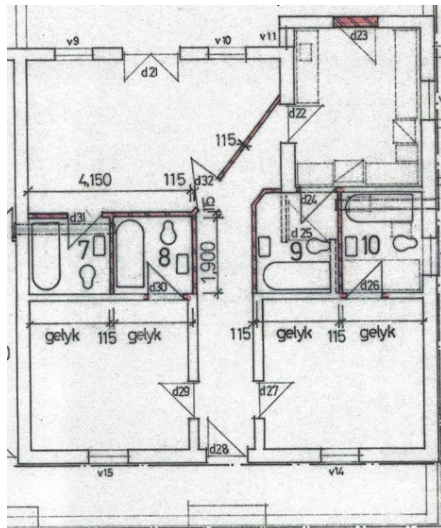


Front (north) facade



Foyer / passage: Oregon Pine wood strip floor

FOOTPRINT 1975



Bedroom A: Oregon Pine ceiling



Back (south) facade



Bedroom C: Pine ceiling

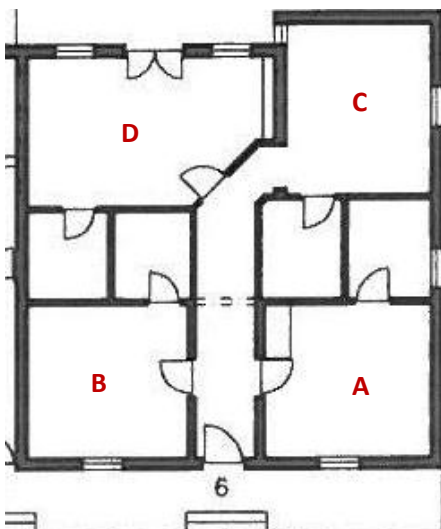


Bedroom D: Pine ceiling



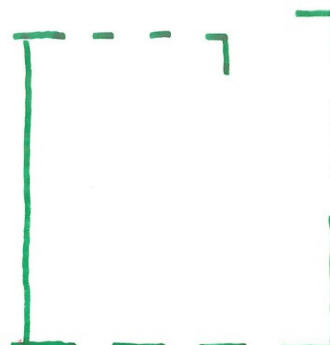
Bedroom A: Oregon Pine wood strip floor

FOOTPRINT 2012



Bedroom C: carpeted concrete floor

2012 REMAINING HISTORIC FABRIC



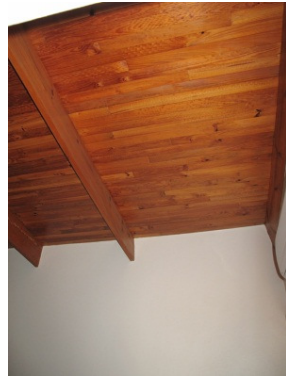
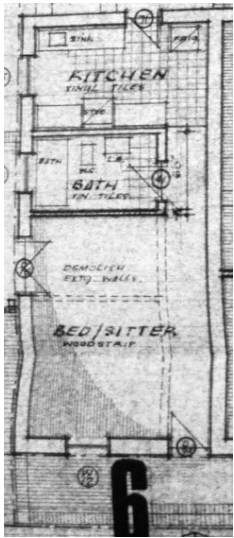
Bedroom D: Oregon Pine wood strip floor

ANNEXURE A STRETCH'S COURT FABRIC ANALYSIS

>> COTTAGE 7 (C.1858)

>> Degree of Intactness: 3
 >> Recommended Grading: IIIC

FOOTPRINT 1968



Bedroom A: Oregon Pine ceiling

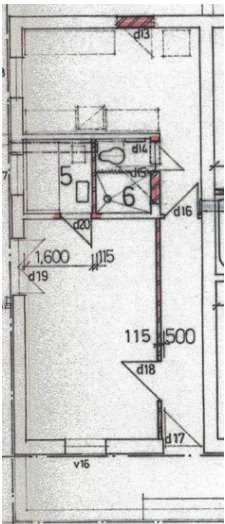


Foyer / passage: Pine ceiling



Front (north) facade

FOOTPRINT 1975



Bedroom A: Oregon Pine wood strip, and carpeted concrete floor

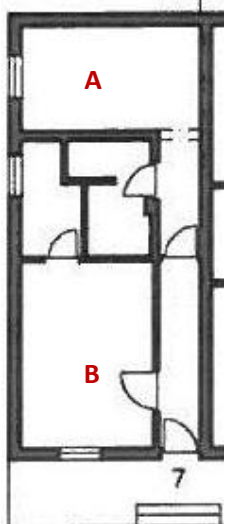


Foyer / passage: Oregon Pine wood strip floor

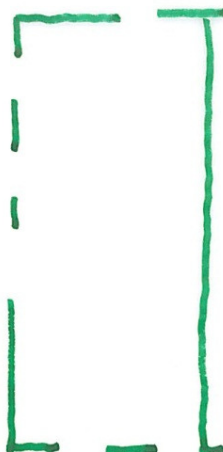


Side (east) facade

FOOTPRINT 2012



2012 REMAINING HISTORIC FABRIC



Back (south) facade



Bedroom B: Oregon Pine ceiling



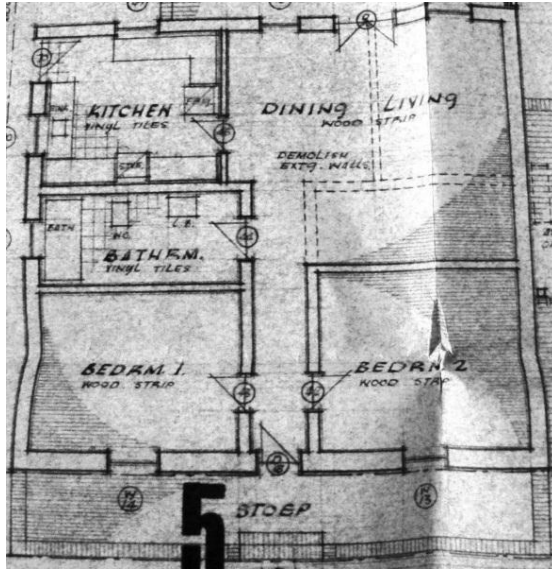
Bedroom B: Oregon Pine wood strip floor

ANNEXURE A STRETCH'S COURT FABRIC ANALYSIS

>> COTTAGE 8 (C.1858)

>> Degree of Intactness: 3
 >> Recommended Grading: IIIC

FOOTPRINT 1968



Foyer / passage Pine ceiling

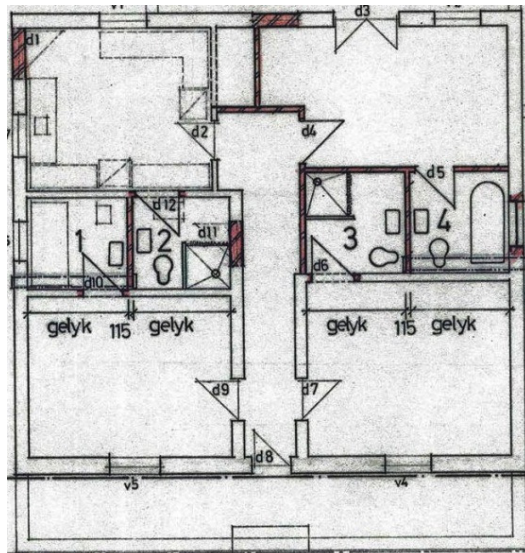


Foyer / passage: Oregon Pine wood strip floor



Back passage: Oregon Pine ceiling and beams

FOOTPRINT 1975



Front (north) facade



Back (south) facade



Side (east) facade

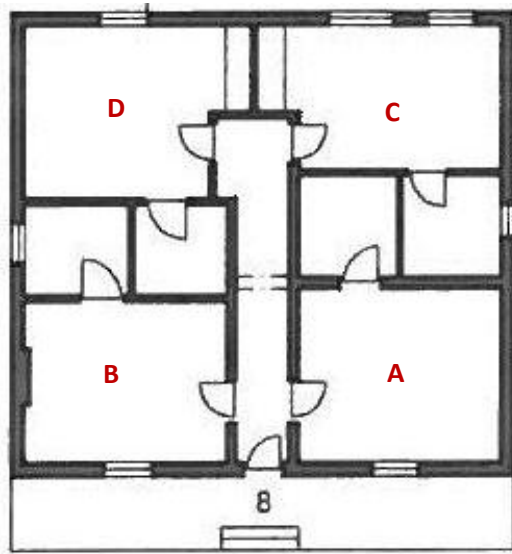


Side (west) facade

ANNEXURE A STRETCH'S COURT FABRIC ANALYSIS

>> COTTAGE 8 CONTINUED

FOOTPRINT 2012



Bedroom B: Oregon Pine ceiling and beams



Bedroom A: Oregon Pine ceiling and beams

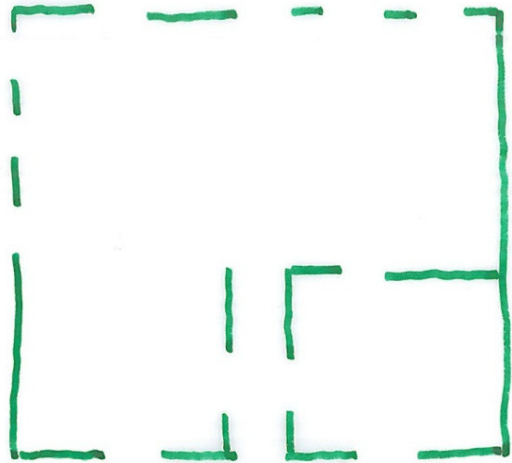


Bedroom B: Oregon Pine wood strip floor



Bedroom A: Oregon Pine wood strip floor

2012 REMAINING HISTORIC FABRIC



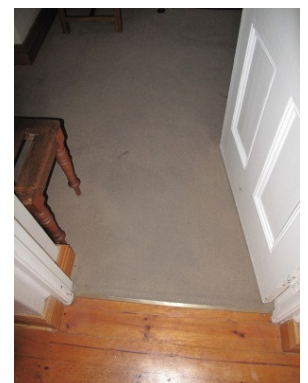
Bedroom C: Oregon Pine ceiling and beams



Bedroom D: Oregon Pine ceiling and beams



Bedroom C: Oregon Pine wood strip floor



Bedroom D: carpeted concrete floor