

14 February 2013

South African Heritage Resources Agency  
111 Harrington Street  
PO Box 4637, Cape Town 8000,  
South Africa



**Attention:** Kathryn Smuts - Heritage Officer: Archaeology, Palaeontology and Meteorites

**RE: Maanhaarberg 132kV**

Your enquiry dated 30 January 2013 has reference.

The two farmsteads in question Zwartkoppies Farmstead and Badenhorst Dam Farmstead will be discussed in more detail below, as requested.

### **Zwartkoppies Farmstead**

The Zwartkoppies farmstead is situated within the proposed 500 meter corridor proposed for the alignment of the transmission line, and approximately 300 meter from the closest planned alignment. This alignment is constrained by the existence of an existing 123kV transmission line between the Maanhaarberg ridges and the farmstead and the position of the Maanhaarberg substation planned 1 km west of the Zwartkoppies farm (**Figure 1**).

The farmstead is part of a working farm consisting of a main residential house, sheds, workshops and associated stock pens. The farmstead is shielded by tree lanes all around, excluding the stock pens and its associated workshop (**Figure 2**). The main residence has been transformed over time by numerous additions. The core of this building is older than 60 years. The out buildings, sheds and stocks pens have retained their original function and construction and are estimated to be older than 60 years.



Figure 1 - Layout of alignments and current infrastructure around Zwartkoppies farmstead



Figure 2 – Farmstead layout

**Figure 3** gives an indication of the view from the access road of Zwartkoppies towards the east from where the alignment will skirt to farmstead to the north. The existing transmission line is barely visible on the left of **Figure 3**. The proposed alignment must be realigned within the 500 meter corridor, closer to the existing transmission line and a final alignment will be decided on in consultation with the landowner and other stakeholders.



**Figure 3 – Panoramic view from the west towards the Zwartkoppies farmstead**

### **Badenhorst Dam Farmstead**

The HIA report submitted 15 January 2013 states the following:

*“The Second farmstead is Badenhorst dam farmstead situated on the outskirts of De Aar on the farm Badenhorst Dam farm (Portion 1 of Farm No. 180). There is however numerous Eskom Transmission lines, proposed solar parks, roads and rail lines running within a kilometre of this farmstead that has already impacted on the cultural landscape.”*



**Figure 4 – Panoramic view from the west towards the Badenhorst dam farmstead**

The closest the alignment can possibly come to the farmstead is 500 meters and the current proposed alignment is 1 kilometre from the farmstead, which indicates no direct impacts (**Figure 4** and **Figure 5**).



From a landscape perspective the proposed alignment 1 kilometre to the east of the farmstead blends with the current grouping of transmission and distribution lines and will not have a major impact on the farmstead.

The farmstead consists of a main dwelling and a secondary dwelling situated 50 meters to the east of the main dwelling. The farmstead is partly utilised as a Bed and Breakfast establishment. The farmstead is well shielded by tree lanes all around the property **Figure 6**. Although the main dwellings core is older than 60 years the building has been change overtime by additions.

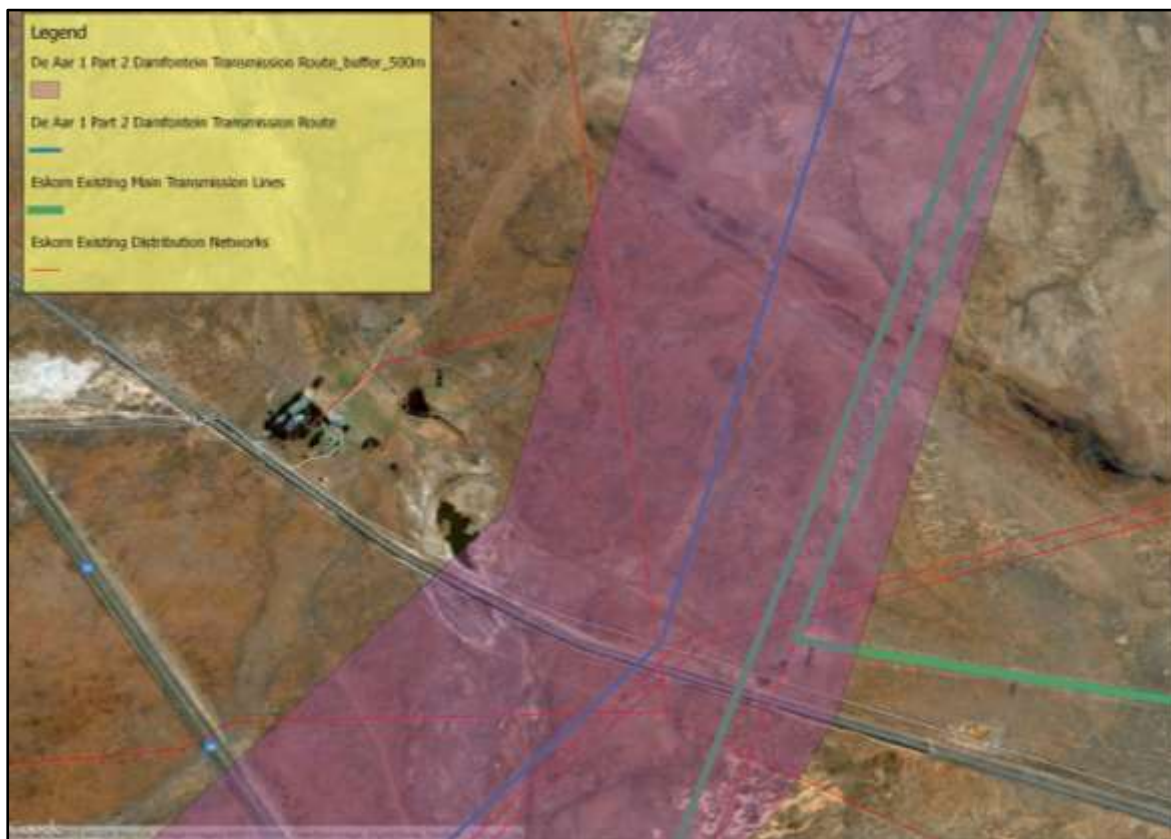


Figure 5 – Badenhorstdam farmstead with existing distribution and transmission lines



Figure 6 – Badenhorstdam farmstead layout (red line indicates electrical reticulation line to the farmstead)

Please contact me on 086 111 4771 or [wouter@gravesolutions.co.za](mailto:wouter@gravesolutions.co.za) if you require any further information.

Warm regards

A handwritten signature in black ink, appearing to read 'Wouter Fourie'.

Wouter Fourie

Director

PGS Heritage and Grave Relocation consultants