

**COMPILATION OF CONSTRUCTION ENVIRONMENTAL MANAGEMENT  
PROGRAMMES FOR THE STEELPOORT TO MARBELHALL 400KV POWER-  
LINE AND THE STEELPOORT INTEGRATION PROJECT:  
HERITAGE RESOURCES ASSESSMENT**

**COMPILATION OF CONSTRUCTION ENVIRONMENTAL MANAGEMENT PROGRAMMES FOR THE STEELPOORT TO MARBELHALL 400KV POWER-LINE AND THE STEELPOORT INTEGRATION PROJECT: HERITAGE RESOURCES ASSESSMENT**

**Report No:** 2012/JvS/060  
**Status:** Final  
**Revision No:** 0  
**Date:** December 2012

**Prepared for:**  
Iliso Consulting

**Representative:** Ms T Baker  
**Postal Address:** P O Box 68735, Highveld, 0169  
**Tel:** (012) 685 0900  
**E-mail:** Terry@iliso.com

**Prepared by:**  
J van Schalkwyk (D Litt et Phil), Heritage Consultant  
ASAPA Registration No.: 168  
**Principal Investigator:** Iron Age, Colonial Period, Industrial Heritage

**Postal Address:** 62 Coetzer Avenue, Monument Park, 0181  
**Mobile:** 076 790 6777  
**Fax:** 012 347 7270  
**E-mail:** jvschalkwyk@mweb.co.za

**Declaration:**

I, J.A. van Schalkwyk, declare that I do not have any financial or personal interest in the proposed development, nor its developers or any of their subsidiaries, apart from the provision of heritage assessment and management services.



J A van Schalkwyk (D Litt et Phil)  
Heritage Consultant  
December 2012

## EXECUTIVE SUMMARY

### **COMPILATION OF CONSTRUCTION ENVIRONMENTAL MANAGEMENT PROGRAMMES FOR THE STEELPOORT TO MARBELHALL 400KV POWER-LINE AND THE STEELPOORT INTEGRATION PROJECT: HERITAGE RESOURCES ASSESSMENT**

Eskom propose the development of the Steelpoort-Tubatse-Marblehall 400kV integration transmission line in order to strengthen the electricity supply in the region of Limpopo and Mpumalanga Provinces.

Previous impact assessments were done for sections of these routes (Schalkwyk 2007a, 2007b, 2009). In order for a final route to be selected, it was determined that a "walk down" of the route should be done to inspect the location of every tower structure that would be erected for the power line. Consequently an independent heritage consultant was appointed by **Iliso Consulting** to conduct this "walk down". In December 2012 a team of various specialists set out and over a period of five days the total route was surveyed.

The aim of this survey was to analyse and recommend heritage management mitigation measures and monitoring programmes for sites, features and objects within the corridor of the proposed power line. Information on the identified sites is presented in Section 3.

The following was found:

- A number of stone walled sites dating to the Late Iron Age were identified. On some the line just crosses over, whereas on others a tower structure will be erected (Section 3).
  - It is recommended that these sites are excavated by a suitably qualified archaeologist prior to the development taking place.
  - It is also recommended that an archaeologist is in attendance when construction takes place on the sites.
- One old farmstead was identified and is viewed to have a low significance on a regional level. However, in many cases graves are found in the vicinity of such old homesteads. However, due to the dense vegetation surrounding the buildings, it was difficult to determine if there are any graves located here.
  - It is recommended that these features are isolated by demarcating a 50m buffer zone around it, taking the outside of the buildings as starting point for determining the buffer.
- A number of informal cemeteries and burial places of differing size were identified. They are viewed to have a high significance on a local level (Section 3).
  - All cemeteries/burial places are located inside the corridor for the power line, or very close to it. These features should be left in place and isolated by demarcating a 10m buffer around them starting from the outermost graves that can be located.



J A van Schalkwyk  
Heritage Consultant  
December 2012

**TECHNICAL SUMMARY**

<b>Property details</b>	
Province	Mpumalanga & Limpopo Province
Magisterial district	Groblersdal, Nebo & Lydenburg
Topo-cadastral map	
Closest town	Groblersdal
Farm name & no.	Various
Portions/Holdings	Various

<b>Development criteria in terms of Section 38(1) of the NHR Act</b>	Yes/No
Construction of road, wall, power line, pipeline, canal or other linear form of development or barrier exceeding 300m in length	Yes
Construction of bridge or similar structure exceeding 50m in length	
Development exceeding 5000 sq m	
Development involving three or more existing erven or subdivisions	
Development involving three or more erven or divisions that have been consolidated within past five years	
Rezoning of site exceeding 10 000 sq m	
Any other development category, public open space, squares, parks, recreation grounds	

<b>Development</b>	
Description	Development of a 400kV electricity transmission line
Project name	Steelpoort – Marblehall (Tubatse Silimela) line

<b>Land use</b>	
Previous land use	Agriculture/Urban
Current land use	Agriculture/Urban

**TABLE OF CONTENTS**

	Page
EXECUTIVE SUMMARY .....	II
TECHNICAL SUMMARY .....	III
TABLE OF CONTENTS .....	IV
LIST OF FIGURES.....	IV
GLOSSARY OF TERMS AND ABBREVIATIONS.....	V
1. INTRODUCTION.....	1
2. HERITAGE RESOURCES.....	1
3. DESCRIPTION OF THE AFFECTED ENVIRONMENT .....	2
4. RECOMMENDED MANAGEMENT MEASURES.....	17
5. MITIGATION MEASURES.....	18
6. REFERENCES.....	19
APPENDIX 1: CONVENTIONS USED TO ASSESS THE IMPACT OF PROJECTS ON HERITAGE RESOURCES.....	20
APPENDIX 2. RELEVANT LEGISLATION .....	21

**LIST OF FIGURES**

	Page
Fig. 1. Location of the study area in regional context. ....	3

**GLOSSARY OF TERMS AND ABBREVIATIONS**

**STONE AGE**

Early Stone Age	2 000 000 - 150 000 Before Present (BP)
Middle Stone Age	150 000 - 30 000 BP
Late Stone Age	30 000 - until c. AD 200

**IRON AGE**

Early Iron Age	AD 200 - AD 900
Middle Iron Age	AD 900 - AD 1300
Late Iron Age	AD 1300 - AD 1830

**HISTORIC PERIOD**

Since the arrival of the white settlers - c. AD 1840 in this part of the country

ASAPA	Association of Southern African Professional Archaeologists
C S-G	Chief Surveyor-General
EIA	Early Iron Age
ESA	Early Stone Age
LIA	Late Iron Age
LSA	Late Stone Age
MSA	Middle Stone Age
NHRA	National Heritage Resources Act
PHRA	Provincial Heritage Resources Agency
SAHRA	South African Heritage Resources Agency

# COMPILATION OF CONSTRUCTION ENVIRONMENTAL MANAGEMENT PROGRAMMES FOR THE STEELPOORT TO MARBELHALL 400KV POWER-LINE AND THE STEELPOORT INTEGRATION PROJECT: HERITAGE RESOURCES ASSESSMENT

## 1. INTRODUCTION

Eskom propose the development of the Steelpoort-Tubatse-Marblehall 400kV integration transmission line in order to strengthen the electricity supply in the region of Limpopo and Mpumalanga Provinces.

Previous impact assessments were done for sections of these routes (Schalkwyk 2007a, 2007b, 2009). In order for a final route to be selected, it was determined that a “walk down” of the route should be done to inspect the location of every tower structure that would be erected for the power line. Consequently an independent heritage consultant was appointed by **Iliso Consulting** to conduct this “walk down”. In December 2012 a team of various specialists set out and over a period of five days the total route was surveyed.

The aim of this survey was to analyse and recommend heritage management mitigation measures and monitoring programmes for sites, features and objects within the corridor of the proposed power line. Information on the identified sites is presented in Section 3.

## 2. HERITAGE RESOURCES

### 2.1 The National Estate

The NHRA (No. 25 of 1999) defines the heritage resources of South Africa which are of cultural significance or other special value for the present community and for future generations that must be considered part of the national estate to include:

- places, buildings, structures and equipment of cultural significance;
- places to which oral traditions are attached or which are associated with living heritage;
- historical settlements and townscapes;
- landscapes and natural features of cultural significance;
- geological sites of scientific or cultural importance;
- archaeological and palaeontological sites;
- graves and burial grounds, including-
  - ancestral graves;
  - royal graves and graves of traditional leaders;
  - graves of victims of conflict;
  - graves of individuals designated by the Minister by notice in the Gazette;
  - historical graves and cemeteries; and
  - other human remains which are not covered in terms of the Human Tissue Act, 1983 (Act No. 65 of 1983);
- sites of significance relating to the history of slavery in South Africa;
- movable objects, including-
  - objects recovered from the soil or waters of South Africa, including archaeological and palaeontological objects and material, meteorites and rare geological specimens;

- objects to which oral traditions are attached or which are associated with living heritage;
- ethnographic art and objects;
- military objects;
- objects of decorative or fine art;
- objects of scientific or technological interest; and
- books, records, documents, photographic positives and negatives, graphic, film or video material or sound recordings, excluding those that are public records as defined in section 1(xiv) of the National Archives of South Africa Act, 1996 (Act No. 43 of 1996).

## 2.2 Cultural significance

In the NHRA, Section 2 (vi), it is stated that “cultural significance” means aesthetic, architectural, historical, scientific, social, spiritual, linguistic or technological value or significance. This is determined in relation to a site or feature’s uniqueness, condition of preservation and research potential.

According to Section 3(3) of the NHRA, a place or object is to be considered part of the national estate if it has cultural significance or other special value because of

- its importance in the community, or pattern of South Africa's history;
- its possession of uncommon, rare or endangered aspects of South Africa's natural or cultural heritage;
- its potential to yield information that will contribute to an understanding of South Africa's natural or cultural heritage;
- its importance in demonstrating the principal characteristics of a particular class of South Africa's natural or cultural places or objects;
- its importance in exhibiting particular aesthetic characteristics valued by a community or cultural group;
- its importance in demonstrating a high degree of creative or technical achievement at a particular period;
- its strong or special association with a particular community or cultural group for social, cultural or spiritual reasons;
- its strong or special association with the life or work of a person, group or organisation of importance in the history of South Africa; and
- sites of significance relating to the history of slavery in South Africa.

## 3. DESCRIPTION OF THE AFFECTED ENVIRONMENT

### 3.1 Site location and description

The study area involves two sections of power line corridors, most of which follows existing corridors. The longest line runs eastwards from south of Marblehall, across the Nebo plateau, across the Lulu Mountains and down into the Steelpoort River valley, where it is proposed to develop a substation. The second line runs from this substation in a north-westerly direction to the farm Syferfontein 136JS, where a new substation will be constructed.

As can be expected with a study area ranging across such a large area, the environment changes drastically from west to east. The west forms part of a highveld area typified by an undulating landscape. Going down the escarpment to the middle veld, the area is typified by mountains. In contrast, the eastern section is marked by mountains and hills, creating a broken type of environment.



Most of the region has been subjected to agricultural activities, with ploughing in the highveld and central regions changing the environment drastically. One example is the Loskop Dam Irrigation Scheme, in which irrigation, based on 480km of canals, is practiced.

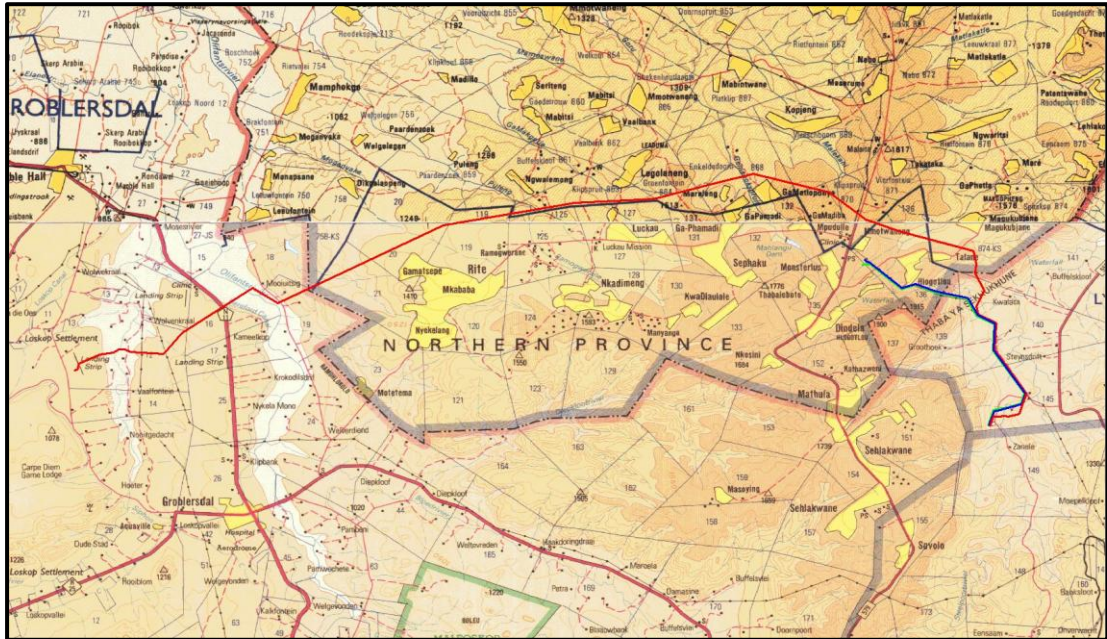
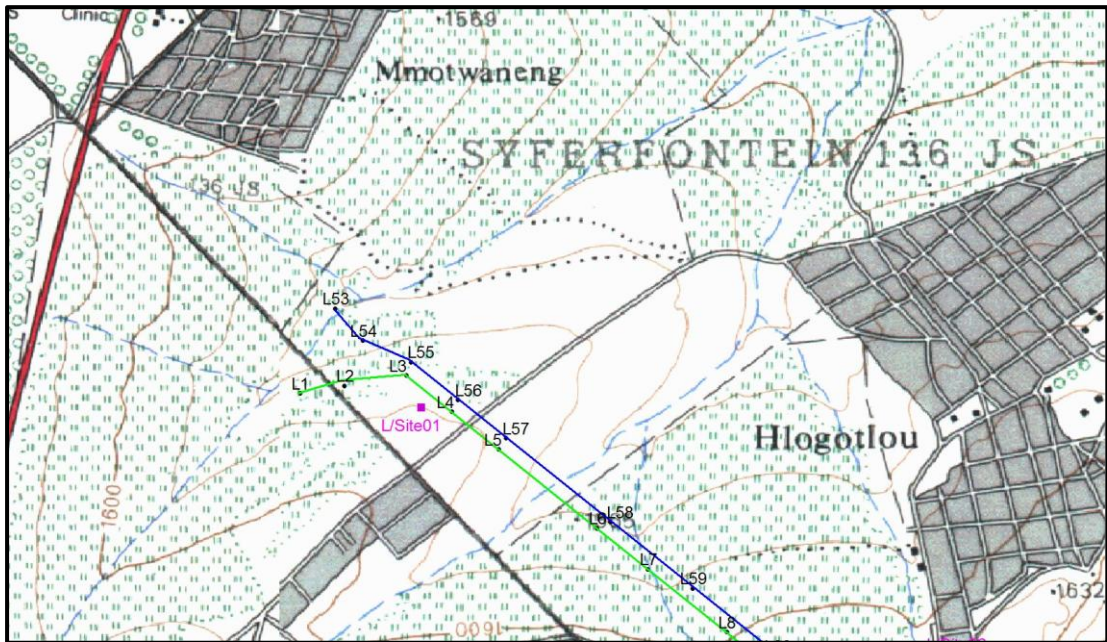


Fig. 1. Location of the study area in regional context.  
(Map 2428, 2528: Chief Surveyor-General)

For ease of presentation, the different lines are presented in a number of maps below

**Map 1**

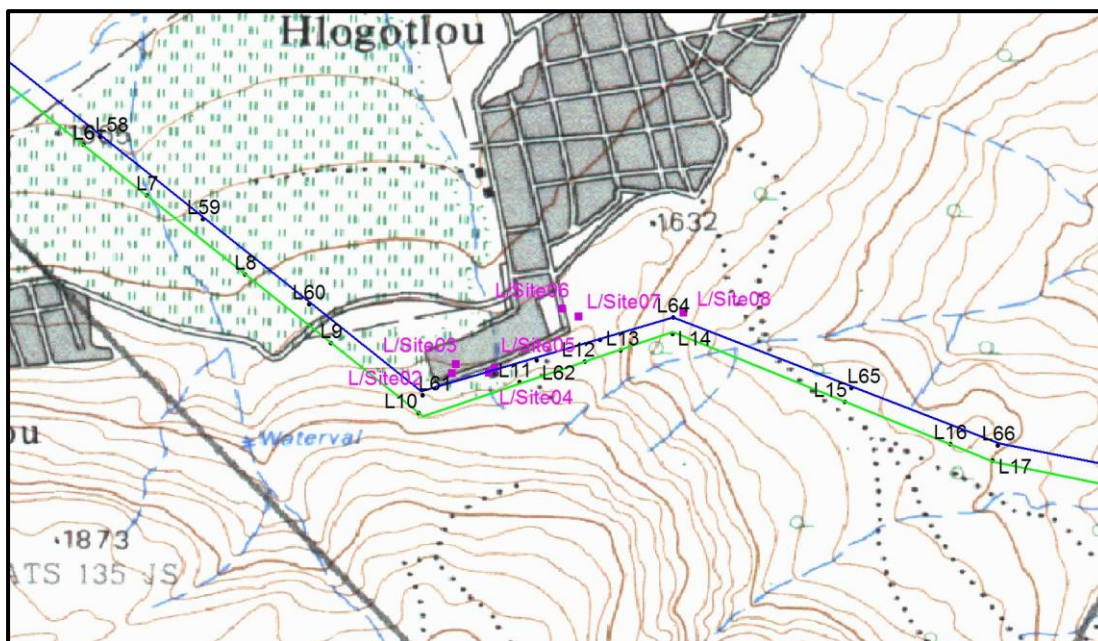


- Graves & Cemeteries

<b>Location</b>	No. L/Site01	S 25.02626	E 29.75533
<b>Description</b>			
A formal community cemetery with probably more than 200 graves. Most have gravestones, but some are only marked with stone cairns.			
<b>Significance</b>	High on a local level – Grade III		
<b>Mitigation</b>			
As this is a large and well fenced cemetery, it is unlikely that the power line development would have an impact on it.			
<b>Recommendation:</b>			
Although the current alignment by-pass the cemetery, it is recommended that the site is fenced off with danger tape for the duration of the construction period.			





**Map 2**

- Graves & Cemeteries

<b>Location</b>	No. L/Site02	S 25.03825	E 29.77394
	No. L/Site03	S 25.03796	E 29.77405
	No. L/Site04	S 25.03796	E 29.77511
	No. L/Site05	S 25.03808	E 29.77529
	No. L/Site06	S 25.03622	E 29.77741
	No. L/Site07	S 25.03647	E 29.77793
<b>Description</b>	<p>L/Site02: Three small graves, probably of three children. Very old, but still fenced off.</p> <p>L/Site03: A number of well-marked graves inside the yard of a house.</p> <p>L/Site04: A single marked grave next to some sisal plants.</p> <p>L/Site05: A single marked grave under a tree.</p> <p>L/Site06: A single marked grave adjacent to a house.</p> <p>L/Site07: A large community cemetery, developed in two different sections.</p>		
<b>Significance</b>	High on a local level – Grade III		
<b>Mitigation</b>	<p>L/Site02: This site is probably inside the power line reserve.</p> <p><b>Recommendation:</b> It should be fenced off with danger tape, leaving a buffer of at least 10 metres around it.</p> <p>L/Site03: As this site is inside the boundary of a homestead, the chances of it being impacted on by the power line is very unlikely.</p> <p>L/Site04: This site is inside the power line reserve.</p> <p><b>Recommendation:</b> It should be fenced off with danger tape, leaving a buffer of at least 10 metres around it.</p> <p>L/Site05: This site is inside the power line reserve.</p> <p><b>Recommendation:</b> It should be fenced off with danger tape, leaving a buffer of at least 10 metres around it.</p>		

L/Site06: This site is probably outside the power line reserve, but close to a possible access route.

**Recommendation:**

It should be fenced off with danger tape, leaving a buffer of at least 10 metres around it.

L/Site07: As this is a large and well fenced cemetery, it is unlikely that the power line development would have an impact on it.

**Recommendation:**

Although the current alignment by-pass the cemetery, it is recommended that the site is fenced off with danger tape for the duration of the construction period.



L/Site02



L/Site03



L/Site04



L/Site05



L/Site05



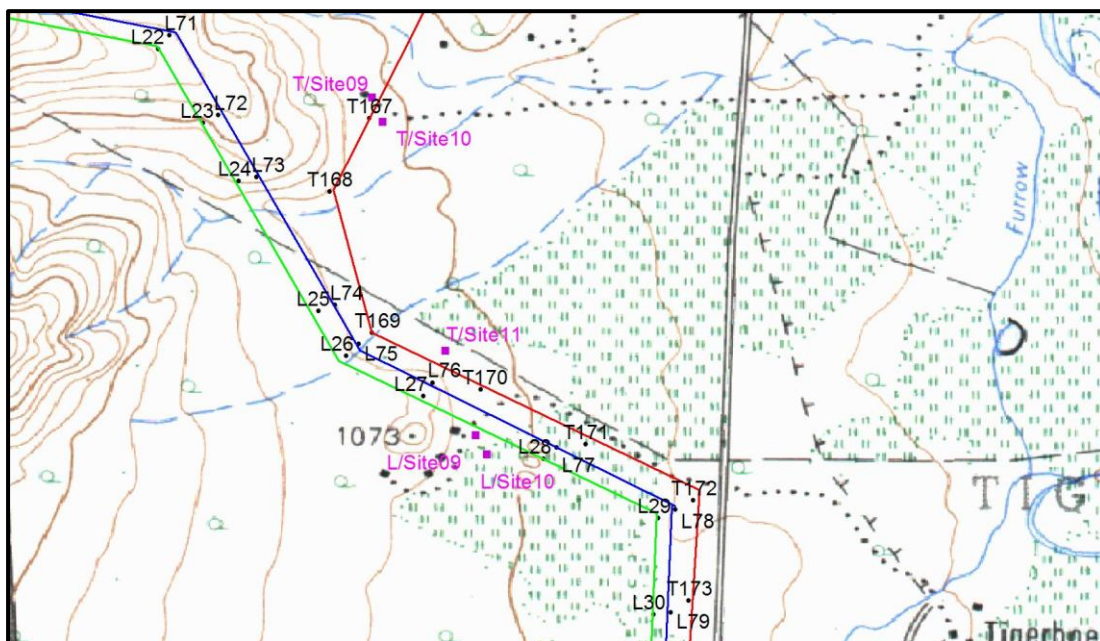
L/Site06

- Archaeological sites

<b>Location</b>	No. L/Site08	S 25.03647	E 29.78124
<b>Description</b>			
A heap of stones commonly referred to as an <i>isivivane</i> . It probably date to the Late Iron Age or early historic period and was a way in which boundaries were identified, especially where people crossed of a mountain range.			
<b>Significance</b>	High on a local level – Grade III		
<b>Mitigation</b>			
This site is very close to tower L64 as well as probably located inside the power line reserve.			
<b>Recommendation:</b>			
It should be fenced off with danger tape, leaving a buffer of at least 10 metres around it.			

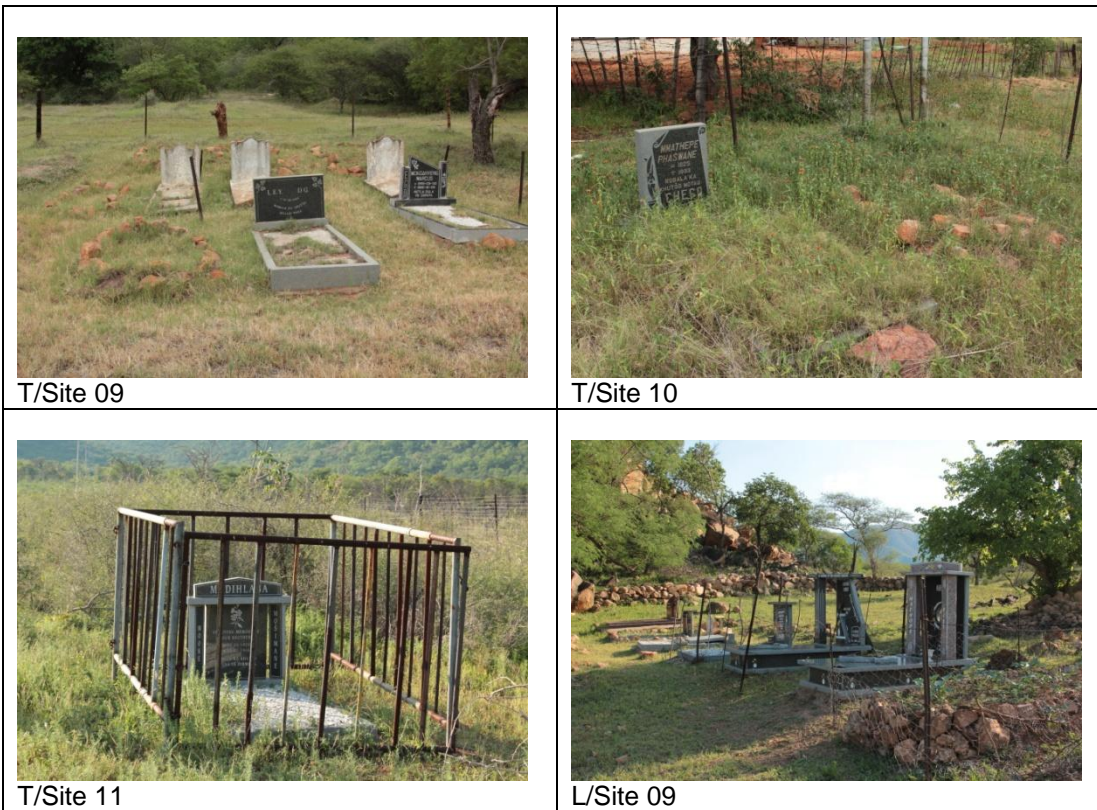




**Map 3**

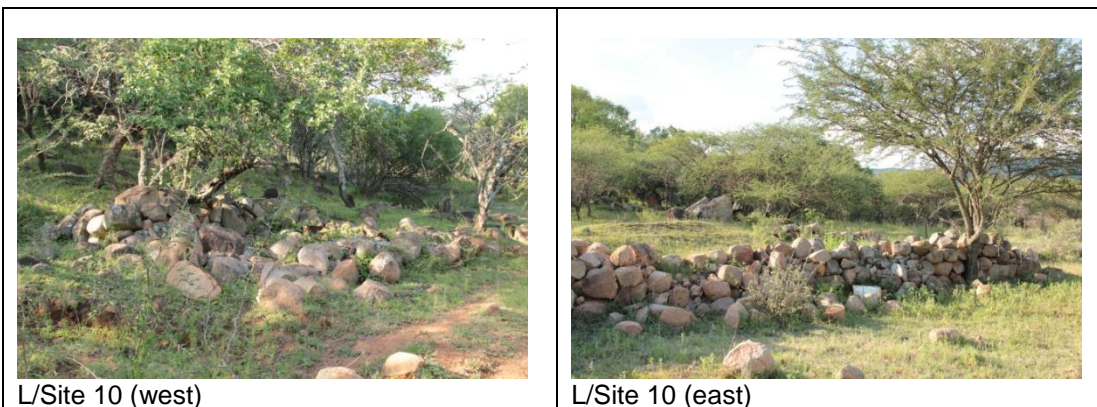
- Graves & Cemeteries

<b>Location</b>	No. T/Site09	S 25.04634	E 29.81697
	No. T/Site10	S 25.04711	E 29.81732
	No. T/Site11	S 25.05435	E 29.81929
	No. L/Site09	S 25.05702	E 29.82026
<b>Description</b>			
T/Site09: A number of well-marked graves, fenced off with wire.			
T/Site10: A single marked grave next to a homestead.			
T/Site11: A single marked grave fenced off with a metal fence			
L/Site09: A small cemetery with graves dating to the recent past.			
<b>Significance</b>	High on a local level – Grade III		
<b>Mitigation</b>			
T/Site09: This site is probably inside the power line reserve.			
<b>Recommendation:</b>			
It should be fenced off with danger tape, leaving a buffer of at least 10 metres around it.			
T/Site10: This site is probably inside the power line reserve.			
<b>Recommendation:</b>			
It should be fenced off with danger tape, leaving a buffer of at least 10 metres around it.			
T/Site11: This site is probably inside the power line reserve.			
<b>Recommendation:</b>			
It should be fenced off with danger tape, leaving a buffer of at least 10 metres around it.			
L/Site09: This site is probably inside the power line reserve.			
<b>Recommendation:</b>			
It should be fenced off with danger tape, leaving a buffer of at least 10 metres around it.			



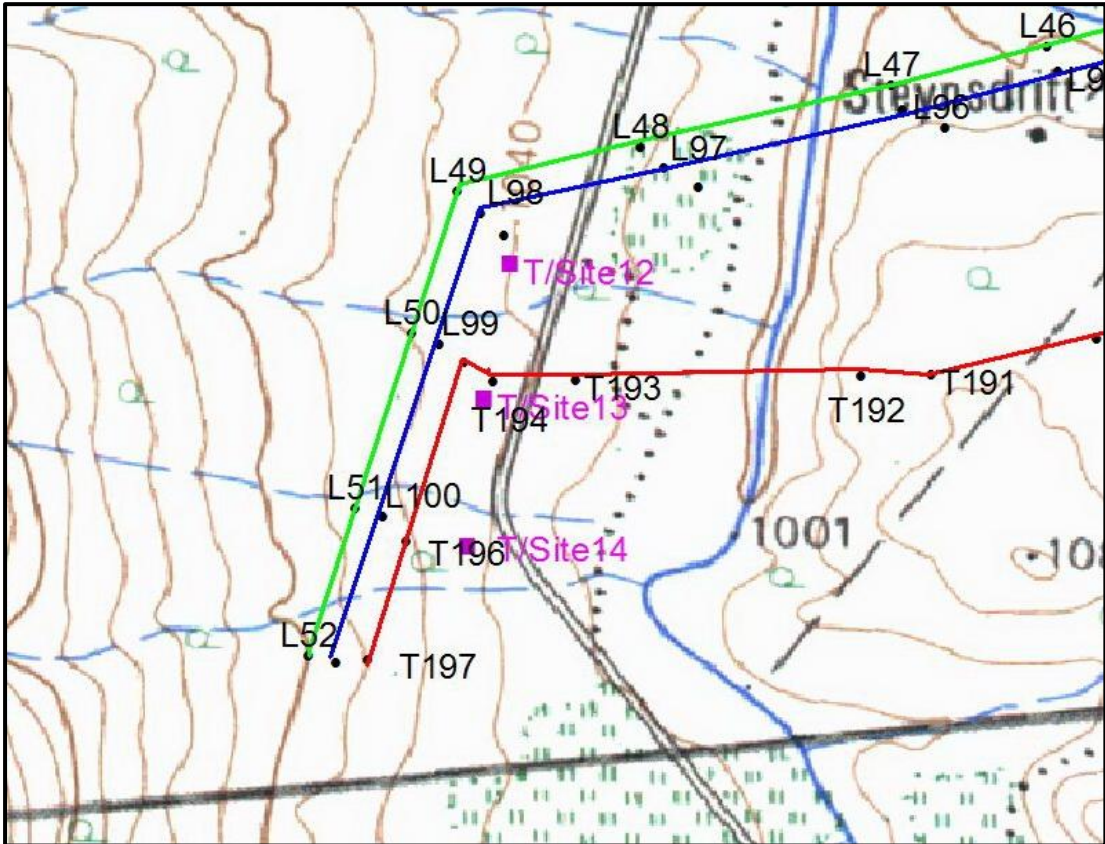
- Archaeological sites

<b>Location</b>	No. L/Site10	S 25.05762	E 29.82061
<b>Description</b>			
Stone walling occur all along the foot of the two hills. It probably dates to the recent past and formed part of homesteads, cattle enclosures and agricultural fields.			
<b>Significance</b>	High on a regional level – Grade III		
<b>Mitigation</b>			
These features are close to the power line reserve. Due to the dense vegetation currently on the site, it is difficult to determine the exact layout and position of the walls.			
<b>Recommendation:</b>			
It should be fenced off with danger tape, leaving a buffer of at least 10 metres around it.			





**Map 4**



- Archaeological sites

<b>Location</b>	No. T/Site12-14	S 25.11248	E 29.82557
<b>Description</b>			
T/Site 13 & 14 indicate an area where a large settlement site occurs. It dates to the Late Iron Age and consists of homestead area, public areas such as a male gathering place and stock pens. It measures approximately 500 X 400 metres (north/south by east/west), with a small section on the western side of the road.			
The section identified as T/Site 12 represents the agricultural terracing and fields of the former, although some homestead areas can also be identified. It is approximately the same size as the previous section			
<b>Significance</b>	High on a regional level – Grade III		
<b>Mitigation</b>			
Both of these sites will be traversed by the power lines. In addition, it is planned to construct the substation on the settlement site.			
<b>Recommendation:</b>			
If the substation location cannot be move away from the archaeological site, the site should be excavated in full by an archaeologist. This would involve the documentation (mapping and photographing) of all features, as well as the archaeological excavation of sufficient features to fulfil requirements as laid down by SAHRA.			
<b>Requirements</b>			
A permit should be obtained from SAHRA for the possible impact on the site prior to the development taking place.			

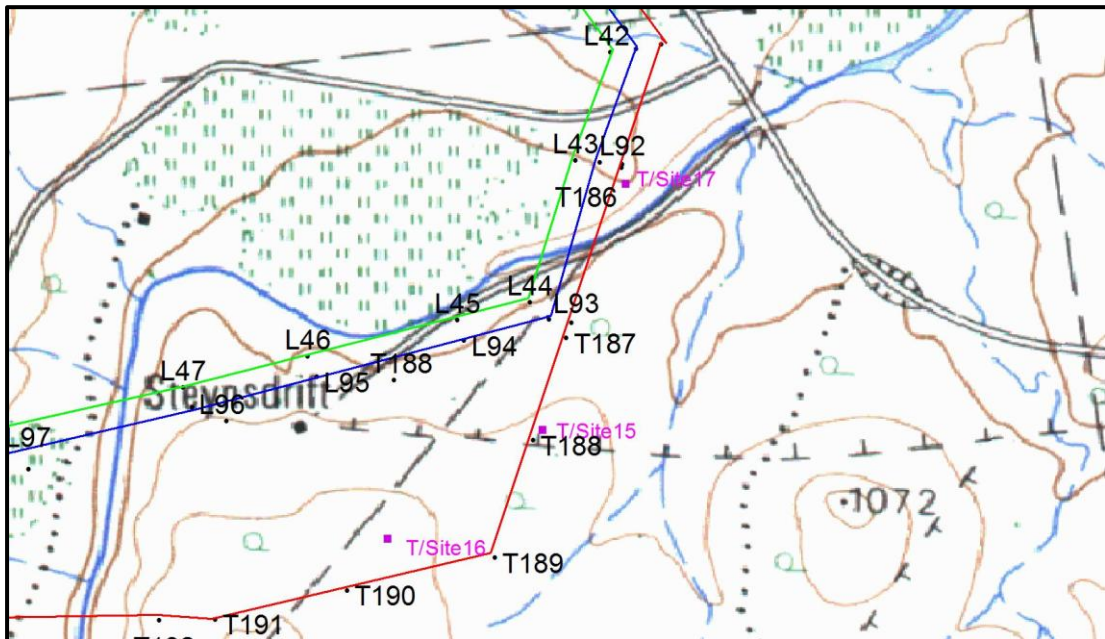




T/Site 13-14



T/Site 12

**Map 5**

- Archaeological sites

Location	No. T/Site 15 No. T/Site 16 No. T/Site 17	S 25.10819 S 25.11071 S 25.10253	E 29.84185 E 29.83828 E 29.84378
<b>Description</b>	<p>T/Site 15: Stone walling which probably formed part of a homestead with a cattle kraal. It is estimate to be approximately 80 x 50 metres in size</p> <p>T/Site 16: Ephemeral stone walling with no distinctive layout. Due to the difficulty in determining the stone walling, its size could not be determined.</p> <p>T/Site 17: Strategic located stone walled site on ridge overlooking Steelpoort River, consisting of a large cattle kraal and smaller stone circles on the periphery. It is estimate to be 150 by 80 metres in size</p>		
<b>Significance</b>	High on a regional level – Grade III		
<b>Mitigation</b>	<p>T/Site 15: This site is close to Tower 188 and also below the power line.</p> <p><b>Recommendation:</b> If the tower cannot be moved, an archaeologist should be present when work is taking place in the vicinity. During the site visit the vegetation was very high and dense, making it difficult to determine the boundaries of the site. It is recommended that prior to construction taking place that the area surrounding the site is cleared by hand in order to determine the full extent of the site.</p> <p>T/Site 16: As this site is located some distance from the power line, it is unlikely that it would be impacted on by the development of the power line.</p> <p>T/Site 17: Tower numbers T186 and L92 are located on this site as well as being located below the line.</p> <p><b>Recommendation:</b> If the towers cannot be moved, an archaeologist should be present when work is taking place in the vicinity. During the site visit the vegetation was very high and dense, making it difficult to determine the boundaries of the site. It is recommended that prior to</p>		

construction taking place that the area surrounding the site is cleared by hand in order to determine the full extent of the site.

**Requirements**

A permit should be obtained from SAHRA for the possible impact on the site prior to the development taking place.



T/Site 15

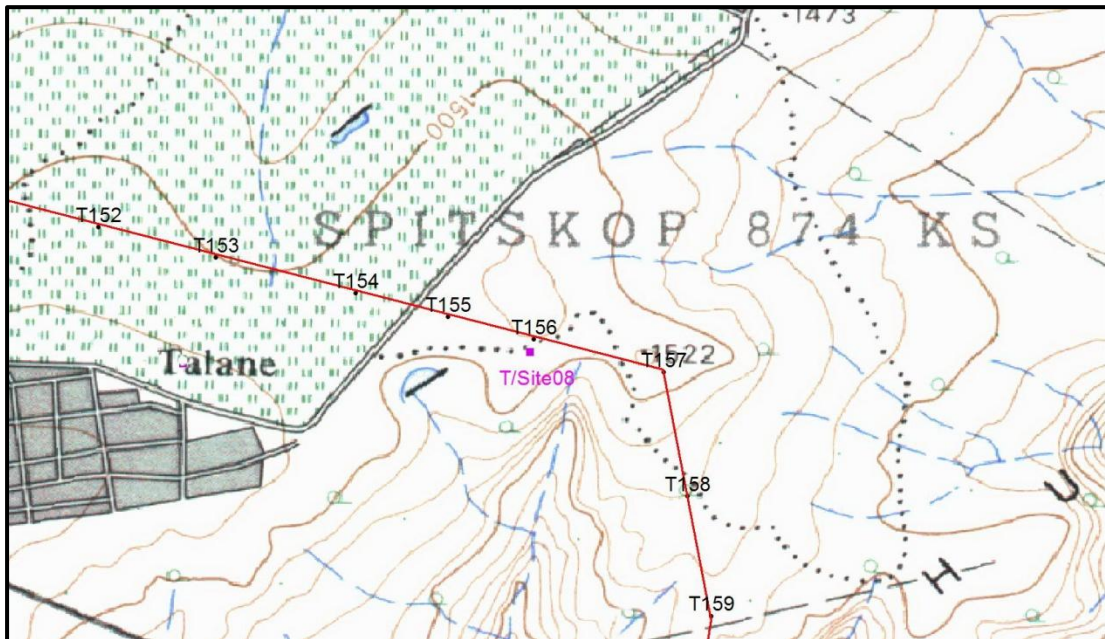


T/Site 16



T/Site 17

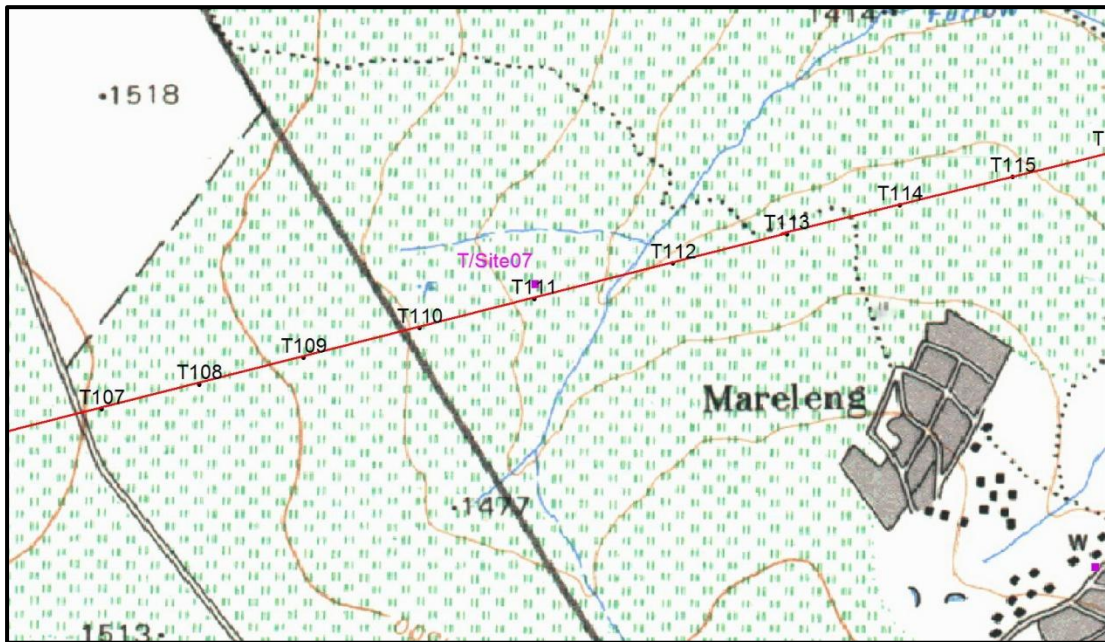


**Map 6**

- Graves & Cemeteries

<b>Location</b>	No. T/Site08	S 25.01692	E 29.81023
<b>Description</b>			
A formal community cemetery with probably more than 100 graves. Most have gravestones, but some are only marked with stone cairns.			
<b>Significance</b>	High on a local level – Grade III		
<b>Mitigation</b>			
As this is a large and well fenced cemetery, it is unlikely that the power line development would have an impact on it.			
<b>Recommendation:</b>			
Although the current alignment by-pass the cemetery, it is recommended that the site is fenced off with danger tape for the duration of the construction period.			



**Map 7**

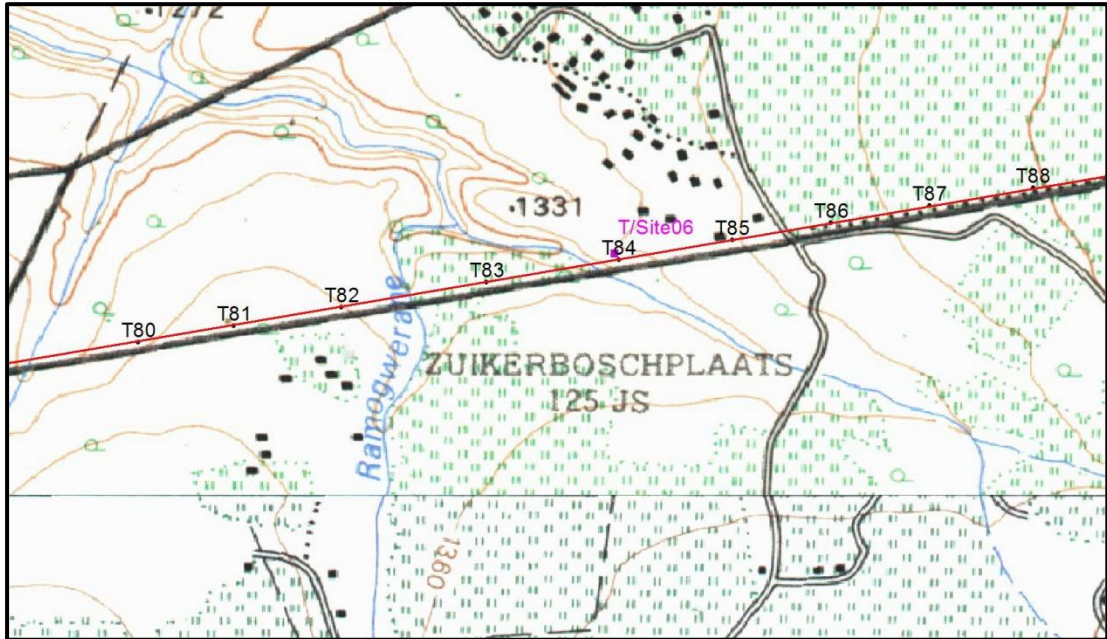
- Graves & Cemeteries

<b>Location</b>	No. T/Site07	S 24.98028	E 29.65839
<b>Description</b>			
An informal burial place with an unknown number of graves marked only with stone cairns, located under a large tree.			
<b>Significance</b>	High on a local level – Grade III		
<b>Mitigation</b>			
This site is located close to the power line reserve as well as tower T111.			
<b>Recommendation:</b>			
Although the current alignment by-pass the burial place, it is recommended that the site is fenced off with danger tape for the duration of the construction period.			





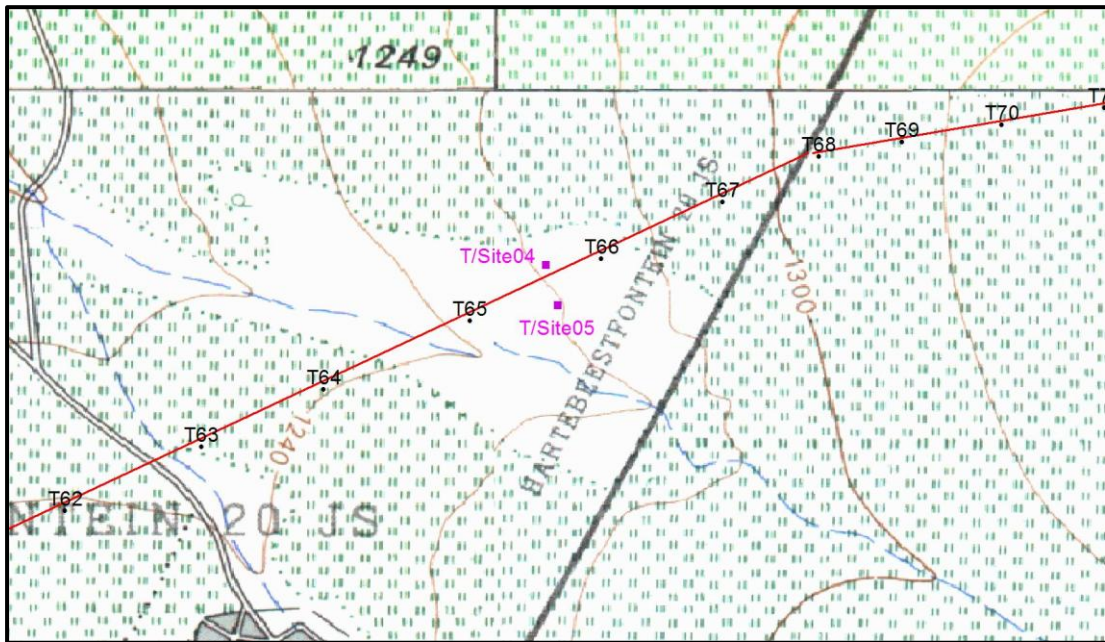
**Map 8**



- Archaeological sites

<b>Location</b>	No. T/Site06	S 24.99308	E 29.56529
<b>Description</b>			
A stone walled site that are used for the initiation of young boys. The various elements such as the central fire place, accommodation structures, etc. are clearly identifiable and also indicates that the site has been used in the recent past.			
<b>Significance</b>	High on a regional level – Grade III		
<b>Mitigation</b>			
Tower T 84 will be located on this site and the power line will cross it as well.			
<b>Recommendation:</b>			
It is recommended that the tower is moved to a location off the site. In addition it is recommended that the local community is briefed about the line crossing the site and that their consent is gained for the line to pass over it.			



**Map 9**

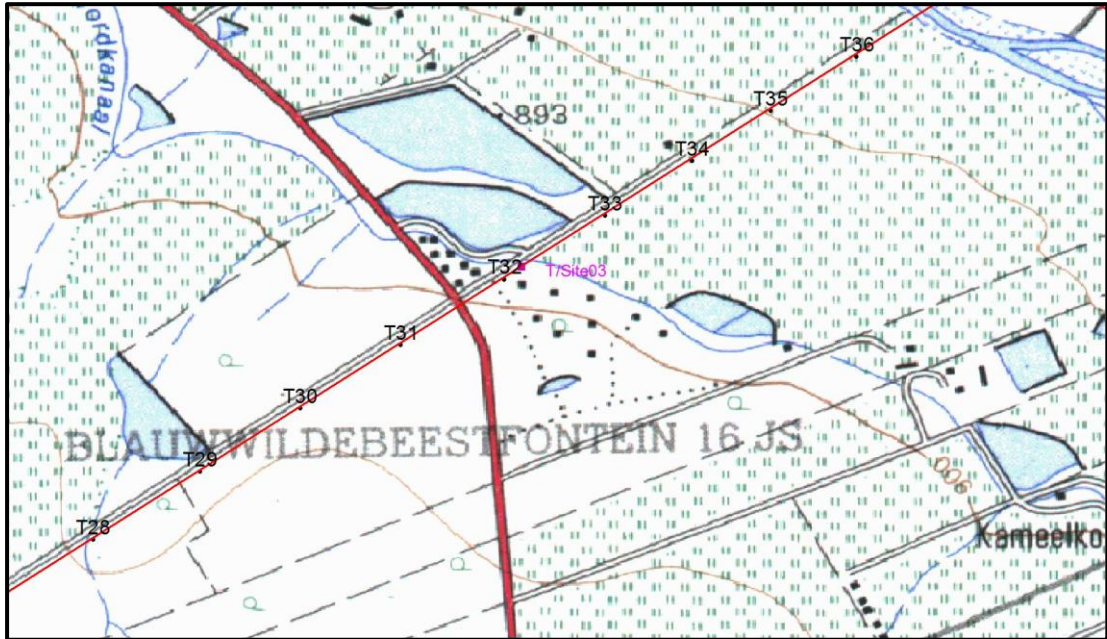
- Graves & Cemeteries

<b>Location</b>	No. T/Site04 No. T/Site05	S 25.00625 S 25.00754	E 29.50139 E 29.50175
<b>Description</b>			
T/Site04: An informal burial place with three graves, two of which are marked with headstones.			
T/Site05: A single grave with a headstone, but with no inscription.			
<b>Significance</b>	High on a local level – Grade III		
<b>Mitigation</b>			
These two sites are located close to the power line reserve.			
<b>Recommendation:</b>			
Although the current alignment by-pass both, it is recommended that the sites are fenced off with danger tape for the duration of the construction period.			





**Map 10**



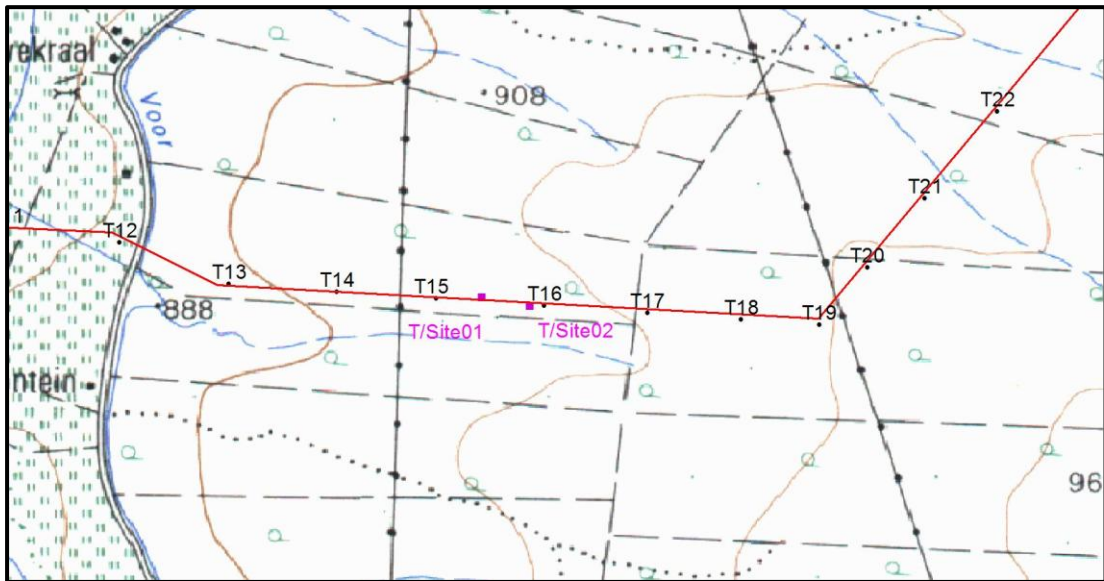
- Archaeological sites

<b>Location</b>	No. T/Site03	S 25.04876	E 29.38458
<b>Description</b>			
The remains of a typical farm labourer homestead built with clay bricks. Due to the dense vegetation it is difficult to determine its size and layout			
<b>Significance</b>	High on a regional level – Grade III		
<b>Mitigation</b>			
This site is inside the power line reserve. Tower T 32 will be located close to this site and the power line will cross it as well.			
<b>Recommendation:</b>			
The site should be fenced off with danger tape, leaving a buffer of at least 50 metres, from the outermost visible remains of the structure, around it.			
During the site visit the vegetation was very high and dense, making it difficult to determine the boundaries of the site. It is recommended that prior to construction taking place that the area surrounding the site is cleared by hand in order to determine the full extent of the site.			





**Map 11**



- Graves & Cemeteries

<b>Location</b>	No. T/Site01 No. T/Site02	S 25.07610 S 25.07637	E 29.33858 E 29.34009
<b>Description</b>			
T/Site01: An informal burial place with an unknown number of graves, only a few of which are marked with headstones. T/Site02: A single grave with a headstone.			
<b>Significance</b>	High on a local level – Grade III		
<b>Mitigation</b>			
Both sites are located between towers T15 and T16 and are located inside the power line reserve.			
<b>Recommendation:</b>			
Although the current alignment by-pass both, it is recommended that the sites are fenced off with danger tape for the duration of the construction period.			
During the site visit the vegetation was very high and dense, making it difficult to determine the boundaries of the sites. It is recommended that prior to construction taking place that these areas are cleared by hand in order to determine the full extent of the burial sites.			



#### 4. RECOMMENDED MANAGEMENT MEASURES

Heritage sites are fixed features in the environment, occurring within specific spatial confines. Any impact upon them is permanent and non-reversible. Those resources that cannot be avoided and that are directly impacted by the development can be excavated/recorded and a management plan can be developed for future action. Those sites that are not impacted on can be written into the management plan, whence they can be avoided or cared for in the future.

##### 4.1 Objectives

- Protection of archaeological, historical and any other site or land considered being of cultural value within the project boundary against vandalism, destruction and theft.
- The preservation and appropriate management of new discoveries in accordance with the National Heritage Resources Act (Act No. 25 of 1999), should these be discovered during construction.

##### 5.1.2 Construction phase

General management objectives and commitments:

- To avoid disturbing sites of heritage importance; and
- To avoid disturbing burial sites.

The following shall apply:

- Known sites should be clearly demarcated in order that they can be avoided during construction activities.
- The contractors and workers should be notified that archaeological sites might be exposed during the construction work.
- Should any heritage artefacts be exposed during excavation, work on the area where the artefacts were discovered, shall cease immediately and the Environmental Control Officer shall be notified as soon as possible;
- All discoveries shall be reported immediately to a heritage practitioner so that an investigation and evaluation of the finds can be made. Acting upon advice from these specialists, the Environmental Control Officer will advise the necessary actions to be taken;
- Under no circumstances shall any artefacts be removed, destroyed or interfered with by anyone on the site; and
- Contractors and workers shall be advised of the penalties associated with the unlawful removal of cultural, historical, archaeological or palaeontological artefacts, as set out in the National Heritage Resources Act (Act No. 25 of 1999), Section 51. (1).

##### 4.1.2 Operation phase

General management objectives and commitments:

- To avoid disturbing sites of heritage importance.

The following shall apply:

- Continued care should be taken to observe discovery of any sites of heritage significance during operation. Should any archaeological artifacts and palaeontological remains be exposed during operations, work on the area where the

artefacts were found, shall cease immediately and the appropriate person shall be notified as soon as possible;

- Upon receipt of such notification, an Archaeologist or Palaeontologist shall investigate the site as soon as practicable. Acting upon advice from these specialists, the necessary actions shall be taken;
- Under no circumstances shall archaeological or palaeontological artefacts be removed, destroyed or interfered with by anyone on the site during operations; and
- The operator shall advise its workers of the penalties associated with the unlawful removal of cultural, historical, archaeological or palaeontological artefacts, as set out in the National Heritage Resources Act (Act No. 25 of 1999), Section 51(1).

## 5. MITIGATION MEASURES

The aim of this survey was to analyse and recommend heritage management mitigation measures and monitoring programmes for sites, features and objects within the corridor of the proposed power line. Information on the identified sites is presented in Section 3. The significance of each feature was determined by application of the matrix presented in Appendix 1. This allows that similar features can be rated in similar manner. The following was found:

- A number of stone walled sites dating to the Late Iron Age were identified. On some the line just crosses over, whereas on others a tower structure will be erected (Section 3).
  - It is recommended that these sites are excavated by a suitably qualified archaeologist prior to the development taking place.
  - It is also recommended that an archaeologist is in attendance when construction takes place on the sites.
- One old farmstead was identified and is viewed to have a low significance on a regional level. However, in many cases graves are found in the vicinity of such old homesteads. However, due to the dense vegetation surrounding the buildings, it was difficult to determine if there are any graves located here.
  - It is recommended that these features are isolated by demarcating a 50m buffer zone around it, taking the outside of the buildings as starting point for determining the buffer.
- A number of informal cemeteries and burial places of differing size were identified. They are viewed to have a high significance on a local level (Section 3).
  - All cemeteries/burial places are located inside the corridor for the power line, or very close to it. These features should be left in place and isolated by demarcating a 10m buffer around them starting from the outermost graves that can be located.

## 6. REFERENCES

### Data bases

Chief Surveyor General  
Environmental Potential Atlas, Department of Environmental Affairs and Tourism.  
Heritage Atlas Database, Pretoria.  
National Archives of South Africa

### Literature

Acocks, J.P.H. 1975. *Veld Types of South Africa*. Memoirs of the Botanical Survey of South Africa, No. 40. Pretoria: Botanical Research Institute.

Botha, S.J. (ed.) 1983. *A Proposed National Development Plan for Lebowa*. Pretoria: University of Pretoria.

Holm, S.E. 1966. *Bibliography of South African Pre- and Protohistoric archaeology*. Pretoria: J.L. van Schaik.

Mason, R.J. 1962. *Prehistory of the Transvaal*. Johannesburg: Witwatersrand University Press.

Richardson, D. 2001. *Historic sites of South Africa*. Cape Town: Struik Publishers.

Transvaal Native Affairs Department, 1905. *Short history of the native tribes of the Transvaal*. Pretoria: Government Printer.

Van Schalkwyk, J.A. 2007a. *Heritage impact assessment for the planned Steelpoort Pumped Storage Station, Lydenburg municipal district, Mpumalanga Province*. Unpublished report 2007kh002. Pretoria: National Cultural History Museum.

Van Schalkwyk, J.A. 2007b *Heritage impact assessment for the planned Steelpoort Integration project, Limpopo Province*. Unpublished report 2007/JvS/109. Pretoria: National Cultural History Museum.

Van Schalkwyk, J.A. 2009. *Heritage impact scoping report for the proposed Eskom Highveld North, West Lowveld strengthening project, Mpumalanga and Limpopo Provinces*. Unpublished report 2009/JvS/019. Pretoria.

### Maps

1: 50 000 Topocadastral maps

## APPENDIX 1: CONVENTIONS USED TO ASSESS THE IMPACT OF PROJECTS ON HERITAGE RESOURCES

### Significance

According to the NHRA, Section 2(vi) the **significance** of a heritage sites and artefacts is determined by it aesthetic, architectural, historical, scientific, social, spiritual, linguistic or technical value in relation to the uniqueness, condition of preservation and research potential. It must be kept in mind that the various aspects are not mutually exclusive, and that the evaluation of any site is done with reference to any number of these.

Matrix used for assessing the significance of each identified site/feature

<b>1. Historic value</b>				
Is it important in the community, or pattern of history				
Does it have strong or special association with the life or work of a person, group or organisation of importance in history				
Does it have significance relating to the history of slavery				
<b>2. Aesthetic value</b>				
It is important in exhibiting particular aesthetic characteristics valued by a community or cultural group				
<b>3. Scientific value</b>				
Does it have potential to yield information that will contribute to an understanding of natural or cultural heritage				
Is it important in demonstrating a high degree of creative or technical achievement at a particular period				
<b>4. Social value</b>				
Does it have strong or special association with a particular community or cultural group for social, cultural or spiritual reasons				
<b>5. Rarity</b>				
Does it possess uncommon, rare or endangered aspects of natural or cultural heritage				
<b>6. Representivity</b>				
Is it important in demonstrating the principal characteristics of a particular class of natural or cultural places or objects				
Importance in demonstrating the principal characteristics of a range of landscapes or environments, the attributes of which identify it as being characteristic of its class				
Importance in demonstrating the principal characteristics of human activities (including way of life, philosophy, custom, process, land-use, function, design or technique) in the environment of the nation, province, region or locality.				
<b>7. Sphere of Significance</b>		High	Medium	Low
International				
National				
Provincial				
Regional				
Local				
Specific community				
<b>8. Significance rating of feature</b>				
1.	Low			
2.	Medium			
3.	High			

## APPENDIX 2. RELEVANT LEGISLATION

All archaeological and palaeontological sites and meteorites are protected by the National Heritage Resources Act (Act no 25 of 1999) as stated in Section 35:

(1) Subject to the provisions of section 8, the protection of archaeological and palaeontological sites and material and meteorites is the responsibility of a provincial heritage resources authority: Provided that the protection of any wreck in the territorial waters and the maritime cultural zone shall be the responsibility of SAHRA.

(2) Subject to the provisions of subsection (8)(a), all archaeological objects, palaeontological material and meteorites are the property of the State. The responsible heritage authority must, on behalf of the State, at its discretion ensure that such objects are lodged with a museum or other public institution that has a collection policy acceptable to the heritage resources authority and may in so doing establish such terms and conditions as it sees fit for the conservation of such objects.

(3) Any person who discovers archaeological or palaeontological objects or material or a meteorite in the course of development or agricultural activity must immediately report the find to the responsible heritage resources authority, or to the nearest local authority offices or museum, which must immediately notify such heritage resources authority.

(4) No person may, without a permit issued by the responsible heritage resources authority-

- (a) destroy, damage, excavate, alter, deface or otherwise disturb any archaeological or palaeontological site or any meteorite;
- (b) destroy, damage, excavate, remove from its original position, collect or own any archaeological or palaeontological material or object or any meteorite;
- (c) trade in, sell for private gain, export or attempt to export from the Republic any category of archaeological or palaeontological material or object, or any meteorite; or
- (d) bring onto or use at an archaeological or palaeontological site any excavation equipment or any equipment which assist in the detection or recovery of metals or archaeological and palaeontological material or objects, or use such equipment for the recovery of meteorites.

In terms of cemeteries and graves the following (Section 36):

(1) Where it is not the responsibility of any other authority, SAHRA must conserve and generally care for burial grounds and graves protected in terms of this section, and it may make such arrangements for their conservation as it sees fit.

(2) SAHRA must identify and record the graves of victims of conflict and any other graves which it deems to be of cultural significance and may erect memorials associated with the grave referred to in subsection (1), and must maintain such memorials.

(3) No person may, without a permit issued by SAHRA or a provincial heritage resources authority-

- (a) destroy, damage, alter, exhume or remove from its original position or otherwise disturb the grave of a victim of conflict, or any burial ground or part thereof which contains such graves;
- (b) destroy, damage, alter, exhume, remove from its original position or otherwise disturb any grave or burial ground older than 60 years which is situated outside a formal cemetery administered by a local authority; or
- (c) bring onto or use at a burial ground or grave referred to in paragraph (a) or (b) any excavation equipment, or any equipment which assists in the detection or recovery of metals.

(4) SAHRA or a provincial heritage resources authority may not issue a permit for the destruction or damage of any burial ground or grave referred to in subsection (3)(a) unless it is satisfied that the applicant has made satisfactory arrangements for the exhumation and re-interment of the contents of such graves, at the cost of the applicant and in accordance with any regulations made by the responsible heritage resources authority.

The National Heritage Resources Act (Act no 25 of 1999) stipulates the assessment criteria and grading of archaeological sites. The following categories are distinguished in Section 7 of the Act:

- **Grade I:** Heritage resources with qualities so exceptional that they are of special national significance;
- **Grade II:** Heritage resources which, although forming part of the national estate, can be considered to have special qualities which make them significant within the context of a province or a region; and
- **Grade III:** Other heritage resources worthy of conservation, and which prescribes heritage resources assessment criteria, consistent with the criteria set out in section 3(3), which must be used by a heritage resources authority or a local authority to assess the intrinsic, comparative and contextual significance of a heritage resource and the relative benefits and costs of its protection, so that the appropriate level of grading of the resource and the consequent responsibility for its management may be allocated in terms of section 8.

Presenting archaeological sites as part of tourism attraction requires, in terms 44 of the Act, a Conservation Management Plan as well as a permit from SAHRA.

(1) Heritage resources authorities and local authorities must, wherever appropriate, co-ordinate and promote the presentation and use of places of cultural significance and heritage resources which form part of the national estate and for which they are responsible in terms of section 5 for public enjoyment, education, research and tourism, including-

- (a) the erection of explanatory plaques and interpretive facilities, including interpretive centres and visitor facilities;
- (b) the training and provision of guides;
- (c) the mounting of exhibitions;
- (d) the erection of memorials; and
- (e) any other means necessary for the effective presentation of the national estate.

(2) Where a heritage resource which is formally protected in terms of Part I of this Chapter is to be presented, the person wishing to undertake such presentation must, at least 60 days prior to the institution of interpretive measures or manufacture of associated material, consult with the heritage resources authority which is responsible for the protection of such heritage resource regarding the contents of interpretive material or programmes.

(3) A person may only erect a plaque or other permanent display or structure associated with such presentation in the vicinity of a place protected in terms of this Act in consultation with the heritage resources authority responsible for the protection of the place.