

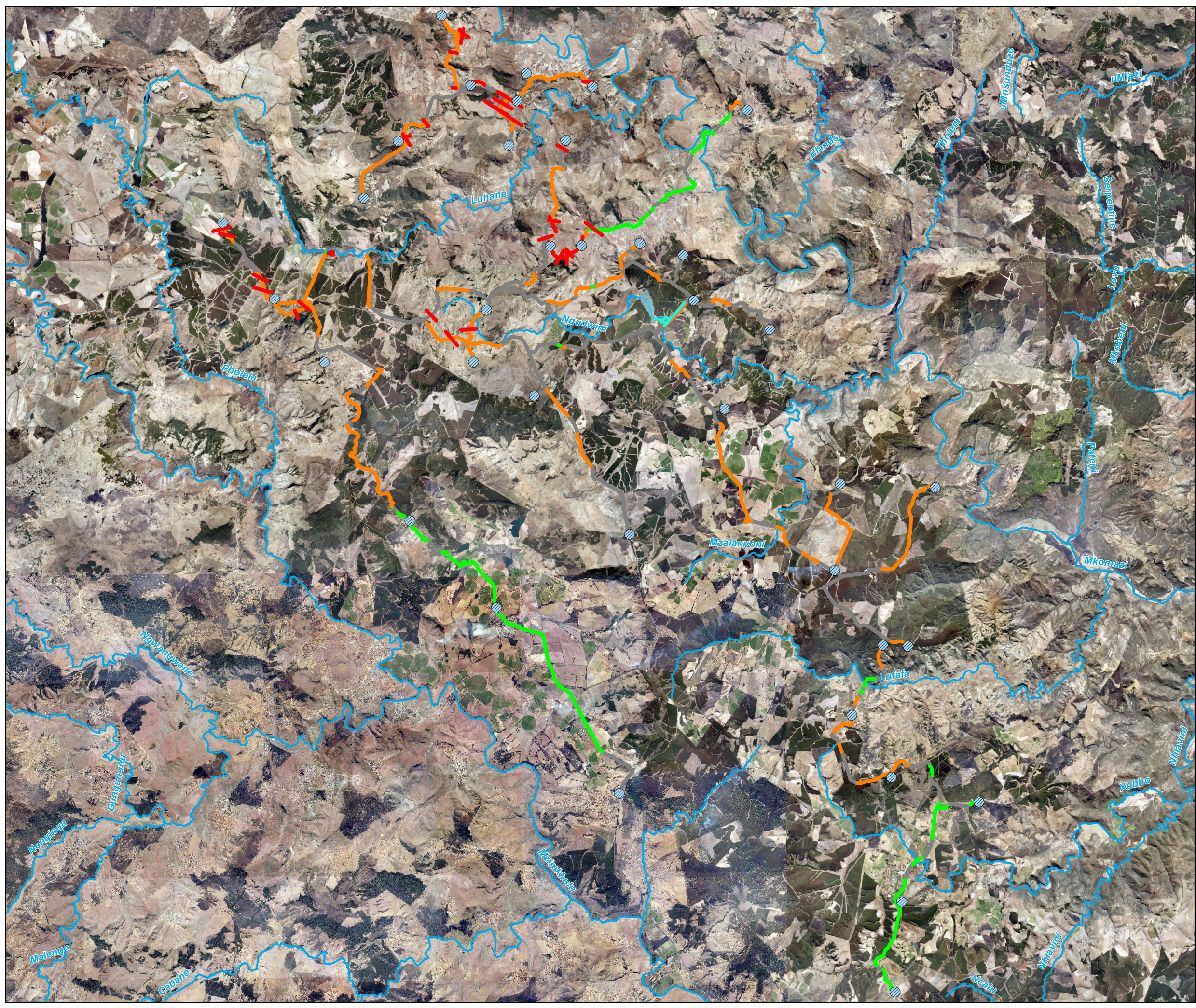


# Greater Bulwer / Donnybrook Bulk Water Scheme

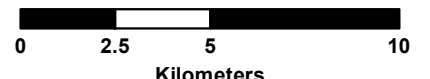
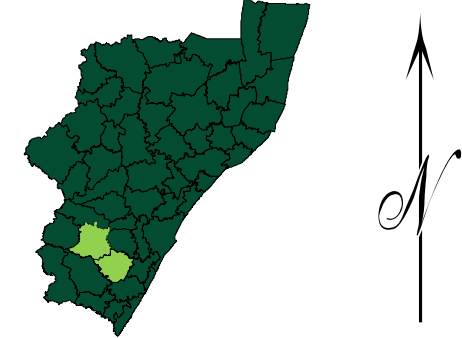
Palaeontological  
Significance / Vulnerability  
Overview Map  
1:200 000

## Legend

- VERY HIGH - Sensitivity / Vulnerability
- HIGH - Sensitivity / Vulnerability
- MODERATE - Sensitivity / Vulnerability
- VERY LOW - Sensitivity / Vulnerability
- Proposed Reservoirs
- Ngudwini Dam
- Rivers



KwaZulu-Natal: Ingwe & Ubuhlebezwe Municipalities



SOURCE: Chief Directorate of Survey & Mapping  
Aerial Imagery: 2009

**KINVIG & ASSOCIATES**  
ENVIRONMENTAL CONSULTING

Kinvig & Associates (PTY) Ltd  
Suite 3 Park Villages  
Victoria Country Club Estate  
Montrose  
Pietermaritzburg  
South Africa  
3201

Phone: +27 83 463 2919  
e-mail: richard@kaec.co.za

Project No	Map Ref No	Prepared By	Date
0008a	PSVOM 1.0	LVB	05.01.2017