



An EOH Company

**INTERDESIGN: PROPOSED MIXED USE DEVELOPMENT ON ERVEN 1 AND 2 OF A PORTION OF THE REMAINING EXTENT OF THE FARM WATERKLOOF 378JR, AND ASSOCIATED UPGRADE OF SOLOMON MAHLANGU DRIVE, CITY OF TSHWANE, GAUTENG PROVINCE**

**Archaeological Impact Assessment**



**Innovation in  
Sustainability**

The logo for EOH, consisting of the letters 'EOH' in a bold, white, sans-serif font with a small triangle above the 'O'.

Prepared for: **Interdesign**

Prepared by: **Exigo Sustainability**

## **ARCHAEOLOGICAL IMPACT ASSESSMENT (AIA) OF AREAS DEMARCTED FOR A PROPOSED MIXED USE DEVELOPMENT ON ERVEN 1 AND 2 OF A PORTION OF THE REMAINING EXTENT OF THE FARM WATERKLOOF 378JR, AND ASSOCIATED UPGRADE OF SOLOMON MAHLANGU DRIVE, CITY OF TSHWANE, GAUTENG PROVINCE**

---

April 2017

### **Conducted on behalf of:**

Interdesign  
Exigo Sustainability

### **Compiled by:**

Nelius Kruger (BA, BA Hons. Archaeology Pret.)

### **Reviewed by:**

Mazolo Dube (EAP – INTERDESIGN)

### **Document History**

Document Version 1 (Draft) – 1 November 2016  
Document Version 2 (Draft) – 18 April 2017



An EOH Company

**Email** info@exigo3.com  
**Tel** +27 012 751 2160  
**Fax** +27 086 607 2406

The Village Office Park (Block E),  
309 Glenwood Road, Faerie Glen,  
Pretoria, 0043

Postnet Suite 74,  
Private Bag X07,  
Arcadia, 0007

Innovation in  
Sustainability

[www.exigo3.com](http://www.exigo3.com)

Although Exigo Sustainability exercises due care and diligence in rendering services and preparing documents, Exigo Sustainability accepts no liability, and the client, by receiving this document, indemnifies Exigo Sustainability and its directors, managers, agents and employees against all actions, claims, demands, losses, liabilities, costs, damages and expenses arising from or in connection with services rendered, directly or indirectly by Exigo Sustainability and by the use of the information contained in this document.

This document contains confidential and proprietary information equally shared between Exigo Sustainability and Interdesign, and is protected by copyright in favour of these companies and may not be reproduced, or used without the written consent of these companies, which has been obtained beforehand. This document is prepared exclusively for Interdesign and is subject to all confidentiality, copyright and trade secrets, rules, intellectual property law and practices of South Africa.

Exigo Sustainability promotes the conservation of sensitive archaeological and heritage resources and therefore uncompromisingly adheres to relevant Heritage Legislation (National Heritage Resources Act no. 25 of 1999, Human Tissue Act 65 of 1983 as amended, Removal of Graves and Dead Bodies Ordinance no. 7 of 1925, Excavations Ordinance no. 12 of 1980). In order to ensure best practices and ethics in the examination, conservation and mitigation of archaeological and heritage resources, Exigo Sustainability follows the Minimum Standards: Archaeological and Palaeontological Components of Impact Assessment as set out by the South African Heritage Resources Agency (SAHRA) and the CRM section of the Association for South African Professional Archaeologists (ASAPA).

---

**DECLARATION**

---

I, Nelius Le Roux Kruger, declare that –

- I act as the independent specialist;
- I am conducting any work and activity relating to the proposed Mixed Use Development on Farm Waterkloof in an objective manner, even if this results in views and findings that are not favourable to the client;
- I declare that there are no circumstances that may compromise my objectivity in performing such work;
- I have the required expertise in conducting the specialist report and I will comply with legislation, including the relevant Heritage Legislation (National Heritage Resources Act no. 25 of 1999, Human Tissue Act 65 of 1983 as amended, Removal of Graves and Dead Bodies Ordinance no. 7 of 1925, Excavations Ordinance no. 12 of 1980), the Minimum Standards: Archaeological and Palaeontological Components of Impact Assessment (SAHRA, NC-PHRA and the CRM section of ASAPA), regulations and any guidelines that have relevance to the proposed activity;
- I have not, and will not engage in, conflicting interests in the undertaking of the activity;
- I undertake to disclose to the applicant and the competent authority all material information in my possession that reasonably has or may have the potential of influencing - any decision to be taken with respect to the application by the competent authority; and - the objectivity of any report, plan or document to be prepared by myself for submission to the competent authority;
- All the particulars furnished by me in this declaration are true and correct.



---

**Signature of Specialist:** Neels Kruger  
**Company:** Exigo Sustainability  
**Date:** 18 April 2017



## EXECUTIVE SUMMARY

---

This report details the results of an Archaeological Impact Assessment (AIA) study on Erven 1 and 2 situated on a Portion of the Remaining Extent of the Farm Waterkloof 378-JR in along the southern outskirts of Pretoria in the Gauteng Province, subject to an Environmental Impact Assessment (EIA) for a Mixed Use Development on property. The project involves the development of a mixed use development over a surface area of approximately 80ha. The assessment was conducted subject to requirements as set out by the National Environmental Management Act (Act 107 of 1998), the National Heritage Resources Act (NHRA - Act 25 of 1999). The report includes background information on the area's archaeology, its representation in southern Africa, and the history of the larger area under investigation, survey methodology and results as well as heritage legislation and conservation policies. A copy of the report will be supplied to the provincial heritage agency (NC-PHRA) and recommendations contained in this document will be reviewed.

A large number of archaeological and historical studies have been conducted in and around Pretoria and these studies all infer a varied and rich heritage landscape. Specifically, Pretoria is very rich in history and remnants of cultural activities from the past. Stone Age artefacts have been documented on farms and properties in Pretoria East and towards the town of Cuillinan. Several of the old Batswana tribes take their origins back to the Highveld and Magaliesberg region during the 18<sup>th</sup> century and 19<sup>th</sup> century. Moving into recent times, the first South African War of Independence (1880-1881) and the Anglo-Boer War (1899-1902) had a significant influence on the town of Pretoria and its environs, and many battles were fought over control over the capital in previous centuries.

The project are represents important European settlement developments in the old Zuid-Afrikaanse Republiek and even though the area has been altered extensively by recent and historical activities largely sterilising the area of heritage remains, a number of sites of heritage potential were noted. The following recommendations provide a guideline for the management of the heritage landscape in and around the proposed Mixed Use Development on the Farm Waterkloof:

- A Palaeontological Desktop Study should be considered for the development. Should fossil remains such as fossil fish, reptiles or petrified wood be exposed during construction, these objects should carefully safeguarded and the relevant heritage resources authority (SAHRA) should be notified immediately so that the appropriate action can be taken by a professional palaeontologist.
- Two apparent Historical Period sites (**Site EXIGO-MDW-HP01, Site EXIGO-MDW-HP02**) occur within the project area. At these sites, the remains of two poorly preserved building foundation structures occur in association with household middens containing seemingly Historical Period material culture. The foundations are of low significance due to the poor preservation of the structures but the midden deposits might potentially inform on local settlement and social developments on the historical Waterkloof property and these are rated as of medium significance. It is primarily recommended that the sites be avoided and that a 50m conservation buffer around the structures be implemented. However, should impact on the sites by development prove inevitable, the middens should be adequately documented by means of further Phase 2 Specialist Analysis (mapped, photographed and documented, described and contextualised by means of a desktop study, possible site sampling subject to the necessary excavation permits obtained from SAHRA). If impact on the foundations

structures is foreseen, the necessary destruction permits should be obtained from the relevant Heritage Resources Authorities (G-PHRA) prior to the destruction of these features.

- A religious meeting place, possibly associated with the ZCC, occurs within the project area but the site is of low heritage significance due a more recent temporal context thereof. However, it is recommended that the site and any activities in its surrounds be monitored in order to avoid the destruction of previously undetected heritage remains. It is suggested that local communities be consulted with regards to religious meeting places in the project area and their possible social meanings. This could form part of the Social impact Assessment (SIA) for the project.
- Generally, a careful watching brief monitoring process is recommended whereby an informed ECO inspect the construction sites on regular basis in order to monitor possible impact on heritage resources. Should any subsurface paleontological, archaeological or historical material or heritage resources be exposed during construction activities, all activities should be suspended and the archaeological specialist should be notified immediately It is essential that cognisance be taken of the larger archaeological landscape of the area in order to avoid the destruction of previously undetected heritage sites. Should any subsurface paleontological / archaeological / historical material and /or graves/human remains be uncovered, all activities should be suspended and the archaeological specialist should be alerted immediately. It should be noted that mitigation measures are valid for the duration of the development process, and mitigation measures might have to be implemented on additional features of heritage importance not detected during this Phase 1 assessment (e.g. uncovered during the construction process).

**Mixed Use Development on the Farm Waterkloof - Documented Site Locations:**

Site Code	Short Description	Coordinate S E	Mitigation Action
Site EXIGO-MDW-HP01	Historical Period Sites: - middens - foundations	S25.81846° E28.24296°	Avoidance, conservation buffer, site monitoring. Phase 2 documentation (middens) & destruction permitting (foundations) if impacted on. General site monitoring by informed ECO.
Site EXIGO-MDW-HP02		S25.81878° E28.24317°	

***Sensitive heritage resources occur inside areas proposed for the proposed Mixed Use Development on the farm Waterkloof 378JR and the mitigation and management of these resources are required for the duration of the development. In the opinion of the author of this Archaeological Impact Assessment Report, the proposed project may proceed from a culture resources management perspective, provided that mitigation measures, endorsed by the relevant Heritage Resources authority, are implemented where applicable, and provided that no subsurface heritage remains are encountered during construction.***

It is essential that cognisance be taken of the larger archaeological landscape of the Gauteng Province and the Pretoria region in order to avoid the destruction of previously undetected heritage sites. Should any previously undetected heritage resources be exposed or uncovered during construction phases of the proposed project, these should immediately be reported to the Gauteng-PHRA. Since the intrinsic heritage and social value of graves and cemeteries are highly significant, these resources require special management measures. Should human remains be discovered at any stage, these should be reported to the Heritage Specialist and relevant authorities (Gauteng-PHRA SAHRA) and development activities should be suspended until the site has been inspected by the Specialist. The Specialist will advise on further management actions and possible relocation of

human remains in accordance with the Human Tissue Act (Act 65 of 1983 as amended), the Removal of Graves and Dead Bodies Ordinance (Ordinance no. 7 of 1925), the National Heritage Resources Act (Act no. 25 of 1999) and any local and regional provisions, laws and by-laws pertaining to human remains. A full social consultation process should occur in conjunction with the mitigation of cemeteries and burials.

This report details the methodology, limitations and recommendations relevant to these heritage areas, as well as areas of proposed development. It should be noted that recommendations and possible mitigation measures are valid for the duration of the development process, and mitigation measures might have to be implemented on additional features of heritage importance not detected during this Phase 1 assessment (e.g. uncovered during the construction process).

## NOTATIONS AND TERMS

---

**Absolute dating:**

Absolute dating provides specific dates or range of dates expressed in years.

**Archaeology:**

The study of the human past through its material remains.

**Archaeological record:**

The archaeological record minimally includes all the material remains documented by archaeologists. More comprehensive definitions also include the record of culture history and everything written about the past by archaeologists.

**Artefact:**

Entities whose characteristics result or partially result from human activity. The shape and other characteristics of the artefact are not altered by removal of the surroundings in which they are discovered. In the southern African context examples of artefacts include potsherds, iron objects, stone tools, beads and hut remains.

**Ceramic Facies:**

In terms of the cultural representation of ceramics, a facies is denoted by a specific branch of a larger ceramic tradition. A number of ceramic facies thus constitute a ceramic tradition.

**Ceramic Tradition:**

In terms of the cultural representation of ceramics, a series of ceramic units constitutes as ceramic tradition.

**Context:**

An artefact's context usually consists of its immediate *matrix*, its *provenience* and its *association* with other artefacts. When found in *primary context*, the original artefact or structure was undisturbed by natural or human factors until excavation and if in *secondary context*, disturbance or displacement by later ecological action or human activities occurred.

**Culture:**

A contested term, "culture" could minimally be defined as the learned and shared things that people have, do and think.

**Cultural Heritage Resource:**

The broad generic term *Cultural Heritage Resources* refers to any physical and spiritual property associated with past and present human use or occupation of the environment, cultural activities and history. The term includes sites, structures, places, natural features and material of palaeontological, archaeological, historical, aesthetic, scientific, architectural, religious, symbolic or traditional importance to specific individuals or groups, traditional systems of cultural practice, belief or social interaction.

**Cultural landscape:**

A cultural landscape refers to a distinctive geographic area with cultural significance.

**Cultural Resource Management (CRM):**

A system of measures for safeguarding the archaeological heritage of a given area, generally applied within the framework of legislation designed to safeguard the past.

**Ecofact:**

Non artefactual material remains that has cultural relevance which provides information about past human activities. Examples would include remains or evidence of domesticated animals or plant species.

**Excavation:**

The principal method of data acquisition in archaeology, involving the systematic uncovering of archaeological remains through the removal of the deposits of soil and the other material covering and accompanying it.

**Feature:**

Non-portable artefacts, in other words artefacts that cannot be removed from their surroundings without destroying or altering their original form. Hearths, roads, and storage pits are examples of archaeological features

**GIS:**

Geographic Information Systems are computer software that allows layering of various types of data to produce complex maps; useful for predicting site location and for representing the analysis of collected data within sites and across regions.

**Historical / Colonial archaeology:**

Primarily that aspect of archaeology which is complementary to history based on the study of written sources. In the South African context it concerns the recovery and interpretation of relics left in the ground in the course of Europe's discovery of South Africa, as well as the movements of the indigenous groups during, and after the "Great Scattering" of Bantu-speaking groups – known as the *mfecane* or *difaqane*.

**Impact:** A description of the effect of an aspect of the development on a specified component of the biophysical, social or economic environment within a defined time and space.

**Iron Age:**

Also known as "Farmer Period", the "Iron Age" is an archaeological term used to define a period associated with domesticated livestock and grains, metal working and ceramic manufacture.

**Lithic:**

Stone tools or waste from stone tool manufacturing found on archaeological sites.

**Management / Management Actions:**

Actions – including planning and design changes - that enhance benefits associated with a proposed development, or that avoid, mitigate, restore, rehabilitate or compensate for the negative impacts.

**Midden:**

Refuse that accumulates in a concentrated heap.

**Microlith:**

A small stone tool, typically knapped of flint or chert, usually about three centimetres long or less.

**Monolith:**

A geological feature such as a large rock, consisting of a single massive stone or rock, or a single piece of rock placed as, or within, a monument or site.

**Oral Histories:**

The historical narratives, stories and traditions passed from generation to generation by word of mouth.

**Phase 1 CRM Assessment:**

An Impact Assessment which identifies archaeological and heritage sites, assesses their significance and comments on the impact of a given development on the sites. Recommendations for site mitigation or conservation are also made during this phase.

**Phase 2 CRM Study:**

In-depth studies which could include major archaeological excavations, detailed site surveys and mapping / plans of sites, including historical / architectural structures and features. Alternatively, the sampling of sites by collecting material, small test pit excavations or auger sampling is required. Mitigation / Rescue involves planning the protection of significant sites or sampling through excavation or collection (in terms of a permit) at sites that may be lost as a result of a given development.

**Phase 3 CRM Measure:**

A Heritage Site Management Plan (for heritage conservation), is required in rare cases where the site is so important that development will not be allowed and sometimes developers are encouraged to enhance the value of the sites retained on their properties with appropriate interpretive material or displays.

**Provenience**

Provenience is the three-dimensional (horizontal and vertical) position in which artefacts are found. Fundamental to ascertaining the provenience of an artefact is *association*, the co-occurrence of an artefact with other archaeological remains; and *superposition*, the principle whereby artefacts in lower levels of a matrix were deposited before the artefacts found in the layers above them, and are therefore older.

**Random Sampling:**

A probabilistic sampling strategy whereby randomly selected sample blocks in an area are surveyed. These are fixed by drawing coordinates of the sample blocks from a table of random numbers.

**Relative dating:**

The process whereby the relative antiquity of sites and objects are determined by putting them in sequential order but not assigning specific dates.

**Rock Art Research:**

Rock art can be "decoded" in order to inform about cultural attributes of prehistoric societies, such as dress-code, hunting and food gathering, social behaviour, religious practice, gender issues and political issues.

**Scoping Assessment:**

The process of determining the spatial and temporal boundaries (i.e. extent) and key issues to be addressed in an impact assessment. The main purpose is to focus the impact assessment on a manageable number of important questions on which decision making is expected to focus and to ensure that only key issues and reasonable alternatives are examined. The outcome of the scoping process is a Scoping Report that includes issues raised during the scoping process, appropriate responses and, where required, terms of reference for specialist involvement.

**Sensitive:**

Often refers to graves and burial sites although not necessarily a heritage place, as well as ideologically significant sites such as ritual / religious places. *Sensitive* may also refer to an entire landscape / area known for its significant heritage remains.

**Site (Archaeological):**

A distinct spatial clustering of artefacts, features, structures, and organic and environmental remains, as the residue of human activity. These include surface sites, caves and rock shelters, larger open-air sites, sealed sites (deposits) and river deposits. Common functions of archaeological sites include living or habitation sites, kill sites, ceremonial sites, burial sites, trading, quarry, and art sites,

**Slag:**

The material residue of smelting processes from metalworking.

**Stone Age:**

An archaeological term used to define a period of stone tool use and manufacture.

**Stratigraphy:**

This principle examines and describes the observable layers of sediments and the arrangement of strata in deposits

**Systematic Sampling:**

A probabilistic sampling strategy whereby a grid of sample blocks is set up over the survey area and each of these blocks is equally spaced and searched.

**Tradition:**

Artefact types, assemblages of tools, architectural styles, economic practices or art styles that last longer than a phase and even a horizon are describe by the term *tradition*. A common example of this is the early Iron Age tradition of Southern Africa that originated ± 200 AD and came to an end at about 900 AD.

**Trigger:** A particular characteristic of either the receiving environment or the proposed project which indicates that there is likely to be an *issue* and/or potentially significant *impact* associated with that proposed development that may require specialist input. Legal requirements of existing and future legislation may also trigger the need for specialist involvement.

**Tuyère:**

A ceramic blow-tube used in the process of iron smelting / reduction.

**LIST OF ABBREVIATIONS**

Abbreviation	Description
ASAPA	Association for South African Professional Archaeologists
AIA	Archaeological Impact Assessment
BP	Before Present
BCE	Before Common Era
CRM	Culture Resources Management
EC-PHRA	Eastern Cape Provincial Heritage Resources Agency
EIA	Early Iron Age (also Early Farmer Period)
EIA	Environmental Impact Assessment
EFP	Early Farmer Period (also Early Iron Age)
ESA	Earlier Stone Age
GIS	Geographic Information Systems
HIA	Heritage Impact Assessment
ICOMOS	International Council on Monuments and Sites
K2/Map	K2/Mapungubwe Period
Gauteng PHRA	Gauteng Provincial Heritage Resources Authority
LFP	Later Farmer Period (also Later Iron Age)
LIA	Later Iron Age (also Later Farmer Period)
LSA	Later Stone Age
MIA	Middle Iron Age (also Early later Farmer Period)
MRA	Mining Right Area
MSA	Middle Stone Age
NHRA	National Heritage Resources Act No.25 of 1999, Section 35
PFS	Pre-Feasibility Study
NC - PHRA	Northern Cape Provincial Heritage Resources Authority
SAFA	Society for Africanist Archaeologists
SAHRA	South African Heritage Resources Association
YCE	Years before Common Era (Present)

**TABLE OF CONTENTS**

---

<b>EXECUTIVE SUMMARY .....</b>	<b>4</b>
<b>1 BACKGROUND.....</b>	<b>13</b>
1.1 SCOPE AND MOTIVATION .....	13
1.2 PROJECT DIRECTION .....	13
1.3 PROJECT BRIEF .....	13
1.4 TERMS OF REFERENCE .....	15
1.5 CRM: LEGISLATION, CONSERVATION AND HERITAGE MANAGEMENT.....	15
1.5.1 <i>Legislation regarding archaeology and heritage sites</i> .....	15
1.5.2 <i>Background to HIA and AIA Studies</i> .....	16
<b>2 REGIONAL CONTEXT.....</b>	<b>17</b>
2.1 AREA LOCATION .....	17
2.2 AREA DESCRIPTION: RECEIVING ENVIRONMENT .....	17
2.3 SITE DESCRIPTION .....	17
<b>3 METHOD OF ENQUIRY.....</b>	<b>20</b>
3.1 SOURCES OF INFORMATION .....	20
3.1.1 <i>Desktop Study</i> .....	20
3.1.2 <i>Aerial Representations and Survey</i> .....	20
3.1.3 <i>Mapping of sites</i> .....	21
3.1.4 <i>Field Survey</i> .....	21
3.2 LIMITATIONS.....	22
3.2.1 <i>Access</i> .....	22
3.2.2 <i>Visibility</i> .....	22
3.2.3 <i>Limitations and Constraints</i> .....	27
3.3 IMPACT ASSESSMENT .....	27
<b>4 ARCHAEO-HISTORICAL CONTEXT.....</b>	<b>28</b>
4.1 THE ARCHAEOLOGY OF SOUTHERN AFRICA.....	28
4.1.1 <i>The Stone Ages</i> .....	28
4.1.2 <i>The Iron Age Farmer Period</i> .....	30
4.1.3 <i>Pastoralism and the last 2000 years</i> .....	31
4.1.4 <i>Historical and Colonial Times and Recent History</i> .....	31
4.2 DISCUSSION: GREATER TSHWANE HERITAGE .....	32
4.2.1 <i>The Early and Middle Stone Ages</i> .....	32
4.2.2 <i>Iron Age / Farmer Period</i> .....	32
4.2.3 <i>Later History: Colonial Period and Living Heritage</i> .....	34
4.2.4 <i>Later History: Erasmuskloof and the Erasmus Legacy</i> .....	34
4.2.5 <i>Burial Sites / Human Remains</i> .....	36
<b>5 RESULTS: ARCHAEOLOGICAL SURVEY .....</b>	<b>36</b>
5.1 THE STONE AGE .....	36
5.2 THE IRON AGE FARMER PERIOD .....	36
5.3 HISTORICAL / COLONIAL PERIOD .....	36
5.4 CONTEMPORARY PERIOD / RECENT PAST .....	40
<b>6 RESULTS: STATEMENT OF SIGNIFICANCE AND IMPACT RATING .....</b>	<b>44</b>
6.1 POTENTIAL IMPACTS AND SIGNIFICANCE RATINGS .....	44
6.1.1 <i>General assessment of impacts on resources</i> .....	44

---

6.1.2	<i>Direct impact rating</i> .....	44
6.2	EVALUATION IMPACTS .....	45
6.2.1	<i>Archaeology</i> .....	45
6.2.2	<i>Built Environment</i> .....	45
6.2.3	<i>Cultural Landscape</i> .....	45
6.2.4	<i>Graves / Human Burials Sites</i> .....	45
6.3	MANAGEMENT ACTIONS .....	46
<b>7</b>	<b>RECOMMENDATIONS</b> .....	<b>47</b>
<b>8</b>	<b>GENERAL COMMENTS AND CONDITIONS</b> .....	<b>48</b>
<b>9</b>	<b>BIBLIOGRAPHY</b> .....	<b>50</b>
<b>10</b>	<b>ADDENDUM A: HERITAGE LEGISLATION BACKGROUND</b> .....	<b>52</b>
10.1	CRM: LEGISLATION, CONSERVATION AND HERITAGE MANAGEMENT.....	52
10.1.1	<i>Legislation regarding archaeology and heritage sites</i> .....	52
10.1.2	<i>Background to HIA and AIA Studies</i> .....	53
10.2	ASSESSING THE SIGNIFICANCE OF HERITAGE RESOURCES.....	55
	- CATEGORIES OF SIGNIFICANCE .....	55
<b>11</b>	<b>ADDENDUM B: GRAVE RELOCATION AND SITE MANAGEMENT: STATUTORY MANDATE</b> .....	<b>58</b>
11.1	ARCHAEOLOGY, GRAVES AND THE LAW .....	58
11.2	GRAVES: NECESSARY PROCEDURES .....	58
<b>12</b>	<b>ADDENDUM C: CONVENTIONS USED TO ASSESS THE SIGNIFICANCE OF HERITAGE</b> .....	<b>60</b>
12.1	SITE SIGNIFICANCE MATRIX .....	60
12.2	IMPACT ASSESSMENT CRITERIA.....	60
12.3	DIRECT IMPACT ASSESSMENT CRITERIA .....	62
12.4	MANAGEMENT AND MITIGATION ACTIONS.....	63



**LIST OF FIGURES**

---

Figure 1-1: Project map indicating the location of the proposed project. ....	14
Figure 2-1: 1:50 00 Map representation of the location of the Mixed Use Development on Farm Waterkloof (sheet 2528CC). ....	18
Figure 2-2: Aerial map of the Erasmusrand area providing a regional background to the landscape around the Mixed Use Development on Farm Waterkloof. ....	19
Figure 3-1: Historical aerial imagery indicating the position of the study area in 1960. ....	20
Figure 3-2: Desktop aerial map analysis of the project area, indicating areas of possible interest for the heritage survey. ....	21
Figure 3-3: GPS track log for the heritage site survey. ....	21
Figure 3-4: General surroundings in the project area along its eastern border. ....	22
Figure 3-5: A footpath in the project area, looking south. ....	23
Figure 3-6: View of a large advertising billboard on the north-eastern corner of the project area. ....	23
Figure 3-7: Surface disturbances and refuse dumps along the south-west of the project area. ....	23
Figure 3-8: View from a small ridge along the northern periphery of the study area. ....	24
Figure 3-9: Large heaps of building material in the study area. ....	24
Figure 3-10: A clearing in a central portion of the project area. ....	24
Figure 3-11: Surface disturbances and building refuse dumps along the south-west of the project area. ....	25
Figure 3-12: View of the project area, looking east. ....	25
Figure 3-13: View of a small drainage line along the southern border of the study area. ....	25
Figure 3-14: Short grass and a Eucalyptus tree furrow on the south-western corner of the project area. ....	26
Figure 3-15: View of a modern house on a western section of the project area. ....	26
Figure 3-16: A rocky outcrop to the north-west of the study area. ....	26
Figure 3-17: A livestock pen, part of a compound in the north-west of the study area. ....	27
Figure 4-1: A map of the Transvaal at the turn of the 19 <sup>th</sup> century. ....	35
Figure 4-2: The well-known Erasmus Castle shortly after completion in 1903. ....	35
Figure 5-1: A historical aerial photo of the project area (red line) indicating the assumed position of the Historical Period compounds discussed in the text. ....	37
Figure 5-2: A brick foundation visible on the surface at Site Exigo MDW-HP01. ....	37
Figure 5-3: The remains of a brick wall at Site Exigo MDW-HP01. ....	38
Figure 5-4: A large ash midden at Site Exigo MDW-HP01. ....	38
Figure 5-5: Metal, porcelain and glass visible in the midden deposit at Site Exigo MDW-HP01. ....	38
Figure 5-6: Collapsed walling and brick foundations at Site Exigo MDW-HP02. ....	39
Figure 5-7: An ash midden at Site Exigo MDW-HP02. ....	39
Figure 5-8: Porcelain and a metal loop from the midden at Site Exigo MDW-HP02. ....	39
Figure 5-9: Scattered stones and clay bricks at Site Exigo MDW-HP02. ....	40
Figure 5-10: An upright stone of unknown function at Site Exigo MDW-HP02. ....	40
Figure 5-11: A modern house in the study area. ....	41
Figure 5-12: View of a recent period clearing, possibly a religious meeting place in the study area. ....	41
Figure 5-13: Topographical map indicating the locations of all heritage occurrences discussed in the text. ....	42
Figure 5-14: Aerial map indicating the locations of all heritage occurrences discussed in the text. ....	43

## **1 BACKGROUND**

---

### **1.1 Scope and Motivation**

Exigo Sustainability was commissioned by Interdesign for an Archaeological Impact Assessment (AIA) study subject to an Environmental Impact Assessment for a Mixed Use Development on the farm Waterkloof 378JR along the southern outskirts of Pretoria in the Gauteng Province. The rationale of this AIA is to determine the presence of heritage resources such as archaeological and historical sites and features, graves and places of religious and cultural significance in previously unstudied areas; to consider the impact of the proposed project on such heritage resources, and to submit appropriate recommendations with regard to the cultural resources management measures that may be required at affected sites / features.

### **1.2 Project Direction**

Exigo Sustainability's expertise ensures that all projects be conducted to the highest international ethical and professional standards. As archaeological specialist for Exigo Sustainability, Mr Neels Kruger acted as field director for the project; responsible for the assimilation of all information, the compilation of the final consolidated AIA report and recommendations in terms of heritage resources on the demarcated project areas. Mr Kruger is an accredited archaeologist and Culture Resources Management (CRM) practitioner with the Association of South African Professional Archaeologists (ASAPA), a member of the Society for Africanist Archaeologists (SAFA) and the Pan African Archaeological Association (PAA) as well as a Master's Degree candidate in archaeology at the University of Pretoria.

### **1.3 Project Brief**

Atterbury Property Fund Managers (Pty) Ltd propose to develop a mixed use commercial development on Erven 1 and 2 situated on a Portion of the Remaining Extent of the Farm Waterkloof 378JR, south east of Pretoria between the R21 and N1 highway. A portion of the Remaining Extent of the Farm Waterkloof 378 JR measures approximately 70.8711 Hectares in total extent, while Erven 1 and 2 occupy approximately a third of the total extent ( $\pm 22$  Hectares). The main future access to the development site will be from Solomon Mahlangu Drive, proposed for upgrade into a dual carriage-way within the existing road reserve.

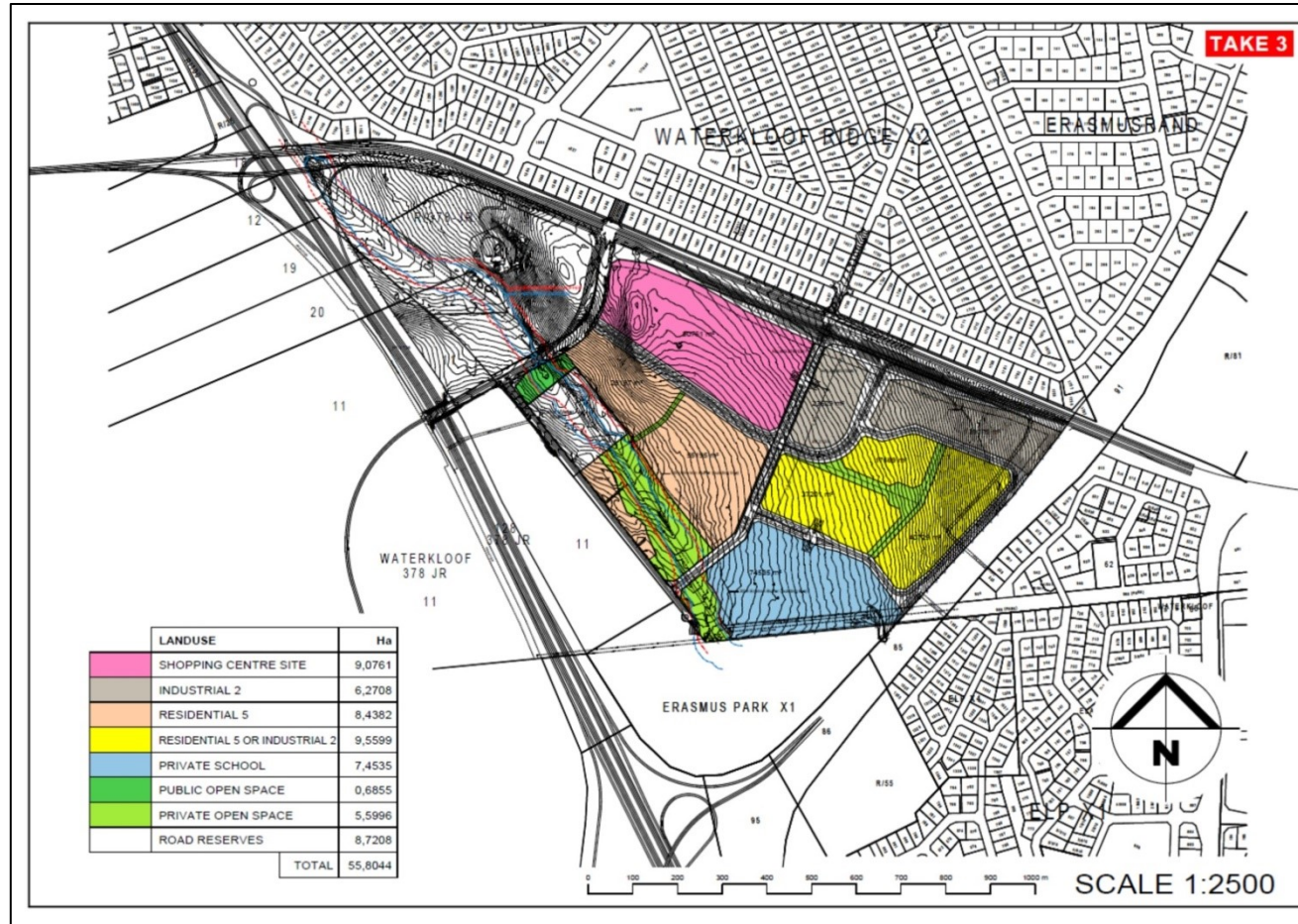


Figure 1-1: Project map indicating the location of the proposed project.

#### 1.4 Terms of Reference

Heritage specialist input into the Environmental Impact Assessment (EIA) process is essential to ensure that through the management of change, developments still conserve our heritage resources. Heritage specialist input in EIA processes can play a positive role in the development process by enriching an understanding of the past and its contribution to the present. It is also a legal requirement for certain development categories which may have an impact on heritage resources (Refer to Section 2.5.2).

Thus, EIAs should always include an assessment of Heritage Resources. The heritage component of the EIA is provided for in the **National Environmental Management Act, (Act 107 of 1998)** and endorsed by section 38 of the **National Heritage Resources Act (NHRA - Act 25 of 1999)** and the **KwaZulu-Natal Heritage Act (KZNHRA - Act of 2008)**. In addition, the NHRA and the KZNHRA protects all structures and features older than 60 years, archaeological sites and material and graves as well as burial sites. The objective of this legislation is to ensure that developers implement measures to limit the potentially negative effects that the development could have on heritage resources.

Based hereon, this project functioned according to the following **terms of reference for** heritage specialist input:

- *Provide detailed updated description of all additional archaeological artefacts, structures (including graves) and settlements which may be affected, if any.*
- *Assess the nature and degree of significance of such resources within the area.*
- *Establish heritage informants/constraints to guide the development process through establishing thresholds of impact significance.*
- *Assess any possible impact on the archaeological and historical remains within the area emanating from the proposed development activities.*
- *Propose possible heritage management measures provided that such action is necessitated by the development.*
- *Obtain a comment from the EC-PHRA.*

#### 1.5 CRM: Legislation, Conservation and Heritage Management

The broad generic term *Cultural Heritage Resources* refers to any physical and spiritual property associated with past and present human use or occupation of the environment, cultural activities and history. The term includes sites, structures, places, natural features and material of palaeontological, archaeological, historical, aesthetic, scientific, architectural, religious, symbolic or traditional importance to specific individuals or groups, traditional systems of cultural practice, belief or social interaction.

##### 1.5.1 Legislation regarding archaeology and heritage sites

The South African Heritage Resources Agency (SAHRA) and their provincial offices aim to conserve and control the management, research, alteration and destruction of cultural resources of South Africa. It is therefore vitally important to adhere to heritage resource legislation at all times.

### 1.5.2 Background to HIA and AIA Studies

South Africa's unique and non-renewable archaeological and palaeontological heritage sites are 'generally' protected in terms of the National Heritage Resources Act (Act No 25 of 1999, section 35) and may not be disturbed at all without a permit from the relevant heritage resources authority. Heritage sites are frequently threatened by development projects and both the environmental and heritage legislation require impact assessments (HIAs & AIAs) that identify all heritage resources in areas to be developed. Particularly, these assessments are required to make recommendations for protection or mitigation of the impact of the sites. HIAs and AIAs should be done by qualified professionals with adequate knowledge to (a) identify all heritage resources including archaeological and palaeontological sites that might occur in areas of developed and (b) make recommendations for protection or mitigation of the impact on the sites.

**A detailed guideline of statutory terms and requirements is supplied in Addendum A.**

## 2 REGIONAL CONTEXT

---

### 2.1 Area Location

The Project area occurs along the southern outskirts of Pretoria in the Erasmus Park area of the City of Tswane Municipality, Gauteng Province. The proposed development footprint is situated at the following location:

- **S25.81675° E28.24742°**

The site is bordered to north by Solomon Mahlangu Drive and to the east by the N1 Highway. The R21 Highway passes directly south-west of the site and the Leisure Bay Residential Complex occurs along the south-eastern periphery of the site. The study areas appear on 1:50000 map sheet 2528CC (see Figure 2-1).

### 2.2 Area Description: Receiving Environment

The development site lies within the Savanna biome which is the largest biome in Southern Africa. It is characterized by a grassy ground layer and a distinct upper layer of woody plants (trees and shrubs). The most recent classification of the area by Mucina & Rutherford shows that the site is classified as Marikana Thornveld. The project area is characterised by slightly undulating to flat plains with a small drainage line forming the southern boundary. The topography across the site is slightly undulating. The study area is drained mainly by surface run-off with surface water flowing into non-perennial streams of the study area. This water eventually drains into the Apies River.

### 2.3 Site Description

The study area is located on Portions of the Farm Waterkloof. Certain portions of the study have been disturbed and transformed where a farming compound, pits and a quarries and refuse dumping occurs. General site modification as a result of topsoil removal, refuse dumping and informal settlement are prevalent throughout. However portions of the surface and vegetation remain intact along a drainage line to the south. A large advertisement billboard has been erected on the north-eastern corner of the site and homeless persons occupy a number of clearings on the property.



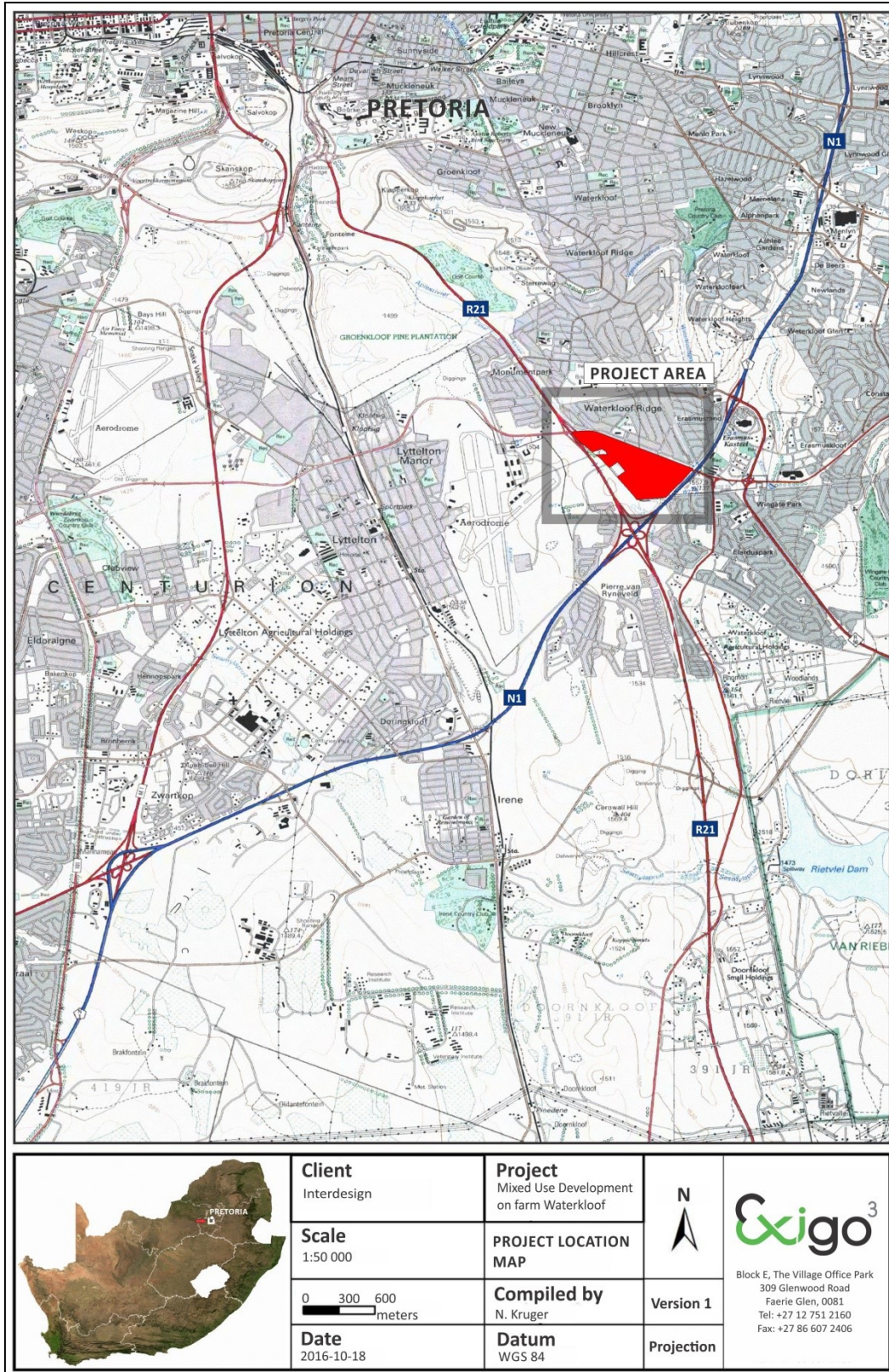


Figure 2-1: 1:50 00 Map representation of the location of the Mixed Use Development on Farm Waterkloof (sheet 2528CC).





Figure 2-2: Aerial map of the Erasmusrand area providing a regional background to the landscape around the Mixed Use Development on Farm Waterkloof.



### 3 METHOD OF ENQUIRY

---

#### 3.1 Sources of Information

Data from detailed desktop, aerial and field studies were employed in order to sample surface areas systematically and to ensure a high probability of heritage site recording.

##### 3.1.1 Desktop Study

A number of heritage studies have been conducted in the larger Pretoria area. Many of these studies have emanated from Impact Assessment measures for EIA purposes commissioned by the private sector. These studies all point to a rich heritage. For this purpose, a desktop study was prepared in order to contextualize the proposed project within a larger historical milieu. The study focused on relevant previous studies, archaeological and archival sources, aerial photographs, historical maps and local histories, all pertaining to the Douglas area and the larger landscape of this section of the Gauteng Province

##### 3.1.2 Aerial Representations and Survey

Aerial photography is often employed to locate and study archaeological sites, particularly where larger scale area surveys are performed. This method was applied to assist the pedestrian and automotive site surveys where depressions, variation in vegetation, soil marks and landmarks were examined. Specific attention was given to shadow sites (shadows of walls or earthworks which are visible early or late in the day), crop mark sites (crop mark sites are visible because disturbances beneath crops cause variations in their height, vigour and type) and soil marks (e.g. differently coloured or textured soil (soil marks) might indicate ploughed-out burial mounds). Attention was also given to moisture differences, as prolonged dampening of soil as a result of precipitation frequently occurs over walls or embankments. By superimposing high frequency aerial photographs with images generated with Google Earth, potential sensitive areas were subsequently identified, geo-referenced and transferred to a handheld GPS device. These areas served as referenced points from where further vehicular and pedestrian surveys were carried out. From the aerial survey it is evident that surface areas subject to the Mixed Use Development have been subjected to historical and more recent disturbances and impacts as a result of natural agents as well as agriculture and urbanisation.

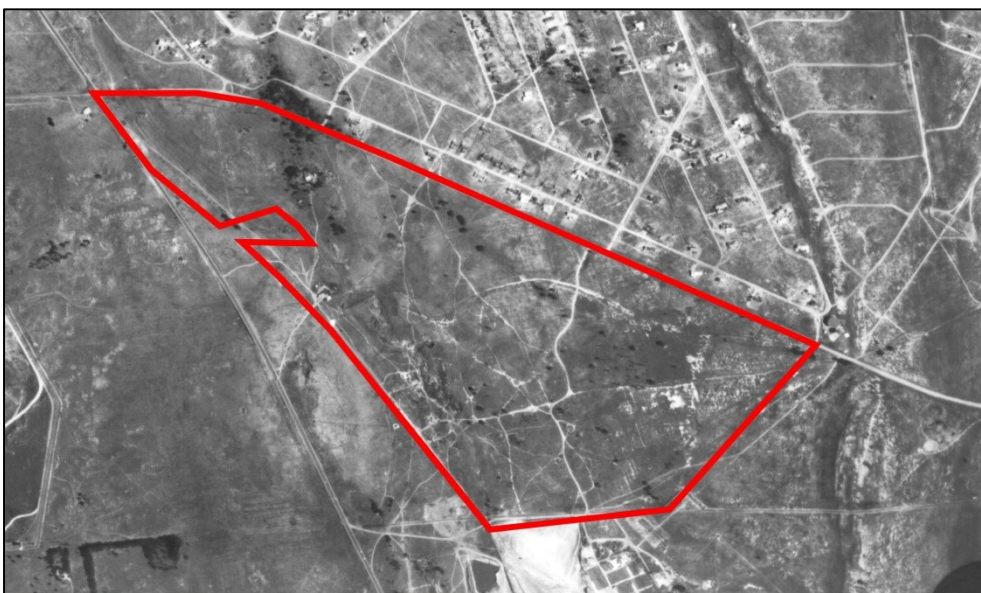


Figure 3-1: Historical aerial imagery indicating the position of the study area in 1960.



Figure 3-2: Desktop aerial map analysis of the project area, indicating areas of possible interest for the heritage survey.

### 3.1.3 Mapping of sites

By merging data generated during the desktop study and the aerial survey areas of heritage potential were plotted on 1:50 000 topographic maps of the Pretoria area using ArcGIS 9.3. These maps were then superimposed on high definition aerial representations in order to graphically demonstrate the geographical locations and distribution of sensitive areas. Information on areas with dense clusters of heritage sites were expanded in the text employing academic and research based literature.

### 3.1.4 Field Survey

Archaeological survey implies the systematic procedure of the identification of archaeological sites. An archaeological survey of the entire Mixed Use Development on Farm Waterkloof was conducted in September 2016. The process encompassed a systematic field survey in accordance with standard archaeological practice by which heritage resources are observed and documented. In order to sample surface areas systematically and to ensure a high probability of site recording the entire project footprint was surveyed on foot by means of a survey.

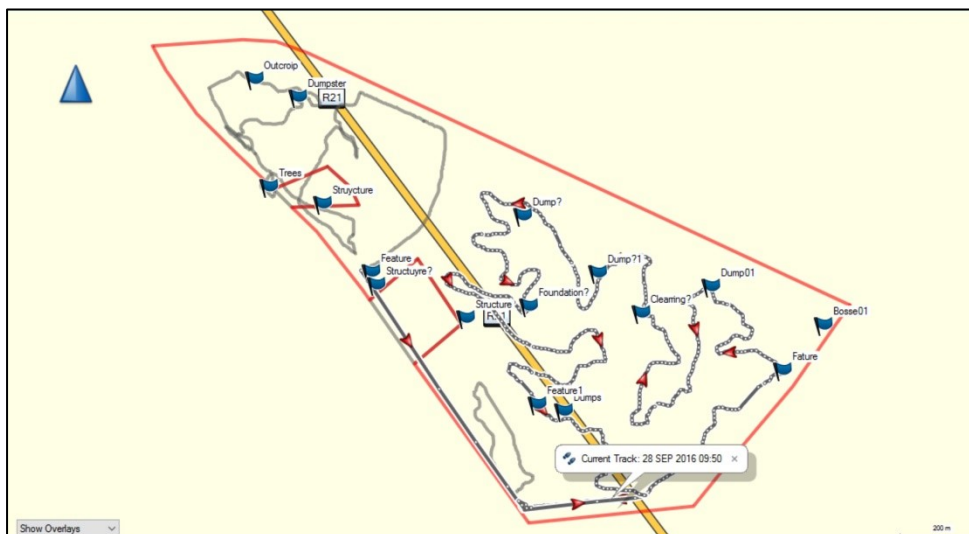


Figure 3-3: GPS track log for the heritage site survey.

In addition, spot checks were made in transformed zones in order to establish the integrity of surface deposits and heritage site potential. GPS reference points were visited and random spot checks were made throughout the site (see detail in previous section). Using a Garmin E-trex Legend GPS objects and structures of archaeological / heritage value were recorded and photographed with a Canon 450D Digital camera. Real time aerial orientation, by means of a mobile Google Earth application was also employed to investigate possible disturbed areas during the survey. As most archaeological material occur in single or multiple stratified layers beneath the soil surface, special attention was given to disturbances, both man-made such as roads and clearings, as well as those made by natural agents such as burrowing animals and erosion.

### 3.2 Limitations

#### 3.2.1 Access

The project area is easily accessed via Solomon Mahlangu Drive. Access control is not applied to the development site and no restrictions were encountered during the site visit.

#### 3.2.2 Visibility

The surrounding vegetation in the project area mostly comprised out of scattered grasslands and occasional trees. The general visibility at the time of the AIA survey (September 2016) was moderate due to dry climatic conditions and surface disturbances in places where the study area has been altered (see Figures 3-4 to 3-18). In single cases during the survey sub-surface inspection was possible. Where applied, this revealed no archaeological deposits.



Figure 3-4: General surroundings in the project area along its eastern border.





Figure 3-5: A footpath in the project area, looking south.



Figure 3-6: View of a large advertising billboard on the north-eastern corner of the project area.



Figure 3-7: Surface disturbances and refuse dumps along the south-west of the project area.





Figure 3-8: View from a small ridge along the northern periphery of the study area.



Figure 3-9: Large heaps of building material in the study area.



Figure 3-10: A clearing in a central portion of the project area.





Figure 3-11: Surface disturbances and building refuse dumps along the south-west of the project area.



Figure 3-12: View of the project area, looking east.



Figure 3-13: View of a small drainage line along the southern border of the study area.





Figure 3-14: Short grass and a Eucalyptus tree furrow on the south-western corner of the project area.



Figure 3-15: View of a modern house on a western section of the project area.



Figure 3-16: A rocky outcrop to the north-west of the study area.



Figure 3-17: A livestock pen, part of a compound in the north-west of the study area.

### 3.2.3 Limitations and Constraints

The following limitations were encountered during the site inspection for the proposed Mixed Use Development heritage survey:

- **Visibility:** The surrounding vegetation in the project area is mostly comprised out of mixed grasslands and scattered trees with the occurrence of semi-arid succulents in places. The general visibility at the time of the site inspection (September 2016) was moderate but visibility constrained site identification in more pristine to the south areas where relatively denser surface cover occurred.

Even though it might be assumed that survey findings are representative of the heritage landscape of the project area, it should be stated that the possibility exists that individual sites could be missed due to the localised nature of some heritage remains as well as the possible presence of sub-surface archaeology. Therefore, maintaining due cognisance of the integrity and accuracy of the archaeological survey, it should be stated that the heritage resources identified during the study do not necessarily represent all the heritage resources present in the project area. The subterranean nature of some archaeological sites, dense vegetation cover and visibility constraints sometimes distort heritage representations and any additional heritage resources located during consequent development phases must be reported to the Heritage Resources Authority or an archaeological specialist.

### 3.3 Impact Assessment

For consistency among specialists, impact assessment ratings by Exigo Specialist are generally done using the Plomp<sup>1</sup> impact assessment matrix scale supplied by AGES. According to this matrix scale, each heritage receptor in the study area is given an impact assessment. A cumulative assessment for the proposed project is also included.

---

<sup>1</sup> Plomp, H.,2004



## 4 ARCHAEO-HISTORICAL CONTEXT

### 4.1 The archaeology of Southern Africa

Archaeology in southern Africa is typically divided into two main fields of study, the **Stone Age** and the **Iron Age** or **Farmer Period**. The following table provides a concise outline of the chronological sequence of periods, events, cultural groups and material expressions in Southern African pre-history and history.

**Table 1 Chronological Periods across southern Africa**

Period	Epoch	Associated cultural groups	Typical Material Expressions
Early Stone Age 2.5m – 250 000 YCE	Pleistocene	Early Hominins: <i>Australopithecines</i> <i>Homo habilis</i> <i>Homo erectus</i>	Typically large stone tools such as hand axes, choppers and cleavers.
Middle Stone Age 250 000 – 25 000 YCE	Pleistocene	First <i>Homo sapiens</i> species	Typically smaller stone tools such as scrapers, blades and points.
Late Stone Age 20 000 BC – present	Pleistocene / Holocene	<i>Homo sapiens sapiens</i> including San people	Typically small to minute stone tools such as arrow heads, points and bladelets.
Early Iron Age / Early Farmer Period 300 – 900 AD	Holocene	First Bantu-speaking groups	Typically distinct ceramics, bead ware, iron objects, grinding stones.
Middle Iron Age (Mapungubwe / K2) / early Later Farmer Period 900 – 1350 AD	Holocene	Bantu-speaking groups, ancestors of present-day groups	Typically distinct ceramics, bead ware and iron / gold / copper objects, trade goods and grinding stones.
Late Iron Age / Later Farmer Period 1400 AD -1850 AD	Holocene	Various Bantu-speaking groups including Venda, Thonga, Sotho-Tswana and Zulu	Distinct ceramics, grinding stones, iron objects, trade objects, remains of iron smelting activities including iron smelting furnace, iron slag and residue as well as iron ore.
Historical / Colonial Period ±1850 AD – present	Holocene	Various Bantu-speaking groups as well as European farmers, settlers and explorers	Remains of historical structures e.g. homesteads, missionary schools etc. as well as, glass, porcelain, metal and ceramics.

#### 4.1.1 The Stone Ages

##### - The Earlier Stone Age (ESA)

The Earlier Stone Age from between 1.5 million and 250 000 years ago refers to the earliest that *Homo sapiens sapiens* predecessors began making stone tools. The earliest stone tool industry was referred to as the Olduvai Industry originating from stone artefacts recorded at Olduvai Gorge, Tanzania. The Acheulian Industry, the predominant southern African Early Stone Age Industry, replaced the Olduvai Industry approximately 1.5 million years ago, is attested to in diverse environments and over wide geographical areas. The hallmark of the Acheulian Industry is its large cutting tools (LCTs or bifaces), primarily handaxes and cleavers. Bifaces emerged in East Africa more than 1.5 million years ago but have been reported from a wide range of areas, from South Africa to northern Europe and from India to the Iberian coast. Earlier Stone Age deposits typically occur on the flood-plains of perennial rivers. These ESA open sites sometimes contain stone tool scatters and manufacturing debris ranging from pebble tool choppers to core tools such as handaxes and cleavers. These groups seldom actively hunted and relied heavily on the opportunistic scavenging of meat from carnivore kill sites. The most well-known Early Stone Age site in southern Africa is

Amanzi Springs, situated about 10km north-east of Uitenhage, near Port Elizabeth (Deacon 1970). In a series of spring deposits a large number of stone tools were found in situ to a depth of 3-4m. Wood and seed material preserved remarkably very well within the spring deposits, and possibly date to between 800 000 to 250 000 years old.

#### - **The Middle Stone Age (MSA)**

The Middle Stone Age (MSA) spans a period from 250 000-30 000 years ago and focuses on the emergence of modern humans through the change in technology, behaviour, physical appearance, art and symbolism. Various stone artefact industries occur during this time period, although less is known about the time prior to 120 000 years ago, extensive systemic archaeological research is being conducted on sites across southern Africa dating within the last 120 000 years (Thompson & Marean 2008). The large handaxes and cleavers were replaced by smaller stone artefacts called the MSA flake and blade industries. Surface scatters of these flake and blade industries occur widespread across southern Africa although rarely with any associated botanical and faunal remains. It is also common for these stone artefacts to be found between the surface and approximately 50-80cm below ground. Fossil bone may in rare cases be associated with MSA occurrences (Gess 1969). These stone artefacts, like the Earlier Stone Age handaxes are usually observed in secondary context with no other associated archaeological material. The MSA is distinguished from the ESA by the smaller-sized and distinctly different stone artefacts and chaîne opératoire (method) used in manufacture, the introduction of other types of artefacts and evidence of symbolic behaviour. The prepared core technique was used for the manufacture of the stone artefacts which display a characteristic faceted striking platform and includes mainly unifacial and bifacial flake blades and points. The Howiesons Poort Industry (80 000-55 000 years ago) is distinguished from the other MSA stone artefacts: the size of tools are generally smaller, the range of raw materials include finer-grained rocks such as silcrete, chalcedony, chert and hornfels, and include segments, backed blades and trapezoids in the stone toolkit which were sometimes hafted (set or glued) onto handles. In addition to stone artefacts, bone was worked into points, possibly hafted, and used as tools for hunting (Deacon & Deacon 1999). Other types of artefacts that have been encountered in archaeological excavations include tick shell beads, the rim pieces of ostrich eggshell (OES) water flasks, ochre-stained pieces of ostrich eggshell and engraved and scratched ochre pieces, as well as the collection of materials for purely aesthetic reasons. The majority of MSA sites occur on flood plains and sometimes in caves and rock shelters. Sites usually consist of large concentrations of knapped stone flakes such as scrapers, points and blades and associated manufacturing debris. Tools may have been hafted but organic materials, such as those used in hafting, seldom remain preserved in the archaeological record. Limited drive-hunting activities are associated with the MSA.

#### - **The Later Stone Age (LSA)**

The Later Stone Age (LSA) spans the period from about 20 000 years ago until the colonial era, although some communities continue making stone tools today. The period between 30 000 and 20 000 years ago is referred to as the transition from the MSA to LSA; although there is a lack of crucial sites and evidence that represent this change. By the time of the Later Stone Age the genus *Homo*, in southern Africa, had developed into *Homo sapiens sapiens*, and in Europe, had already replaced *Homo neanderthalensis*. The LSA is marked by a series of technological innovations, new tools and artefacts, the development of economic, political and social systems, and core symbolic beliefs and rituals. The stone toolkits changed over time according to time-specific needs and raw material availability, from smaller microlithic Robberg, Wilton Industries and in between, the larger Albany/Oakhurst and the Kabeljous Industries. Bored stones used as part of digging sticks, grooved stones for sharpening and grinding and stone tools fixed to handles with mastic also become more common. Fishing equipment such as hooks, gorges and sinkers also appear within archaeological excavations. Polished bone tools such as eyed needles, awls, linkshafts and arrowheads also become a more common occurrence. Most importantly bows and arrows revolutionized the hunting economy. It was only within the last 2000

years that earthenware pottery was introduced, before then tortoiseshell bowls were used for cooking and ostrich eggshell (OES) flasks were used for storing water. Decorative items like ostrich eggshell and marine/fresh water shell beads and pendants were made. Hunting and gathering made up the economic way of life of these communities; therefore, they are normally referred to as hunter-gatherers. Hunter-gatherers hunted both small and large game and gathered edible plant foods from the veld. For those that lived at or close the coast, marine shellfish and seals and other edible marine resources were available for the gathering. The political system was mainly egalitarian, and socially, hunter-gatherers lived in bands of up to twenty people during the scarce resource availability dispersal seasons and aggregated according to kinship relations during the abundant resource availability seasons. Symbolic beliefs and rituals are evidenced by the deliberate burial of the dead and in the rock art paintings and engravings scattered across the southern African landscape. Sites dating to the LSA are better preserved in rock shelters, although open sites with scatters of mainly stone tools can occur. Well-protected deposits in shelters allow for stable conditions that result in the preservation of organic materials such as wood, bone, hearths, ostrich eggshell beads and even bedding material. By using San (Bushman) ethnographic data a better understanding of this period is possible. South African rock art is also associated with the LSA.

#### **4.1.2 The Iron Age Farmer Period**

##### **- Early Iron Age (Early Farming Communities)**

The Early Iron Age (also Early Farmer Period) marks the movement of Bantu speaking farming communities into South Africa at around 200 A.D. These groups were agro-pastoralists that settled in the vicinity of water in order to provide subsistence for their cattle and crops. Artefact evidence from Early Farmer Period sites is mostly found in the form of ceramic assemblages and the origins and archaeological identities of this period are largely based upon ceramic typologies and sequences, where diagnostic pottery assemblages can be used to infer group identities and to trace movements across the landscape. Early Farmer Period ceramic traditions are classified by some scholars into different “streams” or trends in pot types and decoration that, over time emerged in southern Africa. These “streams” are identified as the Kwale Branch (east), the Nkope Branch (central) and the Kalundu Branch (west). More specifically, in the northern regions of South Africa at least three settlement phases have been distinguished for prehistoric Bantu-speaking agropastoralists. The first phase of the Early Iron Age, known as Happy Rest (named after the site where the ceramics were first identified), is representative of the Western Stream of migrations, and dates to AD 400 - AD 600. The second phase of Diamant is dated to AD 600 - AD 900 and was first recognized at the eponymous site of Diamant in the western Waterberg. The third phase, characterised by herringbone-decorated pottery of the Eiland tradition, is regarded as the final expression of the Early Iron Age (EIA) and occurs over large parts of the North West Province, Northern Province, Gauteng and Mpumalanga. This phase has been dated to about AD 900 - AD 1200. Early Farmer Period ceramics typically display features such as large and prominent inverted rims, large neck areas and fine elaborate decorations. The Early Iron Age continued up to the end of the first millennium AD.

##### **- Middle Iron Age / K2 Mapungubwe Period (early Later Farming Communities)**

The onset of the middle Iron Age dates back to ±900 AD, a period more commonly known as the Mapungubwe / K2 phase. These names refer to the well-known archaeological sites that are today the pinnacle of South Africa’s Iron Age heritage. The inhabitants of K2 and Mapungubwe, situated on the banks of the Limpopo, were agriculturalists and pastoralists and were engaged in extensive trade activities with local and foreign traders. Although the identity of this Bantu-speaking group remains a point of contestation, the Mapungubwe people were the first state-organized society southern Africa has known. A considerable amount of golden objects, ivory, beads (glass and gold), trade goods and clay figurines as well as large amounts of potsherds were found at these sites and also appear in sites dating back to this phase of the Iron Age. Ceramics of this tradition take the form of beakers with upright sides and decorations around the base (K2) and shallow-shouldered bowls with decorations as well as globular pots with long

necks. (Mapungubwe). The site of Mapungubwe was deserted at around 1250 AD and this also marks the relative conclusion of this phase of the Iron Age.

- **Later Iron Age (Later Farming Communities)**

The late Iron Age of southern Africa marks the grouping of Bantu speaking groups into different cultural units. It also signals one of the most influential events of the second millennium AD in southern Africa, the difaqane. The difaqane (also known as “the scattering”) brought about a dramatic and sudden ending to centuries of stable society in southern Africa. Reasons for this change was essentially the first penetration of the southern African interior by Portuguese traders, military conquests by various Bantu speaking groups primarily the ambitious Zulu King Shaka and the beginning of industrial developments in South Africa. Different cultural groups were scattered over large areas of the interior. These groups conveyed with them their customs that in the archaeological record manifest in ceramics, beads and other artefacts. This means that distinct pottery typologies can be found in the different late Iron Age groups of South Africa.

- **Bantu Speaking Groups in the South African interior**

*It should be noted that terms such as “Nguni”, “Sotho”, “Venda” and others refer to broad and comprehensive language groups that demonstrated similarities in their origins and language. It does not imply that these Nguni / Sotho groups were homogeneous and static; they rather moved through the landscape and influenced each other in continuous processes marked by cultural fluidity.*

Ethnographers generally divide major Bantu-speaking groups of southern Africa into two broad linguistic groups, the Nguni and the Sotho with smaller subdivisions under these two main groups. Nguni groups were found in the eastern parts of the interior of South Africa and can be divided into the northern Nguni and the southern Nguni. The various Zulu and Swazi groups were generally associated with the northern Nguni whereas the southern Nguni comprised the Xhosa, Mpondo, Thembu and Mpondomise groups. The same geographically based divisions exist among Sotho groups where, under the western Sotho (or Tswana), groups such as the Rolong, Hurutshe, Kwena, Fokeng and Kgatla are found. The northern Sotho included the Pedi and amalgamation of smaller groups united to become the southern Sotho group or the Basutho. Other smaller language groups such as the Venda, Lemba and Tshonga Shangana transpired outside these major entities but as time progressed they were, however to lesser or greater extent influenced and absorbed by neighbouring groups.

#### **4.1.3 Pastoralism and the last 2000 years**

Until 2000 years ago, hunter-gatherer communities traded, exchanged goods, encountered and interacted with other hunter-gatherer communities. From about 2000 years ago the social dynamics of the southern African landscape started changing with the immigration of two 'other' groups of people, different in physique, political, economic and social systems, beliefs and rituals. One of these groups, the Khoekhoe pastoralists or herders entered southern Africa with domestic animals, namely fat-tailed sheep and goats, travelling through the south towards the coast. They also introduced thin-walled pottery common in the interior and along the coastal regions of southern Africa. Their economic systems were directed by the accumulation of wealth in domestic stock numbers and their political make-up was more hierarchical than that of the hunter-gatherers.

#### **4.1.4 Historical and Colonial Times and Recent History**

The Historical period in southern Africa encompass the course of Europe's discovery of South Africa and the spreading of European settlements along the East Coast and subsequently into the interior. In addition, the formation stages of this period are marked by the large scale movements of various Bantu-speaking groups in the interior of South Africa, which profoundly influenced the course of European settlement. Finally, the final retreat of the San and Khoekhoen groups into their present-day living areas also occurred

in the Historical period in southern Africa.

## **4.2 Discussion: Greater Tshwane Heritage**

The cultural landscape of the Gauteng area encompasses a period of time that spans millions of years, covering human cultural development from the Stone Ages up to recent times. It depicts the interaction between the first humans and their adaptation and utilization to the environment, the migration of people, technological advances, warfare and contact and conflict. Contained in its archaeology are traces of conquests by Bantu-speakers, Europeans and British imperialism encompassing the struggle for land, resources and political power.

### **4.2.1 The Early and Middle Stone Ages**

The Highveld areas of Gauteng were inhabited by humans since the Earlier Stone Age (ESA) times and stone tools dating to this period, typically found in the vicinity of watercourses, are abundantly scattered in the landscape. Archaeologists have found some of the first formal stone tools in the world in the Pretoria area. Earlier Stone Age people (probably *Homo ergaster*) used the quartzite ridge above the zoo as a quarry for the manufacture of tools such as handaxes and cleavers (see pre-history of Southern Africa). Excavations for the Zambezi Drive toll gate at the east end of the ridge uncovered the same kinds of ancient artefacts. The artefacts in the quarry and activity area could be as much as a million years old. A significant ESA site has been documented on the farm Kaalfontein (366JR) near the Willem Prinsloo Agricultural Museum where an Earlier Stone Age habitation site occurs about 1m sub-surface. The site yielded some of the oldest and largest Stone Age implements found in South Africa. The Middle Stone Age (MSA) marked the occupation of formerly unoccupied areas on the Highveld near water sources and tools belonging to this period mostly occur in the open or in erosion dongas. Later Stone Age (LSA) people displayed advanced technologies and therefore occupied larger and more diverse environments. Most LSA sites are found in association with rock shelters and caves with material found across the Magaliesberg, to the north and east and scattered throughout Pretoria's surroundings.

### **4.2.2 Iron Age / Farmer Period**

The beginnings of the Iron Age (Farmer Period) in Southern Africa are associated with the arrival of a new Bantu speaking population group at around the third century AD. These newcomers introduced a new way of life into areas that were occupied by Later Stone Age hunter-gatherers and Khoekhoe herders. Distinctive features of the Iron Age are a settled village life, food production (agriculture and animal husbandry), metallurgy (the mining, smelting and working of iron, copper and gold) and the manufacture of pottery. Iron Age people moved into Southern Africa by c. AD 200, entering the area either by moving down the coastal plains, or by using a more central route. From the coast they followed the various rivers inland. Being cultivators, they preferred rich alluvial soils. Iron Age occupation of the larger Highveld area seems to have taken place on a significant scale.

Because of their specific technology and economy, Iron Age people preferred to settle on the alluvial soils near rivers for agricultural purposes and other resources. Remains of Early Iron Age occupation on the Highveld is scarce, with isolated sites occurring in the Magaliesberg, e.g. at Broederstroom. Large scale occupation of the larger Gauteng area by Bantu speaking farming communities occurred only in the second millennium AD. The 16<sup>th</sup> century was marked by a warmer and wetter climate, providing conditions favourable for Later Iron Age (LIA) farmer occupation in areas in the Witwatersrand, the Free State and the Mpumalanga escarpment. This, in turn resulted in increased food production with expanding populations on the central Highveld by the 19<sup>th</sup> century. Due to ever expanding territories and resulting conflict situations these Later Iron Age farmers preferred protective mountain slopes close to areas fit for cattle



grazing. A number of Later Iron Age stone-walled archaeological sites, conventionally associated with Tswana and Ndebele speakers occur around Pretoria.

The Pretoria region was initially occupied by the southern Ndebele people, led by Chief Musi. They inhabited this area about 300 to 400 years ago. The period from 1820 to 1832, known as the Mfecane or Difeqane, was characterized by great strife among the black communities in Southern Africa. This turmoil also changed the patterns of settlement and influenced the ethnic structure of the African population north of the Vaal. The Mfecane began as a result of the movement of several Nguni groups across the Drakensberg from KwaZulu Natal, in order to escape Zulu expansion. Mzilikazi, a general who had fled from King Shaka's army, was the cause of much of the destruction of the smaller tribes in the area across the Vaal. Not long after his arrival, Mzilikazi decimated the Bakwena tribe, who had peacefully occupied the area. He also wiped out the Ba-Hurutsi for hundreds of miles around him. Mzilikazi wielded a path of destruction as far as the Orange River, annihilating all earlier inhabitants of the area. The men from these tribes were killed while the young boys and girls were incorporated into the Matabele fold. Mzilikazi took up all the surrounding tribes as far as the Orange River to the south and Mozambique on the north east, including Bechuanaland. Mzilikazi made Pretoria his home by building two military kraals on the Apies River: "enDinaneni" was situated north-west of Pretoria on the road to Hartebeespoort Dam and "enKungweni" was built along the Daspoort range of hills. His main residence was on the south side of Meintjieskop, but he later moved to the north of the Magaliesberg range, to a place named "emHlahlandlela". However, in 1836 it was reported to Mzilikazi that thousands of White people were moving southwards to invade his land. Feeling threatened, Mzilikazi launched a devastating attack on the Voortrekkers, led by General Hendrik Potgieter. The Voortrekkers managed to ward off their attackers after suffering great loss of life and livestock. Shortly after this, Mzilikazi launched a second attack on the Voortrekkers, and this time his men carried off all the livestock owned by the Whites. Potgieter, determined to succeed, launched a counter-attack on the Matabele at Mosega and managed to recover a considerable number of their livestock. In December 1837, Potgieter launched another attack on Mzilikazi and his tribe. This battle, together with the one waged by Dingane a few months earlier, was enough to send Mzilikazi fleeing across the Limpopo. With Mzilikazi out of the way, it was easy for Potgieter to drive the rest of the Matabele stragglers to the north over Silkaatsnek.

Although some Tswana tribes returned to the Apies River area after the departure of the Ndebele, there is no evidence of large communities occupying the area that is now the Pretoria municipality. The first White inhabitants to settle in Pretoria, in 1840, were the brothers Lucas and Gert Bronkhorst, who registered the farms "Groenkloof" and "Elandspoort." Groenkloof encompassed the Fountains Valley area, while Elandspoort extended from the south to Daspoortrand in the north and from Pretoria west through to Hatfield in the east. Later, a trek led by Andries Pretorius from Ohrigstad, together with a few stragglers from Natal and the OFS, also settled in the area. It was through the efforts of Pretorius that the British recognized the independence of the Voortrekkers north of the Vaal, an area that became known as the Transvaal. This resulted in the signing of the Sand River Convention in 1852. In 1853, the son of Andries Pretorius, Marthinus Wessels Pretorius, purchased two farms, Elandspoort and Koedoespoort, with the intention of founding a town that would be the centre of the new state. On November 1853, the two farms were declared a town, which came to be known as Pretoria.

Some 100 years earlier, African farmers in the Fokeng cluster built stonewalled settlements in the Tshwane area that emphasised the centre/side axis. From the air, these earlier settlements resemble a 'fried egg'; that is, a smooth outer ring about 60 metres across enclosed in a central cattle byre about 20 metres in diameter. This type has its origins among BaFokeng living near the hill Ntsuanatsatsi in the Free State (see pre history of Bloemfontein). When these early BaFokeng people moved north across the Vaal River, they

met the ancestors of Southwest Sotho-Tswana, such as BaRolong and BaThlaping. Their interaction helped to create a new type of stonewalling called Klipriviersburg. Besides Johannesburg, Klipriviersburg walling is also found around Pretoria. All of these people were mixed farmers; that is, they herded cattle as well as sheep and goats, and they cultivated sorghums, millets and various beans and peas. They were also capable of making metal tools and jewellery.

The earliest evidence of metal working in the region comes from the site Broederstroom west of Pretoria. Archaeologists have uncovered the remains of at least two stratified villages there that date back to between AD 550 and 700, each with evidence of iron forging. Two major technological steps characterise ancient iron production: smelting and forging. Technically, iron ore is reduced in a furnace to create a bloom. During this smelting process, silica in the host rock melts, flowing off as slag leaving the bloom behind. The bloom has to be forged in an oxidised atmosphere, usually in an open hearth. In both smelting and forging, bellows attached to clay pipes help the operators reach the necessary high temperatures. Culturally, Bantu-speaking people in the recent past compared the smelting process to childbirth, a private and sacred affair. Consequently, the smelter was usually secluded outside the settlement. Forging, in contrast, was comparable to raising the child; and so the forge was located in a public area in the centre of the homestead. The forges at Broederstroom follow this pattern.

#### 4.2.3 Later History: Colonial Period and Living Heritage

Pretoria was founded in 1855 by Marthinus Pretorius, leader of the Voortrekkers, who named it after his father Andries Pretorius. The elder Pretorius had become a national hero of the Voortrekkers after his victory over the Zulus in the Battle of Blood River. It became the capital of the South African Republic (ZAR) on 1 May 1860. The founding of Pretoria as the capital of the South African Republic can be seen as marking the end of the Boers' settlement movements of the Great Trek. For centuries the area east of Pretoria proved to be ideal farmland because of its water richness and the first white settlers trekked into this area during the early part of the 19th century. The Bronkhorst family were the first owners of the farms in the district where Pretoria would later be founded. Lucas Cornelius Bronkhorst (1795-1875) joined the Potgieter migration during the Great Trek with his family and his brother, Johannes Gerhardus Stephanus Bronkhorst (1798-1848). Before the British annexed Natal in 1842, they moved back over the Drakensberg Mountains and settled in the region of the Apies River. Lucas then established the farm 'Groenkloof' in 1841 which had a rich water supply. The two brothers also established the farm 'Elandsfontein' in 1842, where the first hartbees houses (reed huts) were built.

Two years after Field Cornet Andries P.J. van der Walt (1814-1861) settled on the left bank of the Apies River after the battle of Boomplaats (1848), Andries Wilhelmus Jacobus Pretorius (1798-1853) established a farm next to the Magaliesberg Mountain. New settlers accompanied him from the Free State, Natal and Ohrigstad, like the Smit, Fourie, Minnaar, Vermeulen, Van Rensburg, Pretorius and Prinsloo families. They lived next to the Apies Rivier on the farms 'Koedoespoort', 'Elandspoort' and 'Daspoort'.

#### 4.2.4 Later History: Erasmuskloof and the Erasmus Legacy

The history of Pretoria-East is closely related to the Erasmus family. At around 1900 Carl Jacobus Erasmus and Albert Brodrick were the joint owners of the farm Waterkloof. In 1903, a portion of the farm was transferred to Jochemus Johannes Petrus Erasmus, born in Pretoria on 30 Augustus 1863, as inheritance from his father, Carl. Jochemus built the famed Erasmus Castle in 1903 and he lived here with his wife Johanna Jacoba Erasmus. In 1960, a large portion of the farm Waterkloof was left to Jochemus' son, Jochemus Rasmus (Emus) Erasmus as inheritance. However, the farm was expropriated by the Transvaal Labour Department who wanted to build an academic hospital in the area, and Emus lost all ownership of

the farm in in 1977. An interesting fact about the farm Waterkloof 378JR is that the property was one of the first to be survey by Johan Friedrich Bernhard Rissik, surveyor general of the Zuid-Afrikaansche Republiek, in the 1890's. For these properties, he used his initials "JR" in farm names and the nomenclature remains to this day.



Figure 4-1: A map of the Transvaal at the turn of the 19<sup>th</sup> century.



Figure 4-2: The well-known Erasmus Castle shortly after completion in 1903.



#### 4.2.5 Burial Sites / Human Remains

Human remains and burials are commonly found close to archaeological sites; they may be found in "lost" graveyards, or occur sporadically anywhere as a result of prehistoric activity, victims of conflict or crime. It is often difficult to detect the presence of archaeological human remains on the landscape as these burials, in most cases, are not marked at the surface. Human remains are usually observed when they are exposed through erosion. In some instances packed stones or rocks may indicate the presence of informal pre-colonial burials. If any human bones are found during the course of construction work then they should be reported to an archaeologist and work in the immediate vicinity should cease until the appropriate actions have been carried out by the archaeologist. Where human remains are part of a burial they would need to be exhumed under a permit from either SAHRA (for pre-colonial burials as well as burials later than about AD 1500).

## 5 RESULTS: ARCHAEOLOGICAL SURVEY

---

In terms of heritage resources, the landscape around the project area is primarily well known for Historical Period occurrences but the study area has generally been transformed by recent and historical activities largely sterilising the area of heritage remains. However, certain parts of the project area remain pristine and occurrences of heritage potential were noted in the project development footprint. These occurrences were uniquely coded **EXIGO-MDW-HPxx** (Exigo Mixed Development Waterkloof Historical Period xx).

### 5.1 The Stone Age

The site inspection produced no Stone Age material or remains.

### 5.2 The Iron Age Farmer Period

A frontier zone between in the later Iron Age and Colonial times, the Gauteng Province landscape holds scant remnants of precolonial Iron Age Farmer Period remnants. However, the site inspection produced no Iron Age farmer sites.

### 5.3 Historical / Colonial Period

During the Historical Period, Pretoria with its surrounding farming communities played an important role and Historical and Colonial Period dwellings across in the landscape on plots, in suburbs and on farms. Even though the project area is surrounded by residential areas and main highways, and large portion thereof have been transformed or disturbed, Historical Period / Colonial Period remnants were observed in the project area.

- **Site Exigo-MDW-HP01 S25.81846° E28.24296°**
- **Site Exigo-MDW-HP02 S 25.81878° E28.24317°**

The ruined foundations of two brick structures and associated household ash middens occur in a central part of the project area, in close proximity of each other. At the sites, the remains of clay brick foundations and scattered stones and bricks cover a surface area of approximately 10m x 15m. In addition, two ash middens containing material culture such as glass, metal, porcelain and enamel indicate a Historical Period context for the two sites where these structures possibly acted as farm-labourer's quarters. The general preservation of the sites, structures and the integrity of middens are poor due to site disturbances and natural site degradation over time. Dwellings or buildings are not clearly visible on late-20<sup>th</sup> century aerial

photography of the area and it is not indicated on 1:50 000 maps. This supports the interpretation that the sites date to the Historical Period. The foundations are of low heritage significance due to their poor preservation but the middens are of medium significance as probable diagnostic Historical Period artefacts occur in these deposits. The sites occur within proposed project footprint and unmitigated impact on the sites is expected to be direct.

It should be stressed that, since the sites were probably used dwellings, the probability of informal burials occurring in association with the sites is high. In the event of the detection of any unmarked grave, SAHRA should be contacted immediately, so that such a find can be investigated and mitigation measures recommended.

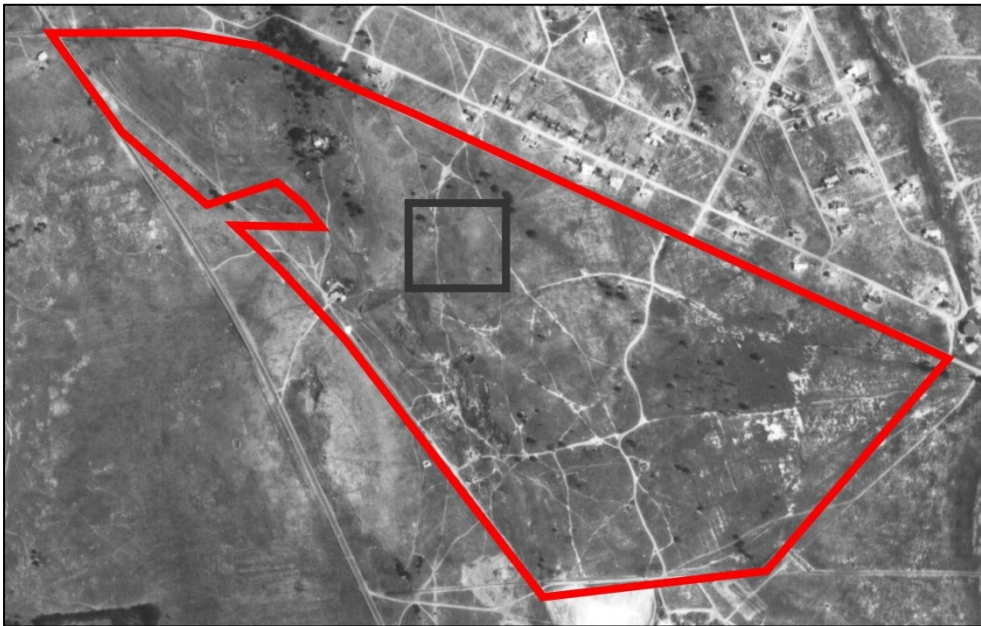


Figure 5-1: A historical aerial photo of the project area (red line) indicating the assumed position of the Historical Period compounds discussed in the text.



Figure 5-2: A brick foundation visible on the surface at Site Exigo MDW-HP01.





Figure 5-3: The remains of a brick wall at Site Exigo MDW-HP01.



Figure 5-4: A large ash midden at Site Exigo MDW-HP01.



Figure 5-5: Metal, porcelain and glass visible in the midden deposit at Site Exigo MDW-HP01.





Figure 5-6: Collapsed walling and brick foundations at Site Exigo MDW-HP02.



Figure 5-7: An ash midden at Site Exigo MDW-HP02.



Figure 5-8: Porcelain and a metal loop from the midden at Site Exigo MDW-HP02.





Figure 5-9: Scattered stones and clay bricks at Site Exigo MDW-HP02.



Figure 5-10: An upright stone of unknown function at Site Exigo MDW-HP02.

#### 5.4 Contemporary Period / Recent Past

A multi-room house occurs towards the west of the study area and west of the M28 (Van Ryneveld Ave) Road. The double storey building is located in an enclosed compound; which includes a second house, gardens and a cattle pen. The property is currently occupied. The building displays modern architectural features and it dates to the Contemporary Period and as such, it is of low heritage significance. The compound occurs outside the project footprint area and no impact on the site is expected. In addition to this site, a clearing located along the northern periphery of the study area is also of more recent temporal context. The clearing, indicated by a circular stone structure and an open sand surface, is probably used as a religious meeting place, assumedly by members of the Zionist Christian Church (ZCC). Even though the feature not of heritage significance per se, it might bear intrinsic social value to local residents. The feature occurs within the project footprint area impact on the site is expected.





Figure 5-11: A modern house in the study area.



Figure 5-12: View of a recent period clearing, possibly a religious meeting place in the study area.



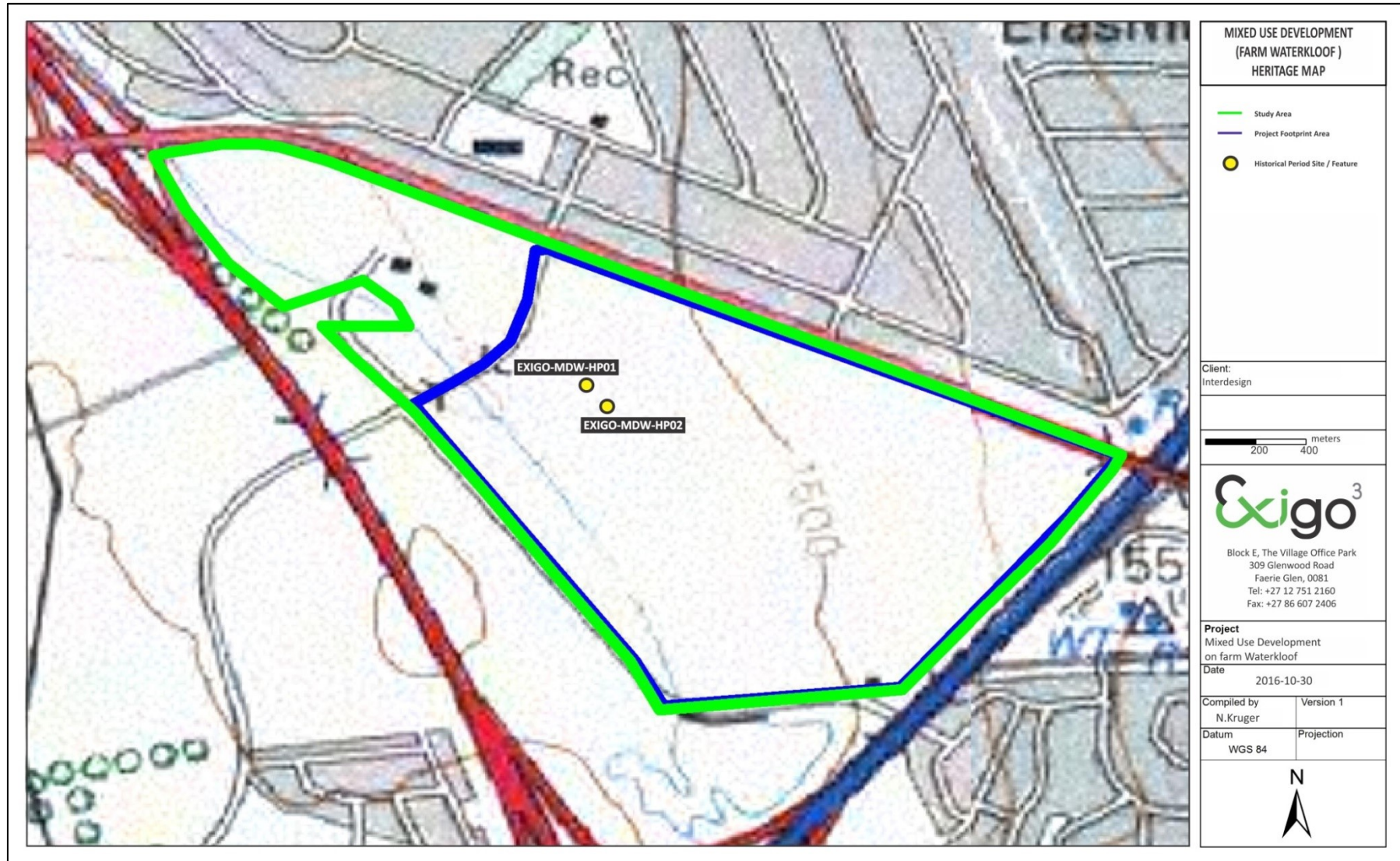


Figure 5-13: Topographical map indicating the locations of all heritage occurrences discussed in the text.





Figure 5-14: Aerial map indicating the locations of all heritage occurrences discussed in the text.

**6 RESULTS: STATEMENT OF SIGNIFICANCE AND IMPACT RATING**

**6.1 Potential Impacts and Significance Ratings<sup>2</sup>**

The following section provides a background to the identification and assessment of possible impacts and alternatives, as well as a range of risk situations and scenarios commonly associated with heritage resources management. A guideline for the rating of impacts and recommendation of management actions for areas of heritage potential within the study area is supplied in Addendum B.

**6.1.1 General assessment of impacts on resources**

Generally, the value and significance of archaeological and other heritage sites might be impacted on by any activity that would result immediately or in the future in the destruction, damage, excavation, alteration, removal or collection from its original position, any archaeological material or object (as indicated in the National Heritage Resources Act (No 25 of 1999)). Thus, the destructive impacts that are possible in terms of heritage resources would tend to be direct, once-off events occurring during the initial construction period. However, in the long run, the proximity of operations in any given area could result in secondary indirect impacts. The EIA process therefore specifies impact assessment criteria which can be utilised from the perspective of a heritage specialist study which elucidates the overall extent of impacts.

**6.1.2 Direct impact rating**

**Direct or primary effects** on heritage resources occur at the same time and in the same space as the activity, e.g. loss of historical fabric through demolition work. **Indirect effects or secondary effects** on heritage resources occur later in time or at a different place from the causal activity, or as a result of a complex pathway, e.g. restriction of access to a heritage resource resulting in the gradual erosion of its significance, which is dependent on ritual patterns of access (refer to Section 10.3 in the Addendum for an outline of the relationship between the significance of a heritage context, the intensity of development and the significance of heritage impacts to be expected). Heritage receptors were found in the project zones and potential impacts to heritage resources is foreseen.

The following table summarizes impacts to the **medium** significance Historical Period middens within the proposed project area (**Site EXIGO-MDW-HP01, Site EXIGO-MDW-HP02**):

<b>NATURE OF IMPACT:</b> Impacts could involve displacement or destruction of heritage structures or features in the proposed project area.		
	<b>Without mitigation</b>	<b>With mitigation</b>
<b>EXTENT</b>	Local	Local
<b>DURATION</b>	Permanent	Permanent
<b>MAGNITUDE</b>	Minor	Minor
<b>PROBABILITY</b>	Probable	Negligible
<b>SIGNIFICANCE</b>	Medium	Low
<b>STATUS</b>	Negative	Neutral
<b>REVERSIBILITY</b>	Non-reversible	Non-reversible

<sup>2</sup> Based on: Winter, S. & Baumann, N. 2005. *Guideline for involving heritage specialists in EIA processes: Edition 1.*



<b>IRREPLACEABLE LOSS OF RESOURCES?</b>	Yes	No
<b>CAN IMPACTS BE MITIGATED?</b>	N.A	
<b>MITIGATION:</b> Site monitoring by ECO, Phase 2 assessment, destruction permit when required.		
<b>CUMULATIVE IMPACTS:</b> No cumulative impact is anticipated.		
<b>RESIDUAL IMPACTS:</b> n/a		

**6.2 Evaluation Impacts**

Previous studies conducted in the larger Pretoria area suggest a rich and diverse archaeological landscape. However, the proposed project area situated in expanding urban and peri-urban zones which have seen long-term human impact. As such, these areas have largely been sterilised of potential heritage resources, especially those dating to pre-Colonial and prehistoric times. Cognisance should nonetheless be taken of archaeological material that might be present in surface and sub-surface deposits.

**6.2.1 Archaeology**

The poorly preserved remains of Historical Period dwellings in the form of foundations, and associated middens occur in the proposed project area. The foundation structures are of low heritage significance due to their poor preservation but middens are of medium significance as these features might inform on social and settlement developments in the landscape. The potential impact on the resources is considered to be MODERATE but this impact rating can be limited to a NEGLIBLE impact by the implementation of mitigation measures (site monitoring, Phase 2 assessment, destruction permitting) for the sites, if / when required.

**6.2.2 Built Environment**

The project area is situated in the greater Pretoria where a large number of Historical Period buildings and features, monuments and heritage sites are to be found. A modern house occurs in the project area but this structure is of no heritage value. Formal housing complexes and suburbs, the Waterloof Airforce base and National roads occur around the site. As such, the project area has no significance in terms of the built environment as significant Historical Buildings or structures of heritage significance are absent from the site.

**6.2.3 Cultural Landscape**

Even though the larger Pretoria area comprises a rich cultural landscape, the landscape surrounding the proposed project area has been transformed by urbanization and human settlement. Further away from the project area, the landscape is typical of central Gauteng with large flat parcels with occasional undulating hills and flatter plains in-between. This landscape has been transformed by urbanization and the proposed project is unlikely to result in a significant impact on the cultural landscape. A religious meeting place in the project area might have social meaning to local residents and church groups.

**6.2.4 Graves / Human Burials Sites**

In the rural areas of the Gauteng Province graves and cemeteries often occur around farmsteads in family burial grounds but they are also randomly scattered around archaeological and historical settlements. The probability of informal human burials encountered during development should thus not be excluded. In addition, human remains and burials are commonly found close to archaeological sites; they may be found in "lost" graveyards, or occur sporadically anywhere as a result of prehistoric activity, victims of conflict or crime. It is often difficult to detect the presence of archaeological human remains on the landscape as

these burials, in most cases, are not marked at the surface. Human remains are usually observed when they are exposed through erosion. In some instances packed stones or rocks may indicate the presence of informal pre-colonial burials. If any human bones are found during the course of construction work then they should be reported to an archaeologist and work in the immediate vicinity should cease until the appropriate actions have been carried out by the archaeologist. Where human remains are part of a burial they would need to be exhumed under a permit from either SAHRA (for pre-colonial burials as well as burials later than about AD 1500). Should any unmarked human burials/remains be found during the course of construction, work in the immediate vicinity should cease and the find must immediately be reported to the archaeologist, or the South African Heritage Resources Agency (SAHRA). Under no circumstances may burials be disturbed or removed until such time as necessary statutory procedures required for grave relocation have been met

***Sensitive heritage resources occur inside areas proposed for the proposed Mixed Use Development on the farm Waterkloof 378JR and the mitigation and management of these resources are required for the duration of the development. In the opinion of the author of this Archaeological Impact Assessment Report, the proposed project may proceed from a culture resources management perspective, provided that mitigation measures, endorsed by the relevant Heritage Resources authority, are implemented where applicable, and provided that no subsurface heritage remains are encountered during construction.***

**6.3 Management actions**

Recommendations for relevant heritage resources management actions are vital to the conservation of heritage resources. A general guideline for recommended management actions is included in Section 10.4 of the Addendum. The following management measures would be required during implementation of the proposed Mixed Use Development on Farm Waterkloof.

**OBJECTIVE:** prevent unnecessary disturbance and/or destruction of previously undetected heritage receptors.

*For the Historical Period foundations remains and ash middens (Site EXIGO-MDW-HP01, Site EXIGO-MDW-HP02) within the project area the following are required in terms of heritage management and mitigation:*

<b>PROJECT COMPONENT/S</b>	All phases of construction and operation.		
<b>POTENTIAL IMPACT</b>	Damage/destruction of sites.		
<b>ACTIVITY RISK/SOURCE</b>	Digging foundations and trenches into sensitive deposits that are not visible at the surface.		
<b>MITIGATION: TARGET/OBJECTIVE</b>	To locate previously undetected heritage remains / graves as soon as possible after disturbance so as to maximize the chances of successful rescue/mitigation work.		
<b>MITIGATION: ACTION/CONTROL</b>	<b>RESPONSIBILITY</b>	<b>TIMEFRAME</b>	
Fixed Mitigation Procedure ( <b>required</b> )			
<b>Site Monitoring:</b> Regular examination of trenches and excavations in order to detect and preserve previously undocumented heritage receptors.	ECO, HERITAGE ASSESSMENT PRACTITIONER	Monitor as frequently as practically possible.	as as possible.
Preferred Mitigation Procedure			
<b>Avoidance:</b> Implement a heritage conservation buffer of at least 50m around the heritage resource; avoid the	DEVELOPER	Prior to the commencement of	

heritage resource and the proposed conservation buffer.		construction and earth-moving.
<b>Alternative Mitigation Procedure (if preferred mitigation procedure is not feasible)</b>		
<p><b>Middens:</b> Phase 2 Specialist Analysis and documentation of sites (mapping, desktop study), site sampling (if required). Permitting if and when required.</p> <p><b>Foundations:</b> Destruction permitting prior to the destruction of these features.</p>	HERITAGE ASSESSMENT PRACTITIONER	Prior to the commencement of construction and earth-moving.
<b>PERFORMANCE INDICATOR</b>	Archaeological sites are discovered and mitigated with the minimum amount of unnecessary disturbance.	
<b>MONITORING</b>	Successful location of sites by person/s monitoring.	

## 7 RECOMMENDATIONS

The larger landscape in this part of Gauteng is rich in pre-historical and historical remnants; significantly so Colonial sites associated material remains. In terms of heritage resources, the landscape around the project area has been altered extensively by recent and historical activities largely sterilising the area of heritage remains. The following recommendations are made based on general observations in the proposed project Area:

- A Palaeontological Desktop Study should be considered for the development. Should fossil remains such as fossil fish, reptiles or petrified wood be exposed during construction, these objects should carefully safeguarded and the relevant heritage resources authority (SAHRA) should be notified immediately so that the appropriate action can be taken by a professional palaeontologist.
- Two apparent Historical Period sites (**Site EXIGO-MDW-HP01, Site EXIGO-MDW-HP02**) occur within the project area. At these sites, the remains of two poorly preserved building foundation structures occur in association with household middens containing seemingly Historical Period material culture. The foundations are of low significance due to the poor preservation of the structures but the midden deposits might potentially inform on local settlement and social developments on the historical Waterkloof property and these are rated as of medium significance. It is primarily recommended that the sites be avoided and that a 50m conservation buffer around the structures be implemented. However, should impact on the sites by development prove inevitable, the middens should be adequately documented by means of further Phase 2 Specialist Analysis (mapped, photographed and documented, described and contextualised by means of a desktop study, possible site sampling subject to the necessary excavation permits obtained from SAHRA). If impact on the foundations structures is foreseen, the necessary destruction permits should be obtained from the relevant Heritage Resources Authorities (G-PHRA) prior to the destruction of these features.
- A religious meeting place, possibly associated with the ZCC, occurs within the project area but the site is of low heritage significance due a more recent temporal context thereof. However, it is recommended that the site and any activities in its surrounds be monitored in order to avoid the destruction of previously undetected heritage remains. It is suggested that local communities be consulted with regards to religious meeting places in the project area and their possible social meanings. This could form part of the Social impact Assessment (SIA) for the project.



- A careful watching brief monitoring process is recommended whereby an informed ECO inspect the construction sites on regular basis in order to monitor possible impact on heritage resources. Should any subsurface paleontological, archaeological or historical material or heritage resources be exposed during construction activities, all activities should be suspended and the archaeological specialist should be notified immediately. It is essential that cognisance be taken of the larger archaeological landscape of the area in order to avoid the destruction of previously undetected heritage sites. Should any subsurface paleontological / archaeological / historical material and /or graves/human remains be uncovered, all activities should be suspended and the archaeological specialist should be alerted immediately. It should be noted that mitigation measures are valid for the duration of the development process, and mitigation measures might have to be implemented on additional features of heritage importance not detected during this Phase 1 assessment (e.g. uncovered during the construction process).

In addition to these site-specific recommendations, careful cognisance should be taken of the following:

- As Palaeontological remains occur where bedrock has been exposed, all geological features should be regarded as sensitive.
- Water sources such as drainage lines, fountains and pans would often have attracted human activity in the past. As Stone Age material the larger landscape should be regarded as potentially sensitive in terms of possible subsurface deposits.

## 8 GENERAL COMMENTS AND CONDITIONS

---

This HIA report serves to confirm the extent and significance of the heritage landscape of the proposed Mixed Use Development on the Farm Waterkloof. The larger heritage horizon encompasses rich and diverse archaeological landscapes and cognisance should be taken of heritage resources and archaeological material that might be present in surface and sub-surface deposits. If, during construction, any possible archaeological material culture discoveries are made, the operations must be stopped and a qualified archaeologist be contacted for an assessment of the find. Such material culture might include:

- Formal Earlier Stone Age stone tools.
- Formal Middle Stone Age stone tools.
- Formal Later Stone Age stone tools.
- Potsherds
- Iron objects.
- Beads made from ostrich eggshell and glass.
- Ash middens and cattle dung deposits and accumulations.
- Faunal remains.
- Human remains/graves.
- Stone walling or any sub-surface structures.
- Historical glass, tin or ceramics.
- Fossils.

If such site were to be encountered or impacted by any proposed developments, recommendations contained in this report, as well as endorsement of mitigation measures as set out by NC-PHRA, SAHRA, the National Resources Act and the CRM section of ASAPA will be required.

It must be emphasised that the conclusions and recommendations expressed in this archaeological heritage sensitivity investigation are based on the visibility of archaeological sites/features and may not therefore, represent the area's complete archaeological legacy. Many sites/features may be covered by soil and vegetation and might only be located during sub-surface investigations. If subsurface archaeological deposits, artefacts or skeletal material were to be recovered in the area during construction activities, all activities should be suspended and the archaeological specialist should be notified immediately (**cf. NHRA (Act No. 25 of 1999), Section 36 (6)**).

It must also be clear that Archaeological Specialist Reports will be assessed by the relevant heritage resources authority (Gauteng-PHRA and SAHRA).

## 9 BIBLIOGRAPHY

---

Acocks, J.P.H. 1988. Veld types of South Africa (3rd edition). Memoirs of the Botanical Survey of South Africa 57: 1-146

Aitken, D. W. 1999. The British defence of the Pretoria - Delagoa Bay railway. Military History Journal. Vol 11 No 3/4 - October

Bergh, J.S. 1999. Geskiedenisatlas van Suid-Afrika: die vier noordelike provinsies. Pretoria: J.L. van Schaik.

Breul, H. 1948. The Earlier Stone Age or Old Palaeolithic Industries in the Vaal River Basin. Archaeological Survey. Archaeological Series No. VI:8-18.

Deacon, H.J. 1970. The Acheulian Occupation at Amanzi Springs Uitenhage District, Cape Province. Cape provincial museums at the Albany Museum

Deacon, J. 1996. Archaeology for Planners, Developers and Local Authorities. National Monuments Council. Publication no. P021E.

Deacon, J. 1997. Report: Workshop on Standards for the Assessment of Significance and Research Priorities for Contract Archaeology. In: Newsletter No 49, Sept 1998. Association for Southern African Archaeologists.

Deacon, H.J. & Deacon, J. 1999. Human Beginnings in South Africa. Cape Town: David Philip.

Esterhuysen, A., 2007. The Earlier Stone Age. In Bonner, P., Esterhuysen, A., Jenkins, T. (eds.): A Search for Origins: Science, History and South Africa's 'Cradle of Humankind'. Johannesburg: Wits University Press. Pg 110 -121.

Evers, T.M. 1988. The recognition of Groups in the Iron Age of Southern Africa. PhD thesis. Johannesburg: University of the Witwatersrand.

Gess, W.H.R. 1969. Excavations of a Pleistocene bone deposit at Aloes near Port Elizabeth. South African Archaeological Bulletin 24:31-32.

Hall, M. 1987. The Changing Past: Farmers, Kings & Traders in Southern Africa 200 – 1860 Cape Town, Johannesburg: David Philip

Hamilton, C. (Ed.) 1995. The Mfecane Aftermath. Johannesburg: Wits U.P.

Herbert, E.W. 1993. Iron, Gender and Power: Rituals of Transformation in African Societies. Bloomington: Indiana University Press.

Huffman, T.N. 2007. Handbook to the Iron Age. Pietermaritzburg: University of Kwazulu-Natal Press



Maggs, T.M.O. 1976. Iron Age Communities of the Southern Highveld. Pietermaritzburg: University of Natal Press.

Mason, R.J. 1962. The Prehistory of the Transvaal. Johannesburg: University of the Witwatersrand Press.

Mason, R.J. 1981. Early Iron Age settlement at Broederstroom 24/73, Transvaal, South Africa. South African Journal of Science 77: 401-416

Mitchell, P. 2002. The Archaeology of Southern Africa. Cambridge Africa Collection. Cambridge: Cambridge University Press.

Raper, P.E. 2004. South African place names. Johannesburg: Jonathan Ball Publishers

Swanepoel, N. et al (Eds.) 2008. Five hundred years rediscovered. Johannesburg: Wits University Press

Thompson, E. & Marean, C. W. 2008. The Mossel Bay lithic variant: 120 years of Middle Stone Age Research from Cape St. Blaize Cave to Pinnacle Point. South Africa Archaeological Society Goodwin Series, Vol. 10: 90-104

Van Vollenhoven, A. & Van Den Bos, J. 1997. 'n Kultuurhulpbronstudie van die Britse blokkhuisstelsel van die Tweede Anglo-Boere-oorlog (1899-1902) in die voormalige Transvaal (ZAR). Pretoria: Raad vir Geesteswetenskaplike Navorsing.

Van Warmelo, N.J. 1935. A Preliminary Survey of the Bantu Tribes of South Africa. Ethnographic Publications No. 5. Pretoria: Government Printer.

*Human Tissue Act and Ordinance 7 of 1925, Government Gazette, Cape Town*

*National Resource Act No.25 of 1999, Government Gazette, Cape Town*

*SAHRA, 2005. Minimum Standards for the Archaeological and the Palaeontological Components of Impact Assessment Reports, Draft version 1.4.*

<http://csg.dla.gov.za/index.html>

Accessed 2015-10-30

[http://www.bronberger.co.za/index.php?option=com\\_content&view=article&id=828:laaste-eienaar-by-spookhuis-begrawe&catid=49:ons-mense&Itemid=74](http://www.bronberger.co.za/index.php?option=com_content&view=article&id=828:laaste-eienaar-by-spookhuis-begrawe&catid=49:ons-mense&Itemid=74)

Accessed 2015-10-30

## 10 ADDENDUM A: HERITAGE LEGISLATION BACKGROUND

---

### 10.1 CRM: Legislation, Conservation and Heritage Management

The broad generic term *Cultural Heritage Resources* refers to any physical and spiritual property associated with past and present human use or occupation of the environment, cultural activities and history. The term includes sites, structures, places, natural features and material of palaeontological, archaeological, historical, aesthetic, scientific, architectural, religious, symbolic or traditional importance to specific individuals or groups, traditional systems of cultural practice, belief or social interaction.

#### 10.1.1 Legislation regarding archaeology and heritage sites

The South African Heritage Resources Agency (SAHRA) and their provincial offices aim to conserve and control the management, research, alteration and destruction of cultural resources of South Africa. It is therefore vitally important to adhere to heritage resource legislation at all times.

##### a. National Heritage Resources Act No 25 of 1999, section 35

According to the National Heritage Resources Act of 1999 a historical site is any identifiable building or part thereof, marker, milestone, gravestone, landmark or tell older than 60 years. This clause is commonly known as the "60-years clause". Buildings are amongst the most enduring features of human occupation, and this definition therefore includes all buildings older than 60 years, modern architecture as well as ruins, fortifications and Iron Age settlements. "Tell" refers to the evidence of human existence which is no longer above ground level, such as building foundations and buried remains of settlements (including artefacts).

The Act identifies heritage objects as:

- objects recovered from the soil or waters of South Africa including archaeological and palaeontological objects, meteorites and rare geological specimens
- visual art objects
- military objects
- numismatic objects
- objects of cultural and historical significance
- objects to which oral traditions are attached and which are associated with living heritage
- objects of scientific or technological interest
- any other prescribed category

With regards to activities and work on archaeological and heritage sites this Act states that:

*"No person may alter or demolish any structure or part of a structure which is older than 60 years without a permit by the relevant provincial heritage resources authority." (34. [1] 1999:58)*

and

*"No person may, without a permit issued by the responsible heritage resources authority-*

- (a) *destroy, damage, excavate, alter, deface or otherwise disturb any archaeological or palaeontological site or any meteorite;*
- (b) *destroy, damage, excavate, remove from its original position, collect or own any archaeological or palaeontological material or object or any meteorite;*

- (c) *trade in, sell for private gain, export or attempt to export from the Republic any category of archaeological or palaeontological material or object, or any meteorite; or*
- (d) *bring onto or use at an archaeological or palaeontological site any excavation equipment or any equipment which assist in the detection or recovery of metals or archaeological and palaeontological material or objects, or use such equipment for the recovery of meteorites. (35. [4] 1999:58)."*

and

*"No person may, without a permit issued by SAHRA or a provincial heritage resources agency-*

- (a) *destroy, damage, alter, exhume or remove from its original position or otherwise disturb the grave of a victim of conflict, or any burial ground or part thereof which contains such graves;*
- (b) *destroy, damage, alter, exhume, remove from its original position or otherwise disturb any grave or burial ground older than 60 years which is situated outside a formal cemetery administered by a local authority;*
- (c) *bring onto or use at a burial ground or grave referred to in paragraph (a) or (b) and excavation equipment, or any equipment which assists in the detection or recovery of metals (36. [3] 1999:60)."*

#### **b. Human Tissue Act of 1983 and Ordinance on the Removal of Graves and Dead Bodies of 1925**

Graves 60 years or older are heritage resources and fall under the jurisdiction of both the National Heritage Resources Act and the Human Tissues Act of 1983. However, graves younger than 60 years are specifically protected by the Human Tissues Act (Act 65 of 1983) and the Ordinance on the Removal of Graves and Dead Bodies (Ordinance 7 of 1925) as well as any local and regional provisions, laws and by-laws. Such burial places also fall under the jurisdiction of the National Department of Health and the Provincial Health Departments. Approval for the exhumation and re-burial must be obtained from the relevant Provincial MEC as well as the relevant Local Authorities.

##### **10.1.2 Background to HIA and AIA Studies**

South Africa's unique and non-renewable archaeological and palaeontological heritage sites are 'generally' protected in terms of the National Heritage Resources Act (Act No 25 of 1999, section 35) and may not be disturbed at all without a permit from the relevant heritage resources authority. Heritage sites are frequently threatened by development projects and both the environmental and heritage legislation require impact assessments (HIAs & AIAs) that identify all heritage resources in areas to be developed. Particularly, these assessments are required to make recommendations for protection or mitigation of the impact of the sites. HIAs and AIAs should be done by qualified professionals with adequate knowledge to (a) identify all heritage resources including archaeological and palaeontological sites that might occur in areas of developed and (b) make recommendations for protection or mitigation of the impact on the sites.

The National Heritage Resources Act (Act No. 25 of 1999, section 38) provides guidelines for Cultural Resources Management and prospective developments:

*"38. (1) Subject to the provisions of subsections (7), (8) and (9), any person who intends to undertake a*



*development categorised as:*

- (a) the construction of a road, wall, powerline, pipeline, canal or other similar form of linear development or barrier exceeding 300m in length;*
- (b) the construction of a bridge or similar structure exceeding 50m in length;*
- (c) any development or other activity which will change the character of a site:*
  - (i) exceeding 5 000 m<sup>2</sup> in extent; or*
  - (ii) involving three or more existing erven or subdivisions thereof; or*
  - (iii) involving three or more erven or divisions thereof which have been consolidated within the past five years; or*
  - (iv) the costs of which will exceed a sum set in terms of regulations by SAHRA or a provincial heritage resources authority;*
- (d) the re-zoning of a site exceeding 10 000 m<sup>2</sup> in extent; or*
- (e) any other category of development provided for in regulations by SAHRA or a provincial heritage resources authority,*

*must at the very earliest stages of initiating such a development, notify the responsible heritage resources authority and furnish it with details regarding the location, nature and extent of the proposed development."*

And:

*"The responsible heritage resources authority must specify the information to be provided in a report required in terms of subsection (2)(a): Provided that the following must be included:*

- (a) The identification and mapping of all heritage resources in the area affected;*
- (b) an assessment of the significance of such resources in terms of the heritage assessment criteria set out in section 6(2) or prescribed under section 7;*
- (c) an assessment of the impact of the development on such heritage resources;*
- (d) an evaluation of the impact of the development on heritage resources relative to the sustainable social and economic benefits to be derived from the development;*
- (e) the results of consultation with communities affected by the proposed development and other interested parties regarding the impact of the development on heritage resources;*
- (f) if heritage resources will be adversely affected by the proposed development, the consideration of alternatives; and*
- (g) plans for mitigation of any adverse effects during and after the completion of the proposed development (38. [3] 1999:64)."*

**Consequently, section 35 of the Act requires Heritage Impact Assessments (HIAs) or Archaeological Impact Assessments (AIAs) to be done for such developments in order for all heritage resources, that is, all places or objects of aesthetics, architectural, historic, scientific, social, spiritual, linguistic or technological value or significance to be protected. Thus any assessment should make provision for the**

**protection of all these heritage components, including archaeology, shipwrecks, battlefields, graves, and structures older than 60 years, living heritage, historical settlements, landscapes, geological sites, palaeontological sites and objects. Heritage resources management and conservation**

## 10.2 Assessing the Significance of Heritage Resources

Archaeological sites, as previously defined in the National Heritage Resources Act (Act 25 of 1999) are places in the landscape where people have lived in the past – generally more than 60 years ago – and have left traces of their presence behind. In South Africa, archaeological sites include hominid fossil sites, places where people of the Earlier, Middle and Later Stone Age lived in open sites, river gravels, rock shelters and caves, Iron Age sites, graves, and a variety of historical sites and structures in rural areas, towns and cities. Palaeontological sites are those with fossil remains of plants and animals where people were not involved in the accumulation of the deposits. The basic principle of cultural heritage conservation is that archaeological and other heritage sites are valuable, scarce and *non-renewable*. Many such sites are unfortunately lost on a daily basis through development for housing, roads and infrastructure and once archaeological sites are damaged, they cannot be re-created as site integrity and authenticity is permanently lost. Archaeological sites have the potential to contribute to our understanding of the history of the region and of our country and continent. By preserving links with our past, we may not be able to revive lost cultural traditions, but it enables us to appreciate the role they have played in the history of our country.

### - Categories of significance

Rating the significance of archaeological sites, and consequently grading the potential impact on the resources is linked to the significance of the site itself. The significance of an archaeological site is based on the amount of deposit, the integrity of the context, the kind of deposit and the potential to help answer present research questions. Historical structures are defined by Section 34 of the National Heritage Resources Act, 1999, while other historical and cultural significant sites, places and features, are generally determined by community preferences. The guidelines as provided by the NHRA (Act No. 25 of 1999) in Section 3, with special reference to subsection 3 are used when determining the cultural significance or other special value of archaeological or historical sites. In addition, ICOMOS (the Australian Committee of the International Council on Monuments and Sites) highlights four cultural attributes, which are valuable to any given culture:

#### - *Aesthetic value:*

Aesthetic value includes aspects of sensory perception for which criteria can and should be stated. Such criteria include consideration of the form, scale, colour, texture and material of the fabric, the general atmosphere associated with the place and its uses and also the aesthetic values commonly assessed in the analysis of landscapes and townscape.

#### - *Historic value:*

Historic value encompasses the history of aesthetics, science and society and therefore to a large extent underlies all of the attributes discussed here. Usually a place has historical value because of some kind of influence by an event, person, phase or activity.

#### - *Scientific value:*

The scientific or research value of a place will depend upon the importance of the data involved, on its rarity, quality and on the degree to which the place may contribute further substantial information.

#### - *Social value:*

Social value includes the qualities for which a place has become a focus of spiritual, political, national or other cultural sentiment to a certain group.

It is important for heritage specialist input in the EIA process to take into account the heritage management structure set up by the NHR Act. It makes provision for a 3-tier system of management including the South Africa Heritage Resources Agency (SAHRA) at a national level, Provincial Heritage Resources Authorities (PHRAs) at a provincial and the local authority. The Act makes provision for two types or forms of protection of heritage resources; i.e. formally protected and generally protected sites:

**Formally protected sites:**

- Grade 1 or national heritage sites, which are managed by SAHRA
- Grade 2 or provincial heritage sites, which are managed by the provincial HRA (EC-PHRA).
- Grade 3 or local heritage sites.

**Generally protected sites:**

- Human burials older than 60 years.
- Archaeological and palaeontological sites.
- Shipwrecks and associated remains older than 70 years.
- Structures older than 60 years.

With reference to the evaluation of sites, the certainty of prediction is definite, unless stated otherwise and if the significance of the site is rated high, the significance of the impact will also result in a high rating. The same rule applies if the significance rating of the site is low. The significance of archaeological sites is generally ranked into the following categories.

Significance	Rating Action
No significance: sites that do not require mitigation.	None
Low significance: sites, which may require mitigation.	2a. Recording and documentation (Phase 1) of site; no further action required 2b. Controlled sampling (shovel test pits, augering), mapping and documentation (Phase 2 investigation); permit required for sampling and destruction
Medium significance: sites, which require mitigation.	3. Excavation of representative sample, C14 dating, mapping and documentation (Phase 2 investigation); permit required for sampling and destruction [including 2a & 2b]
High significance: sites, where disturbance should be avoided.	4a. Nomination for listing on Heritage Register (National, Provincial or Local) (Phase 2 & 3 investigation); site management plan; permit required if utilised for education or tourism
High significance: Graves and burial places	4b. Locate demonstrable descendants through social consulting; obtain permits from applicable legislation, ordinances and regional by-laws; exhumation and reinterment [including 2a, 2b & 3]

Furthermore, the significance of archaeological sites was based on six main criteria:

- Site integrity (i.e. primary vs. secondary context),
- Amount of deposit, range of features (e.g., stonewalling, stone tools and enclosures),
- Density of scatter (dispersed scatter),
- Social value,
- Uniqueness, and
- Potential to answer current and future research questions.



**A fundamental aspect in assessing the significance and protection status of a heritage resource is often whether or not the sustainable social and economic benefits of a proposed development outweigh the conservation issues at stake. When, for whatever reason the protection of a heritage site is not deemed necessary or practical, its research potential must be assessed and mitigated in order to gain data / information, which would otherwise be lost.**

## 11 ADDENDUM B: GRAVE RELOCATION AND SITE MANAGEMENT: STATUTORY MANDATE

---

### 11.1 Archaeology, graves and the law

Note that four categories of graves can be identified. These are:

- Graves younger than 60 years;
- Graves older than 60 years, but younger than 100 years;
- Graves older than 100 years; and
- Graves of victims of conflict or of individuals of royal descent

In terms of Section 36(3) of the National Heritage Resources Act, no person may, without a permit issued by the relevant heritage resources authority:

- (a) destroy, damage, alter, exhume or remove from its original position or otherwise disturb the grave of a victim of conflict, or any burial ground or part thereof which contains such graves;
- (b) destroy, damage, alter, exhume or remove from its original position or otherwise disturb any grave or burial ground older than 60 years which is situated outside a formal cemetery administered by a local authority; or
- (c) bring onto or use at a burial ground or grave referred to in paragraph (a) Or (b) any excavation, or any equipment which assists in the detection or recovery of metals.

Human remains that are less than 60 years old are subject to provisions of the Human Tissues Act (Act 65 of 1983) and to local regulations. Exhumation of graves must conform to the standards set out in the Ordinance on Excavations (Ordinance no. 12 of 1980) (replacing the old Transvaal Ordinance no. 7 of 1925). Permission must also be gained from the descendants (where known), the National Department of Health, Provincial Department of Health, Premier of the Province and local police. Furthermore, permission must also be gained from the various landowners (i.e. where the graves are located and where they are to be relocated) before exhumation can take place.

A registered undertaker can only handle human remains or an institution declared under the Human Tissues Act (Act 65 of 1983 as amended).

Unidentified/unknown graves are also handled as older than 60 until proven otherwise.

Summary of applicable legislation and legal requirements:

- Human Tissue Act (Act 65 of 1983 as amended).
- Removal of Graves and Dead Bodies Ordinance (Ordinance no. 7 of 1925)
- Ordinance on Excavations (Ordinance no. 12 of 1980)
- Local and regional provisions, laws and by-laws
- National Heritage Resources Act (Act no. 25 of 1999)
- Permit from SAHRA for removal of human remains

### 11.2 Graves: necessary procedures

When graves are located in an area demarcated for development, the following mitigation options might be considered:

- **Conservation:** The establishment of a 50 meter buffer zone around the burial place which is fenced off and, maintained and conserved. *This option is generally recommended as the relocation of burial places is an extremely complicated, time consuming and sensitive process.*

- **Mitigation and relocation:** In the event where impact on the burial place will occur, mitigation measures may entail full grave relocation. Such a relocation process must be undertaken by suitably qualified individuals with a proven track record. The relocation must also be undertaken in full cognisance of all relevant legislation, including the specific requirements of the National Heritage Resource Act (Act no. 25 of 1999). Furthermore, a concerted effort must also be made to identify all buried individuals and to contact their relatives and descendants. Other legislative measures which may be of relevance include the Removal of Graves and Dead Bodies Ordinance (Ordinance no. 7 of 1925), the Human Tissues Act (Act no. 65 of 1983, as amended), the Ordinance on Excavations (Ordinance no. 12 of 1980) as well as any local and regional provisions, laws and by-laws that may be in place.

*Methodology for grave relocations:*

- **Documentation:** Physical documentation of graves and determining context of graves prior to exhumation: Photographic, GPS, Site Map, Historical Background.
- **Public Notices:** In order to locate and notify descendant families, notices (in compliance with the National Heritage Resources Act) must be placed on the site/s, indicating the intent of relocation. These notices, translated into at least 3 languages, have to remain in place for a minimum of 60 days. Additionally, newspaper adverts and notices on local radio stations announcements are required.
- **Social consultation:** If any descendant families were located during initial consultation/public participation phases, a full social consultation action will be lodged.
- **Permit application:** Application for a permit from SAHRA can only be obtained after all necessary consent documents from descendant families, landowners and relevant authorities have been secured.
- **Exhumation & relocation**  
The exhumation, investigation and reburial of the burial place may commence after SAHRA has issued relevant permits and permissions



**12 ADDENDUM C: CONVENTIONS USED TO ASSESS THE SIGNIFICANCE OF HERITAGE**

**12.1 Site Significance Matrix**

According to the NHRA, Section 2(vi) the **significance** of heritage sites and artefacts is determined by its aesthetic, architectural, historical, scientific, social, spiritual, linguistic or technical value in relation to the uniqueness, condition of preservation and research potential. It must be kept in mind that the various aspects are not mutually exclusive, and that the evaluation of any site is done with reference to any number of these. The following matrix is used for assessing the significance of each identified site/feature.

2. SITE EVALUATION			
2.1 Heritage Value (NHRA, section 2 [3])	High	Medium	Low
It has importance to the community or pattern of South Africa’s history or pre-colonial history.			
It possesses unique, uncommon, rare or endangered aspects of South Africa’s natural or cultural heritage.			
It has potential to yield information that will contribute to an understanding of South Africa’s natural and cultural heritage.			
It is of importance in demonstrating the principle characteristics of a particular class of South Africa’s natural or cultural places or objects.			
It has importance in exhibiting particular aesthetic characteristics valued by a particular community or cultural group.			
It has importance in demonstrating a high degree of creative or technical achievement at a particular period.			
It has marked or special association with a particular community or cultural group for social, cultural or spiritual reasons (sense of place).			
It has strong or special association with the life or work of a person, group or organisation of importance in the history of South Africa.			
It has significance through contributing towards the promotion of a local sociocultural identity and can be developed as a tourist destination.			
It has significance relating to the history of slavery in South Africa.			
It has importance to the wider understanding of temporal changes within cultural landscapes, settlement patterns and human occupation.			
2.2 Field Register Rating			
National/Grade 1 [should be registered, retained]			
Provincial/Grade 2 [should be registered, retained]			
Local/Grade 3A [should be registered, mitigation not advised]			
Local/Grade 3B [High significance; mitigation, partly retained]			
Generally Protected A [High/Medium significance, mitigation]			
Generally protected B [Medium significance, to be recorded]			
Generally Protected C [Low significance, no further action]			
2.3 Sphere of Significance	High	Medium	Low
International			
National			
Provincial			
Local			
Specific community			

**12.2 Impact Assessment Criteria**

The following table provides a guideline for the rating of impacts and recommendation of management actions for sites of heritage potential.

**Significance of the heritage resource**

This is a statement of the nature and degree of significance of the heritage resource being affected by the activity. From a heritage management perspective it is useful to distinguish between whether the significance is embedded in the physical fabric or in associations with events or persons or in the experience of a place; i.e. its visual and non-visual qualities. This statement is a primary informant to the nature and degree of significance of an impact and thus needs to be thoroughly considered. Consideration needs to be given to the significance of a heritage resource at different scales (i.e. sitespecific, local, regional, national or international) and the relationship between the heritage resource, its setting and its associations.

**Nature of the impact**

This is an assessment of the nature of the impact of the activity on a heritage resource, with some indication of its positive and/or negative effect/s. It is strongly informed by the statement of resource significance. In other words, the nature of the impact may be historical, aesthetic, social, scientific, linguistic or architectural, intrinsic, associational or contextual (visual or non-visual). In many cases, the nature of the impact will include more than one value.

**Extent**

Here it should be indicated whether the impact will be experienced:

- On a site scale, i.e. extend only as far as the activity;
- Within the immediate context of a heritage resource;
- On a local scale, e.g. town or suburb
- On a metropolitan or regional scale; or
- On a national/international scale.

**Duration**

Here it should be indicated whether the lifespan of the impact will be:

- Short term, (needs to be defined in context)
- Medium term, (needs to be defined in context)
- Long term where the impact will persist indefinitely, possibly beyond the operational life of the activity, either because of natural processes or by human intervention; or
- Permanent where mitigation either by natural process or by human intervention will not occur in such a way or in such a time span that the impact can be considered transient.

Of relevance to the duration of an impact are the following considerations:

- Reversibility of the impact; and
- Renewability of the heritage resource.

**Intensity**

Here it should be established whether the impact should be indicated as:

- Low, where the impact affects the resource in such a way that its heritage value is not affected;
- Medium, where the affected resource is altered but its heritage value continues to exist albeit in a modified way; and
- High, where heritage value is altered to the extent that it will temporarily or permanently be damaged or destroyed.

**Probability**

This should describe the likelihood of the impact actually occurring indicated as:

- Improbable, where the possibility of the impact to materialize is very low either because of design or historic experience;
- Probable, where there is a distinct possibility that the impact will occur;
- Highly probable, where it is most likely that the impact will occur; or
- Definite, where the impact will definitely occur regardless of any mitigation measures

**Confidence**

This should relate to the level of confidence that the specialist has in establishing the nature and degree of impacts. It relates to the level and reliability of information, the nature and degree of consultation with I&AP's and the dynamic of the broader socio-political context.

- High, where the information is comprehensive and accurate, where there has been a high degree of consultation and the socio-political context is relatively stable.

- Medium, where the information is sufficient but is based mainly on secondary sources, where there has been a limited targeted consultation and socio-political context is fluid.
- Low, where the information is poor, a high degree of contestation is evident and there is a state of socio-political flux.

**Impact Significance**

The significance of impacts can be determined through a synthesis of the aspects produced in terms of the nature and degree of heritage significance and the nature, duration, intensity, extent, probability and confidence of impacts and can be described as:

- Low; where it would have a negligible effect on heritage and on the decision
- Medium, where it would have a moderate effect on heritage and should influence the decision.
- High, where it would have, or there would be a high risk of, a big effect on heritage. Impacts of high significance should have a major influence on the decision;
- Very high, where it would have, or there would be high risk of, an irreversible and possibly irreplaceable negative impact on heritage. Impacts of very high significance should be a central factor in decision-making.

**12.3 Direct Impact Assessment Criteria**

The following table provides an outline of the relationship between the significance of a heritage context, the intensity of development and the significance of heritage impacts to be expected

HERITAGE CONTEXT	TYPE OF DEVELOPMENT			
	CATEGORY A	CATEGORY B	CATEGORY C	CATEGORY D
<b>CONTEXT 1</b> High heritage Value	Moderate heritage impact expected	High heritage impact expected	Very high heritage impact expected	Very high heritage impact expected
<b>CONTEXT 2</b> Medium to high heritage value	Minimal heritage impact expected	Moderate heritage impact expected	High heritage impact expected	Very high heritage impact expected
<b>CONTEXT 3</b> Medium to low heritage value	Little or no heritage impact expected	Minimal heritage impact expected	Moderate heritage impact expected	High heritage impact expected
<b>CONTEXT 4</b> Low to no heritage value	Little or no heritage impact expected	Little or no heritage impact expected	Minimal heritage value expected	Moderate heritage impact expected

**NOTE: A DEFAULT "LITTLE OR NO HERITAGE IMPACT EXPECTED" VALUE APPLIES WHERE A HERITAGE RESOURCE OCCURS OUTSIDE THE IMPACT ZONE OF THE DEVELOPMENT.**

HERITAGE CONTEXTS	CATEGORIES OF DEVELOPMENT
<p><b>Context 1:</b> Of high intrinsic, associational and contextual heritage value within a national, provincial and local context, i.e. formally declared or potential Grade 1, 2 or 3A heritage resources</p> <p><b>Context 2:</b> Of moderate to high intrinsic, associational and contextual value within a local context, i.e. potential Grade 3B heritage resources.</p> <p><b>Context 3:</b> Of medium to low intrinsic, associational or contextual heritage value within a national, provincial and local context, i.e. potential Grade 3C heritage resources</p> <p><b>Context 4:</b> Of little or no intrinsic, associational or contextual heritage value due to disturbed, degraded conditions or extent of irreversible damage.</p>	<p><b>Category A: Minimal intensity development</b></p> <ul style="list-style-type: none"> <li>- No rezoning involved; within existing use rights.</li> <li>- No subdivision involved.</li> <li>- Upgrading of existing infrastructure within existing envelopes</li> <li>- Minor internal changes to existing structures</li> <li>- New building footprints limited to less than 1000m2.</li> </ul> <p><b>Category B: Low-key intensity development</b></p> <ul style="list-style-type: none"> <li>- Spot rezoning with no change to overall zoning of a site.</li> <li>- Linear development less than 100m</li> <li>- Building footprints between 1000m2-2000m2</li> <li>- Minor changes to external envelop of existing structures (less than 25%)</li> <li>- Minor changes in relation to bulk and height of immediately adjacent structures (less than 25%).</li> </ul> <p><b>Category C: Moderate intensity development</b></p> <ul style="list-style-type: none"> <li>- Rezoning of a site between 5000m2-10 000m2.</li> </ul>



	<ul style="list-style-type: none"> <li>- Linear development between 100m and 300m.</li> <li>- Building footprints between 2000m2 and 5000m2</li> <li>- Substantial changes to external envelop of existing structures (more than 50%)</li> <li>- Substantial increase in bulk and height in relation to immediately adjacent buildings (more than 50%)</li> </ul> <p><b>Category D: High intensity development</b></p> <ul style="list-style-type: none"> <li>- Rezoning of a site in excess of 10 000m2</li> <li>- Linear development in excess of 300m.</li> <li>- Any development changing the character of a site exceeding 5000m2 or involving the subdivision of a site into three or more erven.</li> <li>- Substantial increase in bulk and height in relation to immediately adjacent buildings (more than 100%)</li> </ul>
--	--

### 12.4 Management and Mitigation Actions

The following table provides a guideline of relevant heritage resources management actions is vital to the conservation of heritage resources.

<p><b>No further action / Monitoring</b></p> <p>Where no heritage resources have been documented, heritage resources occur well outside the impact zone of any development or the primary context of the surroundings at a development footprint has been largely destroyed or altered, no further immediate action is required. Site monitoring during development, by an ECO or the heritage specialist are often added to this recommendation in order to ensure that no undetected heritage\ remains are destroyed.</p> <p><b>Avoidance</b></p> <p>This is appropriate where any type of development occurs within a formally protected or significant or sensitive heritage context and is likely to have a high negative impact. Mitigation is not acceptable or not possible. This measure often includes the change / alteration of development planning and therefore impact zones in order not to impact on resources.</p> <p><b>Mitigation</b></p> <p>This is appropriate where development occurs in a context of heritage significance and where the impact is such that it can be mitigated to a degree of medium to low significance, e.g. the high to medium impact of a development on an archaeological site could be mitigated through sampling/excavation of the remains. Not all negative impacts can be mitigated.</p> <p><b>Compensation</b></p> <p>Compensation is generally not an appropriate heritage management action. The main function of management actions should be to conserve the resource for the benefit of future generations. Once lost it cannot be renewed. The circumstances around the potential public or heritage benefits would need to be exceptional to warrant this type of action, especially in the case of where the impact was high.</p> <p><b>Rehabilitation</b></p> <p>Rehabilitation is considered in heritage management terms as a intervention typically involving the adding of a new heritage layer to enable a new sustainable use. It is not appropriate when the process necessitates the removal of previous historical layers, i.e. restoration of a building or place to the previous state/period. It is an appropriate heritage management action in the following cases:</p> <ul style="list-style-type: none"> <li>- The heritage resource is degraded or in the process of degradation and would benefit from rehabilitation.</li> <li>- Where rehabilitation implies appropriate conservation interventions, i.e. adaptive reuse, repair and maintenance, consolidation and minimal loss of historical fabric.</li> <li>- Where the rehabilitation process will not result in a negative impact on the intrinsic value of the resource.</li> </ul> <p><b>Enhancement</b></p> <p>Enhancement is appropriate where the overall heritage significance and its public appreciation value are improved. It does not imply creation of a condition that might never have occurred during the evolution of a place, e.g. the tendency to sanitize the past. This management action might result from the removal of previous layers where these layers are culturally of low significance and detract from the significance of the resource. It would be appropriate in a range of heritage contexts and applicable to a range of resources. In the case of formally protected or significant resources, appropriate enhancement action should be encouraged. Care should, however, be taken to ensure that the process does not have a negative impact on the character and context of the resource. It would thus have to be carefully monitored</p>
---