



An EOH Company

Innovation in  
Sustainability

**EOH COASTAL & ENVIRONMENTAL SERVICES: PROPOSED  
TRANSNET WATERBERG RAIL CORRIDOR EXPANSION  
PROJECT (DIEPSPRUIT LOOP) IN THE WATERBERG  
DISTRICT MUNICIPALITY, LIMPOPO PROVINCE**

**Archaeological Impact Assessment**



**EOH**

Prepared for: **EOH Coastal & Environmental Services**

Prepared by: **Exigo Sustainability**



**Email** info@exigo3.com  
**Tel** +27 012 751 2160  
**Fax** +27 086 607 2406

The Village Office Park (Block E),  
309 Glenwood Road, Faerie Glen,  
Pretoria, 0043

Postnet Suite 74,  
Private Bag X07,  
Arcadia, 0007

An EOH Company

Innovation in  
Sustainability

[www.exigo3.com](http://www.exigo3.com)

## **ARCHAEOLOGICAL IMPACT ASSESSMENT (AIA) OF DEMARCTED AREAS ON PORTIONS OF ROOIPAN 357LQ AND ZANDFONTEIN 382LQ FOR THE PROPOSED TRANSNET WATERBERG RAIL CORRIDOR EXPANSION PROJECT (DIEPSPRUIT LOOP) IN THE WATERBERG DISTRICT MUNICIPALITY, LIMPOPO PROVINCE**

---

### **Conducted on behalf of:**

EOH Coastal & Environmental Services

### **Compiled by:**

Nelius Kruger (BA, BA Hons. Archaeology Pret.)

### **Reviewed by:**

Gideon Raath (EOH Coastal & Environmental Services)

### **Document History**

Document Version 1 (Draft) – 5 April 2018

## DECLARATION

I, Nelius Le Roux Kruger, declare that –

- I act as the independent specialist;
- I am conducting any work and activity relating to the proposed Transnet Diepspruit Railway Loop Project in an objective manner, even if this results in views and findings that are not favourable to the client;
- I declare that there are no circumstances that may compromise my objectivity in performing such work;
- I have the required expertise in conducting the specialist report and I will comply with legislation, including the relevant Heritage Legislation (National Heritage Resources Act no. 25 of 1999, Human Tissue Act 65 of 1983 as amended, Removal of Graves and Dead Bodies Ordinance no. 7 of 1925, Excavations Ordinance no. 12 of 1980), the Minimum Standards: Archaeological and Palaeontological Components of Impact Assessment (SAHRA, AMAFA and the CRM section of ASAPA), regulations and any guidelines that have relevance to the proposed activity;
- I have not, and will not engage in, conflicting interests in the undertaking of the activity;
- I undertake to disclose to the applicant and the competent authority all material information in my possession that reasonably has or may have the potential of influencing - any decision to be taken with respect to the application by the competent authority; and - the objectivity of any report, plan or document to be prepared by myself for submission to the competent authority;
- All the particulars furnished by me in this declaration are true and correct.



Signature of specialist  
**Company:** Exigo Sustainability  
**Date:** 5 April 2018

Although Exigo Sustainability exercises due care and diligence in rendering services and preparing documents, Exigo Sustainability accepts no liability, and the client, by receiving this document, indemnifies Exigo Sustainability and its directors, managers, agents and employees against all actions, claims, demands, losses, liabilities, costs, damages and expenses arising from or in connection with services rendered, directly or indirectly by Exigo Sustainability and by the use of the information contained in this document.

This document contains confidential and proprietary information equally shared between Exigo Sustainability and EOH Coastal & Environmental Services, and is protected by copyright in favour of these companies and may not be reproduced, or used without the written consent of these companies, which has been obtained beforehand. This document is prepared exclusively for EOH Coastal & Environmental Services and is subject to all confidentiality, copyright and trade secrets, rules, intellectual property law and practices of South Africa. Exigo Sustainability promotes the conservation of sensitive archaeological and heritage resources and therefore uncompromisingly adheres to relevant Heritage Legislation (National Heritage Resources Act no. 25 of 1999, Human Tissue Act 65 of 1983 as amended, Removal of Graves and Dead Bodies Ordinance no. 7 of 1925, Excavations Ordinance no. 12 of 1980). In order to ensure best practices and ethics in the examination, conservation and mitigation of archaeological and heritage resources, Exigo Sustainability follows the Minimum Standards: Archaeological and Palaeontological Components of Impact Assessment as set out by the South African Heritage Resources Agency (SAHRA) and the CRM section of the Association for South African Professional Archaeologists (ASAPA).

### EXECUTIVE SUMMARY

This report details the results of an Archaeological Impact Assessment (AIA) study subject to an Environmental Basic Assessment (BA) process for the proposed Transnet Diepspruit Railway Loop Project on portions of Rooipan 357LQ and Zandfontein 382LQ in the Waterberg District Municipality, Limpopo Province. The project entails the proposed construction of a railway loop within the existing servitude of the Transnet line over an alignment of **3.3km**. The report includes background information on the area's archaeology, its representation in Southern Africa, and the history of the larger area under investigation, survey methodology and results as well as heritage legislation and conservation policies. A copy of the report will be supplied to the South African Heritage Resources Agency (SAHRA) and recommendations contained in this document will be reviewed.

<b>Project Title</b>	Transnet Diepspruit Railway Loop Project
<b>Project Location</b>	S23.907631° E27.401025°
<b>1:50 000 Map Sheet</b>	2327CD
<b>Farm Portion / Parcel</b>	Portions of Rooipan 357LQ and Zandfontein 382LQ
<b>Magisterial District / Municipal Area</b>	Waterberg District Municipality
<b>Province</b>	Limpopo Province

The history of the western Limpopo Province is reflected in a rich archaeological landscape. Sites, documenting Stone Age habitation occur in places, mostly in open air locales or in sediments alongside rivers or pans. Bantu-speaking groups moved into this area during the last millennia and these presumably Batswana groups occupied the landscape during the Late Iron Age times at around AD 1500-1800. Settlement by Iron Age communities occurred near rivers and close to rocky outcrops. European farmers, settling in the area since the middle of the 19th century, divided up the landscape into a number of farms. In recent years an urban element developed, expanding at a rapid rate, largely as a result of mining development in the region. The proposed Transnet Diepspruit Railway Loop Project area occurs within the exiting railway servitude in largely transformed and disturbed areas and no sites or features of heritage potential were located in the project area. The following general recommendations are made based on general observations at the site.

- Considering the localised nature of heritage remains, the general monitoring of the development progress by an ECO is recommended for all stages of the project. Should any subsurface palaeontological, archaeological or historical material, or burials be exposed during construction activities, all activities should be suspended and the archaeological specialist should be notified immediately
- It is essential that cognisance be taken of the larger archaeological landscape of the area in order to avoid the destruction of previously undetected heritage sites. It should be stated that the possibility of undetected archaeological remains occurring elsewhere in the project area should not be excluded. Burials and historically significant structures dating to the Colonial Period occur on farms in the area and these resources should be avoided during all phases of construction and development, including the operational phases of the development.
- Since the intrinsic heritage and social value of graves and cemeteries are highly significant, these resources require special management measures. Should human remains be discovered at any stage,

these should be reported to the Heritage Specialist and relevant authorities (SAHRA) and development activities should be suspended until the site has been inspected by the Specialist. The Specialist will advise on further management actions and possible relocation of human remains in accordance with the Human Tissue Act (Act 65 of 1983 as amended), the Removal of Graves and Dead Bodies Ordinance (Ordinance no. 7 of 1925), the National Heritage Resources Act (Act no. 25 of 1999) and any local and regional provisions, laws and by-laws pertaining to human remains. A full social consultation process should occur in conjunction with the mitigation of cemeteries and burials.

This report details the methodology, limitations and recommendations relevant to these heritage areas, as well as areas of proposed development. It should be noted that recommendations and possible mitigation measures are valid for the duration of the development process, and mitigation measures might have to be implemented on additional features of heritage importance not detected during this Phase 1 assessment (e.g. uncovered during the construction process).

## NOTATIONS AND TERMS/TERMINOLOGY

---

**Absolute dating:** Absolute dating provides specific dates or range of dates expressed in years.

**Archaeological record:** The archaeological record minimally includes all the material remains documented by archaeologists. More comprehensive definitions also include the record of culture history and everything written about the past by archaeologists.

**Artefact:** Entities whose characteristics result or partially result from human activity. The shape and other characteristics of the artefact are not altered by removal of the surroundings in which they are discovered. In the Southern African context examples of artefacts include potsherds, iron objects, stone tools, beads and hut remains.

**Assemblage:** A group of artefacts recurring together at a particular time and place, and representing the sum of human activities.

**Context:** An artefact's context usually consists of its immediate *matrix*, its *provenience* and its *association* with other artefacts. When found in *primary context*, the original artefact or structure was undisturbed by natural or human factors until excavation and if in *secondary context*, disturbance or displacement by later ecological action or human activities occurred.

**Cultural Heritage Resource:** The broad generic term *Cultural Heritage Resources* refers to any physical and spiritual property associated with past and present human use or occupation of the environment, cultural activities and history. The term includes sites, structures, places, natural features and material of palaeontological, archaeological, historical, aesthetic, scientific, architectural, religious, symbolic or traditional importance to specific individuals or groups, traditional systems of cultural practice, belief or social interaction.

**Cultural landscape:** A cultural landscape refers to a distinctive geographic area with cultural significance.

**Cultural Resource Management (CRM):** A system of measures for safeguarding the archaeological heritage of a given area, generally applied within the framework of legislation designed to safeguard the past.

**Feature:** Non-portable artefacts, in other words artefacts that cannot be removed from their surroundings without destroying or altering their original form. Hearths, roads, and storage pits are examples of archaeological features

**Impact:** A description of the effect of an aspect of the development on a specified component of the biophysical, social or economic environment within a defined time and space.

**Lithic:** Stone tools or waste from stone tool manufacturing found on archaeological sites.

**Matrix:** The material in which an artefact is situated (sediments such as sand, ashy soil, mud, water, etcetera). The matrix may be of natural origin or human-made.

**Midden:** Refuse that accumulates in a concentrated heap.

**Microlith:** A small stone tool, typically knapped of flint or chert, usually about three centimetres long or less.

**Monolith:** A geological feature such as a large rock, consisting of a single massive stone or rock, or a single piece of rock placed as, or within, a monument or site.

**Phase 1 CRM Assessment:** An Impact Assessment which identifies archaeological and heritage sites, assesses their significance and comments on the impact of a given development on the sites. Recommendations for site mitigation or conservation are also made during this phase.

**Phase 2 CRM Study:** In-depth studies which could include major archaeological excavations, detailed site surveys and mapping / plans of sites, including historical / architectural structures and features. Alternatively, the sampling of sites by collecting material, small test pit excavations or auger sampling is required. Mitigation / Rescue involves planning the protection of significant sites or sampling through excavation or collection (in terms of a permit) at sites that may be lost as a result of a given development.

**Phase 3 CRM Measure:** A Heritage Site Management Plan (for heritage conservation), is required in rare cases where the site is so important that development will not be allowed and sometimes developers are encouraged to enhance the value of the sites retained on their properties with appropriate interpretive material or displays.

**Provenience:** Provenience is the three-dimensional (horizontal and vertical) position in which artefacts are found. Fundamental to ascertaining the provenience of an artefact is *association*, the co-occurrence of an artefact with other archaeological remains; and *superposition*, the principle whereby artefacts in lower levels of a matrix were deposited before the artefacts found in the layers above them, and are therefore older.

**Random Sampling:** A probabilistic sampling strategy whereby randomly selected sample blocks in an area are surveyed. These are fixed by drawing coordinates of the sample blocks from a table of random numbers.

**Scoping Assessment:** The process of determining the spatial and temporal boundaries (i.e. extent) and key issues to be addressed in an impact assessment. The main purpose is to focus the impact assessment on a manageable number of important questions on which decision making is expected to focus and to ensure that only key issues and reasonable alternatives are examined. The outcome of the scoping process is a Scoping Report that includes issues raised during the scoping process, appropriate responses and, where required, terms of reference for specialist involvement.

**Site (Archaeological):** A distinct spatial clustering of artefacts, features, structures, and organic and environmental remains, as the residue of human activity. These include surface sites, caves and rock shelters, larger open-air sites, sealed sites (deposits) and river deposits. Common functions of archaeological sites include living or habitation sites, kill sites, ceremonial sites, burial sites, trading, quarry, and art sites,

**Stratigraphy:** This principle examines and describes the observable layers of sediments and the arrangement of strata in deposits

**Systematic Sampling:** A probabilistic sampling strategy whereby a grid of sample blocks is set up over the survey area and each of these blocks is equally spaced and searched.

**Trigger:** A particular characteristic of either the receiving environment or the proposed project which indicates that there is likely to be an *issue* and/or potentially significant *impact* associated with that proposed development that may require specialist input. Legal requirements of existing and future legislation may also trigger the need for specialist involvement.

### LIST OF ABBREVIATIONS

Abbreviation	Description
ASAPA	Association for South African Professional Archaeologists
AIA	Archaeological Impact Assessment
BP	Before Present
BCE	Before Common Era
CRM	Culture Resources Management
EIA	Early Iron Age (also Early Farmer Period)
EIA	Environmental Impact Assessment
EFP	Early Farmer Period (also Early Iron Age)
ESA	Earlier Stone Age
GIS	Geographic Information Systems
HIA	Heritage Impact Assessment
ICOMOS	International Council on Monuments and Sites
K2/Map	K2/Mapungubwe Period
LFP	Later Farmer Period (also Later Iron Age)
LIA	Later Iron Age (also Later Farmer Period)
LSA	Later Stone Age
MIA	Middle Iron Age (also Early later Farmer Period)
MRA	Mining Right Area
MSA	Middle Stone Age
NHRA	National Heritage Resources Act No.25 of 1999, Section 35
PFS	Pre-Feasibility Study
PHRA	Provincial Heritage Resources Authorities
SAFA	Society for Africanist Archaeologists
SAHRA	South African Heritage Resources Association
YCE	Years before Common Era (Present)

**TABLE OF CONTENTS**

<b>EXECUTIVE SUMMARY.....</b>	<b>3</b>
<b>1 BACKGROUND .....</b>	<b>9</b>
1.1 SCOPE AND MOTIVATION .....	9
1.2 PROJECT DIRECTION .....	9
1.3 PROJECT BRIEF .....	9
1.4 TERMS OF REFERENCE.....	11
1.5 CRM: LEGISLATION, CONSERVATION AND HERITAGE MANAGEMENT .....	11
1.5.1 <i>Legislation regarding archaeology and heritage sites</i> .....	12
1.5.2 <i>Background to HIA and AIA Studies</i> .....	14
<b>2 REGIONAL CONTEXT.....</b>	<b>14</b>
2.1 AREA LOCATION .....	14
2.2 AREA DESCRIPTION: RECEIVING ENVIRONMENT .....	14
2.3 SITE DESCRIPTION .....	14
<b>3 METHOD OF ENQUIRY.....</b>	<b>17</b>
3.1 SOURCES OF INFORMATION .....	17
3.1.1 <i>Desktop Study</i> .....	17
3.1.2 <i>Aerial Survey</i> .....	18
3.1.3 <i>Mapping of sites</i> .....	18
3.1.4 <i>Field Survey</i> .....	18
3.1.5 <i>General Public Liaison</i> .....	18
3.2 LIMITATIONS.....	18
3.2.1 <i>Access</i> .....	18
3.2.2 <i>Visibility</i> .....	19
3.2.3 <i>Limitations and Constraints</i> .....	22
3.3 IMPACT ASSESSMENT.....	22
<b>4 ARCHAEO-HISTORICAL CONTEXT.....</b>	<b>22</b>
4.1 THE ARCHAEOLOGY OF SOUTHERN AFRICA .....	22
4.2 THE WATERBERG AND WESTERN LIMPOPO: SPECIFIC THEMES. ....	23
4.2.1 <i>Early History and the Stone Ages</i> .....	23
4.2.2 <i>Iron Age / Farmer Period</i> .....	24
4.2.3 <i>Rock Art of the Waterberg Landscape</i> .....	26
4.2.4 <i>Pastoralism and the last 2000 years</i> .....	26
4.2.5 <i>Later History</i> .....	26
<b>5 RESULTS: ARCHAEOLOGICAL SURVEY .....</b>	<b>29</b>
5.1 THE STONE AGE .....	29
5.2 THE IRON AGE FARMER PERIOD .....	29
5.3 HISTORICAL / COLONIAL PERIOD AND RECENT TIMES .....	29
5.4 GRAVES.....	29
<b>6 RESULTS: STATEMENT OF SIGNIFICANCE AND IMPACT RATING .....</b>	<b>29</b>
6.1 POTENTIAL IMPACTS AND SIGNIFICANCE RATINGS.....	29
6.1.1 <i>General assessment of impacts on resources</i> .....	29
6.1.2 <i>Direct impact rating</i> .....	30
6.1.3 <i>Discussion: Evaluation of Results and Impacts</i> .....	30
6.1.4 <i>Archaeology</i> .....	30
6.1.5 <i>Built Environment</i> .....	30
6.1.6 <i>Cultural Landscape</i> .....	30
6.1.7 <i>Graves / Human Burials Sites</i> .....	30
6.2 MANAGEMENT ACTIONS.....	31



<b>7</b>	<b>RECOMMENDATIONS</b> .....	<b>32</b>
<b>8</b>	<b>GENERAL COMMENTS AND CONDITIONS</b> .....	<b>32</b>
<b>9</b>	<b>BIBLIOGRAPHY</b> .....	<b>34</b>
9.1	PUBLISHED LITERATURE.....	34
9.2	UNPUBLISHED SOURCES AND REPORTS.....	35
9.3	WEB SOURCES AND LEGISLATION.....	36
<b>10</b>	<b>ADDENDUM 1: HERITAGE LEGISLATION BACKGROUND</b> .....	<b>37</b>
10.1	CRM: LEGISLATION, CONSERVATION AND HERITAGE MANAGEMENT.....	37
10.1.1	Legislation regarding archaeology and heritage sites.....	37
10.1.2	Background to HIA and AIA Studies.....	38
10.2	ASSESSING THE SIGNIFICANCE OF HERITAGE RESOURCES.....	40
	- CATEGORIES OF SIGNIFICANCE.....	40
<b>11</b>	<b>ADDENDUM 2: CONVENTIONS USED TO ASSESS THE SIGNIFICANCE OF HERITAGE</b> .....	<b>42</b>
11.1	SITE SIGNIFICANCE MATRIX.....	42
11.2	IMPACT ASSESSMENT CRITERIA.....	43
11.3	DIRECT IMPACT ASSESSMENT CRITERIA.....	44
11.4	MANAGEMENT AND MITIGATION ACTIONS.....	45

**LIST OF FIGURES**

Figure 1-1:	Aerial map indicating the extent of the proposed Transnet Diepspruit Railway Loop Project.....	10
Figure 1-2:	Diagram illustrating a railway loop (courtesy of Transnet).....	11
Figure 2-1:	1:50 00 Map representation of the location of the proposed Transnet Diepspruit Railway Loop Project (sheet 2327CD).....	15
Figure 2-2:	Aerial map providing a regional context for the proposed Transnet Diepspruit Railway Loop Project.....	16
Figure 3-1:	View of the project area at the southern offset of the proposed railway loop alignment.....	19
Figure 3-2:	The Transnet service road along the proposed railway loop alignment.....	19
Figure 3-3:	View of a small livestock enclosure and concrete dam in the vicinity of the proposed railway loop alignment.....	20
Figure 3-4:	View of the current railway line. The proposed railway loop will be constructed directly right of this line.....	20
Figure 3-5:	View of a culvert which was constructed in 1980 along with the railway line.....	20
Figure 3-6:	The Transnet service road along the proposed railway loop alignment, looking south.....	21
Figure 3-7:	View of indicator species within the current Transnet railway servitude.....	21
Figure 3-8:	View of the northern offset of the proposed railway loop alignment.....	21
Figure 4-1:	Typical ESA handaxe (left) and cleaver (center). To the right is a MSA scraper (right, top), point (right, middle) and blade (right, bottom).....	24
Figure 4-2:	Map detailing the distribution of 16 <sup>th</sup> century Maloko (left), 17 <sup>th</sup> century Madikwe (centre) and 18 <sup>th</sup> century Buispoort tradition sites (After Huffman 2007).....	25
Figure 4-3:	Ceramic decoration motives typical of 17 <sup>th</sup> century Madikwe (left) and later Buispoort (right) facies (After Huffman 2007).....	26
Figure 4-4:	Title deed document for the farm Zandfontein (originally established in 1868) as updated in 1976 to provide for the construction of a power line. Note the absence of the Transnet railway line at this time.....	28

## 1 BACKGROUND

---

### 1.1 Scope and Motivation

Exigo Sustainability was commissioned by EOH Coastal & Environmental Services for an Archaeological Impact Assessment (AIA) study subject to an Environmental Basic Assessment (BA) process for the proposed Transnet Diepspruit Railway Loop Project in the Limpopo Province. The rationale of this AIA is to determine the presence of heritage resources such as archaeological and historical sites and features, graves and places of religious and cultural significance in previously unstudied areas; to consider the impact of the proposed project on such heritage resources, and to submit appropriate recommendations with regard to the cultural resources management measures that may be required at affected sites / features.

### 1.2 Project Direction

Exigo Sustainability's expertise ensures that all projects be conducted to the highest international ethical and professional standards. As archaeological specialist for Exigo Sustainability, Mr Neels Kruger acted as field director for the project; responsible for the assimilation of all information, the compilation of the final consolidated AIA report and recommendations in terms of heritage resources on the demarcated project areas. Mr Kruger is an accredited archaeologist and Culture Resources Management (CRM) practitioner with the Association of South African Professional Archaeologists (ASAPA), a member of the Society for Africanist Archaeologists (SAFA) and the Pan African Archaeological Association (PAA) as well as a Master's Degree candidate in archaeology at the University of Pretoria.

### 1.3 Project Brief

The author was contracted to undertake a heritage assessment of proposed activities for the new Diepspruit Railway Loop south of Lephalale in order to identify possible areas of heritage sensitivity and constraints that would affect the development, and provide recommendations as to potential mitigation and management of such heritage receptors. The proposed project entails is the construction of a new loop of **3.3km** next to the existing railway line between Thabazimbi and Lephalale. A loop is a place on a railway line where trains travelling in opposite directions can pass each other. A loop is usually double ended and connected to the main track at both ends (see Figure 1-1). Construction works for the project will include the following:

- **Civil**

Construction of a 3.3 kilometer long loop of 20t axle loading with formation layers according to the standard Transnet specification. The construction of the new loop will traverse through an embankment which ranges from  $\pm 0.5\text{m}$  to  $\pm 2\text{m}$  high between Km points 77.100 to 80.400.

- **Perway**

The perway scope includes the installation of 3.3 kilometer track.

- **Signalling**

Install a localized remote control system to enable the Train Driver to remotely operate tangential point sets on both sides of the loop. The system uses a radio control to detect train presence.

- **Structures**

There is a total of four (4) box culverts in this loop. There is no extension of culverts required. The four existing culverts and headwalls were designed and constructed in such a manner that it can accommodate the proposed loop line. This railway line was constructed in 1980 together with the associated structures.

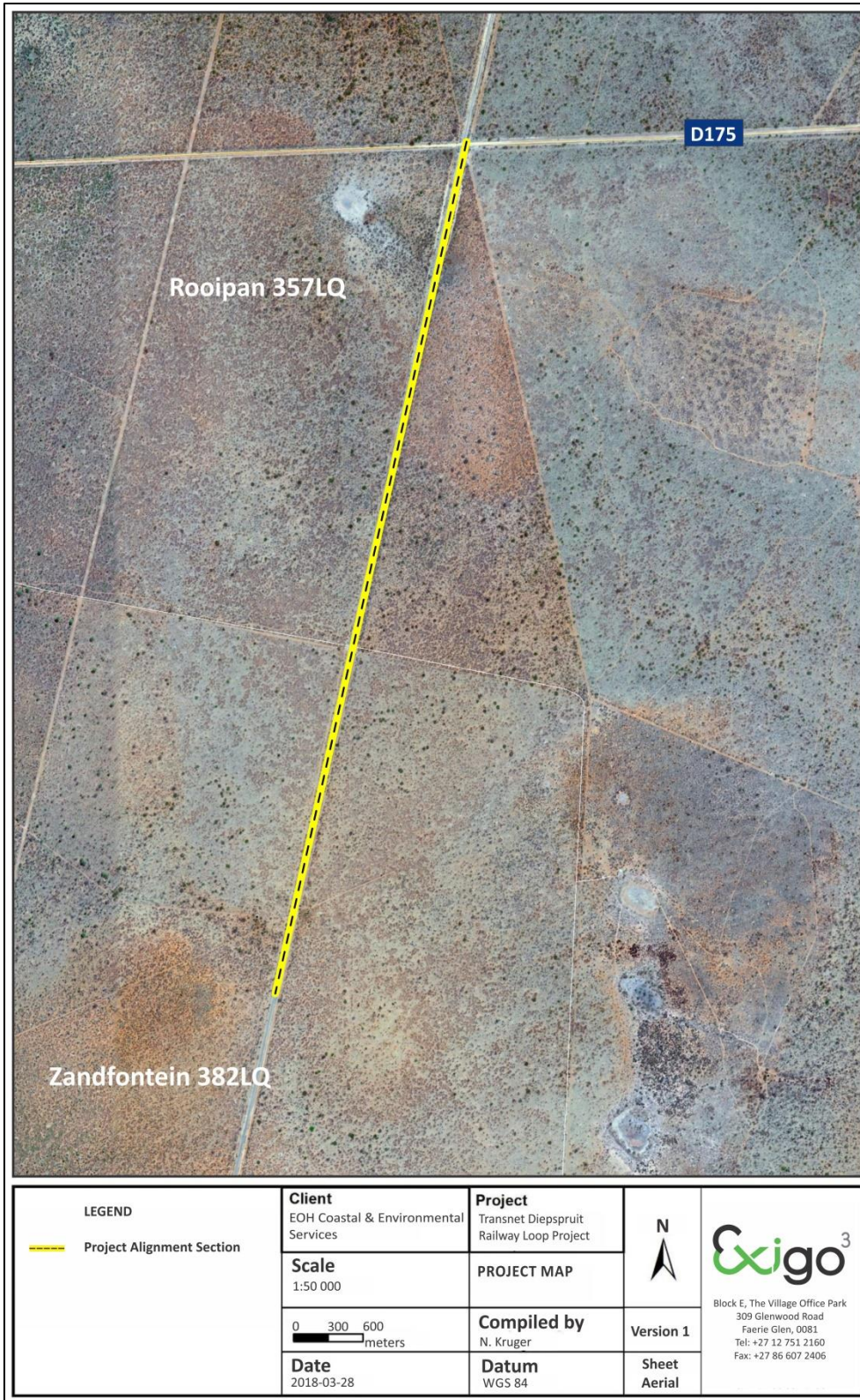


Figure 1-1: Aerial map indicating the extent of the proposed Transnet Diepspruit Railway Loop Project.



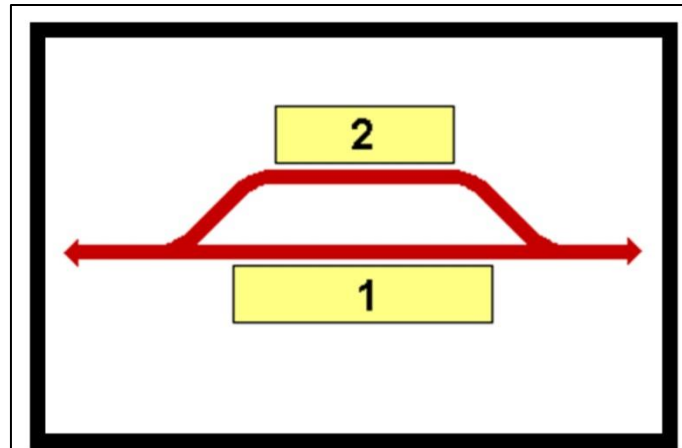


Figure 1-2: Diagram illustrating a railway loop (courtesy of Transnet).

#### 1.4 Terms of Reference

Heritage specialist input into the Environmental Impact Assessment (EIA) process is essential to ensure that, through the management of change, developments still conserve our heritage resources. It is also a legal requirement for certain development categories which may have an impact on heritage resources. Thus, EIAs should always include an assessment of heritage resources. The heritage component of the EIA is provided for in the **National Environmental Management Act, (Act 107 of 1998)** and endorsed by section 38 of the **National Heritage Resources Act (NHRA - Act 25 of 1999)**. In addition, the NHRA protects all structures and features older than 60 years, archaeological sites and material and graves as well as burial sites. The objective of this legislation is to ensure that developers implement measures to limit the potentially negative effects that the development could have on heritage resources. Based hereon, this project functioned according to the following **terms of reference** for heritage specialist input:

- *Provide a detailed description of all archaeological artefacts, structures (including graves) and settlements which may be affected, if any.*
- *Assess the nature and degree of significance of such resources within the area.*
- *Establish heritage informants/constraints to guide the development process through establishing thresholds of impact significance;*
- *Assess and rate any possible impact on the archaeological and historical remains within the area emanating from the proposed development activities.*
- *Propose possible heritage management measures provided that such action is necessitated by the development.*
- *Liaise and consult with the South African Heritage Resources Agency (SAHRA)*

#### 1.5 CRM: Legislation, Conservation and Heritage Management

The broad generic term *Cultural Heritage Resources* refers to any physical and spiritual property associated with past and present human use or occupation of the environment, cultural activities and history. The term includes sites, structures, places, natural features and material of palaeontological, archaeological, historical, aesthetic, scientific, architectural, religious, symbolic or traditional importance to specific individuals or groups, traditional systems of cultural practice, belief or social interaction.

### 1.5.1 Legislation regarding archaeology and heritage sites

The South African Heritage Resources Agency (SAHRA) and its provincial offices aim to conserve and control the management, research, alteration and destruction of cultural resources of South Africa. It is therefore vitally important to adhere to heritage resource legislation at all times.

#### a. National Heritage Resources Act No 25 of 1999, section 35

According to the National Heritage Resources Act No 25 of 1999 (section 35) the following features are protected as cultural heritage resources:

- a. Archaeological artifacts, structures and sites older than 100 years
- b. Ethnographic art objects (e.g. prehistoric rock art) and ethnography
- c. Objects of decorative and visual arts
- d. Military objects, structures and sites older than 75 years
- e. Historical objects, structures and sites older than 60 years
- f. Proclaimed heritage sites
- g. Grave yards and graves older than 60 years
- h. Meteorites and fossils
- i. Objects, structures and sites of scientific or technological value.

In addition, the national estate includes the following:

- a. Places, buildings, structures and equipment of cultural significance
- b. Places to which oral traditions are attached or which are associated with living heritage
- c. Historical settlements and townscapes
- d. Landscapes and features of cultural significance
- e. Geological sites of scientific or cultural importance
- f. Archaeological and paleontological importance
- g. Graves and burial grounds
- h. Sites of significance relating to the history of slavery
- i. Movable objects (e.g. archaeological, paleontological, meteorites, geological specimens, military, ethnographic, books etc.)

With regards to activities and work on archaeological and heritage sites this Act states that:

*“No person may alter or demolish any structure or part of a structure which is older than 60 years without a permit by the relevant provincial heritage resources authority.” (34. [1] 1999:58)*

and

*“No person may, without a permit issued by the responsible heritage resources authority-*

- (a) *destroy, damage, excavate, alter, deface or otherwise disturb any archaeological or palaeontological site or any meteorite;*

- (b) *destroy, damage, excavate, remove from its original position, collect or own any archaeological or palaeontological material or object or any meteorite;*
- (c) *trade in, sell for private gain, export or attempt to export from the Republic any category of archaeological or palaeontological material or object, or any meteorite; or*
- (d) *bring onto or use at an archaeological or palaeontological site any excavation equipment or any equipment which assist in the detection or recovery of metals or archaeological and palaeontological material or objects, or use such equipment for the recovery of meteorites. (35. [4] 1999:58)."*

and

*"No person may, without a permit issued by SAHRA or a provincial heritage resources agency-*

- (a) *destroy, damage, alter, exhume or remove from its original position or otherwise disturb the grave of a victim of conflict, or any burial ground or part thereof which contains such graves;*
- (b) *destroy, damage, alter, exhume, remove from its original position or otherwise disturb any grave or burial ground older than 60 years which is situated outside a formal cemetery administered by a local authority;*
- (c) *bring onto or use at a burial ground or grave referred to in paragraph (a) or (b) and excavation equipment, or any equipment which assists in the detection or recovery of metals (36. [3] 1999:60)."*

#### **b. Human Tissue Act of 1983 and Ordinance on the Removal of Graves and Dead Bodies of 1925**

Graves and burial grounds are commonly divided into the following subsets:

- a. ancestral graves
- b. royal graves and graves of traditional leaders
- c. graves of victims of conflict
- d. graves designated by the Minister
- e. historical graves and cemeteries
- f. human remains

Graves 60 years or older are heritage resources and fall under the jurisdiction of both the National Heritage Resources Act and the Human Tissues Act of 1983. However, graves younger than 60 years are specifically protected by the Human Tissues Act (Act 65 of 1983) and Ordinance on Excavations (Ordinance no. 12 of 1980) as well as any local and regional provisions, laws and by-laws. Such burial places also fall under the jurisdiction of the National Department of Health and the Provincial Health Departments.

#### **c. National Heritage Resources Act No 25 of 1999, section 35**

This act (Act 107 of 1998) states that a survey and evaluation of cultural resources must be done in areas where development projects, that will change the face of the environment, will be undertaken. The impact of the development on these resources should be determined and proposals for the mitigation thereof are made. Environmental management should also take the cultural and social needs of people into account. Any disturbance of landscapes and sites that constitute the nation's cultural heritage should be avoided as far as

possible and where this is not possible the disturbance should be minimized and remedied.

### 1.5.2 Background to HIA and AIA Studies

South Africa's unique and non-renewable archaeological and palaeontological heritage sites are 'generally' protected in terms of the National Heritage Resources Act (Act No 25 of 1999, section 35) and may not be disturbed at all without a permit from the relevant heritage resources authority. Heritage sites are frequently threatened by development projects and both the environmental and heritage legislation require impact assessments (HIAs & AIAs) that identify all heritage resources in areas to be developed. Particularly, these assessments are required to make recommendations for protection or mitigation of the impact of the sites. HIAs and AIAs should be done by qualified professionals with adequate knowledge to (a) identify all heritage resources including archaeological and palaeontological sites that might occur in areas of developed and (b) make recommendations for protection or mitigation of the impact on the sites.

**A detailed guideline of statutory terms and requirements is supplied in Addendum 1.**

## 2 REGIONAL CONTEXT

---

### 2.1 Area Location

The proposed Transnet Diepspruit Railway Loop Project occurs on portions of Rooipan 357LQ and Zandfontein 382LQ in the Waterberg District Municipality, Limpopo Province. The project area is along the railway line between Thabazimbi and Lephalale between railway km points 77.100 (**S23°55'33.42" E27°23'46.80"**) and 80.400 (**S23°53'46.79"S, E27°24'12.46"E**).

The area is situated approximately 50km south-west of Lephalale and 70km north of Thabazimbi.

The study areas appear on 1:50000 map sheet 2327CD (see Figure 2-1).

### 2.2 Area Description: Receiving Environment

The study area lies within the Savanna biome which is the largest biome in Southern Africa. It is characterized by a grassy ground layer and a distinct upper layer of woody plants (trees and shrubs). Fire and grazing also keep the grassy layer dominant. The most recent classification of the area by Mucina & Rutherford shows that the site is classified as Dwaalboom Thornveld. The project area is characterised by slightly undulating to flat plains with major drainage channels bisecting the area. The topography across the site is slightly undulating.

### 2.3 Site Description

The proposed railway loop alignment is situated within the existing Transnet railway servitude and as such, natural surroundings in the study area have largely been altered and disturbed which might have compromised the presence of heritage remains. No significant landscape features occur in the project area.

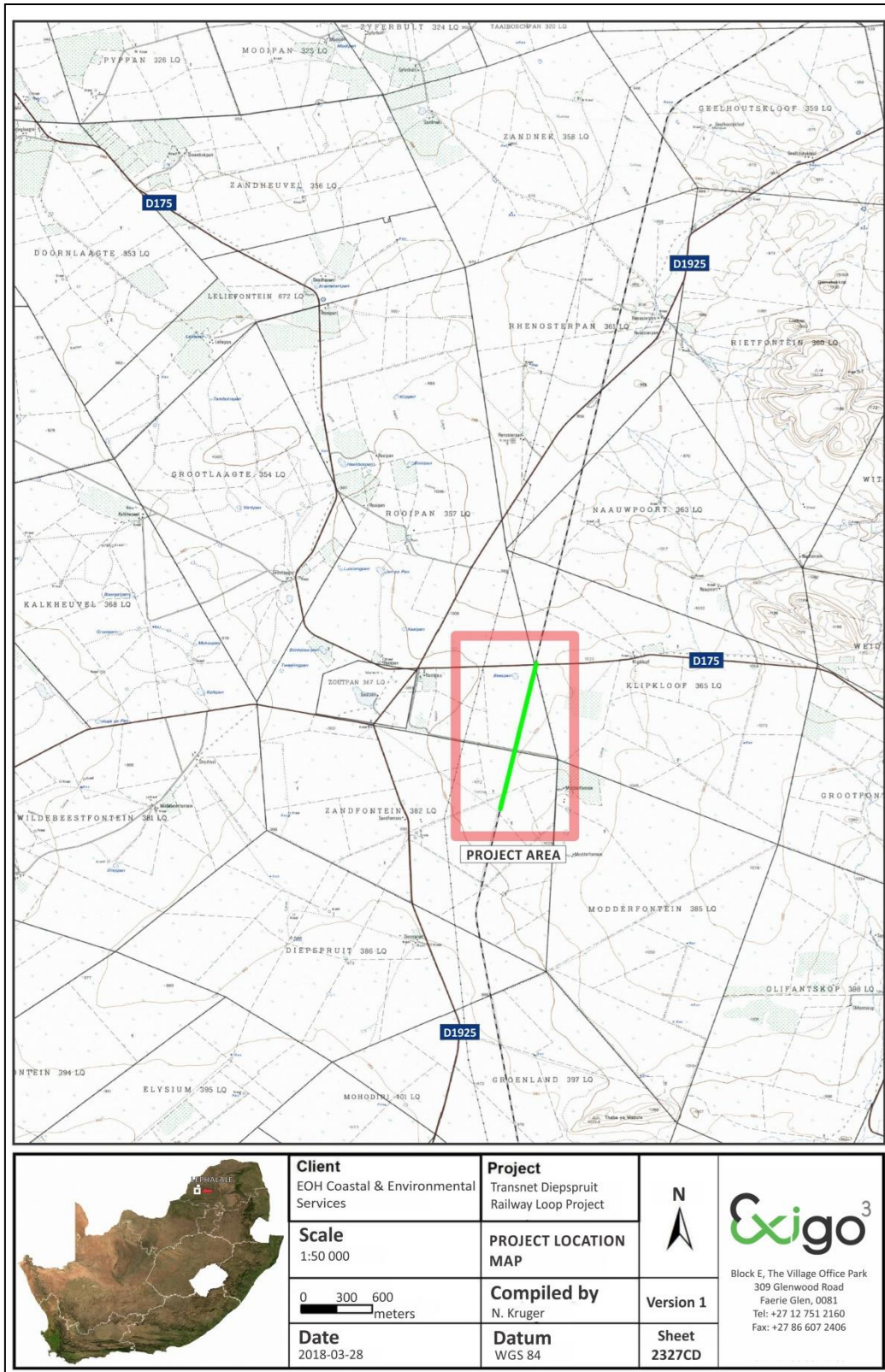


Figure 2-1: 1:50 00 Map representation of the location of the proposed Transnet Diepspruit Railway Loop Project (sheet 2327CD).



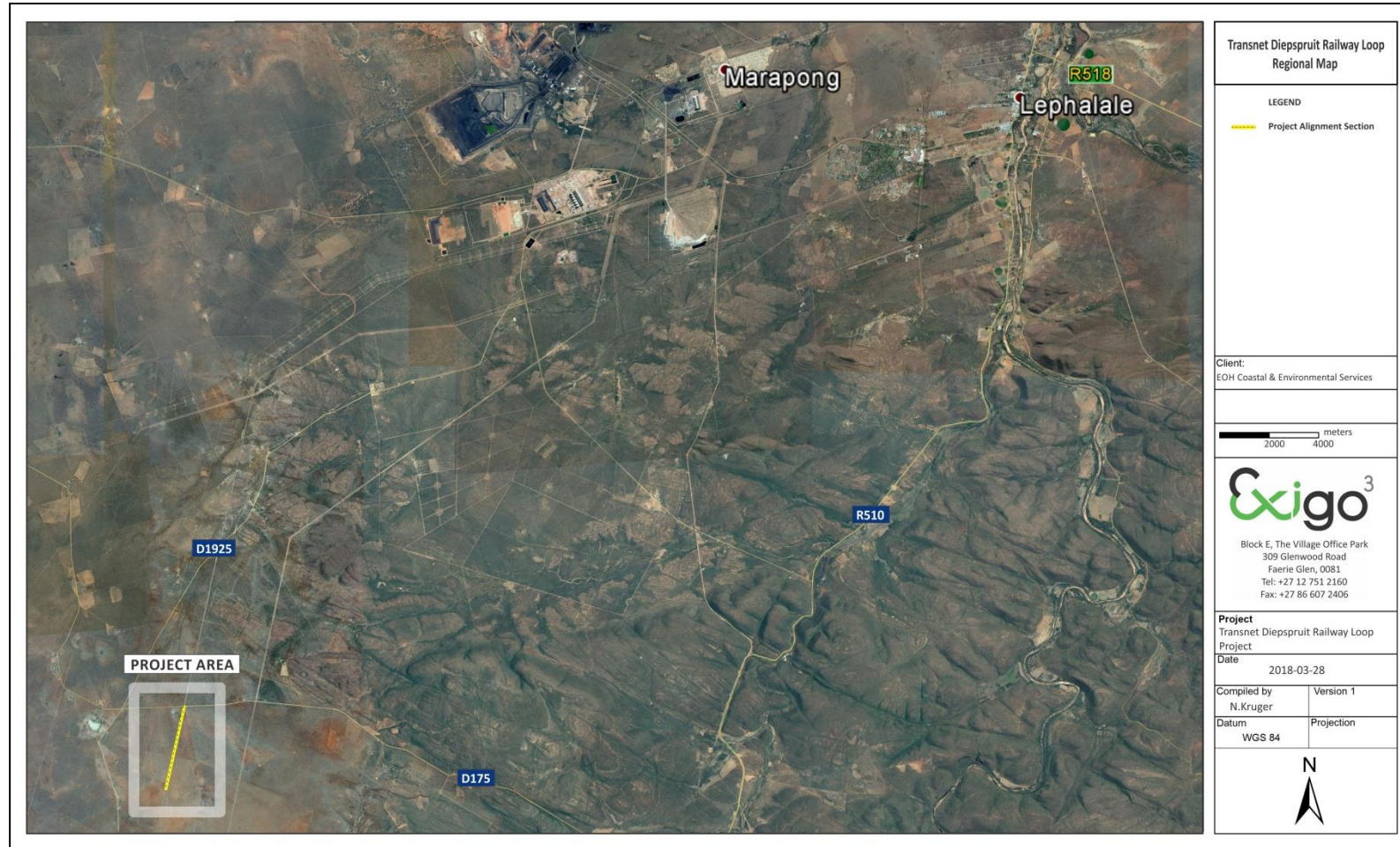


Figure 2-2: Aerial map providing a regional context for the proposed Transnet Diepspruit Railway Loop Project.

### 3 METHOD OF ENQUIRY

---

#### 3.1 Sources of Information

Data from detailed desktop, aerial and field studies were employed in order to sample surface areas systematically and to ensure a high probability of heritage site recording.

##### 3.1.1 Desktop Study

The larger landscape of Waterberg has been well documented in terms of its archaeology and history. A desktop study was prepared in order to contextualize the proposed project within a larger historical milieu. Numerous academic papers and research articles supplied a historical context for the proposed project and archival sources, aerial photographs, historical maps and local histories were used to create a baseline of the landscape's heritage. In addition, the study drew on available unpublished Heritage Assessment reports to give a comprehensive representation of known sites in the study area. These included:

Hutten, M. 2013c. HIA for the proposed solar park development on the farm Aapieskruil near Koedoeskop, Limpopo Province. Compiled for: Jonk Begin Omgewingsdienste.

Fourie, W. 2012. Wachteenbietjesdraai 350 KQaAnd Kwaggashoek 345 KQ Heritage Impact Report on proposed mining activities of Project Phoenix. PGS Heritage Consultants

Fourie, W. 2014. Proposed Development of the Steenbokpan Extension 3 Township on the Remainder and Portions 1, 2, 3 and 4 of the Farm Grootdoorn 292 LQ, Portions 20, 22 and 25 of the Farm Theunispan 293 LQ and Portion 3 of the Farm Steenbokpan 295 LQ at Steenbokpan, Lephallale Local Municipality, Waterberg District, Limpopo Province. Client: Flexilor Properties (Pty) Ltd . PGS Heritage Consultants

Van Schalkwyk, J.A. 1994. A survey of archaeological and cultural historical resources in the Amandelbult mining lease area. Unpublished report 94KH03. Pretoria: National Cultural History Museum.

Van Schalkwyk, J.A. 2001. A survey of cultural resources in two development areas, Amandelbult, Northern Province. Unpublished report 2001KH13. Pretoria: National Cultural History Museum.

Van Schalkwyk, J.A. 2003. A survey of archaeological sites for the Amandelbult Platinum Mine Seismic exploration program. Unpublished report 2003KH16. Pretoria: National Cultural History Museum.

Van Schalkwyk, J.A. 2004. Heritage impact report for the Amandelbult electricity sub-transmission lines, Amandelbult Platinum Mine, Limpopo Province. Unpublished report 2004KH32. Pretoria: National Cultural History Museum.

Van Schalkwyk, J. 2007. Survey of heritage resources in the location of the proposed Merensky Mining Project, Amandelbult Section, Rustenburg Platinum Mine, Limpopo Province. Prepared For WSP Environmental.

Van Vollenhoven, A. July 2013. A Report on a Cultural Heritage Impact Assessment for the Continental Limestone Mine, close to Thabazimbi, Limpopo Province.

### 3.1.2 Aerial Survey

Aerial photography is often employed to locate and study archaeological sites, particularly where larger scale area surveys are performed. This method was applied to assist the foot and automotive site surveys where depressions, variation in vegetation, soil marks and landmarks were examined. Specific attention was given to shadow sites (shadows of walls or earthworks which are visible early or late in the day), crop mark sites (crop mark sites are visible because disturbances beneath crops cause variations in their height, vigour and type) and soil marks (e.g. differently coloured or textured soil (soil marks) might indicate ploughed-out burial mounds). Attention was also given to moisture differences, as prolonged dampening of soil as a result of precipitation frequently occurs over walls or embankments. In addition, historical aerial photos obtained during the archival search were scrutinized and features that were regarded as important in terms of heritage value were identified and if they were located within the boundaries of the project area they were physically visited in an effort to determine whether they still exist and in order to assess their current condition and significance. By superimposing high frequency aerial photographs with images generated with Google Earth as well as historical aerial imagery, potential sensitive areas were subsequently identified, geo-referenced and transferred to a handheld GPS device. These areas served as referenced points from where further vehicular and pedestrian surveys were carried out. From the aerial survey (historical and more recent aerial imagery) it is evident that the majority of the Transnet Diepspruit Railway Loop Project area was transformed with the initial railway line construction in the 1980's. No prominent man-made features or structures are visible on aerial imagery of the project area.

### 3.1.3 Mapping of sites

Merging data generated during the desktop study and the aerial survey, sites and areas of possible heritage potential were plotted on historical and more recent 1:50 000 topographic maps of the larger area using ArcGIS 9.3. These maps were then superimposed on high definition aerial representations in order to graphically demonstrate the geographical locations and distribution of potentially sensitive landscapes.

### 3.1.4 Field Survey

Archaeological survey implies the systematic procedure of the identification of archaeological sites. An archaeological survey of the Transnet Diepspruit Railway Loop Project area was conducted in March 2018. The process encompassed a systematic field survey in accordance with standard archaeological practice by which heritage resources are observed and documented. In order to sample surface areas systematically and to ensure a high probability of site recording, the proposed project area was systematically surveyed on foot and motor vehicle. GPS reference points identified during the aerial survey were also visited and random spot checks were made (see detail in previous section). Using a Garmin E-trex Legend GPS objects and structures of archaeological / heritage value were recorded and photographed with a Canon 450D Digital camera. Real time aerial orientation, by means of a mobile Google Earth application was also employed to investigate possible disturbed areas during the survey.

### 3.1.5 General Public Liaison

Consultation with officials from Transnet who are familiar with the area in question did not identify any heritage receptors in the project area.

## 3.2 Limitations

### 3.2.1 Access

The study area is accessed directly via the D175 regional road that links up with a Transnet service road at the project area. Access control is not applied to the survey areas and no restrictions were encountered



during the site visit in terms of access.

### 3.2.2 Visibility

The surrounding vegetation in the study area is mostly comprised out of mixed grasslands and scattered trees. Generally, the landscape is densely vegetated with grasses and Thornveld vegetation but visibility did not prove to be a constraint at the time of the AIA survey (March 2018) as much of the project area have been transformed (see Figures 3-1 to 3-8). In single cases during the survey sub-surface inspection was possible. Where applied, this revealed no archaeological deposits.



Figure 3-1: View of the project area at the southern offset of the proposed railway loop alignment.



Figure 3-2: The Transnet service road along the proposed railway loop alignment.



Figure 3-3: View of a small livestock enclosure and concrete dam in the vicinity of the proposed railway loop alignment.



Figure 3-4: View of the current railway line. The proposed railway loop will be constructed directly right of this line.



Figure 3-5: View of a culvert which was constructed in 1980 along with the railway line.





Figure 3-6: The Transnet service road along the proposed railway loop alignment, looking south.



Figure 3-7: View of indicator species within the current Transnet railway servitude.



Figure 3-8: View of the northern offset of the proposed railway loop alignment.

### 3.2.3 Limitations and Constraints

The pedestrian site survey for the Transnet Diepspruit Railway Loop Project Project AIA primarily focused around areas tentatively identified as sensitive and of high heritage probability (i.e. those noted during the aerial survey) as well as areas of high human settlement catchment. No notable constraints were encountered during the site survey. It should be noted that, ven though it might be assumed that survey findings are representative of the heritage landscape of the project area for the Transnet Diepspruit Railway Loop Project, it should be stated that the possibility exists that individual sites could be missed due to the localised nature of some heritage remains as well as the possible presence of sub-surface archaeology. Therefore, maintaining due cognisance of the integrity and accuracy of the archaeological survey, it should be stated that the heritage resources identified during the study do not necessarily represent all the heritage resources present in the project area. The subterranean nature of some archaeological sites, dense vegetation cover and visibility constraints sometimes distort heritage representations and any additional heritage resources located during consequent development phases must be reported to the Heritage Resources Authority or an archaeological specialist.

### 3.3 Impact Assessment

For consistency among specialists, impact assessment ratings by Exigo Specialist are generally done using the Plomp<sup>1</sup> impact assessment matrix scale supplied by Exigo. According to this matrix scale, each heritage receptor in the study area is given an impact assessment. A cumulative assessment for the proposed project is also included.

## 4 ARCHAEO-HISTORICAL CONTEXT

### 4.1 The archaeology of Southern Africa

Archaeology in Southern Africa is typically divided into two main fields of study, the **Stone Age** and the **Iron Age** or **Farmer Period**. The following table provides a concise outline of the chronological sequence of periods, events, cultural groups and material expressions in Southern African pre-history and history.

Table 1 Chronological Periods across Southern Africa

Period	Epoch	Associated cultural groups	Typical Material Expressions
Early Stone Age 2.5m – 250 000 YCE	Pleistocene	Early Hominins: <i>Australopithecines</i> <i>Homo habilis</i> <i>Homo erectus</i>	Typically large stone tools such as hand axes, choppers and cleavers.
Middle Stone Age 250 000 – 25 000 YCE	Pleistocene	First <i>Homo sapiens</i> species	Typically smaller stone tools such as scrapers, blades and points.
Late Stone Age 20 000 BC – present	Pleistocene / Holocene	<i>Homo sapiens sapiens</i> including San people	Typically small to minute stone tools such as arrow heads, points and bladelets.
Early Iron Age / Early Farmer Period 300 – 900 AD	Holocene	First Bantu-speaking groups	Typically distinct ceramics, bead ware, iron objects, grinding stones.
Middle Iron Age (Mapungubwe / K2) / early Later Farmer Period 900 – 1350 AD	Holocene	Bantu-speaking groups, ancestors of present-day groups	Typically distinct ceramics, bead ware and iron / gold / copper objects, trade goods and grinding stones.

<sup>1</sup> Plomp, H.,2004

Late Iron Age / Later Farmer Period 1400 AD -1850 AD	Holocene	Various Bantu-speaking groups including Venda, Thonga, Sotho-Tswana and Zulu	Distinct ceramics, grinding stones, iron objects, trade objects, remains of iron smelting activities including iron smelting furnace, iron slag and residue as well as iron ore.
Historical / Colonial Period ±1850 AD – present	Holocene	Various Bantu-speaking groups as well as European farmers, settlers and explorers	Remains of historical structures e.g. homesteads, missionary schools etc. as well as, glass, porcelain, metal and ceramics.

**4.2 The Waterberg and Western Limpopo: Specific Themes.**

The cultural landscape of the Waterberg encompasses a period of time that spans millions of years, covering human cultural development from the Stone Ages up to recent times. It depicts the interaction between the first humans and their adaptation and utilization to the environment, the migration of people, technological advances, warfare and contact and conflict. Resources, and in particular mineral resources, in what is now known as the Thabazimbi region have been extensively utilised by prehistoric and historic groups. The greater region has several important Stone Age localities with deep occupation deposits and importantly, a widespread occurrence of open-air sites. The shelter site of Olieboomspoor near Lephale show a succession from the Earlier, Middle and Later Stone Ages (ESA, MSA and LSA) and up to historic times (van der Ryst 2006). Early Iron Age (EIA) localities such as Diamant are particular important. At this locality in the western Waterberg the EIA facies of Diamant was first identified at the eponymous locality (Huffman 1990). This site has also delivered the earliest evidence for glass trade beads and domesticated dogs in the Limpopo Province (van der Ryst 2006). The movement of African farmers into this region is documented by their ceramics and settlements (Huffman 2007b). The later occupations of agropastoralists groups are complex (Schapera 1942, 1965; Breutz 1953, 1989; Bergh 1998). The accounts of early travellers provide important data on the fauna, flora and inhabitants of the Waterberg. The observations of travellers, missionaries and hunters who traversed the region throughout the 18th and the 19th centuries constitute a source of implicit ethnography on the late presence of hunting and gathering groups, the African farmers and incoming colonists (Baines 1872, 1877; Smith 1836; Schlömann 1896; Wallis [Baines] 1946; Burke [Mauch’s journals] 1969). The region is also rich in rock art (Eastwood and Eastwood 2006).

**4.2.1 Early History and the Stone Ages**

According to archaeological research, the earliest ancestors of modern humans emerged some two to three million years ago. The remains of Australopithecine and *Homo habilis* have been found in dolomite caves and underground dwellings in the Bankeveld at places such as Sterkfontein and Swartkrans near Krugersdorp. *Homo habilis*, one of the Early Stone Age hominids, is associated with Oldowan artefacts, which include crude implements manufactured from large pebbles. The Acheulian industrial complex replaced the Oldowan industrial complex during the Early Stone Age. This phase of human existence was widely distributed across South Africa and is associated with *Homo erectus*, who manufactured hand axes and cleavers from as early as one and a half million years ago. Oldowan and Acheulian artefacts were also found four to five decades ago in some of the older gravels (ancient river beds and terraces) of the Vaal River and the Klip River in Vereeniging. The earliest ancestors of modern man may therefore have roamed the Vaal valley at the same time that their contemporaries occupied some of the dolomite caves near Krugersdorp. Middle Stone Age sites dating from as early as two hundred thousand years ago have been found all over South Africa. Middle Stone Age hunter-gatherer bands also lived and hunted in the Orange and Vaal River valleys. These people, who probably looked like modern humans, occupied campsites near water but also used caves as dwellings. They manufactured a wide range of stone tools, including blades and points that may have had long wooden sticks as hafts and were used as spears. The Late Stone Age



commenced twenty thousand years ago or somewhat earlier. The various types of Later Stone Age industries scattered across the country are associated with the historical San and Khoi-Khoi people. The San were renowned as formidable hunter-gatherers, while the Khoi-Khoi herded cattle and small stock during the last two thousand years. Late Stone Age people manufactured tools that were small but highly effective, such as arrow heads and knives.

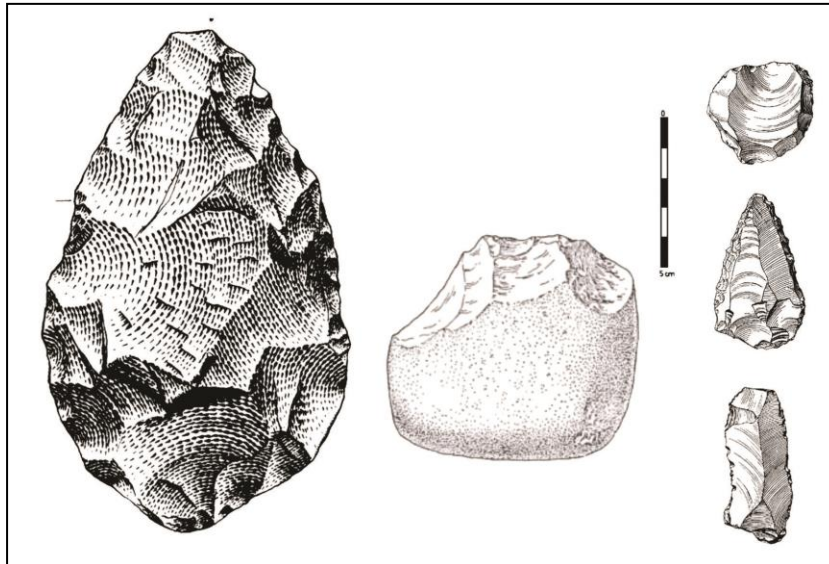


Figure 4-1: Typical ESA handaxe (left) and cleaver (center). To the right is a MSA scraper (right, top), point (right, middle) and blade (right, bottom).

The cultural historical landscape of the Waterberg area spans million years with evidence of hominin occupation, Stone Age traditions, Iron Age farmers and historical events. Makapansgat, a deep limestone cave near Mokopane has yielded remains of *Australopithecus africanus* that dates to more than 3 million years BP and also *Homo erectus*, dating to approximately 1 million years BP. However, Earlier Stone Age (ESA) material is scarce on the Waterberg plateau. The Middle Stone Age (MSA) is abundantly represented in the Waterberg area and archaeological excavations at sites such as the Olieboomspoor Shelter in the north-western part of the Waterberg have yielded rich MSA deposits which display a large degree of specialisation and skill in stone working (Van der Ryst 1996). These groups occupied open camps which were situated in the proximity of water sources such as pans, lakes or rivers. There is a noticeable gap in the Waterberg between MSA assemblages and material from the Later Stone Age (LSA), suggesting that the Waterberg may not have seen dense human occupation for a long period of time. However, Later Stone Age groups, including the San hunter gatherers and Khoi herders frequented the area in the last few millennia, and numerous LSA sites have been discovered and excavated. Similarly, LSA evidence such as stone implements, ceramics and a wealth of rock paintings and markings are scattered over the plateau.

#### 4.2.2 Iron Age / Farmer Period

The beginnings of the Iron Age (Farmer Period) in Southern Africa are associated with the arrival of a new Bantu speaking population group at around the third century AD. These newcomers introduced a new way of life into areas that were occupied by Later Stone Age hunter-gatherers and Khoekhoe herders. Distinctive features of the Iron Age are a settled village life, food production (agriculture and animal husbandry), metallurgy (the mining, smelting and working of iron, copper and gold) and the manufacture of pottery. Iron Age people moved into Southern Africa by c. AD 200, entering the area either by moving down the coastal plains, or by using a more central route. From the coast they followed the various rivers inland. Being cultivators, they preferred rich alluvial soils. The Iron Age can be divided into three phases. The

Early Iron Age includes the majority of the first millennium A.D. and is characterised by traditions such as Happy Rest and Silver Leaves. The Middle Iron Age spans the 10th to the 13th Centuries A.D. and includes such well known cultures as those at K2 and Mapungubwe. The Late Iron Age is taken to stretch from the 14th Century up to the colonial period and includes traditions such as Icon and Letaba.

**Early Sotho-Tswana History**

Within a larger archaeological context, Iron Age settlement representations in the form of stone walling in the Waterberg can undoubtedly be traced back to ancestral Sotho-Tswana occupation and developments from the sixteenth century AD onwards. Diagnostic pottery assemblages are commonly used in the South African Iron Age to infer group identities and to trace movements across the landscape. Similarly, the migration of the Sotho-Tswana speakers in South Africa in the 16<sup>th</sup> century marked a new ceramic style, known as Moloko. The Moloko Tradition can be divided into two phases: an early phase (e.g. Icon) in which sites were usually located at the foot of hills and contained little or no stone walling; and a later phase characterised by extensive stone wall complexes which were often erected on hills. In the Waterberg area, this later phase manifested in the Madikwe ceramic facies with pottery typically displaying stab and fingernail impression decoration motives. At around the 17<sup>th</sup> century, Madikwe pottery developed into a tradition known as “Buispoort”, sites of which display complex and elaborate stone walling. The stone walls were erected to construct stock byres and to demarcate residential units where pole-and-dagha (clay) huts were placed.

In addition, various Sotho-Tswana groups were found in the interior of the Highveld areas of South Africa by the end of the 18<sup>th</sup> century. These units occupied a large area, from present-day Botswana across large sections of the old Transvaal, the Free State Province into the Northern Cape. Based on Sotho-Tswana oral histories various groups acted as cores from which the Sotho-speaking communities sprouted

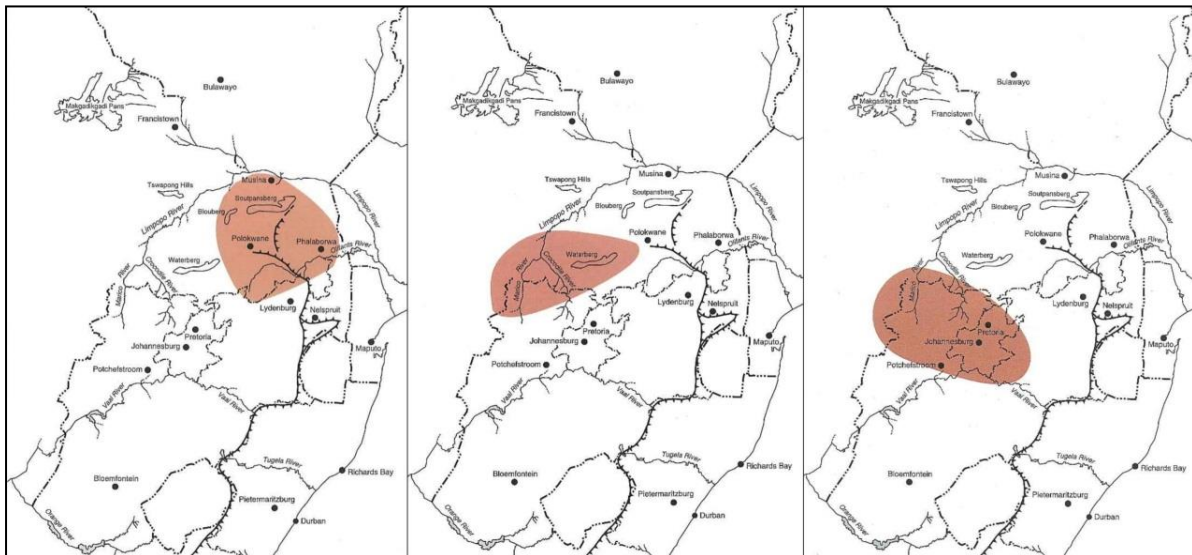


Figure 4-2: Map detailing the distribution of 16<sup>th</sup> century Maloko (left), 17<sup>th</sup> century Madikwe (centre) and 18<sup>th</sup> century Buispoort tradition sites (After Huffman 2007).



Figure 4-3: Ceramic decoration motives typical of 17<sup>th</sup> century Madikwe (left) and later Buispoort (right) facies (After Huffman 2007).

#### 4.2.3 Rock Art of the Waterberg Landscape

The Waterberg Plateau is rich in rock art and rock markings and many such sites are still to be described and studied. At many sites “refined” San paintings occur with cruder depictions in red or white paint (sometimes black), painted directly with fingers by later Farmer groups. Numerous paintings of people in trance positions, dance scenes of men and women, men with hunting equipment, a large variety of antelope and other animals, imaginary rain animals, handprints, and geometric designs form part of the contents of the rock art of the Waterberg (Van der Ryst 1998). Two traditions of Rock Art occur in the Waterberg. First the more “naturalised” form of fine-line art, including skilled depictions of animals and people, attributed to San Hunter Gatherers. The second tradition, often called “Late White” art, is characterised by more geometric, schematic illustrations which includes a large amount of finger painting. This tradition is associated with Iron Age farmers.

#### 4.2.4 Pastoralism and the last 2000 years

Until 2000 years ago, hunter-gatherer communities traded, exchanged goods, encountered and interacted with other hunter-gatherer communities. From about 2000 years ago the social dynamics of the Southern African landscape started changing with the immigration of two ‘other’ groups of people, different in physique, political, economic and social systems, beliefs and rituals. One of these groups, the Khoekhoe pastoralists or herders entered Southern Africa with domestic animals, namely fat-tailed sheep and goats, travelling through the south towards the coast. They also introduced thin-walled pottery common in the interior and along the coastal regions of Southern Africa. Their economic systems were directed by the accumulation of wealth in domestic stock numbers and their political make-up was more hierarchical than that of the hunter-gatherers.

#### 4.2.5 Later History

The Historical period in Southern Africa encompasses the course of Europe's discovery of South Africa and the spreading of European settlements along the East Coast and subsequently into the interior. In addition, the formation stages of this period are marked by the large scale movements of various Bantu-speaking groups in the interior of South Africa, which profoundly influenced the course of European settlement. Finally, the final retreat of the San and Khoekhoe groups into their present-day living areas also occurred in the Historical period in Southern Africa.

The Waterberg was considered remote and inaccessible by early white migrants from the south and, with the exception of a few hunting and trading expeditions passing through, the area was one of the last regions in the former Transvaal to be permanently occupied by white farmers. Although the first Voortrekker farmers moved into the Waterberg during the 1850's, the region has been increasingly occupied on a regular basis only since the early part of the twentieth century. The early historical period of the area is dominated by the siege of Makapansgat where in September 1854, Chief Makapane and over 1 500 of his people died of hunger, dehydration and injuries after being besieged in the cave by a Boer commando in retaliation for an attack on a Voortrekker settlement. The majority of farms in the Waterberg area were surveyed in the late 1860's as part of the Transvaal government's strategy to settle white farmers in the Waterberg region. At that time, access to the Waterberg plateau was circuitous and difficult with the shortest route extending via Sandrivierspoort near present-day Vaalwater. After a railway line to Vaalwater was completed in the 1920's, maize became an economically viable crop but by the end of the 1960's, slumps in maize prices resulted in many farmers abandoning crop farming in favour of cattle. Large scale iron ore mining has emerged to become a primary economical enterprise in recent years. However, farming communities have settled in the landscape at the beginning of the 20<sup>th</sup> century.

The farms Rooipan 357LQ and Zandfontein 382LQ in the Waterberg District were established in 1868 and the current Transnet railway line was constructed across these and other properties in 1980.

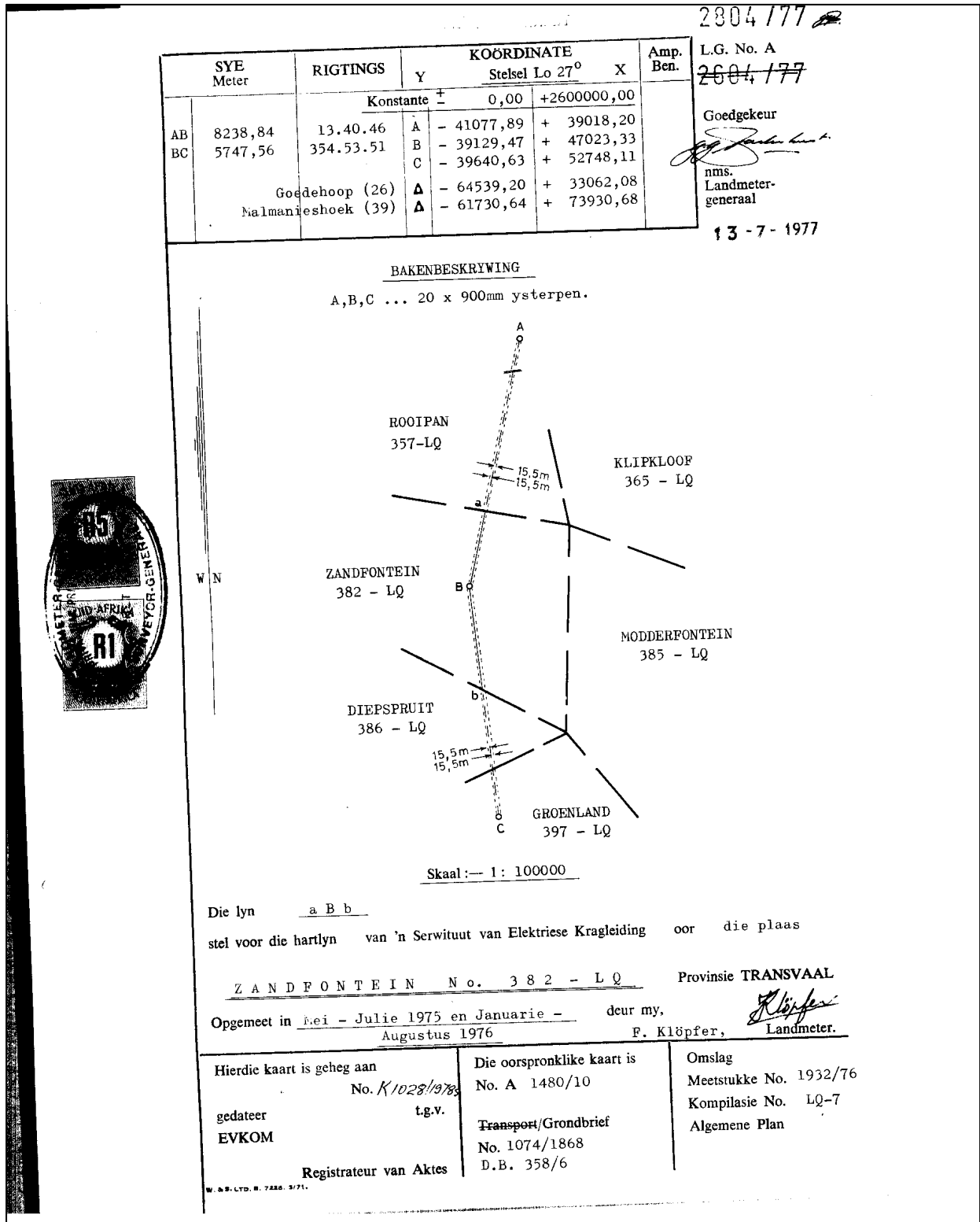


Figure 4-4: Title deed document for the farm Zandfontein (originally established in 1868) as updated in 1976 to provide for the construction of a power line. Note the absence of the Transnet railway line at this time.

## 5 RESULTS: ARCHAEOLOGICAL SURVEY

---

In terms of heritage resources, the general landscape around the project area is primarily well known for its Iron Age and Historical Period occurrences. Locally, the project area occurs within the exiting railway servitude in largely transformed and disturbed areas and no heritage remains or sites were located in the Transnet Diepspruit Railway Loop Project area.

### 5.1 The Stone Age

Stone Age material generally occurs along drainage lines and exposed surfaces in the landscape. During the site survey no Stone Age occurrences were documented.

### 5.2 The Iron Age Farmer Period

A frontier zone between the east and the west, the Northern Limpopo landscape holds vast amounts of Iron Age (Farmer period) remnants but no Farmer Period occurrences were noted in the project area.

### 5.3 Historical / Colonial Period and recent times

Lephalale and its surroundings have a long and extensive Colonial Period settlement history. From around the first half of the 19<sup>th</sup> century, the area was frequented by explorers, missionaries and farmers who all contributed to a recent history of contact and conflict. The remnants of recent occupation and mining are scattered across the landscape but no Historical / Colonial Period occurrences were observed in the project areas. In terms of the built environment, the project area has no significance, as there are no old buildings, structures, or features, old equipment, public memorial or monuments in the footprint areas.

### 5.4 Graves

No graves of human burial places were noted during the site investigation. In the rural areas of the Limpopo Province graves and cemeteries often occur within settlements or around homesteads but they are also randomly scattered around archaeological and historical settlements. The probability of informal human burials encountered during development should thus not be excluded. Should any unmarked human burials/remains be found during the course of construction, work in the immediate vicinity should cease and the find must immediately be reported to the archaeologist, or the South African Heritage Resources Agency (SAHRA). Under no circumstances may burials be disturbed or removed until such time as necessary statutory procedures required for grave relocation have been met.

## 6 RESULTS: STATEMENT OF SIGNIFICANCE AND IMPACT RATING

---

### 6.1 Potential Impacts and Significance Ratings<sup>2</sup>

The following section provides a background to the identification and assessment of possible impacts and alternatives, as well as a range of risk situations and scenarios commonly associated with heritage resources management. A guideline for the rating of impacts and recommendation of management actions for areas of heritage potential within the study area is supplied in Section 10.2 of the Addendum.

#### 6.1.1 General assessment of impacts on resources

Generally, the value and significance of archaeological and other heritage sites might be impacted on by any activity that would result immediately or in the future in the destruction, damage, excavation, alteration, removal or collection from its original position, any archaeological material or object (as

---

<sup>2</sup> Based on: Winter, S. & Baumann, N. 2005. *Guideline for involving heritage specialists in EIA processes: Edition 1.*



indicated in the National Heritage Resources Act (No 25 of 1999)). Thus, the destructive impacts that are possible in terms of heritage resources would tend to be direct, once-off events occurring during the initial construction period. However, in the long run, the proximity of operations in any given area could result in secondary indirect impacts. The EIA process therefore specifies impact assessment criteria which can be utilised from the perspective of a heritage specialist study which elucidates the overall extent of impacts.

#### 6.1.2 Direct impact rating

**Direct or primary effects** on heritage resources occur at the same time and in the same space as the activity, e.g. loss of historical fabric through demolition work. **Indirect effects or secondary effects** on heritage resources occur later in time or at a different place from the causal activity, or as a result of a complex pathway, e.g. restriction of access to a heritage resource resulting in the gradual erosion of its significance, which is dependent on ritual patterns of access (refer to Section 10.3 in the Addendum for an outline of the relationship between the significance of a heritage context, the intensity of development and the significance of heritage impacts to be expected).

*No heritage receptors were found in the project area and no potential impact to heritage resources is foreseen.*

#### 6.1.3 Discussion: Evaluation of Results and Impacts

Previous studies conducted in the Western Limpopo Province and the Waterberg suggest a rich and diverse archaeological landscape. Generally, the area is highly suitable for pre-colonial habitation and, even though the project area contains no visible tangible heritage remains, the probability of exposing archaeological remains that might be present in surface and sub-surface deposits along drainage lines and in pristine areas during development should not be excluded.

#### 6.1.4 Archaeology

The study did not identify any archaeological receptors which will be directly impacted by the proposed project and no impact on archaeological sites or features is anticipated.

#### 6.1.5 Built Environment

The existing Transnet railway line and associated structures such as culverts were constructed in 1980. As such, the study identified no buildings or structures of historical or heritage significance. For the rest of the project area, the general landscape holds varied significance in terms of the built environment as the area comprises historical farming remnants and relatively newly established industrial zones, settlements and townlands. However, no impact on built environment sites is anticipated.

#### 6.1.6 Cultural Landscape

Generally, the proposed project area and its surrounds are characterised by open fields and farmlands. Further away from the project area, the landscape is typical of the rural north Limpopo with undulating hills with flatter plains in-between. This landscape stretches over many kilometres and the proposed project is unlikely to result in a significant impact on the landscape.

#### 6.1.7 Graves / Human Burials Sites

No human burials were documented in the project area and no impact on human remains is foreseen. In the rural areas of the Limpopo Province graves and cemeteries sometimes occur within settlements or around homesteads but they are also randomly scattered around archaeological and historical settlements. The probability of additional and informal human burials encountered during development should thus not

be excluded. In addition, human remains and burials are commonly found close to archaeological sites; they may be found in "lost" graveyards, or occur sporadically anywhere as a result of prehistoric activity, victims of conflict or crime. It is often difficult to detect the presence of archaeological human remains on the landscape as these burials, in most cases, are not marked at the surface.

Human remains are usually observed when they are exposed through erosion. In some instances packed stones or rocks may indicate the presence of informal pre-colonial burials. If any human bones are found during the course of construction work then they should be reported to an archaeologist and work in the immediate vicinity should cease until the appropriate actions have been carried out by the archaeologist. Where human remains are part of a burial they would need to be exhumed under a permit from SAHRA (for pre-colonial burials as well as burials later than about AD 1500). Should any unmarked human burials/remains be found during the course of construction, work in the immediate vicinity should cease and the find must immediately be reported to the archaeologist, or the South African Heritage Resources Agency (SAHRA). Under no circumstances may burials be disturbed or removed until such time as necessary statutory procedures required for grave relocation have been met

***No heritage resources were noted in the proposed Transnet Diepspruit Railway Loop Project footprint and no impact the heritage landscape is anticipated. In the opinion of the author of this Archaeological Impact Assessment Report, the proposed project should proceed from a culture resources management perspective, provided that previously undetected heritage remains are encountered during construction and development.***

**6.2 Management actions**

Recommendations for relevant heritage resources management actions are vital to the conservation of heritage resources. A general guideline for recommended management actions is included in Section 10.4 of the Addendum.

**OBJECTIVE:** prevent unnecessary disturbance and/or destruction of previously undetected heritage receptors.

*No specific mitigation measures in terms of further heritage resources management are required for the Transnet Diepspruit Railway Loop Project. However the following general recommendations should be considered:*

<b>PROJECT COMPONENT/S</b>	All phases of construction and operation.		
<b>POTENTIAL IMPACT</b>	Damage/destruction of sites.		
<b>ACTIVITY RISK/SOURCE</b>	Digging foundations and trenches into sensitive deposits that are not visible at the surface.		
<b>MITIGATION: TARGET/OBJECTIVE</b>	To locate previously undetected heritage remains / graves as soon as possible after disturbance so as to maximize the chances of successful rescue/mitigation work.		
<b>MITIGATION: ACTION/CONTROL</b>	<b>RESPONSIBILITY</b>	<b>TIMEFRAME</b>	
Fixed Mitigation Procedure (required)			
<b>Site Monitoring:</b> Regular examination of trenches and excavations.	ECO	Monitor as frequently as practically possible.	



<b>PERFORMANCE INDICATOR</b>	Archaeological sites are discovered and mitigated with the minimum amount of unnecessary disturbance.
<b>MONITORING</b>	Successful location of sites by person/s monitoring.

## 7 RECOMMENDATIONS

The larger landscape of the Northern Limpopo is rich in pre-historical and historical remnants since the area is highly suitable for pre-colonial habitation. However, the project area contains no visible tangible heritage remains as no sites or features of heritage potential were located in the proposed project area. The following general recommendations are made based on general observations at the site.

- Considering the localised nature of heritage remains, the general monitoring of the development progress by an ECO is recommended for all stages of the project. Should any subsurface palaeontological, archaeological or historical material, or burials be exposed during construction activities, all activities should be suspended and the archaeological specialist should be notified immediately

It is essential that cognisance be taken of the larger archaeological landscape of the area in order to avoid the destruction of previously undetected heritage sites. It should be stated that the possibility of undetected archaeological remains occurring elsewhere in the project area should not be excluded. Burials and historically significant structures dating to the Colonial Period occur on farms in the area and these resources should be avoided during all phases of construction and development, including the operational phases of the development.

- Since the intrinsic heritage and social value of graves and cemeteries are highly significant, these resources require special management measures. Should human remains be discovered at any stage, these should be reported to the Heritage Specialist and relevant authorities (SAHRA) and development activities should be suspended until the site has been inspected by the Specialist. The Specialist will advise on further management actions and possible relocation of human remains in accordance with the Human Tissue Act (Act 65 of 1983 as amended), the Removal of Graves and Dead Bodies Ordinance (Ordinance no. 7 of 1925), the National Heritage Resources Act (Act no. 25 of 1999) and any local and regional provisions, laws and by-laws pertaining to human remains. A full social consultation process should occur in conjunction with the mitigation of cemeteries and burials.

In addition to these site-specific recommendations, careful cognizance should be taken of the following:

- As Palaeontological remains occur where bedrock has been exposed, all geological features should be regarded as sensitive.
- Water sources such as drainage lines, fountains and pans would often have attracted human activity in the past. As Stone Age material the larger landscape should be regarded as potentially sensitive in terms of possible subsurface deposits.

## 8 GENERAL COMMENTS AND CONDITIONS

This AIA report serves to confirm the extent and significance of the heritage landscape of the proposed Transnet Diepspruit Railway Loop Project area. The larger heritage horizon encompasses rich and diverse archaeological landscapes and cognisance should be taken of heritage resources and archaeological material that might be present in surface and sub-surface deposits. If, during construction, any possible

archaeological material culture discoveries are made, the operations must be stopped and a qualified archaeologist be contacted for an assessment of the find. Such material culture might include:

- Formal Earlier Stone Age stone tools.
- Formal MSA stone tools.
- Formal LSA stone tools.
- Potsherds
- Iron objects.
- Beads made from ostrich eggshell and glass.
- Ash middens and cattle dung deposits and accumulations.
- Faunal remains.
- Human remains/graves.
- Stone walling or any sub-surface structures.
- Historical glass, tin or ceramics.
- Fossils.

If such site were to be encountered or impacted by any proposed developments, recommendations contained in this report, as well as endorsement of mitigation measures as set out by AMAFA, SAHRA, the National Resources Act and the CRM section of ASAPA will be required.

It must be emphasised that the conclusions and recommendations expressed in this archaeological heritage sensitivity investigation are based on the visibility of archaeological sites/features and may not therefore, represent the area's complete archaeological legacy. Many sites/features may be covered by soil and vegetation and might only be located during sub-surface investigations. If subsurface archaeological deposits, artefacts or skeletal material were to be recovered in the area during construction activities, all activities should be suspended and the archaeological specialist should be notified immediately (**cf. NHRA (Act No. 25 of 1999), Section 36 (6)**). It must also be clear that Archaeological Specialist Reports will be assessed by the relevant heritage resources authority (SAHRA).

## 9 BIBLIOGRAPHY

---

### 9.1 Published Literature

- Acocks, J.P.H. 1988. Veld types of South Africa (3<sup>rd</sup> edition). Memoirs of the Botanical Survey of South Africa 57: 1-146
- Bergh, J.S. 1999. Geskiedenisatlas van Suid-Afrika: die vier noordelike provinsies. Pretoria: J.L. van Schaik.
- Breul, H. 1948. The Earlier Stone Age or Old Palaeolithic Industries in the Vaal River Basin. Archaeological Survey. Archaeological Series No. VI:8-18.
- Childs, S.T & Killich, D.1993. Indigenous African Metallurgy Nature and Culture. Annual Review of Anthropology: 22 (317-337)
- Deacon, H.J. 1970. The Acheulian Occupation at Amanzi Springs Uitenhage District, Cape Province. Cape provincial museums at the Albany Museum
- Deacon, J. 1996. Archaeology for Planners, Developers and Local Authorities. National Monuments Council. Publication no. P021E.
- Deacon, J.1997. Report: Workshop on Standards for the Assessment of Significance and Research Priorities for Contract Archaeology. In: Newsletter No 49, Sept 1998. Association for Southern African Archaeologists.
- Denbow, J.R. 1979. Cenchrus ciliaris: an ecological indicator of Iron Age middens using aerial photography in eastern Botswana. South African Journal of Science 75:405—408
- Esterhuysen, A., 2007. The Earlier Stone Age. In Bonner, P., Esterhuysen, A., Jenkins, T. (eds.): A Search for Origins: Science, History and South Africa's 'Cradle of Humankind'. Johannesburg: Wits University Press. Pg 110 -121.
- Evers, T.M.1988. The recognition of Groups in the Iron Age of Southern Africa. PhD thesis. Johannesburg: University of the Witwatersrand.
- Hall, M. 1987. The Changing Past: Farmers, Kings & Traders in Southern Africa 200 – 1860 Cape Town, Johannesburg: David Philip
- Hamilton, C. (Ed.) 1995. The Mfecane Aftermath. Johannesburg: Wits U.P.
- Huffman, T.N. 2007. Handbook to the Iron Age. Pietermaritzburg: University of Kwazulu-Natal Press
- Maggs, T.M.O. 1976. Iron Age Communities of the Southern Highveld. Pietermaritzburg: University of Natal Press.
- Mitchell, P. 2002. The Archaeology of Southern Africa. Cambridge Africa Collection. Cambridge: Cambridge University Press.
- Raper, P.E. 2004. South African place names. Johannesburg: Jonathan Ball Publishers

Swanepoel, N. et al (Eds.) 2008. Five hundred years rediscovered. Johannesburg: Wits University Press

Van der Ryst, M.M. 2006. 'Seeking Shelter: Hunter-Gatherer-Fishers of Olieboomspoor, Limpopo, South Africa.' PhD diss., University of the Witwatersrand.

Van Warmelo, N.J. 1935. A Preliminary Survey of the Bantu Tribes of South Africa. Ethnographic Publications No. 5. Pretoria: Government Printer.

## 9.2 Unpublished Sources and Reports

Fourie, W. 2012. Wachteenbietjesdraai 350 KQaAnd Kwaggashoek 345 KQ Heritage Impact Report on proposed mining activities of Project Phoenix. PGS Heritage Consultants

Fourie, W. 2014. Steenbokpan Township Development. Proposed Development of the Steenbokpan Extension 3 Township on the Remainder and Portions 1, 2, 3 and 4 of the Farm Grootdoorn 292 LQ, Portions 20, 22 and 25 of the Farm Theunispan 293 LQ and Portion 3 of the Farm Steenbokpan 295 LQ at Steenbokpan, west of Lephalale in the Lephalale Local Municipality, Waterberg District, Limpopo Province. Client: Flexilor Properties (Pty) Ltd . PGS Heritage Consultants

Hutten, M. 2010. Heritage Impact Assessment for the proposed De Put Residential Township Development south of Northam, Limpopo Province

Pistorius, J.C.C. 2007. A Phase 1 Heritage Impact Assessment Study for ESKOM's proposed new 400kV Power Line route between the Matimba B Power Station and the Marang Substation near Rustenburg. Pretoria.

Van Schalkwyk, J.A. 1994. A survey of archaeological and cultural historical resources in the Amandelbult mining lease area. Unpublished report 94KH03. Pretoria: National Cultural History Museum.

Van Schalkwyk, J.A. 2001. A survey of cultural resources in two development areas, Amandelbult, Northern Province. Unpublished report 2001KH13. Pretoria: National Cultural History Museum.

Van Schalkwyk, J.A. 2003. A survey of archaeological sites for the Amandelbult Platinum Mine Seismic exploration program. Unpublished report 2003KH16. Pretoria: National Cultural History Museum.

Van Schalkwyk, J.A. 2004. Heritage impact report for the Amandelbult electricity sub-transmission lines, Amandelbult Platinum Mine, Limpopo Province. Unpublished report 2004KH32. Pretoria: National Cultural History Museum.

Van Schalkwyk, J. 2007. Survey of heritage resources in the location of the proposed Merensky Mining Project, Amandelbult Section, Rustenburg Platinum Mine, Limpopo Province. Prepared For WSP Environmental.

Van Vollenhoven, A. July 2013. A Report on a Cultural Heritage Impact Assessment for the Continental Limestone Mine, close to Thabazimbi, Limpopo Province.

### 9.3 Web Sources and Legislation

*Human Tissue Act and Ordinance 7 of 1925, Government Gazette, Cape Town*

*National Resource Act No.25 of 1999, Government Gazette, Cape Town*

*SAHRA, 2005. Minimum Standards for the Archaeological and the Palaeontological Components of Impact Assessment Reports, Draft version 1.4.*

[www.sahra.org.za/sahris](http://www.sahra.org.za/sahris)

Accessed 2018-03-28

<http://csg.dla.gov.za/index.html>

Accessed 2018-03-28

## 10 ADDENDUM 1: HERITAGE LEGISLATION BACKGROUND

---

### 10.1 CRM: Legislation, Conservation and Heritage Management

The broad generic term *Cultural Heritage Resources* refers to any physical and spiritual property associated with past and present human use or occupation of the environment, cultural activities and history. The term includes sites, structures, places, natural features and material of palaeontological, archaeological, historical, aesthetic, scientific, architectural, religious, symbolic or traditional importance to specific individuals or groups, traditional systems of cultural practice, belief or social interaction.

#### 10.1.1 Legislation regarding archaeology and heritage sites

The South African Heritage Resources Agency (SAHRA) and their provincial offices aim to conserve and control the management, research, alteration and destruction of cultural resources of South Africa. It is therefore vitally important to adhere to heritage resource legislation at all times.

##### d. National Heritage Resources Act No 25 of 1999, section 35

According to the National Heritage Resources Act of 1999 a historical site is any identifiable building or part thereof, marker, milestone, gravestone, landmark or tell older than 60 years. This clause is commonly known as the "60-years clause". Buildings are amongst the most enduring features of human occupation, and this definition therefore includes all buildings older than 60 years, modern architecture as well as ruins, fortifications and Iron Age settlements. "Tell" refers to the evidence of human existence which is no longer above ground level, such as building foundations and buried remains of settlements (including artefacts).

The Act identifies heritage objects as:

- objects recovered from the soil or waters of South Africa including archaeological and palaeontological objects, meteorites and rare geological specimens
- visual art objects
- military objects
- numismatic objects
- objects of cultural and historical significance
- objects to which oral traditions are attached and which are associated with living heritage
- objects of scientific or technological interest
- any other prescribed category

With regards to activities and work on archaeological and heritage sites this Act states that:

*"No person may alter or demolish any structure or part of a structure which is older than 60 years without a permit by the relevant provincial heritage resources authority." (34. [1] 1999:58)*

and

*"No person may, without a permit issued by the responsible heritage resources authority-*

- (d) *destroy, damage, excavate, alter, deface or otherwise disturb any archaeological or palaeontological site or any meteorite;*
- (e) *destroy, damage, excavate, remove from its original position, collect or own any archaeological or palaeontological material or object or any meteorite;*

- (f) *trade in, sell for private gain, export or attempt to export from the Republic any category of archaeological or palaeontological material or object, or any meteorite; or*
- (g) *bring onto or use at an archaeological or palaeontological site any excavation equipment or any equipment which assist in the detection or recovery of metals or archaeological and palaeontological material or objects, or use such equipment for the recovery of meteorites. (35. [4] 1999:58)."*

and

*"No person may, without a permit issued by SAHRA or a provincial heritage resources agency-*

- (h) *destroy, damage, alter, exhume or remove from its original position or otherwise disturb the grave of a victim of conflict, or any burial ground or part thereof which contains such graves;*
- (i) *destroy, damage, alter, exhume, remove from its original position or otherwise disturb any grave or burial ground older than 60 years which is situated outside a formal cemetery administered by a local authority;*
- (j) *bring onto or use at a burial ground or grave referred to in paragraph (a) or (b) and excavation equipment, or any equipment which assists in the detection or recovery of metals (36. [3] 1999:60)."*

#### **e. Human Tissue Act of 1983 and Ordinance on the Removal of Graves and Dead Bodies of 1925**

Graves 60 years or older are heritage resources and fall under the jurisdiction of both the National Heritage Resources Act and the Human Tissues Act of 1983. However, graves younger than 60 years are specifically protected by the Human Tissues Act (Act 65 of 1983) and the Ordinance on the Removal of Graves and Dead Bodies (Ordinance 7 of 1925) as well as any local and regional provisions, laws and by-laws. Such burial places also fall under the jurisdiction of the National Department of Health and the Provincial Health Departments. Approval for the exhumation and re-burial must be obtained from the relevant Provincial MEC as well as the relevant Local Authorities.

#### **10.1.2 Background to HIA and AIA Studies**

South Africa's unique and non-renewable archaeological and palaeontological heritage sites are 'generally' protected in terms of the National Heritage Resources Act (Act No 25 of 1999, section 35) and may not be disturbed at all without a permit from the relevant heritage resources authority. Heritage sites are frequently threatened by development projects and both the environmental and heritage legislation require impact assessments (HIAs & AIAs) that identify all heritage resources in areas to be developed. Particularly, these assessments are required to make recommendations for protection or mitigation of the impact of the sites. HIAs and AIAs should be done by qualified professionals with adequate knowledge to (a) identify all heritage resources including archaeological and palaeontological sites that might occur in areas of developed and (b) make recommendations for protection or mitigation of the impact on the sites.

The National Heritage Resources Act (Act No. 25 of 1999, section 38) provides guidelines for Cultural Resources Management and prospective developments:

*"38. (1) Subject to the provisions of subsections (7), (8) and (9), any person who intends to undertake a*

*development categorised as:*

- (a) the construction of a road, wall, powerline, pipeline, canal or other similar form of linear development or barrier exceeding 300m in length;*
- (b) the construction of a bridge or similar structure exceeding 50m in length;*
- (c) any development or other activity which will change the character of a site:*
  - (i) exceeding 5 000 m<sup>2</sup> in extent; or*
  - (ii) involving three or more existing erven or subdivisions thereof; or*
  - (iii) involving three or more erven or divisions thereof which have been consolidated within the past five years; or*
  - (iv) the costs of which will exceed a sum set in terms of regulations by SAHRA or a provincial heritage resources authority;*
- (d) the re-zoning of a site exceeding 10 000 m<sup>2</sup> in extent; or*
- (e) any other category of development provided for in regulations by SAHRA or a provincial heritage resources authority,*

*must at the very earliest stages of initiating such a development, notify the responsible heritage resources authority and furnish it with details regarding the location, nature and extent of the proposed development."*

And:

*"The responsible heritage resources authority must specify the information to be provided in a report required in terms of subsection (2)(a): Provided that the following must be included:*

- (k) The identification and mapping of all heritage resources in the area affected;*
- (l) an assessment of the significance of such resources in terms of the heritage assessment criteria set out in section 6(2) or prescribed under section 7;*
- (m) an assessment of the impact of the development on such heritage resources;*
- (n) an evaluation of the impact of the development on heritage resources relative to the sustainable social and economic benefits to be derived from the development;*
- (o) the results of consultation with communities affected by the proposed development and other interested parties regarding the impact of the development on heritage resources;*
- (p) if heritage resources will be adversely affected by the proposed development, the consideration of alternatives; and*
- (q) plans for mitigation of any adverse effects during and after the completion of the proposed development (38. [3] 1999:64)."*

**Consequently, section 35 of the Act requires Heritage Impact Assessments (HIAs) or Archaeological Impact Assessments (AIAs) to be done for such developments in order for all heritage resources, that is, all places or objects of aesthetics, architectural, historic, scientific, social, spiritual, linguistic or technological value or significance to be protected. Thus any assessment should make provision for the**



**protection of all these heritage components, including archaeology, shipwrecks, battlefields, graves, and structures older than 60 years, living heritage, historical settlements, landscapes, geological sites, palaeontological sites and objects. Heritage resources management and conservation**

## 10.2 Assessing the Significance of Heritage Resources

Archaeological sites, as previously defined in the National Heritage Resources Act (Act 25 of 1999) are places in the landscape where people have lived in the past – generally more than 60 years ago – and have left traces of their presence behind. In South Africa, archaeological sites include hominid fossil sites, places where people of the Earlier, Middle and Later Stone Age lived in open sites, river gravels, rock shelters and caves, Iron Age sites, graves, and a variety of historical sites and structures in rural areas, towns and cities. Palaeontological sites are those with fossil remains of plants and animals where people were not involved in the accumulation of the deposits. The basic principle of cultural heritage conservation is that archaeological and other heritage sites are valuable, scarce and *non-renewable*. Many such sites are unfortunately lost on a daily basis through development for housing, roads and infrastructure and once archaeological sites are damaged, they cannot be re-created as site integrity and authenticity is permanently lost. Archaeological sites have the potential to contribute to our understanding of the history of the region and of our country and continent. By preserving links with our past, we may not be able to revive lost cultural traditions, but it enables us to appreciate the role they have played in the history of our country.

### - Categories of significance

Rating the significance of archaeological sites, and consequently grading the potential impact on the resources is linked to the significance of the site itself. The significance of an archaeological site is based on the amount of deposit, the integrity of the context, the kind of deposit and the potential to help answer present research questions. Historical structures are defined by Section 34 of the National Heritage Resources Act, 1999, while other historical and cultural significant sites, places and features, are generally determined by community preferences. The guidelines as provided by the NHRA (Act No. 25 of 1999) in Section 3, with special reference to subsection 3 are used when determining the cultural significance or other special value of archaeological or historical sites. In addition, ICOMOS (the Australian Committee of the International Council on Monuments and Sites) highlights four cultural attributes, which are valuable to any given culture:

#### - *Aesthetic value:*

Aesthetic value includes aspects of sensory perception for which criteria can and should be stated. Such criteria include consideration of the form, scale, colour, texture and material of the fabric, the general atmosphere associated with the place and its uses and also the aesthetic values commonly assessed in the analysis of landscapes and townscape.

#### - *Historic value:*

Historic value encompasses the history of aesthetics, science and society and therefore to a large extent underlies all of the attributes discussed here. Usually a place has historical value because of some kind of influence by an event, person, phase or activity.

#### - *Scientific value:*

The scientific or research value of a place will depend upon the importance of the data involved, on its rarity, quality and on the degree to which the place may contribute further substantial information.

#### - *Social value:*

Social value includes the qualities for which a place has become a focus of spiritual, political, national or other cultural sentiment to a certain group.

It is important for heritage specialist input in the EIA process to take into account the heritage management structure set up by the NHR Act. It makes provision for a 3-tier system of management including the South Africa Heritage Resources Agency (SAHRA) at a national level, Provincial Heritage Resources Authorities (PHRAs) at a provincial and the local authority. The Act makes provision for two types or forms of protection of heritage resources; i.e. formally protected and generally protected sites:

**Formally protected sites:**

- Grade 1 or national heritage sites, which are managed by SAHRA
- Grade 2 or provincial heritage sites, which are managed by the provincial HRA (MP-PHRA).
- Grade 3 or local heritage sites.

**Generally protected sites:**

- Human burials older than 60 years.
- Archaeological and palaeontological sites.
- Shipwrecks and associated remains older than 60 years.
- Structures older than 60 years.

With reference to the evaluation of sites, the certainty of prediction is definite, unless stated otherwise and if the significance of the site is rated high, the significance of the impact will also result in a high rating. The same rule applies if the significance rating of the site is low. The significance of archaeological sites is generally ranked into the following categories.

Significance	Rating Action
No significance: sites that do not require mitigation.	None
Low significance: sites, which may require mitigation.	2a. Recording and documentation (Phase 1) of site; no further action required 2b. Controlled sampling (shovel test pits, augering), mapping and documentation (Phase 2 investigation); permit required for sampling and destruction
Medium significance: sites, which require mitigation.	3. Excavation of representative sample, C14 dating, mapping and documentation (Phase 2 investigation); permit required for sampling and destruction [including 2a & 2b]
High significance: sites, where disturbance should be avoided.	4a. Nomination for listing on Heritage Register (National, Provincial or Local) (Phase 2 & 3 investigation); site management plan; permit required if utilised for education or tourism
High significance: Graves and burial places	4b. Locate demonstrable descendants through social consulting; obtain permits from applicable legislation, ordinances and regional by-laws; exhumation and reinterment [including 2a, 2b & 3]

Furthermore, the significance of archaeological sites was based on six main criteria:

- Site integrity (i.e. primary vs. secondary context),
- Amount of deposit, range of features (e.g., stonewalling, stone tools and enclosures),
- Density of scatter (dispersed scatter),
- Social value,
- Uniqueness, and
- Potential to answer current and future research questions.

**A fundamental aspect in assessing the significance and protection status of a heritage resource is often whether or not the sustainable social and economic benefits of a proposed development outweigh the conservation issues at stake. When, for whatever reason the protection of a heritage site is not deemed necessary or practical, its research potential must be assessed and mitigated in order to gain data / information, which would otherwise be lost**

**11 ADDENDUM 2: CONVENTIONS USED TO ASSESS THE SIGNIFICANCE OF HERITAGE**

**11.1 Site Significance Matrix**

According to the NHRA, Section 2(vi) the **significance** of heritage sites and artefacts is determined by its aesthetic, architectural, historical, scientific, social, spiritual, linguistic or technical value in relation to the uniqueness, condition of preservation and research potential. It must be kept in mind that the various aspects are not mutually exclusive, and that the evaluation of any site is done with reference to any number of these. The following matrix is used for assessing the significance of each identified site/feature.

2. SITE EVALUATION			
2.1 Heritage Value (NHRA, section 2 [3])	High	Medium	Low
It has importance to the community or pattern of South Africa's history or pre-colonial history.			
It possesses unique, uncommon, rare or endangered aspects of South Africa's natural or cultural heritage.			
It has potential to yield information that will contribute to an understanding of South Africa's natural and cultural heritage.			
It is of importance in demonstrating the principle characteristics of a particular class of South Africa's natural or cultural places or objects.			
It has importance in exhibiting particular aesthetic characteristics valued by a particular community or cultural group.			
It has importance in demonstrating a high degree of creative or technical achievement at a particular period.			
It has marked or special association with a particular community or cultural group for social, cultural or spiritual reasons (sense of place).			
It has strong or special association with the life or work of a person, group or organisation of importance in the history of South Africa.			
It has significance through contributing towards the promotion of a local sociocultural identity and can be developed as a tourist destination.			
It has significance relating to the history of slavery in South Africa.			
It has importance to the wider understanding of temporal changes within cultural landscapes, settlement patterns and human occupation.			
2.2 Field Register Rating			
National/Grade 1 [should be registered, retained]			
Provincial/Grade 2 [should be registered, retained]			
Local/Grade 3A [should be registered, mitigation not advised]			
Local/Grade 3B [High significance; mitigation, partly retained]			
Generally Protected A [High/Medium significance, mitigation]			
Generally protected B [Medium significance, to be recorded]			
Generally Protected C [Low significance, no further action]			
2.3 Sphere of Significance	High	Medium	Low
International			
National			
Provincial			

Local			
Specific community			

### 11.2 Impact Assessment Criteria

The following table provides a guideline for the rating of impacts and recommendation of management actions for sites of heritage potential.

**Significance of the heritage resource**

This is a statement of the nature and degree of significance of the heritage resource being affected by the activity. From a heritage management perspective it is useful to distinguish between whether the significance is embedded in the physical fabric or in associations with events or persons or in the experience of a place; i.e. its visual and non-visual qualities. This statement is a primary informant to the nature and degree of significance of an impact and thus needs to be thoroughly considered. Consideration needs to be given to the significance of a heritage resource at different scales (i.e. sitespecific, local, regional, national or international) and the relationship between the heritage resource, its setting and its associations.

**Nature of the impact**

This is an assessment of the nature of the impact of the activity on a heritage resource, with some indication of its positive and/or negative effect/s. It is strongly informed by the statement of resource significance. In other words, the nature of the impact may be historical, aesthetic, social, scientific, linguistic or architectural, intrinsic, associational or contextual (visual or non-visual). In many cases, the nature of the impact will include more than one value.

**Extent**

Here it should be indicated whether the impact will be experienced:

- On a site scale, i.e. extend only as far as the activity;
- Within the immediate context of a heritage resource;
- On a local scale, e.g. town or suburb
- On a metropolitan or regional scale; or
- On a national/international scale.

**Duration**

Here it should be indicated whether the lifespan of the impact will be:

- Short term, (needs to be defined in context)
- Medium term, (needs to be defined in context)
- Long term where the impact will persist indefinitely, possibly beyond the operational life of the activity, either because of natural processes or by human intervention; or
- Permanent where mitigation either by natural process or by human intervention will not occur in such a way or in such a time span that the impact can be considered transient.

Of relevance to the duration of an impact are the following considerations:

- Reversibility of the impact; and
- Renewability of the heritage resource.

**Intensity**

Here it should be established whether the impact should be indicated as:

- Low, where the impact affects the resource in such a way that its heritage value is not affected;
- Medium, where the affected resource is altered but its heritage value continues to exist albeit in a modified way; and
- High, where heritage value is altered to the extent that it will temporarily or permanently be damaged or destroyed.

**Probability**

This should describe the likelihood of the impact actually occurring indicated as:

- Improbable, where the possibility of the impact to materialize is very low either because of design or historic experience;
- Probable, where there is a distinct possibility that the impact will occur;
- Highly probable, where it is most likely that the impact will occur; or
- Definite, where the impact will definitely occur regardless of any mitigation measures

**Confidence**

This should relate to the level of confidence that the specialist has in establishing the nature and degree of impacts. It relates to the level and reliability of information, the nature and degree of consultation with I&AP's and the dynamic of the broader socio-political context.

- High, where the information is comprehensive and accurate, where there has been a high degree of consultation and the socio-political context is relatively stable.
- Medium, where the information is sufficient but is based mainly on secondary sources, where there has been a limited targeted consultation and socio-political context is fluid.
- Low, where the information is poor, a high degree of contestation is evident and there is a state of socio-political flux.

**Impact Significance**

The significance of impacts can be determined through a synthesis of the aspects produced in terms of the nature and degree of heritage significance and the nature, duration, intensity, extent, probability and confidence of impacts and can be described as:

- Low; where it would have a negligible effect on heritage and on the decision
- Medium, where it would have a moderate effect on heritage and should influence the decision.
- High, where it would have, or there would be a high risk of, a big effect on heritage. Impacts of high significance should have a major influence on the decision;
- Very high, where it would have, or there would be high risk of, an irreversible and possibly irreplaceable negative impact on heritage. Impacts of very high significance should be a central factor in decision-making.

**11.3 Direct Impact Assessment Criteria**

The following table provides an outline of the relationship between the significance of a heritage context, the intensity of development and the significance of heritage impacts to be expected

HERITAGE CONTEXT	TYPE OF DEVELOPMENT			
	CATEGORY A	CATEGORY B	CATEGORY C	CATEGORY D
<b>CONTEXT 1</b> High heritage Value	Moderate heritage impact expected	High heritage impact expected	Very high heritage impact expected	Very high heritage impact expected
<b>CONTEXT 2</b> Medium to high heritage value	Minimal heritage impact expected	Moderate heritage impact expected	High heritage impact expected	Very high heritage impact expected
<b>CONTEXT 3</b> Medium to low heritage value	Little or no heritage impact expected	Minimal heritage impact expected	Moderate heritage impact expected	High heritage impact expected
<b>CONTEXT 4</b> Low to no heritage value	Little or no heritage impact expected	Little or no heritage impact expected	Minimal heritage value expected	Moderate heritage impact expected
<b>NOTE: A DEFAULT "LITTLE OR NO HERITAGE IMPACT EXPECTED" VALUE APPLIES WHERE A HERITAGE RESOURCE OCCURS OUTSIDE THE IMPACT ZONE OF THE DEVELOPMENT.</b>				
HERITAGE CONTEXTS	CATEGORIES OF DEVELOPMENT			
<p><b>Context 1:</b> Of high intrinsic, associational and contextual heritage value within a national, provincial and local context, i.e. formally declared or potential Grade 1, 2 or 3A heritage resources</p> <p><b>Context 2:</b> Of moderate to high intrinsic, associational and contextual value within a local context, i.e. potential Grade 3B heritage resources.</p> <p><b>Context 3:</b> Of medium to low intrinsic, associational or contextual heritage value within a national, provincial and local context, i.e. potential</p>	<p><b>Category A: Minimal intensity development</b></p> <ul style="list-style-type: none"> <li>- No rezoning involved; within existing use rights.</li> <li>- No subdivision involved.</li> <li>- Upgrading of existing infrastructure within existing envelopes</li> <li>- Minor internal changes to existing structures</li> <li>- New building footprints limited to less than 1000m2.</li> </ul> <p><b>Category B: Low-key intensity development</b></p> <ul style="list-style-type: none"> <li>- Spot rezoning with no change to overall zoning of a site.</li> <li>- Linear development less than 100m</li> </ul>			



<p>Grade 3C heritage resources</p> <p><b>Context 4:</b> Of little or no intrinsic, associational or contextual heritage value due to disturbed, degraded conditions or extent of irreversible damage.</p>	<ul style="list-style-type: none"> <li>- Building footprints between 1000m2-2000m2</li> <li>- Minor changes to external envelop of existing structures (less than 25%)</li> <li>- Minor changes in relation to bulk and height of immediately adjacent structures (less than 25%).</li> </ul> <p><b>Category C: Moderate intensity development</b></p> <ul style="list-style-type: none"> <li>- Rezoning of a site between 5000m2-10 000m2.</li> <li>- Linear development between 100m and 300m.</li> <li>- Building footprints between 2000m2 and 5000m2</li> <li>- Substantial changes to external envelop of existing structures (more than 50%)</li> <li>- Substantial increase in bulk and height in relation to immediately adjacent buildings (more than 50%)</li> </ul> <p><b>Category D: High intensity development</b></p> <ul style="list-style-type: none"> <li>- Rezoning of a site in excess of 10 000m2</li> <li>- Linear development in excess of 300m.</li> <li>- Any development changing the character of a site exceeding 5000m2 or involving the subdivision of a site into three or more erven.</li> <li>- Substantial increase in bulk and height in relation to immediately adjacent buildings (more than 100%)</li> </ul>
---	--

#### 11.4 Management and Mitigation Actions

The following table provides a guideline of relevant heritage resources management actions is vital to the conservation of heritage resources.

<p><b>No further action / Monitoring</b></p> <p>Where no heritage resources have been documented, heritage resources occur well outside the impact zone of any development or the primary context of the surroundings at a development footprint has been largely destroyed or altered, no further immediate action is required. Site monitoring during development, by an ECO or the heritage specialist are often added to this recommendation in order to ensure that no undetected heritage\ remains are destroyed.</p> <p><b>Avoidance</b></p> <p>This is appropriate where any type of development occurs within a formally protected or significant or sensitive heritage context and is likely to have a high negative impact. Mitigation is not acceptable or not possible. This measure often includes the change / alteration of development planning and therefore impact zones in order not to impact on resources.</p> <p><b>Mitigation</b></p> <p>This is appropriate where development occurs in a context of heritage significance and where the impact is such that it can be mitigated to a degree of medium to low significance, e.g. the high to medium impact of a development on an archaeological site could be mitigated through sampling/excavation of the remains. Not all negative impacts can be mitigated.</p> <p><b>Compensation</b></p> <p>Compensation is generally not an appropriate heritage management action. The main function of management actions should be to conserve the resource for the benefit of future generations. Once lost it cannot be renewed. The circumstances around the potential public or heritage benefits would need to be exceptional to warrant this type of action, especially in the case of where the impact was high.</p> <p><b>Rehabilitation</b></p> <p>Rehabilitation is considered in heritage management terms as a intervention typically involving the adding of a new heritage layer to enable a new sustainable use. It is not appropriate when the process necessitates the removal of previous historical layers, i.e. restoration of a building or place to the previous state/period. It is an appropriate heritage management action in the following cases:</p> <ul style="list-style-type: none"> <li>- The heritage resource is degraded or in the process of degradation and would benefit from rehabilitation.</li> <li>- Where rehabilitation implies appropriate conservation interventions, i.e. adaptive reuse, repair and maintenance, consolidation and minimal loss of historical fabric.</li> <li>- Where the rehabilitation process will not result in a negative impact on the intrinsic value of the resource.</li> </ul> <p><b>Enhancement</b></p>
--

Enhancement is appropriate where the overall heritage significance and its public appreciation value are improved. It does not imply creation of a condition that might never have occurred during the evolution of a place, e.g. the tendency to sanitize the past. This management action might result from the removal of previous layers where these layers are culturally of low significance and detract from the significance of the resource. It would be appropriate in a range of heritage contexts and applicable to a range of resources. In the case of formally protected or significant resources, appropriate enhancement action should be encouraged. Care should, however, be taken to ensure that the process does not have a negative impact on the character and context of the resource. It would thus have to be carefully monitored