



**MAGOGUDI CONSTRUCTION PROJECTS: PROPOSED  
MAGOGUDI TYRE STORAGE FACILITIES ANNFIELD PROJECT ON  
PORTION 3 OF THE FARM ANNFIELD 178, GA-SEGONYANA  
LOCAL MUNICIPALITY, NORTHERN CAPE PROVINCE**

**Archaeological Impact Assessment**



**Prepared for: Magogudi Construction Projects**

**Prepared by: Exigo Sustainability**

## ARCHAEOLOGICAL IMPACT ASSESSMENT (AIA) ON PORTION 3 OF THE FARM ANNFIELD 178 FOR THE PROPOSED MAGOGUDI TYRE STORAGE FACILITIES ANNFIELD PROJECT, GA-SEGONYANA LOCAL MUNICIPALITY, NORTHERN CAPE PROVINCE

---

**Conducted for:**

Magogudi Construction Projects

**Compiled by:**

Nelius Kruger (BA, BA Hons. Archaeology Pret.)

**Reviewed by:**

Solly Lamola (Magogudi Construction Projects)

### DOCUMENT DISTRIBUTION LIST

Name	Institution
Solly Lamola	Magogudi Construction Projects

### DOCUMENT HISTORY

Date	Version	Status
25 May 2019	1.0	Draft

## DECLARATION

I, Nelius Le Roux Kruger, declare that –

- I act as the independent specialist;
- I am conducting any work and activity relating to the proposed Magogudi Tyre Storage Facilities Annfield Project in an objective manner, even if this results in views and findings that are not favourable to the client;
- I declare that there are no circumstances that may compromise my objectivity in performing such work;
- I have the required expertise in conducting the specialist report and I will comply with legislation, including the relevant Heritage Legislation (National Heritage Resources Act no. 25 of 1999, Human Tissue Act 65 of 1983 as amended, Removal of Graves and Dead Bodies Ordinance no. 7 of 1925, Excavations Ordinance no. 12 of 1980), the Minimum Standards: Archaeological and Palaeontological Components of Impact Assessment (SAHRA, AMAFA and the CRM section of ASAPA), regulations and any guidelines that have relevance to the proposed activity;
- I have not, and will not engage in, conflicting interests in the undertaking of the activity;
- I undertake to disclose to the applicant and the competent authority all material information in my possession that reasonably has or may have the potential of influencing - any decision to be taken with respect to the application by the competent authority; and - the objectivity of any report, plan or document to be prepared by myself for submission to the competent authority;
- All the particulars furnished by me in this declaration are true and correct.



Signature of specialist  
**Company:** Exigo Sustainability  
**Date:** 25 May 2019

Although Exigo Sustainability exercises due care and diligence in rendering services and preparing documents, Exigo Sustainability accepts no liability, and the client, by receiving this document, indemnifies Exigo Sustainability and its directors, managers, agents and employees against all actions, claims, demands, losses, liabilities, costs, damages and expenses arising from or in connection with services rendered, directly or indirectly by Exigo Sustainability and by the use of the information contained in this document.

This document contains confidential and proprietary information equally shared between Exigo Sustainability and Magogudi Construction Projects, and is protected by copyright in favour of these companies and may not be reproduced, or used without the written consent of these companies, which has been obtained beforehand. This document is prepared exclusively for Magogudi Construction Projects and is subject to all confidentiality, copyright and trade secrets, rules, intellectual property law and practices of South Africa. Exigo Sustainability promotes the conservation of sensitive archaeological and heritage resources and therefore uncompromisingly adheres to relevant Heritage Legislation (National Heritage Resources Act no. 25 of 1999, Human Tissue Act 65 of 1983 as amended, Removal of Graves and Dead Bodies Ordinance no. 7 of 1925, Excavations Ordinance no. 12 of 1980). In order to ensure best practices and ethics in the examination, conservation and mitigation of archaeological and heritage resources, Exigo Sustainability follows the Minimum Standards: Archaeological and Palaeontological Components of Impact Assessment as set out by the South African Heritage Resources Agency (SAHRA) and the CRM section of the Association for South African Professional Archaeologists (ASAPA).

### EXECUTIVE SUMMARY

This report details the results of an Archaeological Impact Assessment (AIA) study subject to an Environmental Basic Assessment (BA) process for the proposed Magogudi Tyre Storage Facilities Annfield Project on Portion 3 of the Farm Annfield 178 in the Ga-Segonyana Local Municipality of the Northern Cape Province. The proposed project entails the establishment of a tyre storage facility over a surface area of approximately 4ha on the farm property, which is situated approximately 20km south-east of the town of Kuruman. The report includes background information on the area’s archaeology, its representation in Southern Africa, and the history of the larger area under investigation, survey methodology and results as well as heritage legislation and conservation policies. A copy of the report will be supplied to the South African Heritage Resources Agency (SAHRA) and recommendations contained in this document will be reviewed.

<b>Project Title</b>	Magogudi Tyre Storage Facilities Annfield Project
<b>Project Location</b>	S27.509742° E23.635233°
<b>1:50 000 Map Sheet</b>	2723BC & 2723DA
<b>Farm Portion / Parcel</b>	Portion 3 of the Farm Annfield 178
<b>Magisterial District / Municipal Area</b>	Ga-Segonyana Local Municipality
<b>Province</b>	Northern Cape Province

A large number of archaeological and historical studies have been conducted in the larger Kuruman region. These studies all infer a rich and diverse archaeological landscape around the town but the Northern Cape Province at large encompasses a significant heritage legacy, mostly dominated by Stone Age occurrences. Numerous sites, documenting Earlier, Middle and Later Stone Age habitation occur across the province, mostly in open air locales or in sediments alongside rivers or pans. In addition, a wealth of Later Stone Age rock art sites, most of which are in the form of rock engravings are to be found in the larger landscape. These sites occur on hilltops, slopes, rock outcrops and occasionally in river beds. Sites dating to the Iron Age occur in the north eastern part of the Province but environmental factors delegated that the spread of Iron Age farming westwards from the 17th century was constrained mainly to the area east of the Langeberg Mountains. However, evidence of an Iron Age presence as far as the Upington area in the eighteenth century occurs in this area. Moving into recent times, the archaeological record reflects the development of a rich colonial frontier, characterised by, amongst others, a complex industrial archaeological and farming landscape. Earlier, Middle Stone Age and Later Stone Age scatters and quarries occur frequently in low lying areas on plains and outcrops around Kuruman.

A careful analysis of historical aerial imagery and archive maps indicate that the larger Annfield property had been utilized for livestock grazing and the farm remained relatively undeveloped during the last century. However, it is evident that the proposed footprint area subject to this assessment have been altered and transformed extensively by recent crop farming activities. This inference was confirmed during an archaeological site assessment during which no *in situ* archaeological or heritage remains were encountered within the proposed project footprint but archaeological material was noted along the outer periphery of this zone. Cognizant therefor, the following recommendations are made based on general observations in the proposed Magogudi Tyre Storage Facilities Annfield Project in terms of heritage resources management.

- A Palaeontological Impact Assessment is recommended where bedrock is to be impacted and, should fossil remains such as fossil fish, reptiles or petrified wood be exposed during construction, these objects should be carefully safeguarded and the relevant heritage resources authority (SAHRA) should be notified immediately so that the appropriate action can be taken by a professional palaeontologist.
- A number of MSA lithics, including formal tools such as broken points, scrapers and a blade were noted in the project area in the proposed expansion area north of the footprint. However, the low density of the scatter combined with the generally transformed nature of the local landscape which has resulted in a loss of primary context, has largely removed the scientific value of the artefacts. However, it is recommended that any development activities be monitored in order to avoid the destruction of previously undetected Stone Age occurrences.
- Considering the localised nature of heritage remains, the general monitoring of the development progress by an ECO or by the heritage specialist is recommended for all stages of the project. Should any subsurface palaeontological, archaeological or historical material, or burials be exposed during construction activities, all activities should be suspended and the archaeological specialist should be notified immediately.
- It is essential that cognisance be taken of the larger archaeological landscape of the area in order to avoid the destruction of previously undetected heritage sites. It should be stated that it is likely that further undetected archaeological remains might occur elsewhere in the Study Area along water sources and drainage lines, fountains and pans would often have attracted human activity in the past. Also, since Stone Age material seems to originate from below present soil surfaces in eroded areas, the larger landscape should be regarded as potentially sensitive in terms of possible subsurface deposits. Burials and historically significant structures dating to the Colonial Period occur on farms in the area and these resources should be avoided during all phases of construction and development, including the operational phases of the development.

***Cognisant of known site distribution patterns in this section of the Northern Cape Province, and based on general on-site observations and off-site assessments and, notably the fact that the project site have previously been transformed by intensive historical agriculture and farming, the author of this report is of the opinion that the construction of the Magogudi Tyre Storage Facilities Annfield Project, will have a minimal (if any) impact on archaeological artefacts, features or structures surviving in primary context, subject to the fact that no previously undetected heritage remains (for example, those in sub-surface deposits) are exposed at any stage of the development.***

This report details the methodology, limitations and recommendations relevant to these heritage areas, as well as areas of proposed development. It should be noted that recommendations and possible mitigation measures are valid for the duration of the development process, and mitigation measures might have to be implemented on additional features of heritage importance not detected during this Phase 1 assessment (e.g. uncovered during the construction process).

## NOTATIONS AND TERMS/TERMINOLOGY

**Absolute dating:** Absolute dating provides specific dates or range of dates expressed in years.

**Archaeological record:** The archaeological record minimally includes all the material remains documented by archaeologists. More comprehensive definitions also include the record of culture history and everything written about the past by archaeologists.

**Artefact:** Entities whose characteristics result or partially result from human activity. The shape and other characteristics of the artefact are not altered by removal of the surroundings in which they are discovered. In the Southern African context examples of artefacts include potsherds, iron objects, stone tools, beads and hut remains.

**Assemblage:** A group of artefacts recurring together at a particular time and place, and representing the sum of human activities.

**Context:** An artefact's context usually consists of its immediate *matrix*, its *provenience* and its *association* with other artefacts. When found in *primary context*, the original artefact or structure was undisturbed by natural or human factors until excavation and if in *secondary context*, disturbance or displacement by later ecological action or human activities occurred.

**Cultural Heritage Resource:** The broad generic term *Cultural Heritage Resources* refers to any physical and spiritual property associated with past and present human use or occupation of the environment, cultural activities and history. The term includes sites, structures, places, natural features and material of palaeontological, archaeological, historical, aesthetic, scientific, architectural, religious, symbolic or traditional importance to specific individuals or groups, traditional systems of cultural practice, belief or social interaction.

**Cultural landscape:** A cultural landscape refers to a distinctive geographic area with cultural significance.

**Cultural Resource Management (CRM):** A system of measures for safeguarding the archaeological heritage of a given area, generally applied within the framework of legislation designed to safeguard the past.

**Feature:** Non-portable artefacts, in other words artefacts that cannot be removed from their surroundings without destroying or altering their original form. Hearths, roads, and storage pits are examples of archaeological features

**Impact:** A description of the effect of an aspect of the development on a specified component of the biophysical, social or economic environment within a defined time and space.

**Lithic:** Stone tools or waste from stone tool manufacturing found on archaeological sites.

**Matrix:** The material in which an artefact is situated (sediments such as sand, ashy soil, mud, water, etcetera). The matrix may be of natural origin or human-made.

**Midden:** Refuse that accumulates in a concentrated heap.

**Microlith:** A small stone tool, typically knapped of flint or chert, usually about three centimetres long or less.

**Monolith:** A geological feature such as a large rock, consisting of a single massive stone or rock, or a single piece of rock placed as, or within, a monument or site.

**Phase 1 CRM Assessment:** An Impact Assessment which identifies archaeological and heritage sites, assesses their significance and comments on the impact of a given development on the sites. Recommendations for site mitigation or conservation are also made during this phase.

**Phase 2 CRM Study:** In-depth studies which could include major archaeological excavations, detailed site surveys and mapping / plans of sites, including historical / architectural structures and features. Alternatively, the sampling of sites by collecting material, small test pit excavations or auger sampling is required. Mitigation / Rescue involves planning the protection of significant sites or sampling through excavation or collection (in terms of a permit) at sites that may be lost as a result of a given development.

**Phase 3 CRM Measure:** A Heritage Site Management Plan (for heritage conservation), is required in rare cases where the site is so important that development will not be allowed and sometimes developers are encouraged to enhance the value of the sites retained on their properties with appropriate interpretive material or displays.

**Provenience:** Provenience is the three-dimensional (horizontal and vertical) position in which artefacts are found. Fundamental to ascertaining the provenience of an artefact is *association*, the co-occurrence of an artefact with other archaeological remains; and *superposition*, the principle whereby artefacts in lower levels of a matrix were deposited before the artefacts found in the layers above them, and are therefore older.

**Random Sampling:** A probabilistic sampling strategy whereby randomly selected sample blocks in an area are surveyed. These are fixed by drawing coordinates of the sample blocks from a table of random numbers.

**Scoping Assessment:** The process of determining the spatial and temporal boundaries (i.e. extent) and key issues to be addressed in an impact assessment. The main purpose is to focus the impact assessment on a manageable number of important questions on which decision making is expected to focus and to ensure that only key issues and reasonable alternatives are examined. The outcome of the scoping process is a Scoping Report that includes issues raised during the scoping process, appropriate responses and, where required, terms of reference for specialist involvement.

**Site (Archaeological):** A distinct spatial clustering of artefacts, features, structures, and organic and environmental remains, as the residue of human activity. These include surface sites, caves and rock shelters, larger open-air sites, sealed sites (deposits) and river deposits. Common functions of archaeological sites include living or habitation sites, kill sites, ceremonial sites, burial sites, trading, quarry, and art sites,

**Stratigraphy:** This principle examines and describes the observable layers of sediments and the arrangement of strata in deposits

**Systematic Sampling:** A probabilistic sampling strategy whereby a grid of sample blocks is set up over the survey area and each of these blocks is equally spaced and searched.

**Trigger:** A particular characteristic of either the receiving environment or the proposed project which indicates that there is likely to be an *issue* and/or potentially significant *impact* associated with that proposed development that may require specialist input. Legal requirements of existing and future legislation may also trigger the need for specialist involvement.

**LIST OF ABBREVIATIONS**

<b>Abbreviation</b>	<b>Description</b>
ASAPA	Association for South African Professional Archaeologists
AIA	Archaeological Impact Assessment
BP	Before Present
BCE	Before Common Era
BGG	Burial Grounds and Graves
CRM	Culture Resources Management
EIA	Early Iron Age (also Early Farmer Period)
EIA	Environmental Impact Assessment
EFP	Early Farmer Period (also Early Iron Age)
ESA	Earlier Stone Age
GIS	Geographic Information Systems
HIA	Heritage Impact Assessment
ICOMOS	International Council on Monuments and Sites
K2/Map	K2/Mapungubwe Period
LFP	Later Farmer Period (also Later Iron Age)
LIA	Later Iron Age (also Later Farmer Period)
LSA	Later Stone Age
MIA	Middle Iron Age (also Early later Farmer Period)
MRA	Mining Right Area
MSA	Middle Stone Age
NHRA	National Heritage Resources Act No.25 of 1999, Section 35
PFS	Pre-Feasibility Study
PHRA	Provincial Heritage Resources Authorities
SAFA	Society for Africanist Archaeologists
SAHRA	South African Heritage Resources Association
YCE	Years before Common Era (Present)

**TABLE OF CONTENTS**

---

<b>EXECUTIVE SUMMARY.....</b>	<b>5</b>
<b>1 BACKGROUND .....</b>	<b>11</b>
1.1 SCOPE AND MOTIVATION .....	11
1.2 PROJECT DIRECTION .....	11
1.3 PROJECT BRIEF .....	11
1.4 TERMS OF REFERENCE.....	13
1.5 CRM: LEGISLATION, CONSERVATION AND HERITAGE MANAGEMENT .....	13
1.5.1 <i>Legislation regarding archaeology and heritage sites</i> .....	13
1.5.2 <i>Background to HIA and AIA Studies</i> .....	15
<b>2 REGIONAL CONTEXT.....</b>	<b>16</b>
2.1 AREA LOCATION .....	16
2.2 AREA DESCRIPTION: RECEIVING ENVIRONMENT .....	16
2.3 SITE DESCRIPTION .....	16
<b>3 METHOD OF ENQUIRY.....</b>	<b>19</b>
3.1 SOURCES OF INFORMATION .....	19
3.1.1 <i>Desktop Study</i> .....	19
3.1.2 <i>Aerial Survey</i> .....	19
3.1.3 <i>Mapping of sites</i> .....	19
3.1.4 <i>Field Survey</i> .....	19
3.1.5 <i>General Public Liaison</i> .....	20
3.2 LIMITATIONS.....	20
3.2.1 <i>Access</i> .....	20
3.2.2 <i>Visibility</i> .....	20
3.2.3 <i>Summary: Limitations and Constraints</i> .....	24
3.3 IMPACT ASSESSMENT.....	24
<b>4 ARCHAEO-HISTORICAL CONTEXT.....</b>	<b>24</b>
4.1 THE ARCHAEOLOGY OF SOUTHERN AFRICA.....	24
4.2 DISCUSSION: THE KALAHARI LANDSCAPE: SPECIFIC THEMES .....	25
4.2.1 <i>Early History and the Stone Ages</i> .....	25
4.2.2 <i>A Later Stone Age landscape of Rock Markings</i> .....	26
4.2.3 <i>Iron Age / Farmer Period</i> .....	28
4.2.4 <i>Pastoralism and the last 2000 years</i> .....	29
4.2.5 <i>Later History: Colonial Period and the Anglo Boer War</i> .....	29
4.2.6 <i>Significant Heritage Sites in this section of the Northern Cape Province</i> .....	33
- <i>Thaba Sione Rock Art Site</i> .....	34
<b>5 RESULTS: ARCHAEOLOGICAL SURVEY .....</b>	<b>35</b>
5.1 THE OFF-SITE DESKTOP SURVEY.....	35
5.2 THE ARCHAEOLOGICAL SITE SURVEY.....	37
<b>6 RESULTS: STATEMENT OF SIGNIFICANCE AND IMPACT RATING .....</b>	<b>39</b>
6.1 POTENTIAL IMPACTS AND SIGNIFICANCE RATINGS.....	39
6.1.1 <i>General assessment of impacts on resources</i> .....	39
6.1.2 <i>Direct impact rating</i> .....	39
6.2 EVALUATION IMPACTS .....	40
6.2.1 <i>Archaeology</i> .....	40
6.2.2 <i>Built Environment</i> .....	40
6.2.3 <i>Cultural Landscape</i> .....	40
6.2.4 <i>Graves / Human Burials Sites</i> .....	40
6.3 MANAGEMENT ACTIONS.....	41

---



<b>7</b>	<b>RECOMMENDATIONS</b> .....	<b>42</b>
<b>8</b>	<b>GENERAL COMMENTS AND CONDITIONS</b> .....	<b>43</b>
<b>9</b>	<b>BIBLIOGRAPHY</b> .....	<b>44</b>
<b>10</b>	<b>ADDENDUM 1: HERITAGE LEGISLATION BACKGROUND</b> .....	<b>47</b>
10.1	CRM: LEGISLATION, CONSERVATION AND HERITAGE MANAGEMENT .....	47
10.1.1	Legislation regarding archaeology and heritage sites.....	47
10.1.2	Background to HIA and AIA Studies.....	48
10.2	ASSESSING THE SIGNIFICANCE OF HERITAGE RESOURCES .....	50
	- CATEGORIES OF SIGNIFICANCE .....	50
<b>11</b>	<b>ADDENDUM 2: CONVENTIONS USED TO ASSESS THE SIGNIFICANCE OF HERITAGE</b> .....	<b>52</b>
11.1	SITE SIGNIFICANCE MATRIX.....	52
11.2	IMPACT ASSESSMENT CRITERIA .....	53
11.3	DIRECT IMPACT ASSESSMENT CRITERIA .....	54
11.4	MANAGEMENT AND MITIGATION ACTIONS.....	55

**LIST OF FIGURES**

Figure 1-1:	Aerial map indicating the proposed Magogudi Tyre Storage Facilities Annfield Project area. ....	12
Figure 2-1:	1:50 00 Map representation of the location of the proposed Magogudi Tyre Storage Facilities Annfield Project (sheet 2723BC & 2723DA). ....	17
Figure 2-2:	Aerial map providing a regional context for the proposed Magogudi Tyre Storage Facilities Annfield Project area. ....	18
Figure 3-1:	View of the project footprint area, looking south. ....	20
Figure 3-2:	View of cleared fields denoting the proposed project footprint. ....	21
Figure 3-3:	View of the northern boundary of the project area along the proposed expansion area. ....	21
Figure 3-4:	View of more intact vegetation in the proposed expansion area north of the project footprint. ....	21
Figure 3-5:	A heap of stones cleared from the agricultural field denoting the project area. ....	22
Figure 3-6:	View of the project area, looking south towards the farmstead compound. ....	22
Figure 3-7:	View of old agricultural fields in the project area. ....	22
Figure 3-8:	The modern farmstead south of the project footprint. ....	23
Figure 3-9:	View of temporary structures at the farmstead compound south of the project footprint. ....	23
Figure 3-10:	A cattle enclosure at the farmstead compound south of the project footprint. ....	23
Figure 4-1:	Typical ESA handaxe (left) and cleaver (center). To the right is a MSA scraper (right, top), point (right, middle) and blade (right, bottom). ....	26
Figure 4-2:	Rock engravings at the Wildebeest Kuil Rock Art Site. ....	28
Figure 4-3:	Map showing the original demarcation of the Lower Kuruman Native Reserve. ....	31
Figure 4-4:	Title deed for the farm Annfield c. 1895. ....	32
Figure 4-5:	Interior of the Wonderwerk Cave. ....	33
Figure 4-6:	Early Stone Age (Acheul) handaxe from the Kathu Pan site ( <a href="http://www.museumsonc.co.za">http://www.museumsonc.co.za</a> ). ....	34
Figure 5-1:	An aerial image of Annfield dating to 1944 indicating the location of the subject farm (yellow outlines) during the early 20 <sup>th</sup> century. Note the apparent absence of man-made structures on the farm pproperty. ....	35
Figure 5-2:	Historical topographic maps of Annfield dating to 1973 (left) and 2003 (right), indicating the location of the project area (green outline) during the mid to later 20 <sup>th</sup> century. A borehole structure and the later location of the farmstead is indicated by the yellow arrows. ....	36
Figure 5-3:	View of red sands holding MSA tools on the surface, along the northern expansion area. ....	37
Figure 5-4:	MSA prepared cores noted in the project area in the expansion area. ....	38
Figure 5-5:	A blade (left), a scraper (centre) and a broken point (right) from the MSA located in the expansion area. ....	38
Figure 5-5:	Surface scarring visible on rocks (white arrows), possibly indicating lithic sourcing from the MSA located in the expansion area. ....	38

## 1 BACKGROUND

---

### 1.1 Scope and Motivation

Exigo Sustainability (Pty) Ltd (Exigo) was commissioned by Magogudi Construction Projects to conduct an Archaeological Impact Assessment (AIA) study subject to an Environmental Basic Assessment (BA) process for the proposed Magogudi Tyre Storage Facilities Annfield Project in the Northern Cape Province. The rationale of this AIA is to determine the presence of heritage resources such as archaeological and historical sites and features, graves and places of religious and cultural significance in previously unstudied areas; to consider the impact of the proposed project on such heritage resources, and to submit appropriate recommendations with regard to the cultural resources management measures that may be required at affected sites / features.

### 1.2 Project Direction

Exigo's expertise ensures that all projects be conducted to the highest international ethical and professional standards. As archaeological specialist for Exigo Sustainability, Mr Neels Kruger acted as field director for the project; responsible for the assimilation of all information, the compilation of the final consolidated AIA report and recommendations in terms of heritage resources on the demarcated project areas. Mr Kruger is an accredited archaeologist and Culture Resources Management (CRM) practitioner with the Association of South African Professional Archaeologists (ASAPA), a member of the Society for Africanist Archaeologists (SAFA) and the Pan African Archaeological Association (PAA) as well as a Master's Degree candidate in archaeology at the University of Pretoria.

### 1.3 Project Brief

Magogudi Construction Projects proposes the establishment of a tyre storage facility over a surface area of approximately **4ha** on a portion of the farm Annfield. For the project, a disused and cleared agricultural field on the farm has been demarcated with possible expansion into greenfields along the north-western periphery of this area, should additional space be required (see Figure 1-1). The proposed facility will consist out of the following components:

- **A concrete surface of 4ha for tyre storage,**
- **Water and electricity supply infrastructure,**
- **A site office**
- **An access road to the site.**

The proposed facility, trucks will deliver scrap tyres for temporary storage. The scrap tyres will be shred and baled whereafter the bales will be transported to a recycling facility.

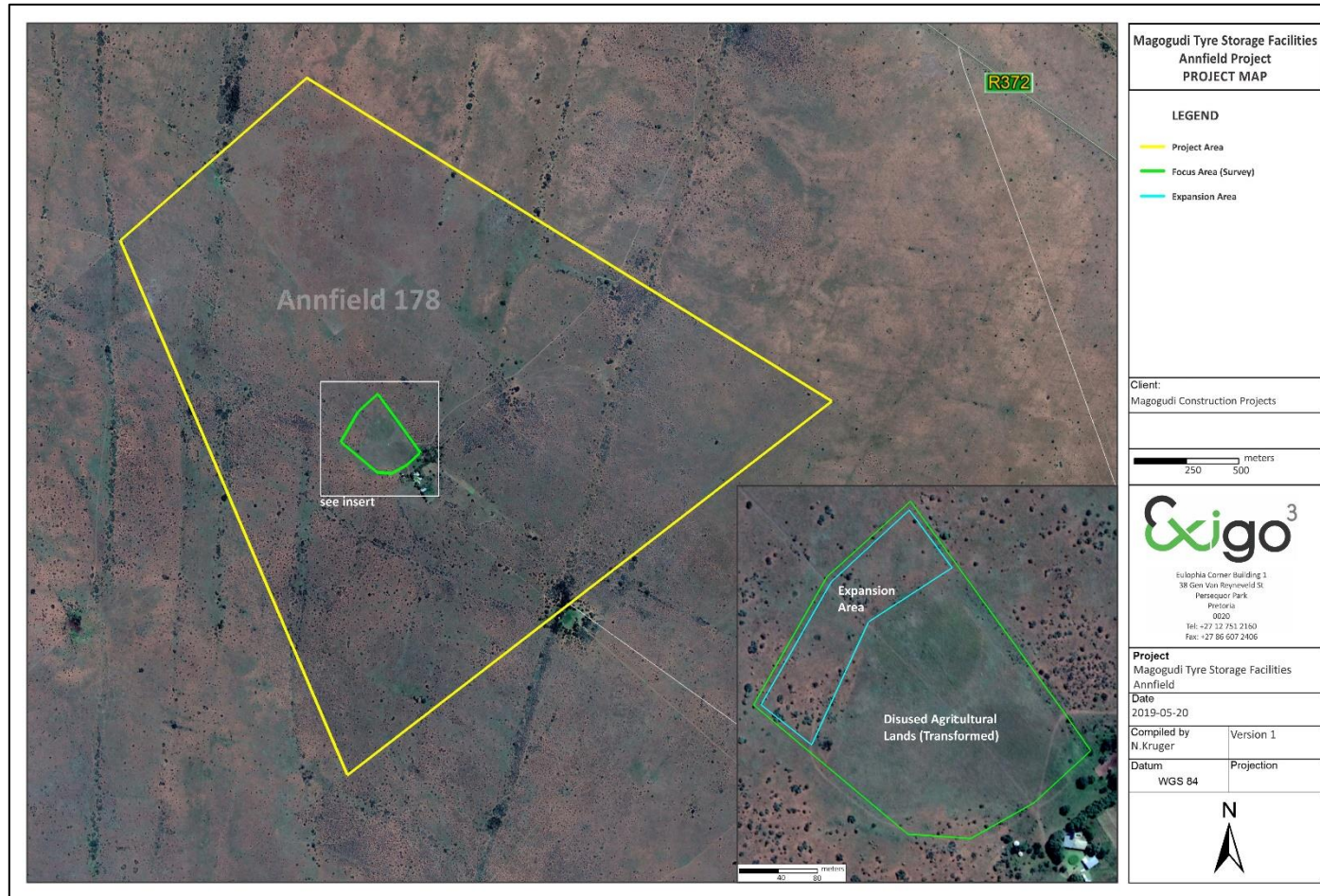


Figure 1-1: Aerial map indicating the proposed Magogudi Tyre Storage Facilities Annfield Project area.

## 1.4 Terms of Reference

Heritage specialist input into the Environmental Impact Assessment (EIA) process is essential to ensure that, through the management of change, developments still conserve our heritage resources. It is also a legal requirement for certain development categories which may have an impact on heritage resources. Thus, EIAs should always include an assessment of heritage resources. The heritage component of the EIA is provided for in the **National Environmental Management Act, (Act 107 of 1998)** and endorsed by section 38 of the **National Heritage Resources Act (NHRA - Act 25 of 1999)**. In addition, the NHRA protects all structures and features older than 60 years, archaeological sites and material and graves as well as burial sites. The objective of this legislation is to ensure that developers implement measures to limit the potentially negative effects that the development could have on heritage resources. Based hereon, this project functioned according to the following **terms of reference** for heritage specialist input:

- *Provide a detailed description of all archaeological artefacts, structures (including graves) and settlements which may be affected, if any.*
- *Assess the nature and degree of significance of such resources within the area.*
- *Establish heritage informants/constraints to guide the development process through establishing thresholds of impact significance;*
- *Assess and rate any possible impact on the archaeological and historical remains within the area emanating from the proposed development activities.*
- *Propose possible heritage management measures provided that such action is necessitated by the development.*
- *Liaise and consult with the South African Heritage Resources Agency (SAHRA). A Notification of Intent to Develop (NID) will be submitted to SAHRA at the soonest opportunity.*

## 1.5 CRM: Legislation, Conservation and Heritage Management

The broad generic term *Cultural Heritage Resources* refers to any physical and spiritual property associated with past and present human use or occupation of the environment, cultural activities and history. The term includes sites, structures, places, natural features and material of palaeontological, archaeological, historical, aesthetic, scientific, architectural, religious, symbolic or traditional importance to specific individuals or groups, traditional systems of cultural practice, belief or social interaction.

### 1.5.1 Legislation regarding archaeology and heritage sites

The South African Heritage Resources Agency (SAHRA) and its provincial offices aim to conserve and control the management, research, alteration and destruction of cultural resources of South Africa. It is therefore vitally important to adhere to heritage resource legislation at all times.

#### a. National Heritage Resources Act No 25 of 1999, section 35

According to the National Heritage Resources Act No 25 of 1999 (section 35) the following features are protected as cultural heritage resources:

- a. Archaeological artefacts, structures and sites older than 100 years
- b. Ethnographic art objects (e.g. prehistoric rock art) and ethnography

- c. Objects of decorative and visual arts
- d. Military objects, structures and sites older than 75 years
- e. Historical objects, structures and sites older than 60 years
- f. Proclaimed heritage sites
- g. Grave yards and graves older than 60 years
- h. Meteorites and fossils
- i. Objects, structures and sites of scientific or technological value.

In addition, the national estate includes the following:

- a. Places, buildings, structures and equipment of cultural significance
- b. Places to which oral traditions are attached or which are associated with living heritage
- c. Historical settlements and townscapes
- d. Landscapes and features of cultural significance
- e. Geological sites of scientific or cultural importance
- f. Archaeological and paleontological sites
- g. Graves and burial grounds
- h. Sites of significance relating to the history of slavery
- i. Movable objects (e.g. archaeological, paleontological, meteorites, geological specimens, military, ethnographic, books etc.)

With regards to activities and work on archaeological and heritage sites this Act states that:

*“No person may alter or demolish any structure or part of a structure which is older than 60 years without a permit by the relevant provincial heritage resources authority.” (34. [1] 1999:58)*

and

*“No person may, without a permit issued by the responsible heritage resources authority-*

- (a) *destroy, damage, excavate, alter, deface or otherwise disturb any archaeological or palaeontological site or any meteorite;*
- (b) *destroy, damage, excavate, remove from its original position, collect or own any archaeological or palaeontological material or object or any meteorite;*
- (c) *trade in, sell for private gain, export or attempt to export from the Republic any category of archaeological or palaeontological material or object, or any meteorite; or*
- (d) *bring onto or use at an archaeological or palaeontological site any excavation equipment or any equipment which assist in the detection or recovery of metals or archaeological and palaeontological material or objects, or use such equipment for the recovery of meteorites. (35. [4] 1999:58).”*

and

*“No person may, without a permit issued by SAHRA or a provincial heritage resources agency-*



- (a) *destroy, damage, alter, exhume or remove from its original position or otherwise disturb the grave of a victim of conflict, or any burial ground or part thereof which contains such graves;*
- (b) *destroy, damage, alter, exhume, remove from its original position or otherwise disturb any grave or burial ground older than 60 years which is situated outside a formal cemetery administered by a local authority;*
- (c) *bring onto or use at a burial ground or grave referred to in paragraph (a) or (b) and excavation equipment, or any equipment which assists in the detection or recovery of metals (36. [3] 1999:60)."*

**b. Human Tissue Act of 1983 and Ordinance on the Removal of Graves and Dead Bodies of 1925**

Graves and burial grounds are commonly divided into the following subsets:

- a. ancestral graves
- b. royal graves and graves of traditional leaders
- c. graves of victims of conflict
- d. graves designated by the Minister
- e. historical graves and cemeteries
- f. human remains

Graves 60 years or older are heritage resources and fall under the jurisdiction of both the National Heritage Resources Act and the Human Tissues Act of 1983. However, graves younger than 60 years are specifically protected by the Human Tissues Act (Act 65 of 1983) and Ordinance on Excavations (Ordinance no. 12 of 1980) as well as any local and regional provisions, laws and by-laws. Such burial places also fall under the jurisdiction of the National Department of Health and the Provincial Health Departments.

**c. National Heritage Resources Act No 25 of 1999, section 35**

This act (Act 107 of 1998) states that a survey and evaluation of cultural resources must be done in areas where development projects, that will change the face of the environment, will be undertaken. The impact of the development on these resources should be determined and proposals for the mitigation thereof are made. Environmental management should also take the cultural and social needs of people into account. Any disturbance of landscapes and sites that constitute the nation's cultural heritage should be avoided as far as possible and where this is not possible the disturbance should be minimized and remedied.

**1.5.2 Background to HIA and AIA Studies**

South Africa's unique and non-renewable archaeological and palaeontological heritage sites are 'generally' protected in terms of the National Heritage Resources Act (Act No 25 of 1999, section 35) and may not be disturbed at all without a permit from the relevant heritage resources authority. Heritage sites are frequently threatened by development projects and both the environmental and heritage legislation require impact assessments (HIAs & AIAs) that identify all heritage resources in areas to be developed. Particularly, these assessments are required to make recommendations for protection or mitigation of the impact of the sites. HIAs and AIAs should be done by qualified professionals with adequate knowledge to (a) identify all heritage resources including archaeological and palaeontological sites that might occur in areas of developed and (b) make recommendations for protection or mitigation of the impact on the sites.

**A detailed guideline of statutory terms and requirements is supplied in Addendum 1.**

## 2 REGIONAL CONTEXT

---

### 2.1 Area Location

The proposed Magogudi Tyre Storage Facilities Annfield Project occurs on Portion 3 of the Farm Annfield 178 in the Ga-Segonyana Local Municipality of the Northern Cape Province. The farm, comprising mainly of uncultivated open grasslands, is located directly west the small settlements of Ntswelengwe and Manyeding. The R372 route passes east of the project area. The project area is situated 20km south-east of the town of Kuruman and Daniëlskuil occurs 70km south of Annfield.

The study areas appear on 1:50000 map sheet 2723BC & 2723DA (see Figure 2-1) and coordinates for the proposed project are as follows:

- **S27.509742° E23.635233°**

### 2.2 Area Description: Receiving Environment

The Farm Annfield lies within the Savanna biome which is the largest biome in Southern Africa. It is characterized by a grassy ground layer and a distinct upper layer of woody plants (trees and shrubs). The environmental factors delimiting the biome are complex and include altitude, rainfall, geology and soil types, with rainfall being the major delimiting factor. Fire and grazing also keep the grassy layer dominant. The most recent classification of the area by Mucina & Rutherford shows that the site is classified as Ghaap Plateau Vaalbosveld. The landscape features of the Ghaap Plateau Vaalbosveld vegetation type are a flat plateau with well-developed shrub layer dominated by *Tarchonanthus camphoratus* underlied by surface limestone and dolomite. The conservation status of the Ghaap Plateau Vaalbosveld is Least Threatened with none conserved in statutory reserves and only 1% transformed (Mucina & Rutherford, 2006). This vegetation type covers most of the Ghaap Plateau, and is found on different types of soils, such as calcareous tufa, dark brown to red sands and acid gravels, all underlain by dolomite.

### 2.3 Site Description

Annfield occurs on fairly flat terrain and vegetation in the study area range from moderate to dense surface cover. The current land-use on the farm, which remains relatively pristine, is mainly grazing by livestock and game, with small area utilized for crop cultivation. Neighboring farms are being used for livestock grazing and game farming. The major land use of the study area as classified by the Environmental Potential Atlas of South Africa (2000) is vacant / unspecified land. There are no significant landscape features on the project footprint and man-made structures on the property include a farmstead building, cattle enclosures and concrete damns with windmills.

The proposed footprint area subject to this assessment have been altered and transformed extensively by recent crop farming activities but the northern expansion area remains more pristine with surface grasses and trees occurring throughout.

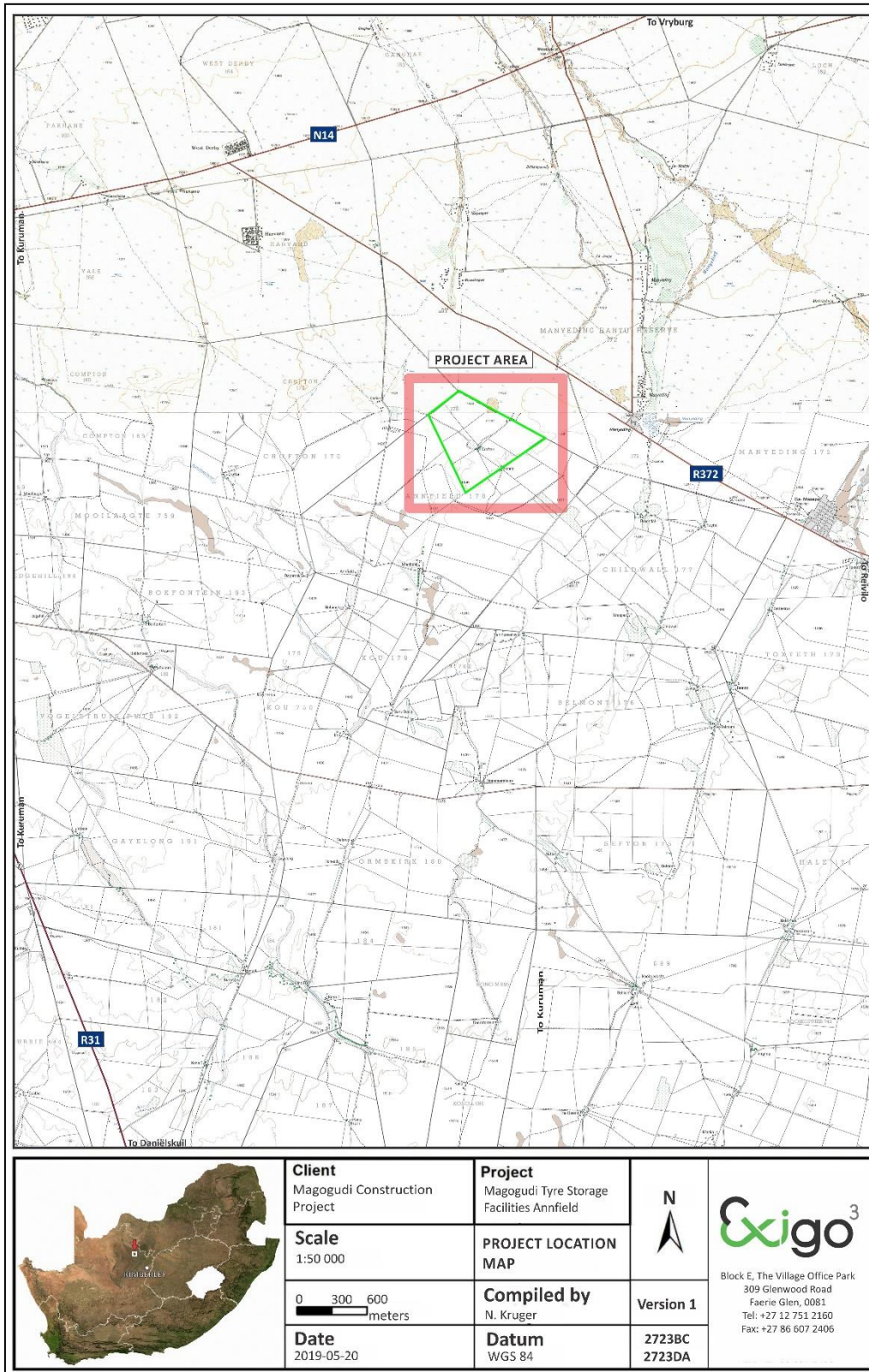


Figure 2-1: 1:50 00 Map representation of the location of the proposed Magogudi Tyre Storage Facilities Annfield Project (sheet 2723BC & 2723DA).



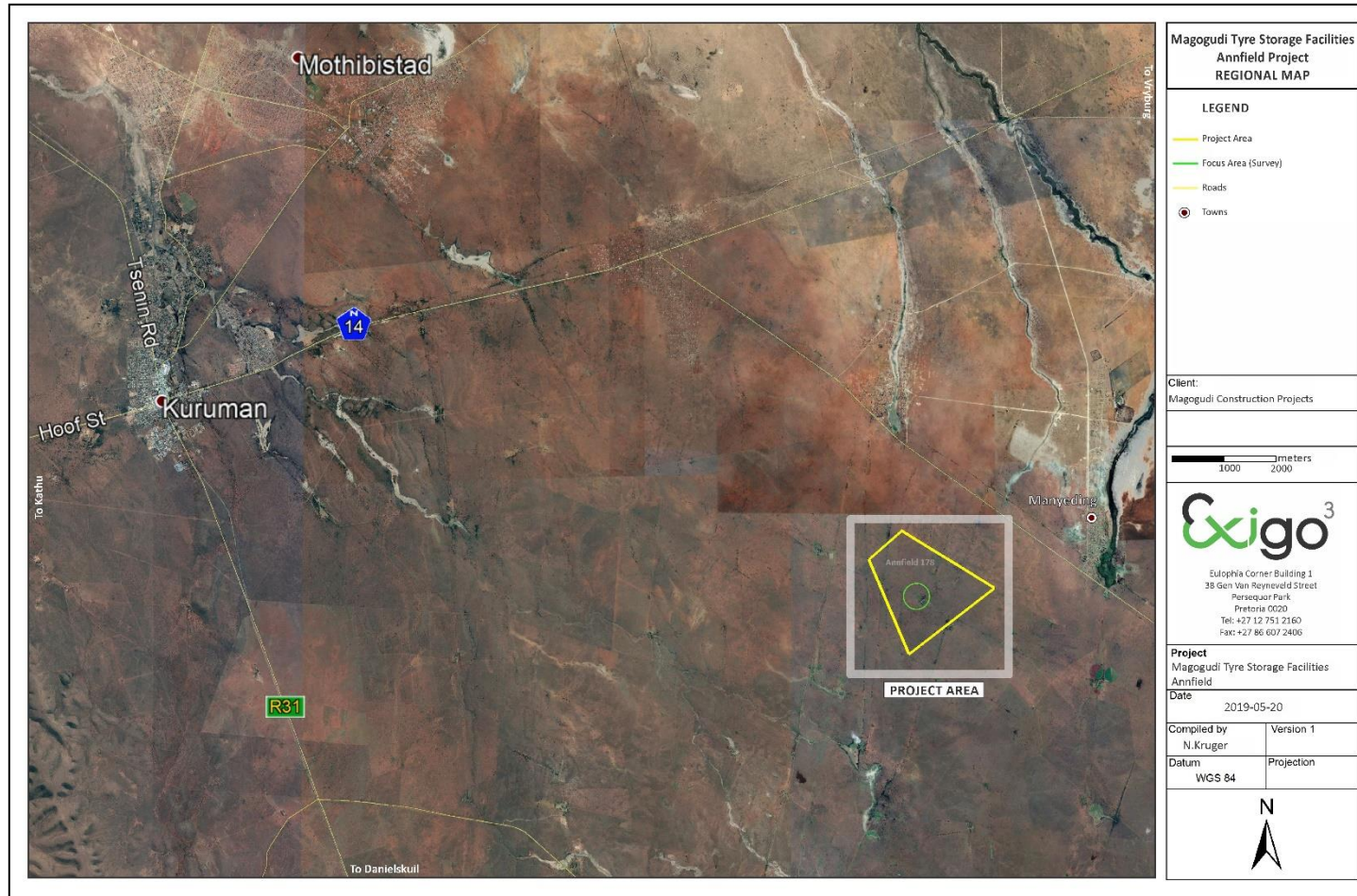


Figure 2-2: Aerial map providing a regional context for the proposed Magogudi Tyre Storage Facilities Annfield Project area.

### 3 METHOD OF ENQUIRY

---

#### 3.1 Sources of Information

Data from detailed desktop, aerial and field studies were employed in order to sample surface areas systematically and to ensure a high probability of heritage site recording.

##### 3.1.1 Desktop Study

The larger landscape around Kuruman has been well documented in terms of its archaeology and history. Numerous academic papers and research articles supplied a historical context for the proposed project and archival sources, aerial photographs, historical maps and local histories were used to create a baseline of the landscape's heritage. In addition, the study drew on available unpublished Heritage Assessment reports to give a comprehensive representation of known sites in the study area.

##### 3.1.2 Aerial Survey

Aerial photography is often employed to locate and study archaeological sites, particularly where larger scale area surveys are performed. This method was applied to assist the foot and automotive site surveys where depressions, variation in vegetation, soil marks and landmarks were examined. Specific attention was given to shadow sites (shadows of walls or earthworks which are visible early or late in the day), crop mark sites (crop mark sites are visible because disturbances beneath crops cause variations in their height, vigour and type) and soil marks (e.g. differently coloured or textured soil (soil marks) might indicate ploughed-out burial mounds). Attention was also given to moisture differences, as prolonged dampening of soil as a result of precipitation frequently occurs over walls or embankments. In addition, historical aerial photos obtained during the archival search were scrutinized and features that were regarded as important in terms of heritage value were identified and if they were located within the boundaries of the project area they were physically visited in an effort to determine whether they still exist and in order to assess their current condition and significance. By superimposing high frequency aerial photographs with images generated with Google Earth as well as historical aerial imagery, potential sensitive areas were subsequently identified, geo-referenced and transferred to a handheld GPS device. These areas served as reference points from where further vehicular and pedestrian surveys were carried out.

##### 3.1.3 Mapping of sites

Historical and current maps of the project area were examined. By merging data obtained from the desktop study and the aerial survey, sites and areas of possible heritage potential were plotted on these maps of the larger Kuruman area using GIS software. These maps were then superimposed on high definition aerial representations in order to graphically demonstrate the geographical locations and distribution of potentially sensitive landscapes.

##### 3.1.4 Field Survey

Archaeological survey implies the systematic procedure of the identification of archaeological sites. An archaeological survey of the Magogudi Tyre Storage Facilities Annfield Project area was conducted in May 2019. The process encompassed a systematic field survey in accordance with standard archaeological practice by which heritage resources are observed and documented. In order to sample surface areas systematically and to ensure a high probability of site recording, the proposed **project footprint** as well as the potential **expansion area** were investigated (see Figure 1-1). Particular focus was placed on proposed infrastructure footprint areas provided to the specialist. GPS reference points identified during the aerial survey were also visited and random spot checks were made (see detail in previous section). Using a Garmin

GPS, the survey was tracked and general surroundings were photographed with a Samsung Digital camera. Real time aerial orientation, by means of a mobile Google Earth application was also employed to investigate possible disturbed areas during the survey.

### 3.1.5 General Public Liaison

Correspondence with the owner and the farm provided information on the general history of the area, possible locations of heritage resources and brief commentaries on the recent history of the farm. The farm owner who has been living on the farm for many decades, pointed to the fact that, according to his knowledge, no heritage resources was present on the property.

## 3.2 Limitations

### 3.2.1 Access

The study area is accessed directly via a farm road connecting to the R372. Access control is applied to the properties but no restrictions were encountered during the site visit as arrangements for access were made with the farm owner.

### 3.2.2 Visibility

The surrounding vegetation in the project area mostly comprised out of mixed grasslands and occasional in deep red sands. The general visibility at the time of the AIA survey (May 2019) ranged from high in transformed areas, to moderate in more pristine and overgrown zones. In single cases during the survey sub-surface inspection was possible. Where applied, this revealed no archaeological deposits.



Figure 3-1: View of the project footprint area, looking south.





Figure 3-2: View of cleared fields denoting the proposed project footprint.



Figure 3-3: View of the northern boundary of the project area along the proposed expansion area.



Figure 3-4: View of more intact vegetation in the proposed expansion area north of the project footprint.





Figure 3-5: A heap of stones cleared from the agricultural field denoting the project area.



Figure 3-6: View of the project area, looking south towards the farmstead compound.



Figure 3-7: View of old agricultural fields in the project area.





Figure 3-8: The modern farmstead south of the project footprint.



Figure 3-9: View of temporary structures at the farmstead compound south of the project footprint.



Figure 3-10: A cattle enclosure at the farmstead compound south of the project footprint.

### 3.2.3 Summary: Limitations and Constraints

The site survey for the Magogudi Tyre Storage Facilities Annfield Project AIA primarily focused around areas tentatively identified as sensitive and of high heritage probability (i.e. those noted during the aerial survey) as well as areas of high human settlement catchment. In summary, the following constraints were encountered during the site survey:

- The surrounding vegetation in the Kuruman area is mostly comprised out of mixed grasslands and scattered trees with the occurrence of semi-arid succulents in places. The general visibility at the time of the site inspection was moderate but visibility constrained site identification in more pristine areas where denser surface cover occurred in the expansion area.

It should be noted that, even though it might be assumed that survey findings are representative of the heritage landscape of the project area for the Project, it should be stated that the possibility exists that individual sites could be missed due to the localised nature of some heritage remains as well as the possible presence of sub-surface archaeology. Therefore, maintaining due cognisance of the integrity and accuracy of the archaeological survey, it should be stated that the heritage resources identified during the study do not necessarily represent all the heritage resources present in the project area. The subterranean nature of some archaeological sites, dense vegetation cover and visibility constraints sometimes distort heritage representations and any additional heritage resources located during consequent development phases must be reported to the Heritage Resources Authority or an archaeological specialist.

### 3.3 Impact Assessment

For consistency among specialists, impact assessment ratings by Exigo Specialist are generally done using the Plomp<sup>1</sup> impact assessment matrix scale supplied by Exigo. According to this matrix scale, each heritage receptor in the study area is given an impact assessment. The significances of the impacts were determined through a synthesis of the criteria below:

## 4 ARCHAEO-HISTORICAL CONTEXT

### 4.1 The archaeology of Southern Africa

Archaeology in Southern Africa is typically divided into two main fields of study, the **Stone Age** and the **Iron Age** or **Farmer Period**. The following table provides a concise outline of the chronological sequence of periods, events, cultural groups and material expressions in Southern African pre-history and history.

**Table 1 Chronological Periods across Southern Africa**

Period	Epoch	Associated cultural groups	Typical Material Expressions
Early Stone Age 2.5m – 250 000 YCE	Pleistocene	Early Hominins: <i>Australopithecines</i> <i>Homo habilis</i> <i>Homo erectus</i>	Typically large stone tools such as hand axes, choppers and cleavers.
Middle Stone Age 250 000 – 25 000 YCE	Pleistocene	First <i>Homo sapiens</i> species	Typically smaller stone tools such as scrapers, blades and points.
Late Stone Age	Pleistocene /	<i>Homo sapiens sapiens</i>	Typically small to minute stone tools such as

<sup>1</sup> Plomp, H., 2004

20 000 BC – present	Holocene	including San people	arrow heads, points and bladelets.
Early Iron Age / Early Farmer Period 300 – 900 AD <b>(commonly restricted to the interior and north-east coastal areas of Southern Africa)</b>	Holocene	First Bantu-speaking groups	Typically distinct ceramics, bead ware, iron objects, grinding stones.
Middle Iron Age (Mapungubwe / K2) / early Later Farmer Period 900 – 1350 AD <b>(commonly restricted to the interior and north-east coastal areas of Southern Africa)</b>	Holocene	Bantu-speaking groups, ancestors of present-day groups	Typically distinct ceramics, bead ware and iron / gold / copper objects, trade goods and grinding stones.
Late Iron Age / Later Farmer Period 1400 AD -1850 AD <b>(commonly restricted to the interior and north-east coastal areas of Southern Africa)</b>	Holocene	Various Bantu-speaking groups including Venda, Thonga, Sotho-Tswana and Zulu	Distinct ceramics, grinding stones, iron objects, trade objects, remains of iron smelting activities including iron smelting furnace, iron slag and residue as well as iron ore.
Historical / Colonial Period ±1850 AD – present	Holocene	Various Bantu-speaking groups as well as European farmers, settlers and explorers	Remains of historical structures e.g. homesteads, missionary schools etc. as well as, glass, porcelain, metal and ceramics.

#### 4.2 Discussion: The Kalahari Landscape: Specific Themes

The history of this section of the Northern Cape Province is reflected in a rich archaeological landscape, mostly dominated by Stone Age and Colonial Period occurrences. Numerous sites, documenting Earlier, Middle and Later Stone Age habitation occur across the landscape, mostly in open air locales or in sediments alongside rivers or pans. In addition, a wealth of Later Stone Age rock art sites, most of which are in the form of rock engravings are to be found in the larger landscape. These sites occur on hilltops, slopes, rock outcrops and occasionally in river beds. Sites dating to the Iron Age occur in the north eastern part of the Northern Cape Province but environmental factors delegated that the spread of Iron Age farming westwards from the 17th century was constrained mainly to the area east of the Langeberg Mountains. However, evidence of an Iron Age presence as far as the Upington area in the eighteenth century occurs in the larger landscape area. Moving into recent times, the archaeological record reflects the development of a rich colonial frontier, characterised by, amongst others, a complex industrial archaeological landscape such as mining developments at Kimberley, which herald the modern era in South African history. Finally, the Northern Cape Province saw a number of war conflicts, particularly the Anglo Boer War (or the South African War) left behind the remnants of battlefields, skirmishes and concentration camps.

##### 4.2.1 Early History and the Stone Ages

According to archaeological research, the earliest ancestors of modern humans emerged some two to three million years ago. The remains of Australopithecine and *Homo habilis* have been found in dolomite caves and underground dwellings in the Riverton Area at places such as Sterkfontein and Swartkrans near Krugersdorp. *Homo habilis*, one of the Early Stone Age hominids, is associated with Oldowan artefacts, which include crude implements manufactured from large pebbles. The Acheulian industrial complex replaced the Oldowan industrial complex during the Early Stone Age. This phase of human existence was widely



distributed across South Africa and is associated with *Homo erectus*, who manufactured hand axes and cleavers from as early as one and a half million years ago. Middle Stone Age sites dating from as early as two hundred thousand years ago have been found all over South Africa. Middle Stone Age hunter-gatherer bands also lived and hunted in the Orange and Vaal River valleys. These people, who probably looked like modern humans, occupied campsites near water but also used caves as dwellings. They manufactured a wide range of stone tools, including blades and points that may have had long wooden sticks as hafts and were used as spears.

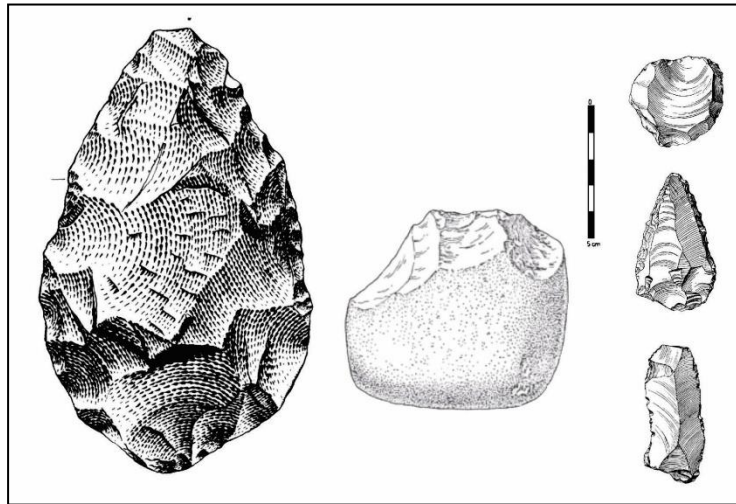


Figure 4-1: Typical ESA handaxe (left) and cleaver (center). To the right is a MSA scraper (right, top), point (right, middle) and blade (right, bottom).

The landscape surrounding the project area subject seems to have been sparsely populated by humans in the past, possibly as a result of the general scarcity of sustainable water sources as well as the absence of hills or outcrops for shelter. As such, Stone Age sites are not randomly scattered within the landscape and they occur either near water sources or close to local sources of two highly-prized raw materials, specularite and jaspilite. However, the larger landscape towards the town of Kuruman is rich in archaeological material dating to Earlier and Middle Stone Ages. Sites such as Wonderwerk Cave, Kathu Pan and Kathu Townlands (see below) have yielded significant Stone Age assemblages that all inform on our general understanding of the technological sequences of the Stone Age in the Northern Cape (e.g. see Beaumont 2008; Morris 2006; Morris 2007; Dreyer 2007). In addition, a large amount of Middle and Later Stone Age sites have been documented across the landscape on calcrete lined pans and road cuttings. The Taung area to the south is significant in terms of early human development. In 1924, the fossilized skull of an early human infant was discovered by a quarry-worker in the nearby Buxton-limestone quarry. The fossil remains were described by Raymond Dart in 1925 as the type specimen of *Australopithecus africanus*. Later *in-situ* excavations were conducted under the direction of Phillip Tobias of the University of the Witwatersrand, and although they failed to find additional hominid specimens they did recover many important fossil baboons. The Taung Child, as the hominin fossil became known, is among the most important early human fossils ever discovered. It was the first hominid to be discovered in Africa, a species later named *Australopithecus africanus*.

#### 4.2.2 A Later Stone Age landscape of Rock Markings

Rock engravings are mostly situated in the semi-arid plateau with most of these engravings situated at the Orange – Vaal basin, Karoo and Namibia. The upper Vaal, Limpopo basin and eastern Free State regions have a small quantity of rock engravings as well. Generally, rock paintings exist at cave areas and rock engravings at open surface areas. The Cape interior consists of a technical, formal and thematic variation between and

within sites (Morris 1988). Two major techniques existed namely the incised and pecked engravings. Morris (1988) indicated technical and formal characteristics through space and a sharp contrast exists between engravings positioned north of the Orange River that are mostly pecked and those in the Karoo where scraping was mostly used. According to Morris (1988) hairline engravings occur at the North and the South, but they are rare at the Kuruman region. Finger painting techniques mostly occur at the Kuruman Hills, Asbestos Mountains, Ghaap Escarpment, Langeberg, Koranaberg ranges, scattered sites at the Karoo and the Kareeberge (Morris 1988). The development petroglyphs (i.e. carving or line drawing on rock) were associated with three different types of techniques, namely incised fine lines, pecked engravings and scraped engravings. According to Peter Beaumont the pecked and scraped engravings at the Upper Karoo are coeval (i.e. having the same age or date of origin) (Beaumont P B et al. 1989). Dating of rock art includes the use of carbonate fraction dating of ostrich eggshell pieces, dating of charcoal and ostrich eggshell at various rock art shelters. Unifacial points, double segments and thin – walled sherds may indicate the presence of the Khoikhoi at the Northern Cape during 2500 BP (years Before the Present) (Beaumont 1989).

- **Hunter-Gatherer rock paintings**

The delicate and frequently detailed San fine-line paintings were made using brushes made from twigs, quills, sticks or feathers. Red and yellow pigments applied in this way were made from various shades of ferric oxides or ochres; black pigments were prepared from charcoal and minerals like specularite, and white pigments from silicas and various riverine clays.

- **Khoekhoe rock paintings**

Khoekhoe rock art mainly comprises red and white finger paintings of dots, strokes, geometric forms, handprints and a component of representational motifs. This painting tradition extends from Central Africa to the southern parts of South Africa. Khoekhoe art comprises handprints, finger dots and strokes, variations of the circle motif, and images of fringed and unfringed women's aprons. The accompanying chart illustrates the image classes found in the region. The paintings are large and bold, and were painted in red or white, applied by human fingers, unlike the more familiar San paintings which are fine and delicate, painted with sticks and bristles in a variety of colours, and depict things we can recognise: animals and people. Like the San paintings, however, Geometric Tradition pigments were carefully applied, albeit by finger, as evidenced by the crisp clear outlines and with no sign of splashing — images clearly made without haste and without a mess. Again, like the San paintings, Khoekhoe paintings are made with colourants like red ochres and white minerals that were finely ground and mixed with binders, judging from the way the paints penetrate and adhere to the rock and are not easily washed off by water seepage. Although the art is sometimes found in the same rock shelters as engravings, San paintings, or Northern Sotho paintings, or various combinations of these techniques and traditions the Khoekhoe paintings are often found in small low-ceilinged shelters high up on the sides of hills or between tumbled rocks on the summits of hills — one has to bend down or even crawl in order to view the art where it is frequently placed on the ceiling. They are also frequently found in huge shelters with sharply sloping floors. All these locations are in stark contrast to San preferences for painting sites. The San generally used comfortable rock shelters at ground level, with horizontal, usually sandy floors — and preferred to paint on vertical rock faces.

- **Rock engravings: Engraved animals**

San peoples or their ancestors undoubtedly made the engravings of animals, because similar engravings all over southern Africa have been shown to have San authorship. Like San paintings, these engravings have been shown to have their roots in a shamanistic cosmology. In most areas of the subcontinent engravings were associated with ideas about rainmaking or depict elements of the medicine dance and the supernaturally potent animals.



Figure 4-2: Rock engravings at the Wildebeest Kuil Rock Art Site.

#### 4.2.3 Iron Age / Farmer Period

The beginnings of the Iron Age (Farmer Period) in southern Africa are associated with the arrival of a new Bantu speaking population group at around the third century AD. These newcomers introduced a new way of life into areas that were occupied by Later Stone Age hunter-gatherers and Khoekhoe herders. Distinctive features of the Iron Age are a settled village life, food production (agriculture and animal husbandry), metallurgy (the mining, smelting and working of iron, copper and gold) and the manufacture of pottery. The Tlharo seems to have been the first Tswana group to enter the Kuruman area. They originated from the Hurutshe further to the north-east, and after splitting from this group during the end of the 17th century, moved in a southern direction down the Molopo River. Their early settlements included Khuis, Madibeng, Heuningvlei, Langeberg and Tsineng (Snyman, 1992). As mentioned earlier, the town of Tsineng (Tsenin) is located in the general vicinity of the present study area. The second important Tswana group from the wider area is the Tlhaping. They originated from the Rolong and during the mid-1700s moved southward along the Harts and Vaal Rivers to the vicinity of Campbell from where they traveled westwards into the area falling between Tsantsabane and Majeng on the edge of the Kalahari Desert. The Tlhaping established a capital on a perennial river known as Nokaneng. Their ruler during this time was king Maswe. Although the exact locality of Nokaneng is not known, one possibility is that the present non-perennial river Ga-Mogara used to be the Nokaneng River. This possibility was supported by the missionary John Campbell who in 1820 referred to the Ga-Mogara River as the Nokaneng (Snyman, 1992). Interestingly, Robert Moffat indicated Nokaneng to have been situated to the east of the Langeberg. This said, it is important to note that Breutz (1992) stresses the point that the actual capital Nokaneng was in fact located in the direct vicinity of Postmasburg. During the reign of Molehabangwe, who had succeeded his father Maswe in 1775, a confederation was formed which consisted of a stratified society comprised of the Tlhaping, Rolong, Tlharo, Kgalagadi and San. While the Tlhaping was seen as the ruler class, the Kgalagadi and San were viewed as vassals (Snyman, 1992). The Tlhaping conducted extensive trading activities with the Korana to the south and the Tswana to the north. During 1770 some of the Korana groups crossed the Orange River and came to the land of the Tlhaping. Although the initial contact was peaceful, conflict soon erupted. The better-armed Korana managed to force the Tlhaping out of the area in approximately 1790. This move was further augmented by the fact that the Nokaneng River had dried up. The Tlhaping first moved to Kathu and then to Ga-Mopedi on the Kuruman River. The Tlhaping eventually established themselves at Dithakong on the Moshaweng River (Snyman, 1992).

#### 4.2.4 Pastoralism and the last 2000 years

Until 2000 years ago, hunter-gatherer communities traded, exchanged goods, encountered and interacted with other hunter-gatherer communities. From about 2000 years ago the social dynamics of the Southern African landscape started changing with the immigration of two 'other' groups of people, different in physique, political, economic and social systems, beliefs and rituals. One of these groups, the Khoekhoen pastoralists or herders entered Southern Africa with domestic animals, namely fat-tailed sheep and goats, travelling through the south towards the coast. They also introduced thin-walled pottery common in the interior and along the coastal regions of Southern Africa. Their economic systems were directed by the accumulation of wealth in domestic stock numbers and their political make-up was more hierarchical than that of the hunter-gatherers.

#### 4.2.5 Later History: Colonial Period and the Anglo Boer War

The Kuruman area played a strategic role during the Anglo-Boer and towns such as Postmasburg, situated about 100km south of Kuruman, acted as an important link between the Boer forces from Transvaal to the Cape Colony south of the Orange River, providing ammunition and horses (Snyman 1985). The oral and written history of the Northern Cape pertaining to the last centuries is relatively abundant resulting from an assimilation of local folklore and Historical sources such as missionary accounts. The Historical period commenced when pioneers (in most cases, missionaries) arrived between the nineteenth century and early twentieth century, depending on the region. Later, larger populations established villages in the area, some of which are often still occupied today. During the 1930's some of the Tswana communities consisted of a wealth of cattle that could be used to gain capital and purchase additional land. The Khoisan and Khoikhoi communities were not so lucky, because they were mostly used as labourers at various Tswana and European households (Wylie 1989). As noted elsewhere, the landscape around the study area was scarcely populated in Historical times and it was only towards the early 19th century that missionaries, hunters and traders access the region. These pioneers were followed by Colonial farmers who negotiated with local chiefs for land, or occupied areas that were perceived to be vacant. In some areas short-lived Boer Republics were established.

Two of the more well-known early European explorers to these areas were Hinrich Lichtenstein in 1805 and Andrew Smith during 1835. During his journey into the interior, Lichtenstein visited present-day Danielskuil and by June 1805, the party reached at Blinkklip (Potsmasburg). From here they travelled further north and reached the Kuruman River where they encountered Tswana-speaking people. They followed the river downstream for three days, after which they followed a tributary to reach Lattakoe. From here they turned south and reached the Orange River on 11 July 1805. While on their way to the Kuruman River (and to the south thereof), Lichtenstein and his fellow travellers visited a small settlement consisting of "...about thirty flat spherical huts." Although the people who stayed here were herdsmen who looked after the cattle of richer people living on the Kuruman River, they indicated that San (Bushmen) were also present in the area. Lichtenstein's party subsequently travelled further north to visit the capital of King Mulihawang located on a plain in the vicinity of the Kuruman River. He described the town as consisting of six hundred houses with 5000 inhabitants. The individual dwellings were described as follows: "The houses were all of a circular form, with the roof running up to a point; the roof rests on a circle of poles, which are united together below by thin walls of loam; above, for a little way below the roof, they are left open to admit light and air." (Lichtenstein, 1930:373). Lichtenstein also indicated that hedges were used as cattle enclosures.

The expedition of Andrew Smith into the interior of Southern Africa can be seen as one of the highlights of the era of exploration and travel into these regions of Africa. After some traveling, which included a visit to Mosjesj, Smith's party crossed over the Vaal River and after reaching this river's confluence with the Harts, followed it to Boetsap and subsequently reached Kuruman (Bergh, 1999). Smith met Robert Moffat at



Kuruman, and during this time made a journey all along the Kuruman River to Tsineng from where he travelled south to the Langeberg. Returning to Tsineng, Smith travelled north to Heuningvlei before returning back to Kuruman (Bergh, 1999). Smith's journey from Tsineng to the Langeberg reached the Ga-Mogara River and in the vicinity of Tsineng, he encountered a number of springs which the local people called Malichana. He observed a small group of Tswanas (Bituanas) as well as a Griqua family staying near the springs, and indicated that the Tswana group conducted agricultural activities in gardens laid out near the springs. From Tsineng Smith's party travelled all along the bank of the Kuruman River, presumably to the confluence of the Ga-Mogara River. On this stretch of the journey Smith observed "...a number of almost naked natives in the distance carrying ostrich shells and something resembling leather sacks upon their shoulders..." (Lye, 1975:181). These people were on their way to a water hole, which had been excavated some seven meters deep. Anyone wishing to obtain water had to climb down the hole making use of footholds along the sides. When Reverend Robert Moffat first arrived in the Kuruman area in 1819 he found the Tlhaping settled at Maropin in the Kuruman Valley under their ruler Mothibi. They subsequently moved upstream to the vicinity of present-day Kuruman. During the same time Moffat found the BaTlharo established at Tseneng. In a document written by the Superintendent of Natives on 3 November 1921, it is indicated that before the farms to the west of the Lower Kuruman Native Reserve were surveyed and ceded to different white farmers, the black people of the area "...had the run of the whole country to the Moshewing River on the one side and the Gamagara River on the other..." and grazed their livestock and conducted agricultural activities over these vast tracts of land. In an associated petition document drawn up by the Tlharo people of Bathlaros, they indicated that their agricultural lands and cattle posts used to stretch in a westward direction all the way to the "Dibeng" River, which appears to be the present-day Ga-Mogara River (NTS, 7752, 22/335).

On 23 March 1885 Britain declared a Protectorate over Bechuanaland and the Kalahari. On 30 September 1885 the Protectorate was divided into two parts. The area north of the Molopo River remained the Bechuanaland Protectorate and up to 1895 was administered from Vryburg, after which the capital was moved to Mafeking. The area south of the Molopo became the Crown Colony of British Bechuanaland with its capital at Vryburg (Tlou & Campbell, 1997). This area included the present study area as well as Kuruman. In accordance to Act 31 of 1895 the area south of the Molopo River, namely British Bechuanaland, was included in the Cape Colony. This took place during November 1895 (Smit, 1966). The Northern Cape was subjected to a resettlement program during the apartheid years. Tswana families were divided into the men who had to live in a compound and the women who were sent to a relocation centre (Hallett 1984). Between 1960 and 1962 it was estimated that an average of 834,000 people were affected by the Group Areas Act (Hallett 1984).

On 4 May 1895 the Lower Kuruman Native Reserve as well as a number of other so-called native reserves was established by virtue of Bechuanaland Proclamation No. 220 of 1895. These reserves were demarcated as part of a commission which investigated land claims and land settlement in British Bechuanaland. A subsequent report titled "Report of the Commissioners appointed to determine land claims and to the effect of a land settlement in British Bechuanaland" and published in 1896, contained all the findings of the commission (Breutz, 1963). At the time of its establishment, the Lower Kuruman Native Reserve had a population of 5425, and being 225 square miles in extent, had a population density of 26.5 acres per individual. With time, the population density increased. Livestock numbers also increased drastically. As a result of these pressures the size of the reserve was subsequently extended. During negotiations and discussions on such an expansion of the reserve, it was indicated that a number of black people were residing outside the boundaries of the reserve. In a police report dated 22 January 1908 a list is provided of all the people, white and black, residing "...on the banks of the Kuruman River north of the surveyed farms in the Sishen Valley." This document provides an indication of human habitation in the direct vicinity of the study area during the early 1900s. One interesting observation to be made from the document is that some of the

persons who acted as borehole watchmen were black. For example, Hans Gaboerke had been living at Dibiachomo since 1899 and was tasked with keeping the well open (NTS, 7752, 22/335).

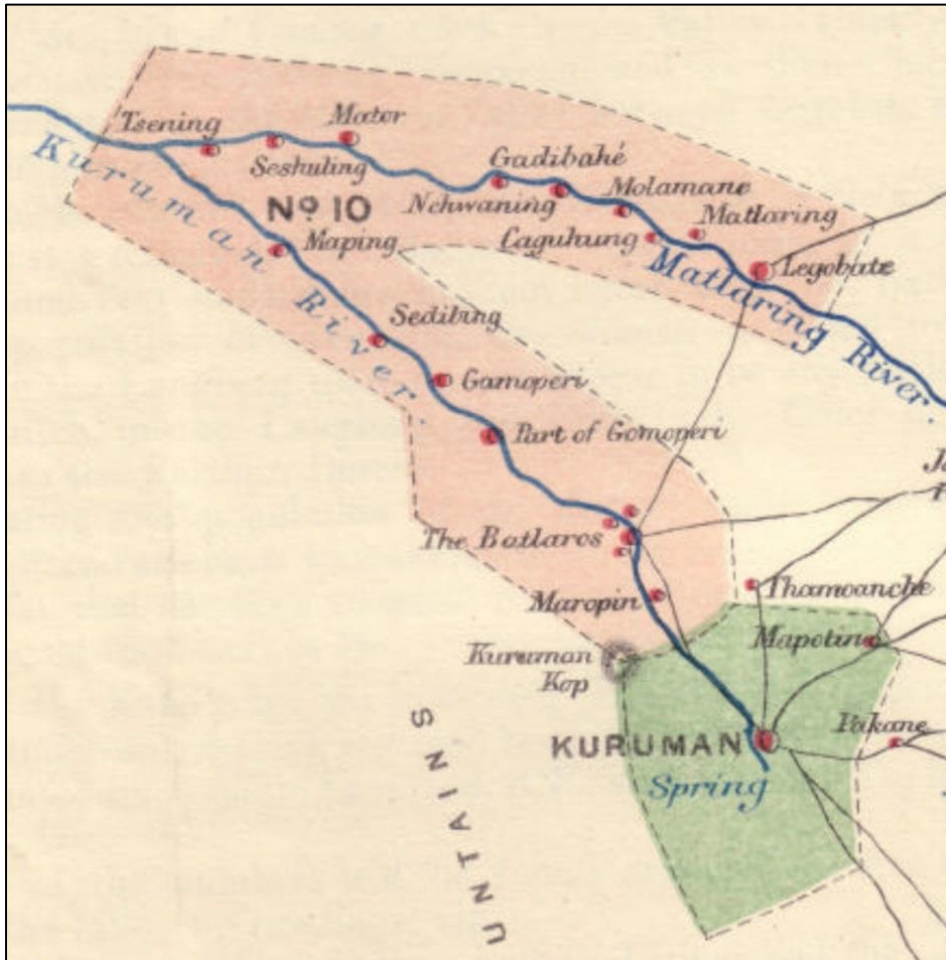


Figure 4-3: Map showing the original demarcation of the Lower Kuruman Native Reserve.

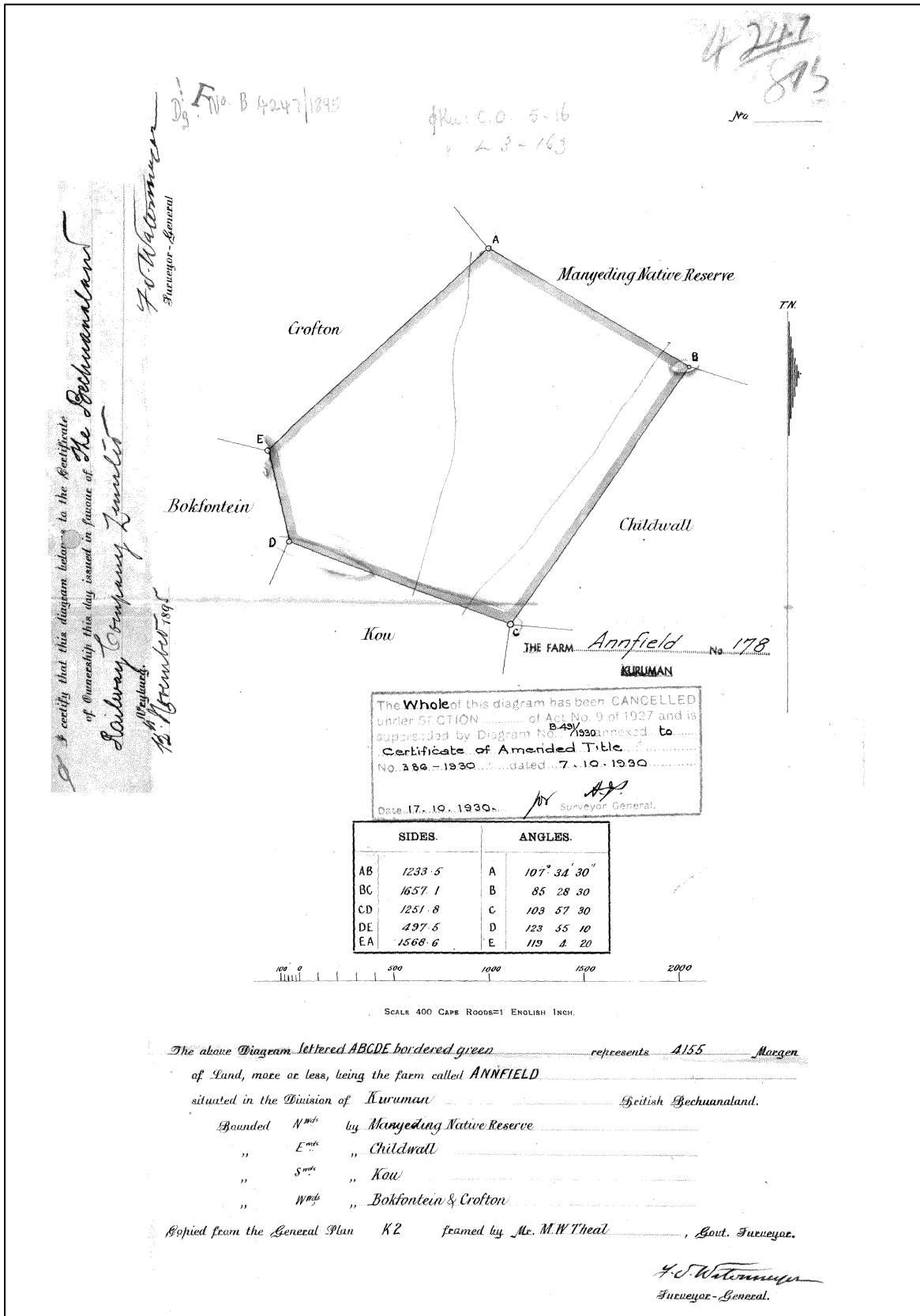


Figure 4-4: Title deed for the farm Annfield c. 1895.

#### 4.2.6 Significant Heritage Sites in this section of the Northern Cape Province

The Northern Cape has a wealth of pre-colonial archaeological sites (Beaumont & Morris 1990; Morris & Beaumont 2004). Some of these sites in the larger landscape around Vryburg and Kuruman include:

- ***Wonderwerk Cave***

One of the most important archaeological sites in the region is the world renowned long-sequence Wonderwerk Cave, formed originally as an ancient solution cavity in Dolomite rocks of the Kuruman Hills. The cave, situated between Danielskuil and Kuruman, contains up to 6 m depth of archaeological deposits reflecting human and environmental history through the Earlier, Middle and Later Stone Ages to the present. Rock art occurs in the form of parietal paintings within the first 40 metres from the entrance, possibly all less than 1000 years old, and small engraved stones found within the deposit, mainly from the Later Stone Age sequence where they date back some 10 500 years. The associations of older engraved or striated pieces have yet to be substantiated.



Figure 4-5: Interior of the Wonderwerk Cave

- ***Dithakong***

Important farmer period Iron Age remnants occur at the major Tswana town and pre-colonial stone-walled settlements of Dithakong. Local BaThaping communities claimed not to have known who had made or lived in this earlier town but archaeological investigations have established Tswana affinities in the earlier settlement which includes features indicative of frontier complexity at this south-western edge of Tswana expansion. Early traveller accounts refer to an impressively large town consisting of mud houses, traces of which have yet to be located archaeologically.

- ***Gamohana Shelters***

Two rock shelters on the northern and southern faces of GaMohaana (Gamohana), situated in the Kuruman Hills north west of the town, contain Later Stone Age remains and rock paintings.

- ***Moffat Mission Station and the Kuruman Mission***

Historically, Kuruman boasts one of the longest trajectories of African-colonial interaction centred on the nearly two-century old Moffat Mission. The Kuruman Mission was established by the London Missionary



Society (LMS) in 1816 at Maruping near Kuruman where a town of about 10 000 Batswana were resident. Robert Moffat (1795-1887) arrived in Kuruman from Scotland in 1820, and soon organised permission from Chief Mothibi to relocate it to the present position at Seodin in the valley of the Kuruman River. From here he preached Christianity to the local people. Moffat laboured at the mission for 50 years, and his period is considered the “golden age” of missionary work amongst the Batswana. He was a man of considerable talents and oversaw the building of staff houses, a school house, store rooms, and the “cathedral of the Kalahari”, the great Moffat Church (1838) which can seat 800 people. The mission is also well-known as the first African home of Dr. David Livingstone. He arrived as an LMS missionary in 1841, and remained in contact with the mission due to his marriage to Moffat’s eldest daughter Mary.

#### - **Kathu Pan**

This site, situated near the town of Kathu, is a shallow water pan about 30ha in extent. The site was extensively studied from 1974 to 1990 by Humpreys and Beaumont, amongst others. Kathu Pan is an extremely significant site as it represents the major industries of the Stone Age, more specifically two phases of the Earlier Stone Age, two phases of the Middle Stone Age, and more or less the entire Later Stone Age (Beaumont 1990). The site yielded large amounts of hand axes and faunal remains, including the concentrated remains of large mammal remains. More recently, research by Jayne Wilkins revealed a hoard of stone points, each between 4 and 9 centimeters long, that they think belonged to the earliest stone-tipped spears yet found. The stone points are the right shape and size for the job, and some have fractured tips that suggest they were used as weapons. Since stone points used on spears had been found only at sites that date back no more than 300 000 years, these discoveries in the 500 000-year-old deposits at Kathu is greatly significant. The abundance of Stone Age material at Kathu Pan can probably be attributed to the presence of a permanent water source at the pan.



Figure 4-6: Early Stone Age (Acheul) handaxe from the Kathu Pan site (<http://www.museumsnc.co.za>).

#### - **Thaba Sione Rock Art Site**

Thaba Sione is a well-known rock engraving site near Khunwana and Kraaipan and, with over 559 engravings, the site is a major Bushman spiritual site dominated by depictions of rhinoceros – some of which have been rubbed smooth. There is also buffalo, eland, isolated animal horns, shamanic human figures, a rare lizard, wildebeest. Many rocks have been rubbed smooth by rhinoceros. The site is still important today to local Tswana people and is used by the Zionist Christian Church as a rain-making centre

## 5 RESULTS: ARCHAEOLOGICAL SURVEY

---

### 5.1 The Off-Site Desktop Survey

In terms of heritage resources, the general landscape around the project area is primarily well known for its Earlier, Middle Stone Age and Colonial / Historical Period archaeology, the latter primarily related to a rich missionary and farming horizon. However, no particular reference to archaeological sites or features of heritage potential were recorded during an examination of literature thematically or geographically related to the project area at Annfield.

A careful analysis of historical aerial imagery and archive maps indicate that the larger Annfield property had been utilized for livestock grazing and the farm remained relatively undeveloped during the last century. These sources also suggest that man-made structures such as the Annfield farmstead appeared on the farm only later in the 20<sup>th</sup> century (see Figure 5-1 and Figure 5-2). More recent aerial images indicate that the proposed footprint area subject to this assessment have been altered and transformed extensively by recent crop farming activities.

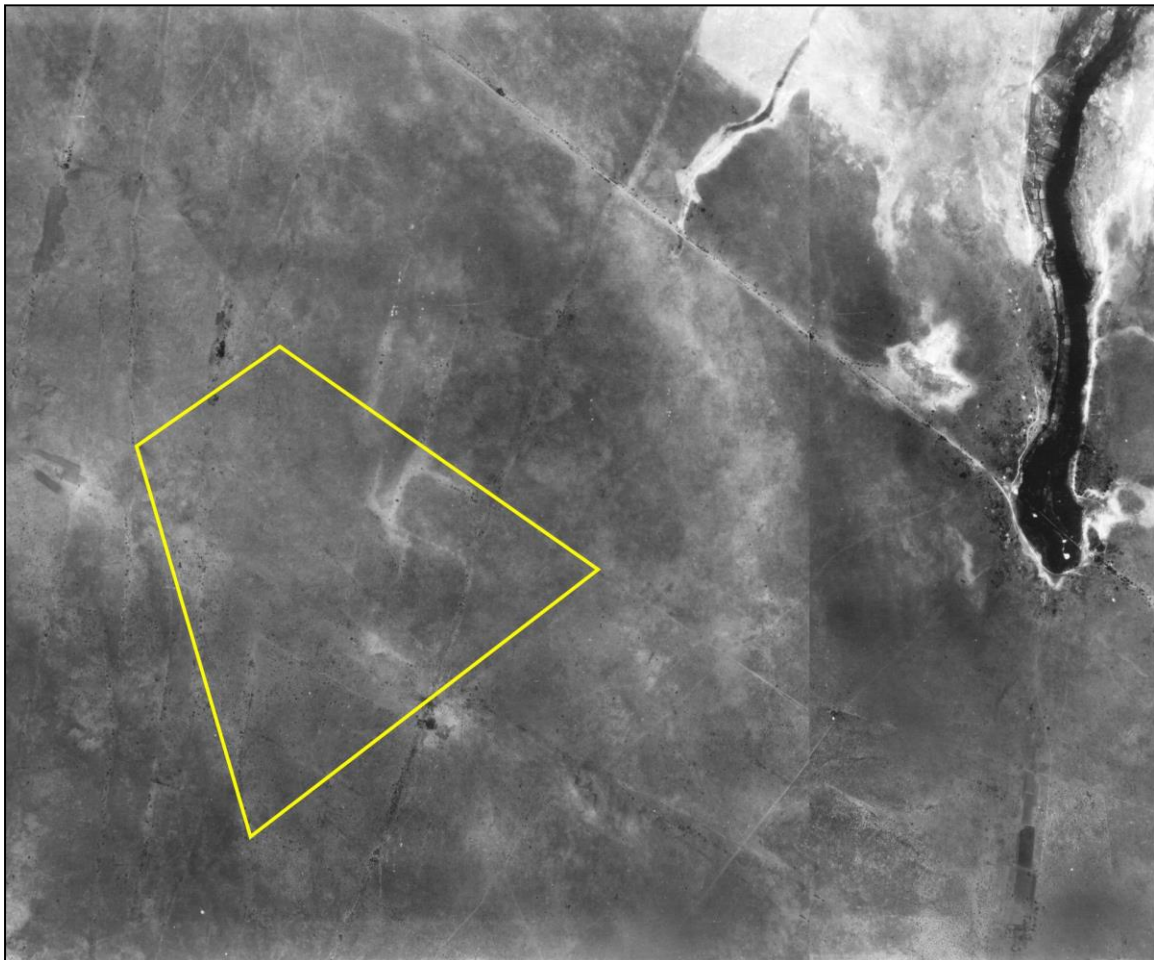


Figure 5-1: An aerial image of Annfield dating to 1944 indicating the location of the subject farm (yellow outlines) during the early 20<sup>th</sup> century. Note the apparent absence of man-made structures on the farm property.

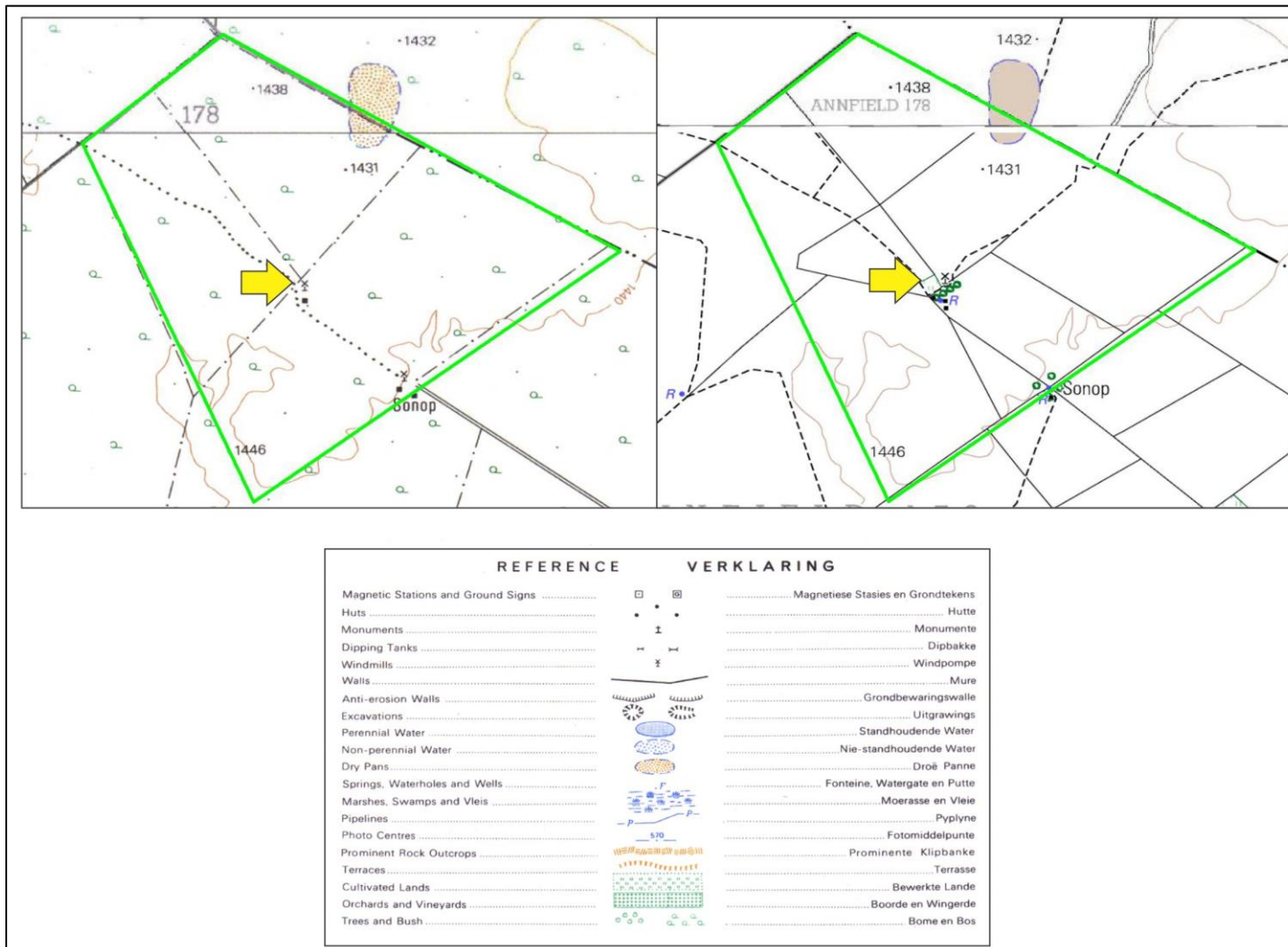


Figure 5-2: Historical topographic maps of Annfield dating to 1973 (left) and 2003 (right), indicating the location of the project area (green outline) during the mid to later 20<sup>th</sup> century. A borehole structure and the later location of the farmstead is indicated by the yellow arrows.



## 5.2 The Archaeological Site Survey

An analysis of historical aerial imagery and archive maps of areas subject to this assessment suggests that Annfield remained relatively undeveloped in previous centuries but the project footprint itself seems to have been subjected to more recent farming activities sterilising the area of heritage remains. This inference was confirmed during an archaeological site assessment during which no *in situ* archaeological or heritage remains were encountered within the proposed project footprint. However, a scatter of Stone Age archaeological material was noted along the outer periphery of this zone. The density of the scatter was arbitrarily estimated by placing a one-meter drawing frame, sub-divided into quadrants, on a randomly-selected area displaying higher amounts of surface lithics. By plotting the counts of all lithic elements present in the 1x1 metre square relative density per m<sup>2</sup> was established and rated on a scale of low (<10), medium (10-20) and high (>20). This method has been adapted as expedient and non-invasive sampling technique that is particularly useful in value assessment of lithic occurrences during Phase 1 AIA's (see Van Der Ryst 2012). The following observations were made during the site survey:

- **Stone Age** remains occur abundantly in the Kuruman area along areas where locally available raw material for the manufacture of stone tools is available in the geological landscape. Similarly, a low-density scatter of Middle Stone Age tools was found in the proposed expansion area directly north of the project footprint in deep red sands and rock exposures. The artefacts observed include both residue and debris, and formal MSA tools such as scrapers, points, blades, prepared cores and residue flakes. The artefacts were manufactured from banded ironstone and fine-grained dolerite and other Cryptocrystalline Silica (CCS) material. Use wear and marks are clearly visible on formal tools. In most cases, these lithics were found on the surface and their primary context has in all probability been lost compromising their scientific value. The presence of formal tools, cores and debitage implies knapping activity which in turn suggests that the site acted as a regional factory site for prehistoric groups up to the MSA. This interpretation is supported by the occurrence in places of mechanical scarring on large stones and rock outcrops, indicating sourcing of materials for tool manufacture. As the tools occur in low densities and the primary context of the artifacts has in all probability been lost, the site is of low heritage value.



Figure 5-3: View of red sands holding MSA tools on the surface, along the northern expansion area.



Figure 5-4: MSA prepared cores noted in the project area in the expansion area.



Figure 5-5: A blade (left), a scraper (centre) and a broken point (right) from the MSA located in the expansion area.



Figure 5-5: Surface scarring visible on rocks (white arrows), possibly indicating lithic sourcing from the MSA located in the expansion area.

- A frontier zone between the east and the west, the Northwest and Northern Cape landscape contains traces of precolonial **Iron Age Farmer Period** remnants. However, the site inspection produced no Iron Age farmer sites or remains.
- Kimberley and its surroundings have a long and extensive **Colonial Period** settlement history.



From around the first half of the 19th century, the area was frequented by explorers, missionaries and farmers who all contributed to a recent history of contact and conflict. Even though structures dating to Historical Period farming occurs north of the project footprint in features relating to the built environment of the early Historical Period were observed in the project footprint.

- No **graves** or signs of **human burials** were observed in the project. In the rural areas of the Northern Cape Province graves and cemeteries often occur within settlements or around homesteads but this seem not to be the case in Riverton owing to the centralization of burials at the dedicated municipal cemetery. However, the probability of additional and informal human burials encountered during development should not be excluded. If any human bones are found during the course of construction work then they should be reported to an archaeologist and work in the immediate vicinity should cease until the appropriate actions have been carried out by the archaeologist.,

## 6 RESULTS: STATEMENT OF SIGNIFICANCE AND IMPACT RATING

---

### 6.1 Potential Impacts and Significance Ratings<sup>2</sup>

The following section provides a background to the identification and assessment of possible impacts and alternatives, as well as a range of risk situations and scenarios commonly associated with heritage resources management. A guideline for the rating of impacts and recommendation of management actions for areas of heritage potential within the study area is supplied in Section 10.2 of Addendum 3.

#### 6.1.1 General assessment of impacts on resources

Generally, the value and significance of archaeological and other heritage sites might be impacted on by any activity that would result immediately or in the future in the destruction, damage, excavation, alteration, removal or collection from its original position, of any archaeological material or object (as indicated in the National Heritage Resources Act (No 25 of 1999)). Thus, the destructive impacts that are possible in terms of heritage resources would tend to be direct, once-off events occurring during the initial construction period. However, in the long run, the proximity of operations in any given area could result in secondary indirect impacts. The EIA process therefore specifies impact assessment criteria which can be utilised from the perspective of a heritage specialist study which elucidates the overall extent of impacts.

#### 6.1.2 Direct impact rating

**Direct or primary effects** on heritage resources occur at the same time and in the same space as the activity, e.g. loss of historical fabric through demolition work. **Indirect effects or secondary effects** on heritage resources occur later in time or at a different place from the causal activity, or as a result of a complex pathway, e.g. restriction of access to a heritage resource resulting in the gradual erosion of its significance, which is dependent on ritual patterns of access (refer to Section 10.3 in the Addendum for an outline of the relationship between the significance of a heritage context, the intensity of development and the significance of heritage impacts to be expected).

***Cognisant of known site distribution patterns in this section of the Northern Cape Province, and based on general on-site observations and off-site assessments and, notably the fact that the project site have previously been transformed by intensive historical agriculture and farming, the author of this report is of the opinion that the Magogudi Tyre Storage Facilities Annfield Project, will have a minimal (if any) impact on archaeological***

<sup>2</sup> Based on: Winter, S. & Baumann, N. 2005. *Guideline for involving heritage specialists in EIA processes: Edition 1.*

***artefacts, features or structures surviving in primary context, subject to the fact that no previously undetected heritage remains (for example, those in sub-surface deposits) are exposed at any stage of the development.***

## **6.2 Evaluation Impacts**

A number of archaeological and historical studies have been conducted in the Kuruman area which points to a rich and diverse archaeological landscape. The heritage legacy of this area is mostly dominated by Stone Age occurrences. Numerous sites, documenting Earlier, Middle and Later Stone Age habitation occur across the province, mostly in open air locales or in sediments alongside rivers or pans. In addition, a wealth of Later Stone Age rock art sites, most of which are in the form of rock engravings are to be found in the larger landscape. These sites occur on hilltops, slopes, rock outcrops and occasionally in river beds. Sites dating to the Iron Age occur in the north eastern part of the Province but environmental factors delegated that the spread of Iron Age farming westwards from the 17th century was constrained mainly to the area east of the Langeberg Mountains. However, evidence of an Iron Age presence as far as the Kuruman area in the eighteenth century occurs in this area. Moving into recent times, the archaeological record reflects the development of a rich colonial frontier, characterised by, amongst others complex social developments related to the expansion of missions and farms in the area.

### **6.2.1 Archaeology**

A scatter of MSA tools occur in the proposed project footprint in the expansion area. The scatter is generally of low significance and unmitigated impact on some of the sites is expected to be peripheral. In terms of the area's Stone Age it is important to note a concern raised by Morris (2014: unpagged) that a "consistent issue in the assessment of the presence or absence of archaeological deposits ... is the fact that the landscape is often capped by (1) calcrete (not uniformly ancient – Walker et al 2013) and (2) younger Gordonia Formation Aeolian sands (Almond 2014)". As such, subsurface archaeological remains may occur under overlying soils and calcretes where the clearing of topsoils during development activities frequently exposes archaeological deposits.

### **6.2.2 Built Environment**

The project area is situated east of the town of Kuruman where a number of Historical Period buildings and features, monuments and heritage sites are to be found. In the immediate surroundings of the project area, is a farmstead complex dating to the Contemporary Period which will not be impacted on by the proposed development. As such, the project area has no significance in terms of the built environment as old farmsteads or Historical Buildings of structures are absent from the site.

### **6.2.3 Cultural Landscape**

The larger Kuruman area comprises a rich cultural landscape which is typical of the Northwest Province around the Ghaap Plateau with large flat parcels with deep Hutton sands and grasses, areas of undulating hills and flatter plains in-between. This landscape stretches over many kilometres and the proposed project is unlikely to result in a significant impact on the landscape.

### **6.2.4 Graves / Human Burials Sites**

In the rural areas of the Northwest province, graves and cemeteries often occur around farmsteads in family burial grounds but they are also randomly scattered around archaeological and historical settlements. The probability of informal human burials encountered during development should thus not be excluded. In addition, human remains and burials are commonly found close to archaeological sites; they may be found in "lost" graveyards, or occur sporadically anywhere as a result of prehistoric activity, victims of conflict or

crime. It is often difficult to detect the presence of archaeological human remains on the landscape as these burials, in most cases, are not marked at the surface. Human remains are usually observed when they are exposed through erosion. In some instances packed stones or rocks may indicate the presence of informal pre-colonial burials. If any human bones are found during the course of construction work then they should be reported to an archaeologist and work in the immediate vicinity should cease until the appropriate actions have been carried out by the archaeologist. Where human remains are part of a burial they would need to be exhumed under a permit from either SAHRA (for pre-colonial burials as well as burials later than about AD 1500). Should any unmarked human burials/remains be found during the course of construction, work in the immediate vicinity should cease and the find must immediately be reported to the archaeologist, or the South African Heritage Resources Agency (SAHRA). Under no circumstances may burials be disturbed or removed until such time as necessary statutory procedures required for grave relocation have been met

**6.3 Management actions**

Recommendations for relevant heritage resource management actions are vital to the conservation of heritage resources. A general guideline for recommended management actions is included in Section 10.4 of Addendum 3.

**OBJECTIVE:** ensure conservation of heritage resources of significance, prevent unnecessary disturbance and/or destruction of previously undetected heritage receptors.

*No specific action in terms of mitigation is required for the footprint areas of the Magogudi Tyre Storage Facilities Annfield Project. However, the following general procedure is required for the site:*

<b>PROJECT COMPONENT/S</b>	All phases of construction and operation.		
<b>POTENTIAL IMPACT</b>	Damage/destruction of sites.		
<b>ACTIVITY RISK/SOURCE</b>	Digging foundations and trenches into sensitive deposits that are not visible at the surface.		
<b>MITIGATION: TARGET/OBJECTIVE</b>	To locate previously undetected heritage remains / graves as soon as possible after disturbance so as to maximize the chances of successful rescue/mitigation work.		
<b>MITIGATION: ACTION/CONTROL</b>	<b>RESPONSIBILITY</b>	<b>TIMEFRAME</b>	
Fixed Mitigation Procedure ( <b>required</b> )			
<b>Site Monitoring:</b> Regular examination of trenches and excavations.	ECO	Monitor frequently as practically possible.	as possible.
<b>PERFORMANCE INDICATOR</b>	Archaeological sites are discovered and mitigated with the minimum amount of unnecessary disturbance.		
<b>MONITORING</b>	Successful location of sites by person/s monitoring.		



## 7 RECOMMENDATIONS

---

The larger landscape around the project area indicate a rich heritage horizon encompassing Stone Age and Colonial / Historical Period archaeology primarily related to the Diamond Mining industry of the past century and resulting urbanization and industrialization. Locally, the project area has been largely transformed by historical and recent agriculture activities largely sterilising surface and subsurface of heritage remains, especially those dating to pre-colonial and prehistorical times. Cognisance should nonetheless be taken of archaeological material that might be present in surface and sub-surface deposits along drainage lines and in pristine areas. The following recommendations are made based on general observations in the proposed Magogudi Tyre Storage Facilities Annfield Project area:

- A Palaeontological Impact Assessment is recommended where bedrock is to be impacted and, should fossil remains such as fossil fish, reptiles or petrified wood be exposed during construction, these objects should carefully safeguarded and the relevant heritage resources authority (SAHRA) should be notified immediately so that the appropriate action can be taken by a professional palaeontologist.
- A number of MSA lithics, including formal tools such as broken points, scrapers and a blade were noted in the project area in the proposed expansion area north of the footprint. However, the low density of the scatter combined with the generally transformed nature of the local landscape which has resulted in a loss of primary context, has largely removed the scientific value of the artefacts. However, it is recommended that any development activities be monitored in order to avoid the destruction of previously undetected Stone Age occurrences.
- Considering the localised nature of heritage remains, the general monitoring of the development progress by an ECO or by the heritage specialist is recommended for all stages of the project. Should any subsurface palaeontological, archaeological or historical material, or burials be exposed during construction activities, all activities should be suspended and the archaeological specialist should be notified immediately.
- It is essential that cognisance be taken of the larger archaeological landscape of the area in order to avoid the destruction of previously undetected heritage sites. It should be stated that it is likely that further undetected archaeological remains might occur elsewhere in the Study Area along water sources and drainage lines, fountains and pans would often have attracted human activity in the past. Also, since Stone Age material seems to originate from below present soil surfaces in eroded areas, the larger landscape should be regarded as potentially sensitive in terms of possible subsurface deposits. Burials and historically significant structures dating to the Colonial Period occur on farms in the area and these resources should be avoided during all phases of construction and development, including the operational phases of the development.

In addition to these site-specific recommendations, careful cognizance should be taken of the following:

- As Palaeontological remains occur where bedrock has been exposed, all geological features should be regarded as sensitive.
- Water sources such as drainage lines, fountains and pans would often have attracted human activity in the past. As Stone Age material occur in the larger landscape, such resources should be regarded as potentially sensitive in terms of possible subsurface deposits.

## 8 GENERAL COMMENTS AND CONDITIONS

---

This AIA report serves to confirm the extent and significance of the heritage landscape of the proposed Magogudi Tyre Storage Facilities Annfield Project area. The larger heritage horizon encompasses rich and diverse archaeological landscapes and cognisance should be taken of heritage resources and archaeological material that might be present in surface and sub-surface deposits. If, during construction, any possible archaeological material culture discoveries are made, the operations must be stopped and a qualified archaeologist be contacted for an assessment of the find. Such material culture might include:

- Formal Earlier Stone Age stone tools.
- Formal MSA stone tools.
- Formal LSA stone tools.
- Potsherds
- Iron objects.
- Beads made from ostrich eggshell and glass.
- Ash middens and cattle dung deposits and accumulations.
- Faunal remains.
- Human remains/graves.
- Stone walling or any sub-surface structures.
- Historical glass, tin or ceramics.
- Fossils.

If such sites were to be encountered or impacted by any proposed developments, recommendations contained in this report, as well as endorsement of mitigation measures as set out by AMAFA, SAHRA, the National Resources Act and the CRM section of ASAPA will be required. It must be emphasised that the conclusions and recommendations expressed in this archaeological heritage sensitivity investigation are based on the visibility of archaeological sites/features and may not therefore, represent the area's complete archaeological legacy. Many sites/features may be covered by soil and vegetation and might only be located during sub-surface investigations. If subsurface archaeological deposits, artefacts or skeletal material were to be recovered in the area during construction activities, all activities should be suspended and the archaeological specialist should be notified immediately (**cf. NHRA (Act No. 25 of 1999)**, Section 36 (6)). It must also be clear that Archaeological Specialist Reports will be assessed by the relevant heritage resources authority (SAHRA).

## 9 BIBLIOGRAPHY

---

- Bergh, J.S. 1999. Geskiedenisatlas van Suid-Afrika: die vier noordelike provinsies. Pretoria: J.L. van Schaik
- Beaumont, P & Morris, D. 1990. Guide to archaeological sites in the Northern Cape. McGregor Museum, Kimberley
- Beaumont, P.B., 2004. Kathu Pan and Kathu Townlands/Uitkoms. In: Morris, D. & Beaumont, P.B. (Eds.), Archaeology in the Northern Cape: Some Key Sites. Southern African Association for Archaeologists Postconference Excursion, Kimberley, McGregor Museum: pp. 50–53;
- Bergh, J.S. 1999. Geskiedenisatlas van Suid-Afrika: die vier noordelike provinsies. Pretoria: J.L. van Schaik
- Birkholtz, P. 2011. Heritage Impact Assessment: Proposed Pering Mining Project, Located on the Farm Pering Mine 1023 HN, Reivilo, North West Province. Pretoria: PGS
- Breutz, P. L. 1959. The tribes of Vryburg district. Ethnological Publications No. 46. Pretoria: Government Printer.
- Curnoe, D et al. 2005. Beyond Taung: Palaeoanthropological research at Groot Kloof, Ghaap Escarpment, Northern Cape Province, South Africa. Nyame Akuma Bulletin of the Society of Africanist Archaeologists, December 2005:64
- Curnoe, D et al. 2006. Discovery of Middle Pleistocene fossil and stone tool-bearing deposits at Groot Kloof, Ghaap escarpment, Northern Cape province. South African Journal of Science **102**, May/June 2006
- Deacon, J. 1996. Archaeology for Planners, Developers and Local Authorities. National Monuments Council. Publication no. P021E.
- Deacon, J. 1997. Report: Workshop on Standards for the Assessment of Significance and Research Priorities for Contract Archaeology. In: Newsletter No 49, Sept 1998. Association for Southern African Archaeologists.
- Denbow, J.R. 1979. *Cenchrus ciliaris*: an ecological indicator of Iron Age middens using aerial photography in eastern Botswana. South African Journal of Science 75:405–408
- Evers, T.M. 1988. The recognition of Groups in the Iron Age of Southern Africa. PhD thesis. Johannesburg: University of the Witwatersrand.
- Hall, M. 1987. The Changing Past :Farmers, Kings & Traders in Southern Africa 200 – 1860 Cape Town, Johannesburg: David Philip
- Hall, M. 1996. Archaeology Africa. Cape Town, Johannesburg: David Philip
- Henning, B. 2013. An Environmental Report on the Ecology (flora and fauna) for the for the proposed

Renewable Energy Generation Project on Portion 1 of the Farm Kangkatjes 919 HN. Pretoria: AGES Gauteng (Pty)Ltd.

Huffman, T.N. 2002. Regionality in the Iron Age: the case of the Sotho-Tswana. Southern African Humanities. Vol 14. Pietermaritzburg.

Huffman, T.N. 2007. Handbook to the Iron Age. Pietermaritzburg: University of Kwazulu-Natal Press  
Kruger, N. 2012. Sishen Western Waste Rock Dumps: Sishen Iron Ore Mine, Kgalagadi District Municipality, Northern Cape Province. Phase 1 Archaeological Impact Assessment Report. Pretoria: AGES Gauteng (Pty)Ltd.

Humphreys, A.J. (2009 reproduced). A Prehistoric Frontier in the Northern Cape and the Western Orange Free State Archaeological Evidence in Interaction and Ideological Change

Kruger, N. 2013. Archaeological Impact Assessment (AIA) study of Portion 1 of the farm Kangkatjes 919 HN, for the proposed Vidigenix 2 Solar Park in the Greater Taung Local Municipality, Dr Ruth Segomotsi Mompoti District Municipality, North West Province. Pretoria: AGES

Morris, D. 1990a. Driekopseiland. In Beaumont, P.B. & Morris, D. (eds.) Guide to Archaeological Sites in the Northern Cape. Kimberley: McGregor Museum.

Morris, D. 1990b. Klipfontein: Bushman's Fountain Rock Engraving Site. In Beaumont, P.B. & Morris, D. (eds.) Guide to Archaeological Sites in the Northern Cape. Kimberley: McGregor Museum.

Morris, D. 2004. Tsantsabane: the Blinkklipkop specularite mine, and Doornfontein. In: Morris, D and Beaumont, P. Archaeology in the Northern Cape: some key sites. Kimberley: McGregor Museum, 54 – 60.

Morris, D. 2005. Report on a Phase 1 Archaeological Assessment of proposed mining areas on the farms Ploegfontein, Klipbankfontein, Welgevonden, Leeuwfontein, Wolhaarkop and Kapstevél, west of Postmasburg, Northern Cape. Unpublished Report.

Morris, D. 2006. Archaeological and Heritage Impact Assessment at the claim of Mr M.M. Nyaba, Erf 687 near Barkly West, Northern Cape. Unpublished Report.

Phillipson, D.W. 1985. African Archaeology (second edition). Cambridge: Cambridge University Press

Renfrew, C & Bahn, P. 1991. Archaeology: Theories, Methods and Practice USA: Thames & Hudson

Swanepoel, N. et al (Eds.) 2008. Five hundred years rediscovered. Johannesburg: Wits University Press

Soriano, S, Villa, P & Wadley, L. 2007. Blade technology and tool forms in the Middle Stone Age of South Africa: the Howiesons Poort and post-Howiesons Poort at Rose Cottage Cave. Journal of Archaeological Science 34:681-703.

Van der Ryst, M.M & Küsel, S. 2012. Phase 2 Report on Middle Stone Age localities on the farm Zandkopsdrift 357, Garies District, Northern Cape Province. Pretoria: Habitat Landscape Architects.

Van Schalkwyk, J. 2011. Heritage impact assessment for the proposed development of photovoltaic power plants on five different locations in Northwest and Northern Cape Provinces. Pretoria: NCHM

Van Warmelo, N.J. 1935. A Preliminary Survey of the Bantu Tribes of South Africa. Pretoria: Government Printer.

Wilke, D. 1993. Van delwerskamp tot dorp : Delportshoop, 1871-1931. Tesis (M.A.) University van Port Elizabeth, 1993.

Winter, S. & Baumann, N. 2005. Guideline for involving heritage specialists in EIA processes: Edition 1. CSIR Report No ENV-S-C 2005 053 E. Republic of South Africa, Provincial Government of the Western Cape, Department of Environmental Affairs & Development Planning, Cape Town.

Wilkins, J. & Chazan, M. 2012. Blade production ~500 thousand years ago at Kathu Pan 1, South Africa: support for a multiple origins hypothesis for early Middle Pleistocene blade technology. Journal of Archaeological Science

Human Tissue Act and Ordinance 7 of 1925, Government Gazette, Cape Town

National Resource Act No.25 of 1999, Government Gazette, Cape Town

SAHRA, 2005. Minimum Standards for the Archaeological and the Palaeontological Components of Impact Assessment Reports, Draft version 1.4.

<http://www.newscientist.com/article/dn22508-first-stonetipped-spear-thrown-earlier-than-thought.html>

Accessed 2019-05-20

<http://southafricanpalaeocaves.files.wordpress.com/>

Accessed 2019-05-20

<http://csg.dla.gov.za/index.html>

Accessed 2019-05-20

<http://www.thepresidency.gov.za/pebble.asp?relid=7643>

Accessed 2019-05-20



## 10 ADDENDUM 1: HERITAGE LEGISLATION BACKGROUND

---

### 10.1 CRM: Legislation, Conservation and Heritage Management

The broad generic term Cultural Heritage Resources refers to any physical and spiritual property associated with past and present human use or occupation of the environment, cultural activities and history. The term includes sites, structures, places, natural features and material of palaeontological, archaeological, historical, aesthetic, scientific, architectural, religious, symbolic or traditional importance to specific individuals or groups, traditional systems of cultural practice, belief or social interaction.

#### 10.1.1 Legislation regarding archaeology and heritage sites

The South African Heritage Resources Agency (SAHRA) and their provincial offices aim to conserve and control the management, research, alteration and destruction of cultural resources of South Africa. It is therefore vitally important to adhere to heritage resource legislation at all times.

##### d. National Heritage Resources Act No 25 of 1999, section 35

According to the National Heritage Resources Act of 1999 a historical site is any identifiable building or part thereof, marker, milestone, gravestone, landmark or tell older than 60 years. This clause is commonly known as the "60-years clause". Buildings are amongst the most enduring features of human occupation, and this definition therefore includes all buildings older than 60 years, modern architecture as well as ruins, fortifications and Iron Age settlements. "Tell" refers to the evidence of human existence which is no longer above ground level, such as building foundations and buried remains of settlements (including artefacts).

The Act identifies heritage objects as:

- objects recovered from the soil or waters of South Africa including archaeological and palaeontological objects, meteorites and rare geological specimens
- visual art objects
- military objects
- numismatic objects
- objects of cultural and historical significance
- objects to which oral traditions are attached and which are associated with living heritage
- objects of scientific or technological interest
- any other prescribed category

With regards to activities and work on archaeological and heritage sites this Act states that:

*"No person may alter or demolish any structure or part of a structure which is older than 60 years without a permit by the relevant provincial heritage resources authority."* (34. [1] 1999:58)

and

*"No person may, without a permit issued by the responsible heritage resources authority-*

- (d) *destroy, damage, excavate, alter, deface or otherwise disturb any archaeological or palaeontological site or any meteorite;*
- (e) *destroy, damage, excavate, remove from its original position, collect or own any archaeological or palaeontological material or object or any meteorite;*

- (f) *trade in, sell for private gain, export or attempt to export from the Republic any category of archaeological or palaeontological material or object, or any meteorite; or*
- (g) *bring onto or use at an archaeological or palaeontological site any excavation equipment or any equipment which assist in the detection or recovery of metals or archaeological and palaeontological material or objects, or use such equipment for the recovery of meteorites. (35. [4] 1999:58)."*

and

*"No person may, without a permit issued by SAHRA or a provincial heritage resources agency-*

- (h) *destroy, damage, alter, exhume or remove from its original position or otherwise disturb the grave of a victim of conflict, or any burial ground or part thereof which contains such graves;*
- (i) *destroy, damage, alter, exhume, remove from its original position or otherwise disturb any grave or burial ground older than 60 years which is situated outside a formal cemetery administered by a local authority;*
- (j) *bring onto or use at a burial ground or grave referred to in paragraph (a) or (b) and excavation equipment, or any equipment which assists in the detection or recovery of metals (36. [3] 1999:60)."*

#### **e. Human Tissue Act of 1983 and Ordinance on the Removal of Graves and Dead Bodies of 1925**

Graves 60 years or older are heritage resources and fall under the jurisdiction of both the National Heritage Resources Act and the Human Tissues Act of 1983. However, graves younger than 60 years are specifically protected by the Human Tissues Act (Act 65 of 1983) and the Ordinance on the Removal of Graves and Dead Bodies (Ordinance 7 of 1925) as well as any local and regional provisions, laws and by-laws. Such burial places also fall under the jurisdiction of the National Department of Health and the Provincial Health Departments. Approval for the exhumation and re-burial must be obtained from the relevant Provincial MEC as well as the relevant Local Authorities.

#### **10.1.2 Background to HIA and AIA Studies**

South Africa's unique and non-renewable archaeological and palaeontological heritage sites are 'generally' protected in terms of the National Heritage Resources Act (Act No 25 of 1999, section 35) and may not be disturbed at all without a permit from the relevant heritage resources authority. Heritage sites are frequently threatened by development projects and both the environmental and heritage legislation require impact assessments (HIAs & AIAs) that identify all heritage resources in areas to be developed. Particularly, these assessments are required to make recommendations for protection or mitigation of the impact of the sites. HIAs and AIAs should be done by qualified professionals with adequate knowledge to (a) identify all heritage resources including archaeological and palaeontological sites that might occur in areas of developed and (b) make recommendations for protection or mitigation of the impact on the sites.

The National Heritage Resources Act (Act No. 25 of 1999, section 38) provides guidelines for Cultural Resources Management and prospective developments:

*"38. (1) Subject to the provisions of subsections (7), (8) and (9), any person who intends to undertake a*

development categorised as:

- (a) the construction of a road, wall, powerline, pipeline, canal or other similar form of linear development or barrier exceeding 300m in length;
- (b) the construction of a bridge or similar structure exceeding 50m in length;
- (c) any development or other activity which will change the character of a site:
  - (i) exceeding 5 000 m<sup>2</sup> in extent; or
  - (ii) involving three or more existing erven or subdivisions thereof; or
  - (iii) involving three or more erven or divisions thereof which have been consolidated within the past five years; or
  - (iv) the costs of which will exceed a sum set in terms of regulations by SAHRA or a provincial heritage resources authority;
- (d) the re-zoning of a site exceeding 10 000 m<sup>2</sup> in extent; or
- (e) any other category of development provided for in regulations by SAHRA or a provincial heritage resources authority,

must at the very earliest stages of initiating such a development, notify the responsible heritage resources authority and furnish it with details regarding the location, nature and extent of the proposed development.”

And:

“The responsible heritage resources authority must specify the information to be provided in a report required in terms of subsection (2)(a): Provided that the following must be included:

- (k) The identification and mapping of all heritage resources in the area affected;
- (l) an assessment of the significance of such resources in terms of the heritage assessment criteria set out in section 6(2) or prescribed under section 7;
- (m) an assessment of the impact of the development on such heritage resources;
- (n) an evaluation of the impact of the development on heritage resources relative to the sustainable social and economic benefits to be derived from the development;
- (o) the results of consultation with communities affected by the proposed development and other interested parties regarding the impact of the development on heritage resources;
- (p) if heritage resources will be adversely affected by the proposed development, the consideration of alternatives; and
- (q) plans for mitigation of any adverse effects during and after the completion of the proposed development (38. [3] 1999:64).”

Consequently, section 35 of the Act requires Heritage Impact Assessments (HIAs) or Archaeological Impact Assessments (AIAs) to be done for such developments in order for all heritage resources, that is, all places or objects of aesthetics, architectural, historic, scientific, social, spiritual, linguistic or technological value or significance to be protected. Thus any assessment should make provision for the protection of all these heritage components, including archaeology, shipwrecks, battlefields, graves, and structures older than 60

years, living heritage, historical settlements, landscapes, geological sites, palaeontological sites and objects. Heritage resources management and conservation.

## 10.2 Assessing the Significance of Heritage Resources

Archaeological sites, as previously defined in the National Heritage Resources Act (Act 25 of 1999) are places in the landscape where people have lived in the past – generally more than 60 years ago – and have left traces of their presence behind. In South Africa, archaeological sites include hominid fossil sites, places where people of the Earlier, Middle and Later Stone Age lived in open sites, river gravels, rock shelters and caves, Iron Age sites, graves, and a variety of historical sites and structures in rural areas, towns and cities. Palaeontological sites are those with fossil remains of plants and animals where people were not involved in the accumulation of the deposits. The basic principle of cultural heritage conservation is that archaeological and other heritage sites are valuable, scarce and *non-renewable*. Many such sites are unfortunately lost on a daily basis through development for housing, roads and infrastructure and once archaeological sites are damaged, they cannot be re-created as site integrity and authenticity is permanently lost. Archaeological sites have the potential to contribute to our understanding of the history of the region and of our country and continent. By preserving links with our past, we may not be able to revive lost cultural traditions, but it enables us to appreciate the role they have played in the history of our country.

### - Categories of significance

Rating the significance of archaeological sites, and consequently grading the potential impact on the resources is linked to the significance of the site itself. The significance of an archaeological site is based on the amount of deposit, the integrity of the context, the kind of deposit and the potential to help answer present research questions. Historical structures are defined by Section 34 of the National Heritage Resources Act, 1999, while other historical and cultural significant sites, places and features, are generally determined by community preferences. The guidelines as provided by the NHRA (Act No. 25 of 1999) in Section 3, with special reference to subsection 3 are used when determining the cultural significance or other special value of archaeological or historical sites. In addition, ICOMOS (the Australian Committee of the International Council on Monuments and Sites) highlights four cultural attributes, which are valuable to any given culture:

#### - *Aesthetic value:*

Aesthetic value includes aspects of sensory perception for which criteria can and should be stated. Such criteria include consideration of the form, scale, colour, texture and material of the fabric, the general atmosphere associated with the place and its uses and also the aesthetic values commonly assessed in the analysis of landscapes and townscape.

#### - *Historic value:*

Historic value encompasses the history of aesthetics, science and society and therefore to a large extent underlies all of the attributes discussed here. Usually a place has historical value because of some kind of influence by an event, person, phase or activity.

#### - *Scientific value:*

The scientific or research value of a place will depend upon the importance of the data involved, on its rarity, quality and on the degree to which the place may contribute further substantial information.

#### - *Social value:*

Social value includes the qualities for which a place has become a focus of spiritual, political, national or other cultural sentiment to a certain group.

It is important for heritage specialist input in the EIA process to take into account the heritage management structure set up by the NHR Act. It makes provision for a 3-tier system of management including the South Africa Heritage Resources Agency (SAHRA) at a national level, Provincial Heritage Resources Authorities (PHRAs) at a provincial and the local authority. The Act makes provision for two types or forms of protection of heritage resources; i.e. formally protected and generally protected sites:

**Formally protected sites:**

- Grade 1 or national heritage sites, which are managed by SAHRA
- Grade 2 or provincial heritage sites, which are managed by the provincial HRA (MP-PHRA).
- Grade 3 or local heritage sites.

**Generally protected sites:**

- Human burials older than 60 years.
- Archaeological and palaeontological sites.
- Shipwrecks and associated remains older than 60 years.
- Structures older than 60 years.

With reference to the evaluation of sites, the certainty of prediction is definite, unless stated otherwise and if the significance of the site is rated high, the significance of the impact will also result in a high rating. The same rule applies if the significance rating of the site is low. The significance of archaeological sites is generally ranked into the following categories.

Significance	Rating Action
No significance: sites that do not require mitigation.	None
Low significance: sites, which may require mitigation.	2a. Recording and documentation (Phase 1) of site; no further action required 2b. Controlled sampling (shovel test pits, auguring), mapping and documentation (Phase 2 investigation); permit required for sampling and destruction
Medium significance: sites, which require mitigation.	3. Excavation of representative sample, C14 dating, mapping and documentation (Phase 2 investigation); permit required for sampling and destruction [including 2a & 2b]
High significance: sites, where disturbance should be avoided.	4a. Nomination for listing on Heritage Register (National, Provincial or Local) (Phase 2 & 3 investigation); site management plan; permit required if utilised for education or tourism
High significance: Graves and burial places	4b. Locate demonstrable descendants through social consulting; obtain permits from applicable legislation, ordinances and regional by-laws; exhumation and reinterment [including 2a, 2b & 3]

Furthermore, the significance of archaeological sites was based on six main criteria:

- Site integrity (i.e. primary vs. secondary context),
- Amount of deposit, range of features (e.g., stonewalling, stone tools and enclosures),
- Density of scatter (dispersed scatter),
- Social value,
- Uniqueness, and
- Potential to answer current and future research questions.



**11 ADDENDUM 2: CONVENTIONS USED TO ASSESS THE SIGNIFICANCE OF HERITAGE**

**11.1 Site Significance Matrix**

According to the NHRA, Section 2(vi) the **significance** of heritage sites and artefacts is determined by its aesthetic, architectural, historical, scientific, social, spiritual, linguistic or technical value in relation to the uniqueness, condition of preservation and research potential. It must be kept in mind that the various aspects are not mutually exclusive, and that the evaluation of any site is done with reference to any number of these. The following matrix is used for assessing the significance of each identified site/feature.

2. SITE EVALUATION			
2.1 Heritage Value (NHRA, section 2 [3])	High	Medium	Low
It has importance to the community or pattern of South Africa’s history or pre-colonial history.			
It possesses unique, uncommon, rare or endangered aspects of South Africa’s natural or cultural heritage.			
It has potential to yield information that will contribute to an understanding of South Africa’s natural and cultural heritage.			
It is of importance in demonstrating the principle characteristics of a particular class of South Africa’s natural or cultural places or objects.			
It has importance in exhibiting particular aesthetic characteristics valued by a particular community or cultural group.			
It has importance in demonstrating a high degree of creative or technical achievement at a particular period.			
It has marked or special association with a particular community or cultural group for social, cultural or spiritual reasons (sense of place).			
It has strong or special association with the life or work of a person, group or organisation of importance in the history of South Africa.			
It has significance through contributing towards the promotion of a local sociocultural identity and can be developed as a tourist destination.			
It has significance relating to the history of slavery in South Africa.			
It has importance to the wider understanding of temporal changes within cultural landscapes, settlement patterns and human occupation.			
2.2 Field Register Rating			
National/Grade 1 [should be registered, retained]			
Provincial/Grade 2 [should be registered, retained]			
Local/Grade 3A [should be registered, mitigation not advised]			
Local/Grade 3B [High significance; mitigation, partly retained]			
Generally Protected A [High/Medium significance, mitigation]			
Generally protected B [Medium significance, to be recorded]			
Generally Protected C [Low significance, no further action]			
2.3 Sphere of Significance	High	Medium	Low
International			
National			
Provincial			
Local			
Specific community			

## 11.2 Impact Assessment Criteria

The following table provides a guideline for the rating of impacts and recommendation of management actions for sites of heritage potential.

### Significance of the heritage resource

This is a statement of the nature and degree of significance of the heritage resource being affected by the activity. From a heritage management perspective, it is useful to distinguish between whether the significance is embedded in the physical fabric or in associations with events or persons or in the experience of a place; i.e. its visual and non-visual qualities. This statement is a primary informant to the nature and degree of significance of an impact and thus needs to be thoroughly considered. Consideration needs to be given to the significance of a heritage resource at different scales (i.e. site-specific, local, regional, national or international) and the relationship between the heritage resource, its setting and its associations.

### Nature of the impact

This is an assessment of the nature of the impact of the activity on a heritage resource, with some indication of its positive and/or negative effect/s. It is strongly informed by the statement of resource significance. In other words, the nature of the impact may be historical, aesthetic, social, scientific, linguistic or architectural, intrinsic, associational or contextual (visual or non-visual). In many cases, the nature of the impact will include more than one value.

### Extent

Here it should be indicated whether the impact will be experienced:

- On a site scale, i.e. extend only as far as the activity;
- Within the immediate context of a heritage resource;
- On a local scale, e.g. town or suburb
- On a metropolitan or regional scale; or
- On a national/international scale.

### Duration

Here it should be indicated whether the lifespan of the impact will be:

- Short term, (needs to be defined in context)
- Medium term, (needs to be defined in context)
- Long term where the impact will persist indefinitely, possibly beyond the operational life of the activity, either because of natural processes or by human intervention; or
- Permanent where mitigation either by natural process or by human intervention will not occur in such a way or in such a time span that the impact can be considered transient.

Of relevance to the duration of an impact are the following considerations:

- Reversibility of the impact; and
- Renewability of the heritage resource.

### Intensity

Here it should be established whether the impact should be indicated as:

- Low, where the impact affects the resource in such a way that its heritage value is not affected;
- Medium, where the affected resource is altered but its heritage value continues to exist albeit in a modified way; and
- High, where heritage value is altered to the extent that it will temporarily or permanently be damaged or destroyed.

### Probability

This should describe the likelihood of the impact actually occurring indicated as:

- Improbable, where the possibility of the impact to materialize is very low either because of design or historic experience;
- Probable, where there is a distinct possibility that the impact will occur;
- Highly probable, where it is most likely that the impact will occur; or
- Definite, where the impact will definitely occur regardless of any mitigation measures

### Confidence

This should relate to the level of confidence that the specialist has in establishing the nature and degree of impacts. It relates to the level and reliability of information, the nature and degree of consultation with I&AP's and the dynamic of the broader socio-political context.

- High, where the information is comprehensive and accurate, where there has been a high degree of consultation and the socio-political context is relatively stable.
- Medium, where the information is sufficient but is based mainly on secondary sources, where there has been a limited targeted consultation and socio-political context is fluid.
- Low, where the information is poor, a high degree of contestation is evident and there is a state of socio-political flux.

**Impact Significance**

The significance of impacts can be determined through a synthesis of the aspects produced in terms of the nature and degree of heritage significance and the nature, duration, intensity, extent, probability and confidence of impacts and can be described as:

- Low; where it would have a negligible effect on heritage and on the decision
- Medium, where it would have a moderate effect on heritage and should influence the decision.
- High, where it would have, or there would be a high risk of, a big effect on heritage. Impacts of high significance should have a major influence on the decision;
- Very high, where it would have, or there would be high risk of, an irreversible and possibly irreplaceable negative impact on heritage. Impacts of very high significance should be a central factor in decision-making.

**11.3 Direct Impact Assessment Criteria**

The following table provides an outline of the relationship between the significance of a heritage context, the intensity of development and the significance of heritage impacts to be expected

HERITAGE CONTEXT	TYPE OF DEVELOPMENT			
	CATEGORY A	CATEGORY B	CATEGORY C	CATEGORY D
<b>CONTEXT 1</b> High heritage Value	Moderate heritage impact expected	High heritage impact expected	Very high heritage impact expected	Very high heritage impact expected
<b>CONTEXT 2</b> Medium to high heritage value	Minimal heritage impact expected	Moderate heritage impact expected	High heritage impact expected	Very high heritage impact expected
<b>CONTEXT 3</b> Medium to low heritage value	Little or no heritage impact expected	Minimal heritage impact expected	Moderate heritage impact expected	High heritage impact expected
<b>CONTEXT 4</b> Low to no heritage value	Little or no heritage impact expected	Little or no heritage impact expected	Minimal heritage value expected	Moderate heritage impact expected
<b>NOTE: A DEFAULT "LITTLE OR NO HERITAGE IMPACT EXPECTED" VALUE APPLIES WHERE A HERITAGE RESOURCE OCCURS OUTSIDE THE IMPACT ZONE OF THE DEVELOPMENT.</b>				
HERITAGE CONTEXTS	CATEGORIES OF DEVELOPMENT			
<p><b>Context 1:</b> Of high intrinsic, associational and contextual heritage value within a national, provincial and local context, i.e. formally declared or potential Grade 1, 2 or 3A heritage resources</p> <p><b>Context 2:</b> Of moderate to high intrinsic, associational and contextual value within a local context, i.e. potential Grade 3B heritage resources.</p> <p><b>Context 3:</b></p>	<p><b>Category A: Minimal intensity development</b></p> <ul style="list-style-type: none"> <li>- No rezoning involved; within existing use rights.</li> <li>- No subdivision involved.</li> <li>- Upgrading of existing infrastructure within existing envelopes</li> <li>- Minor internal changes to existing structures</li> <li>- New building footprints limited to less than 1000m<sup>2</sup>.</li> </ul> <p><b>Category B: Low-key intensity development</b></p> <ul style="list-style-type: none"> <li>- Spot rezoning with no change to overall zoning of a site.</li> <li>- Linear development less than 100m</li> </ul>			

<p>Of medium to low intrinsic, associational or contextual heritage value within a national, provincial and local context, i.e. potential Grade 3C heritage resources</p> <p><b>Context 4:</b> Of little or no intrinsic, associational or contextual heritage value due to disturbed, degraded conditions or extent of irreversible damage.</p>	<ul style="list-style-type: none"> <li>- Building footprints between 1000m2-2000m2</li> <li>- Minor changes to external envelop of existing structures (less than 25%)</li> <li>- Minor changes in relation to bulk and height of immediately adjacent structures (less than 25%).</li> </ul> <p><b>Category C: Moderate intensity development</b></p> <ul style="list-style-type: none"> <li>- Rezoning of a site between 5000m2-10 000m2.</li> <li>- Linear development between 100m and 300m.</li> <li>- Building footprints between 2000m2 and 5000m2</li> <li>- Substantial changes to external envelop of existing structures (more than 50%)</li> <li>- Substantial increase in bulk and height in relation to immediately adjacent buildings (more than 50%)</li> </ul> <p><b>Category D: High intensity development</b></p> <ul style="list-style-type: none"> <li>- Rezoning of a site in excess of 10 000m2</li> <li>- Linear development in excess of 300m.</li> <li>- Any development changing the character of a site exceeding 5000m2 or involving the subdivision of a site into three or more erven.</li> <li>- Substantial increase in bulk and height in relation to immediately adjacent buildings (more than 100%)</li> </ul>
--	--

### 11.4 Management and Mitigation Actions

The following table provides a guideline of relevant heritage resources management actions is vital to the conservation of heritage resources.

<p><b>No further action / Monitoring</b></p> <p>Where no heritage resources have been documented, heritage resources occur well outside the impact zone of any development or the primary context of the surroundings at a development footprint has been largely destroyed or altered, no further immediate action is required. Site monitoring during development, by an ECO or the heritage specialist are often added to this recommendation in order to ensure that no undetected heritage\ remains are destroyed.</p> <p><b>Avoidance</b></p> <p>This is appropriate where any type of development occurs within a formally protected or significant or sensitive heritage context and is likely to have a high negative impact. Mitigation is not acceptable or not possible. This measure often includes the change / alteration of development planning and therefore impact zones in order not to impact on resources.</p> <p><b>Mitigation</b></p> <p>This is appropriate where development occurs in a context of heritage significance and where the impact is such that it can be mitigated to a degree of medium to low significance, e.g. the high to medium impact of a development on an archaeological site could be mitigated through sampling/excavation of the remains. Not all negative impacts can be mitigated.</p> <p><b>Compensation</b></p> <p>Compensation is generally not an appropriate heritage management action. The main function of management actions should be to conserve the resource for the benefit of future generations. Once lost it cannot be renewed. The circumstances around the potential public or heritage benefits would need to be exceptional to warrant this type of action, especially in the case of where the impact was high.</p> <p><b>Rehabilitation</b></p> <p>Rehabilitation is considered in heritage management terms as a intervention typically involving the adding of a new heritage layer to enable a new sustainable use. It is not appropriate when the process necessitates the removal of previous historical layers, i.e. restoration of a building or place to the previous state/period. It is an appropriate heritage management action in the following cases:</p> <ul style="list-style-type: none"> <li>- The heritage resource is degraded or in the process of degradation and would benefit from rehabilitation.</li> <li>- Where rehabilitation implies appropriate conservation interventions, i.e. adaptive reuse, repair and maintenance, consolidation and minimal loss of historical fabric.</li> <li>- Where the rehabilitation process will not result in a negative impact on the intrinsic value of the resource.</li> </ul> <p><b>Enhancement</b></p>
--



