

J A van Schalkwyk  
Heritage Consultant  
62 Coetzer Avenue,  
Monument Park  
Pretoria  
0181

29 November 2021

Ms T Ntshingila  
**ACWA POWER**  
[Per e-mail: TNTshingila@acwapower.com]

**To whom it may concern:**

**SPECIALIST OPINION FOR THE NEW INTERNAL COMBUSTION ENGINE (ICE) DEVELOPMENTS ASSOCIATED WITH THE AFRIKAANS AND SOTHO PV PLANT FOR PROJECT DAO (FORMERLY BOKPOORT SOLAR PHOTOVOLTAIC (PV) ENERGY FACILITY) NEAR GROBLERSHOOP, !KHEIS LOCAL MUNICIPALITY, NORTHERN CAPE PROVINCE**

In May 2021, ACWA Power Project DAO (RF) Pty Ltd (hereafter ACWA Power) was issued with seven Environmental Authorisations (EAs) for the development of seven individual 9.9MW Internal Combustion Engines (ICE) on the authorised Pedi, Venda, Zulu, Afrikaans, Ndebele, Swati and Sotho Photovoltaic (PV) Plants on the Remaining Extent (RE) of the Farm Bokpoort 390, located 20km north west of the town of Groblershoop within the !Kheis Local Municipality in the ZF Mgcawu District Municipality, Northern Cape Province. PV can only generate electricity when the weather is favourable. In order to address this need, ACWA Power proposed additional infrastructure ICE within their authorised plants to create flexibility and efficiency within the plants which will enable electricity generation during unfavourable weather conditions.

In September 2020, the Department of Mineral Resources and Energy (DMRE) released a request for proposal as part of the Risk Mitigation Independent Power Producer Procurement Programme to reduce the current load shedding periods being experienced by the country. In responding to the request, ACWA Power submitted a bid for a 150MW (export capacity) PV plant that was bid as "Project DAO" and were successful. A condition in the Request for Proposal required Bidders to not tap into the national grid for power and requires that a reliability test be undertaken at a specified generation rate and time.

However, the DMRE informed bidders that these requirements would be relaxed, and ACWA Power decided to lapse four of the seven ICE EAs, the four EAs that have been lapsed are Zulu, Afrikaans, Sotho, and Swati PV Plant ICE. The DMRE has now confirmed that they are not relaxing the reliability run requirements, and as such, ACWA Power now needs two additional ICE infrastructure to meet these requirements. Each of the ICEs will be subject to its own application for Environmental Authorisation.

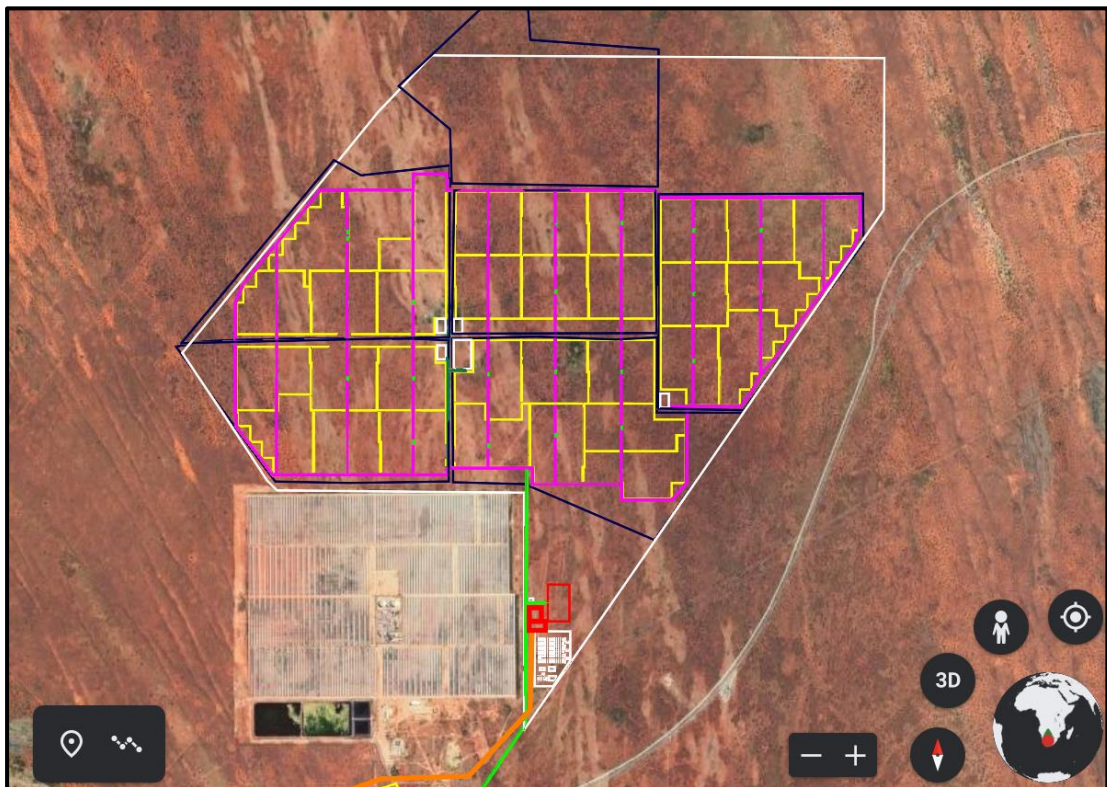
The specifications for each of the ICE associated with the Afrikaans and Sotho PV Plant are provided below:

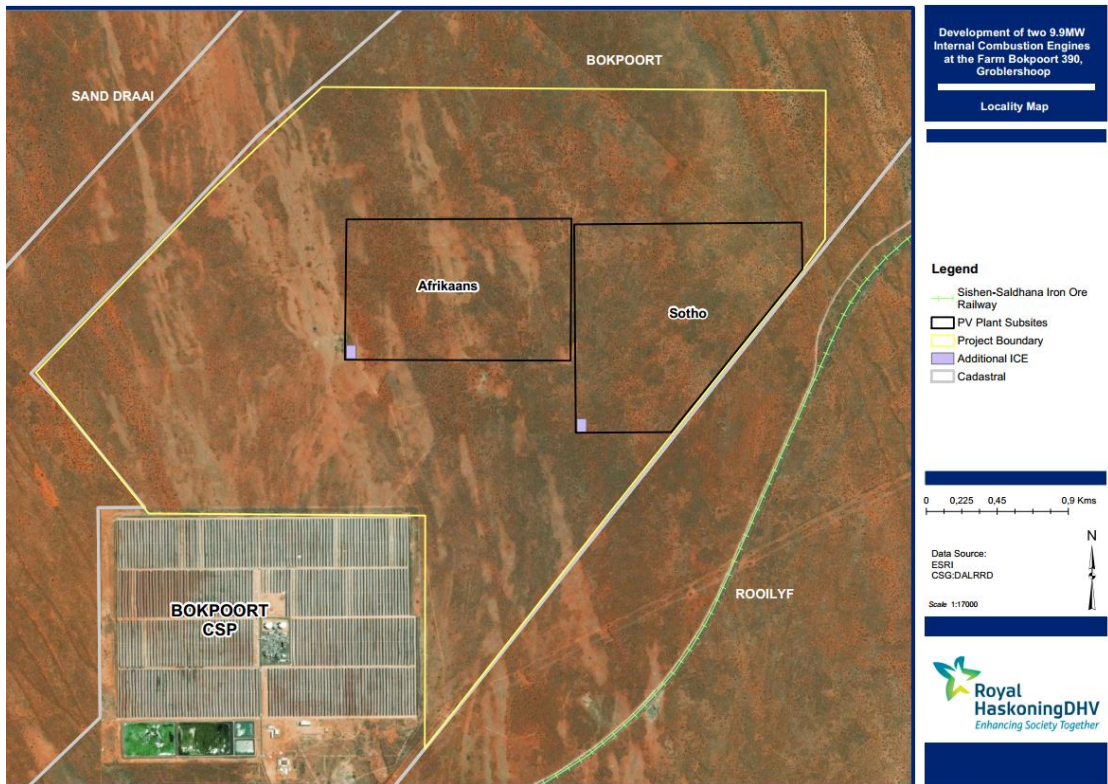
- Generating capacity: 9.9 MW
- Fuel Type: Diesel or Liquefied Petroleum Gas (LPG) or Liquefied Natural Gas (LNG)
- Stack height: 50 - 70 m
- Number of engines for the ICE: 1 (it is subject to the engine size, various load size available in the market)
- Fuel storage tanks: 5 (subject to the tanks sizing/designing)
- Fuel volume: 500 m<sup>3</sup>
- Water requirements: limited water for cooling

- Area size: 0.5 ha

Both options would be implemented within the area that has previously been subjected to a full heritage impact assessment and for which environmental authorisation has been granted.

**We hereby confirm that the proposed amendments will not result in any additional impacts and will not increase the level or nature of the impact, which was initially assessed and considered when application was made for an EA. The significance ratings will remain unchanged and the proposed mitigation and management measures proposed as part of the EIA process will still suffice.**





Location of the proposed new developments within the authorised area

We trust you find the above in order. If there are any uncertainties or additional information required, please feel free to contact the undersigned.

Yours sincerely

J A van Schalkwyk (D Litt et Phil)

- Heritage Consultant: ASAPA Registration No.: 164 - Principal Investigator: Iron Age, Colonial Period, Industrial Heritage.

