



PGS

HERITAGE

SITE VISIT REPORT

INVESTIGATION OF POSSIBLE HERITAGE SITES NEAR ROOSSENEKAL, LIMPOPO PROVINCE

Issue Date: 2017.08.23

Revision No.: 0

Project number: 264HM

Declaration of Independence


The report has been compiled by PGS Heritage (Pty) Ltd, appointed Heritage Specialist for Eskom Holdings SOC Limited. The views stipulated in this report are purely objective and no other interests are displayed during the decision-making processes discussed in this document.

HERITAGE CONSULTANT: PGS Heritage (Pty) Ltd

REPORT COMPILED BY Henk Steyn

CONTACT PERSON: Henk Steyn
Archaeologist
Tel: +27 (0) 12 332 5305
Email: henk@pgsheritage.co.za

SIGNATURE:



ACKNOWLEDGEMENT OF RECEIPT

CLIENT: Eskom Holdings SOC Limited

CONTACT PERSON: Lené Grobbelaar
Senior Environmental Advisor
Eskom Holdings SOC Ltd – Power Delivery Projects
Tel: +27 (0) 11 800 4896
Mob: +27 (0) 82 227 2892
Email: grobbele@eskom.co.za

SIGNATURE:

CONTENTS PAGE

1. INTRODUCTION	4
2. LOCATION.....	4
3. SITE ASSESSMENT.....	6
4. CONCLUSION	8
5. RECOMMENDATIONS.....	8

LIST OF FIGURES

<i>Figure 1 – Locality map.</i>	<i>4</i>
<i>Figure 2 – Satellite image of the location of site.</i>	<i>5</i>
<i>Figure 3 - Location of sites MSS1 & MSS2</i>	<i>5</i>
<i>Figure 4 - LIA Stone walling situated at MSS1 (25.107736 & 29.826620).</i>	<i>6</i>
<i>Figure 5 - LIA Stone walling situated atMSS2 (25.10702 & 29.82561).....</i>	<i>7</i>
<i>Figure 6 - Stone platform/possible grave situated at MSS1 (25.107736 & 29.826620).</i>	<i>7</i>

1. INTRODUCTION

PGS Heritage (Pty) Ltd was appointed by *Eskom Holdings SOC Limited* to assess the occurrence of several heritage sites, including a potential grave at the location of its Monageng/Tubatse switching station near Roossenekal in the Limpopo Province.

2. LOCATION

The switching station is situated at a power line tower position approximately 15km north west of Roossenekal at the following coordinates -25.107736° & 29.826620° . It is located on a portion of the Farm Steynsdrift 145.

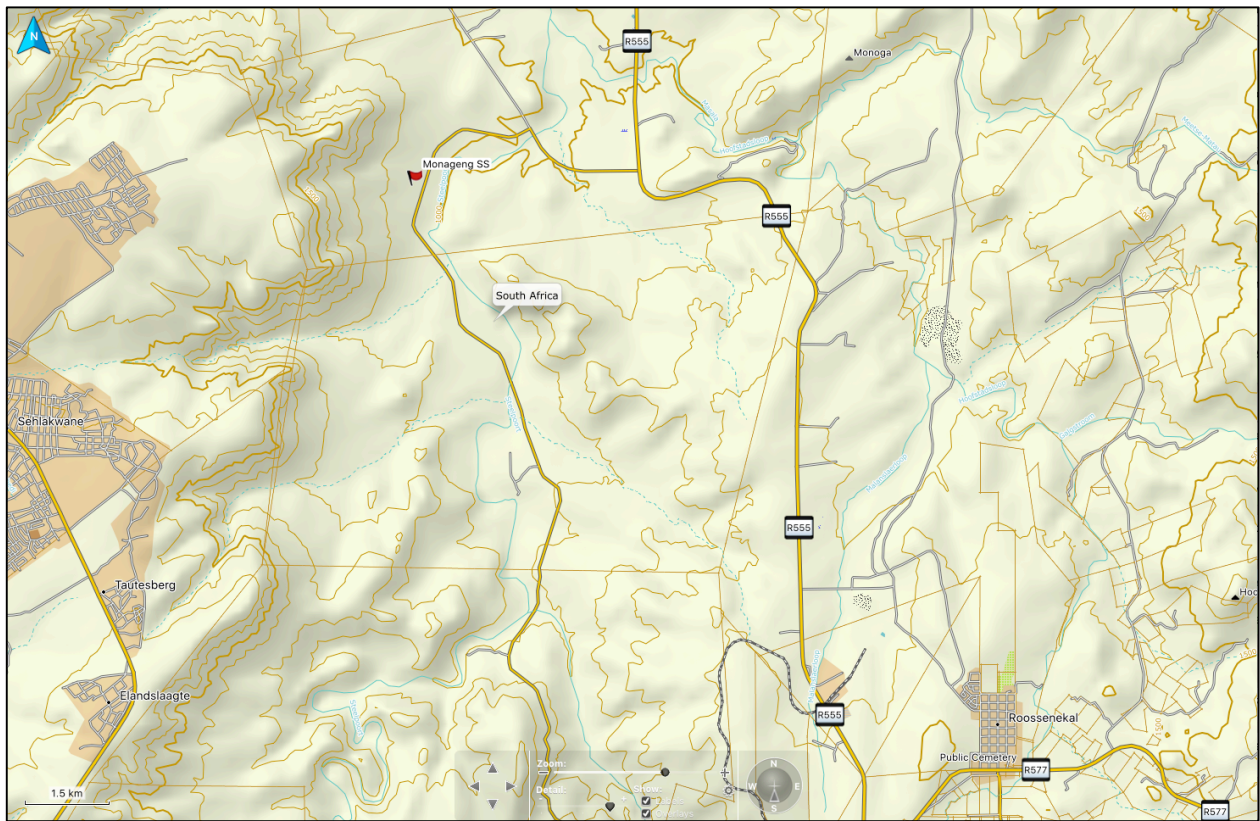


Figure 1 – Locality map.

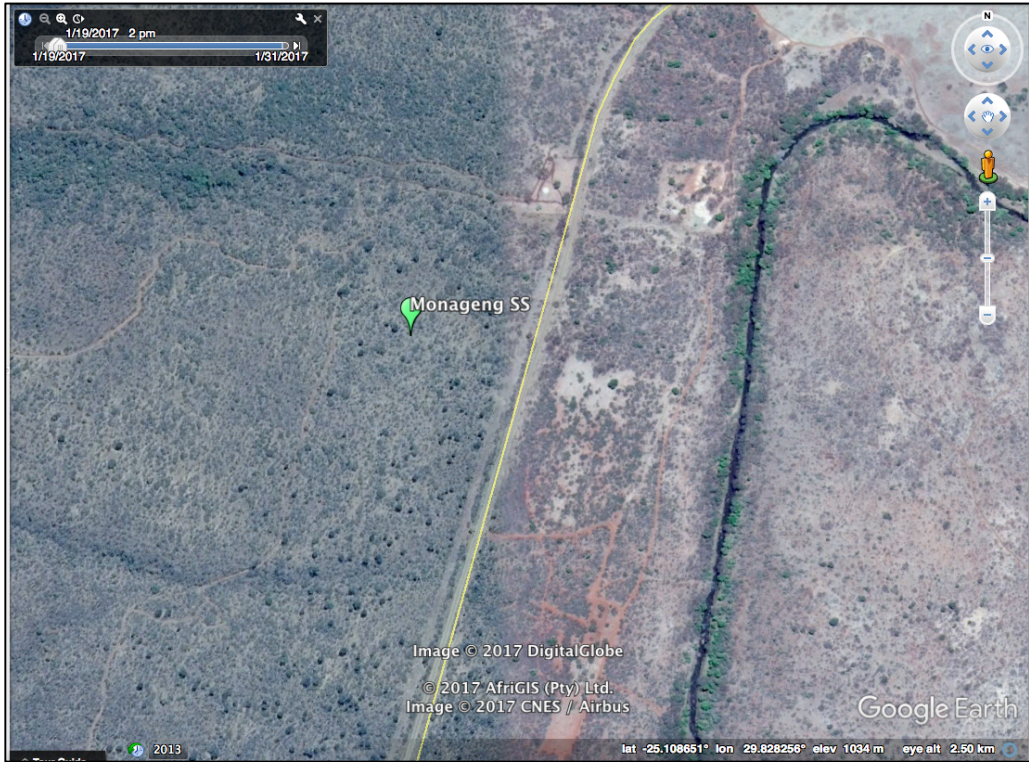


Figure 2 – Satellite image of the location of site.

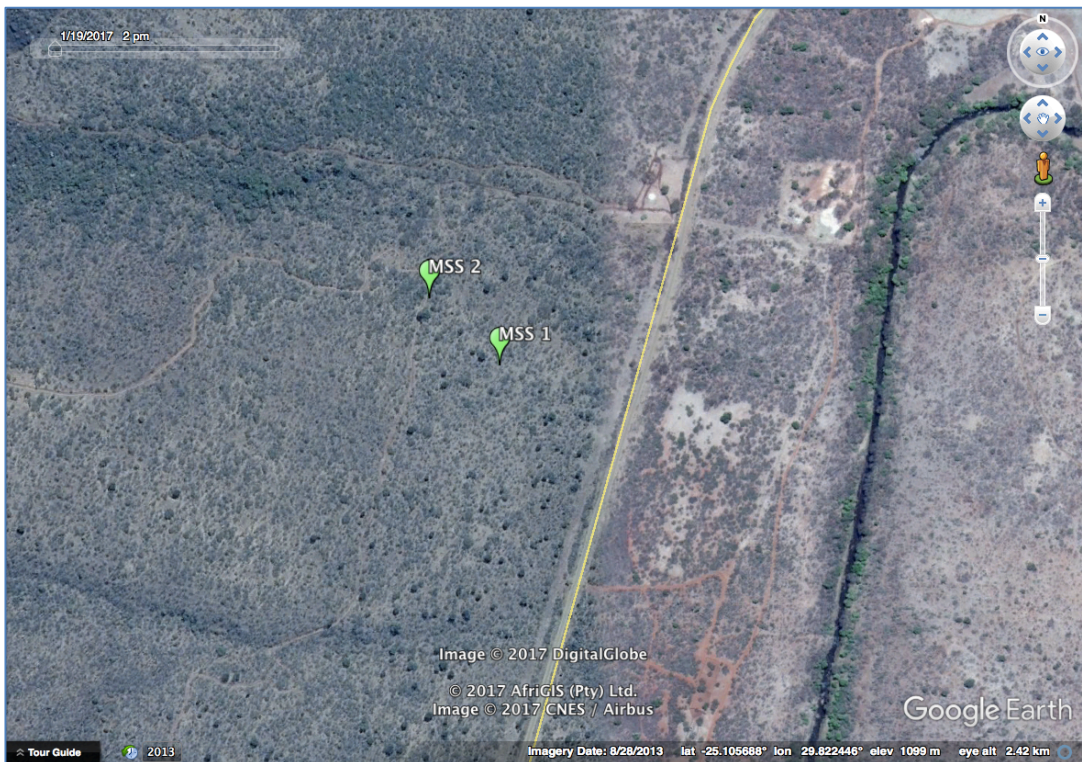


Figure 3 - Location of sites MSS1 & MSS2

3. SITE ASSESSMENT

The site visit took place on 22 August 2017 and was conducted by Mr Henk Steyn from PGS Heritage and Messrs Denash Molefe and Peter Mmamokabi from Eskom.

The site is situated at the foot of a steep mountain and is covered by dense grass and trees. Although the features could be readily identified, overall ground visibility was not good. The following features were noted during the site visit:

- Several low stone walls associated with the Later Iron Age (LIA). These appeared to be scattered throughout the site (Figure 4 & 5). These features have been noted at both locations MSS1 & MSS2 in (Figure 3).
- One large (3m x 1,5m) rectangular stone packed structure. This feature is constructed by large rocks backfilled with smaller stones. Although most probably a platform associated with the surrounding LIA sites, there is a very small possibility that this feature might be a grave (Figure 6). This feature has is situated at location MSS1 (Figure 3).



Figure 4 - LIA Stone walling situated at MSS1 (25.107736 & 29.826620).



Figure 5 - LIA Stone walling situated atMSS2 (25.10702 & 29.82561).



Figure 6 - Stone platform/possible grave situated at MSS1 (25.107736 & 29.826620).

In addition to the site visit, I perused the following documentation provided by Eskom and downloaded from the SAHRIS website:

- A destruction permit issued by SAHRA for Site T12 at the The Tubatse Switching Station (PermitID: 1561). This permit expired on 30/04/2015;
- An excavation permit issued to Mr Anton Pelser (PermitID: 606) for the mitigation of site T12, at the Tubatse Switching Station, dated 20/08/2013;
- An excavation report by Mr Anton Pelser for the above permit, issued in January 2014. This report outlines the archaeological mitigation of sites T12 – T14 as contained by the original Heritage Impact Assessment conducted by JA van Schalkwyk in 2012.

The above documentation is attached to this report as separate documents.

4. CONCLUSION

After comparing the coordinates from the site visit and those in the documentation mentioned above, and considering the evidence from the site visit, the following conclusions was reached:

- The site has already been mitigated by Mr Anton Pelser in 2014. A permit was issued for the mitigation of the larger LIA site, which included the site of the switching station;
- Mr Pelser issued a detailed report describing the mitigation process.
- After the mitigation was completed, Eskom was issued with a destruction permit for the site. This permit however expired on 30/04/2015.

5. RECOMMENDATIONS

I recommend the following:

- That an application be made for the destruction permit to be renewed;
- Once issued, that a heritage specialist be present when the structures are destroyed, especially the large, elongated stone structure situated at MSS1 (25.107736 & 29.826620).
- In the small chance that the structure at MM1 turns out to be a grave, a full grave relocation process will have to be initiated.