



Transnet SOC Limited

**New Multi Product Pipeline
(NMPP) Project**

Final Heritage Audit

2684358-J-A00-AM-ST-004-12

Rev 00





Transnet SOC Limited

**New Multi Product Pipeline
(NMPP) Project**

Final Heritage Audit

June 2013

Umlando: Archaeological Surveys and Heritage Management
PO Box 102532, Meerensee, 3901
Phone/fax: 035-7531785 Fax: 0865445631
Cell: 0836585362





Job title New Multi Product Pipeline (NMPP) Project

Document title 2684358-J-A00-AM-ST-004-12 Heritage Audit

File reference

Document ref 00

Revision	Date	Filename			
		Revision Description			
			Prepared by	Checked by	Approved by
		Name	Gavin Anderson	Louise Anderson	Gavin Anderson
		Signature			
		Filename			
		Description			
			Prepared by	Checked by	Approved by
		Name			
		Signature			
		Filename			
		Description			
			Prepared by	Checked by	Approved by
		Name			
		Signature			
		Filename			
		Description			
			Prepared by	Checked by	Approved by
		Name			
		Signature			
		Filename			

Issue Document Verification with Document





Transnet SOC Limited

**New Multi Product Pipeline
(NMPP) Project**

Heritage Audit

2684358-J-A00-AM-ST-004-12

Rev 00

Sign-Off

Organisation	Name	Signature	Date
Transnet Pipelines Accepted			
Transnet Capital Projects Accepted			

Contents

	Page
1 Introduction	5
2 Methodologies	9
2.1 Site assessment and evaluation	9
3 Results and Discussion	9
3.1 List of sites	9
3.2 GLK006	12
3.3 GLK008 and GLK009	13
3.4 Graves 1 - 2	15
3.5 GLK025	16
3.6 GLK055	17
3.7 GLK031	18
3.8 P370.600	19
3.9 GLK035a	20
3.10 KP344.34	21
3.11 KP304.010	22
3.12 A01 stone circle	23
3.13 GLK063a Graves at KP274.08	24
3.14 GLK063a – feature 564	25
3.15 GLK063a	26
3.16 GLK066 – Features 571 & 572	27
3.17 GLK067	28
3.18 GLK118A	28
3.19 GLK118	29
3.20 N3	30
3.21 GLK125	31
3.22 GLK124	32
3.1 GLK123	32
3.2 GLK122a	33
3.3 GLK122b	33
3.4 GLK122c	34
3.5 Vaalkrans Battlefield	36
3.6 VAL36	37
3.7 GR1	37
3.8 VAL47	38
3.9 VAL54	38
3.10 VAL55	39

3.11	Walling at feature 57 and 58	39
3.12	GLK075	40
3.13	GLK075 K2 – K8	41
3.14	Grave at KP243.580	42
3.15	VAL9	43
3.16	Engraving	44
3.17	GLK078b	45
3.18	GLK082a	49
3.19	GLK127	50
3.20	A23A: Graves 314 - 315	51
3.21	Cairn 005a and 006a	51
3.22	GLK088a Boer ambush point	52
3.23	GLK088c Original railway lines	52
3.24	GLK090	52
3.25	321	53
3.26	Grave 322	54
3.27	GLK092	55
3.28	Grave B04a	56
3.29	KP200.260	57
3.30	KP189*13	58
3.31	GLK104	58
3.32	GLK097	59
3.33	2930AC 023	60
3.34	2930CB 067	60
3.35	GLK105	60
3.36	2930CB 066	62
3.37	GLK106	62
3.38	GLK107	62
3.39	KP75.601	62
3.40	KP73.3	63
3.41	KP73.2	63
3.42	KP73.1	64
3.43	GLK111	65
3.44	Graves - KP48.250	65
3.45	Graves - KP37.200	66
3.46	KP37.250	67
3.47	KP37.100	68
3.48	B34G	69

3.49	S369	70
3.50	KP210.100	70
4	Conclusions	71
5	APPENDIX A:	72
	List of all sites recorded during the NMPPP and their current status	72
6	APPENDIX B:	90
	Permits from SAHRA and Amafa KZN	90
Table 1: Lists of all sites recorded in the NMPP survey..... 10		
Fig. 1 GLK008 and GLK009		14
Fig. 2: Cemetery at 'Graves 1 - 2.....		15
Fig. 3: GLK025 general view		16
Fig. 43: View of battlefield and Herbstfontein		17
Fig. 5: Cemetery at GLK031		18
Fig. 6: Cemetery at KP370.600		19
Fig. 6: Stone Kraal at GLK035a.....		20
Fig. 7: Graves at KP344.34		21
Fig. 8: Grave at KP304.010		22
Fig. 9: Rehabilitated are near A01		23
Fig. 10: Grave at KP274.08		24
Fig. 11: Grave #564 at GLK063a.....		25
Fig. 12: GLK063a – Grave KP273.75		26
Fig. 13: GLK066 – Feature 572		27
Fig. 14: Graves at GLK118A.....		28
Fig. 15: Graves at GLK118.....		29
Fig. 16: Possible Graves at 'N3'		30
Fig. 17: Walling at GLK125.....		31
Fig. 19: GLK122b – Feature 569		33
Fig. 20: GLK122c – Feature 578		34
Fig. 21: GLK122c – Feature 337		35
Fig. 22: GLK122c – Feature 337b		35
Fig. 23: Vaalkrans Battlefield.....		36
Fig. 24: Cemetery at GR1.....		37
Fig. 25: Grave at VAL47		38
Fig. 26: VAL55 Grave		39
Fig. 27: GLK075 Grave.....		40
Fig. 28: Kraals at GLK075 K2.....		41
Fig. 29: Grave at KP243.580		42
Fig. 30: Grave at VAL9		43
Fig. 31: 2ABW Engraving:		44
Fig. 32: Walling at GLK78b – Feature 613		45
Fig. 33: GLK078b Engraving #615		46
Fig. 34: GLK078b Engraving 17		47
Fig. 35: GLK078b Engraving 20		48
Fig. 36: Cemetery at GLK082a.....		49
Fig. 37: Grave at GLK127.....		50
Fig. 38: Graves at 314 -315.....		51
Fig. 39: Possible Grave at GLK090		52
Fig. 40: Grave at Feature 321.....		53
Fig. 41: Grave at Feature 322.....		54
Fig. 42: GLK092 –Grave Feature 559		55
Fig. 42: Stone Feature at B04a.....		56
Fig. 43: Graves at KP200.260		57
Fig. 44: GLK104 Trees		58
Fig. 45: Historical Walling At GLK097.....		59
Fig. 46: Ashburton House Gate Entrance.....		61
Fig. 47: Drainage Feature at Ashburton House		61
Fig. 48 Graves at KP75.601		62
Fig. 49: Possible graves at KP73.2.....		63
Fig. 50: Possible graves at KP73.1.....		64
Fig. 51: Community Graves at KP48.250		66
Fig. 52: Community Graves at KP37.200		67
Fig. 53: Community Graves at KP37.250		68
Fig. 54: Community Graves at KP37.100		69

Fig. 55: Community Graves at B34G..... 70

1 Introduction

1.1 Scope

Umlando was instructed to undertake a heritage audit of all sites recorded during the NMPP project. A total of 577 sites and artefacts (relating to the 2ABW) were recorded during the various stages of the project. Of these sites, only those occurring within 100m of the RoW were subject to the audit.

The aim of this Final Audit was to assess the current status of each site after construction and rehabilitation of the pipeline was completed, and compares it to notes taken before and during the construction phases. This would allow for a base line assessment of the sites for future work.

1.2 Background

The heritage surveys began in 2008 where a 500m corridor was surveyed (250m on either side of the centreline). Subsequent to this survey, there were several re-alignments and surveys. In order to mitigate impacts to features such as graves and historical artefacts, mitigation for the heritage sites that were going to be damaged by construction began in 2009 during the pre-construction phase and continued during the construction phase. The mitigation varied from mapping, photographing, excavating and sampling sites, to monitoring certain areas during construction.

The Final Heritage Audit was undertaken in May 2013. A total of 577 sites and/or artefacts were recorded during the survey – this excludes a site such as GLK078b that was an individual hill with over 100 engravings on it. Of the 577 sites 416 of these occurred outside of the RoW servitude, and were thus omitted from this audit as the NMPPP had no affect on these. The balance of 161 sites and/or artefacts occurring within the RoW were therefore the focus of this audit.

1.3 Definitions

2ABW: Second Anglo-Boer War,

ECO: Environmental Control Officer – a range of people who undertake environmental monitoring and in some cases heritage monitoring,

Feature: Something modified by humans in the past to create a structure. This could be a grave, stone wall, engraving, etc.,

HIA: Heritage Impact Assessment/Assessor,

HP: Historical Period – in Kwazulu-Natal the Historical Period postdates 1829, and consists of indigenous and colonial people,

KP: Kilometre Point – every kilometre along the line is given a KP number and used as a reference point. The KP is then subdivided by the meters within the KP, e.g. KP500+500 would be at 500km from the start, and then another 500m north (or positive) towards KP600,

KZN: KwaZulu-Natal

JV: Joint Venture between Group 5 (South Africa) and Spiecapag (International). This is the construction company,

LIA: Late Iron Age – Iron Age farmers dating from c AD1100 – AD 1820,

NMPP: New Multi-Purpose Pipeline – the pipeline for the project,

RoW: Right of Way - This is a 30m wide strip from start to finish where the impact zone of the pipeline will occur. The RoW is levelled by removing the upper 30cm of topsoil,

SAHRA: South African Heritage Resources Agency

Significance of impact (in this instance all are negative impacts):

- High negative: site is destroyed and cannot be fixed,
- Medium negative: site is partially damaged or affected and may be mitigated and salvaged,
- Low negative: the site has been minimally affected, and for this report, it refers to the fact that the heritage area has been affected, and not the site.

Stone Age: is divided into three phases

- **LSA:** archaeological sites dating from 30 000 – 100 years ago occupied by hunter-gatherers,
- **MSA:** archaeological sites dating from 120 000 – 30 000 years ago occupied by hunter-gatherers,
- **ESA:** archaeological sites dating from 2 million – 30 000 years ago.

1.4 Legislation pertaining to heritage resources

All heritage resources fall under the jurisdiction of Amafa KwaZulu Natal (KZN), in KZN, or South African Heritage Resource Agency (SAHRA) in the other provinces. The legislation pertaining to each organisation is very similar.

1.1.1 KZN Heritage Act No. 4 of 2008

• “General protection: Structures.—

- *No structure which is, or which may reasonably be expected to be older than 60 years, may be demolished, altered, or added to without the prior written approval of the Council having been obtained on written application to the Council.*
- *Where the Council does not grant approval, the Council must consider special protection in terms of sections 38, 39, 40, 41 and 43 of Chapter 9.*
- *The Council may, by notice in the Gazette, exempt—*
 - *a defined geographical area; or*
 - *defined categories of sites within a defined geographical area, from the provisions of subsection where the Council is satisfied that heritage resources falling in the defined geographical area or category have been identified and are adequately protected in terms of sections 38, 39, 40, 41 and 43 of Chapter 9.*
- *A notice referred to in subsection (2) may, by notice in the Gazette, be amended or withdrawn by the Council.*

- **General protection: Graves of victims of conflict.—No person may damage, alter, exhume, or remove from its original position—**
 - the grave of a victim of conflict;
 - a cemetery made up of such graves; or
 - Any part of a cemetery containing such graves, without the prior written approval of the Council having been obtained on written application to the Council.
- **General protection: Traditional burial places.—**
 - No grave—
 - not otherwise protected by this Act; and
 - not located in a formal cemetery managed or administered by a local authority, may be damaged, altered, exhumed, removed from its original position, or otherwise disturbed without the prior written approval of the Council having been obtained on written application to the Council.
 - The Council may only issue written approval once the Council is satisfied that—
 - the applicant has made a concerted effort to consult with communities and individuals who by tradition may have an interest in the grave; and
 - the applicant and the relevant communities or individuals have reached agreement regarding the grave.
- **General protection: Battlefield sites, archaeological sites, rock art sites, palaeontological sites, historic fortifications, meteorite or meteorite impact sites.—**
 - No person may destroy, damage, excavate, alter, write or draw upon, or otherwise disturb any battlefield site, archaeological site, rock art site, palaeontological site, historic fortification, meteorite or meteorite impact site without the prior written approval of the Council having been obtained on written application to the Council.
 - Upon discovery of archaeological or palaeontological material or a meteorite by any person, all activity or operations in the general vicinity of such material or meteorite must cease forthwith and a person who made the discovery must submit a written report to the Council without delay.
 - The Council may, after consultation with an owner or controlling authority, by way of written notice served on the owner or controlling authority, prohibit any activity considered by the Council to be inappropriate within 50 metres of a rock art site.
 - No person may exhume, remove from its original position or otherwise disturb, damage, destroy, own or collect any object or material associated with any battlefield site, archaeological site, rock art site, palaeontological site, historic fortification, meteorite or meteorite impact site without the prior written approval of the Council having been obtained on written application to the Council.
 - No person may bring any equipment which assists in the detection of metals and archaeological and palaeontological objects and material, or excavation equipment onto any battlefield site, archaeological site, rock art site, palaeontological site, historic fortification, or meteorite impact site, or use similar detection or excavation equipment for the recovery of meteorites, without the prior written approval of the Council having been obtained on written application to the Council.
 - The ownership of any object or material associated with any battlefield site, archaeological site, rock art site, palaeontological site, historic fortification, meteorite

or meteorite impact site, on discovery, vest in the Provincial Government and the Council is regarded as the custodian on behalf of the Provincial Government.” (KZN Heritage Act of 2008)

1.1.2 National Heritage Resources Act of 1999

- *For the purposes of this Act, those heritage resources of South Africa which are of cultural significance or other special value for the present community and for future generations must be considered part of the national estate and fall within the sphere of operations of heritage resources authorities.*
- *Without limiting the generality of subsection (1), the national estate may include—*
 - *Places, buildings, structures and equipment of cultural significance;*
 - *Places to which oral traditions are attached or which are associated with living heritage;*
 - *Historical settlements and townscapes;*
 - *Landscapes and natural features of cultural significance;*
 - *Geological sites of scientific or cultural importance;*
 - *Archaeological and palaeontological sites;*
 - *Graves and burial grounds, including—*
 - *Ancestral graves;*
 - *Royal graves and graves of traditional leaders;*
 - *Graves of victims of conflict;*
 - *Graves of individuals designated by the Minister by notice in the Gazette;*
 - *Historical graves and cemeteries; and*
 - *Other human remains which are not covered in terms of the Human Tissue Act, 1983 (Act No. 65 of 1983);*
 - *Sites of significance relating to the history of slavery in South Africa;*
 - *Movable objects, including—*
 - *Objects recovered from the soil or waters of South Africa, including archaeological and palaeontological objects and material, meteorites and rare geological specimens;*
 - *Objects to which oral traditions are attached or which are associated with living heritage;*
 - *Ethnographic art and objects;*
 - *Military objects;*
 - *objects of decorative or fine art;*
 - *Objects of scientific or technological interest; and*
 - *books, records, documents, photographic positives and negatives, graphic, film or video material or sound recordings, excluding those that are public records as defined in section 1(xiv) of the National Archives of South Africa Act, 1996 (Act No. 43 of 1996).*

- *Without limiting the generality of subsections (1) and (2), a place or object is to be considered part of the national estate if it has cultural significance or other special value because of—*
 - *Its importance in the community, or pattern of South Africa's history;*
 - *Its possession of uncommon, rare or endangered aspects of South Africa's natural or cultural heritage;*
 - *Its potential to yield information that will contribute to an understanding of South Africa's natural or cultural heritage;*
 - *Its importance in demonstrating the principal characteristics of a particular class of South Africa's natural or cultural places or objects;*
 - *Its importance in exhibiting particular aesthetic characteristics valued by a community or cultural group;*
 - *Its importance in demonstrating a high degree of creative or technical achievement at a particular period;*
 - *Its strong or special association with a particular community or cultural group for social, cultural or spiritual reasons;*
 - *Its strong or special association with the life or work of a person, group or organization of importance in the history of South Africa; and sites of significance relating to the history of slavery in South Africa”.*

2 Methodologies

2.1 Site assessment and evaluation

During this week long (6 – 9 April 2013) audit, all sites that occurred within 100m of the RoW were assessed. Notes were made regarding the type of mitigation and the site management instructions for each site. Photographs of all of these sites are available if needed.. The intent of this audit was to verify whether any of the sites post construction and rehabilitation have been impacted. This was achieved by undertaking a week long site visit to all sites with 100m of the RoW servitude. All sites were located and re-inspected based on the baseline audits that were undertaken prior to construction, in order to confirm whether mitigation was successful or not.

3 Results and Discussion

3.1 List of sites

Table 1 lists all of the sites visited during the audit and states their distance from the RoW. Appendix A has a list of all sites recorded for the NMPPP recorded during the entire project. The table also lists the photographic reference number for future reference for TPL during the operation phase of the project. A few sites (considered to be at risk by the Heritage specialist, due to access to the RoW by construction plant and vehicles) that were located outside of the RoW were photographed. Sites were predominantly structural features that could have been affected by construction activity. Sites are listed from north to south, i.e. from Heidelberg to Durban moving from the north to the south.

Table 1: Lists of all sites recorded in the NMPP survey

Name	Latitude	Longitude	Description	Photo #	Impacted	Comment
GLK004	-26.5344203	28.4593092	Farm buildings and labourers' houses	3573	No	RoW
GLK006	-26.5359706	28.4623455	LSA scatter	-	Yes	mitigated
GLK008	-26.5523706	28.4666181	Stone walled house	3760	No	Near RoW
graves1	-26.5744419	28.4814966	Graves	3769	No	near RoW
graves2	-26.5744419	28.4814966	Graves	3770-3771	No	near RoW
GLK025	-26.7243334	28.6015834	Stone walling, 3 graves?, base of house	3774 - 3777	No	near RoW
GLK055b	-26.8378941	28.712171	Cemetery, graves, 1x terrace. Battlefield?	3785	Yes	mitigated
S3491	-27.3563611	29.0615556	grave	-	?	Could not locate
GLK031	-27.7059695	29.1367833	mudbrick houses	3802-3804	No	near RoW
KP370.600	-27.802513°	29.132507°	Modern Graves	3808-3809	Yes	see report.
GLK035a	-27.9572953	29.2152134	stone kraal	3810-3813	No	near RoW
KP344.34	-27.9898	29.2501333	Graves	38190	No	near RoW
GLK040b	-28.1892459	29.329167	Graves	3820-3821;3823	No	near RoW
KP304.010	-28.3145583	29.3750444	Graves	3824	No	In RoW
KP303.900	-28.3155139	29.3749306	Graves	-	No	same as kp304.010
A01	-28.437667	29.4894	stone circle	-	Yes	mitigated with photo
KP274.08	-28.49875	29.5462	Grave	3872-3873	No	near RoW
564a	-28.499319	29.546975	Grave	3875-3875	Yes	mitigated
GLK063a	-28.5001114	29.5461731	Stone walling, graves	3872-3876	Yes	mitigated
572	-28.53198	29.574805	2009/09/11 08:24	3879-3881	Yes	feature destroyed
571	-28.532012	29.574794	2009/09/11 08:23	3879-3881	Yes	feature destroyed
GLK1181	-28.532357	29.579648	graves	3882	Yes	mitigated
GLK066	-28.5324587	29.5731616	Historical & LIA: stone walling, graves	3879-3881	Yes	mitigated with excavation
GLK118	-28.5324722	29.5796112	Stone walling, graves. Historical-recent	3882-3884	Yes	mitigated
N3	-28.550725	29.602088	Graves	3885	Yes	destroyed
GLK125	-28.55391	29.603728	LIA Stone walling, graves	3886	No	In RoW
023A	-28.56087	29.605121	Feature excavated	-	Yes	excavated
GLK124	-28.5612223	29.6051929	LIA stone walling & graves	-	Yes	excavated
GLK123	-28.5628158	29.604933	LIA Stone walling	3887	Yes	excavated
GLK122a	-28.565031	29.605362	LIA Stone walling	-	Yes	excavated
29	-28.662527	29.632512	LIA	-	Yes	mitigated
VAL35	-28.6778333	29.6348333	Rock pile, not grave	-	Yes	mitigated
VAL36	-28.6789722	29.6343889	grave	-	No	near RoW
GR1	-28.6792778	29.6341111	Graves	3892	Yes	mitigated
VAL47	-28.6862778	29.6343056	Grave	3898	Yes	mitigated
VAL54	-28.689	29.6360556	stone walling	-	Yes	mitigated
VAL55	-28.6973056	29.6405	grave	3900-3901	Yes	mitigated

Name	Latitude	Longitude	Description	Photo #	Impacted	Comment
VAL57	-28.7101667	29.6438889	Grave	-	No	near RoW
58	-28.711553	29.645677	walling	-	Yes	mitigated
57	-28.711848	29.645874	walling	-	Yes	mitigated
Two houses	-28.7196069	29.6482596	Houses	-	Yes	mitigated
GLK075	-28.7197073	29.6486458	Recent houses and 2x graves	-	Yes	mitigated
GLK075 GRAVE	-28.71974	29.648031	Grave	3925	No	mitigated
GLK075 K2	-28.71986	29.648373	stone walling	-	No	near RoW
KP243.580	-28.73255	29.64834	grave	3926	No	mitigated
VAL9	-28.7327222	29.6483056	grave	3927	No	mitigated
Engraving	-28.7394333	29.6523167	Engraving ABW	3928-3935	Yes	mitigated
609	-28.76778	29.676431	Archaeological feature	-	No	near RoW
613	-28.768467	29.677131	Archaeological feature	3908-3909	Yes	mitigated
13	-28.768798	29.67706	Archaeological feature	-	Yes	excavated
GLK078b	-28.7705472	29.6768889	Historical/LIA stone walling & graves	-	Yes	mitigated & excavated
615	-28.771752	29.678603	Engraving	3912	Yes	mitigated
17	-28.77196	29.678791	Engraving	3909	Yes	mitigated
20	-28.771977	29.678767	Engraving	3910-3911	Yes	mitigated
019b	-28.773057	29.680215	Engraving	-	Yes	excavated
90	-28.773135	29.680229	Engraving	-	Yes	excavated
82	-28.773241	29.679973	Engraving	-	Yes	excavated
GLK082a1	-28.7944308	29.6871548	Graves 03-MAR-10 10:00:41AM	3913-3914	No	mitigated
GLK127	-28.810477	29.6936464	Modern Grave	3914-3915	No	mitigated
315	-28.850112	29.722466	graves.	3916	No	near RoW
A23A	-28.85012	29.722496	Recent settlement	3916	No	near RoW
314	-28.850311	29.722526	graves	3916	No	near RoW
006a	-28.861416	29.731048	cairn	-	No	near RoW
005a	-28.861568	29.730888	cairn	-	No	near RoW
GLK088a	-28.8680611	29.7614889	Boer positions at train attack. Churchill ambush point	-	Yes	mitigated
GLK128	-28.8718918	29.7529905	Fossil trees all over hill	-	Yes	mitigated
GLK088b	-28.8735528	29.7680305	Churchill memorial	-	Yes	permitted
GLK088c	-28.8752667	29.7669972	Original railway lines	-	Yes	permitted
VAL21	-28.8775556	29.76	metal artefact	-	Yes	mitigated
19	-28.877878	29.760361	metal artefact	-	Yes	mitigated
022a	-28.87833	29.761004	metal artefact	-	Yes	mitigated
27	-28.878397	29.761321	metal artefact	-	Yes	mitigated
564b1	-28.88236	29.765944	grave?	3917	No	mitigated
GLK090	-28.8825167	29.7663833	Coronation brick with lime(?) plaster & stonewalling	3917	No	mitigated
321	-28.888442	29.774961	grave	3920-3921	No	mitigated
322	-28.888445	29.774782	grave	3922	No	mitigated; near RoW
564b	-28.910364	29.795434	Grave	-	Yes	excavated
99	-28.910412	29.796417	Stone Walling	-	Yes	excavated
1509	-28.910644	29.801649	Stone Walling	-	Yes	excavated
555	-28.910876	29.796817	Stone Walling	-	Yes	excavated
556	-28.911098	29.796977	Stone Walling	-	Yes	excavated
557	-28.911593	29.797339	Stone Walling	-	Yes	excavated

Name	Latitude	Longitude	Description	Photo #	Impacted	Comment
558	-28.911925	29.79792	Stone Walling	-	Yes	excavated
559	-28.912317	29.798507	grave?	-	No	mitigated
560	-28.912341	29.798504	Stone Walling	-	Yes	excavated
KP210.100	-28.9580194	29.8539167	Grave	-	?	no access
B04a	-28.998299	29.893221	Grave	3923	No	near RoW
KP200.260	-29.02085	29.9005	Grave	3924	No	mitigated
KP189*13	-29.07919	29.97545	Grave	-	Yes	destroyed
GLK104	-29.1736683	30.0394537	Trees	3938-3939	No	near RoW
GLK104 start	-29.173868	30.03835	Trees	3938-3939	No	near RoW
GLK104 start1	-29.173868	30.03835	Trees	3938-3939	No	near RoW
GLK097 start	-29.3325222	30.1040195	Historic walling	3941	Yes	mitigated
GLK097 end	-29.3363266	30.1067537	Historic walling	3940	Yes	mitigated
2930AC 023	-29.489444	30.206667	MSA	-	Yes	mitigated
2930CB 067	-29.638611	30.460556	EIA	-	Yes	Monitored
GLK105	-29.643	30.464	House: Ashburton	3942-3944	No	near RoW
2930CB 066	-29.646111	30.464167	MSA	-	Yes	Monitored
GLK106	-29.6527778	30.4717777	MSA scatter	-	Yes	Monitored
GLK107	-29.6551111	30.4731667	MSA & LIA	-	Yes	Monitored
KP73.3	-29.81625	30.5219167	industrial waste (not graves)	-	Yes	In RoW
KP73.2	-29.8176389	30.5218334	Possible graves	3947	No	mitigated
KP73.1	-29.8179722	30.5220556	Possible graves	3946	No	mitigated
GLK111	-29.8367777	30.5247778	Building. Historical?	-	No	near RoW
KP48.250	-29.987917	30.660417	graves (community claim?)	3948	No	near RoW
KP37.200	-29.991083	30.765806	Grave (community claim)	3949	No	near RoW
KP37.250	-29.991306	30.765611	Grave (community claim)	3950	No	near RoW
KP37.100	-29.991361	30.766361	Grave (community claim)	3951	No	near RoW
B34G	-29.9913976	30.765651	Grave (community claim)	3952	No	near RoW

From the Table above, the below paragraphs provide a summation of each of the sites and its status with regards to whether it has been impacted on by the project or not. Status is divided into 3 ratings of 0 – 3. Status 0 implies that all procedures have been followed and no damage was done to the site at any stage, unless it was allowed by the permit. Status 1 implies some damage was done to the site but it was mitigated. Status 2 implies that the site was damaged and no mitigation had occurred. Status 3 implies that the site was totally destroyed without correct mitigation and/or permit.

3.2 GLK006

GLK006 was an open LSA scatter in a maize field. The site was recorded in the initial survey. The site occurred in the RoW and was of low significance. A permit for it to be damaged was granted. Two permits were issued for this project: one by SAHRA and Amafa KZN. These permits granted permission to damage or alter certain heritage sites.

Status: 0

Management: No future management is required.

3.3 GLK008 and GLK009

GLK008 consists of several historical farm labourer houses and a cemetery. GLK008 and GLK009 were mapped and photographed before construction. The RoW was placed between GLK008 and GLK009 and none of the sites were affected. The cemetery was not impacted.

Figure 1 shows the RoW in relation to the sites. All photographs were taken within the RoW.

Status: 0

Management: No future management is required.

Fig. 1 GLK008 and GLK009



3.4 Graves 1 - 2

The cemetery was noted by the ECO of the area before construction. The site consists of ~15 . graves that probably belong to farm labourers (Fig. 2). Some of the graves have headstones. The cemetery occurs just outside of the RoW. The site was fenced off and demarcated and not affected by construction.

Status: 0

Management: The fencing should remain around the graves, as a demarcation although NMPP would not need to be responsible for the upkeep of the fencing since it is outside of the RoW. This will be the standard mitigation from henceforth in the report.

Fig. 2: Cemetery at 'Graves 1 - 2



3.5 GLK025

GLK025 is located on the eastern side of a small rock outcrop. The site consists of the foundations of a house, stone walling for a kraal, and two cairns that could be human graves (fig. 3). The graves were demarcated before construction. The site occurs ~20m east of the RoW, and on the other side of the outcrop.

The site was not affected by construction activities. Some of the metal poles used for demarcating the cairns had been removed, although this could also have been due to cattle rubbing against the pole.

Status: 0

Management: No further management is required.

Fig. 3: GLK025 general view



3.6 GLK055

GLK055 consists of an historical cemetery and farm buildings, as well as a skirmish between British and Boer Forces in the 2ABW. This was called “The Battle of Herbstfontein”. Only the margins of the area of the skirmish area were affected by the RoW.

The Row was surveyed with a metal detector prior to construction (Fig. 4). No artefacts were noted during the survey. A permit was granted for this area to be destroyed.

Status: 0

Management: No further management is required

Fig. 43: View of battlefield and Herbstfontein



3.7 GLK031

GLK031 consists of mud brick houses and a cemetery of ~20 graves. The site was recorded during the initial survey. The graves were fenced and demarcated before construction and have not been affected (Fig. 5)

Status: 0

Management: Fencing should remain in place. The fencing should remain so as to demarcate the graves in case maintenance people accidentally drive off the RoW and over the graves. NMPPP should however, not be responsible for the continual upkeep of the fencing as the fencing may be broken or stolen. Furthermore, any development within 50m of a grave needs to fence off a grave.

Fig. 5: Cemetery at GLK031



3.8 P370.600

This cemetery was discovered during construction. The stones used for the cairns had been affected by mechanical equipment, and the ECO had rebuilt some of the cairns. The matter had been reported to SAHRA Gauteng and a site meeting was undertaken. Thereupon a report regarding the damages was written by Umlando and submitted to SAHRA Gauteng. Umlando and Transnet requested a response from SAHRA on several occasions and have never received one. Umlando and NMPPP consider the matter closed due to the lack of response. The cemetery is currently fenced (Fig. 6).

Status: 1

Management: Fencing should remain

Fig. 6: Cemetery at KP370.600



3.9 GLK035a

This site was recorded during the initial survey. The site is a large square kraal with the foundation stones remaining (Fig. 6).

The site occurs just outside the RoW and was not affected.

Status: 0

Management: No management required.

Fig. 6: Stone Kraal at GLK035a



3.10 KP344.34

KP344.34 is a group of three graves at the edge of the RoW (fig. 7). It was recorded by the ECOs. Two of the graves are outside of the RoW, while one grave occurs inside the RoW. The graves were fenced off and demarcated during construction; however now the demarcations are missing..

Status: 0

Management: The fencing should be replaced, and include the parts of the grave in the RoW. The RoW fencing should be realigned so as not to be within 5m of the graves.

Fig. 7: Graves at KP344.34



3.11 KP304.010

This site occurs on the top of the hill and was recorded by the ECO. There were initially two GPS readings for the graves suggesting that there were two sets of graves. However, there is only one set of graves. The graves occur in the RoW. The graves were fenced off and demarcated before construction. The graves were not damaged (Fig. 8).

Status: 0

Management: The graves should be re-fenced as they are in the RoW.

Fig. 8: Grave at KP304.010



3.12 A01 stone circle

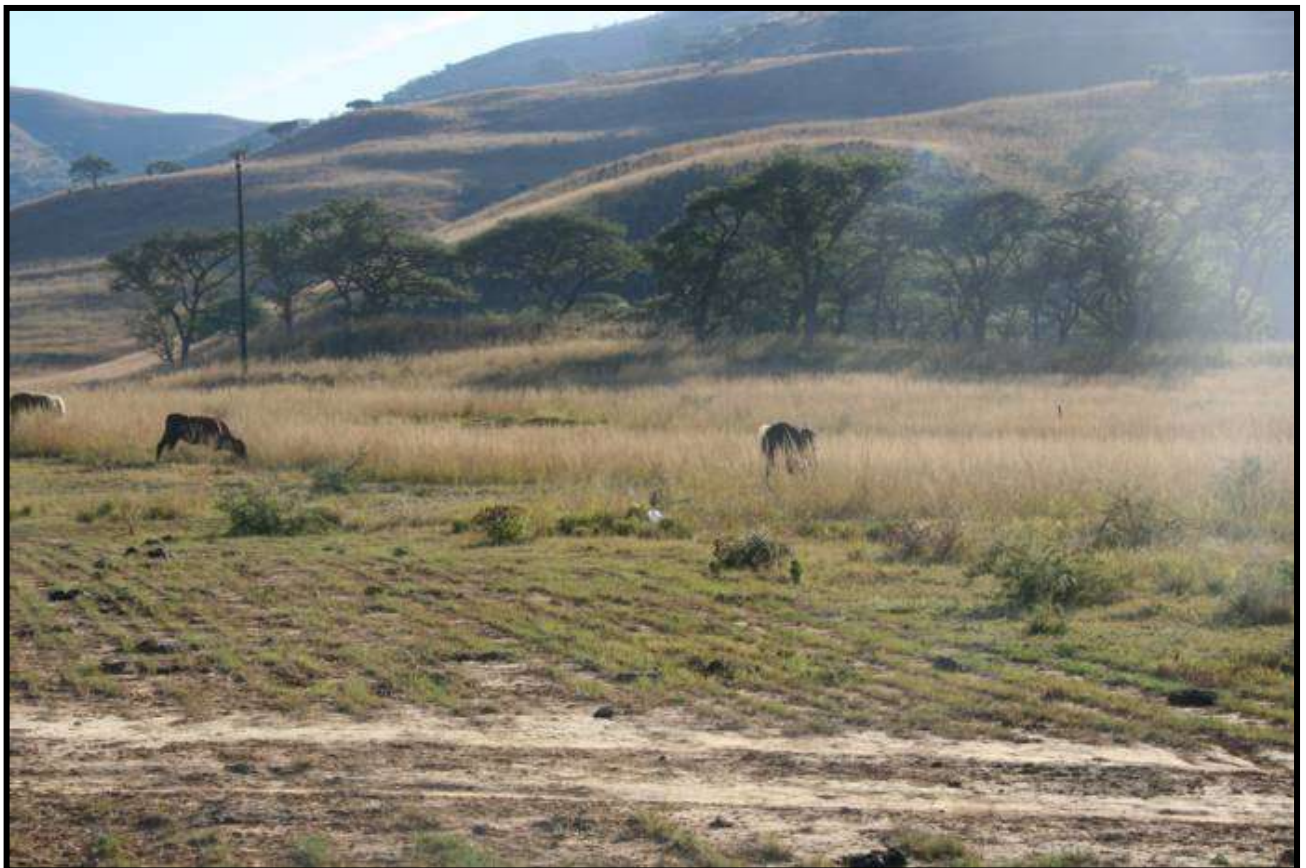
A01 was a small stone circle filled with stones approximately 1.5m in diameter. The feature was probably a granary floor (fig. 9).

The feature has been destroyed with permission in terms of the destruction permit from Amafa KZN.

Status: 0

Management: No further management is required.

Fig. 9: Rehabilitated are near A01



3.13 GLK063a Graves at KP274.08

The graves at GLK063a (KP274.08) were recorded during the initial survey. They graves were fenced off and demarcated before RoW clearance, and monitored during construction (fig. 10).

These graves were not damaged.

Status: 0

Management: The fence poles should remain

Fig. 10: Grave at KP274.08



3.14 GLK063a – feature 564

The graves at GLK063a (feature 564) were recorded during the initial survey (fig. 11). They were fenced off and demarcated before RoW clearance, and monitored during RoW clearance.

These graves were not damaged.

Status: 0

Management: The fence poles should remain

Fig. 11: Grave #564 at GLK063a



3.15 GLK063a

The Graves #031a at GLK063a (KP273.75) were recorded during the initial survey. They graves were fenced off and demarcated before RoW clearance, and monitored during Row clearance. (fig. 12)

During construction the graves were covered with bedrock. The heritage specialist and the projects Environmental Manager arrived on-site as the machinery was about to demolish the graves. The area was cordoned off, and the bedrock material was removed from the area. The graves were exposed and cleaned up. These graves were affected, but not damaged.

Status: 1

Management: The fence poles should remain

Fig. 12: GLK063a – Grave KP273.75



3.16 GLK066 – Features 571 & 572

GLK066 was recorded in the initial survey. The site is the remains of a LIA village with several stone walled features and graves. All the features within the RoW were recorded and systematic excavations were undertaken at the site. All features outside of the RoW were not fenced off. The contractor had widened one section at the site and subsequently demolished two graves (fig. 13). Subsequent excavations could not locate the features, apart from the southern part of the stone walling.

The damaged features at this site, and other sites, were reported to Amafa KZN, and a site visit was undertaken. A report detailing the damage was submitted to Amafa KZN. Amafa KZN has decided not to press charges. The damages to the various sites are in the main heritage report (UmlandoHIA_NMPP_2684358-UM-PL1- ENV-RP-004)

Status: 3

Management: No further management is required.

Fig. 13: GLK066 – Feature 572



3.17 GLK067

GLK067 was a stone walled kraal and pig sty. The site was recorded in the initial survey. The site was mapped and photographed before RoW clearance, and permit had been issued for its destruction.

Status: 0

Management: No further management is required.

3.18 GLK118A

The site was recorded during the initial surveys. The site consists of two graves and stone walling (fig. 14). The graves were demarcated before RoW clearance and monitored during RoW clearance. During construction, the bedrock was placed partially over the graves. The graves were cleaned up and did not have any damage to them.

Status: 1

Management: The graves should remain demarcated.

Fig. 14: Graves at GLK118A



3.19 GLK118

The site was recorded during the initial surveys. The site consists of two possible graves and stone walling (fig. 15). The graves were demarcated before RoW clearance and monitored during RoW clearance.

During construction the bedrock was placed partially over the graves. The graves were cleaned up and did not have any damage to them.

Status: 1

Management: The graves should remain demarcated.

Fig. 15: Graves at GLK118



3.20 N3

These possible graves were noted by the ECO during pre-construction. Two cairns were the appropriate sizes for graves and were deemed as such by the heritage specialist (fig. 16). The graves were fenced off and demarcated before RoW clearance as a precautionary measure. The graves were partially damaged during construction as bedrock had been placed over the graves.

The grave area was cleaned following the placing of bedrock, and the possible locations of the graves were noted. New cairns were placed in the demarcated area.

Status:2

Management: The area should remain fenced off.

Fig. 16: Possible Graves at 'N3'



3.21 GLK125

GLK125 was located during the initial surveys. The main part of the site consists of a low circular stone wall dating to the LIA. The walling was demarcated before RoW clearance and the site monitored (fig. 17).

No damage has occurred to the walling.

Status: 0

Management: No further mitigation is required.

Fig. 17: Walling at GLK125



3.22 GLK124

GLK124 was recorded during the initial surveys. The site was systematically mapped and excavated before RoW clearance. A permit for the destruction of the site was obtained.

Status: 0

Management: No further management is required.

3.1 GLK123

GLK123 was recorded during the initial surveys. The site was systematically mapped and excavated before RoW clearance. A permit for the destruction of the site was obtained.

Status: 0

Management: No further management is required.

Fig. 18: Stone Walling at GLK122a



3.2 GLK122a

GLK122a was recorded during the initial surveys. The site was systematically mapped and excavated before RoW clearance. A permit for the destruction of the site was obtained. One stone wall was demarcated and fenced off (fig. 18). It was not damaged during construction.

Status: 0

Management: No further management is required.

3.3 GLK122b

GLK122b consisted of several settlements along the side of the hill. Most of the site was located outside of the RoW, with the exception of two features. These were a rectangular stone wall with two graves, and a stone cairn in front of the kraal entrance that was regarded as a grave. The site was mapped and monitored during Row clearance.

The features were fenced off and clearly demarcated before RoW clearance. However, the one grave was demolished during construction. The general area of the grave was fenced off afterwards (fig. 19).

Status: 3

Management: Fencing should remain

Fig. 19: GLK122b – Feature 569



3.4 GLK122c

GLK122c was recorded during the initial survey and subsequently mapped and monitored during Row clearance. Three features occur with the RoW. These features were two graves and a circular stone wall. All features were fenced off and demarcated before Row clearance.

The two graves were demolished/removed during construction (fig. 20 – 21). The kraal was not damaged (fig. 22).

Status: 3

Management: The fencing should remain to indicate where the graves occurred. The fencing around the kraal should remain.

Fig. 20: GLK122c – Feature 578



Fig. 21: GLK122c – Feature 337



Fig. 22: GLK122c – Feature 337b



3.5 Vaalkrans Battlefield

The mitigation along the Vaalkrans Battlefield was completed via metal detector surveys and fencing sensitive areas. The overall status for this area is good (or '0'). The pipeline marker posts have been painted in a non-intrusive manner so as to blend with the landscape and not be confused with cairns and other features on Battlefields that are painted white.(fig. 23)

Status: 0

Management: The beacons need to be painted in the same colour for the duration of the pipeline. The NMPPP was allowed through the battlefield area on proviso that the beacons will be painted. If NMPPP wish to change this, they will need to approach Amafa KZN.

Fig. 23: Vaalkrans Battlefield



3.6 VAL36

The grave at VAL36 occurred outside of the RoW and was not affected

Status: 0

Management: No further mitigation is required

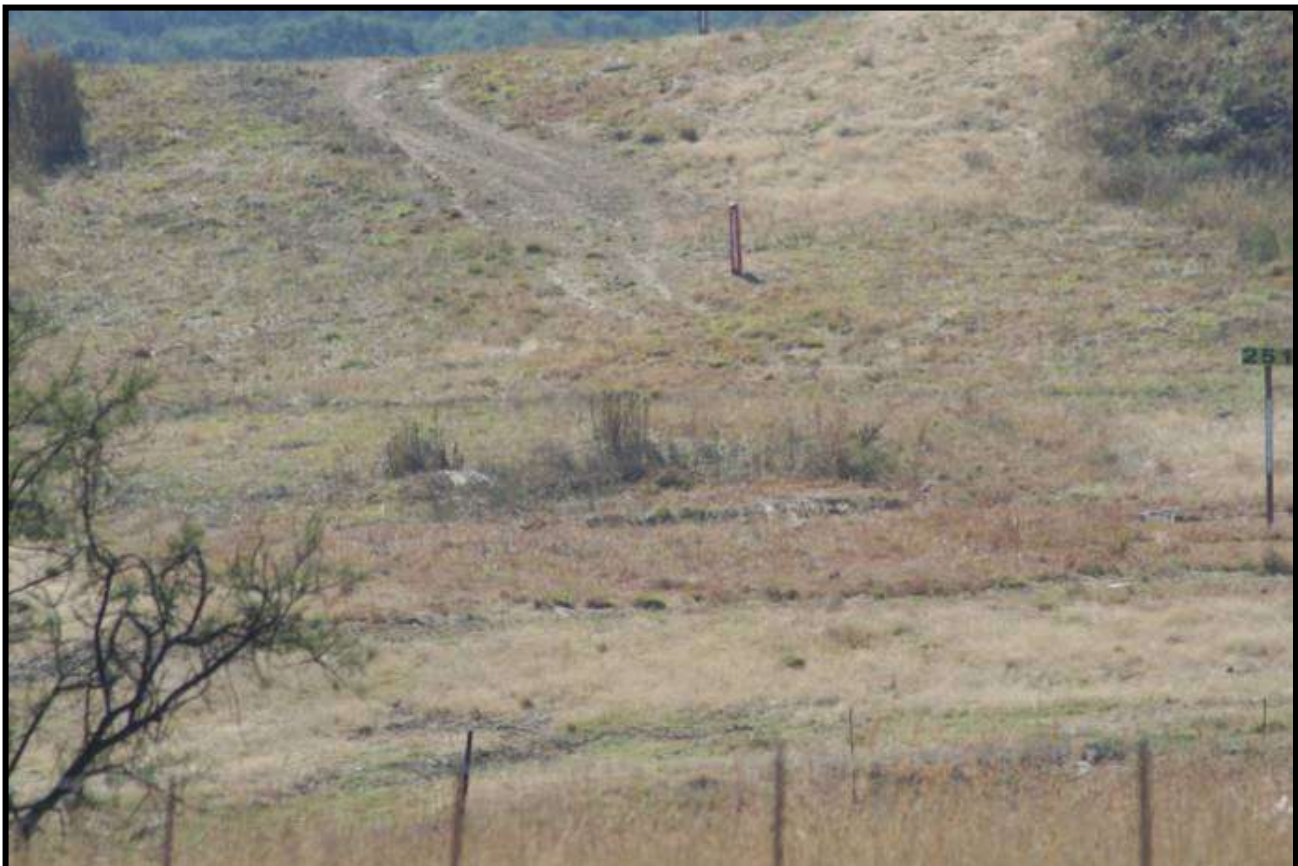
3.7 GR1

The cemetery at GR1 consisted of six graves. The graves were fenced off and demarcated before RoW clearance and the pipeline was realigned accordingly. The cemetery was not affected during construction (fig. 24).

Status: 0

Management: The fencing should remain around the cemetery.

Fig. 24: Cemetery at GR1



3.8 VAL47

The grave at VAL47 was fenced and demarcated before RoW clearance and the pipeline was realigned accordingly. The grave was nearly affected during construction; however, mitigation resulted in the grave being missed (fig. 25).

Status: 0

Management: The fencing should remain around the cemetery.

Fig. 25: Grave at VAL47



3.9 VAL54

VAL54 is the foundations of a stone wall. The walling occurred outside of the RoW and was not affected.

Status: 0

Management: No further mitigation is required.

3.10 VAL55

VAL55 is a possible grave in the RoW. The possible grave was fenced off and demarcated before RoW clearance (fig. 26). The grave was not affected by construction.

Status: 0

Management: The fencing should remain around the grave.

Fig. 26: VAL55 Grave



3.11 Walling at feature 57 and 58

The stone walling at features 57 and 58 were originally LIA walling. They may have been modified during the battle of Vaalkrans. The RoW was realigned and the walling occurred outside of the RoW. The walling was not affected by construction.

Status: 0

Management: No further management is required

3.12 GLK075

GLK075 consisted of a two recent houses and a grave (fig. 27). The grave was demarcated before RoW clearance. The houses were demolished with permission and the graves were not affected.

Status: 0

Management: The fencing around the graves should remain.

Fig. 27: GLK075 Grave



3.13 GLK075 K2 – K8

GLK075 K2 – K9 are a series of LIA and HP settlements. Only the stone walled kraals are visible. There are some fossils on the lower slopes of the hill. None of these kraals occurred within the RoW, and the NMPPP construction did not damage any of these features.

Subsequent to the NMPPP project, an electrical transmission line was placed between these kraals (fig. 28). Umlando did not assess if this had damaged any of the kraals as it was not part of the scope of work. There was no visible mitigation or demarcation of the sites for the transmission line conducted by Eskom during the construction of this new transmission line.

Status: 0

Management: No further management is required in terms of NMPPP project.

Fig. 28: Kraals at GLK075 K2



3.14 Grave at KP243.580

The grave at KP243.580 was fenced off and demarcated before RoW clearance (fig. 29). It was not affected by the NMPPP line.

Status: 0

Management: The fencing should remain around the grave.

Fig. 29: Grave at KP243.580



3.15 VAL9

The grave at VAL9 was fenced off and demarcated before RoW clearance (fig. 30). It was not affected by the NMPPP line

Status: 0

Management: The fencing should remain around the grave.

Fig. 30: Grave at VAL9



3.16 Engraving

The engraving was recorded during the mitigation of the battlefield. The engraving was in the RoW and was moved outside the RoW. The engravings relate to the 2ABW and are similar to ones recorded 10km to the north. The locations of the original and relocated engraving were noted. The engravings have not been damaged by the NMPPP.

Status: 0

Management: No further mitigation is required. The engraving should not be relocated to its original position as it may get damaged during any activity along the pipeline.

Fig. 31: 2ABW Engraving:



3.17 GLK078b

GLK078b was excavated before RoW clearance. The length of the site was excavated with 2m x 2m squares every 10m. All features within 5m of the centre point were excavated while the larger features were demarcated. In general there was little damage to the site in areas demarcated.

Status: 0-1: some parts of the site were affected

Management: No further management is required.

3.17.1 GLK078b Feature 613

Feature 613 is a LIA stone walled circle, or kraal (fig. 32). The kraal occurred within the RoW, but was fenced off as RoW clearance began. The feature was not damaged during construction.

Status: 0

Management: No further management required.

Fig. 32: Walling at GLK78b – Feature 613



3.17.2 Feature 615 - Engraving

The engraving (fig. 33) was demarcated before RoW clearance. The RoW was modified to avoid the engraving. Between the RoW clearance and construction the area was blasted without undertaking the required mitigation, and the engraving was covered by rock fragments.

The engravings were relocated and the rock material was removed. The engraving did not have any damage. The engravings were not affected by construction.

Status: 1

Management: The engravings are in areas that cannot be driven over by maintenance personnel. They are also out of the RoW and thus do not require further fencing. maintenance.

Fig. 33: GLK078b Engraving #615



3.17.3 GLK078b Engraving 17

The engraving (fig. 34) was demarcated before RoW clearance. The RoW was modified to avoid the engraving. Between the RoW clearance and construction the area was blasted without undertaking the required mitigation, and the engraving was covered by rock fragments.

The engravings were relocated and the rock material was removed. The engraving did not have any damage. The engravings were not affected by construction.

Status: 1

Management: The engravings are in areas that cannot be driven over by maintenance personnel. They are also out of the RoW and thus do not require further fencing.

Fig. 34: GLK078b Engraving 17



3.17.4 GLK078b Engraving 20

The engraving (fig. 35) was demarcated before RoW clearance. The RoW was modified to avoid the engraving. Between the RoW clearance and construction the area was blasted without undertaking the required mitigation, and the engraving was covered by rock fragments.

The engravings were relocated and the rock material was removed. The engraving did not have any damage. The engravings were not affected by construction.

Status: 1

Management: The engravings are in areas that cannot be driven over by maintenance personnel. They are also out of the RoW and thus do not require further fencing.

Fig. 35: GLK078b Engraving 20



3.17.5 GLK078b Engraving 82

The engraving was demarcated before RoW clearance. The RoW was modified to avoid the engraving. Between the RoW clearance and construction the area was blasted without undertaking the required mitigation, and the engraving was covered by rock fragments.

The engravings were relocated and the rock material was removed. The engraving did not have any damage. The engravings were not affected by construction. The vegetation around the engraving was too dense for a picture.

Status: 1

Management: The engravings are in areas that cannot be driven over by maintenance personell. They are also out of the RoW and thus do not require further fencing.

3.18 GLK082a

The cemetery occurred in the RoW; however the RoW was realigned. The cemetery was fenced off before RoW clearance (fig. 36) and no damage to the cemetery has occurred.

Status: 0

Management: The fencing should remain on site.

Fig. 36: Cemetery at GLK082a



3.19 GLK127

The grave was recorded during the initial survey (fig. 37). The grave was fenced and demarcated before RoW clearance. There has been no damage to the grave.

Status: 0

Management: The fencing should remain on site .

Fig. 37: Grave at GLK127



3.20 A23A: Graves 314 - 315

These graves and the settlement were noted before RoW clearance (fig. 38). The pipeline line was realigned to avoid the graves. The graves were fenced off and demarcated before RoW clearance. The graves have not been damaged during construction.

Status: 0

Management: The fencing should remain on site .

Fig. 38: Graves at 314 -315



3.21 Cairn 005a and 006a

These two cairns were reported to be graves; however they are not. They are probably field clearance rock pile. The graves occur several meters to the east near the stone walling. The cairns were outside of the RoW and were not damaged.

Status: 0

Management: No further mitigation is required.

3.22 GLK088a Boer ambush point

The section of the pipeline occurs on the outer western flank of the Boer positions when Sir Winston Churchill's train was ambushed. The section of the RoW was surveyed with a metal detector before RoW clearance. A permit was granted for this area to be affected.

Status: 0

Management: No further management is required.

3.23 GLK088c Original railway lines

These railway lines were part of the original lines. They are visible as raised area on the land. Permission was granted for this area to be damaged.

Status: 0

Management: No further management is required.

3.24 GLK090

GLK090 was a feature with Coronation bricks and with possible lime plaster (fig. 39). The feature was fenced off before RoW clearance and not damaged during construction.

Status: 0

Management: The fencing poles should remain on site.

Fig. 39: Possible Grave at GLK090



3.25 321

The grave was recorded before RoW clearance. The grave was fenced off and demarcated (fig. 40). No damage occurred to the grave.

Status: 0

Management: The fencing poles should remain on site.

Fig. 40: Grave at Feature 321



3.26 Grave 322

The grave was recorded before RoW clearance. The grave was fenced off and demarcated (fig. 41). No damage occurred to the grave.

Status: 0

Management: The fencing poles should remain on site.

Fig. 41: Grave at Feature 322



3.27 GLK092

GLK092 was systematically excavated before RoW clearance. The excavations consisted of 2m x 2m squares placed every 10m along the central line, for the length of the hill. The area was monitored during RoW clearance. All small features within 10m of the central line were excavated. These features are: 564b, 99, 1509, 555, 556, 557, 558, 559, and 560. A permit was granted for the destruction of part of the site.

One grave was fenced and demarcated near the edge of the RoW (fig. 42). The grave was not damaged.

Status: 0

Management: No further management is required for the main site; however the fence poles should remain on site.

Fig. 42: GLK092 –Grave Feature 559



3.28 Grave B04a

B04a is a small collapsed feature that appears to be a grave. The feature was fenced was demarcated with wooden poles (painted blue) before RoW clearance. The feature has not been damaged, but there are currently no metal poles to demarcate the feature.

Status: 0

Management: The feature is outside of the RoW, and more than 20m from the servitude and thus would not have to be demarcated

Fig. 42: Stone Feature at B04a



3.29 KP200.260

These two graves were noted by the ECO for this area before RoW clearance. The graves were demarcated and fenced before ROW clearance. There has been no damage to the graves.

Status: 0

Management: The poles should remain on site.

Fig. 43: Graves at KP200.260



3.30 KP189*13

This grave was noted by the ECO for the area before RoW clearance. The graves were demarcated with wooden poles (painted blue). The graves were demolished between, or during, RoW clearance and construction. An attempt was made to locate the graves, but to no avail.

Status: 3

Management: Metal poles should be placed to demarcate the location of the destroyed grave. This would serve as a memorial for the location of the grave.

3.31 GLK104

GLK104 formed part of the cultural landscape, as did GLK103. The trees were not damaged during RoW clearance nor construction. Some trees were cut down in Weston College during the monitoring of the area; however, this was not by the NMPPP.

Status: 0

Management: No further mitigation is required.

Fig. 44: GLK104 Trees



3.32 GLK097

GLK097 consists of historical stone walling either dating to the original farm or the 1930s. The pipeline was given permission to go through two sides of the wall, provided that the wall was rebuilt. A width of 6m was given for machinery to pass through. To keep some form of authenticity, each rock was mapped and labelled, and placed to the side. The wall was not damaged during RoW clearance; however, construction removed ~15m of walling on each side of the wall.

The wall was rebuilt using the same locally sourced raw materials, and similar architecture (fig. 45).

Status: 1

Management: No further management is required.

Fig. 45: Historical Walling At GLK097



3.33 2930AC 023

This site was an MSA scatter in and outside of the RoW. Permission was granted for parts of the site to be damaged.

Status: 0

Management: No further management is required

3.34 2930CB 067

This site was an EIA site that was previously partially excavated. The RoW clearance was monitored and several artefacts were recovered. A permit was granted for parts of the site to be damaged.

Status: 0

Management: No further management is required

3.35 GLK105

The Ashburton house is currently in ruins. The gate entrance is still visible as are some of the foundations and the overgrown garden. The main house and gates (fig. 46) did not occur in the RoW, and were not affected. The gates have been slightly damaged, subsequent to RoW and construction. A tree has fallen onto the one wall; however, this appears to be a recent activity and not associated with the project as it is well outside of the RoW servitude..

There is a small part of a feature within the RoW along the north-western part of the property (fig. 47). This was fenced off and demarcated before RoW clearance. This was not damage during construction. The site was monitored during RoW clearance.

Status: 0

Management: No further management is required.

Fig. 46: Ashburton House Gate Entrance



Fig. 47: Drainage Feature at Ashburton House



3.36 2930CB 066

This site was an MSA scatter in and outside of the RoW. A permit was granted for parts of the site to be damaged. The site was monitored during RoW clearance.

Status: 0

Management: No further management is required

3.37 GLK106

This site was an MSA scatter in and outside of the RoW. Permission was granted for parts of the site to be damaged. The site was monitored during RoW clearance.

Status: 0

Management: No further management is required

3.38 GLK107

This site was an MSA and IIA scatter in and outside of the RoW. A permit was granted for parts of the site to be damaged. The site was monitored during RoW clearance.

Status: 0

Management: No further management is required

3.39 KP75.601

This site consists of farm labourers' graves outside of the RoW. The graves were demarcated before RoW clearance and have not been damaged (fig. 48).

Status: 0

Management: No further management is required

Fig. 48 Graves at KP75.601



3.40 KP73.3

KP73.3 was demarcated as a possible grave by the ECO. These were not graves, but industrial rubble. The area was not affected during the RoW clearance

Status: 0

Management: No further management is required

3.41 KP73.2

KP73.2 are stone cairns that appear to be graves. The area was fenced off and demarcated before RoW clearance (fig. 49). The possible graves have not been damaged.

Status: 0

Management: No further management is required

Fig. 49: Possible graves at KP73.2



3.42 KP73.1

KP73.1 are stone cairns that appear to be graves. The area was fenced off and demarcated before RoW clearance (fig. 50). The apparent graves have not been damaged.

Status: 0

Management: No further management is required

Fig. 50: Possible graves at KP73.1



3.43 GLK111

GLK 111 is a more recent building that occurs outside of the RoW. The building has not been affected.

Status: 0

Management: No further management is required

3.44 Graves - KP48.250

KP48.250 is an area identified by the community as having graves (fig. 51). The area was demarcated before RoW clearance. No damage has occurred to the area.

Umlando did not observe any formal graves in this area, except for mounds of soil.

Status: 0

Management: Fence poles should remain at the site

Fig. 51: Community Graves at KP48.250



3.45 Graves - KP37.200

KP37.200 is an area identified by the community as having graves (fig. 52). The area was demarcated before RoW clearance. No damage has occurred to the area.

Umlando did not observe any formal graves in this area, except for mounds of soil.

Status: 0

Management: Fence poles should remain at the site

Fig. 52: Community Graves at KP37.200



3.46 KP37.250

KP37.250 is an area identified by the community as having graves (fig. 53). The area was demarcated before RoW clearance. No damage has occurred to the area.

Status: 0

Management: Fence poles should remain at the site

Fig. 53: Community Graves at KP37.250



3.47 KP37.100

KP37.100 is an area identified by the community as having graves (fig. 54). The area was demarcated before RoW clearance. No damage has occurred to the area.

Status: 0

Management: Fence poles should remain at the site

Fig. 54: Community Graves at KP37.100



3.48 B34G

KP37.100 is an area identified by the community as having graves (fig. 55). The area was demarcated before RoW clearance. No damage has occurred to the area.

Status: 0

Management: Fence poles should remain at the site

Fig. 55: Community Graves at B34G**3.49 S369**

S369 is an assumed grave noted by the ECO of the area. It occurs on the opposite side of the road to the RoW. The grave could not be located

Status: Unknown

Management: The 'grave' is not in the RoW, thus no management is required.

3.50 KP210.100

The grave at KP210.100 was not visited during the audit as permission to enter the land was not granted by the landowner. The grave was recorded by the ECO, however it occurs ~60m from the RoW.

It is assumed that no damage occurred to the grave.

Status: Unknown

Management: The grave is not in the RoW, so no management is required.

4 Conclusions

Umlando undertook the heritage audit of the NMPPP. The audit visited all site in and near the RoW, and assessed the sites in terms of the required management plans. . A total of 577 sites and/or artefacts were recorded during the survey – this excludes a site such as GLK078b that was an individual hill with over 100 engravings on it. Of the 577 sites, 416 of these occurred outside of the RoW servitude, and were thus omitted from this audit as the NMPPP had no affect on these. The balance of 161 sites and/or artefacts occurring within the RoW were therefore the focus of this audit. Of all of these sites only five were irrevocably damaged. This report is based on the findings detailed in the main heritage report (UmlandoHIA_NMPP_2684358-UM-PL1- ENV-RP-004). The main heritage report should be referred to for details regarding each site.

The heritage audit concluded that most of the sites that occur within or near the RoW have not been negatively affected. Those sites that were negatively affected have been appropriately managed.

No further mitigation is required for the sites within the RoW, except for the graves to be demarcated with fence poles. This is to ensure that they do not get inadvertently damaged during future maintenance. Having said this, NMPPP cannot be expected to continually erect fencing and poles around the sites. Poles and fencing have been stolen throughout the project, animals have rubbed against the poles and moved them, or landowners have removed the poles and fencing. The NMPPP should do this a once-off management activity. Most of the sites already have fencing and poles, and thus do not require additional poles.

5 APPENDIX A:

List of all sites recorded during the NMPPP and their current status

Appendix A provides a list for every site and/or artefact that was recorded during the entire project. Unlike Table 1, it lists those sites outside of the RoW as well.

Name	Latitude	Longitude	Description	Impacted	Comment
GLK001	-26.4843444	28.4263833	2x industrial buildings	No	Outside RoW
GLK002	-26.5117805	28.4426555	Old Mine Shaft	No	Outside RoW
GLK003	-26.5262382	28.4576538	Farm buildings	No	Outside RoW
GLK004	-26.5344203	28.4593092	Farm buildings and labourers' houses	No	RoW
GLK006	-26.5359706	28.4623455	LSA scatter	Yes	mitigated
GLK005	-26.540888	28.463343	Historical farm buildings	No	Outside RoW
GLK007	-26.5451061	28.4615429	12+ graves, 3 stone structures	No	Outside RoW
GLK008a	-26.5520621	28.4681285	Kraal	No	Outside RoW
GLK008	-26.5523706	28.4666181	Stone walled house	No	Near RoW
GLK009	-26.5542836	28.4673768	Stone walled houses	No	Outside RoW
GLK010	-26.5584351	28.4690627	2x mudbrick houses. Grave?	No	Outside RoW
graves1	-26.5744419	28.4814966		No	near RoW
graves2	-26.5744419	28.4814966		No	near RoW
GLK011	-26.5852938	28.4890732	Farm buildings	No	Outside RoW
GLK023	-26.7208612	28.6031944	Old farmhouse	No	Outside RoW
GLK022	-26.7241666	28.59875	Mudbrick settlement	No	Outside RoW
GLK025	-26.7243334	28.6015834	Stone walling, 3 graves?, base of house	No	near RoW
GLK024	-26.7246111	28.6046667	Mudbrick house, walling, graves?	No	Outside RoW
GLK021	-26.7281945	28.598	Family Cemetery of ~30 graves. Stone walled ruins	No	Outside RoW
GLK053	-26.7376111	28.6230555	Stone walling	No	Outside RoW
GLK054	-26.7406787	28.6207728	Cemetery	No	Outside RoW
GLK026	-26.7894722	28.6636944	Witpoort house	No	Outside RoW
GLK056a	-26.837825	28.7064472	Stone walled settlement	No	Outside RoW
GLK055b	-26.8378941	28.712171	Cemetery, graves, 1x terrace. Battlefield?	Yes	mitigated
GLK055a	-26.8379723	28.7144444	Historic buildings & walling +1890s	No	Outside RoW
GLK057	-26.840949	28.7159318	Cemetery, walling	No	Outside RoW
GLK058	-26.8430944	28.7124825	Historic (school) building	No	Outside RoW
GLK027b	-26.9547401	28.7656891	Cemetery	No	Outside RoW
GLK027a	-26.9569986	28.7619054	Historical stone walling	No	Outside RoW
PDF03	-26.9908104	28.800372	LIA Stone walling	No	Outside RoW
GLK028	-26.9928139	28.7956195	LIA settlement	No	Outside

Name	Latitude	Longitude	Description	Impacted	Comment
					RoW
VAL1	-27.03855	28.820417	Stone walling	No	Outside RoW
GLK020a	-27.0568333	28.8406389	Helderwater farmhouse & buildings	No	Outside RoW
GLK020b	-27.0608611	28.8426944	Labourers' houses & stone walls/boundary	No	Outside RoW
GLK019	-27.0855556	28.8629444	Deelkuil Old Farmhouses	No	Outside RoW
GLK018	-27.0945261	28.8600031	Niemandskraal farmhouse	No	Outside RoW
GLK017	-27.1623611	28.9419444	Venter family cemetery, labourers' houses	No	Outside RoW
GLK016	-27.1985834	28.9568611	Middeldeel Farmhouse	No	Outside RoW
GLK015a	-27.2519154	29.0064341	Farm Labourers' houses	No	Outside RoW
GLK015	-27.2611445	29.0054306	Farm Labourers' houses	No	Outside RoW
GLK014	-27.3072222	29.0332222	Pietersdeel Farmhouse	No	Outside RoW
S3491	-27.3563611	29.0615556	grave	?	Could not locate
GLK013	-27.3563611	29.0590833	Farm labourer houses and possible grave(s)	No	Outside RoW
GLK012	-27.3696433	29.0748819	Abandoned school buildings, grave?	No	Outside RoW
KP426.1301	-27.3820362	29.1005483		No	Outside RoW
GLK029	-27.4368111	29.1472556	Old building	No	Outside RoW
GLK030	-27.4647059	29.1361056	Humania farm	No	Outside RoW
GLK115	-27.6613208	29.1325906	Langeverwacht farmhouse. Historical buildings	No	Outside RoW
Modern houses	-27.6790444	29.1366472	Modern houses and possible graves? Not recorded by Umlando	No	Outside RoW
GLK032	-27.6921389	29.1208056	Battle of Langverwag. Lombard/Oodendaa l graves	No	Outside RoW
GLK031	-27.7059695	29.1367833	mudbrick houses	No	near RoW
GLK033	-27.7485556	29.1371416	Frisgewaag farm	No	Outside RoW
KP370.600	-27.802513°	29.132507°	Modern Graves	Yes	see report.
graves	-27.802627	29.132259	Graves	No	Outside RoW
GLK034	-27.8441893	29.166881	Kraal and sheep dip	No	Outside RoW
GLK035a	-27.9572953	29.2152134	stone kraal	No	near RoW
GLK035b	-27.9811082	29.2230992	2x stone kraals	No	Outside RoW
GLK117	-27.9831306	29.2465722	Historical farm buildings: labourers? Shelters with LSA material	No	Outside RoW
KP344.34	-27.9898	29.2501333	Graves	No	near RoW
GLK036	-28.000445	29.2331977	LIA stone walling	No	Outside RoW

Name	Latitude	Longitude	Description	Impacted	Comment
GLK116	-28.0021972	29.2483222	Recent houses, possible old kraal	No	Outside RoW
GLK118(a)	-28.0122115	29.64826		No	Outside RoW
GLK037	-28.0158333	29.2273611	Stone walling	No	Outside RoW
GLK038	-28.022135	29.2300259	Maritz Drift farm house	No	Outside RoW
GLK039	-28.1537638	29.30521	Graves x3	No	Outside RoW
GLK040a	-28.1876111	29.3316111	Somersvlakte farm and wagon tracks	No	Outside RoW
GLK040b	-28.1892459	29.329167	Graves	No	near RoW
GLK041	-28.1943889	29.3303334	Demolished buildings and labourers' house	No	Outside RoW
GLK042	-28.2570569	29.3729347	Graves of Wessels and Coetzee's	No	Outside RoW
GLK044	-28.2920243	29.3750838	Faded Rock Art	No	Outside RoW
GLK045	-28.2936389	29.3737222	Walling	No	Outside RoW
GLK0451	-28.2936389	29.3737222	walling & grave	No	Outside RoW
Cemetery	-28.2958861	29.3996611	Graves	No	Outside RoW
Cemetery1	-28.2958861	29.3996611	Graves	No	Outside RoW
GLK043	-28.3056666	29.3812222	Murphy's Rest farmhouse & buildings	No	Outside RoW
KP304.010	-28.3145583	29.3750444	Graves	No	In RoW
KP303.900	-28.3155139	29.3749306	Graves	No	same as kp304.010
GLK046	-28.3199444	29.3680278	Mountain View farmhouse	No	Outside RoW
GLK048	-28.3211968	29.3828698	Historic buildings and engravings	No	Outside RoW
GLK047	-28.3211982	29.3795919	Assumed rock art	No	Outside RoW
GLK049	-28.3468056	29.3786111		No	Outside RoW
GLK0491	-28.3468056	29.3786111	Primrose Farm and family cemetery	No	Outside RoW
GLK050	-28.3514408	29.3807123	Stone walled kraal	No	Outside RoW
GLK051	-28.3744444	29.3852778	Bridges	No	Outside RoW
GLK059	-28.377158	29.3909176	2x recent graves	No	Outside RoW
019c	-28.384048	29.402974	graves of HLANGWANE 11:29:34	No	Outside RoW
021c	-28.387499	29.393221	walling 2009/08/05 11:55:03 AM	No	Outside RoW
020c	-28.387986	29.392449	walling 2009/08/05 11:51:00 AM	No	Outside RoW
GLK052b	-28.40325	29.4171111	Van Reenen wagon tracks	No	Outside RoW
GLK052a	-28.4033333	29.4216667	Van Reenen Pass wagon tracks	No	Outside RoW
ABC	-28.437489	29.4907617	graves and houses - recent	No	Outside RoW
A01	-28.437667	29.4894	stone circle	Yes	mitigated with photo
GLK060b	-28.440034	29.4875826	Possible walling	No	Outside

Name	Latitude	Longitude	Description	Impacted	Comment
					RoW
GLK060a	-28.4403585	29.4864215	Walling: historic/recent?	No	Outside RoW
graves 3	-28.49367	29.53933	~4 graves and stone walling at tree	No	Outside RoW
629	-28.456402	29.495872	2009/10/21 15:24	No	Outside RoW
GLK061b	-28.4789334	29.5338328	Stone walling	No	Outside RoW
GLK061a	-28.4792232	29.5323257	Terracing?	No	Outside RoW
GLK062	-28.4904295	29.5385024	Stone walling, graves	No	Outside RoW
KP274.08	-28.49875	29.5462	Grave	No	near RoW
564a	-28.499319	29.546975	Grave	Yes	mitigated
KP273.95	-28.4993833	29.5482333	Artefact	No	Outside RoW
031a	-28.49939	29.548304	Artefact	Yes	Outside RoW
030c	-28.499933	29.548218	Artefact	No	Outside RoW
GLK063a	-28.5001114	29.5461731	Stone walling, graves	Yes	mitigated
029c	-28.500747	29.546637		No	Outside RoW
GLK063b	-28.5047293	29.5501061	Historical walling mostly on the 2 hills	No	Outside RoW
GLK064b	-28.5077944	29.5567583	Rectangular walling	No	Outside RoW
GLK064a	-28.5104695	29.554725	Circular stone walling	No	Outside RoW
GLK065a	-28.5168043	29.5636546	Blue Bank stone walling	No	Outside RoW
GLK065b	-28.5195318	29.5650257	Bluebank historical buildings: church farmhouse	No	Outside RoW
008A	-28.527351	29.571687	07-SEP-09 8:40:49 LSA	No	Outside RoW
GLK121	-28.5295	29.5798334	LIA stone walling and graves	No	Outside RoW
GLK120	-28.5303056	29.5825	Stone walling and cleared areas	No	Outside RoW
GLK119	-28.5312778	29.58125	MSA Quarry	No	Outside RoW
027c	-28.531925	29.572776	Artefact	No	Outside RoW
026c	-28.531931	29.572773	Artefact	No	Outside RoW
572	-28.53198	29.574805	Artefact	Yes	feature destroyed
571	-28.532012	29.574794	Artefact	Yes	feature destroyed
025c	-28.5322	29.571564	Artefact	No	Outside RoW
118A	-28.532226	29.579783	Artefact	Yes	mitigated
GLK1181	-28.532357	29.579648	graves	Yes	mitigated
314	-28.532403	29.574552		No	Outside RoW
GLK066	-28.5324587	29.5731616	Historical & LIA: stone walling, graves	Yes	mitigated with excavation
GLK118	-28.5324722	29.5796112	Stone walling, graves. Historical- recent	Yes	mitigated
022b	-28.532525	29.571776	2ABW artefact	No	Outside RoW

Name	Latitude	Longitude	Description	Impacted	Comment
3151	-28.532595	29.57446	2ABW artefact	No	Outside RoW
009b	-28.532789	29.571595	2ABW artefact	No	Outside RoW
568	-28.533539	29.574299	2ABW artefact	No	Outside RoW
567	-28.533641	29.574306	2ABW artefact	No	Outside RoW
A03	-28.546632	29.596402	2ABW artefact	No	Outside RoW
A23	-28.546721	29.596541	2ABW artefact	No	Outside RoW
C04	-28.546837	29.597317	2ABW artefact	No	Outside RoW
B01	-28.547751	29.587893	2ABW artefact	No	Outside RoW
B03	-28.549053	29.584934	2ABW artefact	No	Outside RoW
B02	-28.54958	29.587747	2ABW artefact	No	Outside RoW
GLK068f	-28.5496598	29.6093673	Stone walling, graves?	No	Outside RoW
GLK068e	-28.5498529	29.6048113	Stone walling, graves?	No	Outside RoW
N3	-28.550725	29.602088		Yes	destroyed
GLK068d	-28.5521979	29.6060016	Stone walling, graves?	No	Outside RoW
GLK068g	-28.5529447	29.6093908	Stone walling, graves?	No	Outside RoW
GLK125	-28.55391	29.603728	LIA Stone walling, graves	No	In RoW
GLK068c	-28.5540111	29.6068145	Stone walling, graves?	No	Outside RoW
GLK068h	-28.5553727	29.616555	Stone walling, graves?	No	Outside RoW
GLK068b	-28.5578012	29.6099334	LIA/Historical: Stone walling, graves	No	Outside RoW
GLK068i	-28.5596659	29.6161874	Stone walling, graves?	No	Outside RoW
GLK068a	-28.5604277	29.6077767	Southern extent of stone walling settlements	No	Outside RoW
023A	-28.56087	29.605121	2009/09/07 13:15 excavated	Yes	excavated
GLK124	-28.5612223	29.6051929	LIA stone walling & graves	Yes	excavated
GLK123	-28.5628158	29.604933	LIA Stone walling	Yes	excavated
GLK067	-28.5628333	29.6077222	Historical: Stone walling, graves	No	Outside RoW
026A	-28.564169	29.607436	2ABW artefact	No	Outside RoW
574	-28.564353	29.605421	2ABW artefact	Yes	excavated
GLK122a	-28.565031	29.605362	LIA Stone walling	Yes	excavated
GLK122b	-28.5662832	29.604887	LIA stone walling	No	Outside RoW
570	-28.567739	29.605397	2ABW artefact	No	Outside RoW
569a	-28.5680166	29.6056674	2ABW artefact	No	near RoW
569	-28.56805	29.605845	2ABW artefact	Yes	destroyed
GLK069b	-28.5717917	29.6127928	Stone walling, graves	No	Outside RoW
578	-28.572107	29.606459	2ABW artefact	Yes	destroyed
GLK069a	-28.572564	29.6152627	Stone walling, graves?	No	Outside RoW
337	-28.572714	29.606476	2ABW artefact	Yes	destroyed

Name	Latitude	Longitude	Description	Impacted	Comment
031A	-28.573677	29.606606	Fossil	Yes	PIA?
577	-28.573755	29.606633	Fossil	Yes	PIA?
GLK070a	-28.6593164	29.6345839	Battle of Vaalkrans: 5-7 Feb. 1900. Boer occupation	No	Outside RoW
316	-28.662503	29.632314	2ABW artefact	Yes	mitigated
29	-28.662527	29.632512	LIA	Yes	mitigated
30	-28.663633	29.632984	2ABW artefact	Yes	mitigated
313	-28.664481	29.633492	2ABW artefact	Yes	mitigated
31	-28.665198	29.63376	2ABW artefact	Yes	mitigated
GLK070b	-28.6654626	29.6374613	Battle of Vaalkrans: 5-7 Feb. 1900. British occupation	No	Outside RoW
310	-28.665999	29.634234	2ABW artefact	Yes	mitigated
28	-28.66627	29.634763	2ABW artefact	Yes	mitigated
303	-28.666292	29.635185	2ABW artefact	Yes	mitigated
123	-28.666296	29.634826	2ABW artefact	Yes	mitigated
311	-28.666323	29.63472	2ABW artefact	Yes	mitigated
312	-28.666416	29.634518	2ABW artefact	Yes	mitigated
120A	-28.668724	29.636728	2ABW artefact	Yes	mitigated
119B	-28.668793	29.636588	2ABW artefact	Yes	mitigated
121D	-28.668794	29.636776	2ABW artefact	Yes	mitigated
122D	-28.668954	29.636852	2ABW artefact	Yes	mitigated
124D	-28.669663	29.636936	2ABW artefact	Yes	mitigated
123D	-28.669695	29.636672	2ABW artefact	Yes	mitigated
115D	-28.671515	29.636799	2ABW artefact	Yes	mitigated
GLK070c	-28.6721333	29.6416527	Battle of Vaalkrans: 5-7 Feb. 1900. Boer occupation	No	Outside RoW
32	-28.673028	29.637519	2ABW artefact	Yes	mitigated
127D	-28.674478	29.637142	2ABW artefact	Yes	mitigated
128D	-28.67448	29.636876	2ABW artefact	Yes	mitigated
126D	-28.674504	29.637039	2ABW artefact	Yes	mitigated
129D	-28.676002	29.635603	2ABW artefact	Yes	mitigated
33	-28.67645	29.6354	2ABW artefact	Yes	mitigated
130D	-28.676983	29.63491	2ABW artefact	Yes	mitigated
34	-28.677823	29.634791	2ABW artefact	Yes	mitigated
VAL35	-28.6778333	29.6348333	Rock pile, not grave	Yes	mitigated
GLK070d	-28.6785944	29.6423917	Battle of Vaalkrans: 5-7 Feb. 1900. British occupation	No	Outside RoW
VAL36	-28.6789722	29.6343889	grave	No	near RoW
GR1	-28.6792778	29.6341111	Graves	Yes	mitigated
VAL37	-28.6796667	29.6344167	Graves	No	Outside RoW
VAL38	-28.6796944	29.6344722	Graves	No	Outside RoW
MUN WALL	-28.68164	29.631349	2ABW artefact	No	Outside RoW
39	-28.682272	29.633416	2ABW artefact	Yes	mitigated
131D	-28.682801	29.633501	2ABW artefact	Yes	mitigated
132D	-28.682992	29.633575	2ABW artefact	Yes	mitigated
BB1	-28.683134	29.634409	2ABW artefact	No	Outside RoW
44	-28.683486	29.633903	grave	No	Outside RoW
Mungers Farm	-28.68352	29.625341	2ABW feature	No	Outside RoW
45	-28.683607	29.635008	grave/wall	No	Outside RoW
42	-28.683632	29.634487	grave	No	Outside RoW
41	-28.683636	29.634436	grave	No	Outside RoW
VAL44	-28.6836389	29.6344722	grave	No	Outside

Name	Latitude	Longitude	Description	Impacted	Comment
					RoW
VAL43	-28.6836389	29.6344444	grave	No	Outside RoW
VAL42	-28.6836389	29.6344167	grave	No	Outside RoW
VAL40	-28.6836389	29.6336389	grave	No	Outside RoW
VAL41	-28.6839722	29.6338889	grave	No	Outside RoW
Maconochie Koppies	-28.684165	29.579507	2ABW feature	No	Outside RoW
Mungers Drift	-28.684507	29.621609	2ABW feature	No	Outside RoW
GLK070e	-28.6845148	29.6385977	Battle of Vaalkrans: 5-7 Feb. 1900. British occupation	No	Outside RoW
304	-28.685459	29.633678	grave	No	Outside RoW
306	-28.68595	29.633939	Grave	No	Outside RoW
305	-28.685989	29.633968	Grave	No	Outside RoW
46	-28.68613	29.633968	walling	No	Outside RoW
307	-28.686165	29.633944	Grave	No	Outside RoW
VAL47	-28.6862778	29.6343056	Grave	Yes	mitigated
Potgieters Drift	-28.686286	29.565584	2ABW feature	No	Outside RoW
VAL50	-28.6875833	29.6356389	Grave	No	Outside RoW
VAL51	-28.6875898	29.6356514	Grave	No	Outside RoW
050 1a	-28.687713	29.635962	Grave	No	Outside RoW
VAL52	-28.6877222	29.6359722	Grave	No	Outside RoW
VAL53	-28.6878333	29.6358333	Grave	No	Outside RoW
49	-28.688447	29.6358	2ABW artefact	Yes	mitigated
VAL54	-28.689	29.6360556	stone walling	Yes	mitigated
308	-28.689033	29.635798	2ABW artefact	No	Outside RoW
56	-28.69266	29.638941	2ABW artefact	Yes	mitigated
135D	-28.694074	29.639649	2ABW artefact	Yes	mitigated
137D	-28.694206	29.639787	2ABW artefact	Yes	mitigated
136D	-28.694216	29.639758	2ABW artefact	Yes	mitigated
133D	-28.695368	29.640134	2ABW artefact	Yes	mitigated
134D	-28.695368	29.640025	2ABW artefact	Yes	mitigated
VAL55	-28.6973056	29.6405	grave	Yes	mitigated
Swartkoppies	-28.704523	29.589708	2ABW Feature	No	Outside RoW
138D	-28.705566	29.641303	2ABW artefact	Yes	mitigated
139D	-28.705583	29.641203	2ABW artefact	Yes	mitigated
Naval Gun Hill	-28.706462	29.559017	2ABW Feature Naval Gun Hill	No	Outside RoW
140D	-28.709579	29.643214	2ABW artefact	Yes	mitigated
VAL57	-28.7101667	29.6438889	Grave	No	near RoW
141D	-28.711117	29.644408	2ABW artefact	Yes	mitigated
58	-28.711553	29.645677	walling	Yes	mitigated
57	-28.711848	29.645874	walling	Yes	mitigated
LSA LIA	-28.711863	29.644998	2ABW artefact	Yes	mitigated
59	-28.712684	29.645673	2ABW artefact	Yes	mitigated
160D	-28.712696	29.645459	2ABW artefact	Yes	mitigated
60	-28.71646	29.64755	2ABW artefact	Yes	mitigated

Name	Latitude	Longitude	Description	Impacted	Comment
VAL61	-28.7168889	29.6481111	Grave	No	Outside RoW
VAL067	-28.716964	29.64869	Grave	No	Outside RoW
VAL66	-28.7171111	29.6488056	Grave	No	Outside RoW
VAL62	-28.7171111	29.6479444	Grave	No	Outside RoW
063 1	-28.717124	29.648793	Grave	No	Outside RoW
64	-28.717126	29.647973	2ABW artefact	No	Outside RoW
VAL65	-28.7171389	29.64875	Grave	No	Outside RoW
VAL63	-28.7171667	29.6480278	Grave	No	Outside RoW
VAL11	-28.7180833	29.6508889	Grave	No	Outside RoW
VAL12	-28.7182222	29.6506944	Grave	No	Outside RoW
B05a	-28.718504	29.650972	Walling	No	Outside RoW
GLK075 K7	-28.718504	29.650972	2ABW artefact	No	Outside RoW
VAL13	-28.7185278	29.6510278	Grave	No	Outside RoW
GLK075 K6	-28.718635	29.650076	Stone walling	No	Outside RoW
GLK075 K5	-28.718718	29.649491	Stone walling	No	Outside RoW
GLK075 K8	-28.718815	29.651006	Stone walling	No	Outside RoW
VAL14	-28.7190278	29.6499722	Grave	No	Outside RoW
GLK075 K4	-28.719036	29.64896	Stone walling	No	Outside RoW
Two houses	-28.7196069	29.6482596	Houses	Yes	mitigated
GLK075	-28.7197073	29.6486458	Recent houses and 2x graves	Yes	mitigated
GLK075 GRAVE	-28.71974	29.648031	Grave	No	mitigated
GLK075 K2	-28.71986	29.648373	stone walling	No	near RoW
MT ALYCE	-28.721454	29.5429	2ABW Feature	No	Outside RoW
GLK076b	-28.7257333	29.6512556	Recent houses	No	Outside RoW
VAL6	-28.7259444	29.6488611	Grave	No	Outside RoW
GLK076a	-28.7266449	29.6491447	Recent houses and walling	No	Outside RoW
VAL7	-28.7266944	29.6491944	Grave	No	Outside RoW
VAL3A	-28.7269722	29.6489444	Grave	No	Outside RoW
VAL1A	-28.726984	29.648957	Grave	No	Outside RoW
VAL2	-28.727421	29.649688	Grave	No	Outside RoW
VAL3	-28.727479	29.650073	grave	No	Outside RoW
GLK077 engraving1	-28.729347	29.648587	engraving	No	Outside RoW
GLK077	-28.7293664	29.6480137	Engravings and possible walling	No	Outside RoW
GLK074	-28.7320275	29.6491182	Walling under Acacia	No	Outside RoW

Name	Latitude	Longitude	Description	Impacted	Comment
KP243.580	-28.73255	29.64834	grave	No	mitigated
VAL9	-28.7327222	29.6483056	grave	No	mitigated
VAL1	-28.7361667	29.64775	grave	No	Outside RoW
Engraving	-28.7394333	29.6523167	Engraving ABW	Yes	mitigated
VAL135	-28.7403917	29.651	Grave	No	Outside RoW
VAL136	-28.7404167	29.6510833	Grave	No	Outside RoW
Mount Alice Farm	-28.740494	29.536487	2ABW feature Mount Alice	No	Outside RoW
GLK072a	-28.7414827	29.6578317	Historical graves, stone walling	No	Outside RoW
017a	-28.741706	29.653042	2ABW artefact	No	Outside RoW
GLK072b	-28.7420556	29.6574444	2 x Circular stone walling	No	Outside RoW
VAL8	-28.7421111	29.6525556	Grave	No	Outside RoW
GLK073b	-28.7425002	29.6556782	Recent walling and graves	No	Outside RoW
015a	-28.742831	29.65391	2ABW artefact	No	Outside RoW
GLK073a	-28.7428334	29.6567222	Walling?	No	Outside RoW
16	-28.742927	29.653782	13-NOV-09 8:38:51AM	No	Outside RoW
GLK071b	-28.7431389	29.6592222	Historical grave	No	Outside RoW
GLK071a	-28.7437453	29.6598138	Stone walling. Colonel Baker?	No	Outside RoW
PDF1	-28.761825	29.679275	Stone walling, graves?	No	Outside RoW
2829DC 026	-28.766111	29.701667	Engraving: single circle	No	Outside RoW
609	-28.76778	29.676431	Archaeological feature	No	near RoW
612	-28.768002	29.67443	Archaeological feature	No	Outside RoW
610	-28.768101	29.675697	Archaeological feature	No	Outside RoW
611	-28.768132	29.674888	Archaeological feature	No	Outside RoW
613	-28.768467	29.677131	Archaeological feature	Yes	mitigated
13	-28.768798	29.67706	Archaeological feature	Yes	excavated
GLK078d	-28.7702319	29.6794716	Stone walling, 2x graves?	No	Outside RoW
GLK078b	-28.7705472	29.6768889	Historical/LIA stone walling & graves	Yes	mitigated & excavated
631	-28.770646	29.676844	walling 2009/10/22 08:43:37 AM	No	Outside RoW
630	-28.770652	29.676872	2XGRAVES	No	Outside RoW
633	-28.77069	29.676622	Engravings over entire hill	No	Outside RoW
621	-28.770755	29.67751	Engraving	No	Outside RoW
632	-28.770755	29.676807	Engraving	No	Outside RoW
623	-28.770758	29.677411	Engraving	No	Outside RoW
643	-28.770803	29.676841	Engraving	No	Outside RoW

Name	Latitude	Longitude	Description	Impacted	Comment
622	-28.770837	29.677541	Engraving	No	Outside RoW
624	-28.770837	29.677264	Engraving	No	Outside RoW
644	-28.770857	29.67668	Engraving	No	Outside RoW
618	-28.77098	29.677732	Engraving	No	Outside RoW
656	-28.770984	29.676814	Engraving	No	Outside RoW
619	-28.770991	29.677715	Engraving	No	Outside RoW
628	-28.771001	29.677503	Engraving	No	Outside RoW
620	-28.771008	29.677756	Engraving	No	Outside RoW
626	-28.771062	29.677534	Engraving	No	Outside RoW
642	-28.771079	29.677261	Engraving	No	Outside RoW
617	-28.77109	29.677842	Engraving	No	Outside RoW
625	-28.771151	29.677572	Engraving	No	Outside RoW
641	-28.771178	29.67721	Engraving	No	Outside RoW
640	-28.771264	29.677251	Engraving	No	Outside RoW
645	-28.771305	29.676493	Engraving	No	Outside RoW
657	-28.771356	29.67668	Engraving	No	Outside RoW
89	-28.771366	29.676759	Engraving	No	Outside RoW
646	-28.771376	29.676496	Engraving	No	Outside RoW
639	-28.771383	29.677288	Engraving	No	Outside RoW
664	-28.771458	29.676821	Engraving	No	Outside RoW
647	-28.771506	29.676513	Engraving	No	Outside RoW
635	-28.771523	29.676308	Engraving	No	Outside RoW
654	-28.77153	29.677162	Engraving	No	Outside RoW
655	-28.77154	29.677141	Engraving	No	Outside RoW
634	-28.771554	29.676435	Engraving	No	Outside RoW
653	-28.771588	29.677182	Engraving	No	Outside RoW
665	-28.771626	29.676742	Engraving	No	Outside RoW
663	-28.771629	29.677087	Engraving	No	Outside RoW
638	-28.771633	29.677357	Engraving	No	Outside RoW
648	-28.771646	29.676496	Engraving	No	Outside RoW
662	-28.771653	29.677165	Engraving	No	Outside RoW
666	-28.771663	29.676817	Engraving	No	Outside RoW
661	-28.77167	29.676827	Engraving	No	Outside RoW

Name	Latitude	Longitude	Description	Impacted	Comment
667	-28.77168	29.676926	Engraving	No	Outside RoW
659	-28.771701	29.676742	Engraving	No	Outside RoW
660	-28.771704	29.676769	Engraving	No	Outside RoW
668	-28.771711	29.677107	Engraving	No	Outside RoW
627	-28.771715	29.677466	Engraving	No	Outside RoW
615	-28.771752	29.678603	Engraving	Yes	mitigated
658	-28.771766	29.676704	Engraving	No	Outside RoW
650	-28.771834	29.677162	Engraving	No	Outside RoW
649	-28.771851	29.676739	Engraving	No	Outside RoW
637	-28.771872	29.677295	Engraving	No	Outside RoW
652	-28.771875	29.677258	Engraving	No	Outside RoW
651	-28.771885	29.677244	Engraving	No	Outside RoW
616	-28.771892	29.678043	Engraving	No	Outside RoW
089a	-28.771892	29.677278	Engraving	No	Outside RoW
636	-28.771906	29.67723	Engraving	No	Outside RoW
88	-28.771916	29.677299	Engraving	No	Outside RoW
17	-28.77196	29.678791	Engraving	Yes	mitigated
20	-28.771977	29.678767	Engraving	Yes	mitigated
019b	-28.773057	29.680215	Engraving	Yes	excavated
90	-28.773135	29.680229	Engraving	Yes	excavated
75	-28.773152	29.677049	walling	No	Outside RoW
82	-28.773241	29.679973	Engraving	Yes	excavated
84	-28.773279	29.678839	walling	No	Outside RoW
86	-28.773432	29.678036	walling	No	Outside RoW
80	-28.773456	29.678883	walling	No	Outside RoW
83	-28.773873	29.678931	Engraving	No	Outside RoW
79	-28.77405	29.678672	walling	No	Outside RoW
81	-28.774327	29.678521	walling	No	Outside RoW
GLK078a	-28.7744527	29.6784947	LIA/Historical walling and graves	No	Outside RoW
76	-28.774457	29.676926	walling	No	Outside RoW
GLK078e	-28.774463	29.6822664	Recent settlement; kraal, houses, 9+graves	No	Outside RoW
A46	-28.774713	29.678091	Engraving	No	Outside RoW
103	-28.774942	29.67833	Engraving	No	Outside RoW
102	-28.775003	29.678408	Engraving	No	Outside RoW
1021	-28.775003	29.678408	Engraving	No	Outside RoW
77	-28.775003	29.676892	walling	No	Outside

Name	Latitude	Longitude	Description	Impacted	Comment
					RoW
109	-28.775013	29.678064	Engraving	No	Outside RoW
108	-28.77502	29.678163	Engraving	No	Outside RoW
101	-28.77502	29.678023	Engraving	No	Outside RoW
110	-28.775024	29.678091	Engraving	No	Outside RoW
100	-28.775024	29.678023	Engraving	No	Outside RoW
111	-28.775031	29.67807	Engraving	No	Outside RoW
112	-28.775041	29.678046	Engraving	No	Outside RoW
78	-28.775051	29.676957	walling	No	Outside RoW
A45	-28.775058	29.678265	Engraving	No	Outside RoW
114	-28.775174	29.678046	Engraving	No	Outside RoW
118	-28.775191	29.678111	Engraving	No	Outside RoW
113	-28.775198	29.678002	Engraving	No	Outside RoW
104	-28.775232	29.678439	Engraving	No	Outside RoW
85	-28.775256	29.677889	Engraving	No	Outside RoW
105	-28.77529	29.67848	Engraving	No	Outside RoW
115	-28.775304	29.678077	Engraving	No	Outside RoW
116	-28.775403	29.678159	Engraving	No	Outside RoW
117	-28.77542	29.678272	Engraving	No	Outside RoW
106	-28.775478	29.678497	Engraving	No	Outside RoW
93	-28.775485	29.679471	Engraving	No	Outside RoW
92	-28.775533	29.67888	Engraving	No	Outside RoW
91	-28.775577	29.678832	Engraving	No	Outside RoW
107	-28.775922	29.678497	Engraving	No	Outside RoW
Grave	-28.7761878	29.6826038	Grave	No	Outside RoW
607	-28.78379	29.686523	Grave	No	Outside RoW
GLK079	-28.7842881	29.6889423	Historical Stone Walling	No	Outside RoW
2829DC 016	-28.7858334	29.6828055	Engravings	No	Outside RoW
GLK080	-28.7911116	29.68784	Historical stone walling: kraal & houses	No	Outside RoW
GLK081	-28.7920478	29.6877825	Stone walling, houses and graves. Historical	No	Outside RoW
94	-28.792591	29.687537	grave	No	Outside RoW
GLK082a1	-28.7944308	29.6871548	Graves 03-MAR-10 10:00:41AM	No	mitigated
96	-28.794824	29.687202	grave	No	Outside

Name	Latitude	Longitude	Description	Impacted	Comment
					RoW
GLK082	-28.7956944	29.6914444	Historical buildings: house and church	No	Outside RoW
GLK082a	-28.79615	29.69095	Graves 03-MAR-10 10:00:41AM	No	Outside RoW
PDF02	-28.8013722	29.7053083	Stone wall/circle	No	Outside RoW
GLK127	-28.810477	29.6936464	Modern Grave	No	mitigated
GLK086	-28.8207472	29.7305583	General location of graves and settlement	No	Outside RoW
GLK083b	-28.8301667	29.7449167	Historical buildings, Churchill prison, Boer encampment	No	Outside RoW
GLK083a	-28.8314444	29.7445556	Piet Retief Monitoredument, general Piet Retief laager	No	Outside RoW
GLK087	-28.8375278	29.7465278	Historical buildings	No	Outside RoW
315	-28.850112	29.722466	graves.	No	near RoW
A23A	-28.85012	29.722496	03-MAR-10 9:40:09AM recent settlement	No	near RoW
314	-28.850311	29.722526	graves	No	near RoW
006a	-28.861416	29.731048	cairn	No	near RoW
005a	-28.861568	29.730888	cairn	No	near RoW
GLK088a	-28.8680611	29.7614889	Boer positions at train attack. Churchill ambush point	Yes	mitigated
GLK128	-28.8718918	29.7529905	Fossil trees all over hill	Yes	mitigated
GLK088b	-28.8735528	29.7680305	Churchill memorial	Yes	permitted
GLK088c	-28.8752667	29.7669972	Original railway lines	Yes	permitted
VAL21	-28.8775556	29.76	metal artefact	Yes	mitigated
19	-28.877878	29.760361	metal artefact	Yes	mitigated
022a	-28.87833	29.761004	metal artefact	Yes	mitigated
27	-28.878397	29.761321	metal artefact	Yes	mitigated
VAL23	-28.8793333	29.7612222	Grave	No	Outside RoW
VAL24	-28.8793889	29.7613056	Grave	No	Outside RoW
VAL25	-28.8794444	29.7613611	Grave	No	Outside RoW
564b1	-28.88236	29.765944	grave?	No	mitigated
GLK090	-28.8825167	29.7663833	Coronation brick with lime(?) plaster & stonewalling	No	mitigated
GLK091	-28.8860973	29.7735222	Stone walling	No	Outside RoW
321	-28.888442	29.774961	grave	No	mitigated
322	-28.888445	29.774782	grave	No	mitigated; near RoW
GLK089	-28.8940139	29.7675084	Frere military Camp. 2nd Anglo-Boer War. British 1899-1900	No	Outside RoW
1516	-28.907253	29.801055	Stone Walling	No	Outside RoW
1513	-28.907447	29.802134	Stone Walling	No	Outside RoW
1511	-28.908803	29.801652	Stone Walling	No	Outside RoW
1510	-28.909193	29.802202	Stone Walling	No	Outside

Name	Latitude	Longitude	Description	Impacted	Comment
					RoW
1507	-28.910313	29.80184	Stone Walling	No	Outside RoW
1508	-28.910337	29.801844	Stone Walling	No	Outside RoW
564	-28.910364	29.795434	Walling	No	Outside RoW
564b	-28.910364	29.795434	Grave	Yes	excavated
99	-28.910412	29.796417	Stone Walling	Yes	excavated
1509	-28.910644	29.801649	Stone Walling	Yes	excavated
555	-28.910876	29.796817	Stone Walling	Yes	excavated
556	-28.911098	29.796977	Stone Walling	Yes	excavated
557	-28.911593	29.797339	Stone Walling	Yes	excavated
GLK092	-28.9117861	29.7971945	Stone walling, graves?	No	Outside RoW
558	-28.911925	29.79792	Stone Walling	Yes	excavated
559	-28.912317	29.798507	grave?	No	mitigated
560	-28.912341	29.798504	Stone Walling	Yes	excavated
1504a	-28.912744	29.800078	Grave	No	Outside RoW
577	-28.912802	29.799706	Grave	No	Outside RoW
578a	-28.91285	29.800075	Grave	No	Outside RoW
565	-28.913202	29.798702	Stone Walling	No	Outside RoW
561	-28.913567	29.798302	Stone Walling	No	Outside RoW
562	-28.913944	29.7983889	Grave	No	Outside RoW
563	-28.913987	29.798248	Stone Walling	No	Outside RoW
98	-28.915797	29.80127	Stone Walling	No	Outside RoW
GLK093	-28.9163222	29.8008167	Stone walling	No	Outside RoW
GLK094	-28.9181584	29.8046	Unusual Stone walling	No	Outside RoW
KP210.100	-28.9580194	29.8539167	Grave	?	no access
B04a	-28.998299	29.893221	Grave	0	near RoW
GLK095a	-29.0083333	29.8883889	Maritz Memorial	No	Outside RoW
GLK095b	-29.0088889	29.8911111	Rudolph cemetery; 1806 - 1980s	No	Outside RoW
GLK096	-29.0139722	29.8943889	Historical houses	No	Outside RoW
KP200.260	-29.02085	29.9005	Grave	No	mitigated
317	-29.073441	29.981744	Grave	No	Outside RoW
318	-29.0736	29.981635	Grave	No	Outside RoW
320	-29.074337	29.979716	Grave	No	Outside RoW
319	-29.075401	29.97703	Grave	No	Outside RoW
KP189*13	-29.07919	29.97545	Grave	Yes	destroyed
GLK104	-29.1736683	30.0394537	Trees	No	near RoW
GLK104 start	-29.173868	30.03835	Trees	No	near RoW
GLK104 start1	-29.173868	30.03835	Trees	No	near RoW
H76	-29.2001944	30.0250277	Polo Field, est. 1886	No	Outside RoW
GLK101	-29.2019611	30.0301333	Horse burials	No	Outside RoW

Name	Latitude	Longitude	Description	Impacted	Comment
GLK102	-29.2045167	30.0389223	Trees	No	Outside RoW
154D	-29.206901	30.0416	Metal artefact	No	Outside RoW
152D	-29.207414	30.04161	Metal artefact	No	Outside RoW
GLK103	-29.2076357	30.0407561	Trees	No	Outside RoW
155D	-29.207717	30.041767	Metal artefact	No	Outside RoW
156D	-29.207826	30.041766	Metal artefact	No	Outside RoW
157D	-29.208164	30.041887	Metal artefact	No	Outside RoW
159D	-29.208299	30.041732	Metal artefact	No	Outside RoW
158D	-29.208441	30.041848	Metal artefact	No	Outside RoW
H81	-29.2094111	30.0247167	Historical Buildings	No	Outside RoW
H72	-29.2096666	30.0223056	Helen Bridge (1866)	No	Outside RoW
H71	-29.2116666	30.02675	Original Greytown Road	No	Outside RoW
H80	-29.2145834	30.03025	2nd Anglo-Boer War buildings occupied by British doctors	No	Outside RoW
GLK100	-29.2161194	30.0339778	Weston College: Historical buildings, British encampments. no. 6 Remount depot 1899-1902	No	Outside RoW
H70	-29.2207862	30.0321389	No. 6 Remount Depot 1899-1902	No	Outside RoW
H69	-29.2303611	30.0190556	Historical Dump c. 1899	No	Outside RoW
GLK097 start	-29.3325222	30.1040195	Historic walling	Yes	mitigated
GLK097 middle	-29.3343558	30.1052542	Historic stone walling	No	Outside RoW
GLK097 end	-29.3363266	30.1067537	Historic walling	Yes	mitigated
GLK098	-29.3375639	30.1148139	Stone walling	No	Outside RoW
2930AC 023	-29.489444	30.206667	MSA	Yes	mitigated
GLK114	-29.4996363	30.2204881	Anglo-Boer War hospital, concentration camp, washing area, recovery ward	No	Outside RoW
GLK099	-29.5007278	30.2300611	Anglo-Boer war memorial	No	Outside RoW
2930CB 067	-29.638611	30.460556	EIA	Yes	Monitored
GLK105	-29.643	30.464	House: Ashburton	No	near RoW
2930CB 066	-29.646111	30.464167	MSA	Yes	Monitored
GLK108	-29.6522778	30.4695834	LIA/HP	No	Outside RoW
GLK106	-29.6527778	30.4717777	MSA scatter	Yes	Monitored
GLK107	-29.6551111	30.4731667	MSA & LIA	Yes	Monitored
GLK109	-29.6605278	30.47775	MSA	No	Outside RoW
GLK110	-29.6775278	30.49775	MSA	No	Outside RoW
2930CB 063	-29.69	30.487222	MSA	No	Outside RoW

Name	Latitude	Longitude	Description	Impacted	Comment
KP75.601	-29.797111	30.520444	Grave	No	Outside RoW
KP75.600	-29.79725	30.520528	Grave	No	Outside RoW
GLK112	-29.8075833	30.7500278	LIA Pottery	No	Outside RoW
GLK113	-29.8075833	30.7500278	LIA Pottery	No	Outside RoW
KP73.3	-29.81625	30.5219167	industrial waste (not graves)	Yes	In RoW
KP73.2	-29.8176389	30.5218334	Possible graves	No	mitigated
KP73.1	-29.8179722	30.5220556	Possible graves	No	mitigated
GLK111	-29.8367777	30.5247778	Building. Historical?	No	near RoW
2930DD 132	-29.853889	30.923611	IIA	No	Outside RoW
2930DD 125	-29.854167	30.931389	IIA	No	Outside RoW
2930DD 133	-29.856111	30.928333	IIA	No	Outside RoW
2930DD 116	-29.8625	30.946944	IIA	No	Outside RoW
2930DD 123	-29.868333	30.962778	LSA	No	Outside RoW
KP3.500	-29.917233	30.992191	Grave (community claim)	No	Outside RoW
A107G	-29.9865794	30.6662659	Grave (community claim)	No	Outside RoW
KP45.650	-29.987139	30.684806	Grave (community claim)	No	Outside RoW
A110GB	-29.9875426	30.6596483	Grave (community claim)	No	Outside RoW
A109GB	-29.9876005	30.6626643	Grave (community claim)	No	Outside RoW
KP48.250	-29.987917	30.660417	graves (community claim?)	No	near RoW
KP37.200	-29.991083	30.765806	Grave (community claim)	No	near RoW
KP37.250	-29.991306	30.765611	Grave (community claim)	No	near RoW
KP37.100	-29.991361	30.766361	Grave (community claim)	No	near RoW
B34G	-29.9913976	30.765651	Grave (community claim)	No	near RoW
C13G	-29.9923946	30.7601155	Grave (community claim)	No	Outside RoW
B60G	-29.9924239	30.7463807	Grave (community claim)	No	Outside RoW
KP37.950	-29.992722	30.757806	Grave (community claim)	No	Outside RoW
B66G2	-29.9930684	30.7354221	Grave (community claim)	No	Outside RoW
KP39.500	-29.993083	30.745028	Grave (community claim)	No	Outside RoW
B66G1	-29.9931062	30.7357013	Grave (community claim)	No	Outside RoW
KP39.600	-29.993167	30.744083	Grave (community claim)	No	Outside RoW
A88G1	-29.9945874	30.7244662	Grave (community claim)	No	Outside RoW
A88G	-29.9946707	30.724194	Grave (community claim)	No	Outside RoW
C21G	-29.994791	30.7821128	Grave (community claim)	No	Outside RoW
C58G	-29.99514	30.701326	Grave (community claim)	No	Outside RoW
KP43.850	-29.995278	30.701222	Grave (community claim)	No	Outside

Name	Latitude	Longitude	Description	Impacted	Comment
			claim)		RoW
KP42.100	-29.996833	30.718	Grave (community claim)	No	Outside RoW
KP42.101	-29.997028	30.717944	Grave (community claim)	No	Outside RoW
2930DD 117	-29.998889	30.918889	LIA	No	Outside RoW
KP30.800	-30.0074	30.82011	Grave (community claim)	No	Outside RoW
KP31	-30.008056	30.816778	Grave (community claim)	No	Outside RoW
A31G	-30.0102	30.8259199	Grave (community claim)	No	Outside RoW
KP28.600	-30.019361	30.835361	Grave (community claim)	No	Outside RoW
3030BB 092	-30.023889	30.883056	MSA/IIA	No	Outside RoW
A8G	-30.0250552	30.8506321	Grave (community claim)	No	Outside RoW
3030BB 091	-30.026111	30.887778	ESA/MSA/LSA/IIA	No	Outside RoW
024c	-30.026916	30.858863	Community claim graves: not taken further 2009/08/12 08:59:43 AM	No	Outside RoW
023c	-30.026974	30.859502	Community claim graves: not taken further 2009/08/12 08:39:00 AM	No	Outside RoW
3030BB 090	-30.028333	30.891111	MSA/IIA	No	Outside RoW
870	30 00.418	30 49.242	grave	No	Outside RoW

6 APPENDIX B:

Permits from SAHRA and Amafa KZN

Amafa AkwaZulu-Natali

Heritage KwaZulu-Natal

Erfenis KwaZulu-Natal



PO Box 2685

Pietermaritzburg 3200

Tel 033 394 6543

Fax 033 342 6097

email: amafa.pmb@mweb.co.za

website: www.heritagekzn.co.za

PERMIT REF:0009/08

Issued under Section 26 (6) of the KwaZulu- Natal Heritage Act No. 10 of 1997

Approval is hereby given to Mr. Gavin Anderson of 1 Perch Pool, Meerensee, 3901 in accordance with the application received

For the metal detection and mitigation of sites that fall within the 0-100m boundary of the proposed new Multi-Products pipeline project from Durban (KZN) to Jameson Park (Gauteng).

Conditions: This permit is issued subject to the following conditions:-

- 1.1 That the permit is issued strictly for the purpose/s as set out in the application;
- 1.2 That in the event of any contemplated deviation the prior written approval of Amafa-AkwaZulu Natali must be obtained;
- 1.3 In such event, a written motivation in support of such deviation must be submitted to AMAFA-AKWAZULU NATALI for consideration and;
- 1.4 No deviation will be permitted without the prior written approval of Amafa-AkwaZulu Natali.
- 1.5 Where applicable, Amafa-AkwaZulu Natali shall have the right to inspect the site at any time;
- 1.6 Monthly reports are to be submitted to Amafa-AkwaZulu Natali on the work being conducted and the findings;
- 1.7 Monthly reports are to be accompanied by the relevant National Site Record forms;
- 1.8 A final report on the work conducted and the findings must be submitted to Amafa-AkwaZulu Natali not later than thirty three (33) days from the date of expiration of this permit, extensions are negotiable;
- 1.9 Copies of any papers compiled or published as a result of the work conducted or the findings made must be provided to Amafa-AkwaZulu Natali;
- 1.10 Amafa-AkwaZulu Natali shall not be liable for any loss, damage or injuries to any person/s or property caused by any of the activities conducted by the Applicant;
- 1.11 Where artefacts located at the site are, in terms of this permit, exported for research or other purposes, same must be returned immediately upon completion of the research or other activity to Amafa.
- 1.12 All archaeological and paleontological Material become, on discovery, the property of the Province of KwaZulu Natal and must be lodged at the repository of Amafa-AkwaZulu Natali.
- 1.13 It is the responsibility of the Applicant to ensure that artefacts are preserved in its original state while in his/her possession;
- 1.14 The Applicant shall be liable for any damage or destruction caused at any site or to any artefact.
- 1.15 **FAILURE TO COMPLY WITH THESE CONDITIONS WILL RENDER ANY ACTIVITY CONDUCTED UNLAWFUL, AND AMAFA-AKWAZULU NATALI RESERVES THE RIGHT TO CANCEL THIS PERMIT AND TO INSTITUTE CRIMINAL AND/OR CIVIL ACTION AGAINST THE PERSON/S RESPONSIBLE.**
- 1.16 The issuing of this permit does not exempt the Applicant from compliance with any other law, where applicable.

This permit is valid until 30 November 2012 **AND IS NOT TRANSFERABLE.**


For DIRECTOR


DATE


PLACE