

REF: 376HIA

22 February 2019

Att: Mr Andrew Salomon

Archaeological Heritage Impact Assessor
South African Heritage Resources Agency
PO Box 4637
Cape Town
8000

By email: asalomon@sahra.org.za

Dear Mr Salomon,

REQUEST FOR EXEMPTION FROM A HERITAGE IMPACT STUDY: KRIEL POWER STATION LIME PLANT UPGRADE PROJECT, KRIEL, EMALAHLENI LOCAL MUNICIPALITY, MPUMALANGA PROVINCE.

1 INTRODUCTION

This letter constitutes notification of intention to upgrade the Lime Plants at the Kriel Power Station (KPS), Kriel, Mpumalanga Province.

PGS Heritage has been contacted to evaluate the possible heritage impacts by the proposed lime plant upgrade and determine if a heritage impact assessment will be required.

2 PROJECT DESCRIPTION

Savannah Environmental (Pty) Ltd have been appointed by Eskom Holdings SOC Ltd to provide a BAR for their proposal to expand its existing Cooling Water (CW) Treatment facility through the upgrading of the existing lime plant infrastructure within the KPS property by constructing two new lime plants.

3 DESCRIPTION OF THE RECEIVING ENVIRONMENT

The Kriel Power Station is situated within a rural area, specifically designated for power generation, approximately 43km south of eMalahleni (Witbank), 4km north-east of the Matla Power Station and 8km west of the town Kriel (**Figure 1**). The proposed development falls within the jurisdiction of the eMalahleni Local Municipality and within the great Nkangala District Municipality. The affected properties adjacent to Kriel Power Station includes the following: Driefontein 69, Portions 1, 3, 8, 9, 13, 15, 17, 30, 31 and 32 Nooitgedacht 59, Portion 8 Vaalpan 68, Portions 3 and 9 Vlaklaagte 83, Portion 2 Onverwacht 70, Portions 9 and Remainder of Portion 10 Matla Power Station 141.

The study area consists of open grassland that has been heavily disturbed due to the general development of the area combined with the laying of underground cabling and piping over the years (**Figure 2, Figure 3, Figure 4, Figure 5 & Figure 6**).

4 HERITAGE POTENTIAL

The site is heavily disturbed due to the development of the power station in the area and its associated underground infrastructure. Referring to **Figure 8, Figure 9 & Figure 10**, one can see that the area where the proposed lime plants will be constructed remained undeveloped until at least 1984 with no indication of prior structural features (Kriel Power Station was constructed in the late 1970s). After which time, the area experienced intense development for power generation purposed.

No historic, Iron Age or Stone Age heritage sites were noted during the site visit undertaken on 21st February 2019.

Kriel Power Station Lime Plant Upgrade
Locality of Study Area

PGS Heritage (Pty) Ltd
Heritage Management Unit

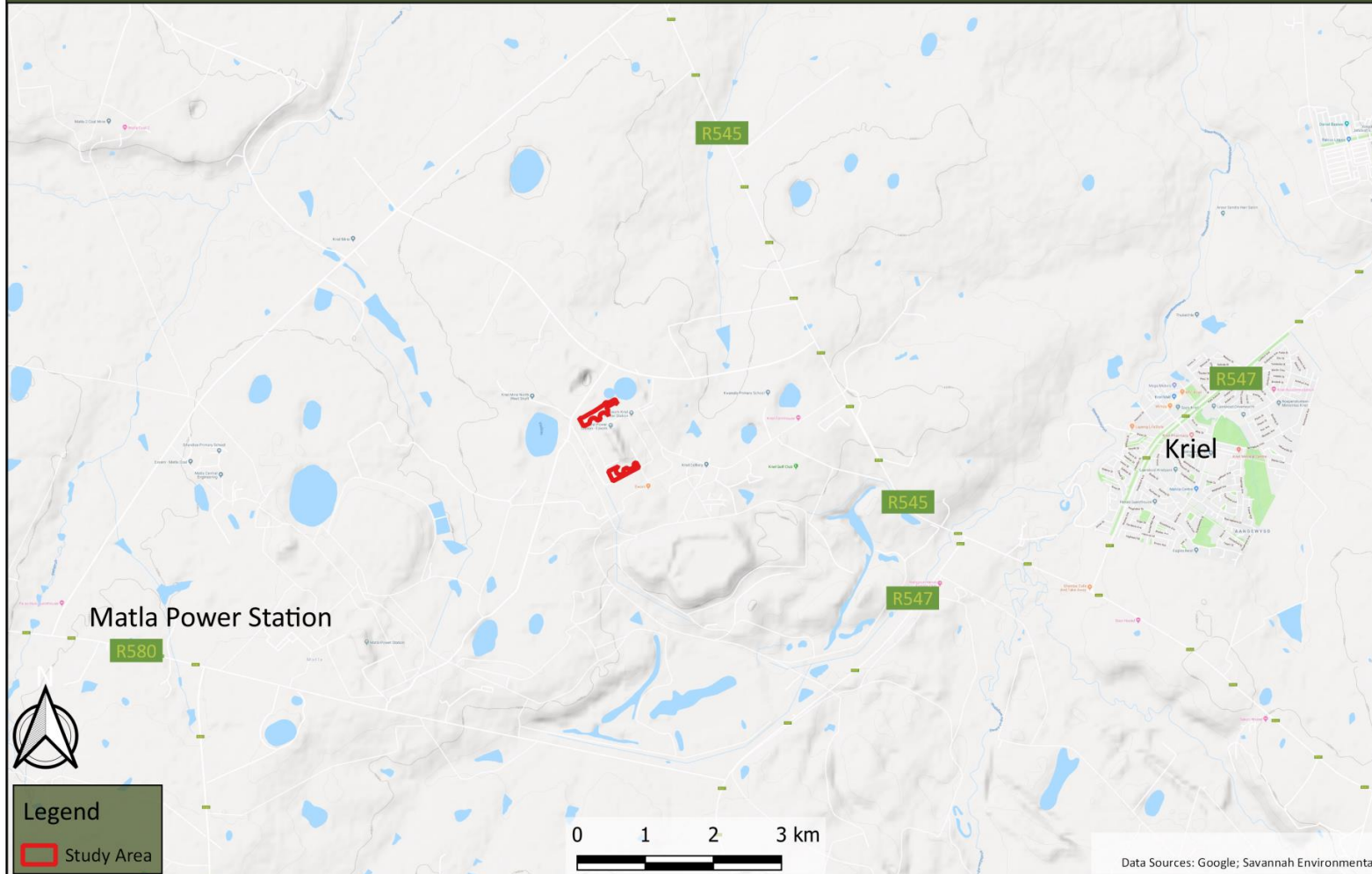


Figure 1 – Locality of the study area





Figure 2 – View of the Kriel generator units in the background, with the northern lime plants and part of the proposed study area in the foreground.



Figure 3 – View of the northern study area. Take note of the pipework above ground and ancillary infrastructure.



Figure 4 – View of the southern study area. Take note of the degree of past soil disturbance.



Figure 5 – Alternate view of the southern study area with one of the preexisting lime plants in the background.

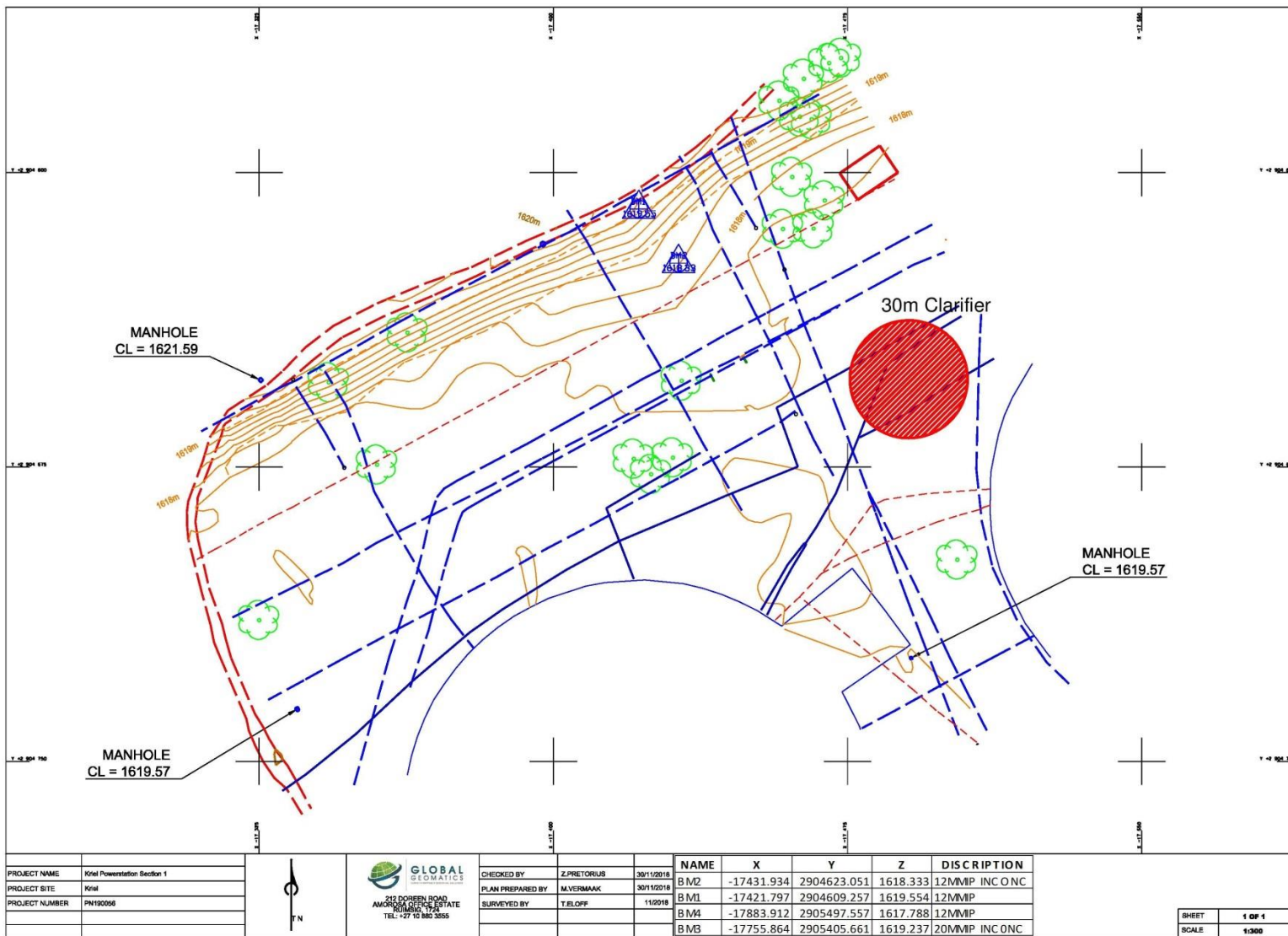


Figure 6 - Diagram of underground piping in the northern study area (Savannah Environmental 2019).

Kriel Power Station Lime Plant Upgrade
Tracklogs from Site Visit (21 February 2019)

PGS Heritage (Pty) Ltd
Heritage Management Unit

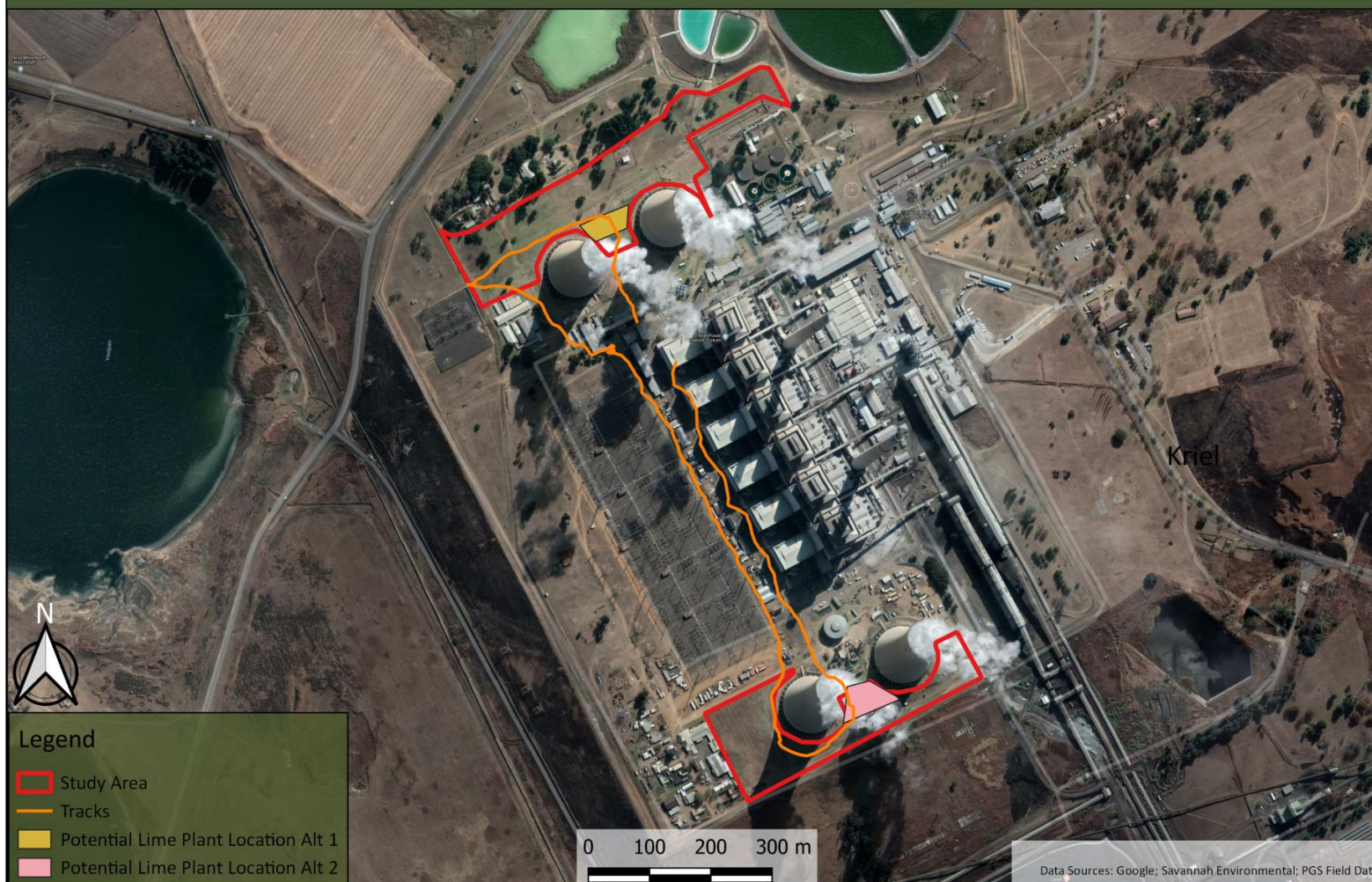


Figure 7 – Track Logs from the site visit undertaken on 7th February 2019 and legacy track logs from a previous survey undertaken by PGS Heritage

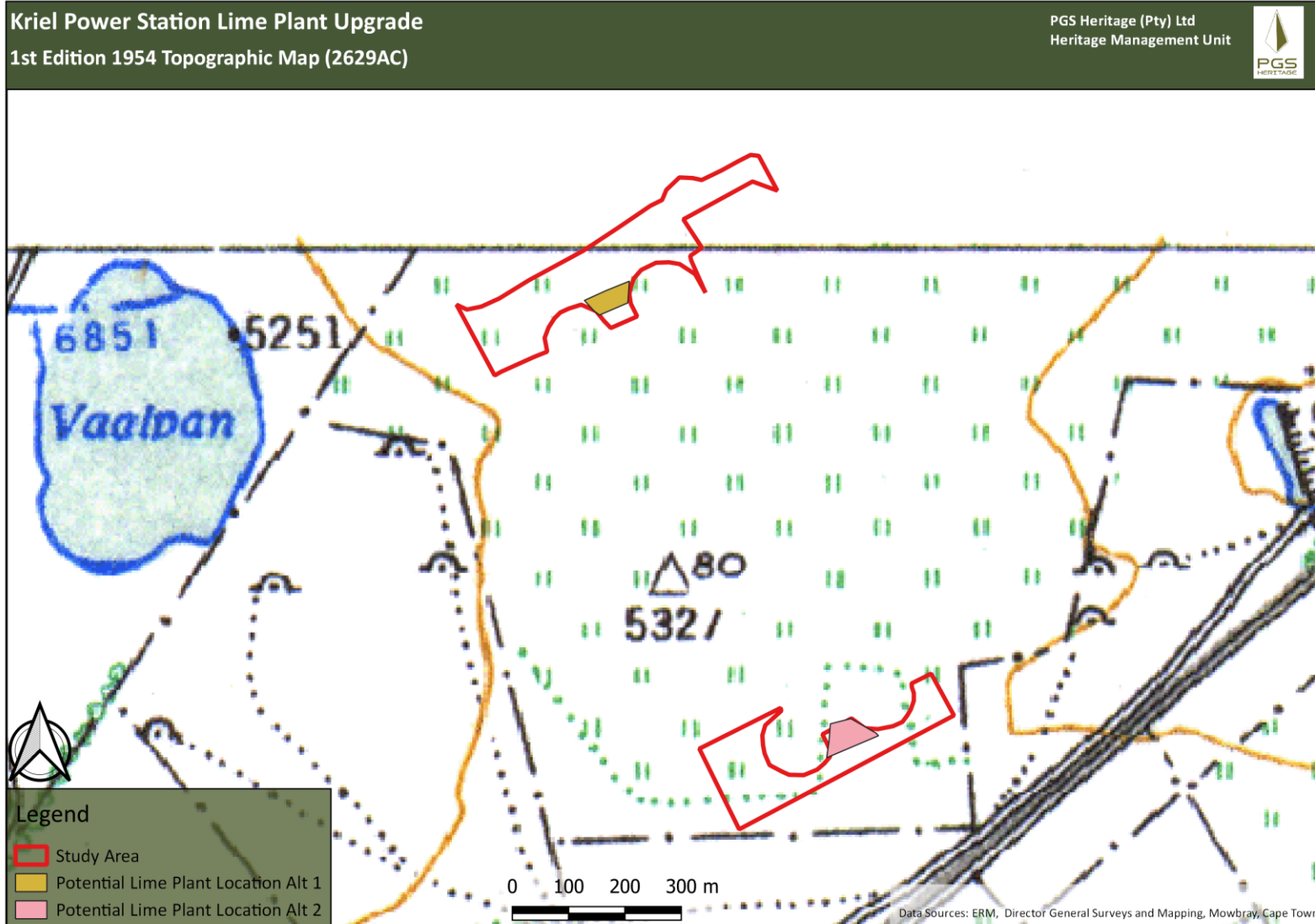


Figure 8 – 1st Edition 1954 Topographic Map (2629AC). Take note that according to map 2629AA, the upper portion of the northern study area also fell upon empty, cultivated terrain.

Kriel Power Station Lime Plant Upgrade
2nd Edition 1984 Topographic Map (2629AC)

PGS Heritage (Pty) Ltd
Heritage Management Unit

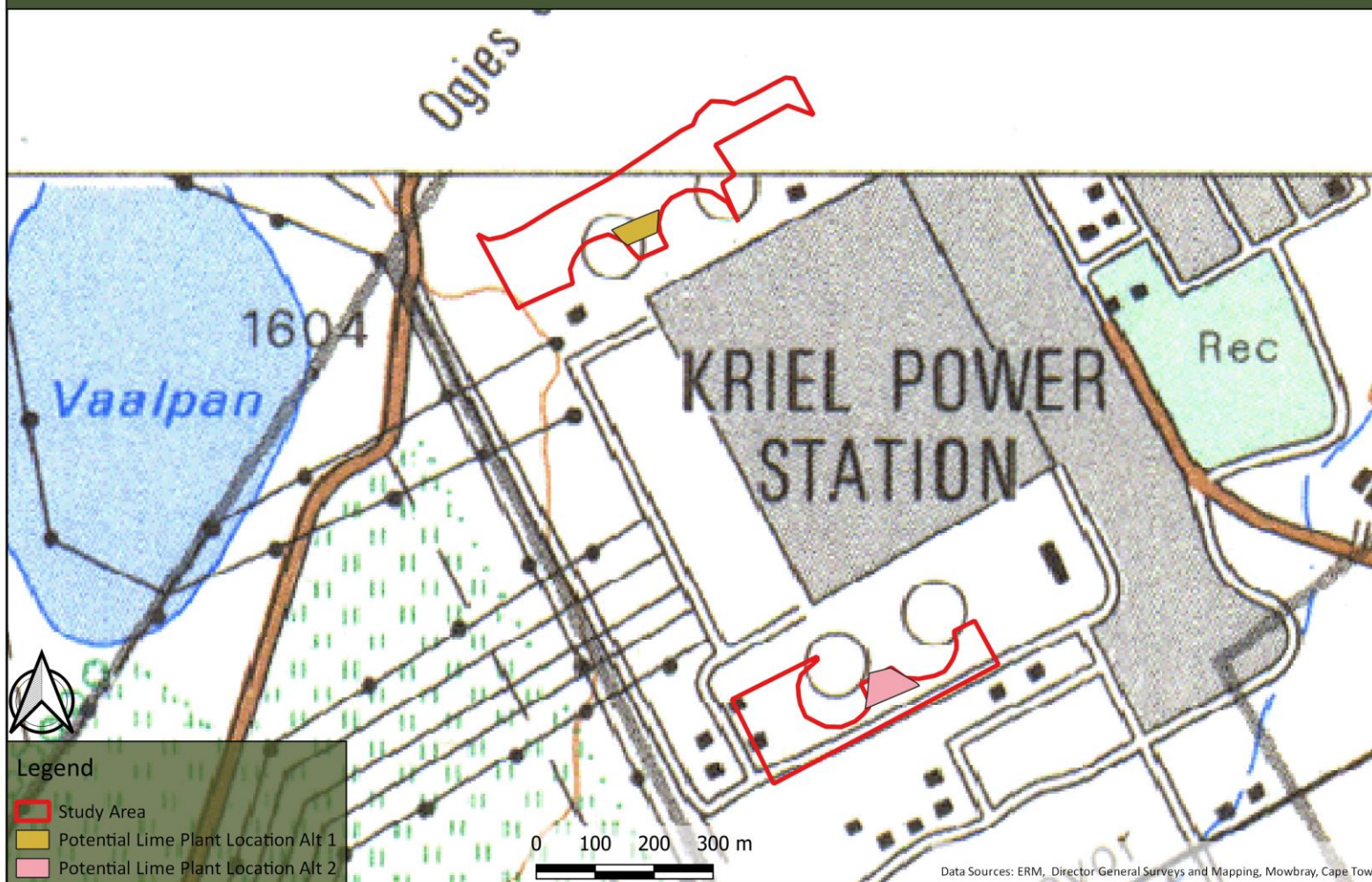


Figure 9 – 2nd Edition 1984 Topographic Map (2629AC).

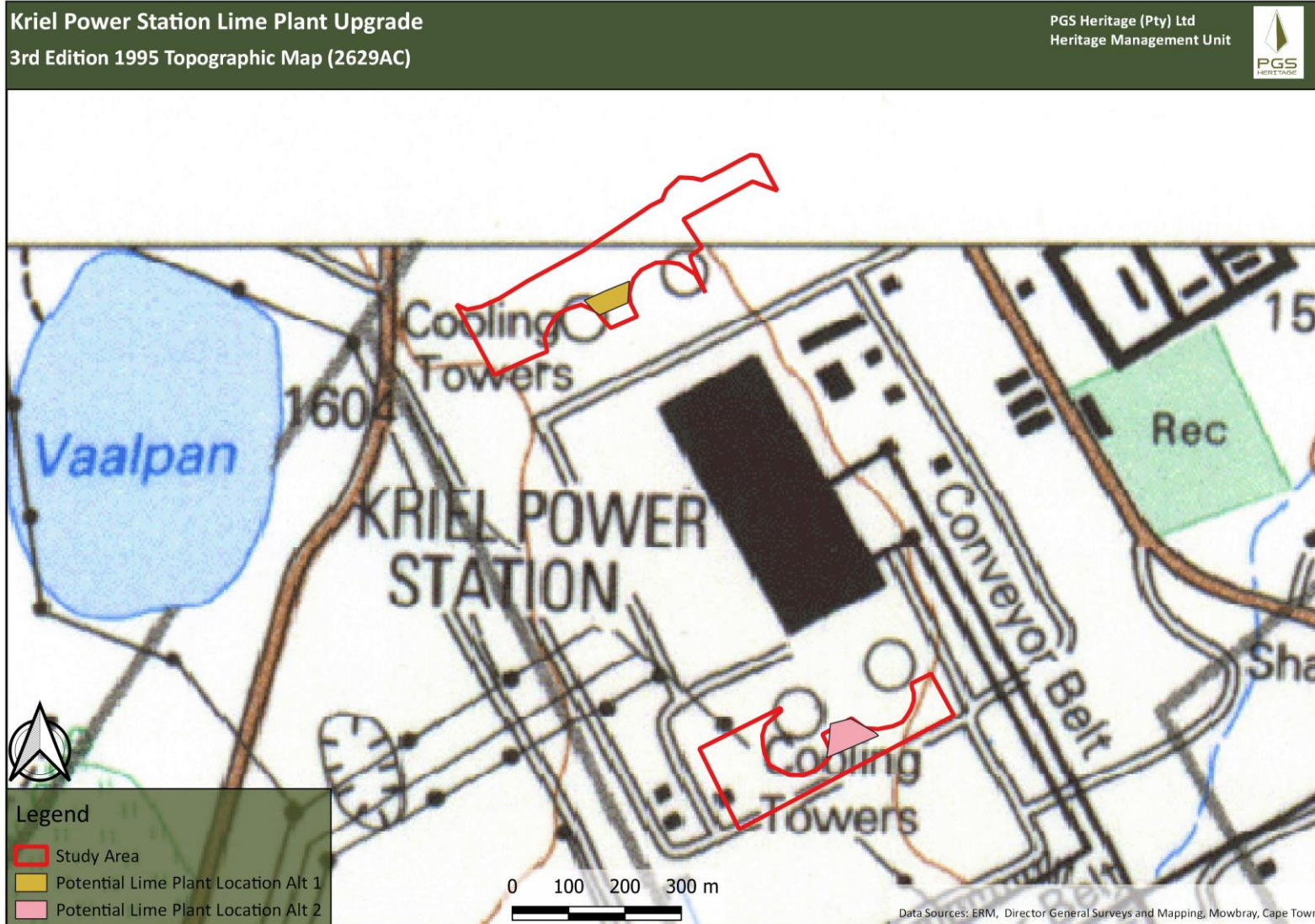


Figure 10 – 3rd Edition 1995 Topographic Map (2629AC).

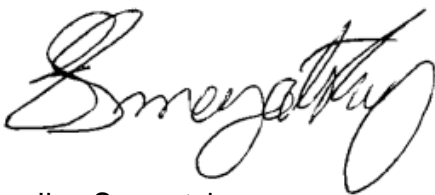
5 CONCLUSIONS AND RECOMMENDATIONS

With regard to the proposed process, the following recommendations are made:

- No further heritage impact assessment of the study area is required.
- In the unlikely event of any unmarked human burials, burial pits, potsherds or stone tools being uncovered during earthworks for the proposed development, these must be reported immediately to the South African Heritage Resources Agency – Burials and Graves Unit (Mrs Thingangwi Thivhase - 012 320 8490 / 4968).

Should you have any queries, please contact Ilan Smeyatsky (email: ilan@pgsheritage.co.za; Tel: (012) 332 5305).

Yours Sincerely



Ilan Smeyatsky

Accredited Professional Archaeologist (ASAPA)

Archaeologist - PGS Heritage

PGS
HERITAGE