

REF: 426HIA

16 November 2019

Archaeological Heritage Impact Assessor
South African Heritage Resources Agency
PO Box 4637
Cape Town
8000

REQUEST FOR EXEMPTION FROM A HERITAGE IMPACT STUDY: SOLINK POWER PROCUREMENT (PTY) LTD (SOLINK) - DEVELOPMENT OF A SMALL-SCALE SOLAR PHOTOVOLTAIC (PV) FACILITY TO SUPPLEMENT PROCESSING POWER REQUIREMENTS FOR THE ADJACENT HEINEKEN SEDIBENG BREWERY, LOCATED WITHIN SEDIBENG IN THE GAUTENG PROVINCE

1 INTRODUCTION

This letter constitutes a notification of intention to development of a small-scale solar photovoltaic (PV) facility to supplement processing power requirements for the adjacent Heineken Sedibeng Brewery, located within Sedibeng in the Gauteng Province.

PGS Heritage has been contacted to evaluate the possible heritage impacts by the proposed developmen and determine if a heritage impact assessment will be required.

2 PROJECT DESCRIPTION

Solink Power Procurement (Pty) Ltd (Solink) is proposing the development of a small-scale solar photovoltaic (PV) facility to supplement processing power requirements for the adjacent Heineken Sedibeng Brewery, located within Sedibeng in the Gauteng Province. The Heineken Sedibeng Brewery is accessible directly off the R550, where it forms part of the Kliprivier Business Park. The PV facility will be 19.9 ha in size and will be located on Graceview EXT

3, Erf 244 (Title Deed: T20324/2018). The project aims to reduce the plant's reliance on the national Eskom power grid and reduce operational costs through utilising a sustainable energy solution. The project is being designed to fall below the thresholds for a Basic Assessment process, and to rather be conducted under the Gauteng Province Environmental Management Framework (GPEMF) registration process, on the assumption that the non-exempted triggering activities may be made redundant through design optimisation.

Solink is considering the installation of a phased PV facility, with the following specifications:

Phase I

- 2.5ha surface area with maximum generation capacity;
- 1MW PV plant;
- 400 V distribution line;
- Completed without submission of an environmental authorisation (by ensuring no listed activities are triggered through adaptive design).

Phase II

- 17.4 ha surface area and 19.9 MW nominal generation capacity;
- 11kV distribution line; and
- Expand the Phase I facility to the maximum permitted size and generation capacity under the Basic Assessment process (conducted in parallel with the construction of Phase I);

Ultimately, the facility is to connect to the Heineken-owned substation (on the neighbouring site), located within the Heineken Sedibeng brewing facility, in order to supply that facility with power for operations.

3 DESCRIPTION OF THE RECEIVING ENVIRONMENT

Survey area – located on vacant land approx. 270m to the south of the Heineken brewery, and west of the R59. Between Eikenhof and Katlehong/Thokoza. Approx. 19km south west of Alberton (**Figure 1**). Most of the surrounding area to is agricultural holdings with some light

industrial developments east of the R59. A small electrical sub-station is located approx. 150m north of the study area (**Figure 2**).

The study area is relatively flat and covered with short veld grass that had been burned quite recently, so the visibility was very good. There is a stand of eucalyptus trees along the western boundary, and quite long grass. A dirt road runs along this western boundary, just inside the boundary. There is a large cleared area on the southern boundary of the study area which is used as a truck parking area (**Figure 3**).

Scattered rock outcrops were observed throughout the study area and a large outcropping of quartzite rocks was noted just outside the north-eastern corner of the study area. This area also had patches of loose stones that had been cleared from the area in the past. The remnants of use as an agricultural field were observed during the site visit (**Figure 4**).

4 HERITAGE POTENTIAL

The site was evaluated by two archaeologists from PGS Heritage and tracklogs taken of the fieldwork activities (**Figure 6**).

No heritage sites were noted within the study area. The larger area, in which the study area is situated, contained some evidence of decorative gardening in the form of stones placed in circles around individual bushes and trees growing next to the dirt road immediately south of the substation.

Solonk-Heineken PV Project Locality Map

PGS Heritage (Pty) Ltd
Heritage Management
Unit

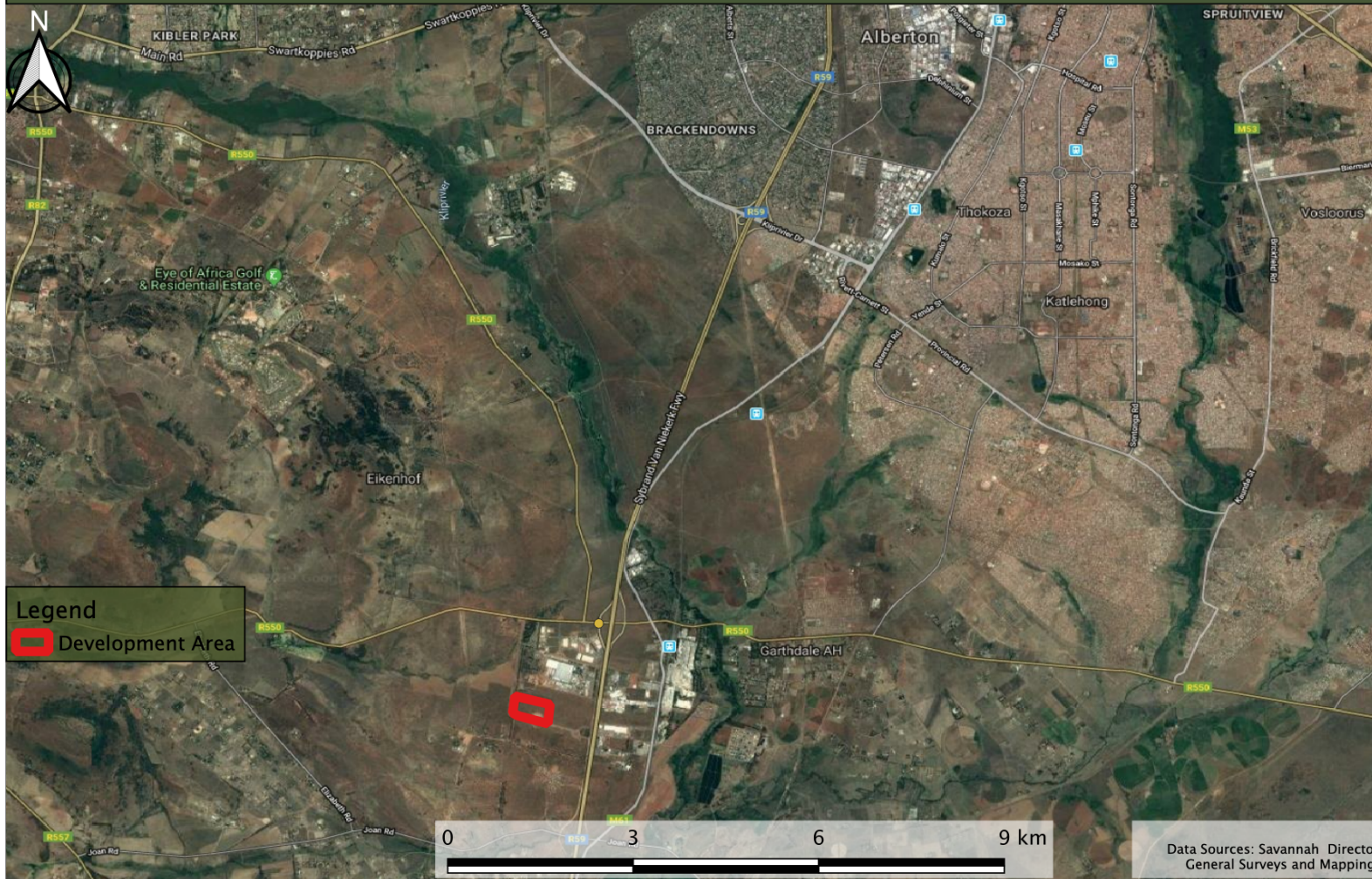


Figure 1 – Locality of study area



Figure 2 – PV development in relation to the industrial area



Figure 3 – Looking south east towards the truck parking area



Figure 4 – View of remaining area between the two waste rock dumps, take note how disturbed the corridor is



Figure 5 – The adjacent Heineken brewery no the north

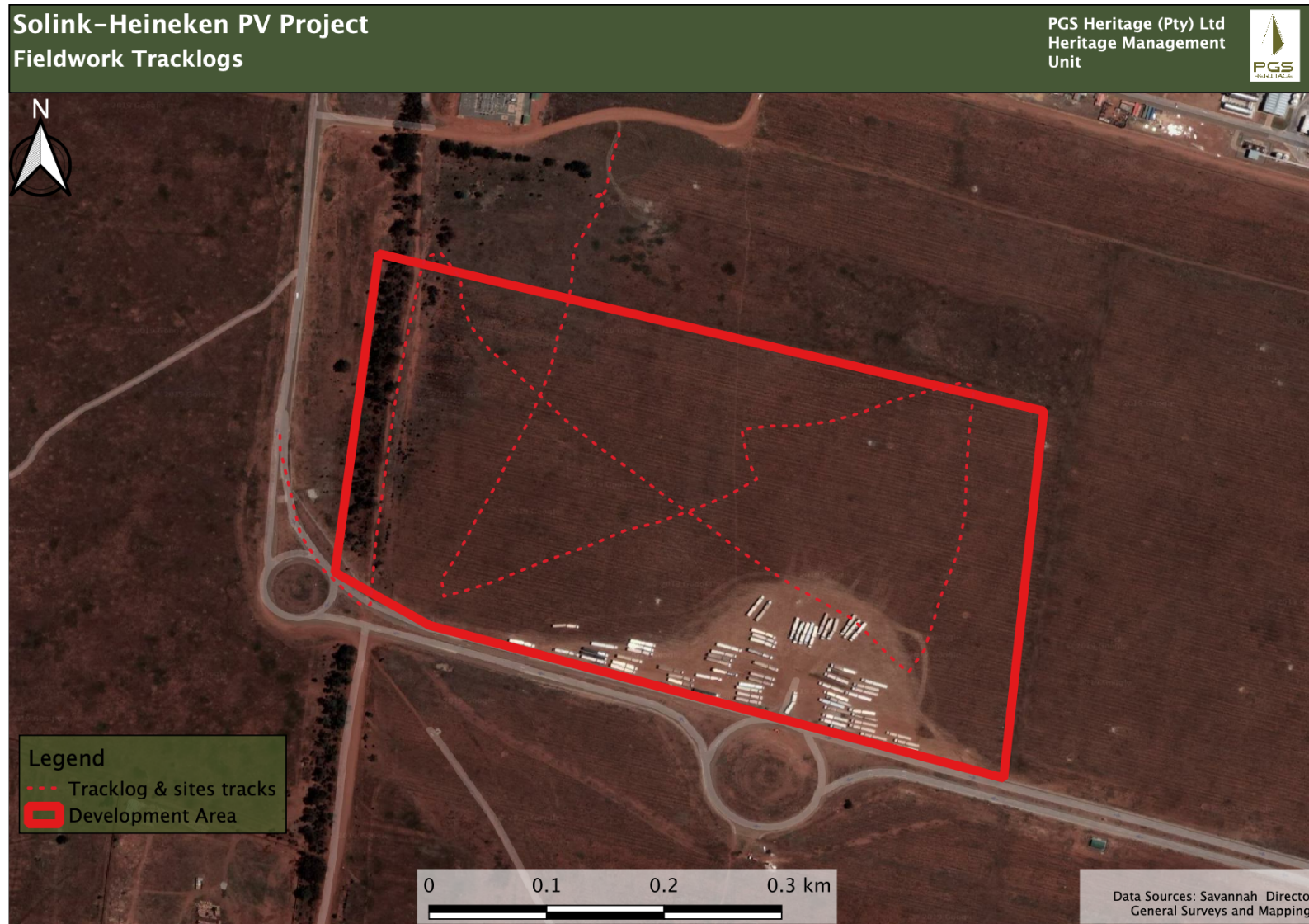


Figure 6 – PV development in relation to the industrial area

5 CONCLUSIONS AND RECOMMENDATIONS

With regard to the proposed process, the following recommendations are made:

- Although the development triggers the provision of s38(1) of the National Heritage Resources Act. It is our considered opinion that no further heritage impact assessment of the study area is required.
- A separate palaeontological desktop assessment is also submitted for evaluation.
- In the unlikely event of any unmarked human burials, burial pits, potsherds or stone tools being uncovered during earthworks for the proposed development, these must be reported immediately to the South African Heritage Resources Agency – Burials and Graves Unit (012 320 8490 / 4968).

Should you have any queries, please contact Ilan Smeyatsky (email: wouter@pgsheritage.com; Tel: (012) 332 5305).

Yours Sincerely



Wouter Fourie

Accredited Professional Archaeologist (ASAPA)

Accredited Professional Heritage Practitioner (APHP)

Director- PGS Heritage