



PGS HERITAGE

PALAEONTOLOGICAL DESKTOP ASSESSMENT FOR THE PROPOSED NKWE PLATINUM, GARATAU MINE IN STEELPOORT, LIMPOPO PROVINCE

Issue Date: 14 June 2021

Revision No.: v0.1

Client:

PGS Project No: 508HIA

**PGS
HERITAGE**



+27 (0) 12 332 5305



+27 (0) 86 675 8077



contact@pgsheritage.co.za



PO Box 32542, Totiusdal, 0134

Offices in South Africa, Kingdom of Lesotho and Mozambique

Head Office:
906 Bergarend Streets
Waverley, Pretoria,
South Africa

Directors: HS Steyn, PD Birkholtz, W Fourie

Declaration of Independence

I, Elize Butler, declare that –

General declaration:

- I act as the independent palaeontological specialist in this application.
- I will perform the work relating to the application in an objective manner, even if this results in views and findings that are not favorable to the applicant.
- I declare that there are no circumstances that may compromise my objectivity in performing such work.
- I have expertise in conducting palaeontological impact assessments, including knowledge of the Act, Regulations and any guidelines that have relevance to the proposed activity.
- I will comply with the Act, Regulations and all other applicable legislation.
- I will take into account, to the extent possible, the matters listed in section 38 of the NHRA when preparing the application and any report relating to the application.
- I have no, and will not engage in, conflicting interests in the undertaking of the activity.
- I undertake to disclose to the applicant and the competent authority all material information in my possession that reasonably has or may have the potential of influencing - any decision to be taken with respect to the application by the competent authority; and - the objectivity of any report, plan or document to be prepared by myself for submission to the competent authority.
- I will ensure that information containing all relevant facts in respect of the application is distributed or made available to interested and affected parties and the public and that participation by interested and affected parties is facilitated in such a manner that all interested and affected parties will be provided with a reasonable opportunity to participate and to provide comments on documents that are produced to support the application.
- I will provide the competent authority with access to all information at my disposal regarding the application, whether such information is favorable to the applicant or not
- All the particulars furnished by me in this form are true and correct.
- I will perform all other obligations as expected a palaeontological specialist in terms of the Act and the constitutions of my affiliated professional bodies; and
- I realize that a false declaration is an offense in terms of regulation 71 of the Regulations and is punishable in terms of section 24F of the NEMA.

Disclosure of Vested Interest

I do not have and will not have any vested interest (either business, financial, personal or other) in the proposed activity proceeding other than remuneration for work performed in terms of the Regulations;

PALAEONTOLOGICAL CONSULTANT:



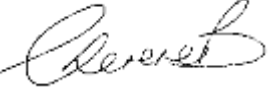
CONTACT PERSON:

Banzai Environmental (Pty) Ltd
Elize Butler
Tel: +27 844478759
Email: elizebutler002@gmail.com



SIGNATURE:

ACKNOWLEDGEMENT OF RECEIPT

Report Title	PALAEONTOLOGICAL DESKTOP ASSESSMENT FOR THE PROPOSED NKWE PLATINUM MINE IN STEELPOORT, LIMPOPO		
Control	Name	Signature	Designation
Author	Elize Butler		Palaeontologist
Reviewed	Wouter Fourie		Principal Heritage Specialist
Reviewed	Cherene de Bruyn		Archaeologist – PGS Heritage

CLIENT:

CONTACT PERSON:

SIGNATURE: _____

This PIA report has been compiled considering the National Environmental Management Act 1998 (NEMA) and Environmental Impact Regulations 2014 as amended, requirements for specialist reports, Appendix 6, as indicated in the table below.

Table 1 - NEMA Table

Requirements of Appendix 6 – GN R326 EIA Regulations of 7 April 2017	Relevant section in report	Comment where not applicable.
1.(1) (a) (i) Details of the specialist who prepared the report	Page ii and Section 2 of Report – Contact details and company and Appendix A	-
(ii) The expertise of that person to compile a specialist report including a curriculum vitae	Section 2 – refer to Appendix A	-
(b) A declaration that the person is independent in a form as may be specified by the competent authority	Page ii of the report	-
(c) An indication of the scope of, and the purpose for which, the report was prepared	Section 4 – Objective	-
(cA) An indication of the quality and age of base data used for the specialist report	Section 5 – Geological and Palaeontological history	-
(cB) a description of existing impacts on the site, cumulative impacts of the proposed development and levels of acceptable change;	Section 9	-
(d) The duration, date and season of the site investigation and the relevance of the season to the outcome of the assessment	Section 1 and 10	Desktop Study
(e) a description of the methodology adopted in preparing the report or carrying out the specialised process inclusive of equipment and modelling used	Section 7 Approach and Methodology	-
(f) details of an assessment of the specific identified sensitivity of the site related to the proposed activity or activities and its associated structures and infrastructure, inclusive of a site plan identifying site alternatives;	Section 1 and 10	
(g) An identification of any areas to be avoided, including buffers	Section 5	No buffers or areas of sensitivity identified
(h) A map superimposing the activity including the associated structures and infrastructure on the	Section 5 – Geological and Palaeontological history	

Requirements of Appendix 6 – GN R326 EIA Regulations of 7 April 2017	Relevant section in report	Comment where not applicable.
environmental sensitivities of the site including areas to be avoided, including buffers;		
(i) A description of any assumptions made and any uncertainties or gaps in knowledge;	Section 7.1 – Assumptions and Limitation	-
(j) A description of the findings and potential implications of such findings on the impact of the proposed activity, including identified alternatives, on the environment	Section 1 and 10	
(k) Any mitigation measures for inclusion in the EMPr	Section 11	
(l) Any conditions for inclusion in the environmental authorisation	Section 11	
(m) Any monitoring requirements for inclusion in the EMPr or environmental authorisation	Section 11	
(n)(i) A reasoned opinion as to whether the proposed activity, activities or portions thereof should be authorised and	Section 1 and 10	
(n)(iA) A reasoned opinion regarding the acceptability of the proposed activity or activities; and		
(n)(ii) If the opinion is that the proposed activity, activities or portions thereof should be authorised, any avoidance, management and mitigation measures that should be included in the EMPr, and where applicable, the closure plan	Section 1 and 10	-
(o) A description of any consultation process that was undertaken during the course of carrying out the study	N/A	Not applicable. A public consultation process will be conducted as part of the EIA and EMPr process.
(p) A summary and copies if any comments that were received during any consultation process	N/A	
(q) Any other information requested by the competent authority.	N/A	Not applicable.
(2) Where a government notice by the Minister provides for any protocol or minimum information requirement to be applied to a specialist report, the	Section 3 compliance with SAHRA guidelines	

Requirements of Appendix 6 – GN R326 EIA Regulations of 7 April 2017	Relevant section in report	Comment where not applicable.
requirements as indicated in such notice will apply.		

EXECUTIVE SUMMARY

Banzai Environmental was appointed by PGS Heritage (Pty) Ltd to conduct the Palaeontological Desktop Assessment (PDA) to assess the Nkwe Platinum Garatau Mine (Nkwe) in Steelpoort, Limpopo. To comply with the National Heritage Resources Act (No 25 of 1999, section 38) (NHRA), this PDA is necessary to confirm if fossil material could potentially be present in the planned mining area and to evaluate the impact of the proposed development on the Palaeontological Heritage.

Nkwe is underlain by Quaternary Superficial sediments as well as the Dsjate Subsuite (Rustenburg Layered Suite, Bushveld Complex). According to the South African Heritage Resources Information System (SAHRIS), the Palaeontological Sensitivity of the Bushveld Complex is Zero and that of the Quaternary sediments is low. A Very Low significance has been allocated to the development site. It is therefore considered that the proposed platinum mining development will not lead to detrimental impacts on the palaeontological resources of the area. Thus, the construction and operation of the mine may be authorised as the whole extent of the development footprint is not considered sensitive in terms of palaeontological resources.

However, if fossil remains or trace fossils are discovered during any phase of construction, either on the surface or exposed by excavations the **Chance Find Protocol** must be implemented by the Environmental Control Officer (ECO) in charge of these developments. These discoveries ought to be protected and the ECO must report to the South African Heritage Resources Agency (SAHRA) (Contact details: SAHRA, 111 Harrington Street, Cape Town. PO Box 4637, Cape Town 8000, South Africa. Tel: 021 462 4502. Fax: +27 (0)21 462 4509. Web: www.sahra.org.za) so that mitigation can be carried out by a palaeontologist.

It is consequently recommended that no further palaeontological heritage studies, ground-truthing and/or specialist mitigation are required pending the discovery of newly discovered fossils.

TABLE OF CONTENT

1	INTRODUCTION	1
2	QUALIFICATIONS AND EXPERIENCE OF THE AUTHOR.....	4
3	LEGISLATION.....	4
3.1	National Heritage Resources Act (25 of 1999)	4
4	OBJECTIVE	5
5	GEOLOGICAL AND PALAEOLOGICAL HISTORY	6
6	GEOGRAPHICAL LOCATION OF THE SITE	11
7	METHODS.....	11
7.1	Assumptions and Limitations	11
8	ADDITIONAL INFORMATION CONSULTED.....	11
9	IMPACT ASSESSMENT METHODOLOGY.....	12
9.1	Introduction	12
9.2	Significance Assessment	13
9.3	Spatial Scale	14
9.4	Duration Scale	14
9.5	Degree of Probability	15
9.6	Degree of Certainty	15
9.7	Quantitative Description of Impacts	16
9.8	Impact Assessment Table	18
9.9	SUMMARY OF IMPACT TABLES	18
10	FINDINGS AND RECOMMENDATIONS	18
	CHANCE FINDS PROTOCOL.....	20
10.1	Legislation	20
10.2	Background	20
10.3	Introduction	20
10.4	Chance Find Procedure	20
11	REFERENCES	22

List of Figures

<i>Figure 1 - Google Earth (2020) Image of the proposed Nkwe Platinum Mine in Steelpoort, Limpopo.....</i>	<i>2</i>
<i>Figure 2 - Location of the proposed Nkwe Platinum Mine in Steelpoort, Limpopo.....</i>	<i>3</i>
<i>Figure 3 - Extract of the 1: 250 000 2428 Nylstroom (1978) Geological Map and 2430 Pilgrims Rest Geological Map (1986) (Council for Geosciences, Pretoria). The development is underlain by the Quaternary Superficial deposits as well as the Rustenburg layered Suite (Bosveld Group).</i>	<i>8</i>
<i>Figure 4 - Extract of the 1 in 250 000 SAHRIS PalaeoMap map (Council of Geosciences) indicating the proposed development in graded colours.</i>	<i>10</i>

List of Tables

<i>Table 1 - NEMA Table.....</i>	<i>iv</i>
<i>Table 2 - Abbreviations</i>	<i>xi</i>
<i>Table 3 - SAHRIS Palaeosensitivity ratings table. The relevant sensitivities are highlighted .</i>	<i>10</i>
<i>Table 4 - Quantitative rating and equivalent descriptors for the impact assessment criteria ..</i>	<i>12</i>
<i>Table 5 - Description of the significance rating scale</i>	<i>13</i>
<i>Table 6 - Description of the significance rating scale</i>	<i>14</i>
<i>Table 7 - Description of the temporal rating scale.....</i>	<i>14</i>
<i>Table 8 - Description of the degree of probability of an impact occurring.</i>	<i>15</i>
<i>Table 9 - Description of the degree of certainty rating scale</i>	<i>15</i>
<i>Table 10 - Example of Rating Scale.....</i>	<i>16</i>
<i>Table 11 - Impact Risk Classes.....</i>	<i>16</i>
<i>Table 12 - Impact ratings for the proposed development.....</i>	<i>18</i>

Appendix A CV

TERMINOLOGY AND ABBREVIATIONS

Cultural significance

This means aesthetic, architectural, historical, scientific, social, spiritual, linguistic or technological value or significance.

Development

This means any physical intervention, excavation, or action, other than those caused by natural forces, which may in the opinion of the heritage authority in any way result in a change to the nature, appearance or physical nature of a place or influences its stability and future well-being, including:

- Construction, alteration, demolition, removal or change in use of a place or a structure at a place;
- Carrying out any works on or over or under a place;
- Subdivision or consolidation of land comprising a place, including the structures or airspace of a place;
- Constructing or putting up for display signs or boards;
- Any change to the natural or existing condition or topography of land; and
- Any removal or destruction of trees, or removal of vegetation or topsoil

Fossil

Mineralized bones of animals, shellfish, plants, and marine animals. A trace fossil is the track or footprint of a fossil animal that is preserved in stone or consolidated sediment.

Heritage

That which is inherited and forms part of the National Estate (historical places, objects, fossils as defined by the National Heritage Resources Act 25 of 1999).

Heritage resources

This means any place or object of cultural significance and can include (but not limited to) as stated under Section 3 of the NHRA,

- places, buildings, structures, and equipment of cultural significance;
- places to which oral traditions are attached or which are associated with living heritage;
- historical settlements and townscapes;
- landscapes and natural features of cultural significance;
- geological sites of scientific or cultural importance;
- archaeological and palaeontological sites;
- graves and burial grounds, and
- sites of significance relating to the history of slavery in South Africa;

Palaeontology

Any fossilised remains or fossil trace of animals or plants which lived in the geological past, other than fossil fuels or fossiliferous rock intended for industrial use, and any site which contains such fossilised remains or trace.

Table 2 - Abbreviations

Abbreviations	Description
ASAP	Association of South African Professional Archaeologists
CRM	Cultural Resource Management
DEFF	Department of Environmental Department of Environment, Forestry and Fisheries
ECO	Environmental Control Officer
EAP	Environmental Assessment Practitioner
EIA	Environmental Impact Assessment
ESA	Early Stone Age
GPS	Global Positioning System
HIA	Heritage Impact Assessment
I&AP	Interested & Affected Party
LSA	Late Stone Age
LIA	Late Iron Age
MSA	Middle Stone Age
MIA	Middle Iron Age
NECSA	Nuclear Energy Corporation of South Africa
NEMA	National Environmental Management Act
NHRA	National Heritage Resources Act
Nkwe	Nkwe Platinum Garatau Mine
PDA	Palaeontological Desktop Assessment
PIA	Palaeontological Impact Assessment
PHRA	Provincial Heritage Resources Authority
PSSA	Palaeontological Society of South Africa
SADC	Southern African Development Community
SAHRA	South African Heritage Resources Agency
SAHRIS	South African Heritage Resources Information System

1 INTRODUCTION

Nkwe Platinum (SA) (Pty) Limited (Nkwe) plans the construction and operation of an underground platinum mine (**Figure 1 - Figure 2**). The planned mine is located on the farms De Kom 252KT (De Kom), the Remaining Extent of Garatouw 282KT, Portion 1 of Garatouw 282KT (Garatouw), Hoepakrantz 291KT (Hoepakrantz) and Maandagshoek 254 KT, near Stellpoort in the Limpopo Province. The project comprises of the construction and operation of all the facilities linked to the underground abstraction and mineral extraction of Platinum Group Metals (PGMs and chrome).

The mine is a greenfields project and will mine resources in the UG2 and Marenski Reef. Access to the mine will be from a central shaft and ventilation complex next to a concentrator plant and Tailings Storage Facility (TSF) situated north of the complex. The complex and TSF are situated on low-lying flatlands.

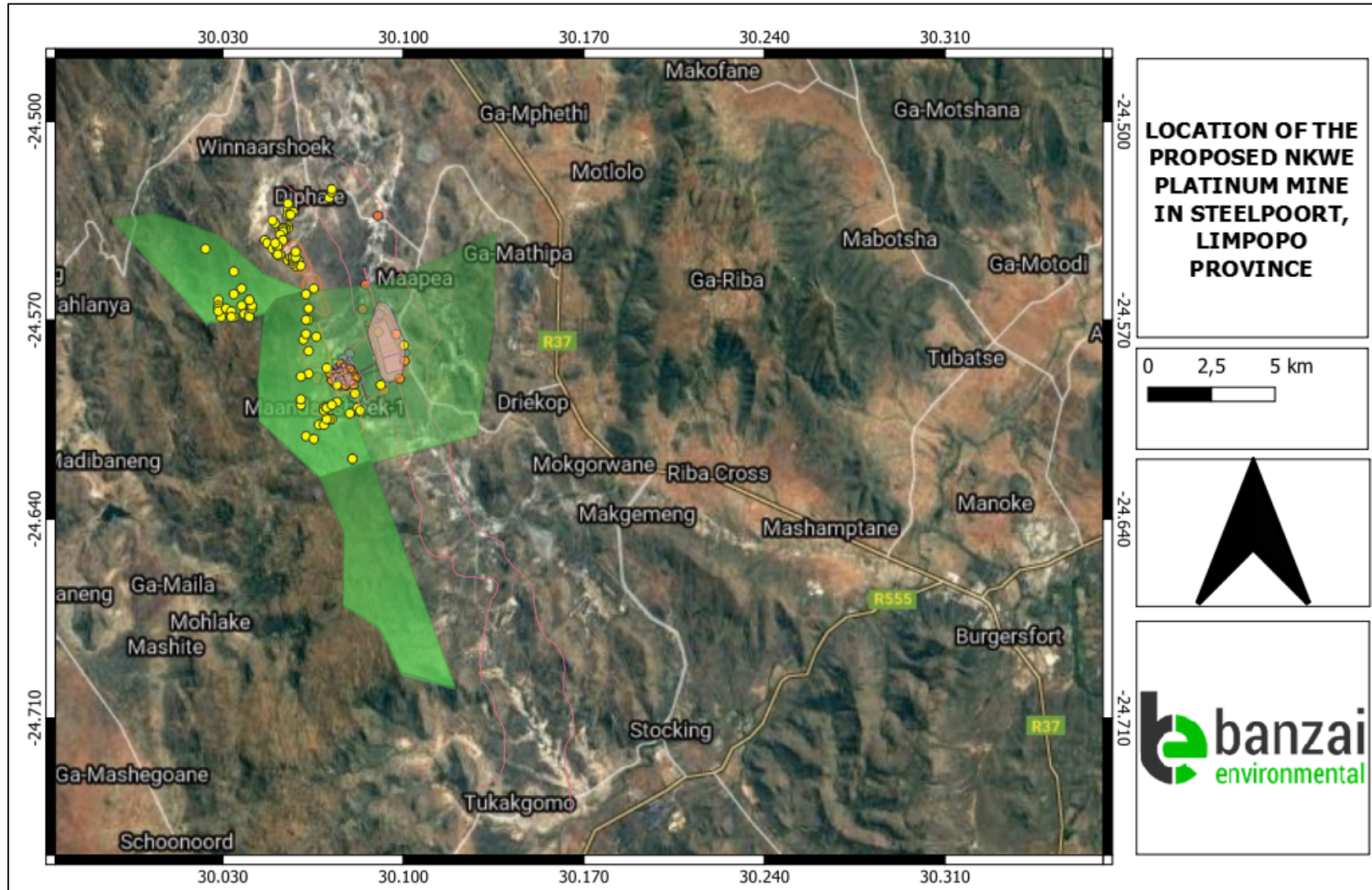


Figure 1 - Google Earth (2020) Image of the proposed Nkwe Platinum Mine in Steelport, Limpopo.

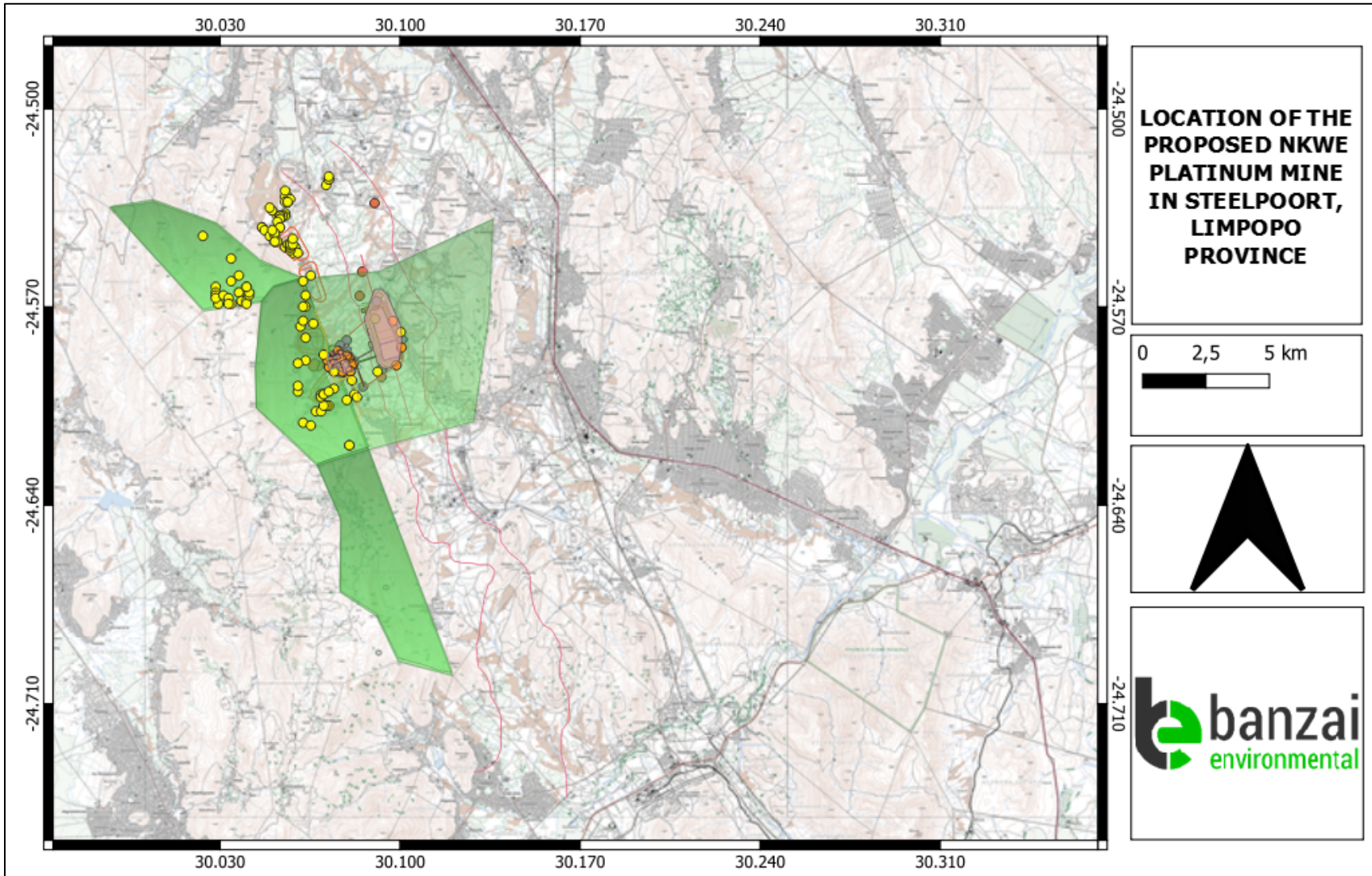


Figure 2 - Location of the proposed Nkwe Platinum Mine in Steelpoort, Limpopo.

2 QUALIFICATIONS AND EXPERIENCE OF THE AUTHOR

This present study has been conducted by Mrs Elize Butler. She has conducted approximately 300 PIAs for developments in the Free State, KwaZulu-Natal, Eastern, Central, and Northern Cape, Northwest, Gauteng, Limpopo, and Mpumalanga Provinces. She has an MSc (*cum laude*) in Zoology (specializing in Palaeontology) from the University of the Free State, South Africa and has been working in Palaeontology for more than twenty-five years. She has experience in locating, collecting and curating fossils, including exploration field trips in search of new localities in the Karoo Basin. She has been a member of the Palaeontological Society of South Africa (PSSA) since 2006 and has been conducting PIAs since 2014.

3 LEGISLATION

3.1 National Heritage Resources Act (25 of 1999)

Cultural Heritage in South Africa, includes all heritage resources, is protected by the National Heritage Resources Act (Act 25 of 1999) (NHRA). Heritage resources as defined in Section 3 of the Act include “**all objects recovered from the soil or waters of South Africa, including archaeological and palaeontological objects and material, meteorites and rare geological specimens**”.

Palaeontological heritage is exceptional and non-renewable and is protected by the NHRA. Palaeontological resources and may not be unearthed, broken moved, or destroyed by any development without prior assessment and without a permit from the relevant heritage resources authority as per section 35 of the NHRA.

This Palaeontological Impact assessment forms part of the Heritage Impact Assessment (HIA) and adhere to the conditions of the Act. According to **Section 38 (1)**, an HIA is required to assess any potential impacts to palaeontological heritage within the development footprint where:

- The construction of a road, wall, power line, pipeline, canal or other similar form of linear development or barrier exceeding 300 m in length;
- the construction of a bridge or similar structure exceeding 50 m in length;
- any development or other activity which will change the character of a site—
- (exceeding 5 000 m² in extent; or
- Involving three or more existing erven or subdivisions thereof; or

- Involving three or more erven or divisions thereof which have been consolidated within the past five years; or
- The costs of which will exceed a sum set in terms of regulations by sahra or a provincial heritage resources authority
- The re-zoning of a site exceeding 10 000 m² in extent; and
- Or any other category of development provided for in regulations by sahra or a provincial heritage resources authority.

4 OBJECTIVE

The aim of a PIA is to decrease the effect of the development on potential fossils at the development site.

According to the “SAHRA APM Guidelines: Minimum Standards for the Archaeological and Palaeontological Components of Impact Assessment Reports” the purpose of the PIA are: 1) to **identify** the palaeontological importance of the rock formations in the footprint; 2) to evaluate the palaeontological magnitude of the formations; 3) to determine the **impact** on fossil heritage; and 4) to **recommend** how the property developer should guard against and lessen damage to fossil heritage.

The terms of reference of a PIA are as follows:

General Requirements:

- Adherence to the content requirements for specialist reports in accordance with Appendix 6 of the EIA Regulations 2014, as amended.
- Adherence to all applicable best practice recommendations, appropriate legislation and authority requirements.
- Submit a comprehensive overview of all appropriate legislation, guidelines.
- Description of the proposed project and provide information regarding the developer and consultant who commissioned the study.
- Description and location of the proposed development and provide geological and topographical maps.
- Provide Palaeontological and geological history of the affected area.
- Identification sensitive areas to be avoided (providing shapefiles/kml's) in the proposed development.

- Evaluation of the significance of the planned development during the Pre-construction, Construction, Operation, Decommissioning Phases and Cumulative impacts. Potential impacts should be rated in terms of the direct, indirect and cumulative:
 - a. **Direct impacts** are impacts that are caused directly by the activity and generally occur at the same time and at the place of the activity.
 - b. **Indirect impacts** of an activity are indirect or induced changes that may occur as a result of the activity.
 - c. **Cumulative impacts** result from the incremental impact of the proposed activity on a common resource when added to the impacts of other past, present or reasonably foreseeable future activities.
- Fair assessment of alternatives (infrastructure alternatives have been provided):
- Recommend mitigation measures to minimise the impact of the proposed development; and

Implications of specialist findings for the proposed development (such as permits, licenses etc).

5 GEOLOGICAL AND PALAEOLOGICAL HISTORY

The proposed school development is depicted on the 1: 250 000 2428 Nylstroom (1978) Geological Map and 2430 Pilgrims Rest Geological Map (1986) (Council for Geosciences, Pretoria) (**Figure 3**). A small portion of the development is underlain by Quaternary Superficial sediments (alluvium and scree) while the rest of the development is underlain by the Dsjate Subsuite (Rustenburg Layered Suite, Bushveld Complex). According to the South African Heritage Resources Information System, the Palaeontological Sensitivity of the Bushveld Complex is Zero and that of the Quaternary sediments is low (**Figure 4**).

The Quaternary superficial deposits are the youngest geological deposits formed during the most recent geological period (approximately 2.6 million years ago to present). The rocks and sediments are found at or near the Earth's surface. Pre-Quaternary deposits are known as bedrock. Most of the superficial deposits are unconsolidated sediments and consist of clay, gravel, sand, silt, that form relatively thin, discontinuous patches of sediments or larger spreads onshore. These sediments comprise of beach sand, channel, floodplain and stream deposits, talus gravels and glacial drift sediments.

The Quaternary deposits reveal palaeoclimatic changes in the different geological formations (Hunter et al., 2006). The climatic fluctuations in the Cenozoic Era were responsible for the formation of most geomorphologic features in southern Africa (Maud, 2012). Various warming and

cooling events occurred in the Cenozoic but climatic changes during the Quaternary, specifically the last 1.8 Ma, were the most drastic relative to all climate variations in the past (Barnosky, 2005). The climate in the Quaternary was drier and wetter than the present and resulted in changes in river flow patterns, sedimentation processes and vegetation variation (Tooth et al., 2004).

Quaternary fossil assemblages are generally rare and low in diversity and occur over a wide-ranging geographic area. These fossil assemblages may in some cases occur in extensive alluvial and colluvial deposits cut by dongas. In the past palaeontologists did not focus on Cenozoic deposits although they sometimes comprise of significant fossil deposits. These fossil assemblages resemble modern animals and may comprise of mammalian teeth, bones and horn cores, reptile skeletons and fragments of ostrich eggs. Microfossils, non-marine mollusc shells are also known from the Quaternary. Plant material such as foliage, wood, pollens and peats are recovered as well as trace fossils like vertebrate tracks, burrows, termitaria and rhizoliths.

South Africa produces more than half of the world's yearly production of chromium, platinum, vanadium and refractory minerals. These minerals formed because of an extraordinary body of igneous rocks, namely the Bushveld Complex. The Complex consists of three different groups of igneous rocks. The oldest is a series of volcanic rocks, followed by basaltic magma. The latter did not reach the surface but formed an enormous underground chamber of approximately 400 x 300 km across the Limpopo, Northwest and Mpumalanga Provinces that reached a maximum thickness of approximately 8 km. Lastly, magma intruded above the basaltic body and crystallized as granite. These three components is known as the Rooiberg Group, Rustenburg Layered Suite and Lebowa Granite Suite, which are known as the Bushveld Complex.

The proposed mining development is completely underlain by the Rustenburg Layered Suite of the Bushveld Igneous Complex. The Rustenburg Layered Suite is Vaalian in age (2,100 – 1,920 million years old) and consists of an igneous intrusion with anorthosite, hybrid gabbro, gabbro, diabase, epidiorite, pyroxenite, and norite rocks. These intrusive igneous rocks of the Rustenburg Layered Suite are completely unfossiliferous.

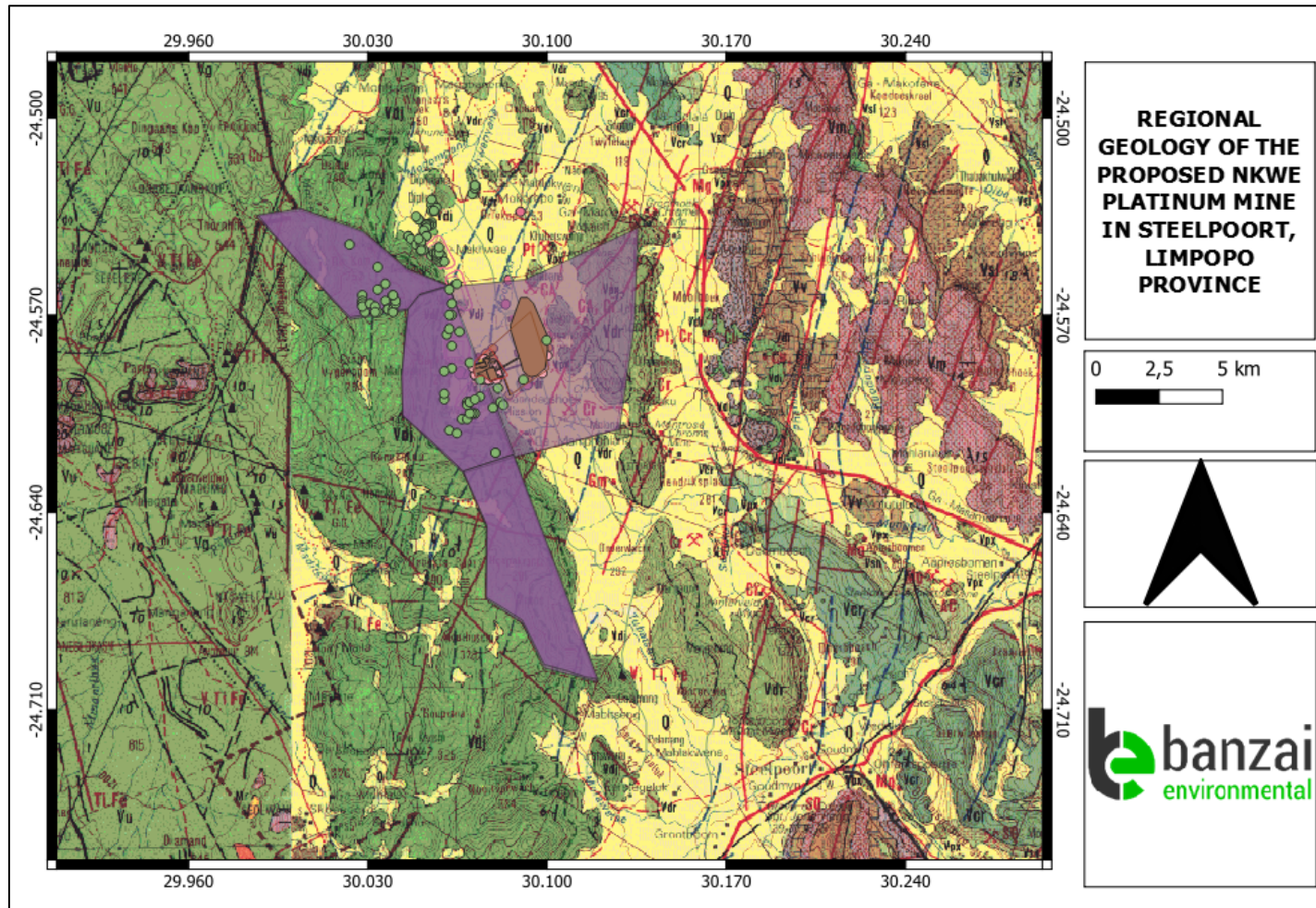
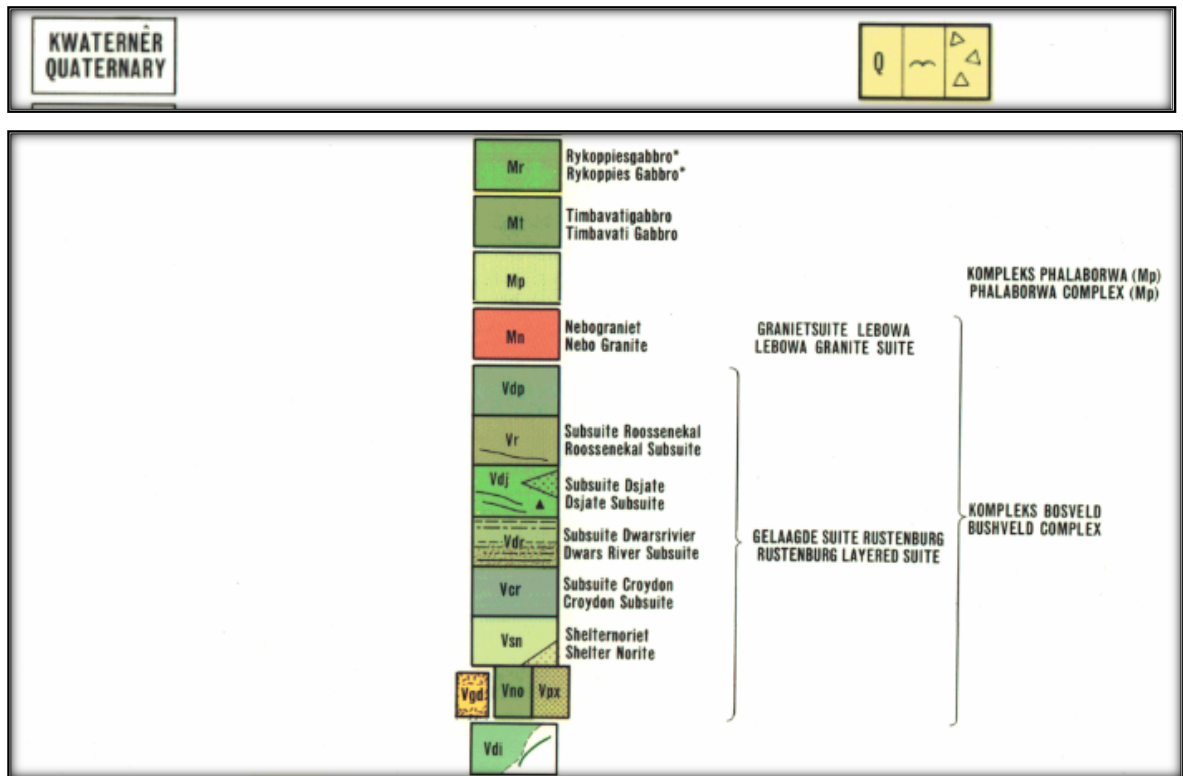


Figure 3 - Extract of the 1: 250 000 2428 Nylstroom (1978) Geological Map and 2430 Pilgrims Rest Geological Map (1986) (Council for Geosciences, Pretoria).
 The development is underlain by the Quaternary Superficial deposits as well as the Rustenburg layered Suite (Bosveld Group).

Legend



Q (yellow); Quaternary Superficial deposits; alluvium and scree

Vdj (bright green); Dsjate Subsuite, Rustenburg Layered Suite, Bushveld Complex; coarse grained gabbro and anorthosite,

Vdi (green); Diabase; fine and medium-grained green diabase

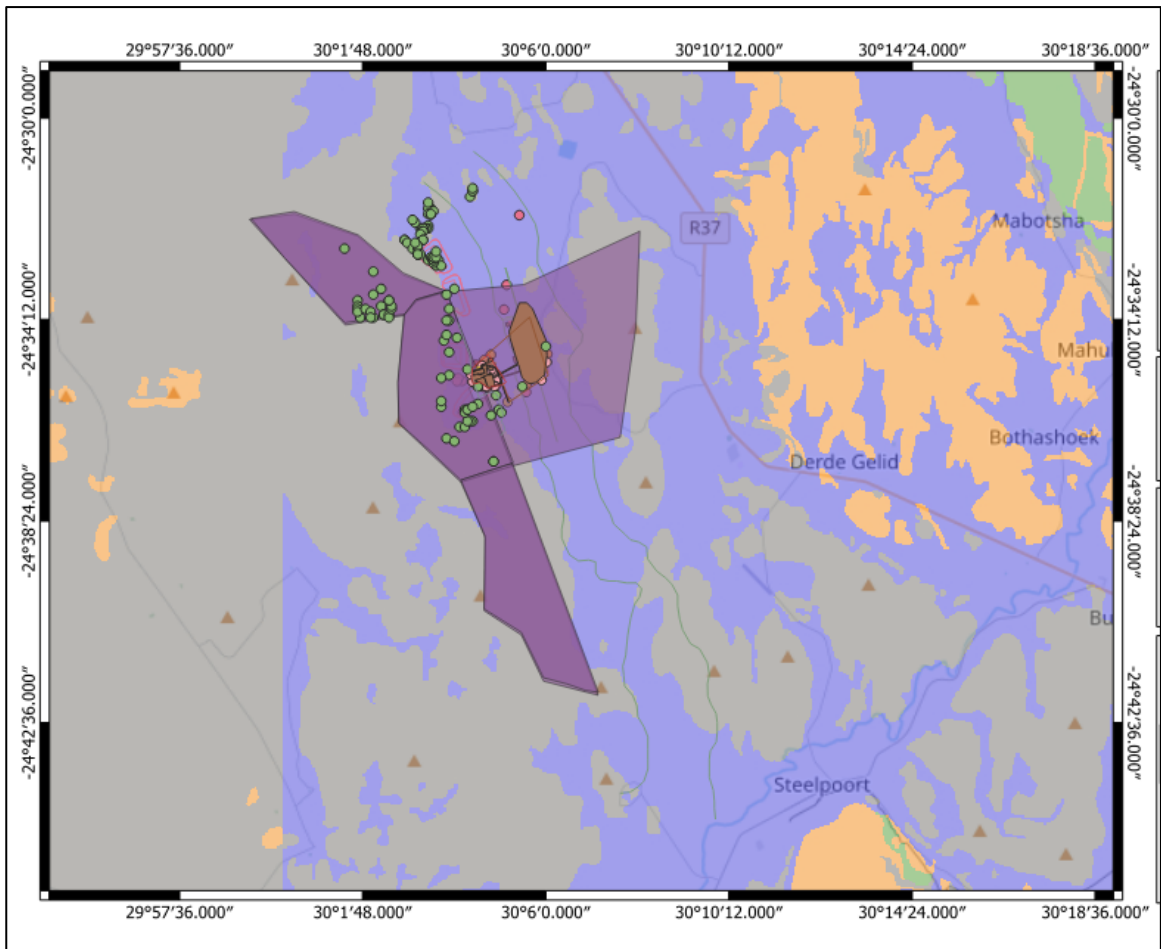


Figure 4 - Extract of the 1 in 250 000 SAHRIS PalaeoMap map (Council of Geosciences) indicating the proposed development in graded colours.

Table 3 - SAHRIS Palaeosensitivity ratings table. The relevant sensitivities are highlighted

Colour	Sensitivity	Required Action
RED	VERY HIGH	Field assessment and protocol for finds is required
ORANGE/YELLOW	HIGH	Desktop study is required and based on the outcome of the desktop study; a field assessment is likely
GREEN	MODERATE	Desktop study is required
BLUE	LOW	No palaeontological studies are required however a protocol for finds is required
GREY	INSIGNIFICANT/ZERO	No palaeontological studies are required
WHITE/CLEAR	UNKNOWN	These areas will require a minimum of a desktop study. As more information comes to light, sahra will continue to populate the map.

According to the SAHRIS Palaeo Sensitivity map (**Figure 4**) there is a Low chance of finding fossils in the blue area and a zero chance of finding fossils in the grey area.

6 GEOGRAPHICAL LOCATION OF THE SITE

The proposed development is located on on the farms De Kom 252KT (De Kom), the Remaining Extent of Garatouw 282KT, Portion 1 of Garatouw 282KT (Garatouw), Hoepakrantz 291KT (Hoepakrantz) and Maandagshoek 254 KT near Steelpoort in the Limpopo Province.

7 METHODS

The aim of a desktop study is to evaluate the risk to palaeontological heritage in the proposed development. This includes all trace fossils and fossils. All available information is consulted to compile a desktop study and includes: PIA reports in the same area; aerial photos and Google Earth images, topographical as well as geological maps.

7.1 Assumptions and Limitations

When conducting a PIA several factors can affect the accuracy of the assessment. The focal point of geological maps is the geology of the area and the sheet explanations were not meant to focus on palaeontological heritage. Many inaccessible regions of South Africa have not been reviewed by palaeontologists and data is generally based on aerial photographs. Locality and geological information of museums and universities databases have not been kept up to date or data collected in the past have not always been accurately documented.

Comparable Assemblage Zones in other areas is used to provide information on the existence of fossils in an area that was not yet been documented. When similar Assemblage Zones and geological formations for Desktop studies is used it is generally **assumed** that exposed fossil heritage is present within the footprint.

8 ADDITIONAL INFORMATION CONSULTED

In compiling this report the following sources were consulted:

- Geological map 1:100 000, Geology of the Republic of South Africa (Visser 1984);
 - 1: 250 000 2428 Nylstroom (1978) Geological Map (Council for Geosciences, Pretoria);
 - 1: 250 000 2430 Pilgrims Rest Geological Map (1986) (Council for Geosciences, Pretoria);
- and

- A Google Earth map with polygons of the proposed development was obtained from PGS Consultants.

9 IMPACT ASSESSMENT METHODOLOGY

9.1 Introduction

PLEASE NOTE:

The impact significance rating process serves two purposes: firstly, it helps to highlight the critical impacts requiring consideration in the management and approval process; secondly, it shows the primary impact characteristics, as defined above, used to evaluate impact significance.

The impacts will be ranked according to the methodology described below. Where possible, mitigation measures will be provided to manage impacts. In order to ensure uniformity, a standard impact assessment methodology will be utilised so that a wide range of impacts can be compared with each other. The impact assessment methodology makes provision for the assessment of impacts against the following criteria:

- Significance;
- Spatial scale;
- Temporal scale;
- Probability; and
- Degree of certainty.

A combined quantitative and qualitative methodology was used to describe impacts for each of the assessment criteria. A summary of each of the qualitative descriptors along with the equivalent quantitative rating scale for each of the aforementioned criteria is given in **Table 4**.

Table 4 - Quantitative rating and equivalent descriptors for the impact assessment criteria

RATING	SIGNIFICANCE	EXTENT SCALE	TEMPORAL SCALE
1	VERY LOW	Proposed site	Incidental
2	LOW	Study area	Short-term
3	MODERATE	Local	Medium/High-term
4	HIGH	Regional / Provincial	Long-term
5	VERY HIGH	Global / National	Permanent

A more detailed description of each of the assessment criteria is given in the following sections.

9.2 Significance Assessment

Significance rating (importance) of the associated impacts embraces the notion of extent and magnitude but does not always clearly define these since their importance in the rating scale is very relative. For example, the magnitude (i.e. the size) of area affected by atmospheric pollution may be extremely large (1 000 km²) but the significance of this effect is dependent on the concentration or level of pollution. If the concentration is great, the significance of the impact would be HIGH or VERY HIGH, but if it is diluted it would be VERY LOW or LOW. Similarly, if 60 ha of a grassland type are destroyed the impact would be VERY HIGH if only 100 ha of that grassland type were known. The impact would be VERY LOW if the grassland type was common. A more detailed description of the impact significance rating scale is given below.

Table 5 - Description of the significance rating scale

RATING		DESCRIPTION
5	Very high	Of the highest order possible within the bounds of impacts which could occur. In the case of adverse impacts: there is no possible mitigation and/or remedial activity which could offset the impact. In the case of beneficial impacts, there is no real alternative to achieving this benefit.
4	High	Impact is of substantial order within the bounds of impacts, which could occur. In the case of adverse impacts: mitigation and/or remedial activity is feasible but difficult, expensive, time-consuming or some combination of these. In the case of beneficial impacts, other means of achieving this benefit are feasible but they are more difficult, expensive, time-consuming or some combination of these.
3	Moderate	Impact is real but not substantial in relation to other impacts, which might take effect within the bounds of those which could occur. In the case of adverse impacts: mitigation and/or remedial activity are both feasible and fairly easily possible. In the case of beneficial impacts: other means of achieving this benefit are about equal in time, cost, effort, etc.
2	Low	Impact is of a low order and therefore likely to have little real effect. In the case of adverse impacts: mitigation and/or remedial activity is either easily achieved or little will be required, or both. In the case of beneficial impacts, alternative means for achieving this benefit are likely to be easier, cheaper, more effective, less time consuming, or some combination of these.
1	Very low	Impact is negligible within the bounds of impacts which could occur. In the case of adverse impacts, almost no mitigation and/or remedial activity are needed, and any minor steps which might be needed are easy, cheap, and simple. In the case of beneficial impacts, alternative means are almost all

		likely to be better, in one or a number of ways, than this means of achieving the benefit. Three additional categories must also be used where relevant. They are in addition to the category represented on the scale, and if used, will replace the scale.
0	No impact	There is no impact at all - not even a very low impact on a party or system.

9.3 Spatial Scale

The spatial scale refers to the extent of the impact i.e. will the impact be felt at the local, regional, or global scale. The spatial assessment scale is described in more detail below.

Table 6 - Description of the significance rating scale

RATING		DESCRIPTION
5	Global/National	The maximum extent of any impact.
4	Regional/Provincial	The spatial scale is moderate within the bounds of impacts possible and will be felt at a regional scale (District Municipality to Provincial Level).
3	Local	The impact will affect an area up to 10 km from the proposed site.
2	Study Site	The impact will affect an area not exceeding the Eskom property.
1	Proposed site	The impact will affect an area no bigger than the ash disposal site.

9.4 Duration Scale

In order to accurately describe the impact, it is necessary to understand the duration and persistence of an impact in the environment. The temporal scale is rated according to criteria set out in **Table 7**.

Table 7 - Description of the temporal rating scale

RATING		DESCRIPTION
1	Incidental	The impact will be limited to isolated incidences that are expected to occur very sporadically.
2	Short-term	The environmental impact identified will operate for the duration of the construction phase or a period of less than 5 years, whichever is the greater.

3	Medium/High term	The environmental impact identified will operate for the duration of life of facility.
4	Long term	The environmental impact identified will operate beyond the life of operation.
5	Permanent	The environmental impact will be permanent.

9.5 Degree of Probability

Probability or likelihood of an impact occurring will be described as shown in **Table 8** below.

Table 8 - Description of the degree of probability of an impact occurring.

RATING	DESCRIPTION
1	Practically impossible
2	Unlikely
3	Could happen
4	Very Likely
5	It's going to happen / has occurred

9.6 Degree of Certainty

As with all studies it is not possible to be 100% certain of all facts, and for this reason a standard “degree of certainty” scale is used as discussed in **Table 9**. The level of detail for specialist studies is determined according to the degree of certainty required for decision-making. The impacts are discussed in terms of affected parties or environmental components.

Table 9 - Description of the degree of certainty rating scale

RATING	DESCRIPTION
Definite	More than 90% sure of a particular fact.
Probable	Between 70 and 90% sure of a particular fact, or of the likelihood of that impact occurring.
Possible	Between 40 and 70% sure of a particular fact or of the likelihood of an impact occurring.
Unsure	Less than 40% sure of a particular fact or the likelihood of an impact occurring.

Can't know	The consultant believes an assessment is not possible even with additional research.
Don't know	The consultant cannot, or is unwilling, to make an assessment given available information.

9.7 Quantitative Description of Impacts

To allow for impacts to be described in a quantitative manner in addition to the qualitative description given above, a rating scale of between 1 and 5 was used for each of the assessment criteria. Thus, the total value of the impact is described as the function of significance, spatial and temporal scale as described below:

$$\text{Impact Risk} = \frac{(\text{SIGNIFICANCE (2)} + \text{Spatial (2)} + \text{Temporal(5)}) \times \text{Probability(1)}}{5}$$

An example of how this rating scale is applied is shown in **Table 10**.

Table 10 - Example of Rating Scale

IMPACT	IMPACT DIRECTION	SIGNIFICANCE	SPATIAL SCALE	TEMPORAL SCALE	PROBABILITY	RATING
	-	2	2	5	1	
Impact on Paleontological Heritage Resources	Negative	Low	Study site	Permanent	Practically impossible	0.6

Note: The significance, spatial and temporal scales are added to give a total of 9, that is divided by 3 to give a criteria rating of 3. The probability (1) is divided by 5 to give a probability rating of 0,2. The criteria rating of 3 is then multiplied by the probability rating (0,2) to give the final rating of 0.6.

The impact risk is classified according to five classes as described in the **Table 11** below.

Table 11 - Impact Risk Classes

RATING	IMPACT CLASS	DESCRIPTION
0.1 – 1.0	1	Very Low
1.1 – 2.0	2	Low
2.1 – 3.0	3	Moderate

3.1 – 4.0	4	High
4.1 – 5.0	5	Very High

Therefore, with reference to the example above, an impact rating of 0.6 will fall in the **Impact Class 1**, which will be considered to be a **Very Low Impact**.

9.8 Impact Assessment Table

Table 12 - Impact ratings for the proposed development

IMPACT	IMPACT DIRECTION	SIGNIFICANCE	SPATIAL SCALE	TEMPORAL SCALE	PROBABILITY	RATING
Impact on Paleontological Heritage Resources	Negative	Low	Study site	Permanent	Practically impossible	0.6

9.9 SUMMARY OF IMPACT TABLES

The development is underlain by Quaternary Superficial sediments as well as the Dsjate Subsuite (Rustenburg Layered Suite, Bushveld Complex). According to the SAHRIS, the Palaeontological Sensitivity of the Bushveld Complex is Zero and that of the Quaternary sediments is low. A very Low significance has been allocated to the development site. It is therefore considered that the proposed platinum mining development will not lead to detrimental impacts on the palaeontological resources of the area. Thus, the construction and operation of the mine may be authorised as the whole extent of the development footprint is not considered sensitive in terms of palaeontological resources.

The proposed development will have a **Very LOW** negative impact on Fossil Heritage. *Only the site will be affected by the proposed development.* The expected duration of the impact is assessed as potentially permanent to long term. The possibility that the impact could occur is **practically impossible**. The significance of the impact occurring will be **VERY LOW**. As fossil heritage will be destroyed the impact is irreversible.

10 FINDINGS AND RECOMMENDATIONS

The mining area is underlain by Quaternary Superficial sediments as well as the Dsjate Subsuite (Rustenburg Layered Suite, Bushveld Complex). According to the SAHRIS, the Palaeontological Sensitivity of the Bushveld Complex is Zero and that of the Quaternary sediments is low. A Very Low significance has been allocated to the development site. It is therefore considered that the proposed Platinum Mining Development will not lead to detrimental impacts on the palaeontological

resources of the area. Thus, the construction and operation of the mine may be authorised as the whole extent of the development footprint is not considered sensitive in terms of palaeontological resources.

However, if fossil remains or trace fossils are discovered during any phase of construction, either on the surface or exposed by excavations the **Chance Find Protocol** must be implemented by the ECO in charge of these developments. These discoveries ought to be protected and the ECO must report to SAHRA (Contact details: SAHRA, 111 Harrington Street, Cape Town. PO Box 4637, Cape Town 8000, South Africa. Tel: 021 462 4502. Fax: +27 (0)21 462 4509. Web: www.sahra.org.za) so that mitigation can be carried out by a palaeontologist.

It is consequently recommended that no further palaeontological heritage studies, ground-truthing and/or specialist mitigation are required pending the discovery of newly discovered fossils.

CHANCE FINDS PROTOCOL

The following procedure will only be followed if fossils are uncovered during excavation.

10.1 Legislation

Cultural Heritage in South Africa (includes all heritage resources) is protected by the **National Heritage Resources Act (Act 25 of 1999) (NHRA)**. According to Section 3 of the Act, all Heritage resources include “**all objects recovered from the soil or waters of South Africa, including archaeological and palaeontological objects and material, meteorites and rare geological specimens**”.

Palaeontological heritage is unique and non-renewable and is protected by the NHRA and are the property of the State. It is thus the responsibility of the State to manage and conserve fossils on behalf of the citizens of South Africa. Palaeontological resources may not be excavated, broken, moved, or destroyed by any development without prior assessment and without a permit from the relevant heritage resources authority as per section 35 of the NHRA.

10.2 Background

A fossil is the naturally preserved remains (or traces) of plants or animals embedded in rock. These plants and animals lived in the geologic past millions of years ago. Fossils are extremely rare and irreplaceable. By studying fossils, it is possible to determine the environmental conditions that existed in a specific geographical area millions of years ago.

10.3 Introduction

This informational document is intended for workmen and foremen on construction sites. It describes the actions to be taken when mining or construction activities accidentally uncover fossil material.

It is the responsibility of the Environmental Site Officer (ESO) or site manager of the project to train the workmen and foremen in the procedure to follow when a fossil is accidentally uncovered. In the absence of the ESO, a member of the staff must be appointed to be responsible for the proper implementation of the chance find protocol as not to compromise the conservation of fossil material.

10.4 Chance Find Procedure

- If a chance find is made the person responsible for the find must immediately **stop working** and all work that could impact that finding must cease in the immediate vicinity of the find.

- The person who made the find must immediately **report** the find to his/her direct supervisor which in turn must report the find to his/her manager and the ESO or site manager. The ESO or site manager must report the find to the relevant Heritage Agency (SAHRA). (Contact details: SAHRA, 111 Harrington Street, Cape Town. PO Box 4637, Cape Town 8000, South Africa. Tel: 021 462 4502. Fax: +27 (0)21 462 4509. Web: www.sahra.org.za). The information to the Heritage Agency must include photographs of the find, from various angles, as well as the GPS coordinates.
- A preliminary report must be submitted to the Heritage Agency within **24 hours** of the find and must include the following: 1) date of the find; 2) a description of the discovery and a 3) description of the fossil and its context (depth and position of the fossil), GPS coordinates.
- Photographs (the more the better) of the discovery must be of high quality, in focus, accompanied by a scale. It is also important to have photographs of the vertical section (side) where the fossil was found.

Upon receipt of the preliminary report, the Heritage Agency will inform the ECO (or site manager) whether a rescue excavation or rescue collection by a palaeontologist is necessary.

- The site must be secured to protect it from any further damage. **No attempt** should be made to remove material from their environment. The exposed finds must be stabilized and covered by a plastic sheet or sand bags. The Heritage agency will also be able to advise on the most suitable method of protection of the find.
- In the event that the fossil cannot be stabilized the fossil may be collected with extreme care by the ESO (site manager). Fossils finds must be stored in tissue paper and in an appropriate box while due care must be taken to remove all fossil material from the rescue site.
- Once Heritage Agency has issued the written authorization, the developer may continue with the development on the affected area.

11 REFERENCES

- ALMOND, J., PETHER, J, and GROENEWALD, G. 2013. South African National Fossil Sensitivity Map. SAHRA and Council for Geosciences.
- ALMOND, J.E. and PETHER, J. 2009. SAHRA Palaeotechnical Report: Palaeontological Heritage of the Northern Cape Province. South African Heritage Resources Agency, Pp 1-143.
- ALMOND, J., PETHER, J, and GROENEWALD, G. 2013. South African National Fossil Sensitivity Map. SAHRA and Council for Geosciences. Schweitzer *et al.* (1995) pp p288.
- BARNOSKY, A.D. 2005. Effects of Quaternary Climatic Change on Speciation in Mammals. *Journal of Mammalian Evolution*. 2005(12):247-264, June
- DU TOIT, A. 1954. The geology of South Africa. xii + 611pp, 41 pls. Oliver & Boyd, Edinburg.
- GROENEWALD, G. and GROENEWALD, D. 2014. SAHRA Palaeotechnical Report: Palaeontological Heritage of the Free State Province. South African Heritage Resources Agency, Pp 1-20.
- HUNTER, D.R., JOHNSON, M.R., ANHAEUSSER, C. R. AND THOMAS, R.J. 2006. Introduction. (*In: Johnson, M.R., Anhaeusser, C.R. and Thomas, R.J. (Eds), The Geology of South Africa*. Geological Society of South Africa, Johannesburg/Council for Geoscience, Pretoria, 585-604.)
- KENT, L. E., 1980. Part 1: Lithostratigraphy of the Republic of South Africa, South West Africa/Namibia and the Republics of Bophuthatswana, Transkei, and Venda. SACS, Council for Geosciences, Pp 535-574.
- MACRAE, C. 1999. Life etched in stone. Fossils of South Africa. 305 pp. The Geological Society of South Africa, Johannesburg.
- MAUD, R. 2012. Macroscale Geomorphic Evolution. (*In Holmes, P. and Meadows, M. Southern Africa Geomorphology, New trends and new directions*. Bloemfontein: Sun Press. p. 7- 21)
- PARTRIDGE, T.C., BOTHA, G.A. AND HADDON, I.G. 2006. Cenozoic Deposits of the Interior. (*In: Johnson, M.R., Anhaeusser, C.R. and Thomas, R.J. (Eds), The Geology of South Africa*. Geological Society of South Africa, Johannesburg/Council for Geoscience, Pretoria, 585-604.)
- SG 2.2 SAHRA APMHOB Guidelines, 2012. Minimum standards for palaeontological components of Heritage Impact Assessment Reports, Pp 1-15.
- TOOTH, S. BRANDT, D., HANCOX P.J. AND MCCARTHY, T. S. 2004. Geological controls on alluvial river behavior: a comparative study of three rivers in the South African Highveld. *Journal of African Earth Sciences*, 38(2004): 79-97, 15 Aug.
- VISSER, D.J.L. (ed) 1984. Geological Map of South Africa 1:100 000. South African Committee for Stratigraphy, Council for Geoscience, Pretoria.

VISSER, D.J.L. (ed) 1989. *Toeligting: Geologiese kaart (1:100 000). Die Geologie van die Republieke van Suid Afrika, Transkei, Bophuthatswana, Venda, Ciskei en die Koningkryke van Lesotho en Swaziland.* South African Committee for Stratigraphy. Council for Geoscience, Pretoria, Pp 494.

ELIZE BUTLER

PROFESSION: Palaeontologist
YEARS' EXPERIENCE: 26 years in Palaeontology

EDUCATION: B.Sc Botany and Zoology, 1988
University of the Orange Free State

B.Sc (Hons) Zoology, 1991
University of the Orange Free State

Management Course, 1991
University of the Orange Free State

M. Sc. *Cum laude* (Zoology), 2009
University of the Free State

Dissertation title: The postcranial skeleton of the Early Triassic non-mammalian Cynodont *Galesaurus planiceps*: implications for biology and lifestyle

MEMBERSHIP

Palaeontological Society of South Africa (PSSA) 2006-currently

EMPLOYMENT HISTORY

Part time Laboratory assistant	Department of Zoology & Entomology University of the Free State Zoology 1989-1992
Part time laboratory assistant	Department of Virology University of the Free State Zoology 1992
Research Assistant	National Museum, Bloemfontein 1993 – 1997
Principal Research Assistant	National Museum, Bloemfontein

and Collection Manager

1998–currently

TECHNICAL REPORTS

Butler, E. 2014. Palaeontological Impact Assessment of the proposed development of private dwellings on portion 5 of farm 304 Matjesfontein Keurboomstrand, Knysna District, Western Cape Province. Bloemfontein.

Butler, E. 2014. Palaeontological Impact Assessment for the proposed upgrade of existing water supply infrastructure at Noupoort, Northern Cape Province. 2014. Bloemfontein.

Butler, E. 2015. Palaeontological impact assessment of the proposed consolidation, re-division and development of 250 serviced erven in Nieu-Bethesda, Camdeboo local municipality, Eastern Cape. Bloemfontein.

Butler, E. 2015. Palaeontological impact assessment of the proposed mixed land developments at Rooikraal 454, Vrede, Free State. Bloemfontein.

Butler, E. 2015. Palaeontological exemption report of the proposed truck stop development at Palmiet 585, Vrede, Free State. Bloemfontein.

Butler, E. 2015. Palaeontological impact assessment of the proposed Orange Grove 3500 residential development, Buffalo City Metropolitan Municipality East London, Eastern Cape. Bloemfontein.

Butler, E. 2015. Palaeontological Impact Assessment of the proposed Gonubie residential development, Buffalo City Metropolitan Municipality East London, Eastern Cape Province. Bloemfontein.

Butler, E. 2015. Palaeontological Impact Assessment of the proposed Ficksburg raw water pipeline. Bloemfontein.

Butler, E. 2015. Palaeontological Heritage Impact Assessment report on the establishment of the 65 mw Majuba Solar Photovoltaic facility and associated infrastructure on portion 1, 2 and 6 of the farm Witkoppies 81 HS, Mpumalanga Province. Bloemfontein.

Butler, E. 2015. Palaeontological Impact Assessment of the proposed township establishment on the remainder of portion 6 and 7 of the farm Sunnyside 2620, Bloemfontein, Mangaung metropolitan municipality, Free State, Bloemfontein.

Butler, E. 2015. Palaeontological Impact Assessment of the proposed Woodhouse 1 photovoltaic solar energy facilities and associated infrastructure on the farm Woodhouse729, near Vryburg, North West Province. Bloemfontein.

Butler, E. 2015. Palaeontological Impact Assessment of the proposed Woodhouse 2 photovoltaic solar energy facilities and associated infrastructure on the farm Woodhouse 729, near Vryburg, North West Province. Bloemfontein.

Butler, E. 2015. Palaeontological Impact Assessment of the proposed Orkney solar energy farm and associated infrastructure on the remaining extent of Portions 7 and 21 of the farm Wolvehuis 114, near Orkney, North West Province. Bloemfontein.

Butler, E. 2015. Palaeontological Impact Assessment of the proposed Spectra foods broiler houses and abattoir on the farm Maiden Manor 170 and Ashby Manor 171, Lukhanji Municipality, Queenstown, Eastern Cape Province. Bloemfontein.

Butler, E. 2016. Palaeontological Impact Assessment of the proposed construction of the 150 MW Noupoot concentrated solar power facility and associated infrastructure on portion 1 and 4 of the farm Carolus Poort 167 and the remainder of Farm 207, near Noupoot, Northern Cape. Prepared for Savannah Environmental. Bloemfontein.

Butler, E. 2016. Palaeontological Impact Assessment of the proposed Woodhouse 1 Photovoltaic Solar Energy facility and associated infrastructure on the farm Woodhouse 729, near Vryburg, North West Province. Bloemfontein.

Butler, E. 2016. Palaeontological Impact Assessment of the proposed Woodhouse 2 Photovoltaic Solar Energy facility and associated infrastructure on the farm Woodhouse 729, near Vryburg, North West Province. Bloemfontein.

Butler, E. 2016. Proposed 132kV overhead power line and switchyard station for the authorised Solis Power 1 CSP project near Upington, Northern Cape. Bloemfontein.

Butler, E. 2016. Palaeontological Impact Assessment of of the proposed Senqu Pedestrian Bridges in Ward 5 of Senqu Local Municipality, Eastern Cape Province. Bloemfontein.

Butler, E. 2016. Recommendation from further Palaeontological Studies: Proposed Construction of the Modderfontein Filling Station on Erf 28 Portion 30, Founders Hill, City Of Johannesburg, Gauteng Province. Bloemfontein.

Butler, E. 2016. Recommendation from further Palaeontological Studies: Proposed Construction of the Modikwa Filling Station on a Portion of Portion 2 of Mooihoek 255 Kt, Greater Tubatse Local Municipality, Limpopo Province. Bloemfontein.

Butler, E. 2016. Recommendation from further Palaeontological Studies: Proposed Construction of the Heidedal filling station on Erf 16603, Heidedal Extension 24, Mangaung Local Municipality, Bloemfontein, Free State Province. Bloemfontein.

Butler, E. 2016. Recommended Exemption from further Palaeontological studies: Proposed Construction of the Gunstfontein Switching Station, 132kv Overhead Power Line (Single Or Double Circuit) and ancillary infrastructure for the Gunstfontein Wind Farm Near Sutherland, Northern Cape Province. Savannah South Africa. Bloemfontein.

Butler, E. 2016. Palaeontological Impact Assessment of the proposed Galla Hills Quarry on the remainder of the farm Roode Krantz 203, in the Lukhanji Municipality, division of Queenstown, Eastern Cape Province. Bloemfontein.

Butler, E. 2016. Chris Hani District Municipality Cluster 9 water backlog project phases 3a and 3b: Palaeontology inspection at Tsomo WTW. Bloemfontein.

Butler, E. 2016. Palaeontological Impact Assessment of the proposed construction of the 150 MW Noupoot concentrated solar power facility and associated infrastructure on portion 1 and 4 of the farm Carolus Poort 167 and the remainder of Farm 207, near Noupoot, Northern Cape. Savannah South Africa. Bloemfontein.

Butler, E. 2016. Palaeontological Impact Assessment of the proposed upgrading of the main road MR450 (R335) from the Motherwell to Addo within the Nelson Mandela Bay Municipality and Sunday's river valley Local Municipality, Eastern Cape Province. Bloemfontein.

Butler, E. 2016. Palaeontological Impact Assessment construction of the proposed Metals Industrial Cluster and associated infrastructure near Kuruman, Northern Cape Province. Savannah South Africa. Bloemfontein.

Butler, E. 2016. Palaeontological Impact Assessment for the proposed construction of up to a 132kv power line and associated infrastructure for the proposed Kalkaar Solar Thermal Power Plant near Kimberley, Free State and Northern Cape Provinces. PGS Heritage. Bloemfontein.

Butler, E. 2016. Palaeontological Impact Assessment of the proposed development of two burrow pits (DR02625 and DR02614) in the Enoch Mgijima Municipality, Chris Hani District, Eastern Cape.

Butler, E. 2016. Ezibeleni waste Buy-Back Centre (near Queenstown), Enoch Mgijima Local Municipality, Eastern Cape. Bloemfontein.

Butler, E. 2016. Palaeontological Impact Assessment for the proposed construction of two 5 Mw Solar Photovoltaic Power Plants on Farm Wildebeestkuil 59 and Farm Leeuwbosch 44, Leeudoringstad, North West Province. Bloemfontein.

Butler, E. 2016. Palaeontological Impact Assessment for the proposed development of four Leeuwingberg Wind farms and basic assessments for the associated grid connection near Loeriesfontein, Northern Cape Province. Bloemfontein.

Butler, E. 2016. Palaeontological impact assessment for the proposed Aggeneys south prospecting right project, Northern Cape Province. Bloemfontein.

Butler, E. 2016. Palaeontological impact assessment of the proposed Motuoane Ladysmith Exploration right application, Kwazulu Natal. Bloemfontein.

Butler, E. 2016. Palaeontological impact assessment for the proposed construction of two 5 MW solar photovoltaic power plants on farm Wildebeestkuil 59 and farm Leeuwbosch 44, Leeudoringstad, North West Province. Bloemfontein.

Butler, E. 2016: Palaeontological desktop assessment of the establishment of the proposed residential and mixed use development on the remainder of portion 7 and portion 898 of the farm Knopjeslaagte 385 Ir, located near Centurion within the Tshwane Metropolitan Municipality of Gauteng Province. Bloemfontein.

Butler, E. 2017. Palaeontological impact assessment for the proposed development of a new cemetery, near Kathu, Gamagara local municipality and John Taolo Gaetsewe district municipality, Northern Cape. Bloemfontein.

Butler, E. 2017. Palaeontological Impact Assessment Of The Proposed Development Of The New Open Cast Mining Operations On The Remaining Portions Of 6, 7, 8 And 10 Of The Farm Kwaggafontein 8 In The Carolina Magisterial District, Mpumalanga Province. Bloemfontein.

Butler, E. 2017. Palaeontological Desktop Assessment for the Proposed Development of a Wastewater Treatment Works at Lanseria, Gauteng Province. Bloemfontein.

Butler, E. 2017. Palaeontological Scoping Report for the Proposed Construction of a Warehouse and Associated Infrastructure at Perseverance in Port Elizabeth, Eastern Cape Province.

Butler, E. 2017. Palaeontological Desktop Assessment for the Proposed Establishment of a Diesel Farm and a Haul Road for the Tshipi Borwa mine Near Hotazel, In the John Taolo Gaetsewe District Municipality in the Northern Cape Province. Bloemfontein.

Butler, E. 2017. Palaeontological Desktop Assessment for the Proposed Changes to Operations at the UMK Mine near Hotazel, In the John Taolo Gaetsewe District Municipality in the Northern Cape Province. Bloemfontein.

Butler, E. 2017. Palaeontological Impact Assessment for the Development of the Proposed Ventersburg Project-An Underground Mining Operation near Ventersburg and Henneman, Free State Province. Bloemfontein.

Butler, E. 2017. Palaeontological desktop assessment of the proposed development of a 3000 MW combined cycle gas turbine (CCGT) in Richards Bay, Kwazulu-Natal. Bloemfontein.

Butler, E. 2017. Palaeontological Impact Assessment for the Development of the Proposed Revalidation of the lapsed General Plans for Elliotdale, Mbhashe Local Municipality. Bloemfontein.

Butler, E. 2017. Palaeontological assessment of the proposed development of a 3000 MW Combined Cycle Gas Turbine (CCGT) in Richards Bay, Kwazulu-Natal. Bloemfontein.

Butler, E. 2017. Palaeontological Impact Assessment of the proposed development of the new open cast mining operations on the remaining portions of 6, 7, 8 and 10 of the farm Kwaggafontein 8 10 in the Albert Luthuli Local Municipality, Gert Sibande District Municipality, Mpumalanga Province. Bloemfontein.

Butler, E. 2017. Palaeontological Impact Assessment of the proposed mining of the farm Zandvoort 10 in the Albert Luthuli Local Municipality, Gert Sibande District Municipality, Mpumalanga Province. Bloemfontein.

Butler, E. 2017. Palaeontological Desktop Assessment for the proposed Lanseria outfall sewer pipeline in Johannesburg, Gauteng Province. Bloemfontein.

Butler, E. 2017. Palaeontological Desktop Assessment of the proposed development of open pit mining at Pit 36W (New Pit) and 62E (Dishaba) Amandelbult Mine Complex, Thabazimbi, Limpopo Province. Bloemfontein.

Butler, E. 2017. Palaeontological impact assessment of the proposed development of the sport precinct and associated infrastructure at Merrifield Preparatory school and college, Amathole Municipality, East London. PGS Heritage. Bloemfontein.

Butler, E. 2017. Palaeontological impact assessment of the proposed construction of the Lehae training and fire station, Lenasia, Gauteng Province. Bloemfontein.

Butler, E. 2017. Palaeontological Desktop Assessment of the proposed development of the new open cast mining operations of the Impunzi mine in the Mpumalanga Province. Bloemfontein.

Butler, E. 2017. Palaeontological Desktop Assessment of the construction of the proposed Viljoenskroon Munic 132 KV line, Vierfontein substation and related projects. Bloemfontein.

Butler, E. 2017. Palaeontological Desktop Assessment of the proposed rehabilitation of 5 ownerless asbestos mines. Bloemfontein.

Butler, E. 2017. Palaeontological Desktop Assessment of the proposed development of the Lephale coal and power project, Lephale, Limpopo Province, Republic of South Africa. Bloemfontein.

Butler, E. 2017. Palaeontological Impact Assessment of the proposed construction of a 132KV powerline from the Tweespruit distribution substation (in the Mantsopa local municipality) to the Driedorp rural substation (within the Naledi local municipality), Free State province. Bloemfontein.

Butler, E. 2017. Palaeontological Desktop Assessment of the proposed development of the new coal-fired power plant and associated infrastructure near Makhado, Limpopo Province. Bloemfontein.

Butler, E. 2017. Palaeontological Impact Assessment of the proposed construction of a Photovoltaic Solar Power station near Collett substation, Middelburg, Eastern Cape. Bloemfontein.

Butler, E. 2017. Palaeontological Impact Assessment for the proposed township establishment of 2000 residential sites with supporting amenities on a portion of farm 826 in Botshabelo West, Mangaung Metro, Free State Province. Bloemfontein.

Butler, E. 2017. Palaeontological Desktop Assessment for the proposed prospecting right project without bulk sampling, in the Koa Valley, Northern Cape Province. Bloemfontein.

Butler, E. 2017. Palaeontological Desktop Assessment for the proposed Aroams prospecting right project, without bulk sampling, near Aggeneys, Northern Cape Province. Bloemfontein.

Butler, E. 2017. Palaeontological Impact Assessment of the proposed Belvior aggregate quarry II on portion 7 of the farm Maidenhead 169, Enoch Mgijima Municipality, division of Queenstown, Eastern Cape. Bloemfontein.

Butler, E. 2017. PIA site visit and report of the proposed Galla Hills Quarry on the remainder of the farm Roode Krantz 203, in the Lukhanji Municipality, division of Queenstown, Eastern Cape Province. Bloemfontein.

Butler, E. 2017. Palaeontological Impact Assessment of the proposed construction of Tina Falls Hydropower and associated power lines near Cumbu, Mthlontlo Local Municipality, Eastern Cape. Bloemfontein.

Butler, E. 2017. Palaeontological Desktop Assessment of the proposed construction of the Mangaung Gariep Water Augmentation Project. Bloemfontein.

Butler, E. 2017. Palaeontological Impact Assessment of the proposed Belvoir aggregate quarry II on portion 7 of the farm Maidenhead 169, Enoch Mgijima Municipality, division of Queenstown, Eastern Cape. Bloemfontein.

Butler, E. 2017. Palaeontological Impact Assessment of the proposed construction of the Melkspruit-Rouxville 132KV Power line. Bloemfontein.

Butler, E. 2017 Palaeontological Desktop Assessment of the proposed development of a railway siding on a portion of portion 41 of the farm Rustfontein 109 is, Govan Mbeki local municipality, Gert Sibande district municipality, Mpumalanga Province. Bloemfontein.

Butler, E. 2017. Palaeontological Impact Assessment of the proposed consolidation of the proposed Ilima Colliery in the Albert Luthuli local municipality, Gert Sibande District Municipality, Mpumalanga Province. Bloemfontein.

Butler, E. 2017. Palaeontological Desktop Assessment of the proposed extension of the Kareerand Tailings Storage Facility, associated borrow pits as well as a storm water drainage channel in the Vaal River near Stilfontein, North West Province. Bloemfontein.

Butler, E. 2017. Palaeontological Desktop Assessment of the proposed construction of a filling station and associated facilities on the Erf 6279, district municipality of John Taolo Gaetsewe District, Ga-Segonyana Local Municipality Northern Cape. Bloemfontein.

Butler, E. 2017. Palaeontological Desktop Assessment of the proposed of the Lephalale Coal and Power Project, Lephalale, Limpopo Province, Republic of South Africa. Bloemfontein.

Butler, E. 2017. Palaeontological Desktop Assessment of the proposed Overvaal Trust PV Facility, Buffelspoort, North West Province. Bloemfontein.

Butler, E. 2017. Palaeontological Impact Assessment of the proposed development of the H2 Energy Power Station and associated infrastructure on Portions 21; 22 And 23 of the farm Hartebeestspruit in the Thembisile Hani Local Municipality, Nkangala District near Kwamhlanga, Mpumalanga Province. Bloemfontein.

Butler, E. 2017. Palaeontological Impact Assessment of the proposed upgrade of the Sandriver Canal and Klippan Pump station in Welkom, Free State Province. Bloemfontein.

Butler, E. 2017. Palaeontological Impact Assessment of the proposed upgrade of the 132kv and 11kv power line into a dual circuit above ground power line feeding into the Urania substation in Welkom, Free State Province. Bloemfontein.

Butler, E. 2017. Palaeontological Desktop Assessment of the proposed Swaziland-Mozambique border patrol road and Mozambique barrier structure. Bloemfontein.

Butler, E. 2017. Palaeontological Impact Assessment of the proposed diamonds alluvial & diamonds general prospecting right application near Christiana on the remaining extent of portion 1 of the farm Kaffraria 314, registration division HO, North West Province. Bloemfontein.

Butler, E. 2017. Palaeontological Desktop Assessment for the proposed development of Wastewater Treatment Works on Hartebeesfontein, near Panbult, Mpumalanga. Bloemfontein.

Butler, E. 2017. Palaeontological Desktop Assessment for the proposed development of Wastewater Treatment Works on Rustplaas near Piet Retief, Mpumalanga. Bloemfontein.

Butler, E. 2018. Palaeontological Impact Assessment for the Proposed Landfill Site in Luckhoff, Letsemeng Local Municipality, Xhariep District, Free State. Bloemfontein.

Butler, E. 2018. Palaeontological Impact Assessment of the proposed development of the new Mutsho coal-fired power plant and associated infrastructure near Makhado, Limpopo Province. Bloemfontein.

Butler, E. 2018. Palaeontological Impact Assessment of the authorisation and amendment processes for Manangu mine near Delmas, Victor Khanye local municipality, Mpumalanga. Bloemfontein.

Butler, E. 2018. Palaeontological Desktop Assessment for the proposed Mashishing township establishment in Mashishing (Lydenburg), Mpumalanga Province. Bloemfontein.

Butler, E. 2018. Palaeontological Desktop Assessment for the Proposed Mlonzi Estate Development near Lusikisiki, Ngquza Hill Local Municipality, Eastern Cape. Bloemfontein.

Butler, E. 2018. Palaeontological Phase 1 Assessment of the proposed Swaziland-Mozambique border patrol road and Mozambique barrier structure. Bloemfontein.

Butler, E. 2018. Palaeontological Desktop Assessment for the proposed electricity expansion project and Sekgame Switching Station at the Sishen Mine, Northern Cape Province. Bloemfontein.

Butler, E. 2018. Palaeontological field assessment of the proposed construction of the Zonnebloem Switching Station (132/22kV) and two loop-in loop-out power lines (132kV) in the Mpumalanga Province. Bloemfontein.

Butler, E. 2018. Palaeontological Field Assessment for the proposed re-alignment and decommissioning of the Firham-Platrand 88kv Powerline, near Standerton, Lekwa Local Municipality, Mpumalanga province. Bloemfontein.

Butler, E. 2018. Palaeontological Desktop Assessment of the proposed Villa Rosa development In the Buffalo City Metropolitan Municipality, East London. Bloemfontein.

Butler, E. 2018. Palaeontological field Assessment of the proposed Villa Rosa development In the Buffalo City Metropolitan Municipality, East London. Bloemfontein.

Butler, E. 2018. Palaeontological desktop assessment of the proposed Mookodi – Mahikeng 400kV line, North West Province. Bloemfontein.

Butler, E. 2018. Palaeontological Desktop Assessment for the proposed Thornhill Housing Project, Ndlambe Municipality, Port Alfred, Eastern Cape Province. Bloemfontein.

Butler, E. 2018. Palaeontological desktop assessment of the proposed housing development on portion 237 of farm Hartebeestpoort 328. Bloemfontein.

Butler, E. 2018. Palaeontological desktop assessment of the proposed New Age Chicken layer facility located on holding 75 Endicott near Springs in Gauteng. Bloemfontein.

Butler, E. 2018 Palaeontological Desktop Assessment for the development of the proposed Leslie 1 Mining Project near Leandra, Mpumalanga Province. Bloemfontein.

Butler, E. 2018. Palaeontological field assessment of the proposed development of the Wildealskloof mixed use development near Bloemfontein, Free State Province. Bloemfontein.

Butler, E. 2018. Palaeontological Field Assessment of the proposed Megamor Extension, East London. Bloemfontein

Butler, E. 2018. Palaeontological Impact Assessment of the proposed diamonds Alluvial & Diamonds General Prospecting Right Application near Christiana on the Remaining Extent of Portion 1 of the Farm Kaffraria 314, Registration Division HO, North West Province. Bloemfontein.

Butler, E. 2018. Palaeontological Impact Assessment of the proposed construction of a new 11kV (1.3km) Power Line to supply electricity to a cell tower on farm 215 near Delportshoop in the Northern Cape. Bloemfontein.

Butler, E. 2018. Palaeontological Field Assessment of the proposed construction of a new 22 kV single wood pole structure power line to the proposed MTN tower, near Britstown, Northern Cape Province. Bloemfontein.

Butler, E. 2018. Palaeontological Exemption Letter for the proposed reclamation and reprocessing of the City Deep Dumps in Johannesburg, Gauteng Province. Bloemfontein.

Butler, E. 2018. Palaeontological Exemption letter for the proposed reclamation and reprocessing of the City Deep Dumps and Rooikraal Tailings Facility in Johannesburg, Gauteng Province. Bloemfontein.

Butler, E. 2018. Proposed Kalabasfontein Mine Extension project, near Bethal, Govan Mbeki District Municipality, Mpumalanga. Bloemfontein.

Butler, E. 2018. Palaeontological Desktop Assessment for the development of the proposed Leslie 1 Mining Project near Leandra, Mpumalanga Province. Bloemfontein.

Butler, E. 2018. Palaeontological Desktop Assessment of the proposed Mookodi – Mahikeng 400kV Line, North West Province. Bloemfontein.

Butler, E. 2018. Environmental Impact Assessment (EIA) for the Proposed 325mw Rondekop Wind Energy Facility between Matjiesfontein And Sutherland In The Northern Cape Province.

Butler, E. 2018. Palaeontological Impact Assessment of the proposed construction of the Tooverberg Wind Energy Facility, and associated grid connection near Touws River in the Western Cape Province. Bloemfontein.

Butler, E. 2018. Palaeontological impact assessment of the proposed Kalabasfontein Mining Right Application, near Bethal, Mpumalanga.

- E. Butler.** 2019. Palaeontological Desktop Assessment of the proposed Westrand Strengthening Project Phase II.
- E. Butler.** 2019. Palaeontological Field Assessment for the proposed Sirius 3 Photovoltaic Solar Energy Facility near Upington, Northern Cape Province
- E. Butler.** 2019. Palaeontological Field Assessment for the proposed Sirius 4 Photovoltaic Solar Energy Facility near Upington, Northern Cape Province
- E. Butler.** 2019. Palaeontological Field Assessment for Heuningspruit PV 1 Solar Energy Facility near Koppies, Ngwathe Local Municipality, Free State Province.
- E. Butler.** 2019. Palaeontological Field Assessment for the Moeding Solar Grid Connection, Northwest Province.
- E. Butler.** 2019. Recommended Exemption from further Palaeontological studies for the Proposed Agricultural Development on Farms 1763, 2372 And 2363, Kakamas South Settlement, Kai! Garib Municipality, Mgcau District Municipality, Northern Cape Province.
- E. Butler. 2019.** Recommended Exemption from further Palaeontological studies: of Proposed Agricultural Development, Plot 1178, Kakamas South Settlement, Kai! Garib Municipality
- E. Butler. 2019.** Palaeontological Desktop Assessment for the Proposed Waste Rock Dump Project at Tshipi Borwa Mine, near Hotazel, Northern Cape Province:
- E. Butler. 2019.** Palaeontological Exemption Letter for the proposed DMS Upgrade Project at the Sishen Mine, Gamagara Local Municipality, Northern Cape Province
- E. Butler. 2019.** Palaeontological Desktop Assessment of the proposed Integrated Environmental Authorisation process for the proposed Der Brochen Amendment project, near Groblershoop, Limpopo
- E. Butler. 2019.** Palaeontological Desktop Assessment of the proposed updated Environmental Management Programme (EMPr) for the Assmang (Pty) Ltd Black Rock Mining Operations, Hotazel, Northern Cape
- E. Butler. 2019.** Palaeontological Desktop Assessment of the proposed Kriel Power Station Lime Plant Upgrade, Mpumalanga Province
- E. Butler. 2019.** Palaeontological Impact Assessment for the proposed Kangala Extension Project Near Delmas, Mpumalanga Province.

E. Butler. 2019. Palaeontological Desktop Assessment for the proposed construction of an iron/steel smelter at the Botshabelo Industrial area within the Mangaung Metropolitan Municipality, Free State Province.

E. Butler. 2019. Recommended Exemption from further Palaeontological studies for the proposed agricultural development on farms 1763, 2372 and 2363, Kakamas South settlement, Kai! Garib Municipality, Mgcawu District Municipality, Northern Cape Province.

E. Butler. 2019. Recommended Exemption from further Palaeontological Studies for Proposed formalisation of Gamakor and Noodkamp low cost Housing Development, Keimoes, Gordonia Rd, Kai !Garib Local Municipality, ZF Mgcawu District Municipality, Northern Cape Province.

E. Butler. 2019. Recommended Exemption from further Palaeontological Studies for proposed formalisation of Blaauwskop Low Cost Housing Development, Kenhardt Road, Kai !Garib Local Municipality, ZF Mgcawu District Municipality, Northern Cape Province.

E. Butler. 2019. Palaeontological Desktop Assessment of the proposed mining permit application for the removal of diamonds alluvial and diamonds kimberlite near Windsorton on a certain portion of Farm Zoelen's Laagte 158, Registration Division: Barkly Wes, Northern Cape Province.

E. Butler. 2019. Palaeontological Desktop Assessment of the proposed Vedanta Housing Development, Pella Mission 39, Khâi-Ma Local Municipality, Namakwa District Municipality, Northern Cape.

E. Butler. 2019. Palaeontological Desktop Assessment for The Proposed 920 Kwp Groenheuwel Solar Plant Near Augrabies, Northern Cape Province

E. Butler. 2019. Palaeontological Desktop Assessment for the establishment of a Super Fines Storage Facility at Amandelbult Mine, Near Thabazimbi, Limpopo Province

E. Butler. 2019. Palaeontological Impact Assessment for the proposed Sace Lifex Project, Near Emalahleni, Mpumalanga Province

E. Butler. 2019. Palaeontological Desktop Assessment for the proposed Rehau Fort Jackson Warehouse Extension, East London

E. Butler. 2019. Palaeontological Desktop Assessment for the proposed Environmental Authorisation Amendment for moving 3 Km Of the Merensky-Kameni 132KV Powerline

E. Butler. 2019. Palaeontological Impact Assessment for the proposed Umsobomvu Solar PV Energy Facilities, Northern and Eastern Cape

- E. Butler. 2019.** Palaeontological Desktop Assessment for six proposed Black Mountain Mining Prospecting Right Applications, without Bulk Sampling, in the Northern Cape.
- E. Butler. 2019.** Palaeontological field Assessment of the Filling Station (Rietvlei Extension 6) on the Remaining Portion of Portion 1 of the Farm Witkoppies 393JR east of the Rietvleidam Nature Reserve, City of Tshwane, Gauteng
- E. Butler. 2019.** Palaeontological Desktop Assessment Of The Proposed Upgrade Of The Vaal Gamagara Regional Water Supply Scheme: Phase 2 And Groundwater Abstraction
- E. Butler. 2019.** Palaeontological Desktop Assessment Of The Expansion Of The Jan Kempdorp Cemetry On Portion 43 Of Farm Guldenskat 36-Hn, Northern Cape Province
- E. Butler. 2019.** Palaeontological Desktop Assessment of the Proposed Residential Development On Portion 42 Of Farm Geldunskat No 36 In Jan Kempdorp, Phokwane Local Municipality, Northern Cape Province
- E. Butler. 2019.** Palaeontological Impact Assessment of the proposed new Township Development, Lethabo Park, on Remainder of Farm Roodepan No 70, Erf 17725 And Erf 15089, Roodepan Kimberley, Sol Plaatjies Local Municipality, Frances Baard District Municipality, Northern Cape
- E. Butler. 2019.** Palaeontological Protocol for Finds for the proposed 16m WH Battery Storage System in Steinkopf, Northern Cape Province
- E. Butler. 2019.** Palaeontological Exemption Letter of the proposed 4.5WH Battery Storage System near Midway-Pofadder, Northern Cape Province
- E. Butler. 2019.** Palaeontological Exemption Letter of the proposed 2.5ml Process Water Reservoir at Gloria Mine, Black Rock, Hotazel, Northern Cape
- E. Butler. 2019.** Palaeontological Desktop Assessment for the Establishment of a Super Fines Storage Facility at Gloria Mine, Black Rock Mine Operations, Hotazel, Northern Cape:
- E. Butler. 2019.** Palaeontological Desktop Assessment for the Proposed New Railway Bridge, and Rail Line Between Hotazel And The Gloria Mine, Northern Cape Province
- E. Butler. 2019.** Palaeontological Exemption Letter Of The Proposed Mixed Use Commercial Development On Portion 17 Of Farm Boegoeberg Settlement Number 48, !Kheis Local Municipality In The Northern Cape Province

- E. Butler.** 2019. Palaeontological Desktop Assessment of the Proposed Diamond Mining Permit Application Near Kimberley, Sol Plaatjies Municipality, Northern Cape Province
- E. Butler.** 2019. Palaeontological Desktop Assessment of the Proposed Diamonds (Alluvial, General & In Kimberlite) Prospecting Right Application near Postmasburg, Registration Division; Hay, Northern Cape Province
- E. Butler.** 2019. Palaeontological Desktop Assessment of the proposed diamonds (alluvial, general & in kimberlite) prospecting right application near Kimberley, Northern Cape Province.
- E. Butler.** 2019. Palaeontological Phase 1 Impact Assessment of the proposed upgrade of the Vaal Gamagara regional water supply scheme: Phase 2 and groundwater abstraction
- E. Butler.** 2019. Palaeontological Desktop Assessment of the proposed seepage interception drains at Duvha Power Station, Emalahleni Municipality, Mpumalanga Province
- E. Butler.** 2019. Palaeontological Desktop Assessment letter for the Proposed PV Solar Facility at the Heineken Sedibeng Brewery, near Vereeniging, Gauteng.
- E. Butler.** 2019. Palaeontological Phase 1 Assessment letter for the Proposed PV Solar Facility at the Heineken Sedibeng Brewery, near Vereeniging, Gauteng.
- E. Butler.** 2019. Palaeontological field Assessment for the Proposed Upgrade of the Kolomela Mining Operations, Tsantsabane Local Municipality, Siyanda District Municipality, Northern Cape Province, Northern Cape
- E. Butler.** 2019. Palaeontological Desktop Assessment of the proposed feldspar prospecting rights and mining application on portion 4 and 5 of the farm Rozynen 104, Kakamas South, Kailash Garib Municipality, Zf Mgcawu District Municipality, Northern Cape
- E. Butler.** 2019. Palaeontological Phase 1 Field Assessment of the proposed Summerpride Residential Development and Associated Infrastructure on Erf 107, Buffalo City Municipality, East London.
- E. Butler.** 2019. Palaeontological Desktop Impact Assessment for the proposed re-commission of the Old Balgray Colliery near Dundee, Kwazulu Natal.
- E. Butler.** 2019. Palaeontological Phase 1 Impact Assessment for the Proposed Re-Commission of the Old Balgray Colliery near Dundee, Kwazulu Natal.
- E. Butler.** 2019. Palaeontological Desktop Assessment for the Proposed Environmental Authorisation and Amendment Processes for Elandsfontein Colliery.

- E. Butler.** 2019. Palaeontological Impact Assessment and Protocol for Finds of a Proposed New Quarry on Portion 9 (of 6) of the farm Mimosa Glen 885, Bloemfontein, Free State Province
- E. Butler.** 2019. Palaeontological Impact Assessment and Protocol for Finds of a proposed development on Portion 9 and 10 of the Farm Mimosa Glen 885, Bloemfontein, Free State Province
- E. Butler.** 2019. Palaeontological Exemption Letter for the proposed residential development on the Remainder of Portion 1 of the Farm Strathearn 2154 in the Magisterial District of Bloemfontein, Free State
- E. Butler.** 2019. Palaeontological Field Assessment for the Proposed Nigel Gas Transmission Pipeline Project in the Nigel Area of the Ekurhuleni Metropolitan Municipality, Gauteng Province
- E. Butler.** 2019. Palaeontological Desktop Assessment for five Proposed Black Mountain Mining Prospecting Right Applications, Without Bulk Sampling, in the Northern Cape.
- E. Butler.** 2019. Palaeontological Desktop Assessment for the Proposed Environmental Authorisation and an Integrated Water Use Licence Application for the Reclamation of the Marievale Tailings Storage Facilities, Ekurhuleni Metropolitan Municipality - Gauteng Province.
- E. Butler.** 2019. Palaeontological Impact Assessment for the Proposed Sace Lifex Project, near Emalahleni, Mpumalanga Province.
- E. Butler.** 2019. Palaeontological Desktop Assessment for the proposed Golfview Colliery near Ermelo, Msukaligwa Local Municipality, Mpumalanga Province
- E. Butler.** 2019. Palaeontological Desktop Assessment for the Proposed Kangra Maquasa Block C Mining development near Piet Retief, in the Mkhondo Local Municipality within the Gert Sibande District Municipality
- E. Butler.** 2019. Palaeontological Desktop Assessment for the Proposed Amendment of the Kusipongo Underground and Opencast Coal Mine in Support of an Environmental Authorization and Waste Management License Application.
- E. Butler.** 2019. Palaeontological Exemption Letter of the Proposed Mamatwan Mine Section 24g Rectification Application, near Hotazel, Northern Cape Province
- E. Butler.** 2020. Palaeontological Field Assessment for the Proposed Environmental Authorisation and Amendment Processes for Elandsfontein Colliery

E. Butler. 2020. Palaeontological Desktop Assessment for the Proposed Extension of the South African Nuclear Energy Corporation (Necsa) Pipe Storage Facility, Madibeng Local Municipality, North West Province

E. Butler. 2020. Palaeontological Field Assessment for the Proposed Piggery on Portion 46 of the Farm Brakkefontien 416, Within the Nelson Mandela Bay Municipality, Eastern Cape

E. Butler. 2020. Palaeontological field Assessment for the proposed Rietfontein Housing Project as part of the Rapid Land Release Programme, Gauteng Province Department of Human Settlements, City of Johannesburg Metropolitan Municipality

E. Butler. 2020. Palaeontological Desktop Assessment for the Proposed Choje Wind Farm between Grahamstown and Somerset East, Eastern Cape

E. Butler. 2020. Palaeontological Desktop Assessment of the Proposed Prospecting Right Application for the Prospecting of Diamonds (Alluvial, General & In Kimberlite), Combined with A Waste License Application, Registration Division: Gordonia And Kenhardt, Northern Cape Province

E. Butler. 2020. Palaeontological Impact Assessment for the Proposed Clayville Truck Yard, Ablution Blocks and Wash Bay to be Situated on Portion 55 And 56 Of Erf 1015, Clayville X11, Ekurhuleni Metropolitan Municipality, Gauteng Province

E. Butler. 2020. Palaeontological Desktop Assessment for the Proposed Hartebeesthoek Residential Development

E. Butler. 2020. Palaeontological Desktop Assessment for the Proposed Mooiplaats Educational Facility, Gauteng Province

E. Butler. 2020. Palaeontological Impact Assessment for the Proposed Monument Park Student Housing Establishment

E. Butler. 2020. Palaeontological Field Assessment for the Proposed Standerton X10 Residential and Mixed-Use Developments, Lekwa Local Municipality Standerton, Mpumalanga Province

E. Butler. 2020. Palaeontological Field Assessment for the Rezoning and Subdivision of Portion 6 Of Farm 743, East London

E. Butler. 2020. Palaeontological Field Assessment for the Proposed Matla Power Station Reverse Osmosis Plant, Mpumalanga Province

