

File No: 9/2/005/0001

**LETTER OF RECOMMENDATION FOR THE EXEMPTION OF A FULL PHASE I ARCHAEOLOGICAL IMPACT ASSESSMENT: DEVELOPMENT OF A RETIREMENT VILLAGE ON A PORTION OF THE FARM PORT ALFRED PARK, IN THE DISTRICT OF NDLAMBE, EASTERN CAPE**

**Prepared for:**

Mr Craig Weideman  
Conservation Support Services  
61 New Street  
Grahamstown  
P O Box 504  
6140  
Tel/Fax: 046-622 4526  
Email: [craig@cssgis.co.za](mailto:craig@cssgis.co.za)

**Prepared by:**

Dr Lita Webley  
Albany Museum  
Somerset Street  
Grahamstown  
6139  
Tel: 046-6222312  
Fax: 046-6222398  
Email: [L.Webley@ru.ac.za](mailto:L.Webley@ru.ac.za)

5 December 2007



**Legislation**

The National Heritage Resources Act, No 25 of 1999, Section 38 clearly indicates that any person constructing a road or similar linear developments exceeding 300m in length or developing an area exceeding 5000 square metres in extent is required to notify the responsible heritage resources authority or SAHRA. SAHRA will in turn advise whether a heritage impact assessment report is needed before development can take place.

**Background**

The development will involve the construction of a Masonic retirement village on 7.5 ha of land, part of the farm Port Alfred Park (total size 189 ha) which is currently zoned for Agriculture (Map sheet: 3326 DB Port Alfred). The vegetation is fairly sparse, as the land has been cultivated for chicory for many years. There has been partial regeneration of the indigenous bush, but there are large areas currently under dense kikuyu grass and alien vegetation (see figures 1 & 2). There are no buildings on the proposed subdivision and no evidence of any occupation in the past.

**Results of survey**

I visited the location of the proposed development on the 4 December 2007 (figures 3 & 4). It is difficult to view the soil, as the area is densely vegetated with kikuyu grass.

There are a few areas where the topsoil is visible. The soil is pale and sandy. The survey of the area failed to uncover any archaeological remains. It is unlikely that any will be present beneath the soil surface.

### **Recommendations**

A full archaeological impact assessment is not necessary as the land has been considerably disturbed and there are clearly no archaeological remains on the area set aside for development. It is recommended that development may take place, but that the developers should immediately stop with development, and call an archaeologist, if any of the following are discovered:

- a) flaked stone artefacts
- b) accumulations of bones
- c) graves or human remains
- d) accumulations of shells
- e) accumulations of historical material such as blue and white china or old bottles.

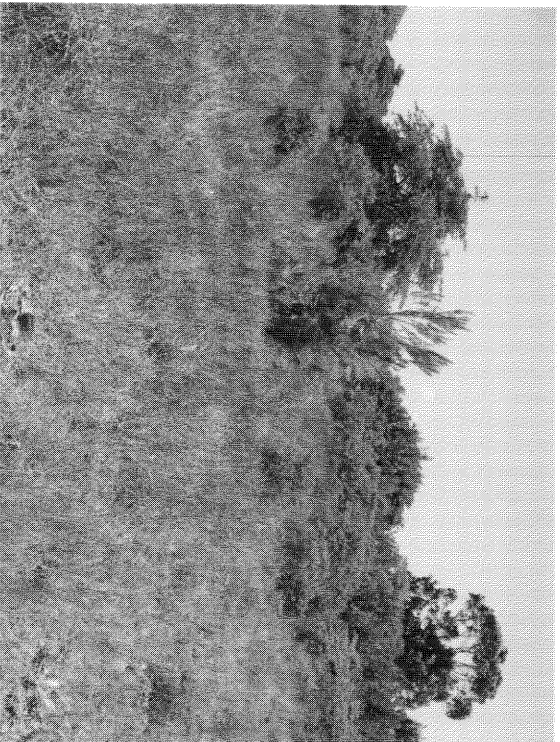


Figure: 1 Dense vegetation and kikuyu grass



Figure 2: Old chicory lands.

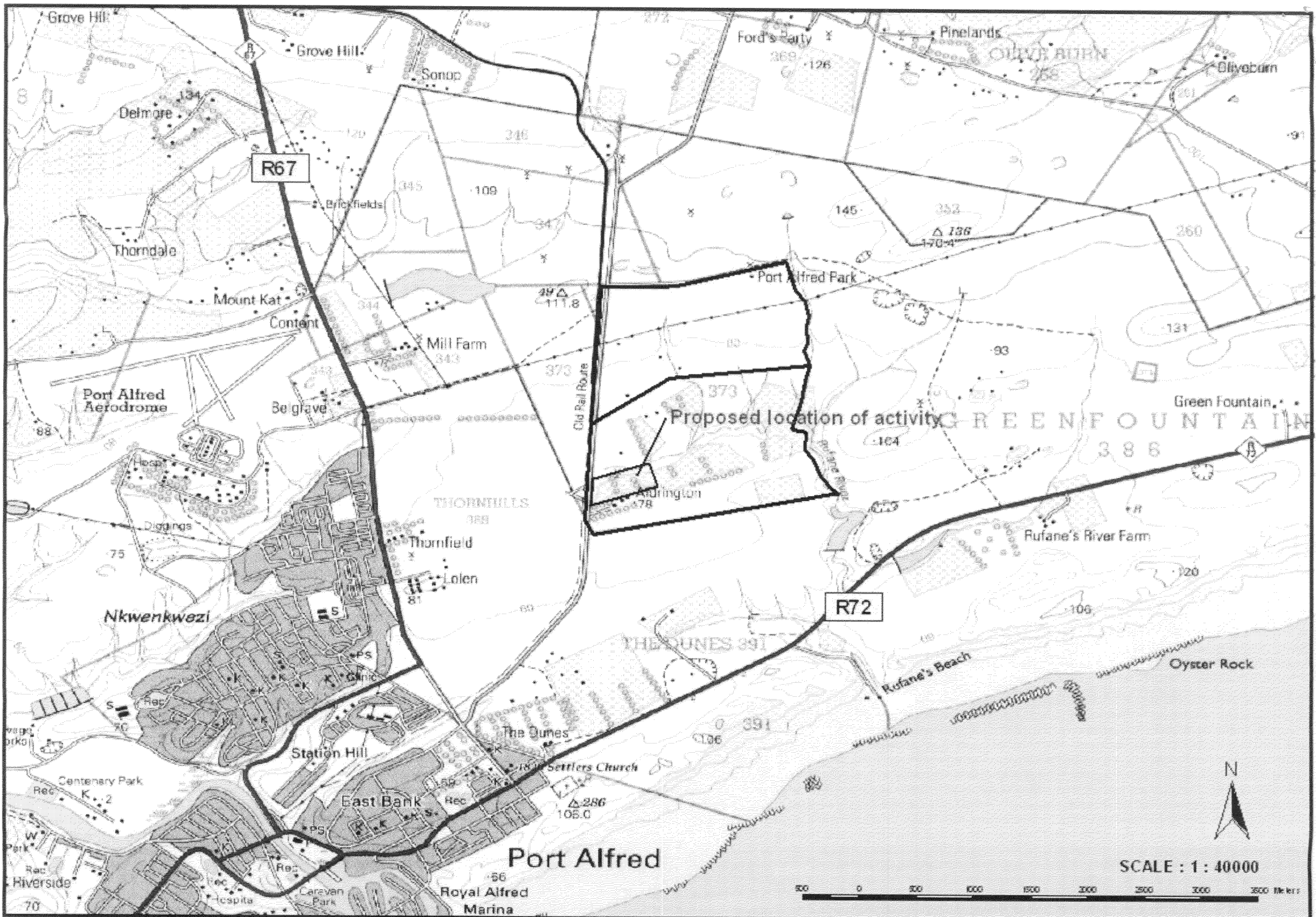


FIGURE 3



Image © 2007 DigitalGlobe  
© 2007 Europa Technologies  
© 2007 National Geographic Society

©2007 Google™

Pointer 33°34'51.94" S 26°55'22.34" E elev 63 m

Streaming ||||| 100%

Eye alt 5.44 km

FIG 4