



COBUS DREYER

Pr. Archaeologist / Heritage Resource Specialist

**P.O. Box 12910
BRANDHOF 9324
Bloemfontein
dreyerj@telkomsa.net**

**Tel: 051-444 1187
Fax: 051-444 4395
Cell: 083 357 7982**

5 OCTOBER 2007

FIRST PHASE ARCHAEOLOGICAL AND CULTURAL HERITAGE ASSESSMENT OF THE PROPOSED DIAMOND PROSPECTING IN THE DISTRICT OF ALIWAL NORTH, EASTERN CAPE:

HEUNINGKRAANS	(Portion 14 GROOTRIVIERWAGENDRIF 29)
PAARDELAAGTE	(Portion 19 GROOTRIVIERWAGENDRIF 29)
ODENDAALSTROOM	(Portion 13 GROOTRIVIERWAGENDRIF 29)
CYFERFONTEIN	(Remainder GROOTRIVIERWAGENDRIF 29)
SAAMWERK	(Portion 14 GROOTRIVIERWAGENDRIF 29)

EXECUTIVE SUMMARY

Diamond prospecting is planned at several farms along the Orange River, west of Aliwal North, Eastern Cape.

This report includes the farms Heuningkrans (P/14 Grootrivierwagendrif 29), Paardelaagte (P/19 Grootrivierwagendrif 29), Odendaalstroom (P/13 Grootrivierwagendrif 29), Cyferfontein (R/ Grootrivierwagendrif 29), Saamwerk (P/14 Grootrivierwagendrif 29).

The farmland along the river consists of an alluvial sand deposit where centre-pivot irrigation is practiced.

Several deteriorating farmhouses and farm labourer's houses are found away from the river and I foresee that the prospecting work will have no significant influence on the cultural remains in this area.

A small collection of stone flakes was found near the graves at Grave site 1, Ravensworth. This features appears to be of minor significance and will not affect the proposed developments.

I recommend that the prospecting work could continue on the lower areas along the river.

I anticipate that human burials could be discovered in the alluvial beds during the excavation work. It is important that in the case of the discovery of any burial or human remains, the work should be stopped at once, the finds should be stabilised and protected and the archaeologist should be alerted immediately.

INTRODUCTION AND DESCRIPTION

INVESTIGATION

The farms Heuningkrans, Paardelaagte, Odendaalstroom, Cyferfontein and Saamwerk in the district of Aliwal North, Eastern Cape, (Map 1) were visited on 26 September 2007. Daniel Calaca of Manhattan Mining Corporation, Benoni, took me to the sites.

The area was examined for possible archaeological and historical material and to establish the potential impact on any cultural material that might be found. The Heritage Impact Assessment (HIA) is done in terms of the National Heritage Resources Act (NHRA), (25 of 1999) and under the Environmental Conservation Act, (73 of 1989).

LOCALITY

The farms Heuningkrans (Map 2), Paardelaagte (Map 3), Odendaalstroom (Map 4), Cyferfontein (Map 5) and Saamwerk (Map 6) in the district of Aliwal North, Eastern Cape, (Map 1) are located along the Orange River, west of the town (Maps 2-6).

The farms are reached by following the Gryskoppan turn-off from the R58 main road from Aliwal North to Burgersdorp.

The area along the Orange River consists of a deep alluvial sand deposit (Fig.), which is the main concentration of centre-pivot irrigation and other agricultural activities.

GPS coordinates (Cape scale) were taken at the various features and different points are allocated at random (2826CB):

HEUNINGKRAMS

HKA 30°35'22"S. 026°22'09"E Altitude 1275m (Fig.1).

HKB (Border Paardelaagte) 30°34'51"S. 026°23'41"E Altitude 1276m (Fig.2).

FARMHOUSE 30°35'08"S. 026°23'09"E Altitude 1284m (Fig.3).

PAARDELAAGTE

FARMHOUSE 30°34'49"S. 026°24'13"E Altitude 1286m (Fig.6).

PA 30°34'19"S. 026°25'00"E Altitude 1287m (Fig.7).

ODENDAALSTROOM

HOTEL 30°34'12"S. 026°26'03"E Altitude 1279m (Fig.8).

GRAVES 1 30°34'02"S. 026°25'47"E Altitude 1281m (Figs.10-11).

FARMHOUSE 30°34'08"S. 026°25'40"E Altitude 1230m (Fig.12).

GRAVES 2 30°34'24"S. 026°26'13"E Altitude 1290m (Figs.13-23).

CYFERFONTEIN

SFTN (Farmhouse) 30°37'11"S. 026°27'48"E Altitude 1307m (Fig.24).

SFTN A 30°37'29"S. 026°27'52"E Altitude 1303m (Fig.25).

SAAMWERK

30°38'41"S. 026°30'48"E Altitude 1309m (Fig.1).

30°38'07"S. 026°30'07"E Altitude 1301m (Fig.4).

30°40'20"S. 026°31'02"E Altitude 132m (Fig.3).

30°39'25"S. 026°32'31"E Altitude 1293m (Figs.8&9).

30°39'01"S. 026°31'30"E Altitude 1289m (Fig.10&11).

30°38'41"S. 026°30'48"E Altitude 1309m (Fig.1).

30°38'07"S. 026°30'07"E Altitude 1301m (Fig.4).

RESULTS

FINDS

HEUNINGKRAMS

The area along the river is used to produce hay under centre-pivot irrigation (Fig.1).

A small collection of stone flakes and cores (Fig.5) was found in a gravel road at Heuningkrans (Fig.4). The origin of this find is not clear and seems to be part an insignificant scatter.

PAARDELAAGTE

Extensive centre-pivot irrigation farming is practiced on the alluvial sand deposit along the river (Fig.7).

ODENDAALSTROOM

Flood Irrigation on the land along the river

Old Hotel

The comparison of the two photographs Deterioration of the building is alarming
Beyond repair

Gravesite 1 about 4 graves (Figs.10-11).

Daniel Jacobus van Burick Born 29/9/1917 Died 2/9/1920
 Nicolaas van Burick Born 26/6/1915 Died 30/8/1920

One grave without inscription

Gravesite 2 about 58 graves (Fig.13-23).

GL Maartens Born 2/11/1910 Died 2/1/1911
 Margaret Gertruida Nichols Born 10/2/1908 Died 5/5/1910
 Magrieta Gertruida Putter Born 10/10/1910 Died 10/1/1911 (Fig.16)
 Ancova? van Heerden Born 12/2/1899 Died ?
 Hendriena Alida Coetzee Born 26/7/1876 Died at the age of 8 months.
 MJP Badenhorst Born 1/12/1891 Died 1/8/1908 (Fig.18).

CYFERFONTEIN

Old farmhouse (Fig.24).

Orange River turns away from the farm (Fig.25).

SAAMWERK

BADSPRUIT 1

A heavily soldered tin can of Anglo-Boer War origin (Fig.2) was found near one of the old diggings. This is an isolated occurrence and it is difficult to explain the significance and context of the object.

Heaps of river washed pebbles represent the remains of old diamond diggings (Fig.4). These features indicate the wide distribution of former routes followed by the river.

The old farmhouse (Fig.1) is restored and will not be affected by the proposed diamond search.

BADSPRUIT 2A

More traces of the old diamond diggings are present. These features form part of the wider distribution of prospecting during the nineteenth and twentieth century.

The old farmhouse and labourer's houses (Figs.5&6) are situated outside the proposed area of development and will not be affected by the proposed diamond search.

The extent of the alluvial sandy deposit is very clear here, some substantial distance from the river (Fig.7).

RAVENSWORTH (ORANGE VALLEY 5)

Two clusters of graves are located on the farm Ravensworth.

Grave site 1 contains about 13 graves (Figs.8&9), of former farm workers.

Grave site 2 appears to be older than site 1. It contains about 20 individual stone covered graves (Figs.10&11).

A small collection stone flakes occurs on the surface (Fig.12) near Gravesite 1. The flake sample is relatively small and it is difficult to classify the cultural material through the application of the standard tool typology and basic characteristics.

The Lydianite flakes and cores are smooth and mostly well patinated. Artefacts display scars and secondary retouch, exposing the centre core material. Despite the trimming, the flakes are unutilised and cannot be described as "tools".

IMPACT ASSESSMENT

The lithic assemblage appears as a general distribution of unutilised flakes. Flaked stone artefacts are limited to the higher ground, which falls outside the planned area of development.

The impact on the cultural heritage remains of the proposed site at Ravensworth will be of minor significance.

The proposed diamond prospecting developments at Ravensworth will have an insignificant impact on any archaeological or cultural heritage remains at the site.

No other cultural, historical or palaeontological components were found during the investigation, nor were there any existing buildings in the area.

The graves and burial grounds are of major significance and should be avoided. Care should be taken not to damage the graves during and after excavations.

From previous experience, I anticipate that human burials and skeletal remains could be discovered during the excavation work on the riverbanks (Brink, Dreyer & Loubser 1992, Dreyer 1996).

RECOMMENDATIONS

I recommend that the proposed developments at Ravensworth, Aliwal North, may proceed.

It is important, however, that the field team should be on the lookout for the presence of human skeletal material in the area near the river. In the case of the discovery of any burial or human remains, the work should be stopped at once, the finds should be stabilised and protected and the archaeologist should be alerted immediately.

As prescribed by the graves should be protected and fenced
Regular maintenance should be done

MITIGATION

Concerning the area for the proposed developments, mitigation measures will be required in the case of the discovery of any human skeletal material.

ACKNOWLEDGEMENTS

Daniel Calaca of Manhattan Mining Corporation, Benoni, accompanied me to the sites.

HEUNINGKRANS

PAARDEN LEEGTE

ODENDAALSTROOM

CYFERFONTEIN

SAAMWERK

SELECT BIBLIOGRAPHY:

BERGH, J.S. & VISAGIE, J.C. 1986. The Eastern Cape Frontier Zone 1660-1980: a cartographic guide for historical research. Durban: Butterworth.

BRANCH, B. 1991. The life and leguaans of "Gogga" Brown. African Wildlife Volume 45, No.4: 172-175.

BRINK, J.S., DREYER, J.J.B. & LOUBSER, J.H.N. 1992. Rescue excavations at Pramberg, Jacobsdal, south-western Orange Free State. Grahamstown: Albany Museum. Southern African Field Archaeology 1(1):54-60.

DEACON, J. 1992. Archaeology for Planners, Developers and Local Authorities. Cape Town: National Monuments Council.

DRENNAN, M.R. (n.d.). Gogga Brown. The life-story of Alfred Brown, South Africa's Hermit-Naturalist. Cape Town: Maskew Miller.

DREYER, J. 1996. Clay "figurines" from the Riet River - A case of natural site formation. Grahamstown: Albany Museum. Southern African Field Archaeology 5(2):99-102.

DU PLOOY, F.J. 1977. Aliwal-Noord - Eenhonderd Jaar. Aliwal North Municipality and Divisional Council.

HUMPHREYS, A.J.B. 1986. Searching for the past. Cape Town: David Philip.

PISTORIUS, J.C.C. 1994. Eskom Archaeological Site Identification Guide. Johannesburg: Eskom.

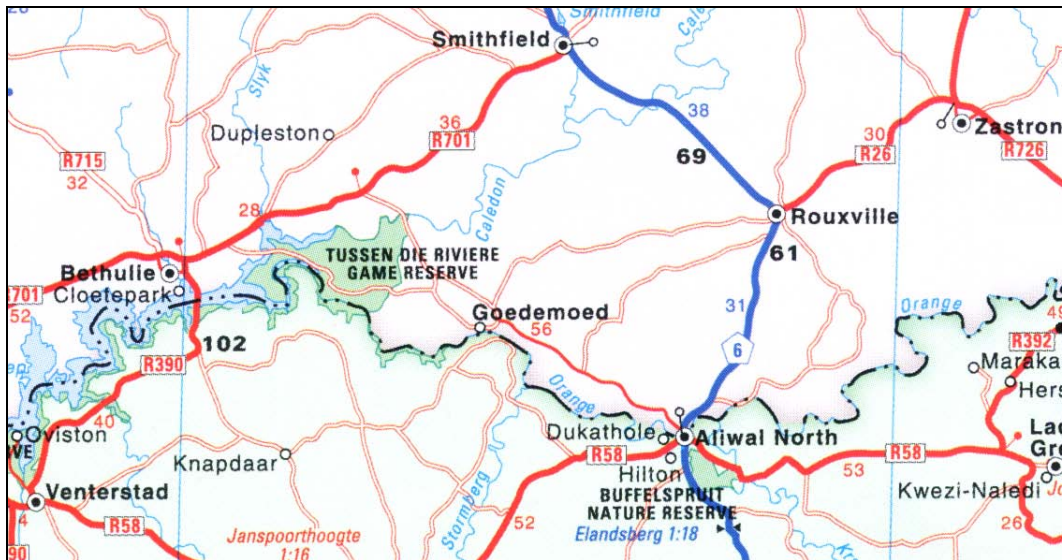
SAMPSON, C.G. 1968. The Middle Stone Age Industries of the Orange River Scheme Area. Bloemfontein: National Museum Memoir Nr. 4.

SAMPSON, C.G. 1970. The Smithfield Industrial Complex: Further Field Results. Bloemfontein: National Museum Memoir Nr. 5.

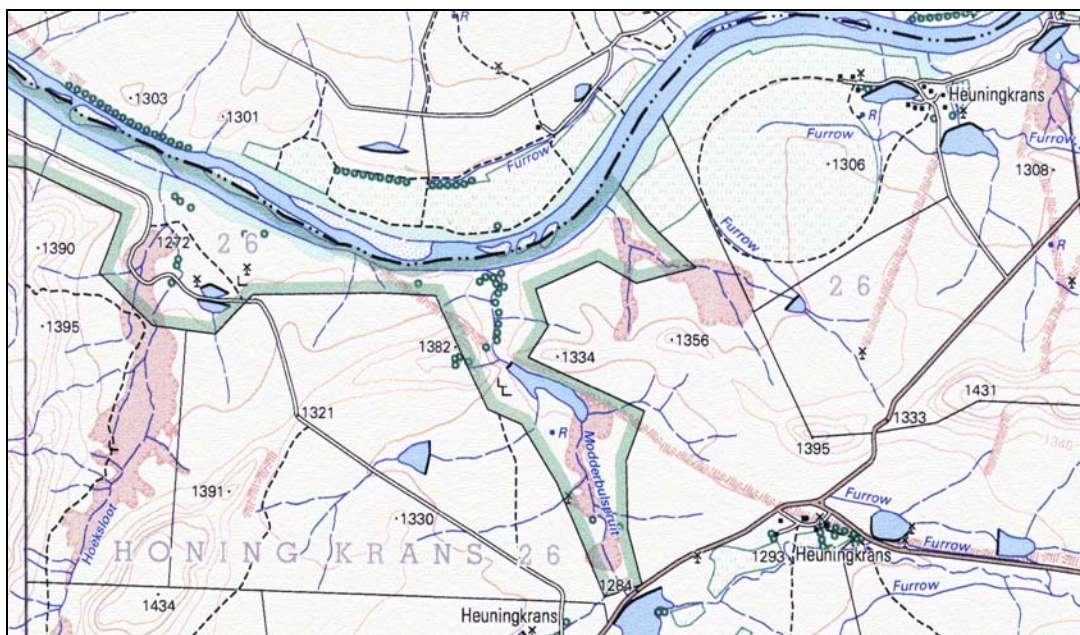
SAMPSON, C.G. 1972. The Stone Age Industries of the Orange River Scheme and South Africa. Bloemfontein: National Museum Memoir Nr. 6.

SMITH, C. 2000. Bewys van vergete Vrystaatse dorp gekry.
Volksblad 14 Februarie 2000.

LIST OF ILLUSTRATIONS



Map 1 Locality of Aliwal North in relation to other towns along the Orange River.



Map 2 Locality of Heuningkrans 26, Aliwal North (3026CB).



Fig.1 Point HKA at Heuningkrans. Line of trees indicate position of Orange River.



Fig.2 Point HKB at Heuningkrans on the border with Paarden Laagte.



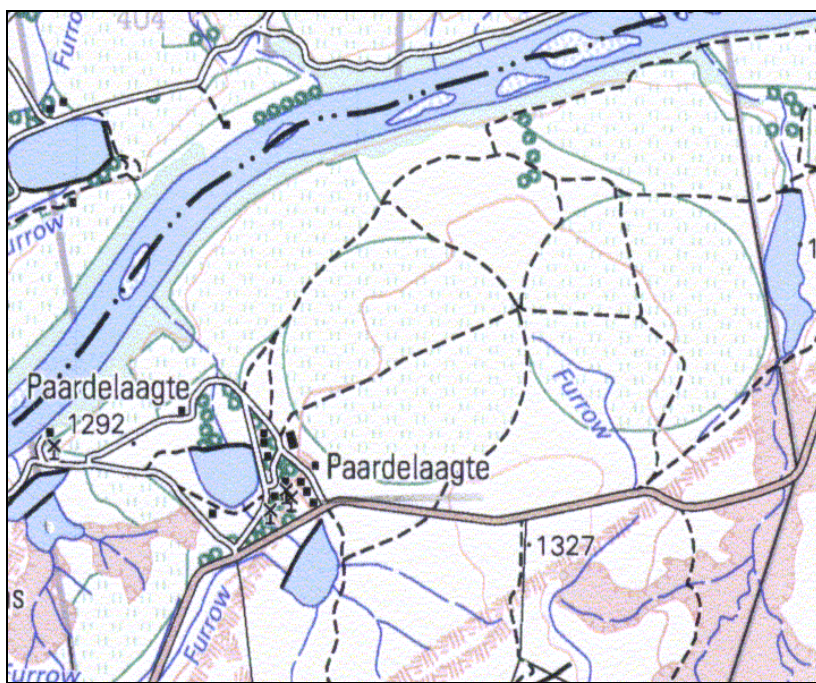
Fig.3 The farmhouse at Heuningkrans.



Fig.4 Locality of stone flakes in road at Heuningkrans.



Fig.5 Stone flakes found at Heuningkrans. (Pocketknife = 83 mm).



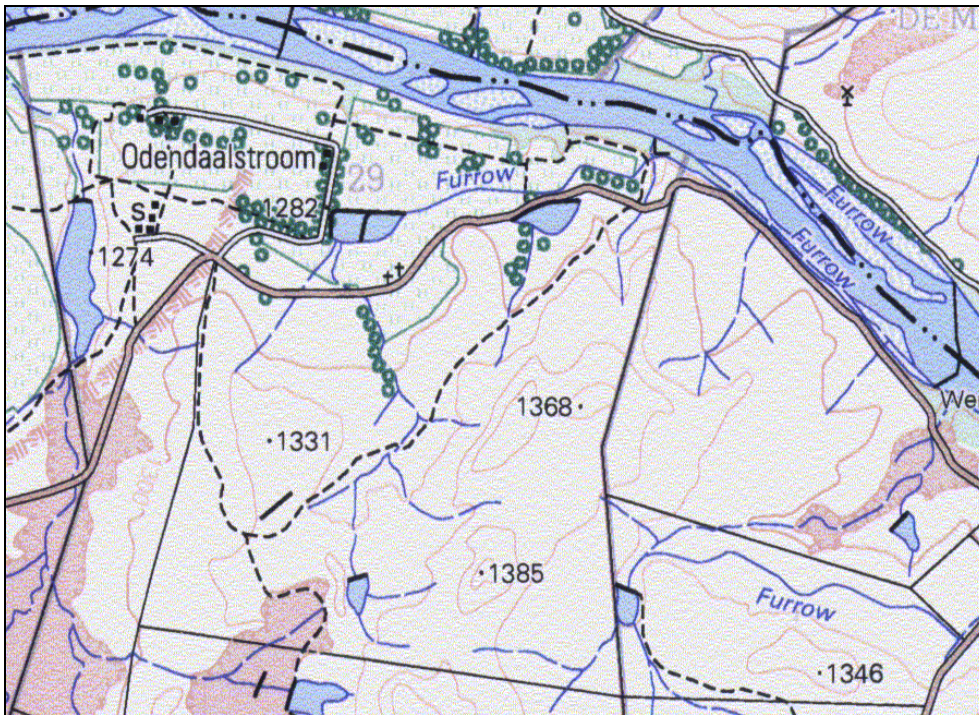
Map 3 Locality of Paardelaagte, Aliwal North (3026CB).



Fig.6 Farmhouse at Paardelaagte.



Fig.7 Centre-pivot irrigation at Paardelaagte.



Map 4 Locality of the farm Odendaalstroom.



Fig.8 Old hotel at Odendaalstroom, Aliwal North (2007).

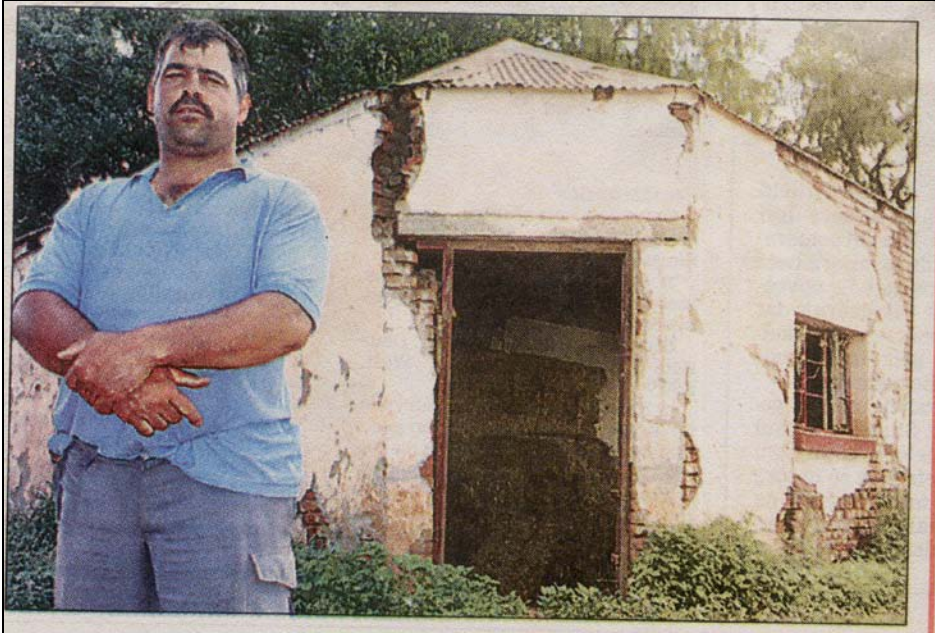


Fig.9 Picture of the old hotel at Odendaalstroom, taken in 2000 (Volksblad 14/2/2000).



Fig.10 Grave Site 1, Odendaalstroom.



Fig.11 Grave Site 1, Odendaalstroom.



Fig.12 Farmhouse, Odendaalstroom.



Fig.13 Grave Site 2, Odendaalstroom.



Fig.14 Grave Site 2, Odendaalstroom, Aliwal North.



Fig.15 Grave Site 2, Odendaalstroom, Aliwal North.



Fig.16 Tombstone of Magrieta Gertruida Putter *10/10/1910 †10/1/1911.
Grave Site 2, Odendaalstroom, Aliwal North.



Fig.17 Grave Site 2, Odendaalstroom, Aliwal North.



Fig.18 Grave of MJP Badenhorst *1/12/1891 †1/8/1908.
Grave Site 2, Odendaalstroom, Aliwal North.



Fig.19 Grave Site 2, Odendaalstroom, Aliwal North.



Fig.20 Grave Site 2, Odendaalstroom, Aliwal North.



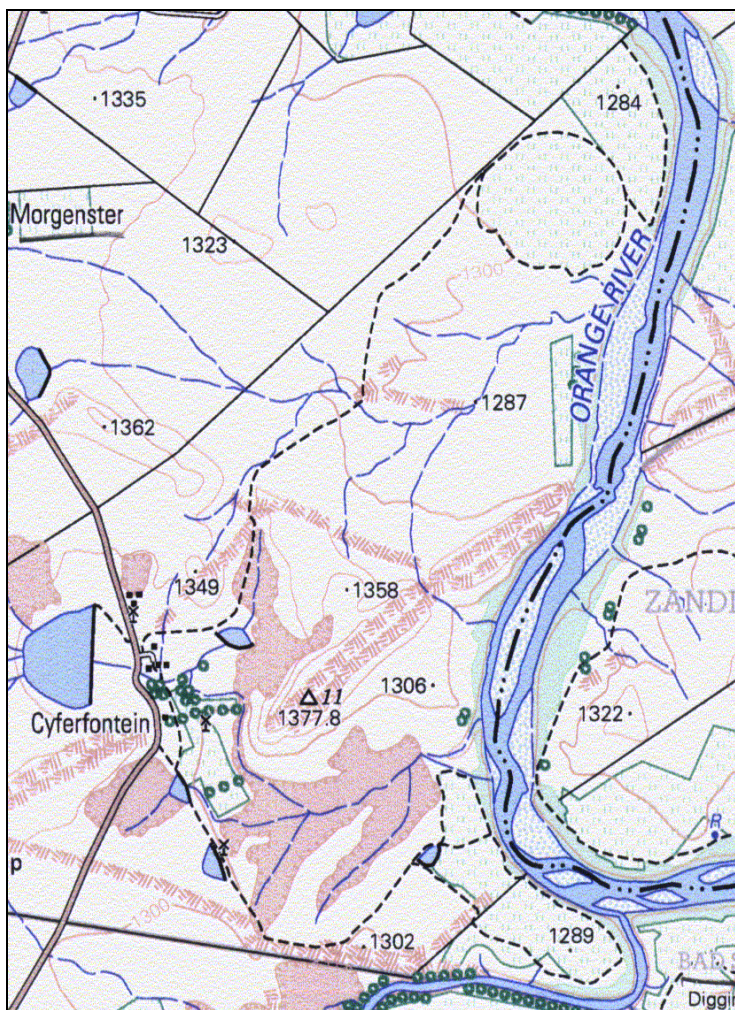
Fig.21 Grave Site 2, Odendaalstroom, Aliwal North.



Fig.22 Grave Site 2, Odendaalstroom, Aliwal North.



Fig.23 Grave Site 2, Odendaalstroom, Aliwal North.



Map 5 Locality of Cyferfontein, Aliwal North.



Fig.24 Old farmhouse Cyferfontein, Aliwal North..



Fig.25 SFTN A Cyferfontein, Aliwal North.

Fig.26 Cyferfontein, Aliwal North.

Fig.27 Cyferfontein, Aliwal North.

Fig.28 Cyferfontein, Aliwal North.

Fig.29 Cyferfontein, Aliwal North.

Map 6 Saamwerk, Aliwal North.