

# Agency for Cultural Resource Management

Specialists in Archaeological Studies and Heritage Resource Management

PO Box 159 Riebeeck West 7306 Phone/Fax 022-461 2755  
E-mail: [acrm@wcaccess.co.za](mailto:acrm@wcaccess.co.za) Cellular: 082 321 0172

**07 March, 2007**

**Att:** Ms Desireé du Preez  
Ecosense  
PO Box 12697  
Die Boord  
7613  
Stellenbosch

Dear Ms du Preez

## **PHASE 1 ARCHAEOLOGICAL IMPACT ASSESSMENT PROPOSED DEVELOPMENT ERF 1892 BLUE DOWNS CITY OF CAPE TOWN**

### **1. Introduction and brief**

Ecosense<sup>1</sup>, on behalf of Ibuyile Development Consortium, requested that the Agency for Cultural Resource Management conduct a Phase 1 Archaeological Impact Assessment for a proposed housing and mixed-use development on Erf 1892 Blue Downs, in the City of Cape Town. Bulk infrastructure such as roads and services are also planned.

*Housing +  
Assessments  
Infrastructure*

The affected property is currently zoned Undetermined, and will be rezoned and subdivided to accommodate the proposed development activities.

*Rezoning*

The extent of the proposed development (about 30 ha) falls within the requirements for an archaeological impact assessment as required by Section 38 of the South African Heritage Resources Act (No. 25 of 1999).

A 'Notification of Intent to Develop' (NID) checklist has been completed by Heritage Consultant Mr Chris Snelling and submitted to Heritage Western Cape Built Environment and Landscape Committee (BELCOM) for comment. A copy of the Phase 1 Archaeological Impact Assessment report has also been included with this submission.

*N.I.D*

The site visit and assessment took place on the 26<sup>th</sup> February, 2007.

A locality map is illustrated in Figure 1.

*Comment BELCOM staff*

An aerial photograph of the study site is illustrated in Figure 2.

---

<sup>1</sup> Ecosense is represented by Ms Desireé du Preez. Fax (021) 887 2654

## **2. Terms of reference**

The Terms of Reference for the specialist Phase 1 Archaeological Impact Assessment are to:

- Identify and map heritage resources on the proposed site;
- Determine the importance of heritage resources on the proposed site;
- Determine and assess the potential impacts of the proposed development on the heritage resources, and
- Recommend mitigation measures to minimise impacts associated with the proposed development.

## **3. The site**

The subject property (S° 33 59 47.5 E° 18 41 380 on map datum wgs 84) is located in the residential suburb of Blue Downs, in Cape Town. Access to the site is via Hindle Road, off the R300. The eastern boundary of the proposed site is defined by Eerste River Way. Apart from the Blue Downs Sports Fields, and new development activity alongside Hindle Road in the north-west, the subject property is infested with invasive alien vegetation (Figures 3-10). Some high, well-vegetated sand dunes are aligned alongside Eerste River Way. A wide strip of land has been cut alongside the northern boundary of the property (adjacent to the sports field), while a small wetland occurs in the same area. Much dumping of building rubble and refuse is evident along the margins of the site. Apart from the high dunes alongside Eerste River Way, there are no significant landscape features on the site.

Surrounding land use comprises mainly residential housing, Sports Fields, commercial enterprises and some light industry. Low cost housing occurs at Mfuleni to the south west of the study site.

## **4. Approach to the study**

The proposed site was subjected to a foot survey. However, the study site is infested with invasive alien vegetation, of which some areas are almost impenetrable, resulting in very poor archaeological visibility.

The dunes alongside Eerste River Way were searched in detail.

## **5. Results of the study**

No pre-colonial archaeological heritage remains were located during the baseline study.

## **6. Impact statement**

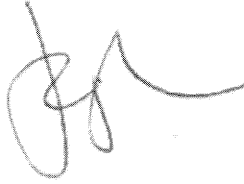
The impact of the proposed development of Erf 1892 Blue Downs on important archaeological heritage remains is likely to be very low.

The probability of locating significant archaeological heritage remains during implementation of the project is likely to be improbable.

## **7. Conclusion**

The archaeological assessment has shown that Erf 1892 Blue Downs is suitable for development.

Yours sincerely

A handwritten signature in black ink, appearing to be 'JK' or similar initials, written in a cursive style.

Jonathan Kaplan

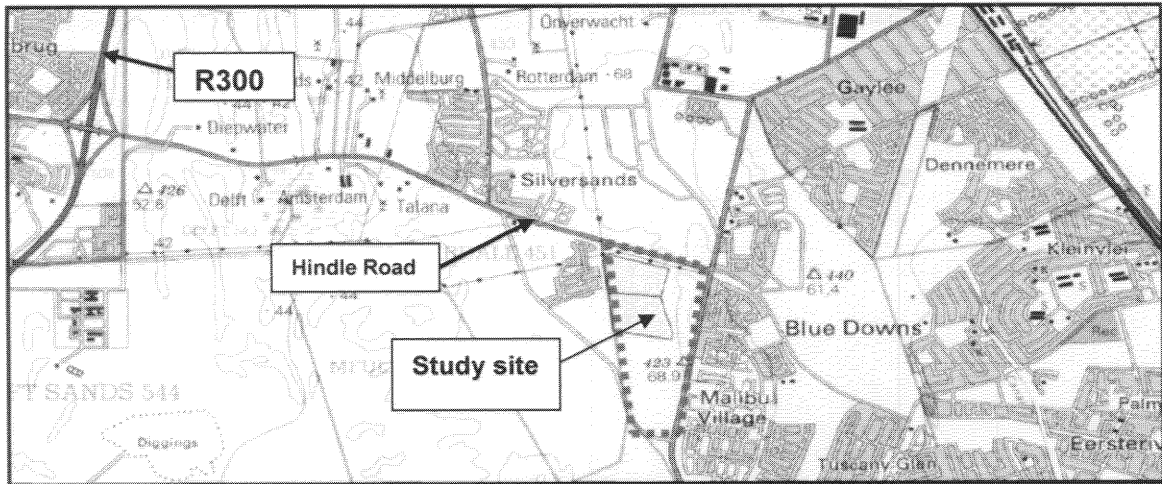


Figure 1. Locality Map (3318 DC Bellville)

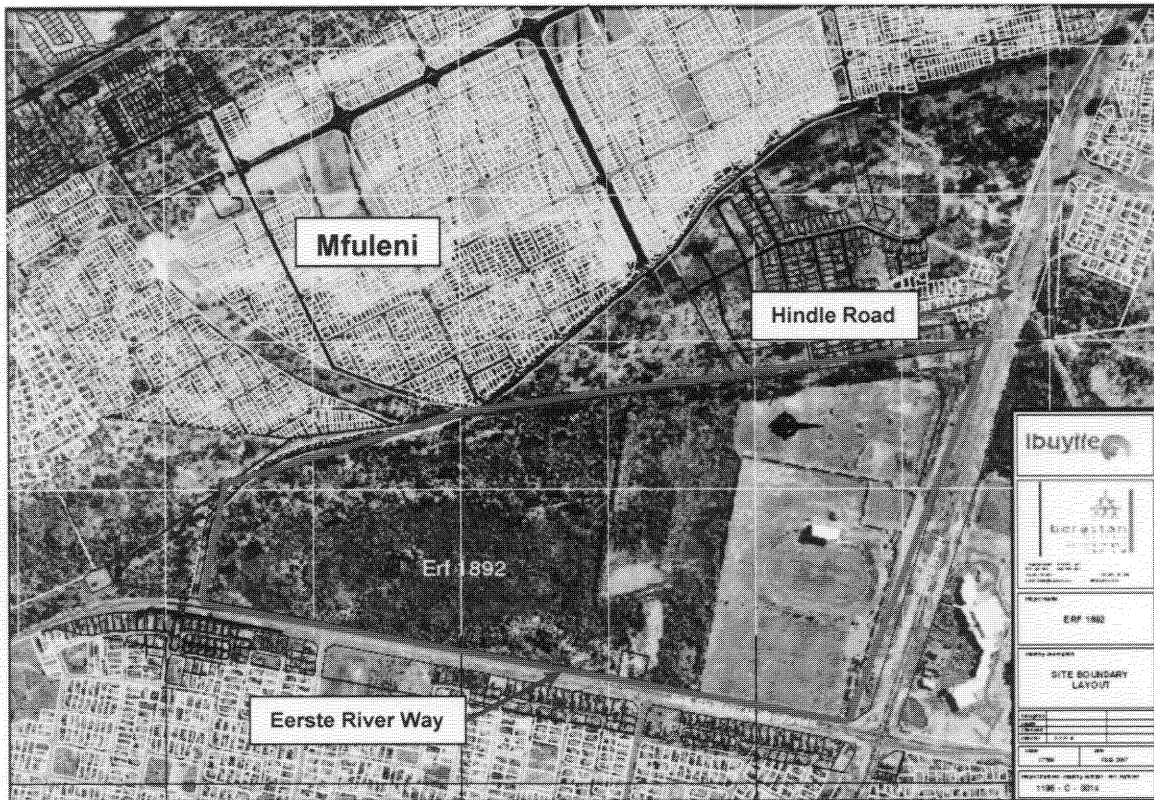
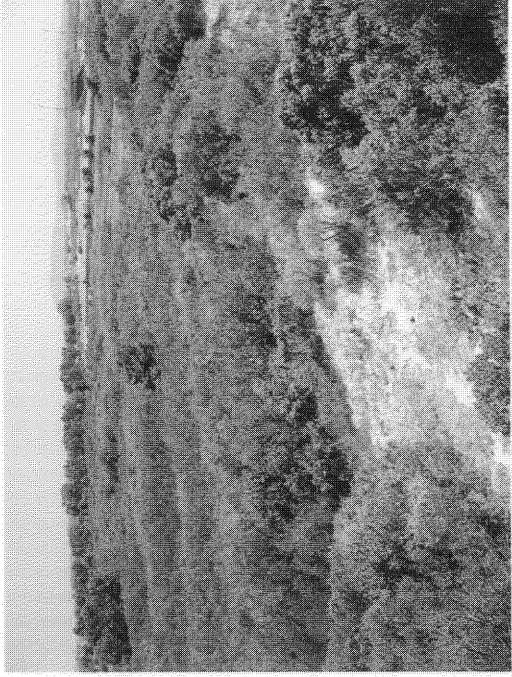


Figure 2. Aerial photograph of the study site



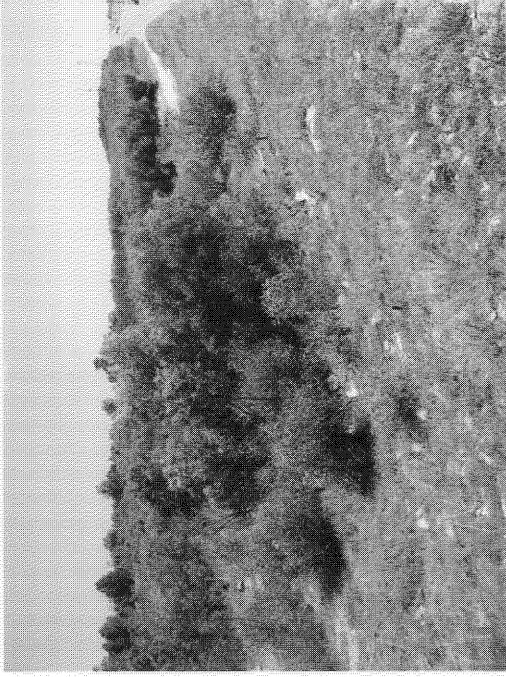
**Figure 3. View of the site facing south.**



**Figure 5. View of the site facing west**

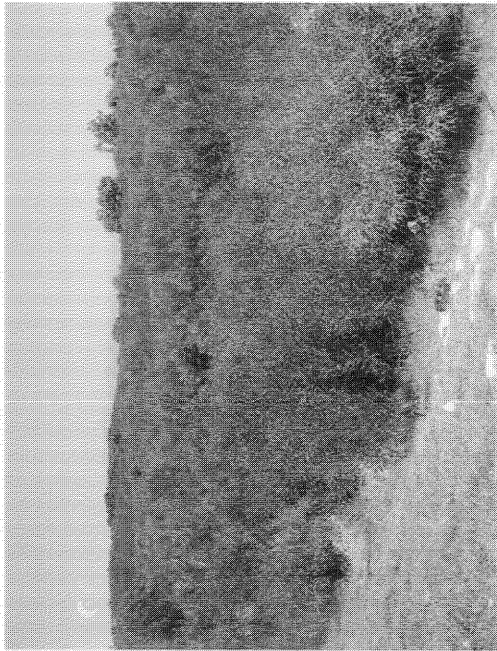


**Figure 4. View of the site facing west.  
Table Mountain is in the background**



**Figure 6. View of the site facing north.  
Eerste River Way is to the right of the plate.**

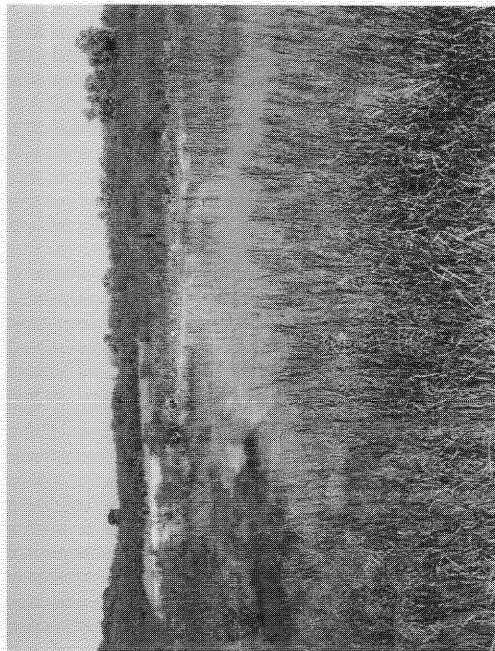




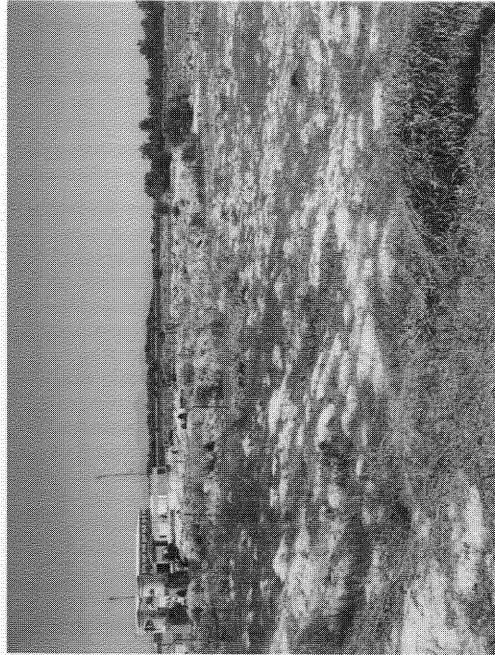
**Figure 7. View of the site facing south**



**Figure 9. Strip of land cleared alongside the Blue Downs Sports Field**



**Figure 8. Wetland area in the north alongside the Blue Downs Sports Ground**



**Figure 10. View of the site taken from Hindle Road. Floodlights of the Blue Downs Sports field can be seen.**