

9/2/05/0051

# ARCHAEOLOGICAL STUDY STONY POINT, BETTY'S BAY

Prepared for

**HANGKLIP-KLEINMOND MUNICIPALITY**

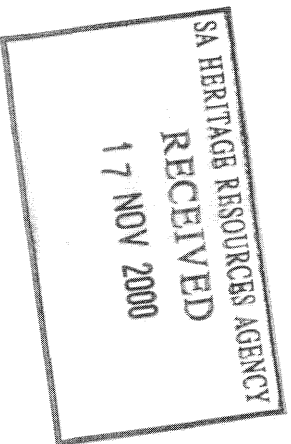
By

Agency for Cultural Resource Management  
Specialists in Archaeological Studies & Heritage Resource Management

P. O. Box 159  
Riebeeck West  
7306

Ph/Fax: 022 461 2755  
Mobile: 082 321 0172

E-mail: [acrm@mbury.new.co.za](mailto:acrm@mbury.new.co.za)



**NOVEMBER  
2000**

### Executive summary

Two archaeological sites were located during a study of the proposed upgrading of Stony Point, Betty's Bay.

The proposed development envisages a whaling museum complex, open space and associated land uses.

A large shell midden was located at the end of the footpath overlooking the penguin-viewing site. The midden has been severely damaged by the footpath, which cuts through the edge of the midden. Human impact and natural erosion continue to cause further damage to the site.

Construction of the viewing platform and related earthworks has also resulted in large-scale damage to the midden.

A large portion of the shell midden remains intact, however.

Fragmented shellfish remains and a few stone tools were located on the vegetated sand dune immediately adjacent to the Stony Point car park.

The historical remains of the old whaling station are also located on the site.

The proposed development of the whaling museum complex will not impact on any precolonial archaeological sites.

Proposed upgrading of the footpath and improved viewing of the penguin colony will, however, likely impact negatively on the shell midden at the penguin-viewing colony.

With regard to the proposed Stony Point Whaling Museum development, the following archaeological recommendations are made.

- The exposed edges of the shell midden at the penguin-viewing site should be stabilised, possibly by backfilling and vegetated. This will reduce further erosion and damage to the midden.
- Visitors to the penguin colony should stay on the existing footpaths and keep off the shell midden.
- The footpath should not be widened further in any way that will impact negatively on the shell midden.
- It would be preferable to rehabilitate the existing footpath and to construct a raised boardwalk on the seaward site of the footpath.
- Proposed upgrading of the existing penguin-viewing site may impact on the shell midden. Proposals relating to the upgrading must be assessed by a professional archaeologist.

- Interpretative signage relating to the shell midden and the precolonial history of Stony Point should be developed in consultation with a professional archaeologist, or the South African Heritage Resources Agency.
- The South African Heritage Resources Agency should be consulted at all stages of planning for the proposed whaling museum development.
- Protection of the shell midden adjacent to the car park should be included in the Stony Point Environment Management Plan. Proposals for future upgrading of the car park must be assessed by a professional archaeologist.

The above recommendations are subject to the approval of the South African Heritage Resources Agency Plans Committee.

## **1. INTRODUCTION**

### **1.1 Background and brief**

The Hangklip-Kleinmond Municipality has requested that the Agency for Cultural Resource Management undertake an archaeological study of the proposed upgrading of Stony Point, Betty's Bay, on the southern Cape coast.

The proposed development comprises a whaling museum complex, open space and associated land uses.

The aim of the study is to locate, identify and map archaeological remains that may be negatively impacted by the proposed project, to propose measures to mitigate against the impact, and to guide the development process.

## **2. TERMS OF REFERENCE**

The terms of reference for the archaeological study were:

1. to determine whether there are likely to be any archaeological sites of significance;
2. to identify any sites of archaeological significance;
3. to assess the sensitivity and significance of archaeological sites;
4. to assess the status and significance of any impacts resulting from the proposed development; and
5. to identify mitigatory measures to protect and maintain any valuable archaeological sites that may exist.

## **3. THE STUDY SITE**

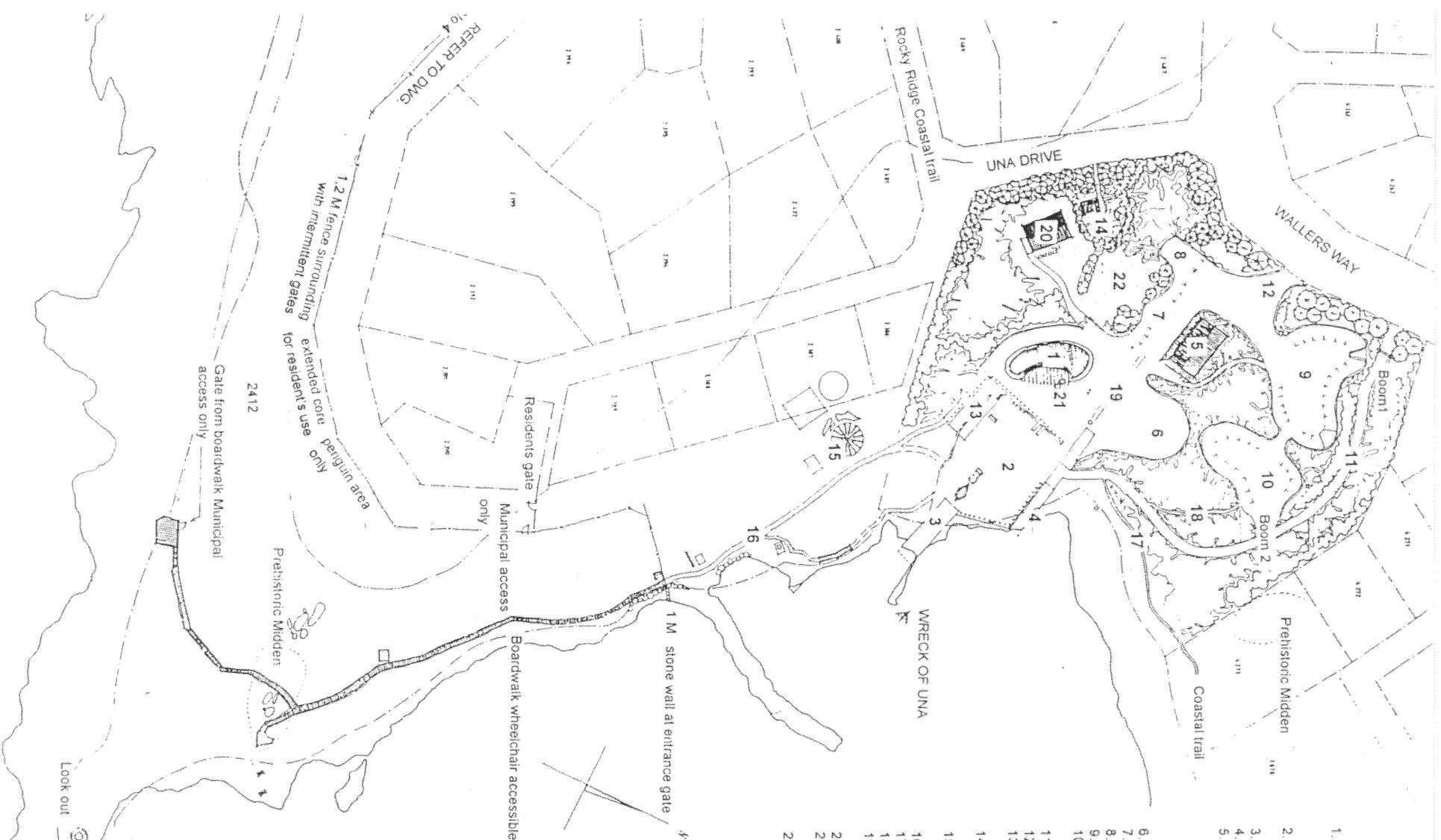
The study site is illustrated in Figure 1.

Stony Point is a rocky promontory that juts into the sea at Betty's Bay. The historical remains of the old whaling station are present on the site (Erasmus 2000; Halkett 2000).

The proposed development is concerned with the upgrading of Erf 2411 and Erf 2412.

Erf 2411 is highly degraded and large areas have been cleared and are used for parking, the municipal storehouses and vehicle workshop and an MTN mast. The cellular communications company intend to locate a new mast on the site (Erasmus 2000).

No infrastructure exists on Erf 2412. A penguin colony has established itself on Stony Point. A footpath has also been worn through the vegetation to the Point. The path is in a poor condition and is not maintained in any way (Erasmus 2000).



**KEY**

1. Whale Museum. Complex with tearoom & outdoor seating area, Seabird & Nature Reserve Interpretation Centre.
2. Quayside area, whaling station remains with interpretive signage.
3. New slip way
4. Old slip way
5. Fully renovated municipal building housing, with facade redesign, to include
  - a) Sea rescue boat unit
  - b) Seabird rehabilitation unit
  - c) Facilities for boat club
6. Parking for Boat Club trailers
7. Staff parking & disabled parking
8. Two bus parking bays
9. Main visitor parking area
10. Overflow parking for visitors' cars, minibuses & Boat Club trailers
11. Exclusive access road for Boat Club, with boom
12. Visitor car & bus entrance & exit
13. Archaeological remains of whaling station butter house, with interpretive signage
14. Location of mast, 39m height lattice structure no stays
15. Archaeological remains of whaling station anc tank stands, with interpretive signage
16. Upgraded, unfenced footpath to Nature Reserve
17. Footpath
18. Footpath
19. Archaeological remains of whaling station metal tracks
20. Municipal residential building
21. Archaeological remains of whaling station fertilizer driers
22. Grassed area

Figure 1. Archaeological study, Stony Point, Betty's Bay: study site and plan of the proposed development.

#### **4. SITE DETAILS**

Site details are described by Erasmus (2000:5-6), while Halkett (1998:10-11) describes the buildings, structures and features relating to the historic whaling station. Numerous historical photographs of the whaling station and its buildings and structures are also on record (Halkett 1998).

#### **5. DETAILS OF THE PROPOSED DEVELOPMENT**

The proposals for the Stony Point development are illustrated in Figure 1.

On Erf 2411

- Establishment of a whale museum/interpretative centre.
- Ablution facilities
- Possible tea-room/restaurant
- Parking facilities
- Boat Club facilities

On Erf 2412

- Upgrading of the facilities to allow for the improvement of pedestrian access, in the form of footpaths and possible boardwalks.
- Removal of the existing fence and relocation of the fence to enclose the penguin breeding area.
- Review of the existing informal pathways in the proposed nature reserve to the west of Stony Point.

#### **6. STUDY APPROACH AND DOCUMENTATION OF ARCHAEOLOGICAL SITES**

##### **6.1 Method of survey**

The approach used in the archaeological study entailed a detailed foot survey of the study site.

## 7. RESULTS OF THE ARCHAEOLOGICAL IMPACT ASSESSMENT

### Stony Point 1

A large shell midden was located at the end of the footpath overlooking the penguin-viewing site. The midden has been severely damaged by the footpath, which cuts across the edge of the site (Figures 2 & 3). Human impact and natural erosion continue to cause further damage to the shell midden (Figure 4).

Construction of the viewing site and related earthworks has also resulted in large-scale damage to the midden (Figure 5).

A  $\pm$  10-cm thick section of shell midden has been exposed along the edge of the footpath, while large amounts of crushed and fragmented shell have spilled down the steep slope leading to the fence which encloses the penguin colony (Figures 3 & 5).

A large portion of the shell midden is vegetated and remains intact, however.

The shellfish remains at Stony Point 1 are dominated by *Haliothis* (perlemoen), with small amounts of mussel and limpet also occurring. One stone flake was located in the footpath. No pottery was found, suggesting that the site may be older than 2000 years.

Significance of finds: **high**

Conservation rating: **high**

Suggested mitigation: **The exposed sections of the shell midden should be stabilised, possibly by backfilling and vegetated**

### Stony Point 2

Fragmented shellfish remains (perlemoen and mussel) were located on a vegetated sand dune immediately adjacent the Stony Point car park (Figure 6). One hammerstone, one chunk and one grindstone fragment were found on open patches on the east-facing slope of the dune.

Significance of finds: **medium - high**

Conservation rating: **medium**

Suggested mitigation: **Protection of the shell midden should be included in the Stony Point Environment Management Plan**

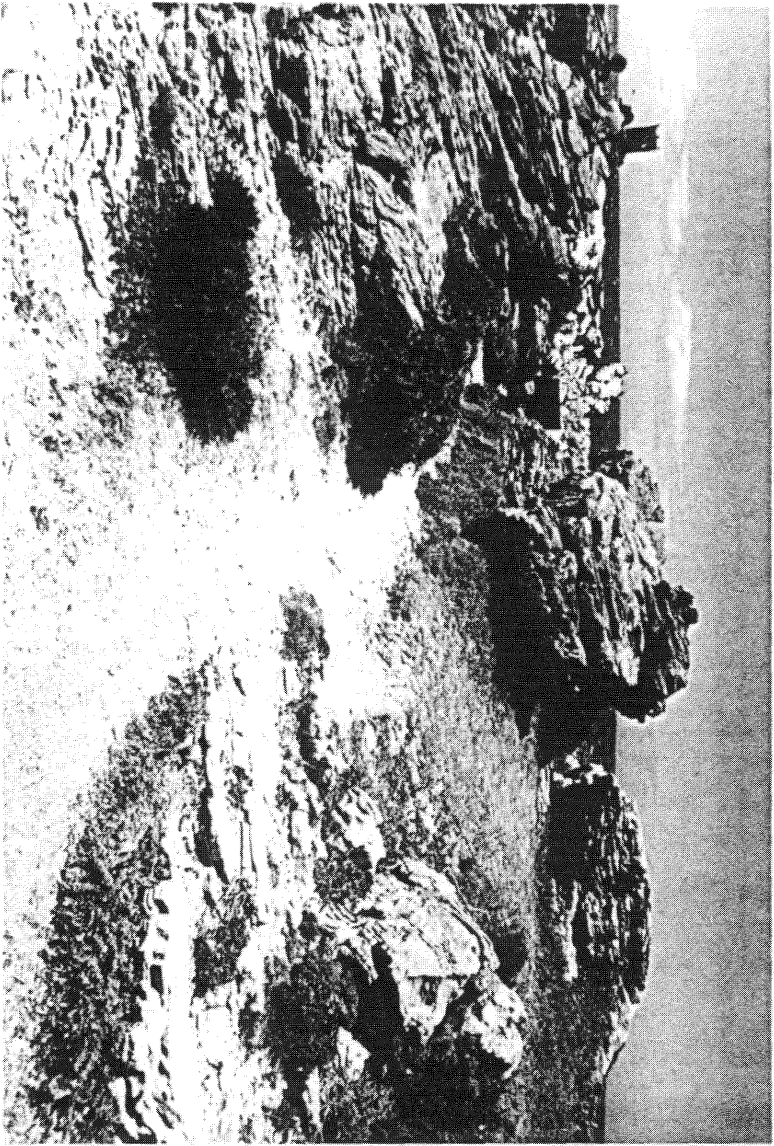


Figure 2. Archaeological study, Stony Point, Betty's Bay. Stony Point I.

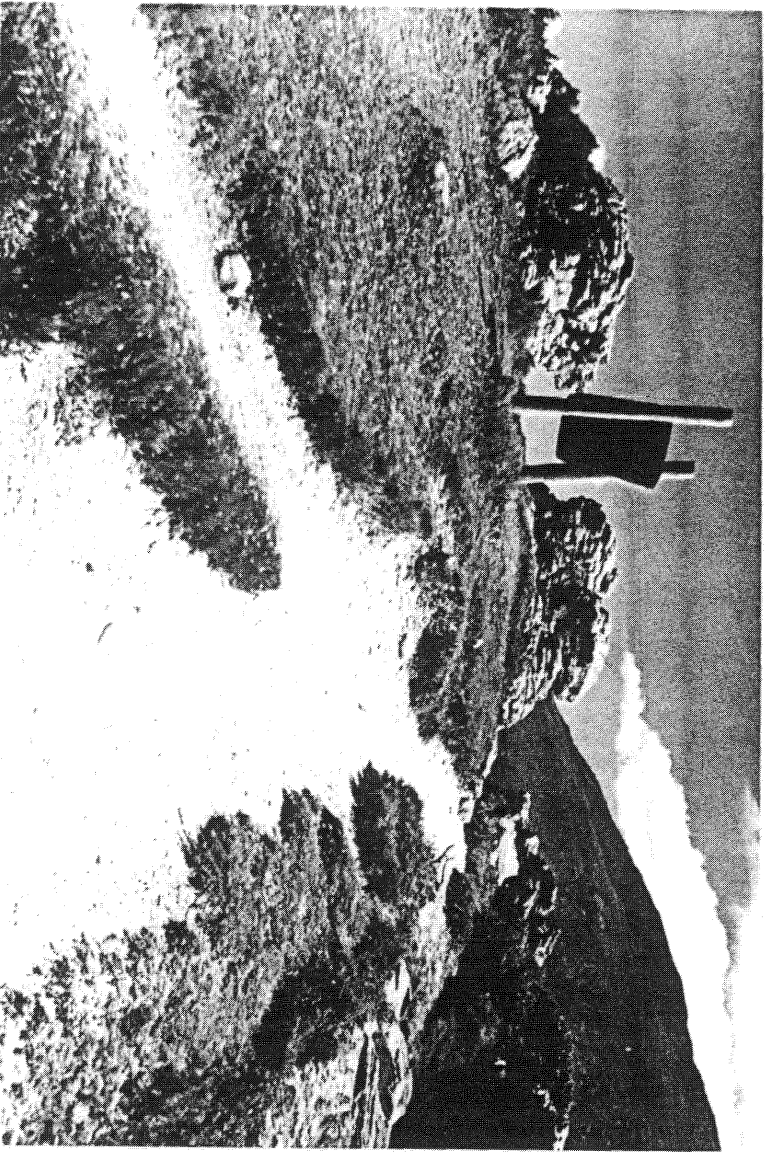


Figure 3. Archaeological study, Stony Point, Betty's Bay. Stony Point I.



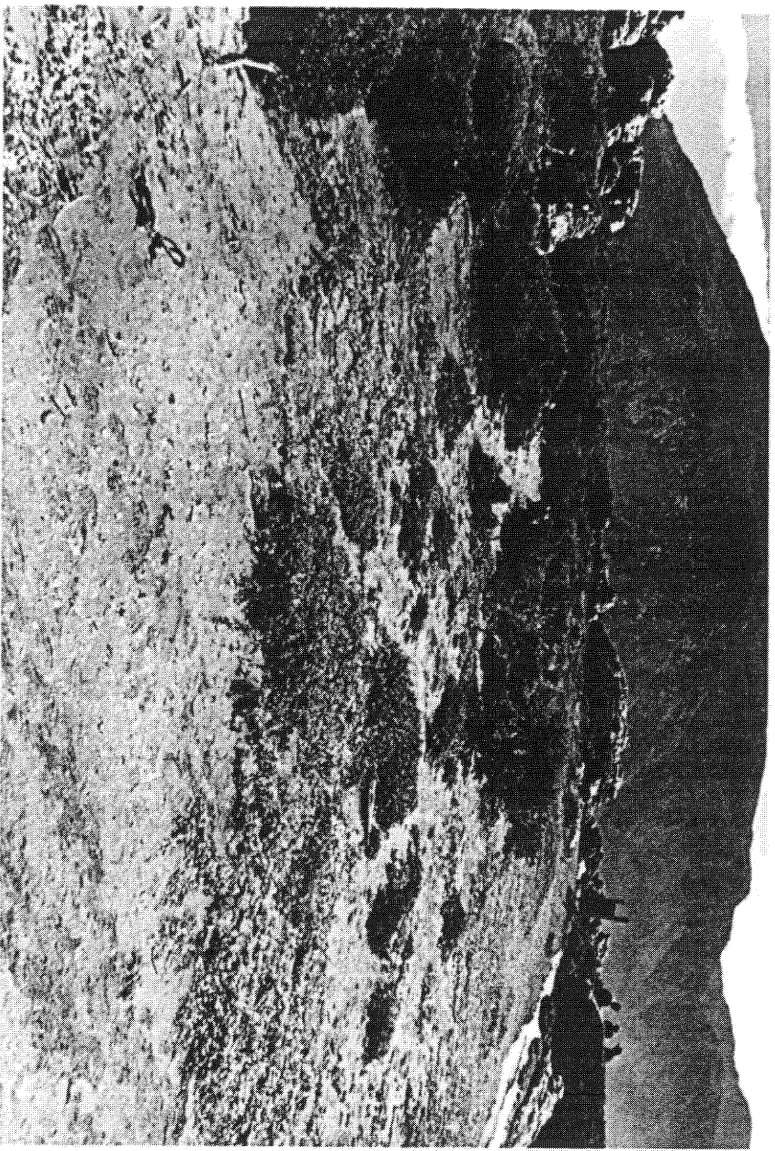


Figure 4. Archaeological study, Stony Point, Betty's Bay. Stony Point I.

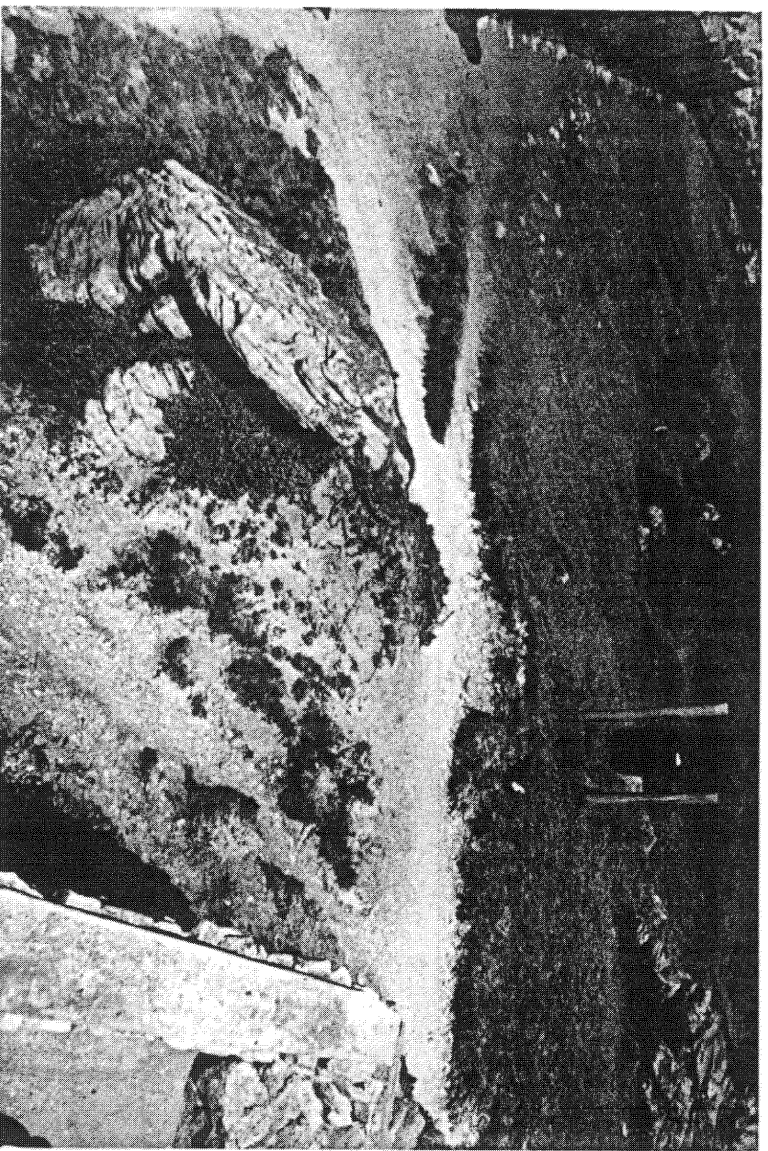


Figure 5. Archaeological study, Stony Point, Betty's Bay. Stony Point I.

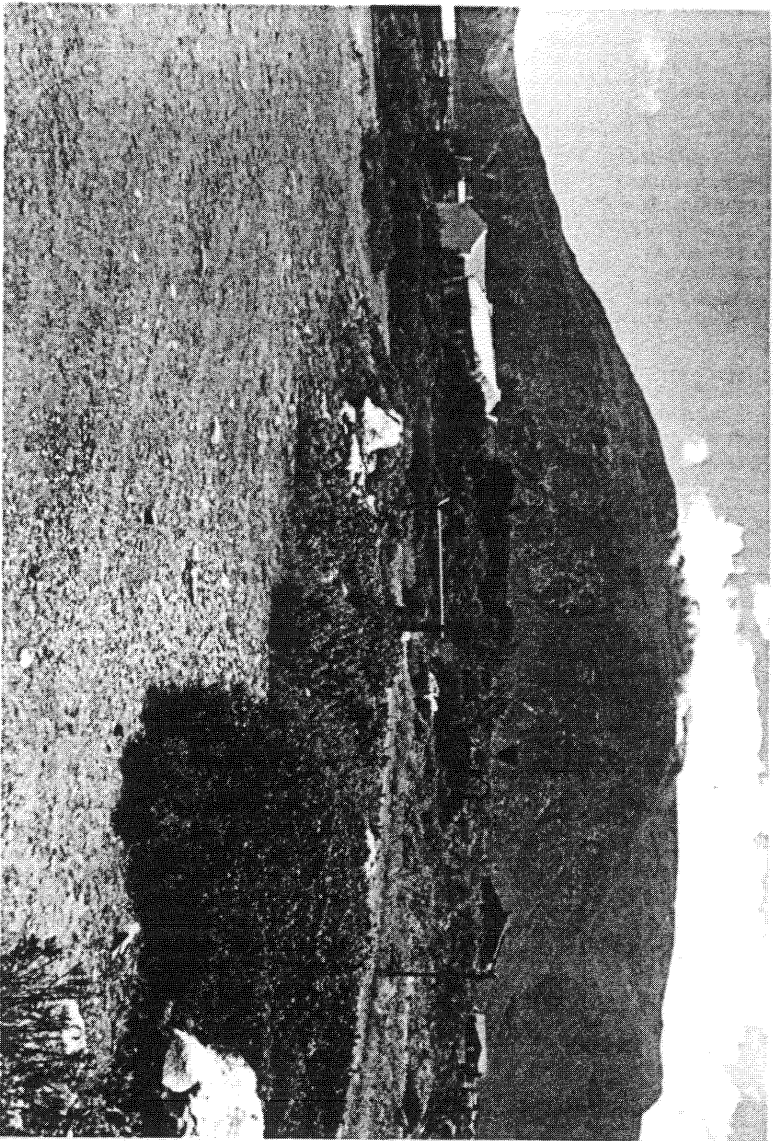


Figure 6. Archaeological study, Stony Point, Betty's Bay. Stony Point 2. Arrow indicates location of the site.

## **8. IMPACT STATEMENT**

On Erf2411

The proposed development of the whaling museum complex at Stony Point will not impact on any precolonial archaeological sites.

On Erf2412

Proposed upgrading of the footpaths at the penguin viewing site will impact negatively on the shell midden. The midden has, however, already been severely damaged by the footpath and by construction of the penguin-viewing site.

## **9. CRITERIA USED IN THE EVALUATION OF ARCHAEOLOGICAL SITES**

The criteria used in evaluating the importance of archaeological sites at Stony Point include the following:

- the state of preservation of the site;
- the range and density of cultural material present on the site;
- the type of site; for example cave, shell midden, open air site;
- the approximate age of the site;
- rarity of occurrence; and
- regional, national and international importance

## **10. LEGISLATION**

Archaeological sites and buildings, structures and features older than 60 years old are protected under the National Heritage Resources Act (No. 25 of 1999). The Act came into effect on 01 April 2000, and replaces the National Monuments Act (No. 28 of 1969).

It is an offence to destroy, damage, excavate, alter, or remove from its original position, or collect, any archaeological material, without a permit issued by the South African Heritage Resources Agency (SAHRA).

## 11. RECOMMENDATIONS

With regard to the proposed Stony Point Whaling Museum development, the following archaeological recommendations are made.

1. The exposed edges of the shell midden at the penguin-viewing site should be stabilised, possibly by backfilling and vegetated. This will reduce any further erosion of the midden.
2. Visitors to the penguin colony should stay on the existing footpaths and keep off the shell midden.
3. The footpath should not be widened further in any way that will impact negatively on the midden.
4. It would be preferable to rehabilitate the existing footpath and to construct a raised boardwalk on the seaward site of the footpath.
5. Proposed upgrading of the penguin-viewing site may impact further on the shell midden. Proposals relating to the upgrading must be assessed by a professional archaeologist.
6. Interpretative signage relating to the shell midden and the precolonial history of Stony Point should be developed in consultation with a professional archaeologist, or the South African Heritage Resources Agency.
7. The South African Heritage Resources Agency should be consulted at all stages of planning for the proposed whaling museum development.
8. Protection of the shell midden adjacent to the car park should be included in the Stony Point Environment Management Plan. Proposals for future upgrading of the car must be assessed by a professional archaeologist.

The above recommendations are subject to the approval of the South African Heritage Resources Agency Plans Committee

## 12. REFERENCES

- Erasmus, D. 2000. Stony Point, Betty's Bay. Application to authorisation to develop in terms of the Environmental Conservation Act (73 of 1989). Draft Scoping Report. Diane Erasmus Environmental Services.
- Halkett, D. 1989. An initial historical study of whaling activities at Stony Point, Betty's Bay. Report prepared for Hangklip-Kleinmond Municipality. Archaeology Contracts Office, University of Cape Town.