

GOBUS DREYER
Pr. Archaeologist/Heritage Specialist

P.O. Box 12910
BRANDHOF 9324
Bloemfontein
dreyerj@telkomsa.net

Tel: 051-444 1187
Fax: 051-444 4395
Cell: 083 357 7982

12 DECEMBER 2006

**FIRST PHASE ARCHAEOLOGICAL AND CULTURAL HERITAGE
ASSESSMENT OF THE ROUTE AND BORROW PITS FOR THE
PROPOSED NEW ROAD (GP87) BETWEEN
RIETFontein & Groot Mier,
GORDONIA DISTRICT, NORTHERN CAPE**

EXECUTIVE SUMMARY

A new R 31 (GP87) road is planned between Rietfontein and Groot Mier, Gordonia District, Northern Cape. The road will mostly follow the route of the existing power line. Road developments will, therefore, include an alternative route with borrow pits.

Cultural and historic material is totally absent from the area and the developments will have no impact on any cultural or historical material.

I recommend that the proposed developments and planning of the sites may proceed.

INTRODUCTION AND DESCRIPTION

INVESTIGATION

The new R31 road (GP87) between Rietfontein and Groot Mier, Gordonia District, Northern Cape, will mostly follow the existing power line. The new route and borrow pits were investigated on 13 September 2003 in the company of Dr. Johan .du Preez of MDA Environmental Consultants, Bloemfontein.

The area was examined for possible archaeological and historical material and to establish the potential impact on any cultural material that might be found. The Heritage Impact Assessment (HIA) is done in terms of the National Heritage Resources Act (NHRA), (25 of 1999) and under the Environmental Conservation Act, (73 of 1989).

LOCALITY

The new R31 road (GP87) between Rietfontein and Groot Mier, Gordonia District, Northern Cape, will mostly follow the existing power line (Map 1). The road will cross the Haakskeenpan (Fig.15).

The developments will include a new route and borrow pits.

The following GPS coordinates (Cape scale) were taken:

RIETFONTein BORDER POST	26°44'42"S 020°02'37"E	Altitude 829m (Figs.1&2).
BP 1 F	26°44'19"S 020°02'56"E	Altitude 835m (Fig.3).
1 Km Red Flag	26°44'26"S 020°03'49"E	Altitude 830m (Fig.4).
WHITE STONES	26°44'34"S 020°04'01"E	Altitude 830m (Fig.5).
WHITE STONES (MR 121)	26°44'32"S 020°04'36"E	Altitude 828m (Fig.6).
BP 2 G	26°44'32"S 020°05'46"E	Altitude 823m. (Fig. 7).
BP 3 H	26°44'23"S 020°06'24"E	Altitude 820m (Fig.8).
BP 4 Ha	26°44'19"S 020°06'45"E	Altitude 820m.
KLEIN MIER	26°44'07"S 020°15'57"E	Altitude 838m (Fig.9).
I	26°43'57"S 020°16'36"E	Altitude 845m (Fig.10).
J	26°44'30"S 020°18'22"E	Altitude 836m (Fig.11).
K	26°44'07"S 020°16'07"E	Altitude 840m (Fig.12).
Rd JUNCTION	26°44'38"S 020°18'51"E	Altitude 833m (Fig.13).
205.0 Km	26°51'37"S 020°29'08"E	Altitude 861m (Fig.14).

RESULTS

The investigation did not produce any stone flakes or other cultural or historical material.

IMPACT ASSESSMENT

The proposed developments along the R R31 road (GP87) road between Rietfontein and Groot Mier, Gordonia District, Northern Cape, will have no effect on any cultural or historical material.

RECOMMENDATIONS

There are no obvious reasons to delay the commencement of further planning and development of the borrow pits and I recommend that the work may proceed.

MITIGATION

Concerning the areas for the proposed developments, no mitigation measures will be required.

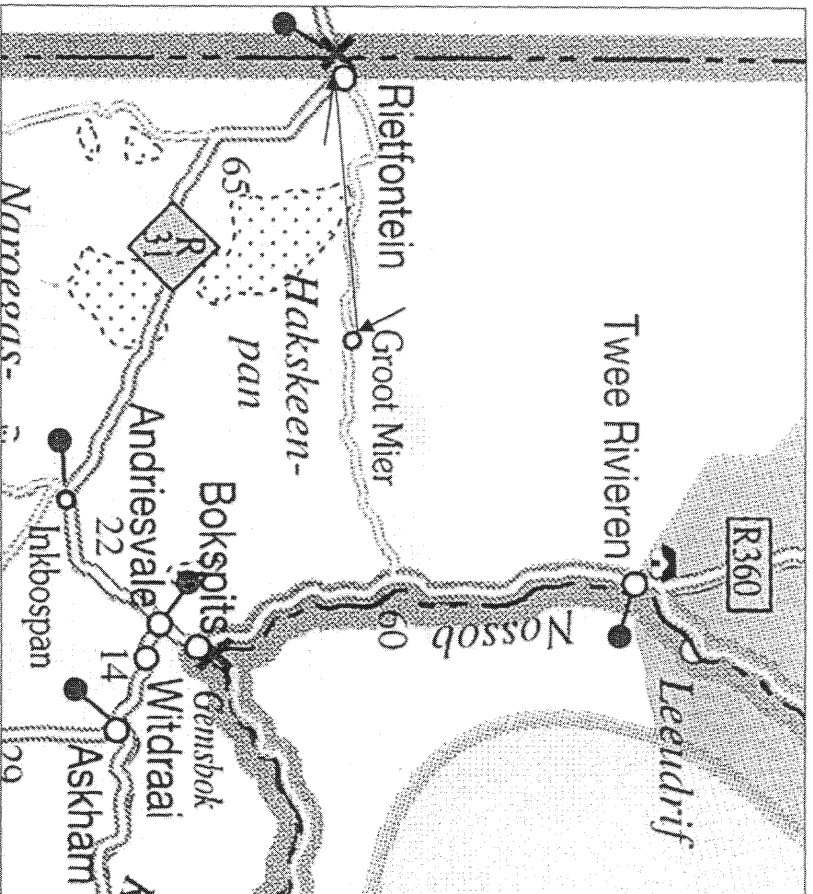
ACKNOWLEDGEMENTS

I thank Dr Johan du Preez from MDA Environmental Consultants, Bloemfontein, for taking me to the site.

SELECT BIBLIOGRAPHY:

- BEAUMONT, P.B. & VOGEL, J.C. 1989. Patterns in the age and context of rock art in the Northern Cape. *South African Archaeological Bulletin* 44(150):73-81.
- BEAUMONT, P.B., SMITH, A.B. & VOGEL, J.C. 1995. Before the Einiqua: the archaeology of the frontier zone. In Smith, A.B. (Ed.). *Einiqualand: Studies of the Orange River Frontier*. Cape Town: University of Cape Town Press.
- DEACON, J. 1992. *Archaeology for Planners, Developers and Local Authorities*. Cape Town: National Monuments Council.
- HUMPHREYS, A.J.B. 1986. *Searching for the past*. Cape Town: David Phillip.
- MORRIS, D. 1988. Engraved in place and time: a review of variability in the rock art of the Northern Cape and Karoo. *South African Archaeological Bulletin* 43(148):109-121.
- MORRIS, D. 1990a. 'Etchings' and 'Intaglios' in the Upper Karoo: Part 1: The engravings at Springbok Oog. In Beaumont, P.B. & Morris, D. *Guide to archaeological sites in the Northern Cape*. Kimberley: McGregor Museum.
- MORRIS, D. 1990b. 'Etchings' and 'Intaglios' in the Upper Karoo: Part 2: Engravings on Jagtpan and adjacent farms. In Beaumont, P.B. & Morris, D. *Guide to archaeological sites in the Northern Cape*. Kimberley: McGregor Museum.
- PISTORIUS, J.C.C. 1994. *Eskom Archaeological Site Identification Guide*. Johannesburg: Eskom.
- ROSENTHAL, E. *The River of Diamonds*.
- SMITH, A.B. (Ed.). 1995. *Einiqualand: Studies of the Orange River Frontier*. Cape Town: UCT Press.
- SOHNGE, P.G. VISSER, D.J.L. AND VAN RIET LOWE, C. 1937. *The geology and archaeology of the Vaal River Basin*. Pretoria: Government Printer.

LIST OF ILLUSTRATIONS



Map 1 Red line indicates the proposed R31 road between Groot Mier and Rietfontein, Gordonia District, Northern Cape.



Fig. 1 The border post at Rietfontein.

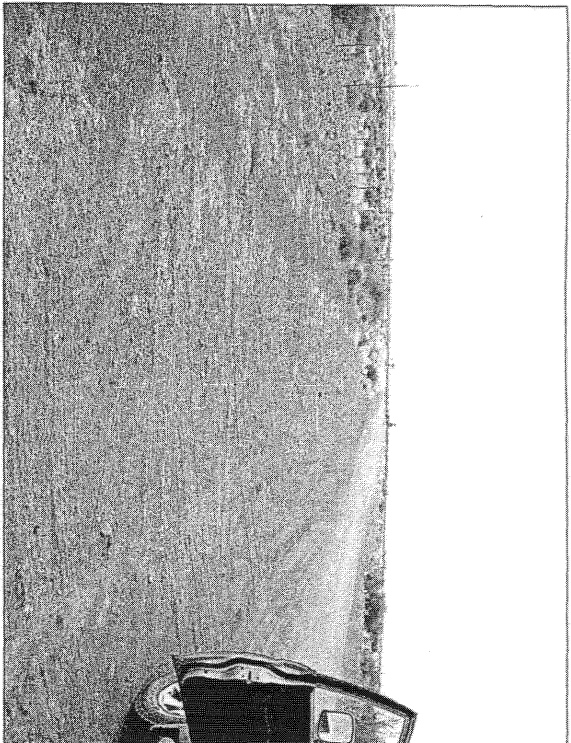


Fig 2 Facing away from the Rietfontein border post.



Fig 3 BP 1 F on the road from Rietfontein to Groot Mier, Gordonia District.

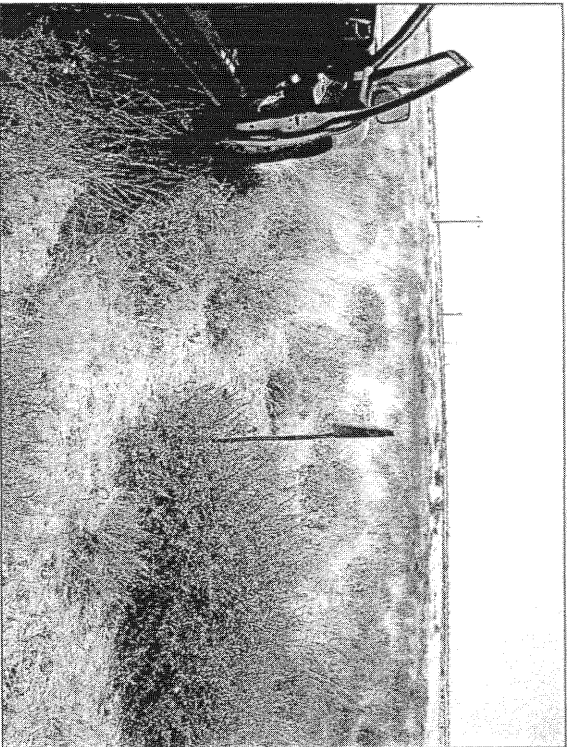


Fig.4 1 Km Red Flag.



Fig.5 WHITE STONES.



Fig 6 WHITE STONES (MR 121).



Fig 7 BP 2 G.

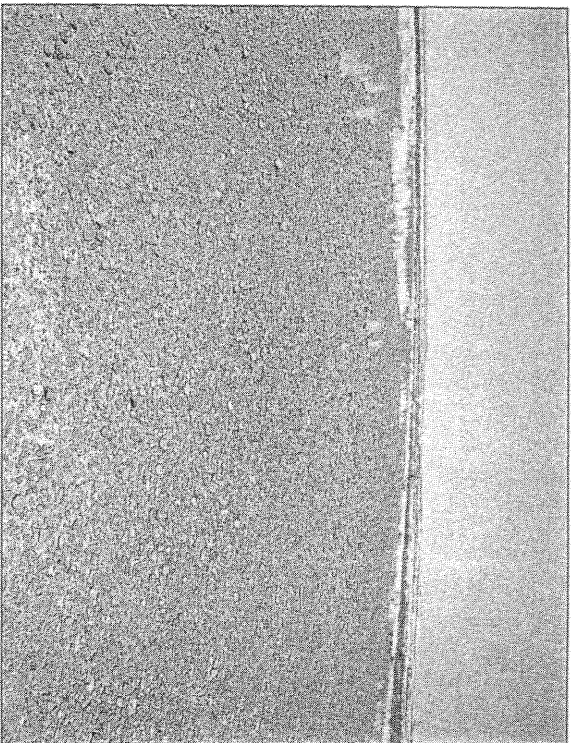


Fig. 8 BP 3 H.

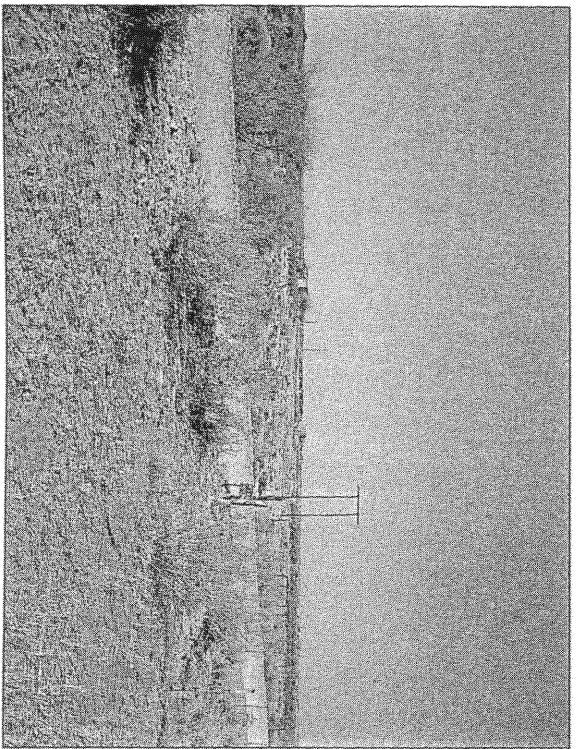


Fig. 9 KLEIN MIER.

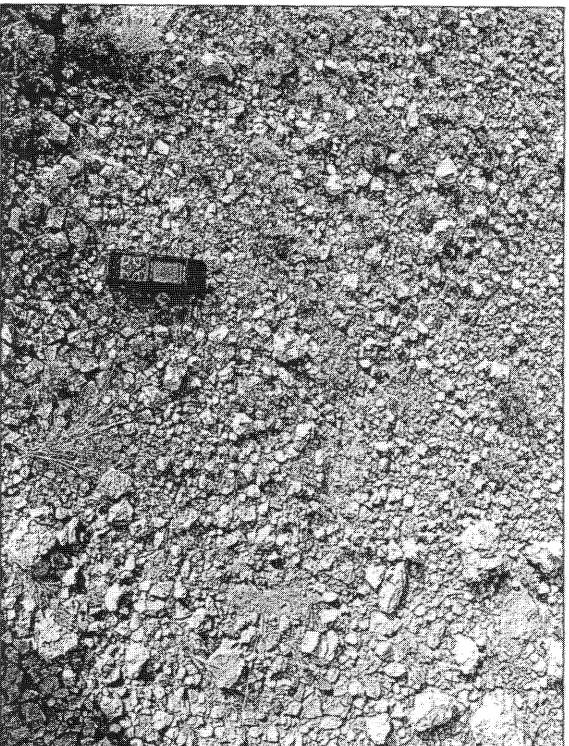


Fig.10 BP.I.

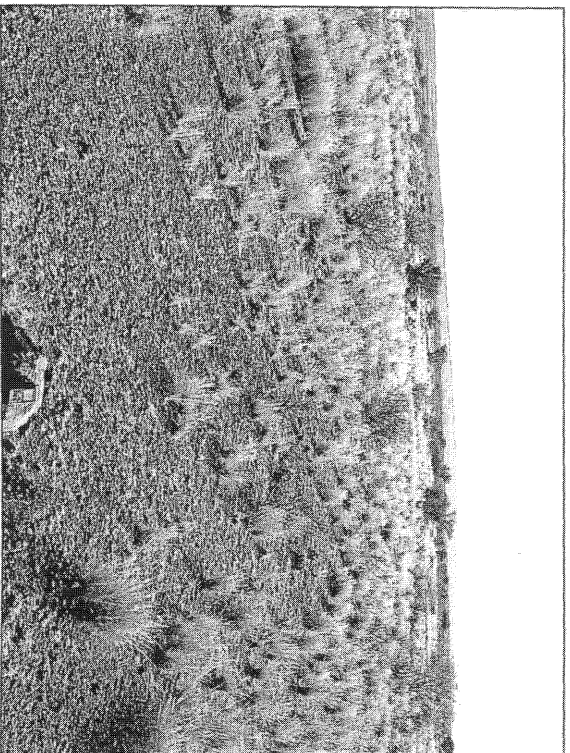


Fig.11 BP.J.

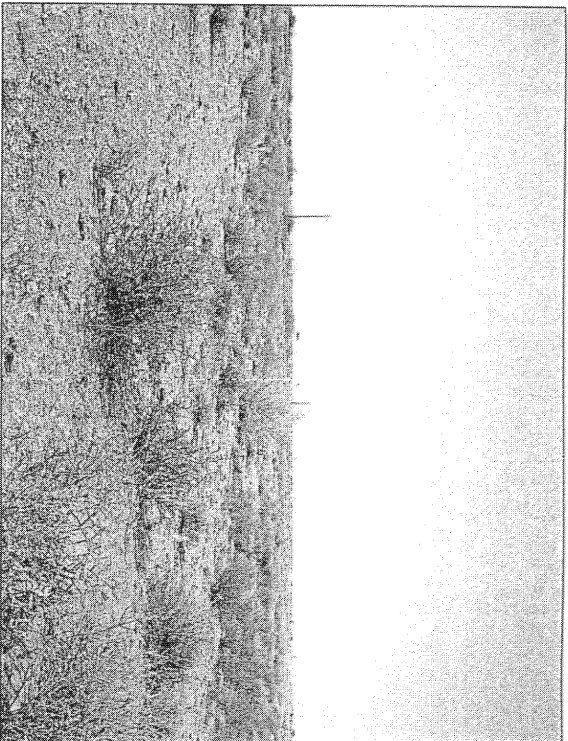


Fig.12 B.P.K.

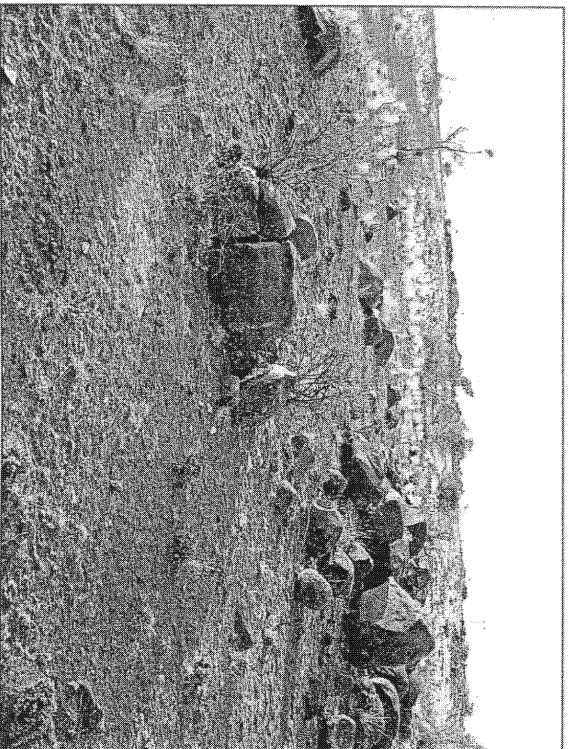


Fig.13 Road junction. Note the dolerite outcrop.

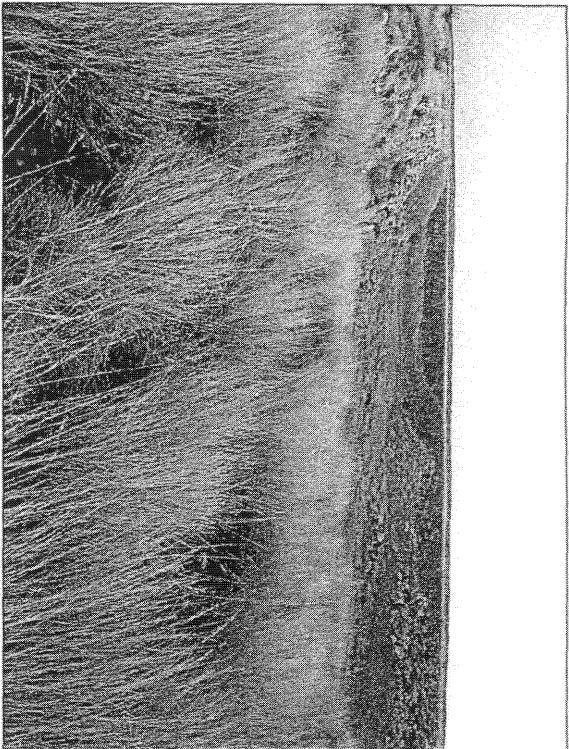


Fig.14 BP 205,0 Km.

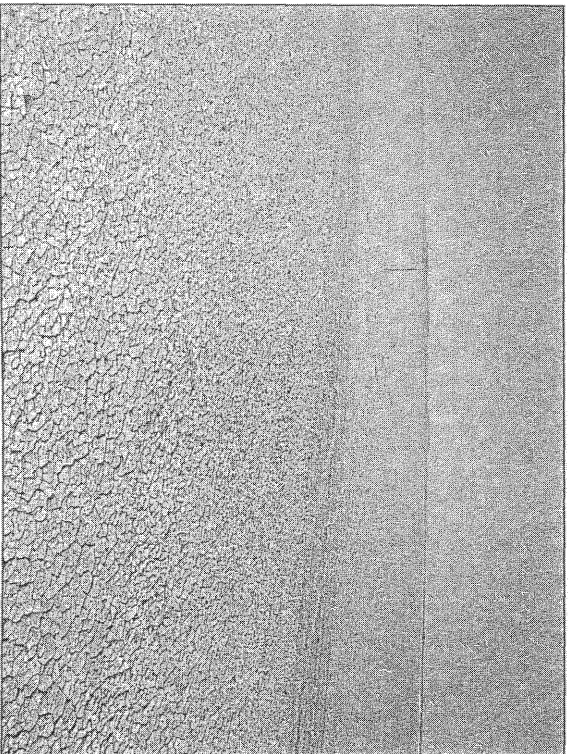


Fig.15 General view of Haakskeenpan.