

**COBUS DREYER**

**Pr. Archaeologist/Heritage Specialist**

P.O. Box 12910  
BRANDHOF 9324  
Bloemfontein  
dreyerj@telkomsa.net

Tel: 051-444 1187  
Fax: 051-444 4395  
Cell: 083 357 7982

12 SEPTEMBER 2007

**FIRST PHASE ARCHAEOLOGICAL AND CULTURAL HERITAGE  
ASSESSMENT OF BORROW PIT R ALONG THE PROPOSED R87  
ROAD BETWEEN RIETFONTEIN & GROOT MIER,  
GORDONIA DISTRICT, NORTHERN CAPE**

**EXECUTIVE SUMMARY**

A new R 31 (GP87) road is planned between Rietfontein and Groot Mier, Gordonia District, Northern Cape. The road will mostly follow the route of the existing power line. Road developments will, therefore, include an alternative route with new borrow pits. An additional borrow pit R was examined.

Cultural and historic material in the form of sparsely scattered stone flakes and cores were found in two areas. The occurrence seems to be a general scatter, without any major significance. It is therefore concluded that the developments will have a limited impact on the cultural material.

I recommend that the proposed developments and planning of the site may proceed.

**INTRODUCTION AND DESCRIPTION**

**INVESTIGATION**

The new R31 road (Trund R87) between Rietfontein and Groot Mier, Gordonia District, Northern Cape, will mostly follow the existing power line (Map 1). The locality of Borrow Pit R in relation to Rietfontein, Loubos and a range of borrow pits is indicated on Map 2. The new route and borrow pits were investigated on 13 September 2006 in the company of Dr. Johan du Preez of MDA Environmental Consultants, Bloemfontein. An additional borrow pit R was investigated on 8 June 2007.

The area was examined for possible archaeological and historical material and to establish the potential impact on any cultural material that might be found. The Heritage Impact Assessment (HIA) is done in terms of the National Heritage Resources Act (NHRA), (25 of 1999) and under the Environmental Conservation Act, (73 of 1989).

## LOCALITY

The new R31 road (Trund R87) between Rietfontein and Groot Mier, Gordonia District, Northern Cape, will mostly follow the existing power line (Map 1). The road will cross the Haakskeenpan (Fig.15).

The developments will include a new route and borrow pits.

The following GPS coordinates (Cape scale) were taken:

BPR A	26°44'03"S 020°02'24"E	Altitude 837m (Figs.).
BPR B	26°44'01"S 020°02'19"E	Altitude 838m (Fig.3).
LBA	26°44'28"S 020°05'00"E	Altitude 827m (Fig.4).
LBB	26°43'56"S 020°04'52"E	Altitude 829m (Fig.5).
LBC	26°43'52"S 020°04'43"E	Altitude 831m (Fig.6).

## RESULTS

Cultural and historic material in the form of sparsely scattered stone flakes and cores were found in two areas at Borrow Pit R Point B and near Point LBA and LBC along the entrance road from Loubos.

## IMPACT ASSESSMENT

The occurrence of stone flakes and cores seems to be a general scatter, and I conclude that the proposed developments along the R R31 road (GP87) road between Rietfontein and Groot Mier, will have a limited impact on the cultural material.

## **RECOMMENDATIONS**

The scattered lithic material seems to be a general occurrence and of no major significance. I recommend that the further planning and development of the borrow pit may proceed.

## **MITIGATION**

Concerning the areas for the proposed developments, no mitigation measures will be required.

## **ACKNOWLEDGEMENTS**

I thank Dr Johan du Preez from MDA Environmental Consultants, Bloemfontein, for taking me to the site. We also thank Loffie Burger and Johan van Biljon for showing us the site.

**SELECT BIBLIOGRAPHY:**

DEACON, J. 1992. Archaeology for Planners, Developers and Local Authorities. Cape Town: National Monuments Council.

HUMPHREYS, A.J.B. 1986. Searching for the past. Cape Town: David Philip.

MORRIS, D. 1988. Engraved in place and time: a review of variability in the rock art of the Northern Cape and Karoo. South African Archaeological Bulletin 43(148):109-121.

MORRIS, D. 1990a. 'Etchings' and 'Intaglios' in the Upper Karoo: Part 1: The engravings at Springbok Oog. In Beaumont, P.B. & Morris, D. Guide to archaeological sites in the Northern Cape. Kimberley: McGregor Museum.

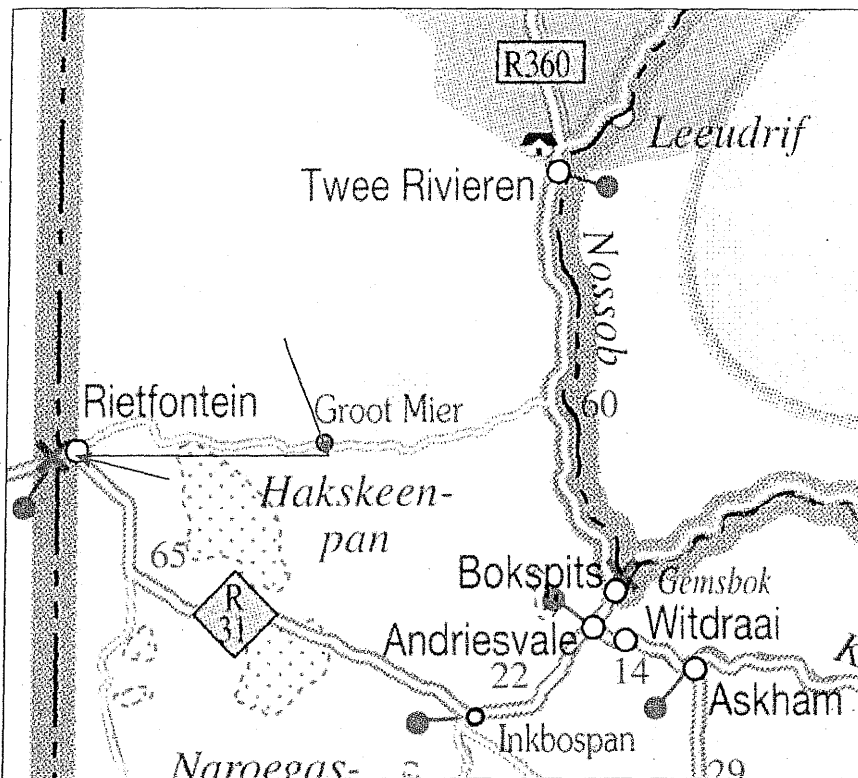
MORRIS, D. 1990b. 'Etchings' and 'Intaglios' in the Upper Karoo: Part 2: Engravings on Jagtpan and adjacent farms. In Beaumont, P.B. & Morris, D. Guide to archaeological sites in the Northern Cape. Kimberley: McGregor Museum.

PISTORIUS, J.C.C. 1994. Eskom Archaeological Site Identification Guide. Johannesburg: Eskom.

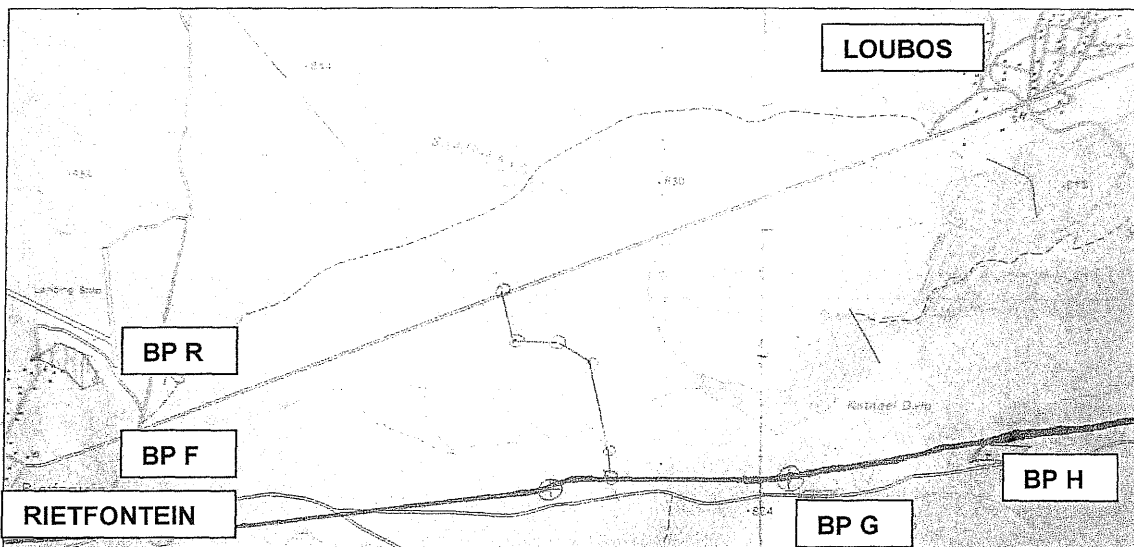
SMITH, A.B. (Ed.). 1995. Einiqualand: Studies of the Orange River Frontier. Cape Town: UCT Press.

SOHNGE, P.G. VISSER, D.J.L. AND VAN RIET LOWE, C. 1937. The geology and archaeology of the Vaal River Basin. Pretoria: Government Printer.

LIST OF ILLUSTRATIONS



Map 1 Red line indicates the proposed R31 road between Groot Mier and Rietfontein, Gordonia District, Northern Cape.



Map 2 Locality of BP R in relation to Rietfontein, Loubos and other borrow pits.



Fig. 1 The border post at Rietfontein.

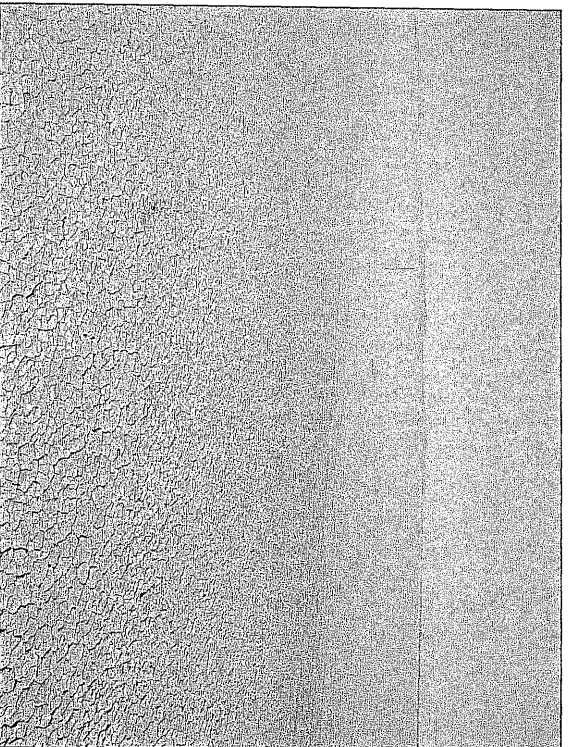


Fig. 15 General view across Haakskeepan.

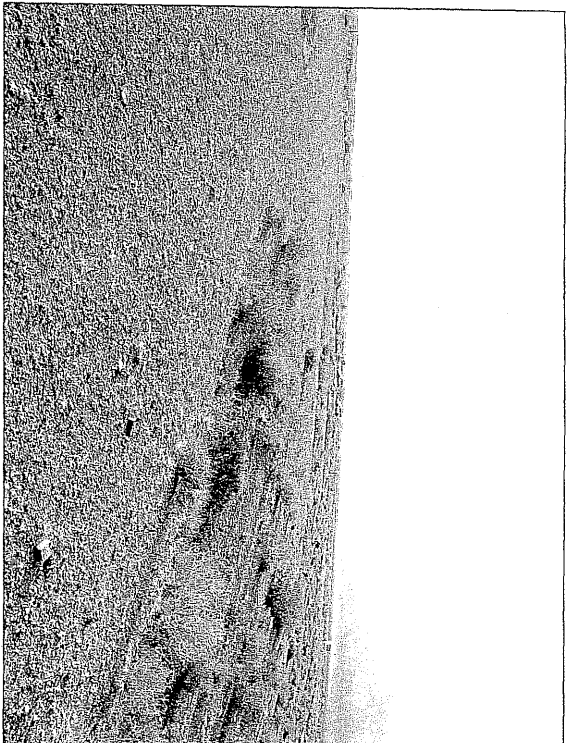


Fig. 2 Borrow Pit R Point A.



Fig. 3 Borrow Pit R Point B.

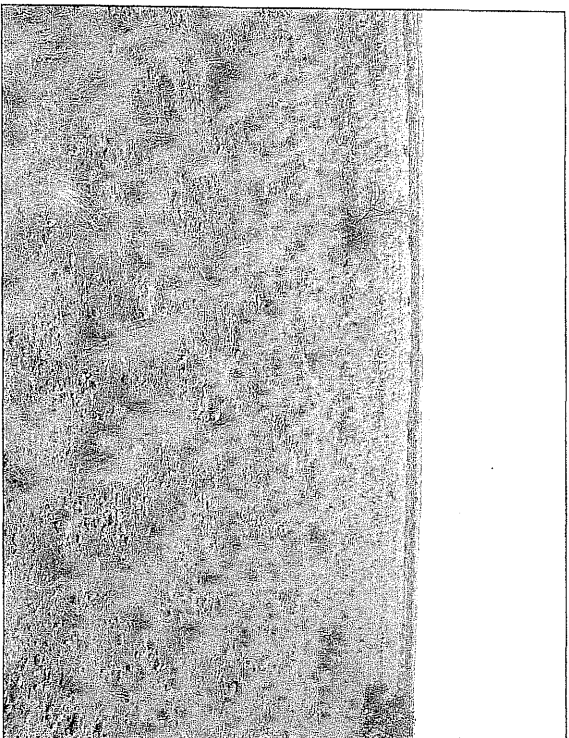


Fig 4 Entrance road from Loubos. Point LBA.

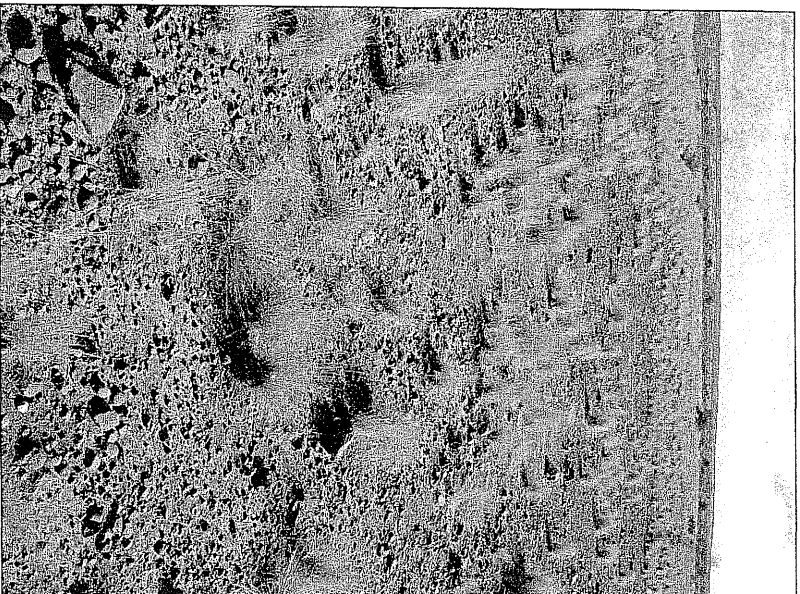


Fig.5 Point A on Loubos entrance road.



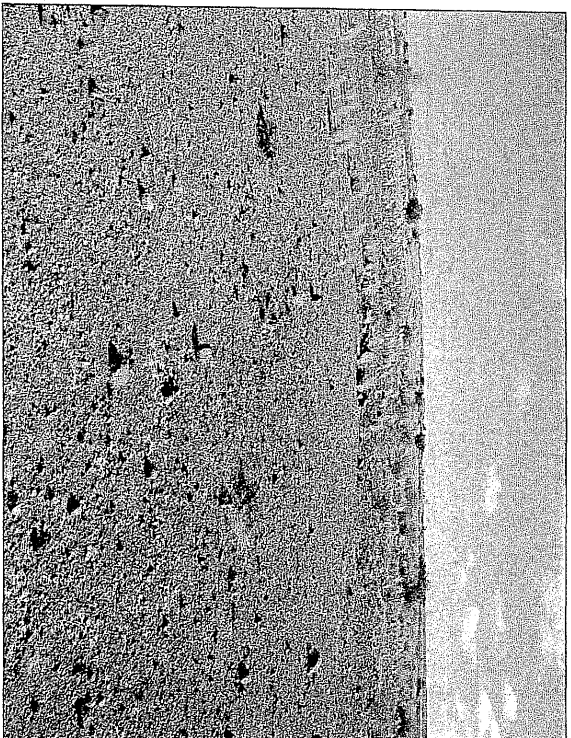


Fig.6 Point B on Loubos entrance road.

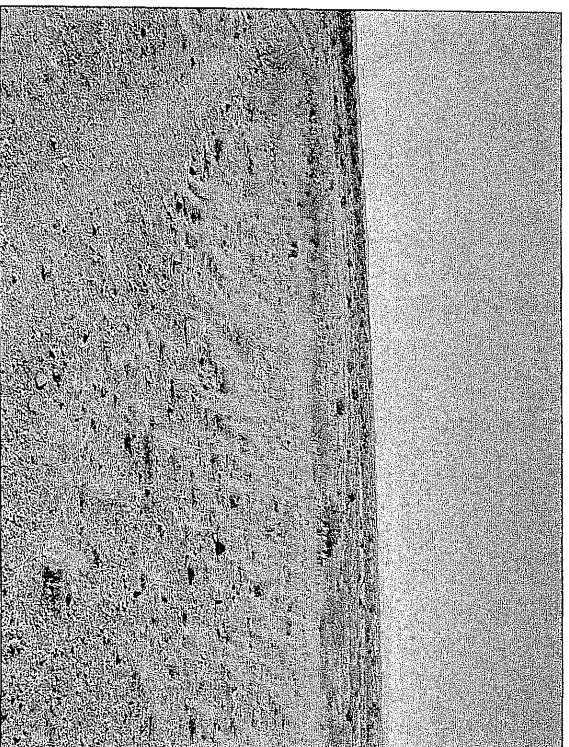


Fig.7 Point C on entrance road from Loubos.

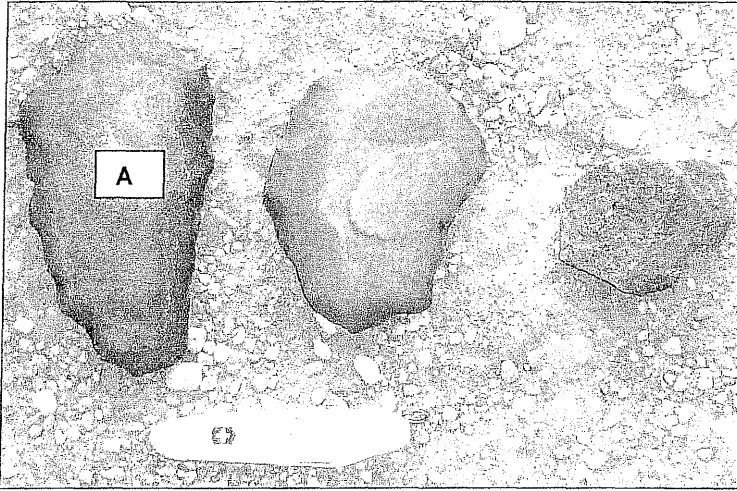


Fig.8 Crude and weathered stone tools found near Point BPR B (Pocket knife = 83mm).



Fig.9 Winding edge of stone tool A (Fig.8) found near Point BPR B.



Fig.10 Stone cores found near Point BPR B. (Pocket knife = 83mm).

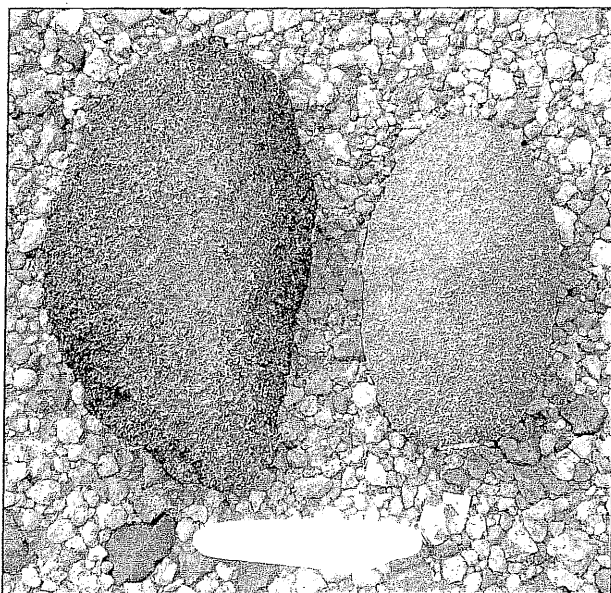


Fig.11 Stone flakes found near Point BPR B. (Pocket knife = 83mm).

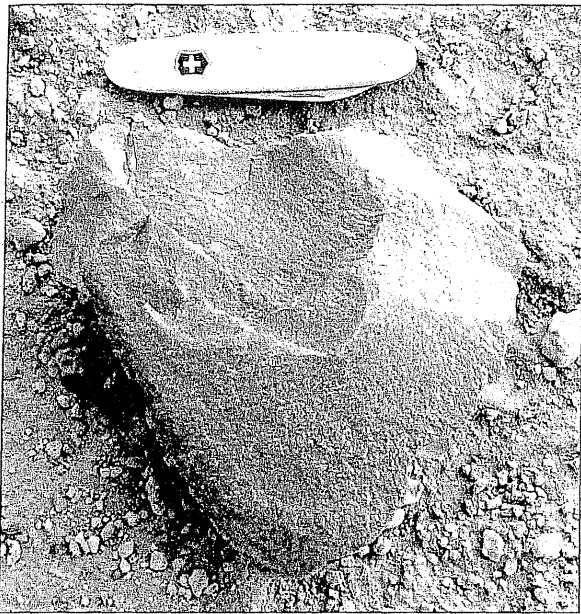


Fig.12 Stone core from near Point LBA along the entrance road from Loubos. (Pocket knife = 83mm).

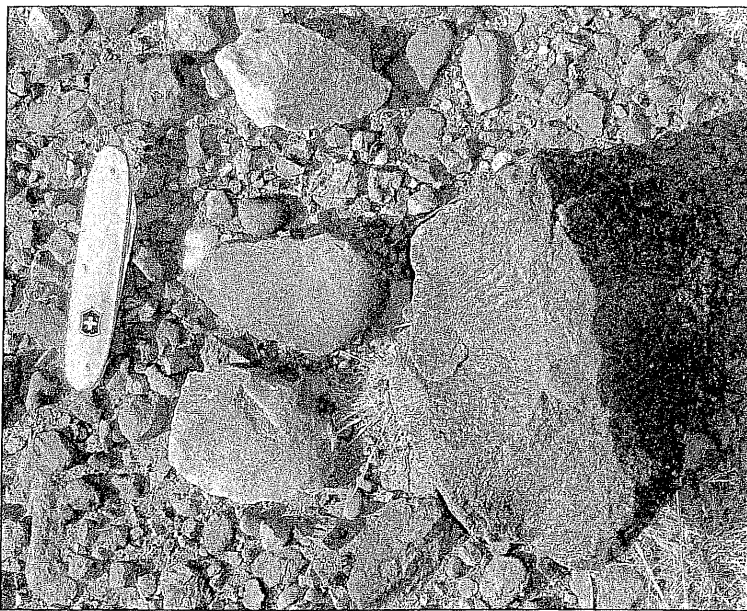


Fig.13 Flakes and core found near Point LBA. (Pocket knife = 83mm).

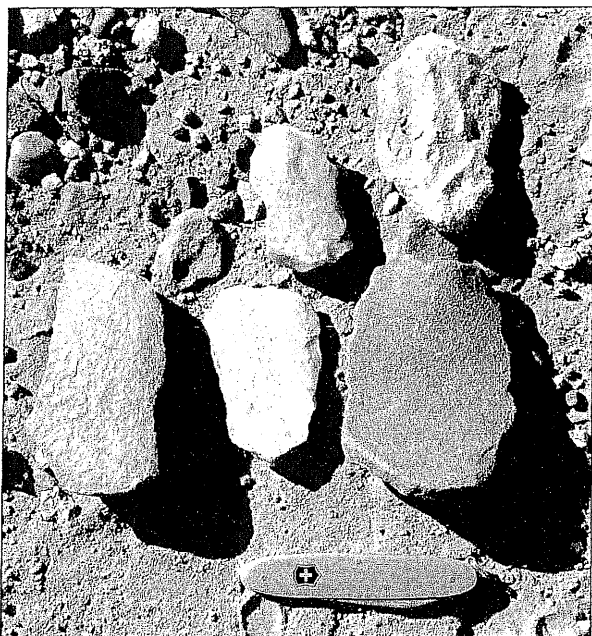


Fig.14 Stone flakes found near Point LBA. (Pocket knife = 83mm).



Fig.15 Core with fitting flake found near Point LBC along the Loubos entrance road.