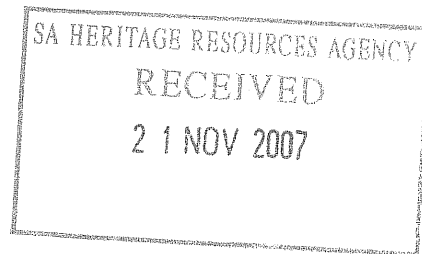


**PHASE 1 HERITAGE IMPACT ASSESSMENT REPORT ON A 50 HA
PORTION OF STEYNMOND BOERDERY ON THE KAKAMAS NORTH
FARM 339 IN THE SIYANDA DISTRICT MUNICIPALITY OF THE
NORTHERN CAPE PROVINCE.**

Peter B Beaumont

c/o Archaeology Department
McGregor Museum
PO Box 316
8300 Kimberley
Tel 053 - 842 0986 or 053 - 839 2700
Fax 053 - 842 1433
e-mail se@museumsnc.co.za



CONSULTANT

Marquerite Geldenhuys

MEG Environmental Impact Studies

Tweedelaan 13
Oosterville
8801 Upington
Tel 054 - 332 2781
Fax 054 – 332 2781
e-mail megois@intekom.co.za

24 October 2007

EXECUTIVE SUMMARY

The purpose of this study was to establish if any heritage sites were present on an undeveloped 50 ha portion of Steynmond Boerdery on the Kakamas North farm 339, some 7 km north of Kakamas, in the Siyanda District Municipality of the Northern Cape. A 1.5 hour – long foot survey of sparsely vegetated red sands sloping up to Poort se Berg hills to the east produced no artefacts, fossil bones or graves of any age. It is consequently considered that this terrain has no heritage potential and that its proposed use for the growing of *Hoodia gordonii* will have no impact on the heritage resources of the Northern Cape.

BACKGROUND INFORMATION

Steynmond Boerdery plan to diversify by planting *Hoodia gordonii* on a presently undeveloped 50 ha portion of their farming operations on the Kakamas North farm 339.

This report is part of an EIA that is being prepared by M Geldenhuys of MEG Environmental Impact Studies on behalf of the farm owner, Mr Johan Klopper.

LOCAL ARCHAEOLOGY

Just west of Kakamas is Renosterkop, a hill with Older Gravel vestiges, as also a number of herder localities, that were examined by D Morris and the author in the 1990's. And ~40 km to the east, on the farm Zoovoorby 458, there are specularite workings and a nearby cave that Andy Smith investigated in 1980 (Beaumont, Smith & Vogel 1995).

PROPERTY DESCRIPTION

The examined 50 ha portion of Steynmond Boerdery on the Kakamas North farm 339 lies some 7 km north of Kakamas in the Siyanda District Municipality of the Northern Cape (Figs. 1 & 2). This ground, sparsely covered by grass and bushes, slopes up gradually to the north – east from a south – west edge with co – ordinates of 28° 43' 18.1" S, 20° 36' 27.4" E (Figs. 3 & 4). Over 1.5 hrs was spent walking over its full extent on the afternoon of Wednesday 10 October 2007 in the company of Marquerite Geldenhuys and Anton Meyer of DTEC.

SUPERFICIAL GEOLOGY

No sections were seen, but it is probable that the surface red aeolian sands lie directly on the Precambrian schists that outcrop to the east in the form of Poort se Berg footslopes.

HERITAGE FINDINGS

My search showed that this ground is bereft of artefacts, fossil bones, or graves of any age.

CONCLUSIONS

My conclusion is therefore contains no heritage material and that its use for *Hoodia* production will have no impact on the heritage resources of the Northern Cape.

REFERENCES

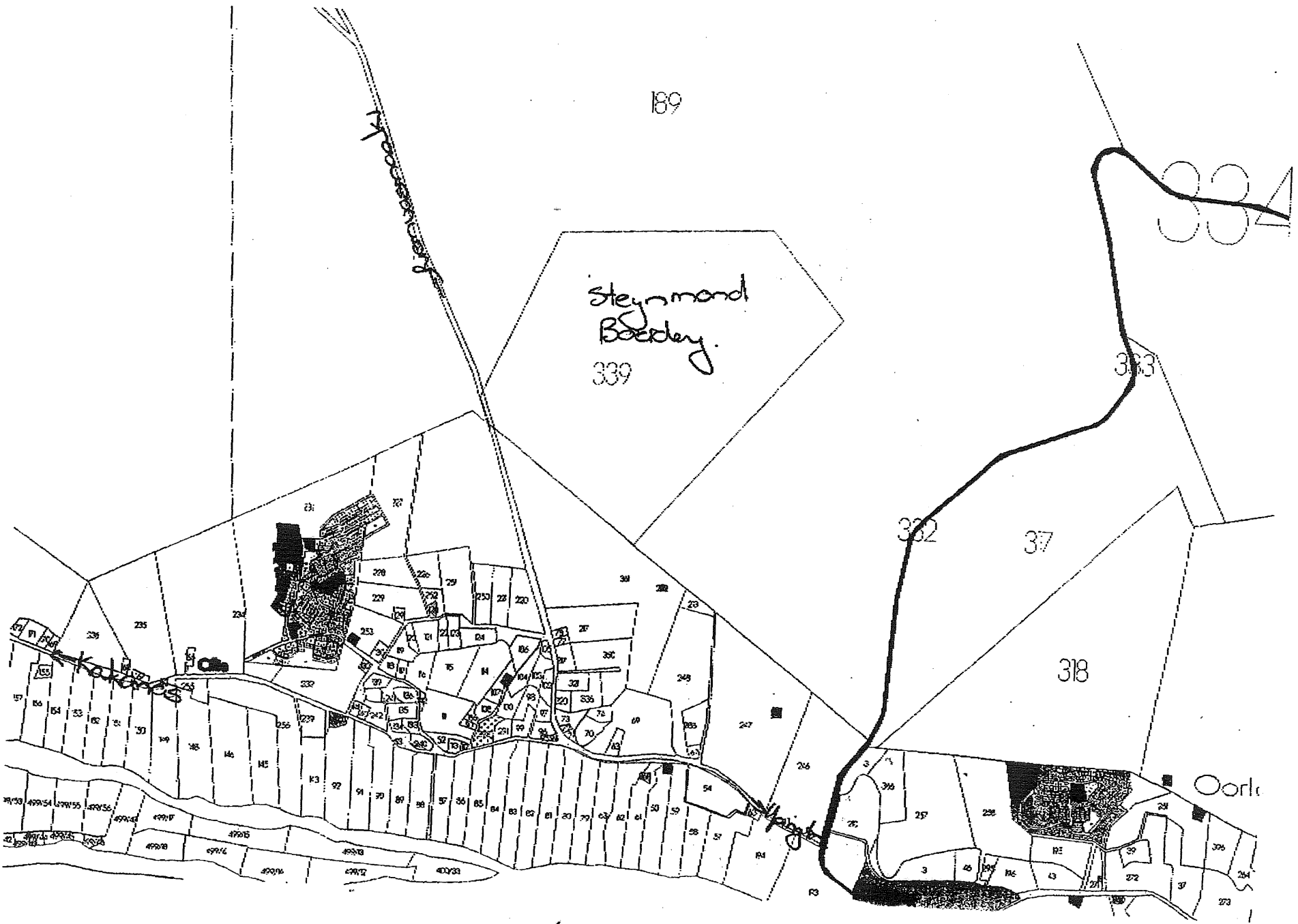
Beaumont, P.B., Smith A.B. & Vogel, J.C. 1995. *Before the Einiqua: The Archaeology of the Frontier Zone*. In A.B. Smith (ed.) *Einiqualand*, pp. 236 – 264. Rondebosch: UCT Press.

Fig 1. 2820 DA Marchand



Fig 2.

3-4



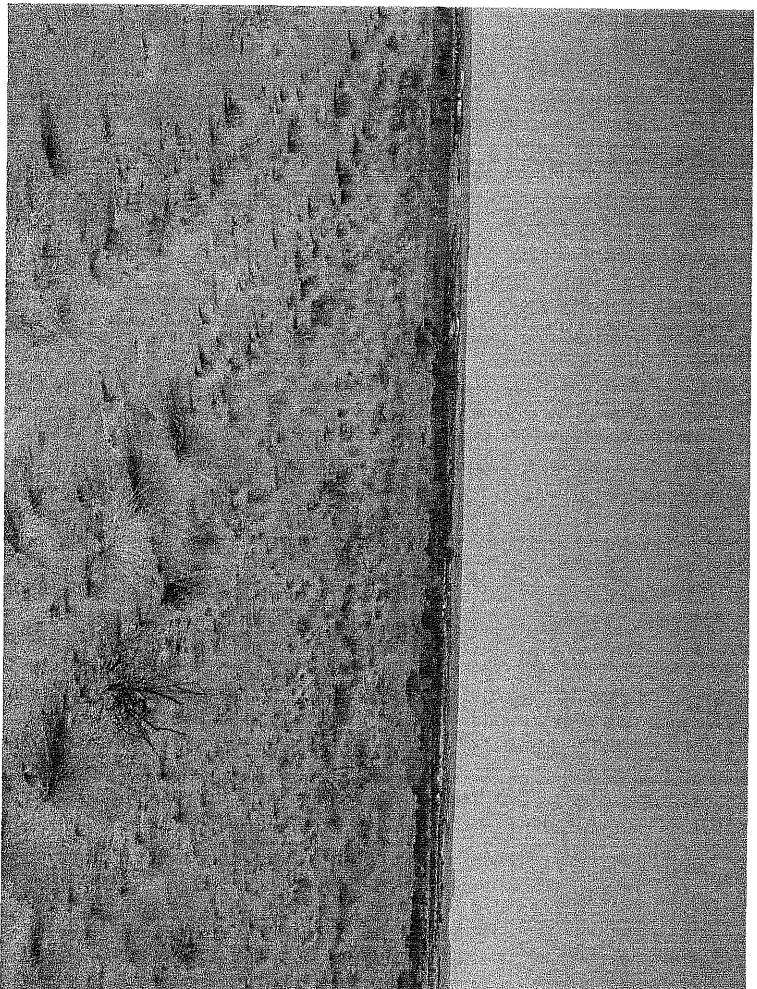


Fig 3 View towards Orange R.

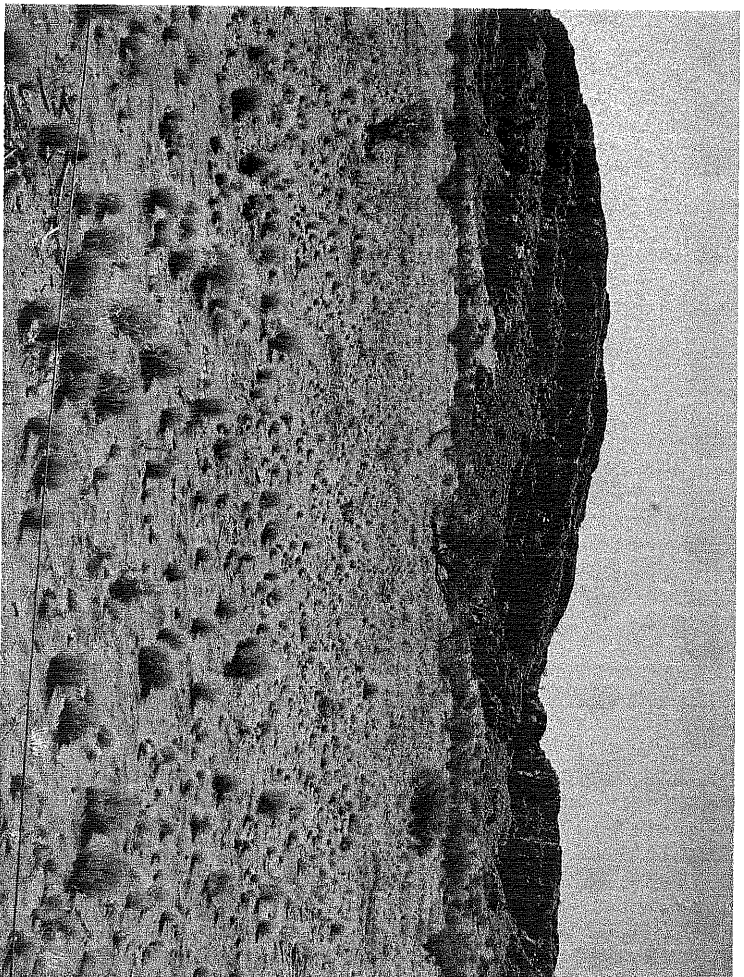


Fig 4, View towards Post-se Berg