

**PHASE 1 HERITAGE IMPACT ASSESSMENT REPORT ON A
PORTION OF THE FARM KAMBREEK 38, WNW OF POFADDER,
SIYANDA DISTRICT MUNICIPALITY, NORTHERN CAPE PROVINCE.**

Peter B Beaumont

c/o Archaeology Department
McGregor Museum
PO Box 316
8300 Kimberley
Tel 053 - 842 0986 or 053 - 839 2700
Fax 053 - 842 1433
e-mail se@museumsnc.co.za

CONSULTANT

Marquerite Geldenhuys

MEG Environmental Impact Studies

Tweedelaan 13
Oosterville
8801 Upington
Tel 054 - 332 2781
Fax 054 – 332 2781
e-mail megois@intekom.co.za

4 February 2008

received: 17.03.2008

EXECUTIVE SUMMARY

The purpose of this study was to establish if any heritage sites were present on an undeveloped 200 ha portion of the farm Kambreek 38, located about 40 km WNW of Pofadder in the Siyanda District Municipality of the Northern Cape Province. A morning spent driving and walking over the full extent of this sparsely vegetated slope of gritty beige – brown sand, between hills to the east and west, produced no artefacts, fossil bones, or graves of any age. It is consequently considered that this terrain has no heritage potential and that its proposed use for further vineyards will have no impact whatsoever on the heritage resources of the Northern Cape.

BACKGROUND INFORMATION

Karsten Boerdery is a sophisticated Northern Cape - based farming enterprise that is particularly focused on the production of table grapes for the European Union market. They have latterly decided to expand their Klein Pella operation by extending their vineyards to a 200 ha upslope portion of the adjacent farm Kambreek 38. These properties are the second – largest producer of dates in the Southern Hemisphere, but there are also areas under *Hoodia*, and grapes, which ripen extremely early, due to the very high spring and summer temperatures that prevail there.

This report is part of an EIA that is being compiled by Marquerite Geldenhuys of MEG Environmental Impact Studies at the request of the farm manager Khaki Goosen.

REGIONAL ARCHAEOLOGY

The closest known sites, some 100 km to the south, are LSA occurrences at Leeu Klip and MSA – Late Acheulean scatters at Maans – Pannen (Beaumont *et al.* 1995). Also in that vicinity is Bosluispan, where Miocene fluvial deposits with gomphothere and other fossils (e.g. McCarthy *et al.* 1985) were initially investigated by the author in 1980.

PROPERTY DESCRIPTION

The examined undeveloped 200 ha portion of the farm Kambreek 38 is located about 40 km WNW of Pofadder in the Siyanda District Municipality of the Northern Cape (Figs. 1 & 2). It comprised gritty beige – reddish brown sand with some quartz and felspar rubble, sparsely covered by grass, melkbos and other bushes, that slopes down northwards from 605 m to 430 m (Figs. 3 – 5). Co-ordinates for the upslope and downslope limits of this ground are 28° 58' 53.4" S, 19° 00' 07.9" E and 28° 56' 57.3" S, 18° 59' 39.4" E, respectively. A morning was spent driving slowly and walking over its full extent on Thursday 24 January 2008 in the company of

Marquerite Geldenhuys and Lucille Karsten of Dept. Tourism, Environment & Conservation(Sprinbok).

SUPERFICIAL GEOLOGY

Pits and other sections showed that decomposed bedrock is locally overlain by 0 – 4 m of gritty reddish beige – brown sand in which rubble clasts tend to increase downwards. No Pella quartzite was seen, and bedrock appears to be entirely schists belonging to the Namaqualand Metamorphic Complex (Kent 1980).

HERITAGE FINDINGS

A careful search within the area, including quartzite vein outcrops and nearby hillside overhangs, produced no artefacts, fossil bones, or graves of any age.

CONCLUSIONS

My conclusion is that this farm portion contains no heritage material and that its use for grape production will have no impact on the heritage resources of the Northern Cape.

REFERENCES

Beaumont, P.B., Smith, A.B. & Vogel, J.C. 1995. Before the Einiqua: The Archaeology of the Frontier Zone. In A.B. Smith (ed.) *Einiqualand*, pp. 236 – 264. Rondebosch, UCT Press.

Kent, L.E. (ed.) 1980. Stratigraphy of South Africa. Part 1. *Geol. Survey of S. Afr. Handbook* 8, 1 – 690.

McCarthy, T.S., Moon, B.P. & Lewin, M. 1985. Geomorphology of the western Bushmanland Plateau, Namaqualand, South Africa. *S. Afr. Geog. Jl.* 67(2), 160 – 178.



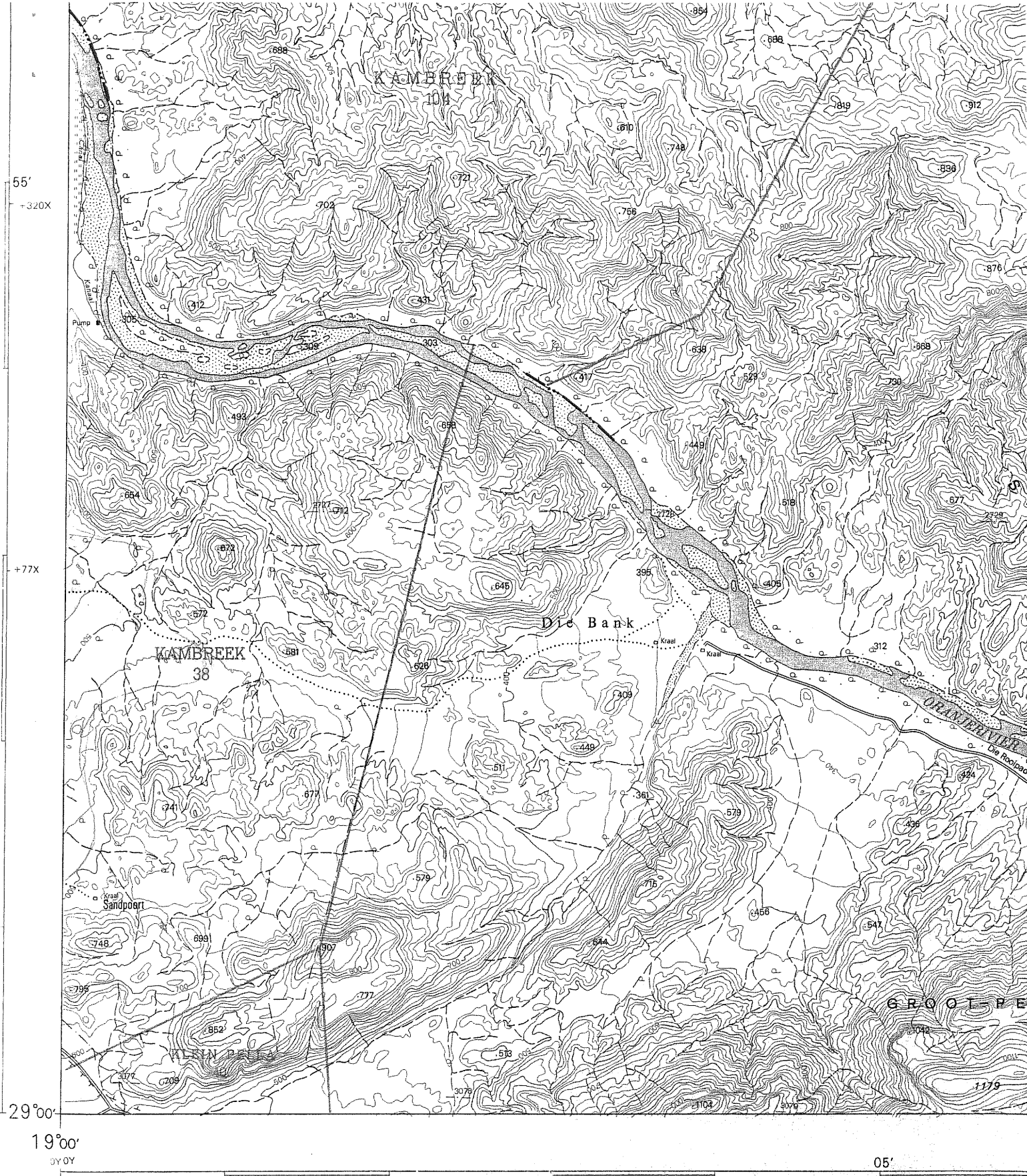
55

1980
290

FIG 2 2818 DD HAMBREK
CONTOUR INTERVAL 20 METRES

5 000 METRES

Gedruk deur die Staatsdrukker, Privatezaak X85, Pretoria
Printed by the Government Printer, Private Bag X85, Pretoria
Prys per vel Price per sheet



Air Photography 1963. (Job No. 473/63). Surveyed in 1972 and drawn in 1973 by the Director - General of Surveys.
 Lugfotografie 1963. (Taak No. 473/63) Opgeneem in 1972 en geteken in 1973 deur die Direkteur - generaal van Opmetings.

CONTOUR INTERVAL 20 METRES

© State Copyright Staatsouteursreg

Metres 1 000

REFERENCE VERKLARING
FIG 1 - 2819 CC PELLADRIE
 International boundaries Internasionale Grense

English Feet 5 000

Scale 1:100 000

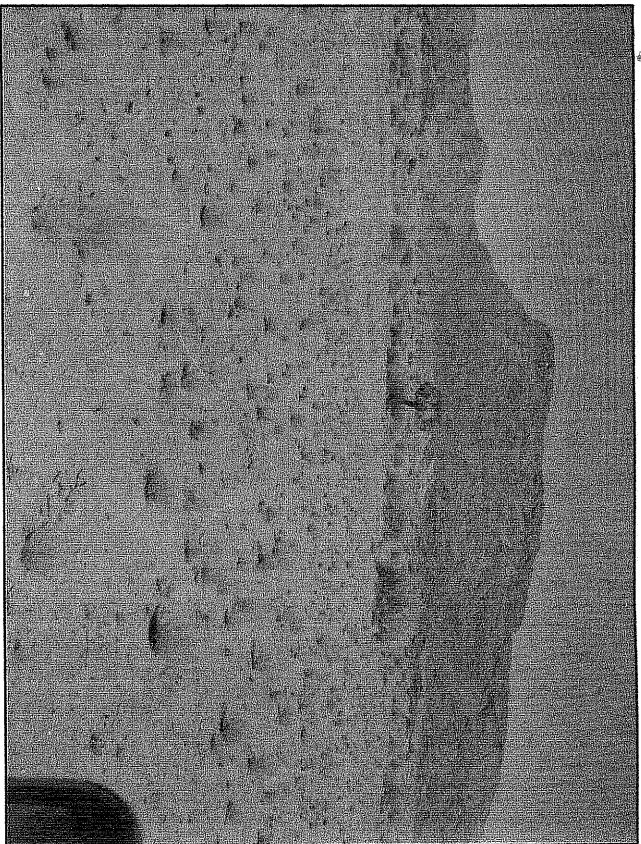


FIG 3 VIEW

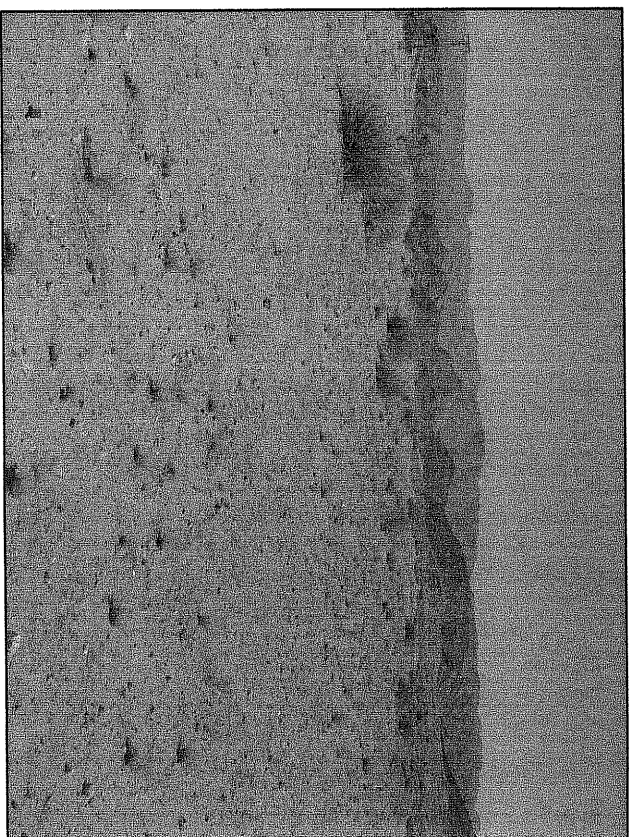


FIG 4. VIEW

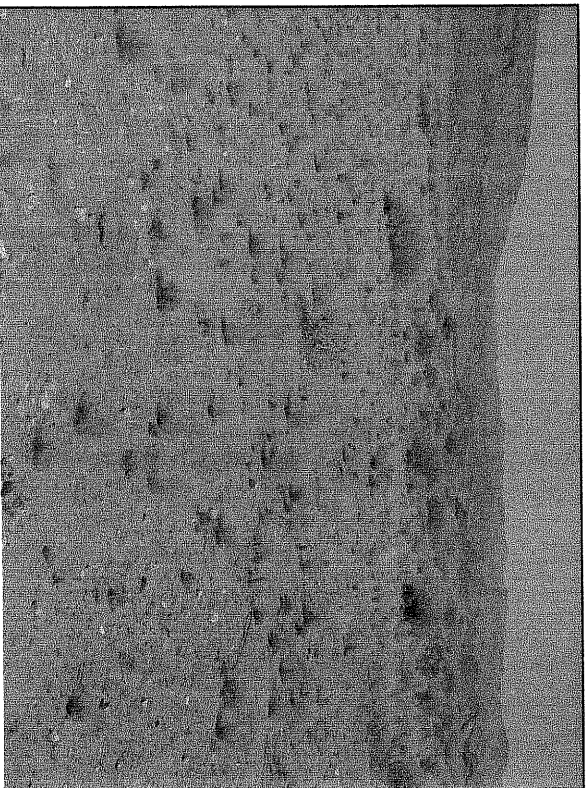


FIG 5. VIEW