

**PHASE 1 HERITAGE IMPACT ASSESSMENT REPORT ON A  
PLANNED EXTENSION OF THE ROSEDALE SETTLEMENT IN  
UPINGTON, //KHARA HAIS MUNICIPALITY, NORTHERN CAPE  
PROVINCE.**

**Peter B Beaumont**

c/o Archaeology Department  
McGregor Museum  
PO Box 316  
8300 Kimberley  
Tel 053 - 842 0986 or 053 - 839 2700  
Fax 053 - 842 1433  
e-mail [se@museumsmc.co.za](mailto:se@museumsmc.co.za)

**CONSULTANT**

**Ms Irmé van Zyl**

**Van Zyl Environmental Consultants**

PO Box 567  
8800 Upington  
Tel 054 – 338 0722 or 072 222 6194  
Fax 054 – 338 0722  
e-mail [ibvanzyl@telkomsa.net](mailto:ibvanzyl@telkomsa.net)

24 August 2006

## EXECUTIVE SUMMARY

The purpose of this study was to establish if any heritage sites were present in a planned extension of the Rosedal township in Upington, //Khara Hais Municipality, Northern Cape (Figs 1 & 2). This ca. 10 ha property consisted of slightly sloping flat ground drained by a small shallow gully running to the south – east, on which Precambrian schist bedrock is overlain by schist and calcrete rubble in red sand matrix 0 – 60 cm deep. On it I found two quartzite artefacts that may be of ESA age, but nowhere were any sites, fossil bones or graves of any age. It is consequently considered that this ground has no significant heritage potential and that its development will have no impact on the archaeological resources of the Northern Cape.

## **BACKGROUND INFORMATION**

Uppington is a thriving city with a burgeoning population and a consequently huge demand for housing there. This study was requested by Irmé van Zyl of Van Zyl Environmental Consultants, acting in conjunction with Stabilis Development Planners based in Uppington.

## **LOCAL ARCHAEOLOGY**

Rather few sites are known in the near vicinity of Uppington, with one of these being the recently - located Victoria West occurrence on the farm Droogehout 422, about 30 km WNW of it, on the N 10 to Nakop.

## **PROPERTY DESCRIPTION**

This ca. 10 ha area, a portion of Erven 1, lies immediately south of a railway line and is at the northern end of the Rosedale township, some 4 km north – west of the Uppington town centre (Figs 1 & 2). It comprises a slightly sloping flat piece of ground that is heavily overgrazed and transected by a shallow gully running south – eastwards. I spent about 45 minutes walking over its full extent, with eastern midpoint co-ordinates of 28° 26' 48" S, 21° 12' 26" E, and an elevation there of 824 m, on Wednesday 2 August 2006.

## **SUPERFICIAL GEOLOGY**

The sediment sequence was seen to be bedrock of Precambrian schist on the surface or covered by schist and calcrete rubble in a gritty red sand matrix that is over 60 cm deep in places.

## **HERITAGE FINDINGS**

Two fresh quartzite artefacts, a discoidal core and an irregular flake (Fig 3), were recovered during my foot survey, but there were certainly no sites, palaeontological bones or graves of any age.

## CONCLUSIONS

The investigated terrain produced no significant heritage material and its use for housing will therefore have no impact on the archaeological resources of the Northern Cape.

## NOTES

- A copy of the locality maps and other appended Figures must accompany this report to SAHRA.
- Applications to SAHRA are not processed unless accompanied by the payment of R150 per application. SAHRA banking details are: ABSA, Branch Code: 312109; Current Account no.: 360 680 606.



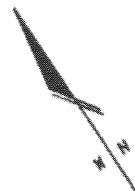
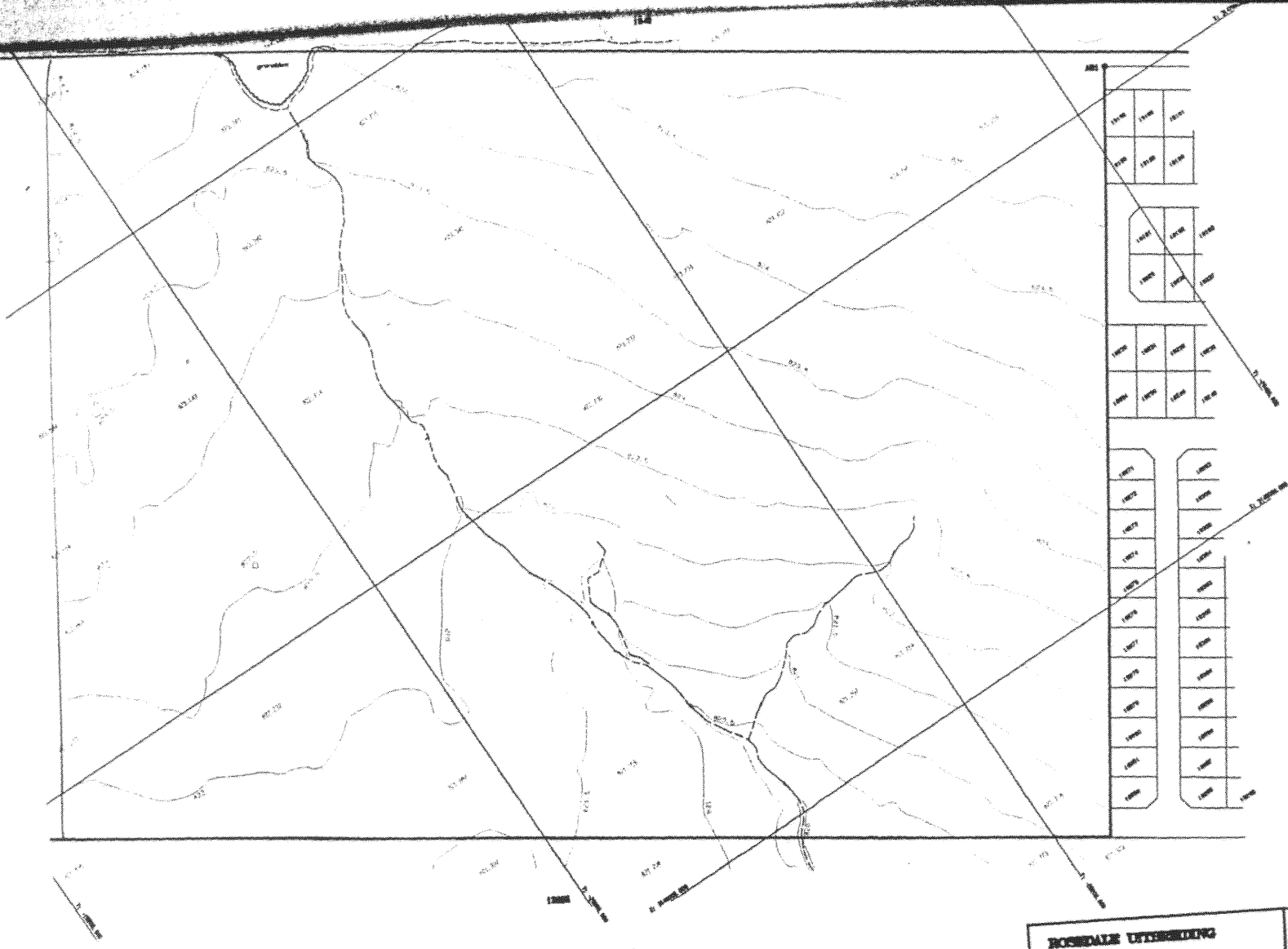
FIG. 1.  
2821 AC UPINGTON.

Printed by the Government Printer, Private Bag X85, Pretoria  
Gedruk deur die Staatsdrukker, Private Bag X85, Pretoria

0 10 Kilometres

An African Co-ordinate System are indicated in the

FIG 2



VOORBEREIDING 1982  
 NO 1 - 0408.08 10701.18 00.14

**HOEDALE UITWERKING**  
**DETAIL VAN BONTFOR**

**SKAAL : 1:1000**  
**TITEL : URUSEL-TACHY**  
**DATUM : Junie 2003**

**LITZ & VAN ZYL**  
 South Africa Institute of Surveyors  
 Pretoria / P.O. Box 815 - 00199  
 (01) 004-230-0000 Fax: 004-230-1111  
 E-Mail: Litv@litv.co.za

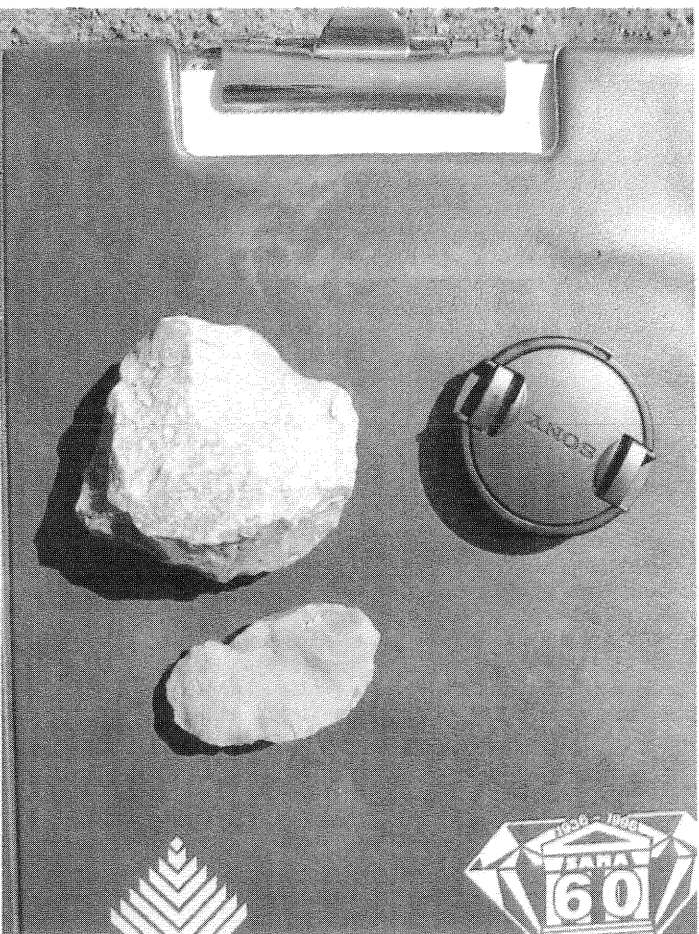


FIG 3. DISCOIDAL CORE + FLAKE, MOST POSSIBLY ESA