

9|2|032|0004

**PHASE 1 HERITAGE IMPACT ASSESSMENT REPORT ON A
PLANNED EXTENSION OF THE LEERKRANTZ TOWNSHIP,
SIYANDA DISTRICT MUNICIPALITY, NORTHERN CAPE PROVINCE.**

Peter B Beaumont

c/o Archaeology Department
McGregor Museum
PO Box 316
8300 Kimberley
Tel 053 - 842 0986 or 053 - 839 2700
Fax 053 - 842 1433
e-mail se@museumsnc.co.za

CONSULTANT

Ms Marquerite Geldenhuys

MEG Environmental Impact Studies
Tweedelaan 13
Oosterville
8801 Upington
Tel 054 - 332 2781
Fax 054 - 332 2781
e-mail meqois@intekom.co.za

16 August 2006

EXECUTIVE SUMMARY

The purpose of this study was to establish if any heritage sites were present on a proposed extension of the Leerkrantz Township, Siyanda District Municipality, Northern Cape. Within that 4.8 ha area Precambrian schists were noted to be thinly covered by quartz rubble and occasional river – rolled pebbles in a matrix of beige sand, on and in which one stone artefact, but no actual sites, fossil bones or early graves were seen. It is consequently considered that this property has no heritage potential and that its development would have no impact on the archaeological resources of the Northern Cape.

BACKGROUND INFORMATION

Ongoing expansion of lower Orange River vineyards and the consequent increase in related jobs, together with rapid population growth, has resulted in a huge demand for housing there. The present study was requested by M Geldenhuis of MEG Environmental Impact Studies, acting in conjunction with Macroplan Town and Regional Planners based in the regional hub of Upington.

LOCAL ARCHAEOLOGY

Little is known about the prehistory of this part of the Northern Cape, where one of the few recorded sites is the recently - located Victoria West occurrence on the farm Droogehout 422, some 30 km WNW of Upington, on the N 10 to Nakop.

PROPERTY DESCRIPTION

The 4.8 ha area that was examined lies on the eastern side of the current Leerkrantz (or Leerkrans) township, which is close to the N 10 from Groblershoop to Upington, and about 30 km away from the latter (Figs 1 & 2). It is sparsely covered by grass and low shrubs, is flat, with a small gully, and slopes in the direction of the Orange River, which is about 1.5 km away (Fig 3). I spent some 45 min walking over its full extent, roughly centered on 28° 24' 14" S, 21° 31' 32" E, and at an elevation of 835 m, on Monday 31 July 2006.

SUPERFICIAL GEOLOGY

The deposit sequence was seen to be bedrock of Precambrian schist overlain by a quartz rubble and occasional river – rolled pebbles in a thin (< 5 cm) matrix of gritty beige sand. Smoothed pebbles reflect fluvial transport and, given the height of ≥20 m above the Orange River, are probably Older Gravel vestiges, like the deposits of that ascription which occur at Renosterkop near Kakamas.

HERITAGE FINDINGS

My random search of this property produced one brown jasper flake with a faceted butt that is probably of Fauresmith or MSA age, but no actual sites, palaeontological bones or early graves were seen.

CONCLUSIONS

The investigated area was bereft of any significant heritage material and its use for housing will therefore have no impact on the archaeological resources of the Northern Cape.

NOTES

- A copy of the locality maps and all appended Figures must accompany this report to SAHRA.
- Applications to SAHRA will not be processed unless accompanied by payment of R150 per application. SAHRA banking details are: ABSA, Branch Code: 312109; Current Account no.: 360 680 606.

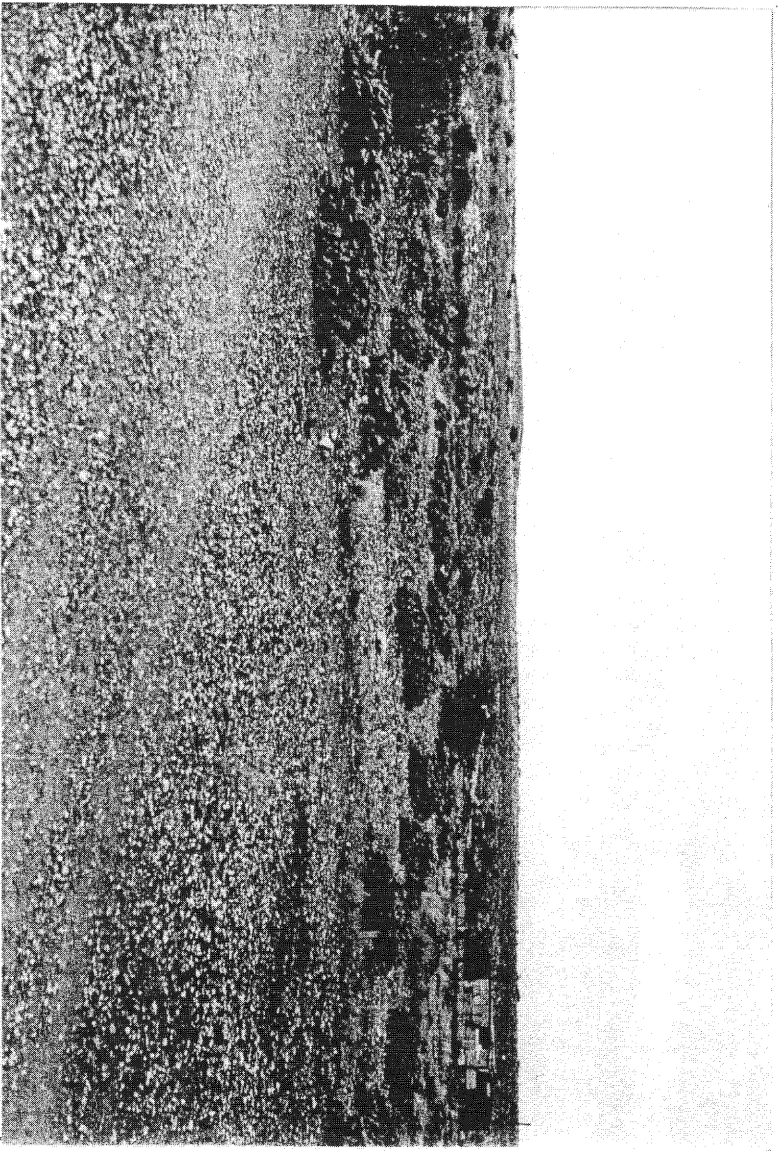
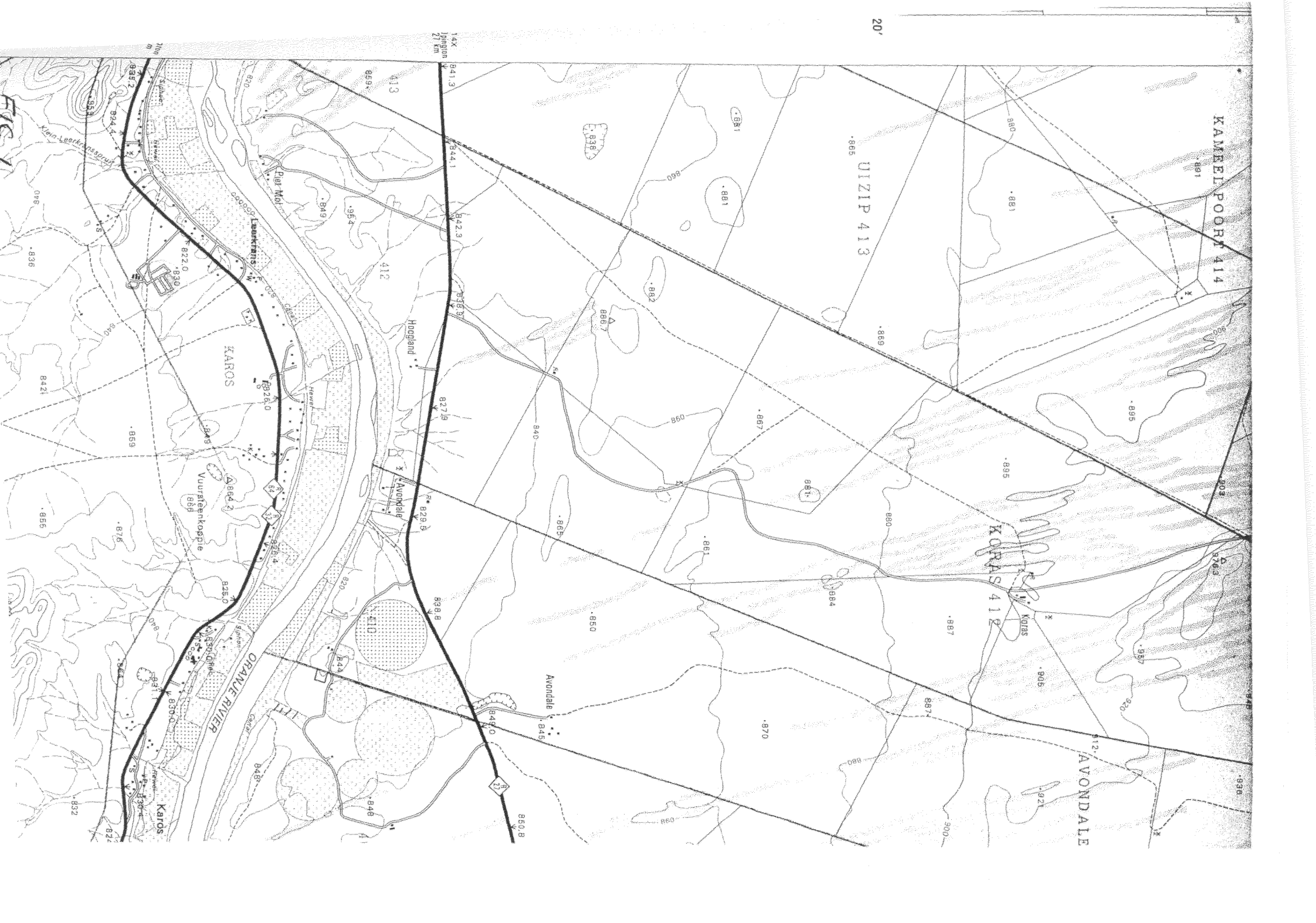


FIG 3



KAMEELPOORT 414

UIZIP 413

KAROS 412

AVONDALE

KAROS

ORANGE RIVER

1:4X
21 km

20

FIG 2

