

**PHASE 1 HERITAGE IMPACT ASSESSMENT REPORT ON A  
PLANNED EXTENSION OF THE KAROS TOWNSHIP, SIYANDA  
DISTRICT MUNICIPALITY, NORTHERN CAPE PROVINCE.**

**Peter B Beaumont**

c/o Archaeology Department  
McGregor Museum  
PO Box 316  
8300 Kimberley  
Tel 053 - 842 0986 or 053 - 839 2700  
Fax 053 - 842 1433  
e-mail [se@museumsnc.co.za](mailto:se@museumsnc.co.za)

**CONSULTANT**

**Ms Marquerite Geldenhuys**

**MEG Environmental Impact Studies**

Tweedelaan 13  
Oosterville  
8801 Upington  
Tel 054 - 332 2781  
Fax 054 - 332 2781  
e-mail [meqois@intekom.co.za](mailto:meqois@intekom.co.za)

16 August 2006

## **EXECUTIVE SUMMARY**

The purpose of this study was to establish if any heritage sites were present in a proposed extension of the Karos Township, Siyanda District Municipality, Northern Cape. Within that 6.4 ha area Precambrian schists were thinly overlain by calcrete rubble and rounded pebbles in a matrix of gritty beige sand, on and in which rare artefacts, but no fossil bones or early graves, were seen. It is consequently considered that this property has no heritage significance and that its development would have no impact on the archaeological resources of the Northern Cape.

## **BACKGROUND INFORMATION**

Ongoing expansion of lower Orange River vineyards and the consequent increase in related jobs has, together with rapid population growth, resulted in a huge demand for housing there. The present study was requested by M Geldenhuis of MEG Environmental Impact Studies, acting in conjunction with Macroplan Town and Regional Planners based in the regional hub of Upington.

## **LOCAL ARCHAEOLOGY**

Little is known about the prehistory of this part of the Northern Cape, where one of the rather few recorded sites is the recently - located Victoria West occurrence on the farm Droogehout 422, some 30 km WNW of Upington, on the N 10 to Nakop.

## **PROPERTY DESCRIPTION**

The 6.4 ha area that was examined lies on the south - eastern side of the current Karos township, which is close to the N 10 from Groblershoop to Upington, and about 40 km away from the latter (Figs 1 & 2). It is thinly covered by grass and small shrubs, and is flat, with a slope in the direction of the Orange River, about 2 km away (Fig 3). I spent an hour walking over its full extent, roughly centered on 28° 25' 29" S, 21° 36' 42" E, and at an elevation of 837 m, on Monday 31 July 2006.

## **SUPERFICIAL GEOLOGY**

The deposit sequence was seen to be bedrock of Precambrian schist, overlain by patches of calcrete rubble and a scatter of subrounded – rounded pebbles. The latter included specimens based on quartzite, banded ironstone and red jasper, with these and the calcrete clasts being in a thin (< 5 cm) matrix of beige sand. Pebble smoothing certainly reflects fluvial transport and, given the height of ≥20 m above the Orange River, these are probably Older Gravel vestiges, like the more substantial deposits of that ascription which occur at Renosterkop near Kakamas.

## HERITAGE FINDINGS

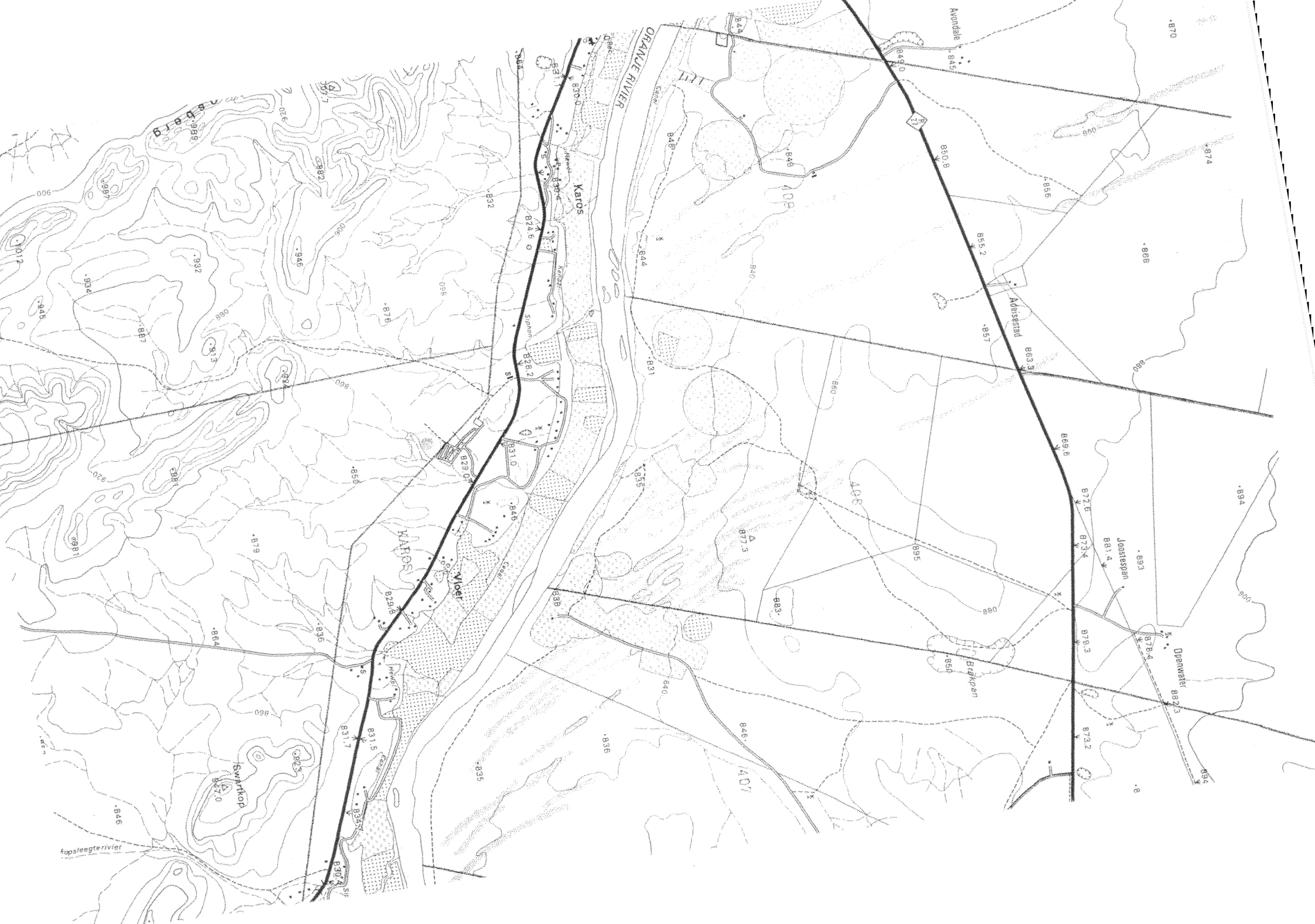
My random search of this property produced a few (3) cores and flakes that are possibly ESA (Fig 3<sup>4</sup>), but no actual sites, palaeontological bones or graves of any age were seen.

## CONCLUSIONS

The investigated area was bereft of any significant heritage material and its use for housing will therefore have no impact on the archaeological resources of the Northern Cape.

## NOTES

- A copy of the locality maps and all appended Figures must accompany this report to SAHRA.
- Applications to SAHRA will not be processed unless accompanied by payment of R150 per application. SAHRA banking details are: ABSA, Branch Code: 312109; Current Account no.: 360 680 606.



ORANGE RIVER

KAROS

MLOER

SWARTKOP

AONDESTAD

JOSTEGEEN

BRAKPAN

OPENWATER

Kopsaengte rivier



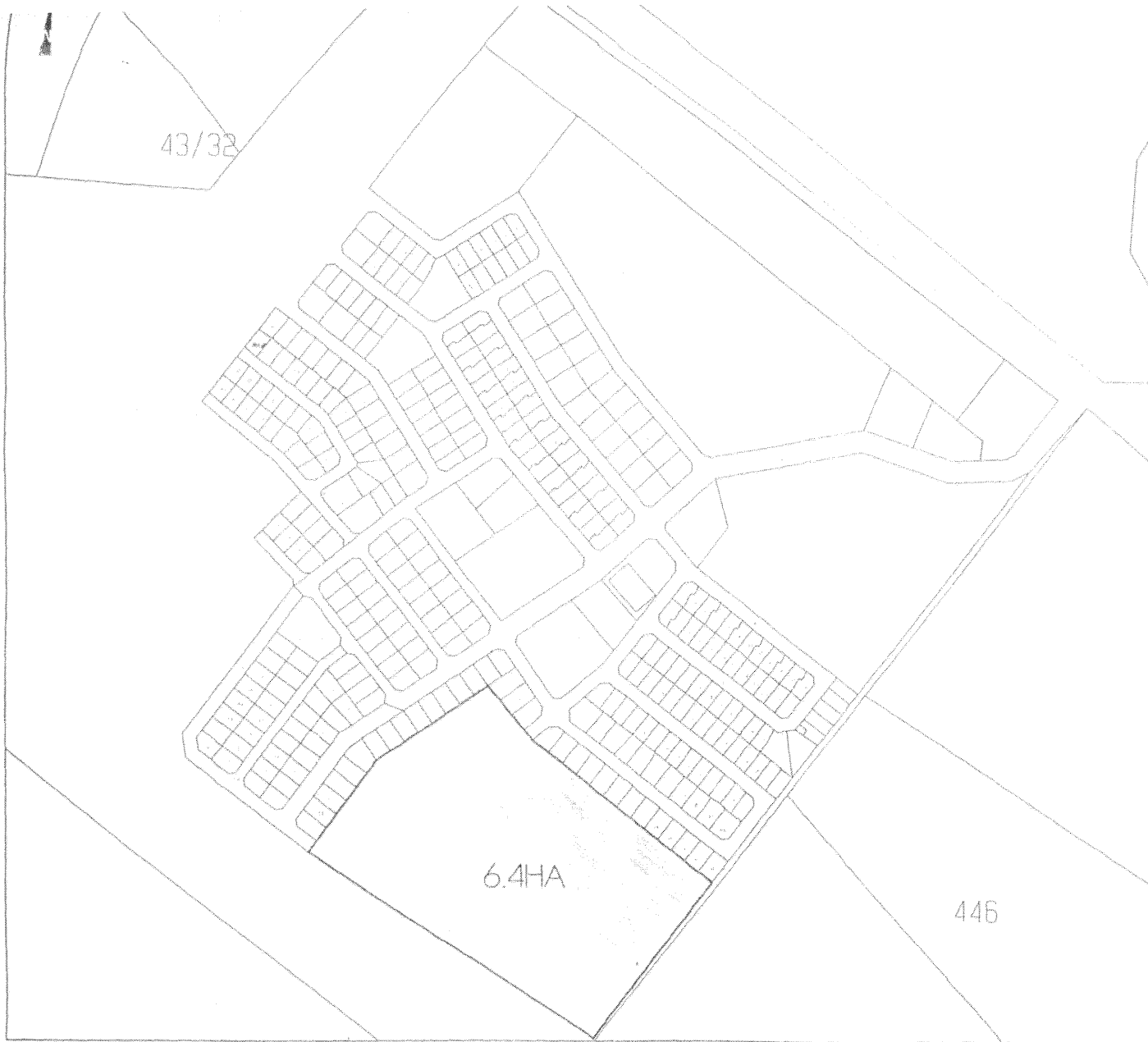



Fig. 2  
Liggingsplan - Plaas


KAROS  
UITBREIDING

Aansoekgebied 

**MACROPLAN**  
Stads- & Streekbeplanners  
Town & Regional Planners



Spatial Designs  
Land Use Specialists



**GOBETLA**

U/KH/KR/02

NO.:	1
DATE:	12/11/2011
BY:	W. J. van der Merwe
SCALE:	1:1000

FIG 2.

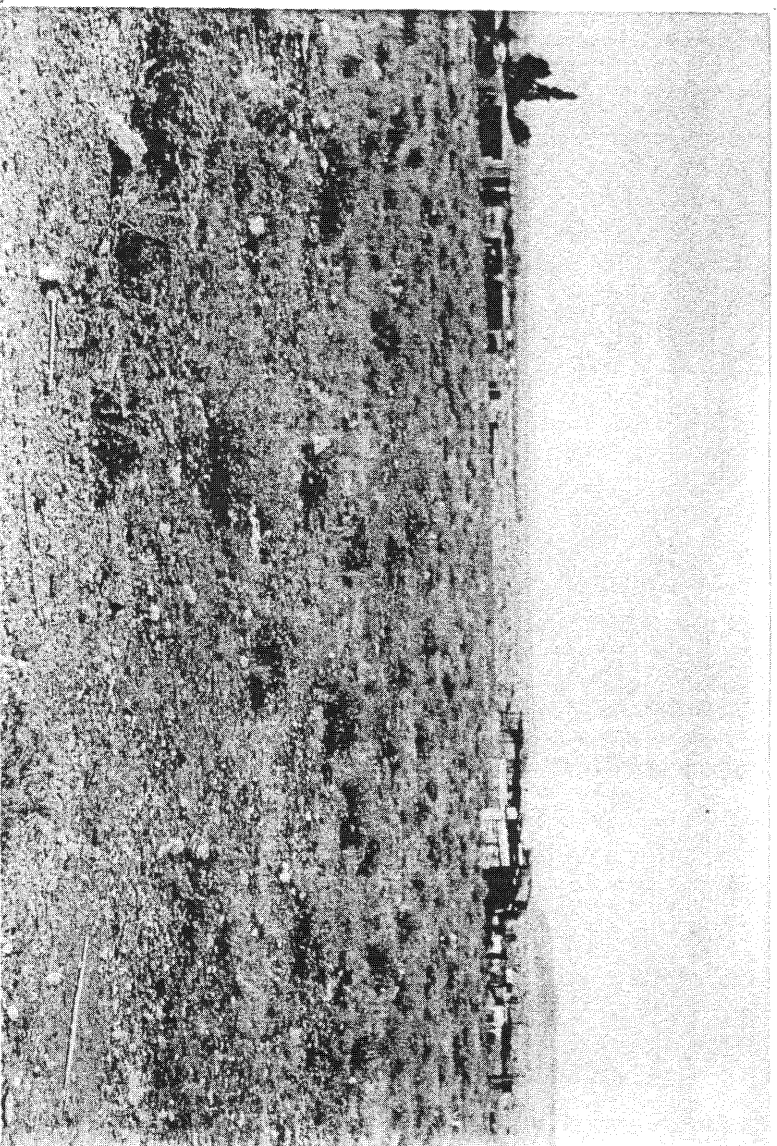


FIG 3



FIG 4. 2 CORES + 1 FLAME, MOST POSSIBLY ESA.