

**PHASE 1 HERITAGE IMPACT ASSESSMENT REPORT ON A
PLANNED TOWNSHIP EXTENSION FLANKING KEIMOESWEG,
//KHARA HAIS MUNICIPALITY, NORTHERN CAPE PROVINCE.**

Peter B Beaumont

c/o Archaeology Department
McGregor Museum
PO Box 316
8300 Kimberley
Tel 053 - 842 0986 or 053 - 839 2700
Fax 053 - 842 1433
e-mail se@museumsnc.co.za

CONSULTANT

Ms Marquerite Geldenhuys

MEG Environmental Impact Studies

Tweedelaan 13
Oosterville
8801 Upington
Tel 054 - 332 2781
Fax 054 - 332 2781
e-mail megois@intekom.co.za

18 August 2006

EXECUTIVE SUMMARY

The purpose of this study was to establish if any heritage sites were present on a proposed urban development area flanking Keimoesweg, //Khara Hais Municipality, Northern Cape. Within this 12.7 ha terrain Precambrian schists were covered by calcrete, overlain in turn by a discontinuous zone of rounded pebbles in a matrix of beige sand. In this I found a very sparse artefact scatter, but saw no actual sites, fossil bones or early graves were seen. It is consequently considered that this ground has no significant heritage potential and that its development will have no impact on the archaeological resources of the Northern Cape.

BACKGROUND INFORMATION

Upington is a thriving city with a burgeoning population and a resultant huge demand for housing. This study was requested by M Geldenhuis of MEG Environmental Impact Studies, acting in conjunction with Macroplan Town and Regional Planners based there.

LOCAL ARCHAEOLOGY

Rather few sites are known in the near vicinity of Upington, with one of these being the recently - located Victoria West occurrence on the farm Droogehout 422, about 30 km WNW of it, on the N 10 to Nakop.

PROPERTY DESCRIPTION

The 12.7 ha area that was examined lies immediately south of Keimoesweg, some 2 km west of the Upington town centre and 1 km north of the Orange River (Figs 1 & 2). It was sparsely covered by grass and low shrubs, was fairly flat, and had a small road gravel quarry on its NW side, facing the main road (Fig 3). I spent some 50 minutes walking over its full extent, which has western edge co-ordinates of 28° 28' 5" S, 21° 13' 0.3" E, and an elevation of 810 m, on Tuesday 1 August 2006.

SUPERFICIAL GEOLOGY

The sediment sequence was seen to be bedrock of Precambrian schist, overlain, in the roadside quarry, by over 2 m of calcrete, on which were scattered pebbles – small cobbles, mainly of brown jasper, in a matrix of gritty beige sand. As the river – abraded clasts are some 30 m above the Orange River, these are tentatively taken to be remnants of the Older Gravels.

HERITAGE FINDINGS

My random search of the property produced three fresh undiagnostic flakes and an abraded core that is possibly of ESA ascription, but no actual sites, palaeontological bones or early graves were seen.

CONCLUSIONS

The investigated terrain was bereft of any significant heritage material and its use for housing will therefore have no impact on the archaeological resources of the Northern Cape.

NOTES

- A copy of the locality maps and all appended Figures must accompany this report to SAHRA.
- Applications to SAHRA will not be processed unless accompanied by payment of R150 per application. SAHRA banking details are: ABSA, Branch Code: 312109; Current Account no.: 360 680 606.



FIG. 1.
2821 AC UPINGTON.

Printed by the Government Printer, Private Bag X85, Pretoria
 Gedruk deur die Staatsdrukker, Privatestak X85, Pretoria

ou African Co-ordinate System are indicated in the

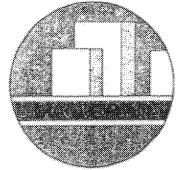
FIG 2



Figur 2
Liggingsplan - Plaaslik

Aansoekgebied 

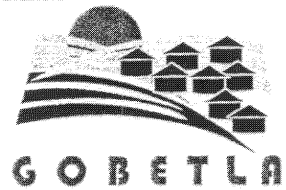
MACROPLAN
Stads- & Streekbeplanners
Town & Regional Planners



Posbus 987
Uppington
8800

Tel: 054 - 332 3642

Spatial Designs
Land Use Specialists



PLAN NO. NO.

U/KH/KW/02

SKAAL	SCALE	ONTWERP	DESIGNED
1:10 000		Len Fourie	
		ONTWERF	DESIGNED
		Thys Neels	
ONTWERF	DATE	ONTWERP	DESIGNED
June 2006		ONTWERF	DESIGNED

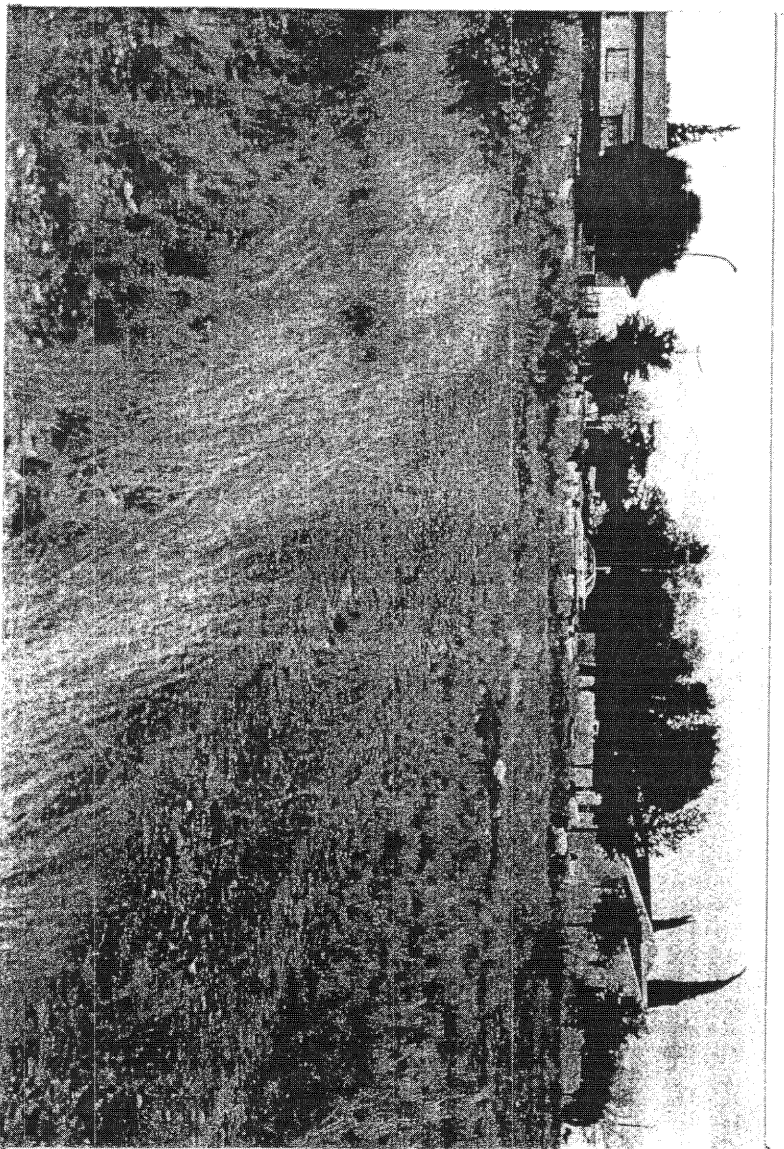


FIG 3