

**PHASE 1 HERITAGE IMPACT ASSESSMENT REPORT ON A
PLANNED TOWNSHIP EXTENSION FLANKING LEMOENDRAAI IN
UPINGTON, //KHARA HAIS MUNICIPALITY, NORTHERN CAPE
PROVINCE.**

Peter B Beaumont

c/o Archaeology Department
McGregor Museum
PO Box 316
8300 Kimberley
Tel 053 - 842 0986 or 053 - 839 2700
Fax 053 - 842 1433
e-mail se@museumsnc.co.za

CONSULTANT

Ms Marquerite Geldenhuys

MEG Environmental Impact Studies

Tweedelaan 13
Oosterville
8801 Upington
Tel 054 - 332 2781
Fax 054 - 332 2781
e-mail megois@intekom.co.za

19 August 2006

EXECUTIVE SUMMARY

The purpose of this study was to establish if any heritage sites were present on a proposed urban development area flanking Lamoendraai, //Khara Hais Municipality, Northern Cape. This 4.8 ha property consists of a steep slope on which sometimes outcropping Precambrian schist bedrock was variably covered by patches of calcrete and / or rounded river cobbles in a matrix of beige sand. On this surface I found a total of five amorphous artefacts, mainly based on brown jasper clasts, but no actual sites, fossil bones or early graves were seen. It is consequently considered that this ground has no significant heritage potential and that its development will have no impact on the archaeological resources of the Northern Cape.

BACKGROUND INFORMATION

Upington is a thriving city with a burgeoning population and a resultant huge demand for housing. This study was requested by M Geldenhuis of MEG Environmental Impact Studies, acting in conjunction with Macroplan Town and Regional Planners based there.

LOCAL ARCHAEOLOGY

Rather few sites are known in the near vicinity of Upington, with one of these being the recently - located Victoria West occurrence on the farm Droogehout 422, about 30 km WNW of it, on the N 10 to Nakop.

PROPERTY DESCRIPTION

The 4.8 ha area that was examined lies immediately north of Lemoendraai, about 2 km west of the Upington town centre and 0.6 km north of the Orange River (Figs 1 & 2). It consists of a steepish (c. 20°) shrub and grass – covered slope that runs down to the Lemoendraai smallholdings on the incised floodplain of the river (Fig 3). I spent some 30 minutes walking over its full extent, which has eastern edge co-ordinates of 28° 28' 0.5" S, 21° 13' 26" E, and an upslope elevation of 810 m, on Tuesday 1 August 2006.

SUPERFICIAL GEOLOGY

The sediment sequence was seen to be bedrock of Precambrian schist, outcropping here and there, overlain in places by calcrete and then scattered pebbles – cobbles, in a matrix of gritty beige sand. As the river – abraded clasts are up to some 25 m above the Orange River, they are tentatively taken to be remnants of the Older Gravels.

HERITAGE FINDINGS

My random search of the property produced five artefacts, namely a flake and four cores, all fresh and on cobbles of brown jasper and grey chert, that could be of any age. There were no actual sites, palaeontological bones or early graves.

CONCLUSIONS

The investigated ground surface yielded occasional artefacts that probably reflect sporadic flaking at a raw material source, but significant heritage material is absent, and its use for housing will therefore have no impact on the archaeological resources of the Northern Cape.

NOTES

- A copy of the locality maps and all appended Figures must accompany this report to SAHRA.

- Applications to SAHRA will not be processed unless accompanied by payment of R150 per application. SAHRA banking details are: ABSA, Branch Code: 312109; Current Account no.: 360 680 606.



FIG 1
 28 21 A REFERENCE
 UPINGTON

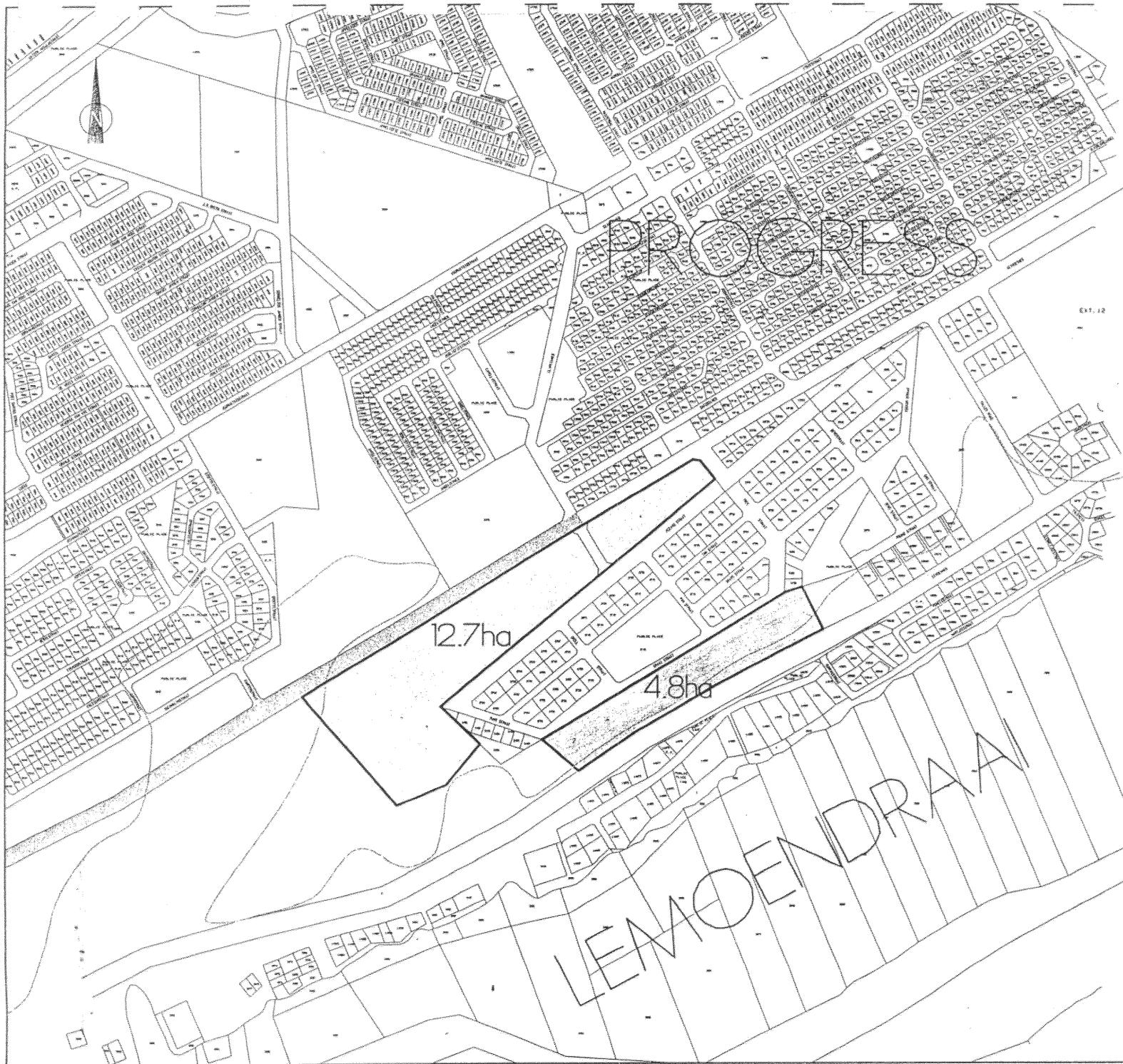
VERKLARING

a of the South African Co-ordinate System are indicated in the
 b short black ticks at 10 000 metre intervals, with co-ordinate
 values in units of 10 000 metres in blue.

Printed by the Government Printer, Private Bag X85, Pretoria
 Gedruk deur die Staatsdrukker, Private Bag X85, Pretoria

International Boundary and Baseline
 Provincial Boundary

FIG 2

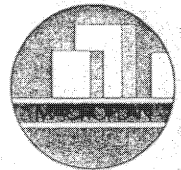


Figuur 2
Liggingsplan - Plaaslik

Aansoekgebied 

MACROPLAN
Stads- & Streekbeplanners
Town & Regional Planners

Postbus 987
Upington
8800
Tel: 054 - 332 3642



Spatial Designs
Land Use Specialists



G O B E T L A

PLAN NO. NO.

U/KH/KW/02

SCHAAL	SCALE	ONTWERP	DESIGNED	Len Fourie
	110 000	ONTWERP	DRAWN	Thys Neels
DATUM	DATE	ONTWERP	CHECKED	
	Junie 2006			

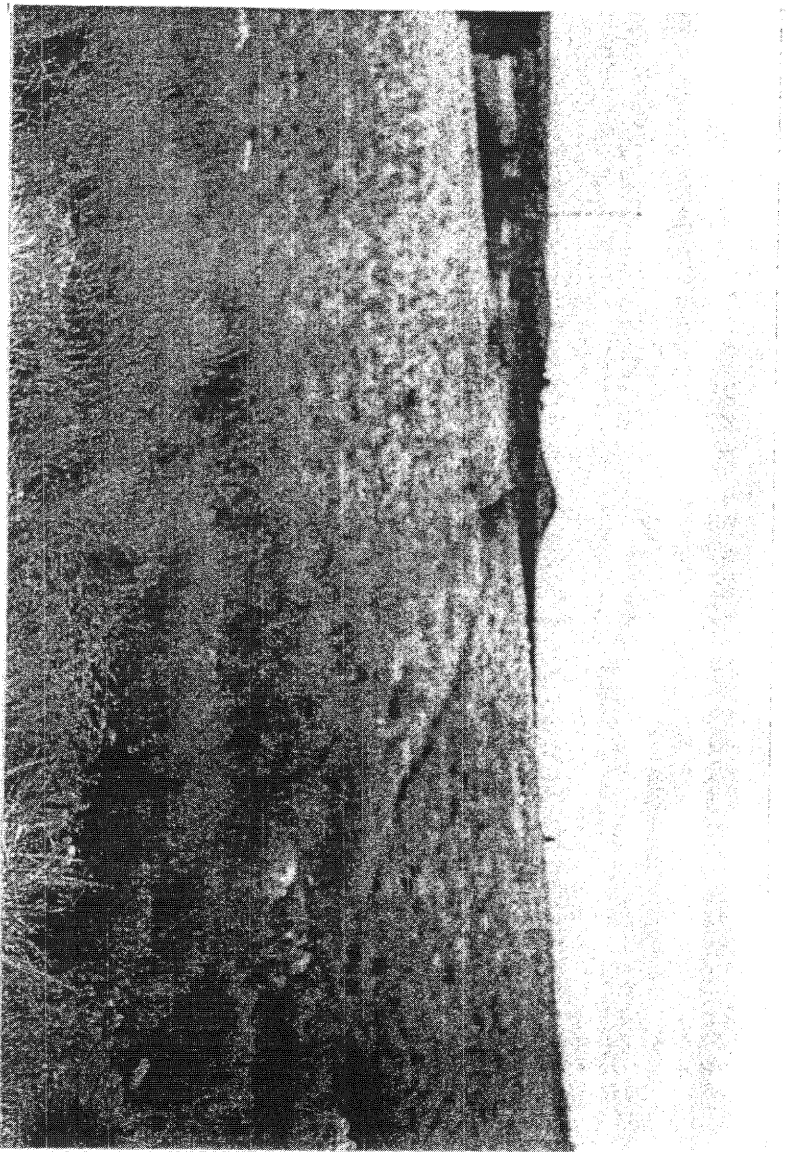


FIG 3