

**PHASE 1 HERITAGE IMPACT ASSESSMENT REPORT ON A  
PLANNED KALAHARI TOURISM FACILITY ON THE FARM  
DREGHORN 145 NEAR ASKAM, SIYANDA DISTRICT  
MUNICIPALITY, NORTHERN CAPE**

**Peter B Beaumont**

c/o Archaeology Department  
McGregor Museum  
PO Box 316  
8300 Kimberley  
Tel 053 - 842 0986 or 053 - 839 2700  
Fax 053 - 842 1433  
e-mail [se@museumsnc.co.za](mailto:se@museumsnc.co.za)

**CONSULTANT**

**Ms Marquerite Geldenhuys**

**MEG Environmental Impact Studies**

Tweedelaan 13  
Oosterville  
8801 Upington  
Tel 054 - 332 2781  
Fax 054 - 332 2781  
e-mail [megois@intekom.co.za](mailto:megois@intekom.co.za)

25 August 2006

## EXECUTIVE SUMMARY

The purpose of this study was to establish if any heritage sites were present in the immediate vicinity of a Kalahari tourism facility being built on the farm Dregghom 145 near Askam, Siyanda District Municipality, Northern Cape. Investigated was a ca. 8 ha terrain consisting of two interdune areas covered by red aeolian sand and a nearby calcrete exposure flanking the Molopo and adjacent to the existing farmhouse. Nothing was found between the dunes, the calcrete surface yielded two undiagnostic flakes, and no sites, fossil bones or graves of any age were seen. It is consequently considered that this ground has no significant heritage potential and that its development will have no impact on the archaeological resources of the Northern Cape.

## **BACKGROUND INFORMATION**

Mr Koortzen and family members on the farm Dragom 145 near Askam have latterly commenced constructing facilities for an increasing number of visitors who wish to savour the various attractions of the Kalahari. My role, in this regard was, at the request of M Geldenhuys of MEG Environmental Impact Studies, to establish if any heritage sites occurred in the affected areas, and, if so, to suggest how their degradation could be circumvented.

## **LOCAL ARCHAEOLOGY**

The Askam region is still archaeologically unexplored, with the nearest major site possibly being the Acheulean occurrence recently recorded at Eensaamheid Pan, some 80 km to the south (Masson 2006).

## **PROPERTY DESCRIPTION**

The examined areas, with a total extent of ca. 8 ha, comprised two abutting interdune basins some 1.5 km south–east of the farmhouse, and a calcrete ridge next to it and overlooking the Malopo riverbank (Figs 1 & 2). The former areas are sloping surfaces of red aeolian sand with a sparse grass and carnethorn cover (Figs 3 & 4), whereas the flat calcrete surface had only low grass and small shrubs on it. I spent almost an hour walking over these areas, with co-ordinates being 26° 51' 31" S, 20° 47' 10" E for the eastern side of the bushcamp and 26° 51' 31" S, 20° 46' 38" E for the calcrete ridge, where chalets are planned, on Thursday 3 August 2006.

## **SUPERFICIAL GEOLOGY**

The sediment sequence was seen to be many metres horizontally bedded calcrete, exposed and incised by the Molopo River, on which are the linear dunes, tending south–eastwards.

## HERITAGE FINDINGS

My random search of the interdune areas produced no artefacts. Two undiagnostic broken flakes in quartzite and silcrete came from the calcrete surface, but nowhere were there any sites, palaeontological bones or graves of any age.

## REFERENCES

Masson, J. 2006. Archaeology and geomorphology: Eensamheid Pan, Northern Cape. *The Digging Stick* 23 (1): 15 – 18.

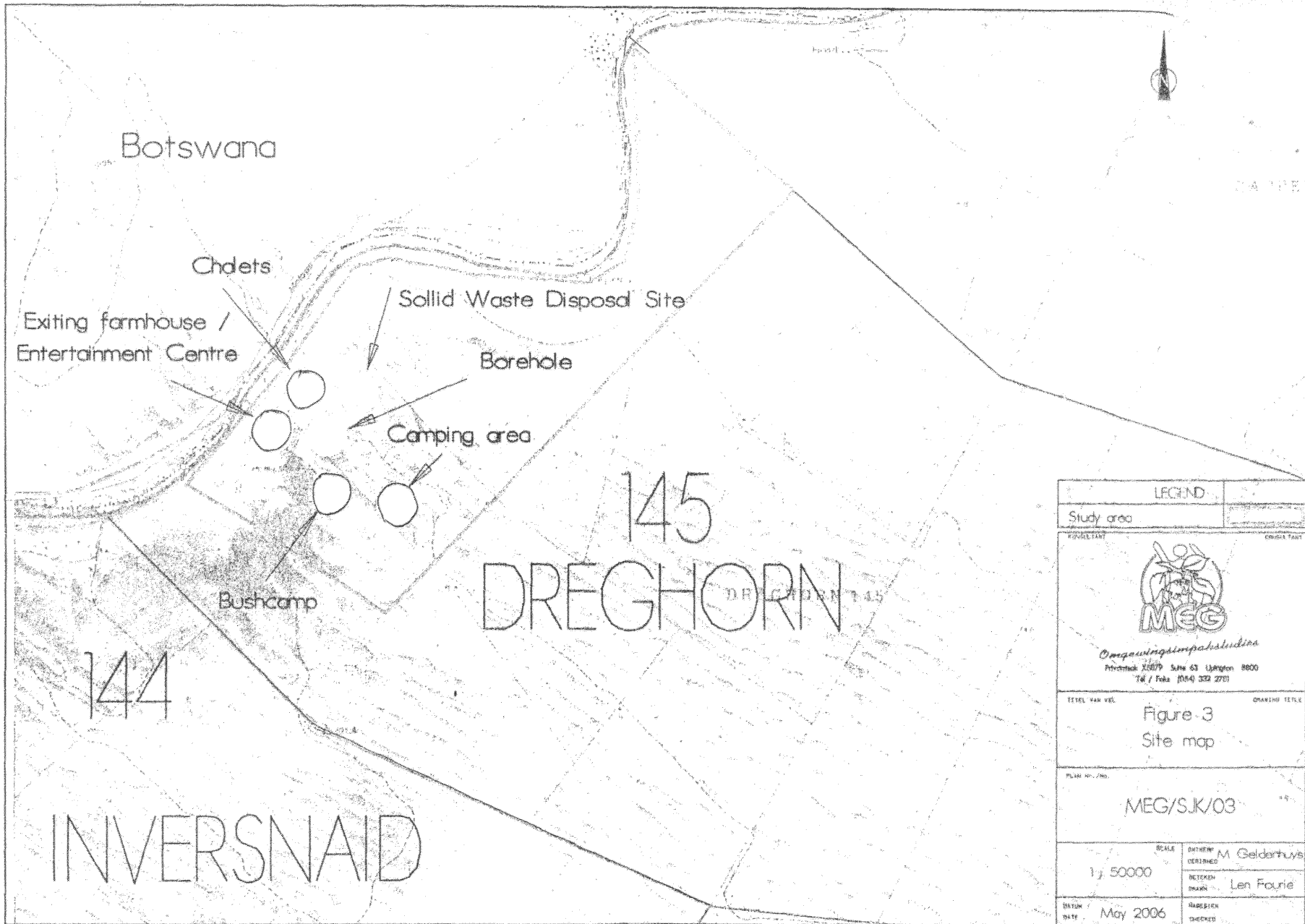
## CONCLUSIONS


The investigated terrain produced no significant heritage material and its use for housing will therefore have no impact on the archaeological resources of the Northern Cape.

## NOTES

- A copy of the locality maps and all appended Figures must accompany this report to SAHRA.
- Applications to SAHRA will not be processed unless accompanied by payment of R150 per application. SAHRA banking details are: ABSA, Branch Code: 312109; Current Account no.: 360 680 606.

Fig 1



LEGEND	
Study area	
PROJECT	CLIENT
 <b>MEG</b> <i>Omgawingsimpakstudies</i> Privatelek 33079, Selis 63, Ljansien 8800 Tel / Faks (014) 302 2701	
TITEL VAN VEL	OMSKRIJF TITEL
	Figure 3 Site map
PLAN NO./NO.	
	MEG/SJK/03
SCALE	DITTEWEP ONTREK
1:50000	M Gelderhuys
	DETEKEN DRAKER
	Len Fourie
DATE	MAKESIEK CHECKED
May 2006	



F19 2  
26.20 DD  
ASKHAM

INVERSNAIL 144

INVESTIGATED AREA

DRECHORN 145

CHOMDAL

Dreghon 1

Dreghon 2

Dreghon 3

107.0

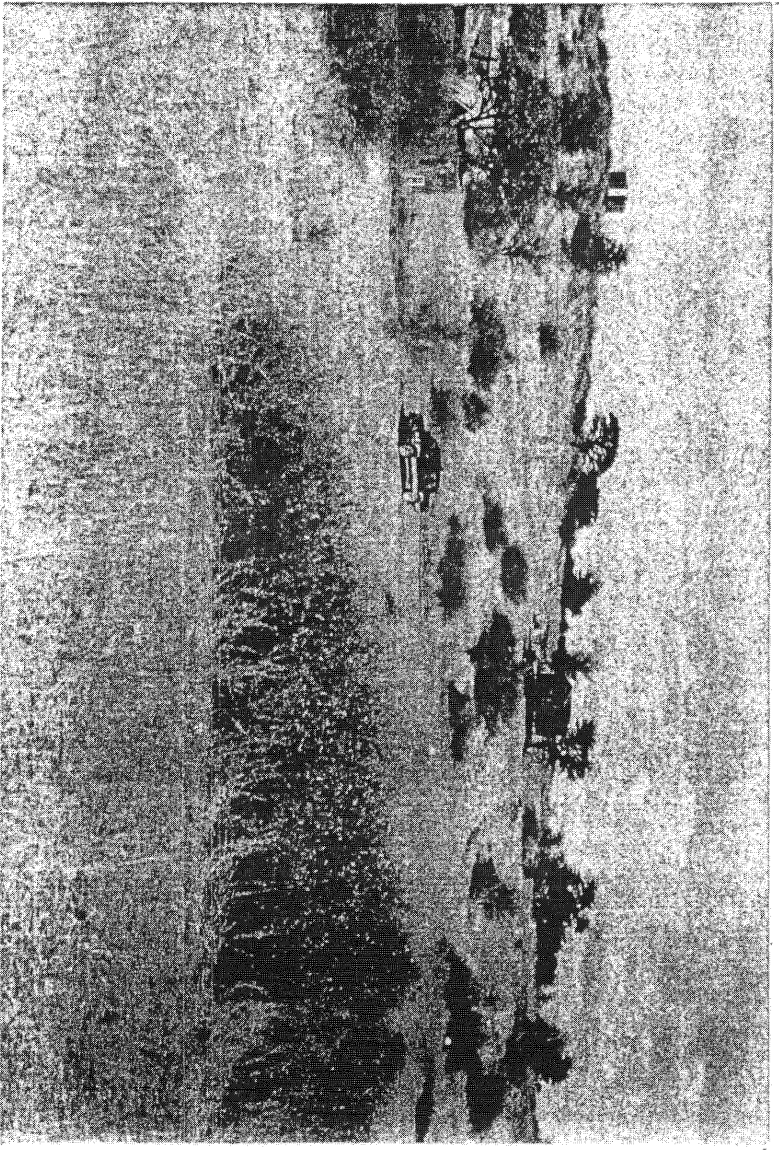


FIG 3

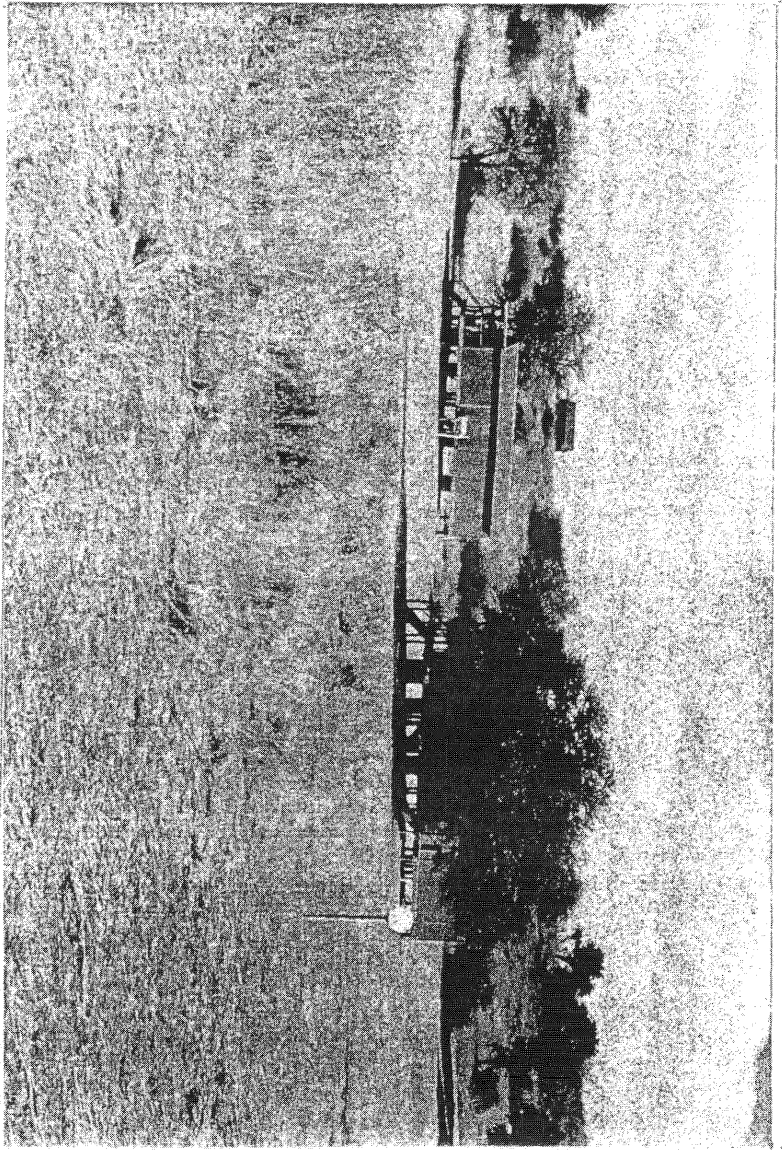


FIG 4