

**COBUS DREYER**  
Pr. Archaeologist/Heritage Specialist

P.O. Box 12910  
Brandhof  
9324  
dreyerj@telkomsa.net

Tel: 051-444 1187  
Fax: 051-444 4395  
Cell: 083 357 7982

6 FEBRUARY 2006

**FIRST PHASE ARCHAEOLOGICAL AND CULTURAL HERITAGE  
ASSESSMENT OF THE PROPOSED RESIDENTIAL  
DEVELOPMENTS AT THE FARM KRYNAUWSLUST 275,  
VREDE, FREE STATE**

**EXECUTIVE SUMMARY**

The new proposed residential developments are planned on the farm Krynauwslust 275 at Vrede, Free State.

The archaeological and cultural remains in the proposed area of development are severely damaged and presently of minor significance. No reason could be found to delay further developments and planning of the site.

**INTRODUCTION AND DESCRIPTION**

**INVESTIGATION**

The site for the proposed residential developments at Vrede was visited on 15 December 2005.

The area was examined for possible archaeological and historical material and to establish the potential impact on any cultural material that might be found. The Heritage Impact Assessment (HIA) is done in terms of the National Heritage Resources Act (NHRA), (25 of 1999) and under the Environmental Conservation Act, (73 of 1989).

## LOCALITY

The proposed residential developments are planned on the farm Krynauwslust 275 in the district of Vrede, Free State (Map 3).

The proposed area of development is located to the south west of the town and lies south of the Ascent road at the turn-off from the R546 to Standerton. The area is marked A – D on the enclosed map (Map 2).

The surface consists of short pristine grass cover and there is a low-lying marshy area and stream bed to the south.

The following GPS coordinates (Cape scale) were taken (2729DA 1987) (Surveyor-General 1973):

A	27°25'35"S 029°08'26"E	Altitude 1703m (Fig.1).
B	27°25'27"S 029°08'17"E	Altitude 1708m (Fig.2).
C	27°25'42"S 029°08'21"E	Altitude 1693m (Fig.3).
D	27°25'38"S 029°08'14"E	Altitude 1687m.
Stone Structure	27°25'32"S 029°08'17"E	Altitude 1703m (Fig.4).
Graveyard	27°25'30"S 029°08'22"E	Altitude 1706m (Fig.5).
Borrow pit	27°25'34"S 029°08'28"E	Altitude 1703m (Fig.6).
Dynamite depot	27°25'43"S 029°08'22"E	Altitude 1693m (Fig.7).
Stone-walling	27°25'47"S 029°08'20"E	Altitude 1682m (Fig.10).
Stone quarry	27°25'44"S 029°08'19"E	Altitude 1690m (Fig.9).

## RESULTS

The remains of a stone-walled structure, an old dynamite depot and a cast concrete feature were found. All these occurrences are in such a rundown state that there is nothing to preserve. No further indication of any archaeological or historical material was found at the site or in its vicinity.

## **IMPACT ASSESSMENT**

The proposed residential developments at Vrede will have no impact on any cultural heritage remains of the area.

Although it is not part of this investigation, the installation of water and sewer services are presently in progress to the north of the road from Vrede to Ascent. I could not ascertain if an Environmental Impact Assessment (EIA) was done for this area. There is also a graveyard and a borrow pit which seem to be of recent origin.

## **RECOMMENDATIONS**

No obvious reasons could be found to delay the commencement of further planning and development of the site and I recommend that the proposed residential developments at Memel should proceed.

## **MITIGATION**

Concerning the area for the proposed developments, no mitigation measures will be required.

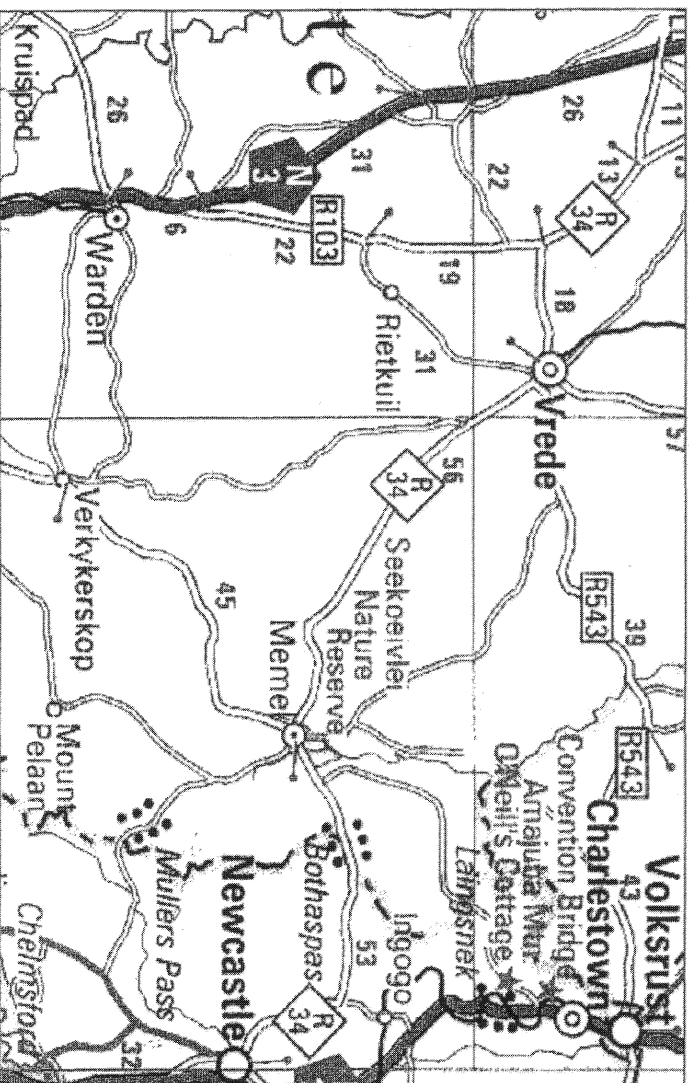
## **ACKNOWLEDGEMENTS**

I thank Celeste Slaughter of Bokamoso Environmental Consultants, Bloemfontein, for directing me to the site.

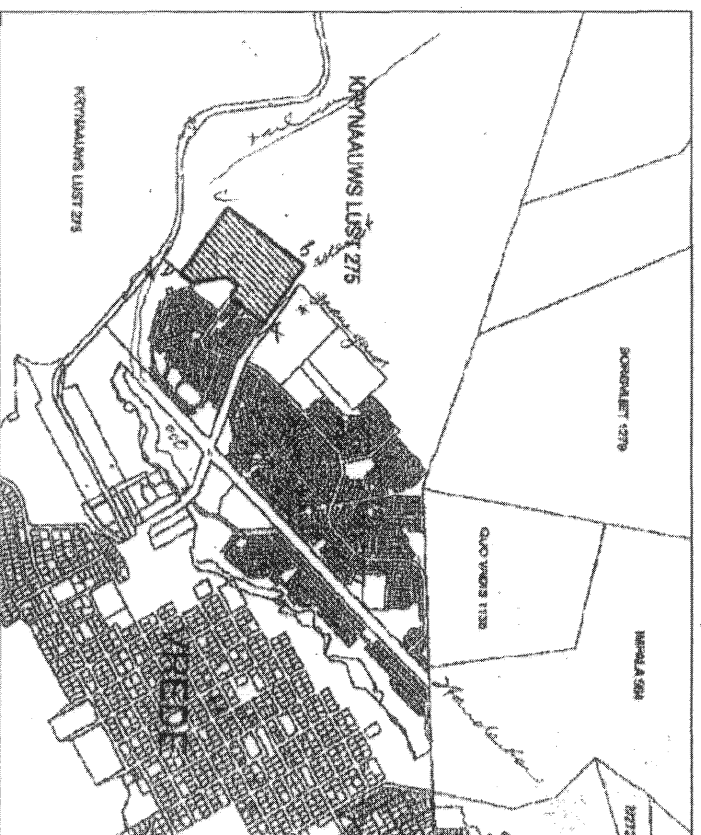
**SELECT BIBLIOGRAPHY:**

- DEACON, J. 1992. Archaeology for Planners, Developers and Local Authorities. Cape Town: National Monuments Council.
- DREYER, J.J.B. 1992. The Iron Age Archaeology of Doornpoort, Winburg, Orange Free State. Navorsinge van die Nasionale Museum, Bloemfontein, Vol.8(7):262-390.
- DREYER, J. 1996. Introduction to Free State Iron Age Archaeology. In: Guide to archaeological sites in the Free State and Lesotho. Southern African Association of Archaeologists (SAA3), 14th Biennial Conference, Bloemfontein, Post-conference tour 5-8 July 1996. Bloemfontein: National Museum.
- DREYER, J. 2000. Mountains and Rivers of the Free State - Manual for field research / Berge en Riviere van die Vrystaat – Handleiding vir veldnavorsing. Bloemfontein: University of the Free State, Department of Anthropology, Occasional Paper No. 2.
- HUMPHREYS, A.J.B. 1986. Searching for the past. Cape Town: David Phillip.
- MAGGS, T.M. 1976. Iron Age Communities of the Southern Highveld. Pietermaritzburg: Natal Museum.
- PISTORIUS, J.C.C. 1994. Eskom Archaeological Site Identification Guide. Johannesburg: Eskom.
- SURVEYOR-GENERAL O.F.S. 1973. Index of Orange Free State Farms. Bloemfontein.

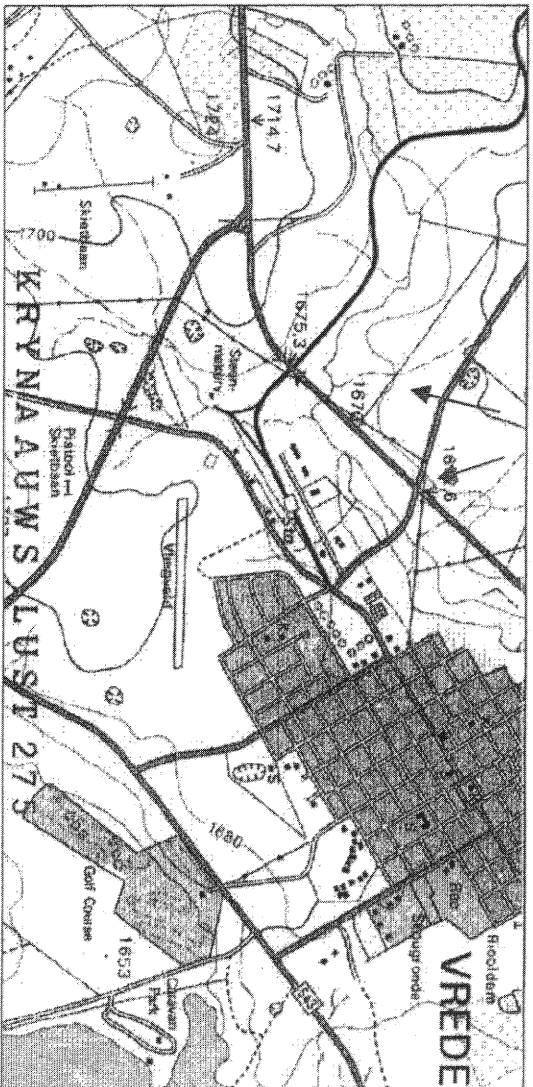
LIST OF ILLUSTRATIONS



Map 1 Locality of Vrede in relation to Memel, Warden, Newcastle and Volksrust.



Map 2 Locality of the proposed residential developments at Vrede marked A - D.



Map 3 Locality of the proposed residential developments at Vrede indicated by red arrow. Blue arrow designates installation of services already in progress (2729AC 1987).

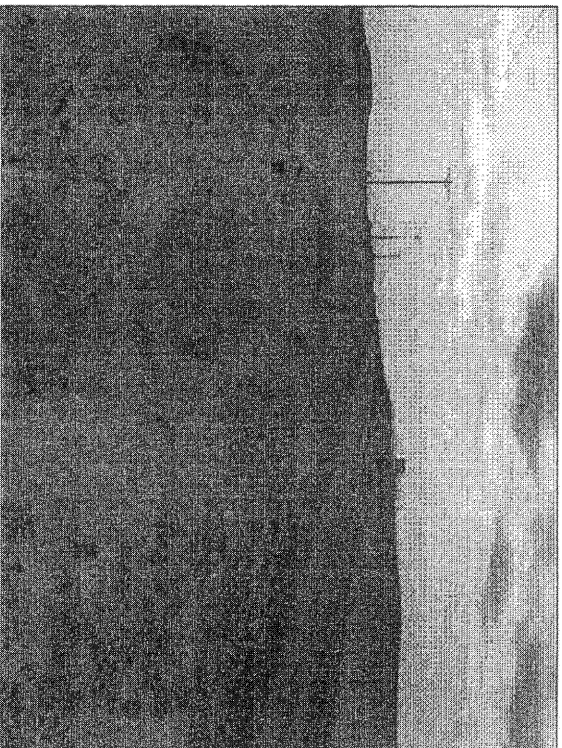


Fig. 1 View along the road to Ascent facing west.

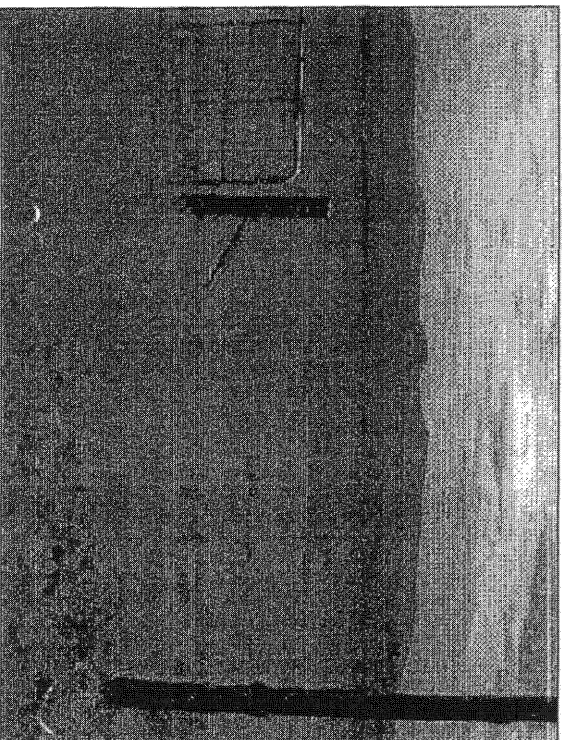


Fig 2 View down the slope towards the railway line in the south.

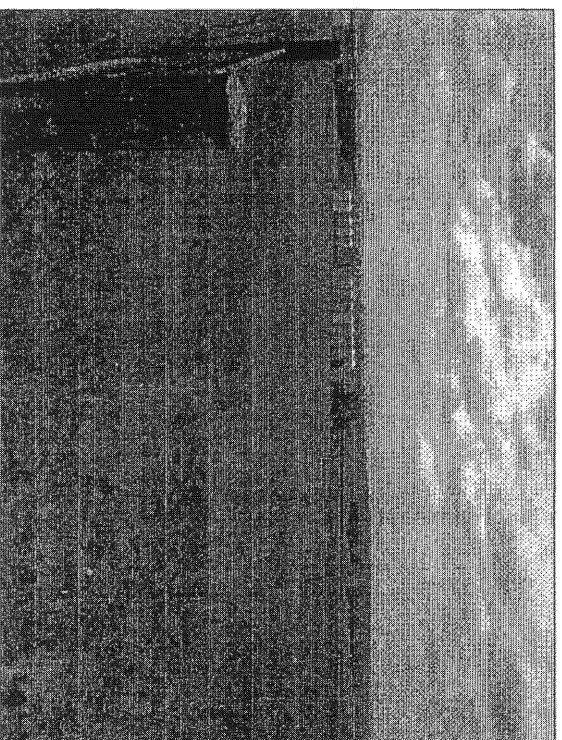


Fig. 3 Facing east towards Vrede.

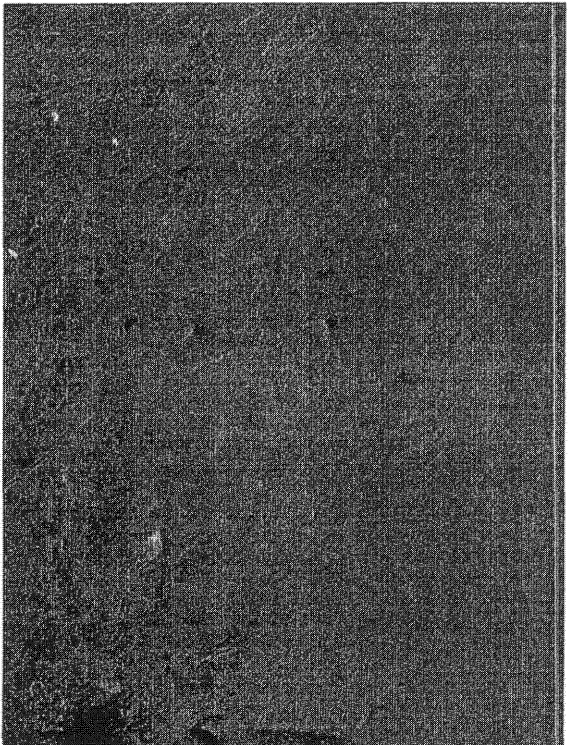


Fig.4 Remains of stone-walling on surface.

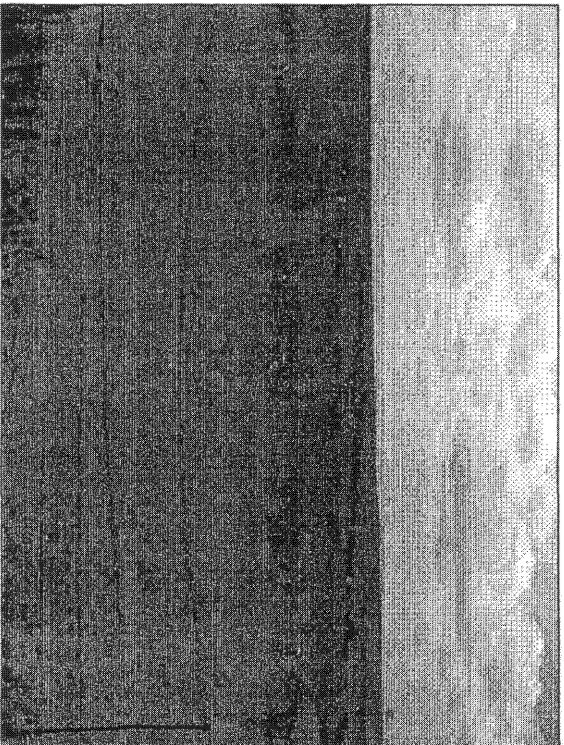


Fig.5 A graveyard across the road in another new development.





Fig 6 A borrow pit across the road in the new development.

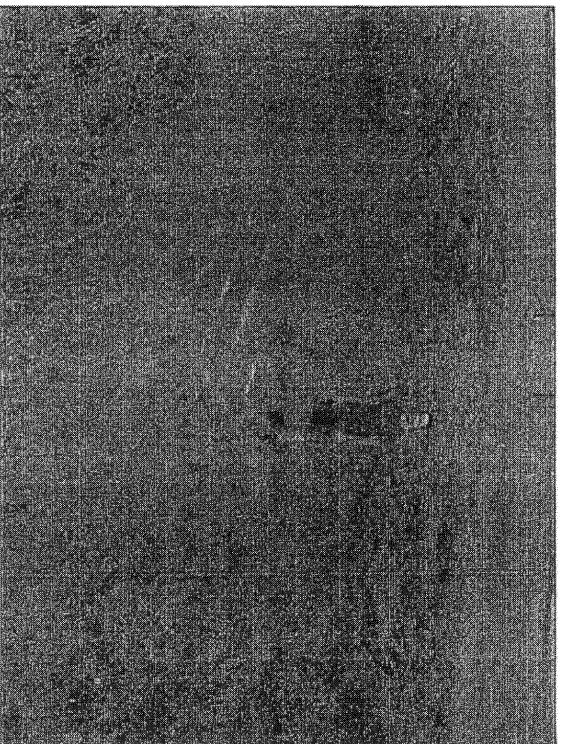


Fig 7 An old dynamite depot in the proposed new development at Vrede.

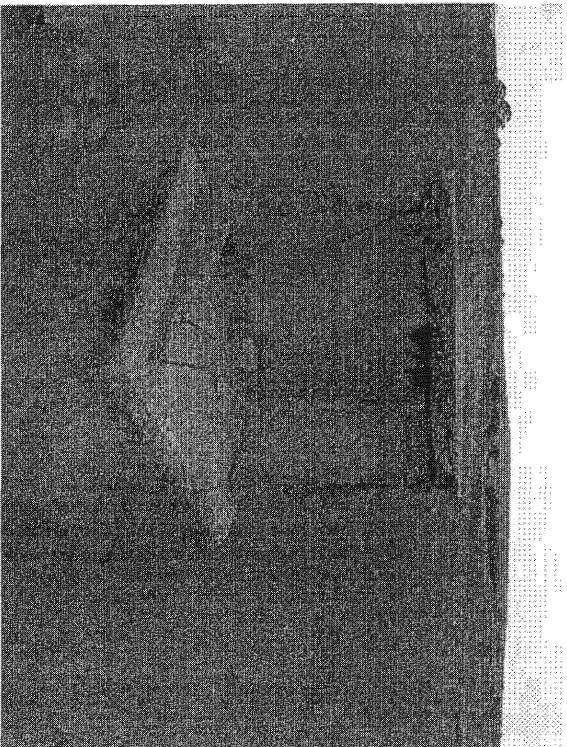


Fig.8 A cast concrete structure of unknown origin and purpose.

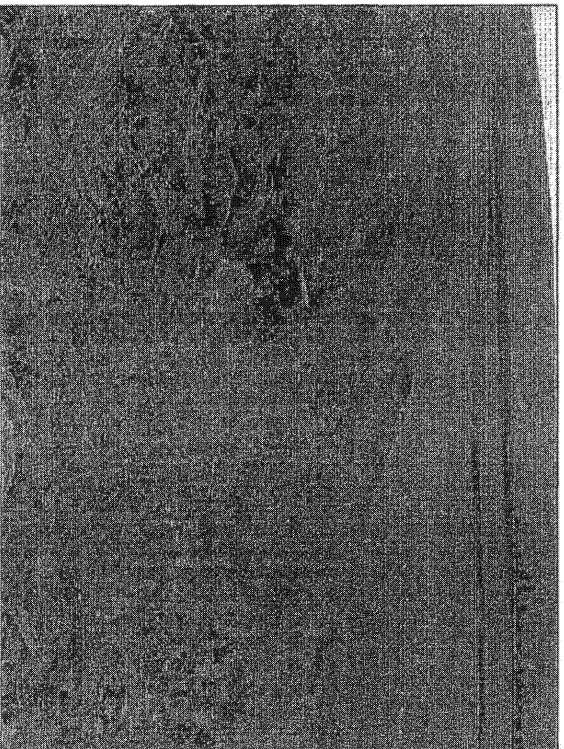


Fig.9 A stone quarry.

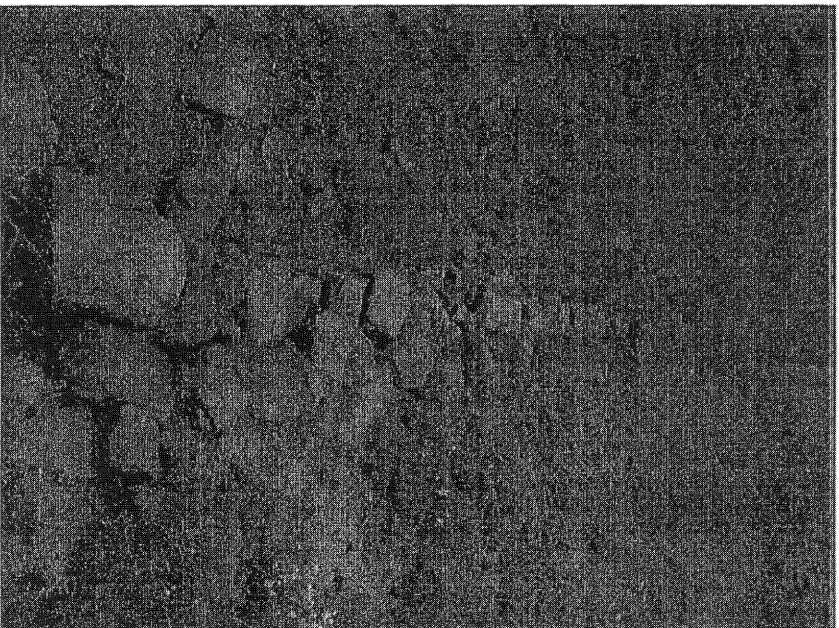


Fig. 10 Low stone-walling near the dynamite pit.