

**PHASE 1 HERITAGE IMPACT ASSESSMENT REPORT ON THE
FARM ZEEKOENEUS 357 NEAR NIEKERKSHOOP, KAROO
DISTRICT MUNICIPALITY, NORTHERN CAPE PROVINCE.**

Peter B Beaumont

c/o Archaeology Department
McGregor Museum
PO Box 316
8300 Kimberley
Tel 053 - 842 0986 or 053 - 839 2700
Fax 053 - 842 1433
e-mail se@museumsnc.co.za

CONSULTANT

Adriaan du Toit

African Water, Environmental & Mining Solutions

62 Kekewich Drive
Monument Heights
8301 Kimberley
Tel 053 – 831 5461
Fax 053 – 832 7944
e-mail watersolutions@absamail.co.za

2 October 2006

EXECUTIVE SUMMARY

The purpose of this study was to establish if any heritage sites were present on a portion of the farm Zeekoeneus 357 near Niekerkshoop, Karoo District Municipality, Northern Cape. Within the ca. 15 ha strip that was examined, Precambrian jaspilite with Tigers Eye lenses was noted to be thinly covered by red sand with occasional artefacts, but no sites, fossil bones or graves were seen. It is consequently considered that the examined area has no heritage significance and that envisaged further open cast diggings would have no impact on the archaeological resources of the Northern Cape.

BACKGROUND INFORMATION

Tigers Eye is a highly silicified form of asbestos that is, in South Africa, largely confined to ~2.4 billion year – old Asbestos Hills Banded Ironstone Formation (Kent 1980) outcrops between Griquatown and Prieska. On the farm Zeekoeneus 357 it occurs in the form of thin and discontinuous lenses in banded ironstone or jaspilite beds that occur on the eastern flank of high ground about 1 km WNW of the farmhouse (Fig 1). This study is part of an EMP that is being prepared by Adriaan du Toit for the current farm owner, Jannie Horn.

LOCAL ARCHAEOLOGY

The McGregor Museum has a small collection (MMK 1130) of Acheulean handaxes, based on jaspilite, from Griquatown (Goodwin & van Riet Lowe 1929). There is also an extensive handaxe site overlying an old river gravel exposure flanking a meander of the Orange River some 10 km upstream of Prieska, according to Adriaan du Toit. However, to my knowledge, no Stone Age localities have as yet been found in the broad vicinity of Niekerkshoop.

PROPERTY DESCRIPTION

The ca. 10 ha strip that was examined is on the farm Zeekoeneus 357 in the Karoo District Municipality about 16 km south of Niekerkshoop. It lies on the eastern slope of high ground in the southern Asbesberge, centred on 29° 28' 25" S, 22° 47' 40" E, as shown on the appended 1:50 000 map 2922 BD Niekerkshoop (Fig 2). Over 40 minutes was spent walking over two parts of the strip on Friday 22 September 2006, together with Annemarie van Heerden, Botany Department, McGregor Museum.

SUPERFICIAL GEOLOGY

The area was pocked by smallish (10 – 100 m²) pits where thin discontinuous lenses of Tigers Eye in the jaspilite had been followed downwards. Overlying those bedrock

deposits was a generally thin (0 – 20 cm) covering of rubble and reddish sand that forms the modern surface.

HERITAGE FINDINGS

My search within the two areas produced one prepared core and 8 – 9 irregular jaspilite flakes with fresh – lightly smoothed scar ridges. Of the latter, one was markedly endstruck and another had a few removals along two edges, resulting in a roughly pointed shape (Fig 3). A best guess is that all of the specimens are ascribable to one or more phases within the ESA. No actual sites, palaeontological bones or graves were seen.

CONCLUSIONS

The inspected areas revealed a very sparse scatter of lithics, but no signs of a site. My conclusion is therefore that the further mining there of Tigers Eye will have no impact on the archaeological resources of the Northern Cape. I note also that the mining of Tigers Eye is one of the few potential jobs available for the many unemployed people in Niekerkshoop.

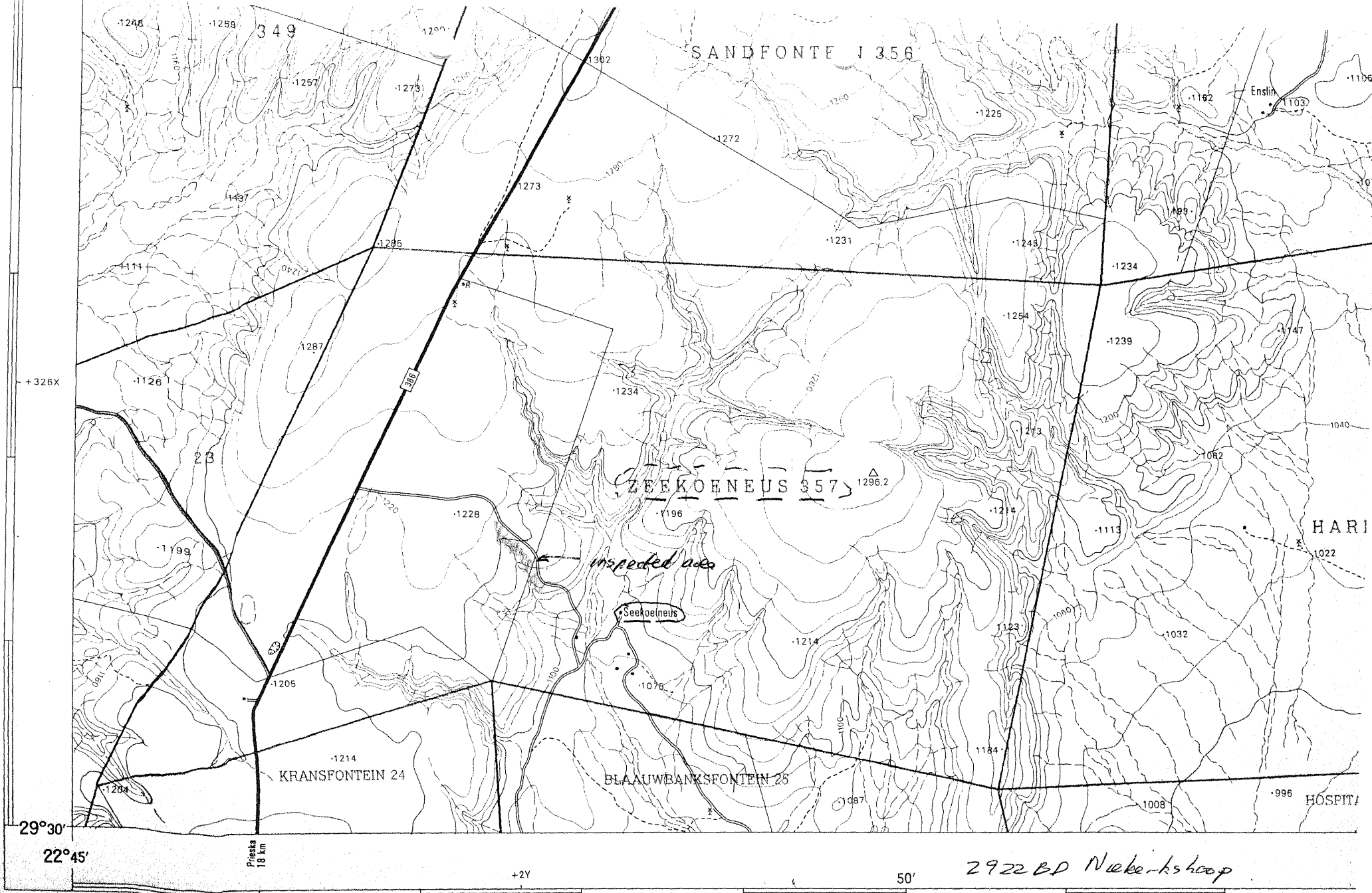
REFERENCES

- Goodwin, A.J.H. and van Riet Lowe, C. 1929. The Stone Age cultures of South Africa. *Ann. S. Afr. Mus.* **27**, 1 – 289.
- Kent, L.E. (ed) 1980. Stratigraphy of South Africa. Part 1. *Geol. Survey of S. Afr. Handbook* **8**, 1 – 690.

NOTES

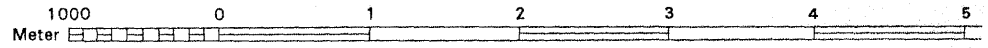
- A copy of the locality map and all appended Figures must accompany this report to SAHRA.
- Applications to SAHRA will not be processed unless accompanied by payment of R150 per application. SAHRA banking details are: ABSA, Branch Code: 312109; Current Account no.: 360 680 606.

FIG 1.



Gepubliseer deur die Hoofdirekteur van Opmetings en Kartering, Private Sak, Mowbray
 Published by the Chief Director of Surveys and Mapping, Private Bag, Mowbray

© Staatsuitgewer 1991 State Copyright



Gemiddelde magnetiese deklinasie 19°37' Wes van Ware Noord (Jan. 1991). Geen jaarlikse magnetiese verandering. (1985-1987).

Hoogtes is in meter bo gemiddeld
 Heights are in metres above me

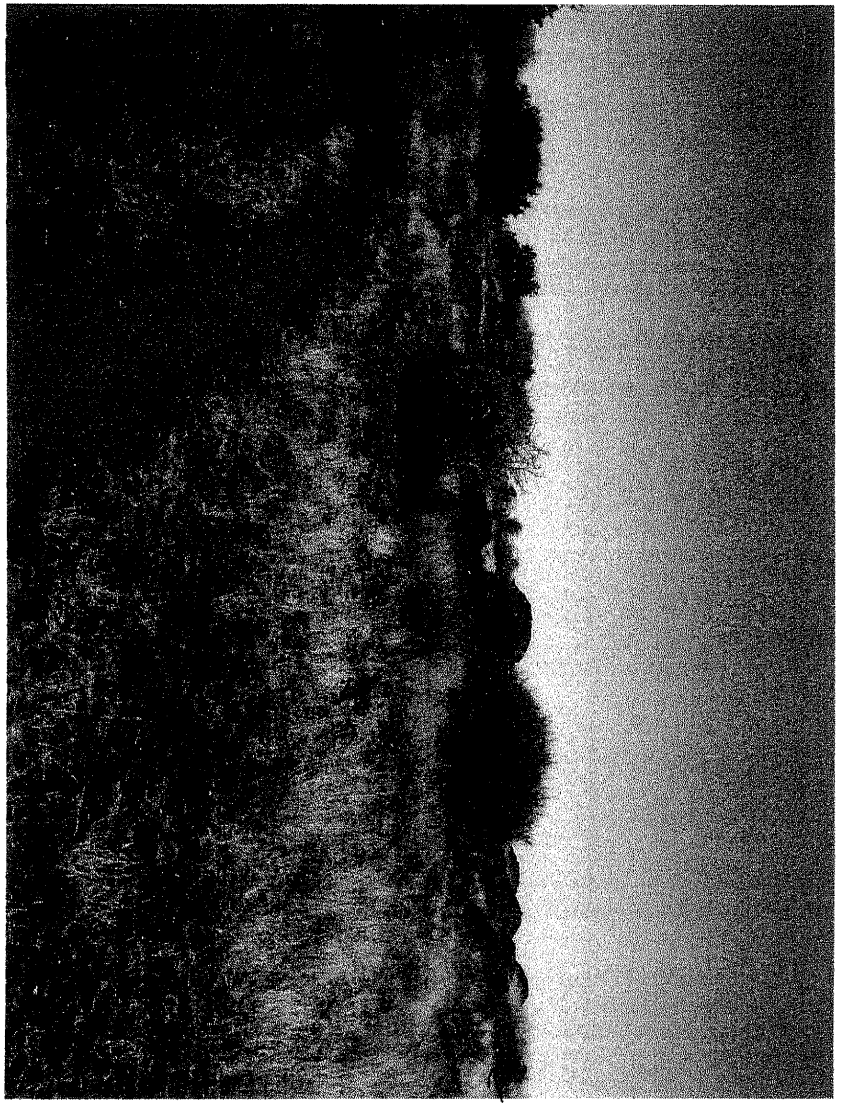


ENHANCED PARTS

PREPARED CORE

FLAKE WITH
REMOVALS
ALONG TWO
CONVERGENT
EDGES

FIG 3



BIG GINGS

FIG 2.