

**PHASE 1 HERITAGE IMPACT ASSESSMENT REPORT ON A  
PORTION OF THE FARM BLOUBOSKUIL 380 NEAR  
NIEKERKSHOOP, KAROO DISTRICT MUNICIPALITY, NORTHERN  
CAPE PROVINCE.**

**Peter B Beaumont**

c/o Archaeology Department

McGregor Museum

PO Box 316

8300 Kimberley

Tel 053 - 842 0986 or 053 - 839 2700

Fax 053 - 842 1433

e-mail [se@museumsnc.co.za](mailto:se@museumsnc.co.za)

**CONSULTANT**

**Adriaan du Toit**

**African Water, Environmental & Mining Solutions**

62 Kekewich Drive

Monument Heights

8301 Kimberley

Tel 053 – 831 5461

Fax 053 – 832 7944

e-mail [watersolutions@absamail.co.za](mailto:watersolutions@absamail.co.za)

12 December 2006

## EXECUTIVE SUMMARY

The purpose of this study was to establish if any heritage sites were present on a portion of the farm Blouboskuil 380 near Niekerkshoop, Karoo District Municipality, Northern Cape. Within the ca. 30 ha area that was examined, Precambrian jaspilite with Tigers Eye lenses was noted to be thinly covered by reddish sand with occasional artefacts. No sites, fossil bones or graves were seen and it is consequently considered that envisaged further open cast digging there will have no impact on the heritage resources of the Northern Cape.

## **BACKGROUND INFORMATION**

Tigers Eye is a highly silicified form of asbestos that is, in South Africa, largely confined to ~2.4 billion year – old Asbestos Hills Banded Ironstone Formation (Kent 1980) outcrops between Griquatown and Prieska. On the farm Blouboskuil 380 it occurs in the form of thin and discontinuous lenses in banded ironstone or jaspilite beds that occur on the crest of a flat – topped hill on its western side (Fig. 1). This study is part of an EMP that is being prepared by Adriaan du Toit for Mr. C.F. Marais.

## **LOCAL ARCHAEOLOGY**

The McGregor Museum has a small collection (MMK 1130) of Acheulean handaxes, based on jaspilite, from Griquatown (Goodwin & van Riet Lowe 1929). There is also an extensive handaxe site overlying old river gravels flanking a meander of the Orange River some 10 km upstream of Prieska, according to Adriaan du Toit. However, to my knowledge, no Stone Age localities have as yet been found in the broad vicinity of Niekerkshoop.

## **PROPERTY DESCRIPTION**

The area, ca. 30 ha in extent, that was examined is on the farm Blouboskuil 380, in the Karoo District Municipality about 16 km north – east of Niekerkshoop. It lies on the crest of a flat – topped hill in the southern Asbesberge, centred on 29° 12' 41" S, 22° 58' 47" E , as shown on the appended 1:50,000 map 2922 BB Springfield (Fig 1). Over an hour was spent walking over this area on Wednesday 15 November 2006 (Fig 2).

## **SUPERFICIAL GEOLOGY**

The area was pocked by smallish (10 – 50 m<sup>2</sup>) pits, where thin discontinuous lenses of Tigers Eye in the jaspilite had been followed downwards by mechanical means. Overlying the jaspilite was a generally thin (0 – 10 cm) covering of rubble and / or reddish sand that forms the modern surface.

## HERITAGE FINDINGS

My search within the inspected area produced seven jaspilite artefacts with lightly smoothed surfaces, namely five flakes and two irregular cores (Fig. 3). A best guess is that these specimens all fall within the ESA. No actual sites, palaeontological bones or graves were seen.

## CONCLUSIONS

The inspected area showed a low between – site lithic scatter on or in the thin surface sands, but no sign of a significant heritage occurrence. My conclusion is therefore that the further mining of Tigers Eye there will have no impact on the heritage resources of the Northern Cape. I note also that the mining of Tigers Eye is one of the few potential jobs for the many unemployed people in Niekerkshoop.

## REFERENCES

- Goodwin, A.J.H. and van Riet Lowe, C. 1929. The Stone Age cultures of South Africa. *Ann. S. Afr. Mus.* **27**, 1 – 289.
- Kent, L.E. (ed) 1980. Stratigraphy of South Africa. Part 1. *Geol. Survey of S. Afr. Handbook* **8**, 1 – 690.

## NOTES

- A copy of the locality map and all appended Figures must accompany this report to SAHRA.
- Applications to SAHRA will not be processed unless accompanied by payment of R150 per application. SAHRA banking details are: ABSA, Branch Code: 312109; Current Account no.: 360 680 606.



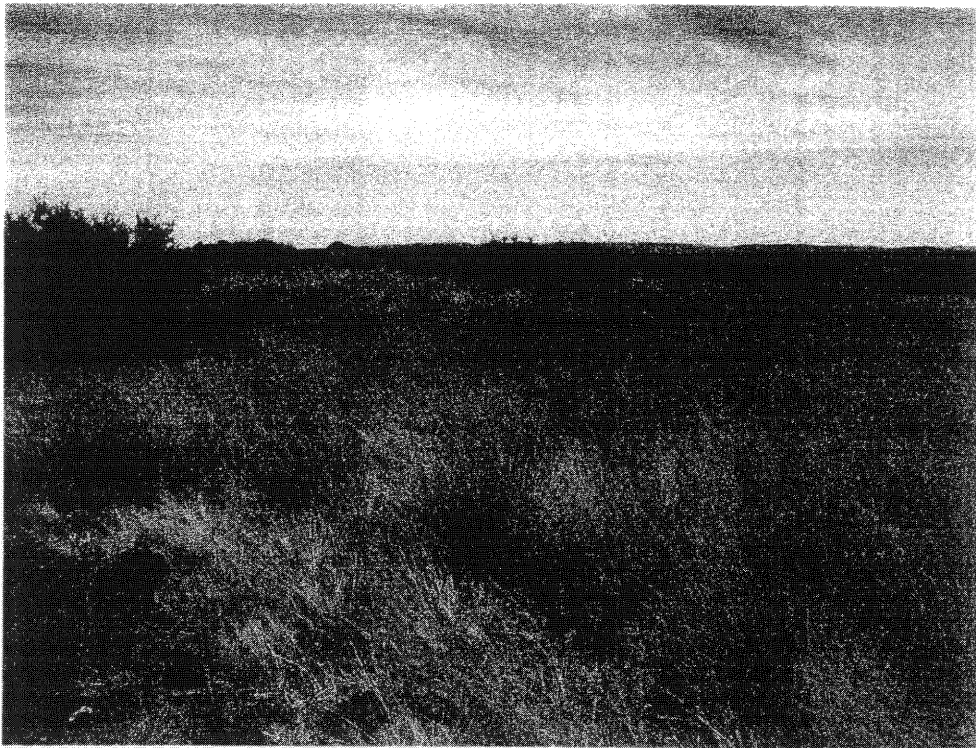


FIG 2.

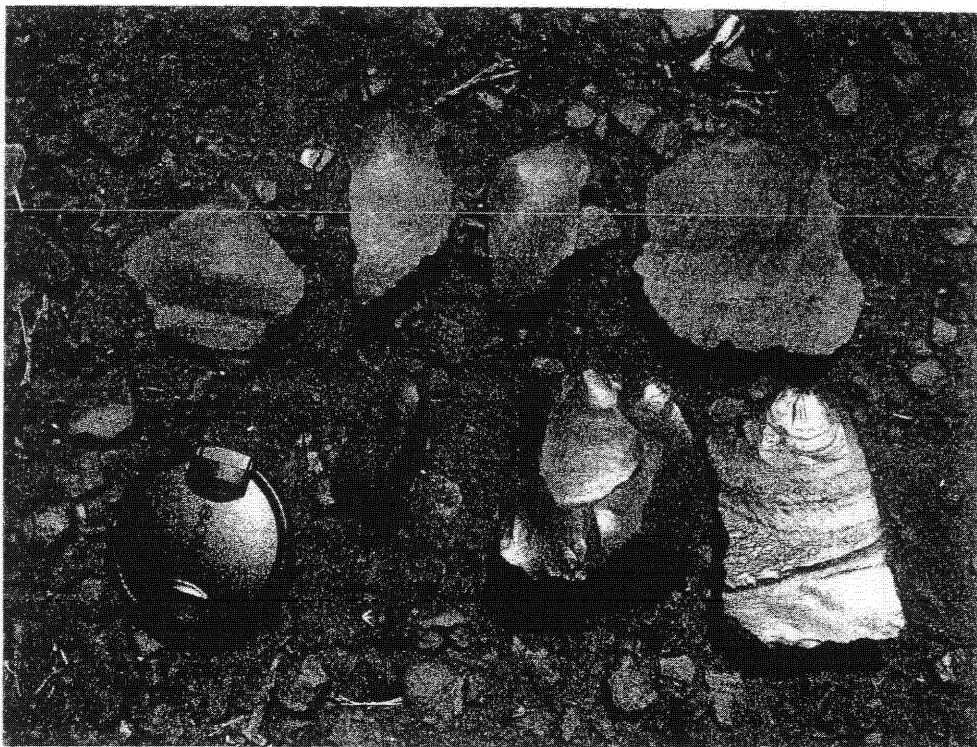


FIG 3