

LETTER OF RECOMMENDATION FOR THE EXEMPTION OF A FULL PHASE 1  
ARCHAEOLOGICAL HERITAGE IMPACT ASSESSMENT FOR THE PROPOSED  
DEVELOPMENT OF A PORTION OF THE FARM MENTORSKRAAL NO. 336, JEFFREY'S  
BAY.

Prepared for: Gertenbach Ecological Consultations

P. O. Box 963

Jeffreys Bay

6330

Compiled by: Dr. Johan Binneman

Department of Archaeology

Albany Museum

Somerset Street

Grahamstown 6139

June 2006

LETTER OF RECOMMENDATION FOR EXEMPTION OF A FULL PHASE 1 ARCHAEOLOGICAL  
HERITAGE IMPACT ASSESSMENT

The proposed development of a petrol station on a portion of the farm Mentorskraal No. 336, Jeffrey's Bay, is exempted from a full Phase 1 archaeological heritage impact assessment. It is believed that it is unlikely that any archaeological heritage remains will be found on the property previously used for agricultural purposes. Disturbances were also caused by the construction of the N1 national road and access roads.

**GENERAL REMARKS AND CONDITIONS**

It must be emphasised that this letter of recommendation for exemption of a full Phase 1 archaeological heritage impact assessment is based on the visibility of archaeological sites/material and may not therefore, reflect the true state of affairs. Sites and material may be covered by soil and vegetation and will only be located once this has been removed. In the unlikely event of such finds being uncovered, (during any phase of construction work), archaeologists must be informed immediately so that they can investigate the importance of the sites and excavate or collect material before it is destroyed (see attached list of possible archaeological sites and material). The onus is on the developer to ensure that this agreement is honoured in accordance with the National Heritage Act No. 25 of 1999.

It must also be clear that this letter of recommendation for exemption of a full Phase 1 archaeological heritage impact assessment will be assessed by the relevant heritage resources authority. The final decision rests with the heritage resources authority, which should give a permit or a formal letter of permission for the destruction of any cultural sites.

## APPENDIX: IDENTIFICATION OF ARCHAEOLOGICAL FEATURES AND MATERIAL FROM COASTAL AREAS: guidelines and procedures for developers

### 1. Shell middens

Shell middens can be defined as an accumulation of marine shell deposited by human agents rather than the result of marine activity. The shells are concentrated in a specific locality above the high-water mark and frequently contain stone tools, pottery, bone and occasionally also human remains. Shell middens may be of various sizes and depths, but an accumulation which exceeds 1 m<sup>2</sup> in extent, should be reported to an archaeologist.

### 2. Human Skeletal material

Human remains, whether the complete remains of an individual buried during the past, or scattered human remains resulting from disturbance of the grave, should be reported. In general the remains are buried in a flexed position on their sides, but are also found buried in a sitting position with a flat stone capping and developers are requested to be on the alert for this.

### 3. Fossil bone

Fossil bones may be found embedded in calccrete deposits at the site. Any concentrations of bones, whether fossilized or not, should be reported.

### 4. Stone artefacts

These are difficult for the layman to identify. However, large accumulations of flaked stones which do not appear to have been distributed naturally, should be reported. If the stone tools are associated with bone remains, development should be halted immediately and archaeologists notified.

### 5. Stone features and platforms

They come in different forms and sizes, but are easy to identify. The most common are an accumulation of roughly circular fire cracked stones tightly spaced and filled in with charcoal and marine shell. They are usually 1-2 metres in diameter and may represent cooking platform for shell fish. Others may resemble circular single row cobble stone markers. These are different sizes and may be the remains of wind breaks or cooking shelters.

### 6. Historical artefacts or features

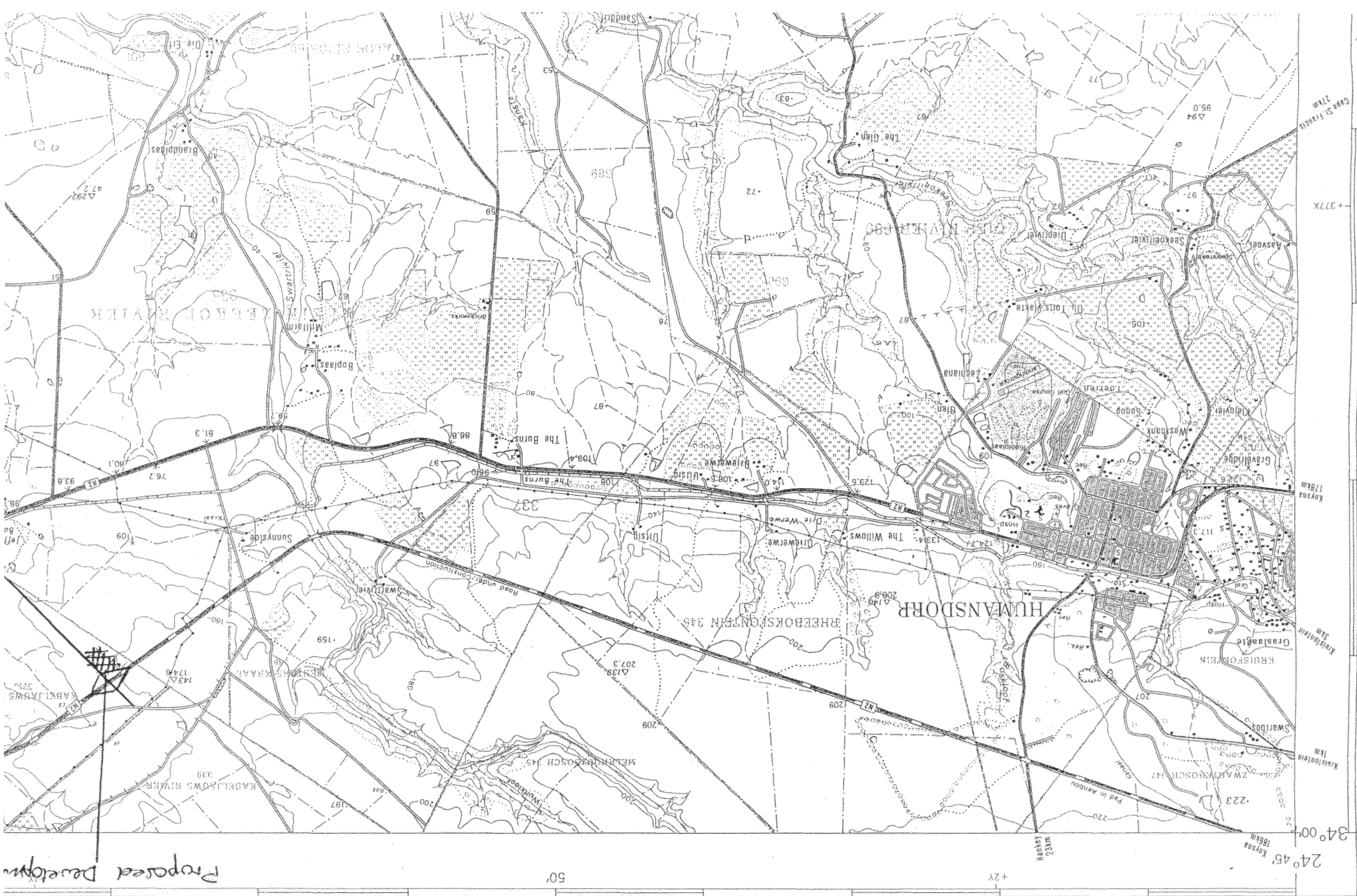
These are easy to identified and include foundations of buildings or other construction features and items from domestic and military activities.

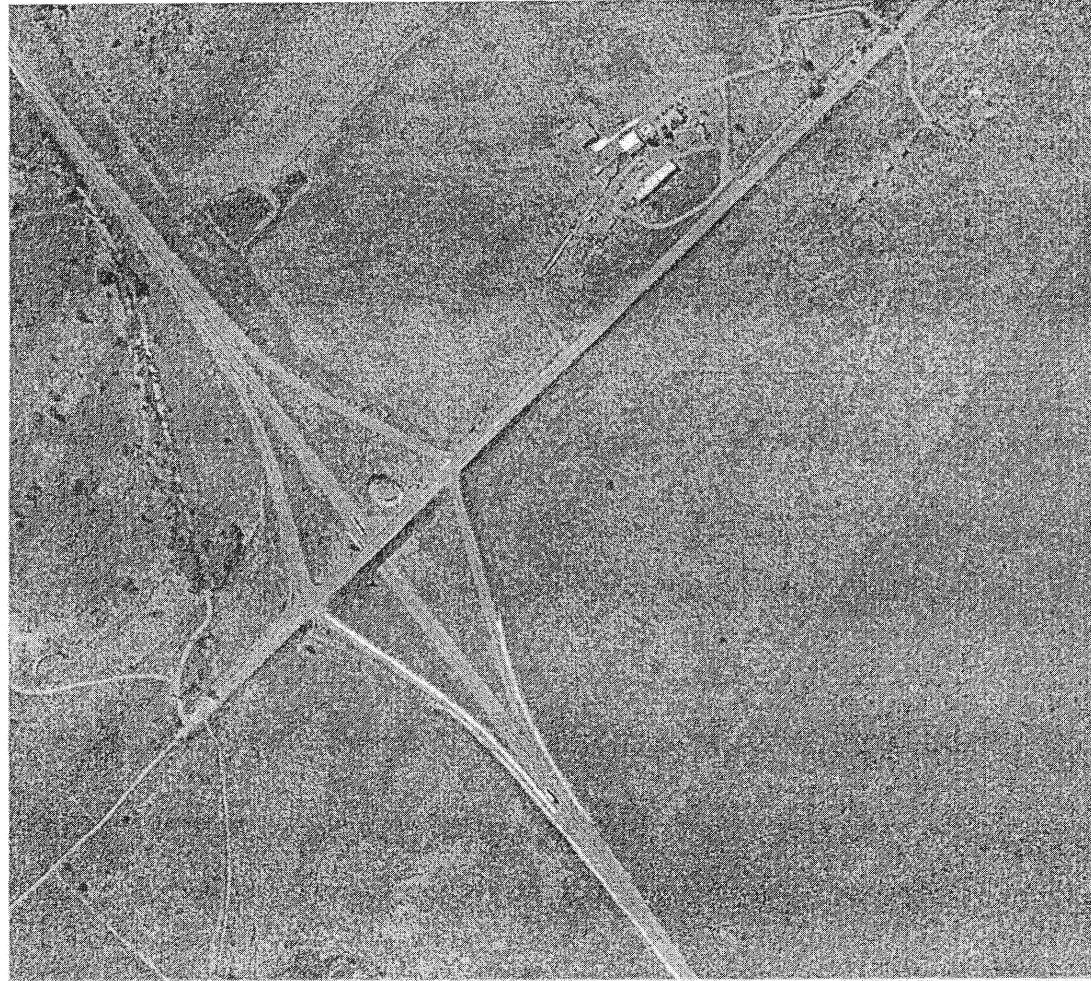
1 : 50 000 SUID-AFRIKA

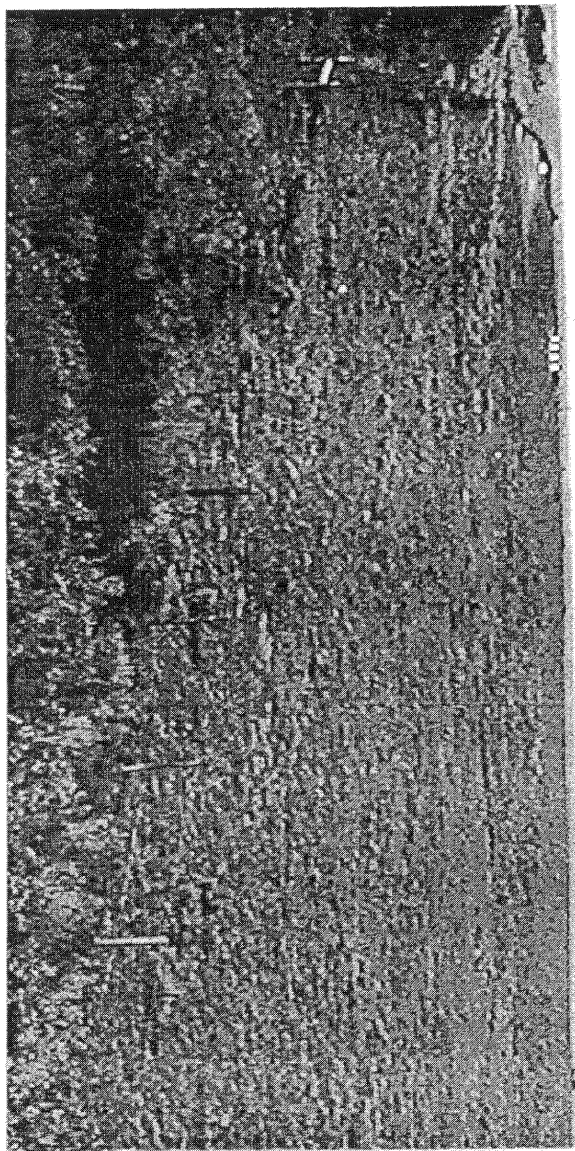
HOOGTES IN METER

3424BB HUMANSDORP

Proposed Development













**GAMTKWA**  
**KHOISAN FIRST NATION**  
( Association Incorporated Under Section 21 )

REGISTRATION NO. 2005/035372/08

Posbus 106  
Hankey  
6200

Tel. : 042-287 0664  
Sel. : 076 2016 283

10 JULIE 2006

Gertenbach Ecological Consultations  
Posbus 963  
Jeffreysbaai  
6330

Geagte Dr. Gertenbach,

**OMGEWINGSIMP AKSTUDIE : PLAAS MENTORSKRAAL 336**

Ons verwys na ons vorige korrespondensie in bostaande verband.

Besoek is afgedeel by bostaande terrein, en ons het ook insae gehad in die verslag wat uitgereik is deur Dr. Binneman.

Ons is tevrede met sy bevinding, en aanbevelings, en het geen beswaar teen 'n aansoek om vrystelling vir 'n fase I Argeologiese Impakstudie nie.

Danke vir die geleentheid om deel te neem aan die proses.

  
**HOOFTMAN M. WILLIAMS**  
**GAMTKWA STAM**