

SAVANA

9/2/04/0001

LETTER OF RECOMMENDATION (WITH CONDITIONS) FOR THE EXEMPTION OF A FULL PHASE 1 ARCHAEOLOGICAL HERITAGE IMPACT ASSESSMENT FOR THE SUBDIVISION AND REZONING OF ± 40HA OF PORTION 123 (PORTION OF PORTION 67) OF THE FARM "ESTATE KLEIN ZEEKOEI RIVIER" NO. 355, HUMANSDORP DISTRICT, (KOGUAMUNICIPALITY), FROM AGRICULTURAL USE TO INDUSTRIAL ZONE I.

Prepared for: Gertenbach Ecological Consultations

P.O. Box 963

Jeffrey's Bay

6330

Compiled by: Dr Johan Binneman

On behalf of: Eastern Cape Heritage Consultants

P.O. Box 689

Jeffrey's Bay

6330

Date: June 2006

LETTER OF RECOMMENDATION (WITH CONDITIONS) FOR EXEMPTION OF A FULL PHASE 1 ARCHAEOLOGICAL HERITAGE IMPACT ASSESSMENT

Status of the property

The proposed area for development was investigated on foot. The property under discussion is an narrow triangular area of land situated between the narrow gauge railway line and the main road between Humansdorp and Jeffrey's Bay. Except for a small area at the eastern boundary, the entire property is extensively ploughed. Investigation of the ploughed fields yielded a few Earlier Stone Age (ESA)artefacts in secondary context mixed with the surface gravels. These artefacts are in secondary context and are not considered of high cultural value. It is unlikely that any other archaeological heritage remains of any value will be found there *in situ* or of any contextual value.

The small area along the eastern boundary appears not to be ploughed in recently, but is also disturbed by numerous shallow muddy depressions. It seems to be a vleis/spring area and holes for drinking water for stock were dug in the white sandy soil. Whatever the case may be, a number of stone artefacts were found there. If this area was/is an old spring then the stone artefacts suggest that people my have lived at this water source in the past.

Conditions

Care should be taken during development in the 'vlei area', and should more artefacts and/or other archaeological material be found, such as bone and pot shards, an archaeologist immediately be informed to investigate.

Letter of recommendation

The proposed subdivision and rezoning of ± 40ha of portion 123 (portion of portion 67) of the farm “Estate Klein Zeekoei Rivier” No. 355, Humansdorp District, (Kouga Municipality), from agricultural use to industrial zone I, is exempted from a full Phase 1 archaeological heritage impact assessment. The proposed area for development is of low cultural sensitivity and it is only the ‘vlei area’ which may yield archaeological sites/material and care should be taken when the top soil and vegetation are removed there.

Note: This letter of recommendation **only** exempt the proposed development from a full Phase 1 archaeological heritage impact assessment, but **not** for other heritage impact assessments.

It must also be clear that this letter of recommendation for exemption of a full Phase 1 archaeological heritage impact assessment will be assessed by the relevant heritage resources authority. The final decision rests with the heritage resources authority, which should give a permit or a formal letter of permission for the destruction of any cultural sites.

The National Heritage Resources Act (Act No. 25 of 1999, section 35) requires a full Heritage Impact Assessment (HIA) in order that all heritage resources, that is, all places or objects of aesthetics, architectural, historic, scientific, social, spiritual linguistic or technological value or significance are protected. Thus any assessment should make provision for the protection of all these heritage components, including archaeology, shipwrecks, battlefields, graves, and structures older than 60 years, living heritage, historical settlements, landscapes, geological sites, palaeontological sites and objects

Community consultation

Consultation with the Gamt kwa KhoiSan First Nation, was conducted with Mr K. Reichert as required by the National Heritage Resources Act No. 25 of 1999, Section 38(3e). Mr K. Reichert will communicate their recommendations to Gertenbach Ecological Consultations.

GENERAL REMARKS AND CONDITIONS

It must be emphasised that this letter of recommendation for exemption of a full Phase 1 archaeological heritage impact assessment is based on the visibility of archaeological sites/material and may not therefore, reflect the true state of affairs. Sites and material may be covered by soil and vegetation and will only be located once this has been removed. In the unlikely event of such finds being uncovered, (during any phase of construction work), archaeologists must be informed immediately so that they can investigate the importance of the sites and excavate or collect material before it is destroyed (see attached list of possible archaeological sites and material). The *onus* is on the developer to ensure that this agreement is honoured in accordance with the National Heritage Act No. 25 of 1999.

APPENDIX: IDENTIFICATION OF ARCHAEOLOGICAL FEATURES AND MATERIAL FROM COASTAL AREAS: guidelines and procedures for developers

1. Shell middens

Shell middens can be defined as an accumulation of marine shell deposited by human agents rather than the result of marine activity. The shells are concentrated in a specific locality above the high-water mark and frequently contain stone tools, pottery, bone and occasionally also human remains. Shell middens may be of various sizes and depths, but an accumulation which exceeds 1 m² in extent, should be reported to an archaeologist.

2. Human Skeletal material

Human remains, whether the complete remains of an individual buried during the past, or scattered human remains resulting from disturbance of the grave, should be reported. In general the remains are buried in a flexed position on their sides, but are also found buried in a sitting position with a flat stone capping and developers are requested to be on the alert for this.

3. Fossil bone

Fossil bones may be found embedded in calccrete deposits at the site. Any concentrations of bones, whether fossilized or not, should be reported.

4. Stone artefacts

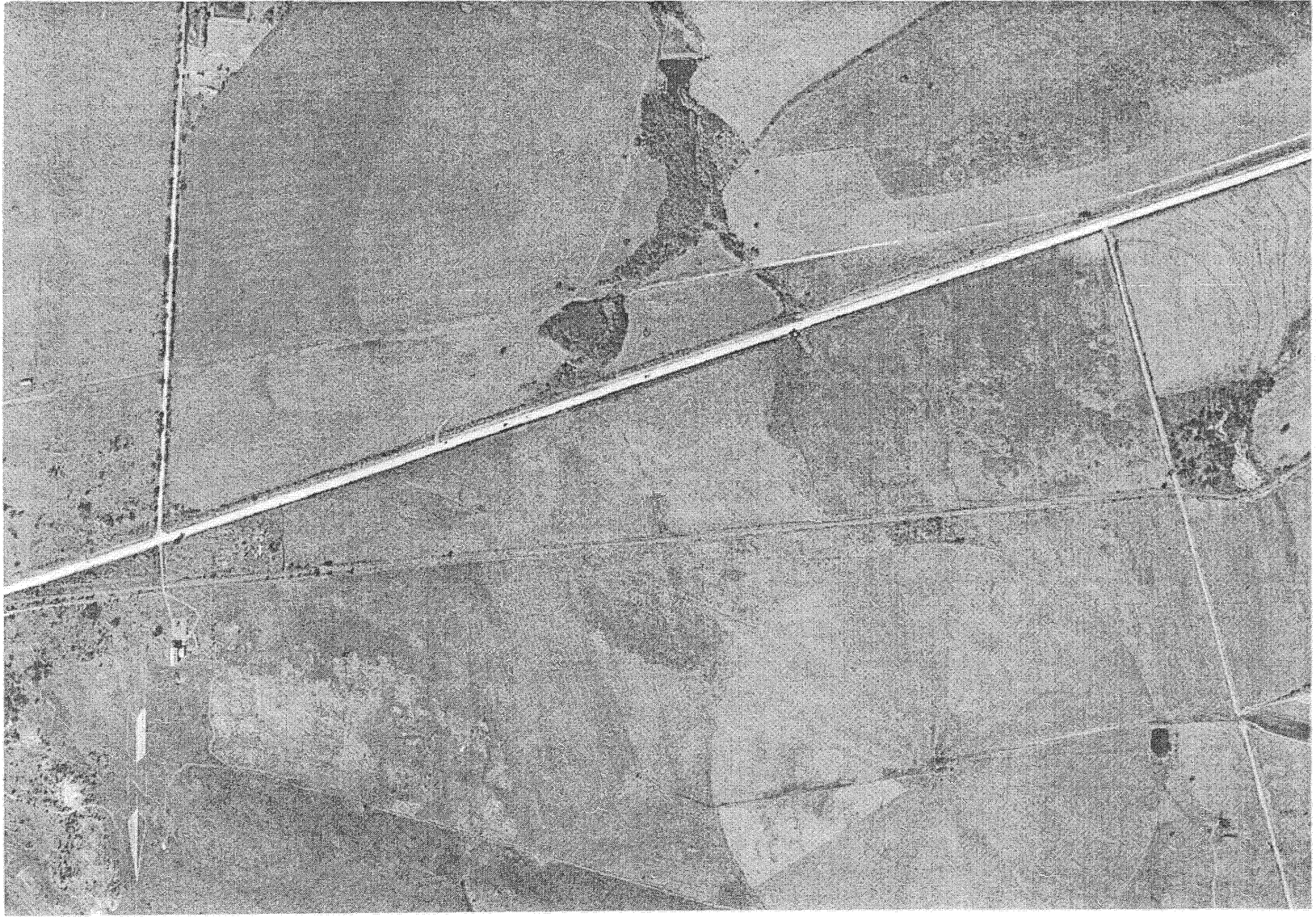
These are difficult for the layman to identify. However, large accumulations of flaked stones which do not appear to have been distributed naturally, should be reported. If the stone tools are associated with bone remains, development should be halted immediately and archaeologists notified.

5. Stone features and platforms

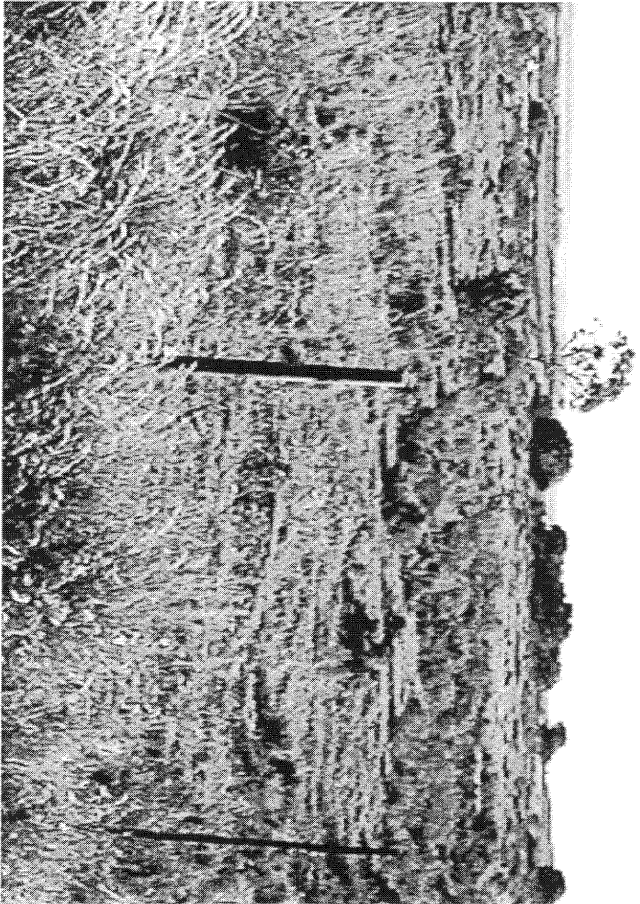
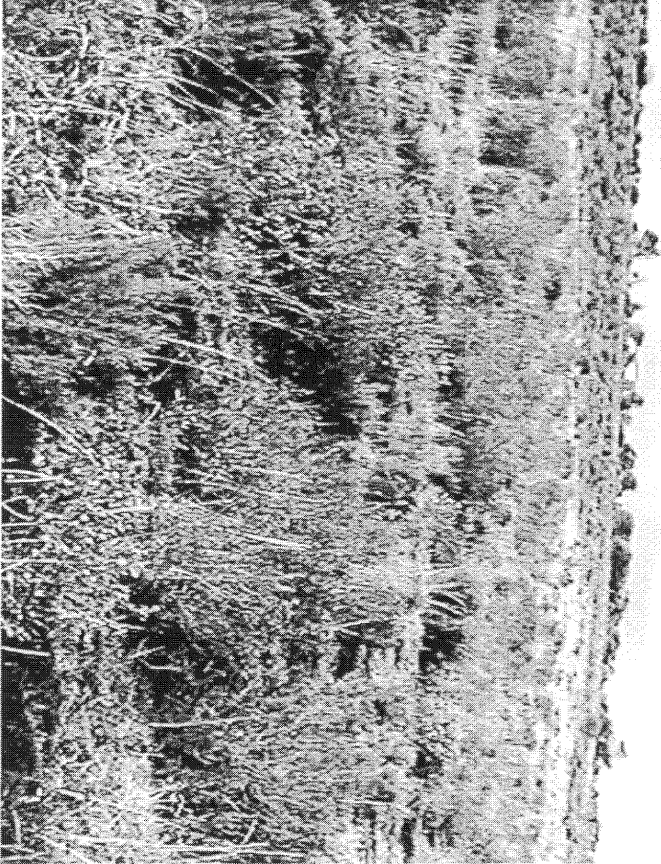
They come in different forms and sizes, but are easy to identify. The most common are an accumulation of roughly circular fire cracked stones tightly spaced and filled in with charcoal and marine shell. They are usually 1-2 metres in diameter and may represent cooking platform for shell fish. Others may resemble circular single row cobble stone markers. These are different sizes and may be the remains of wind breaks or cooking shelters.

6. Historical artefacts or features

These are easy to identified and include foundations of buildings or other construction features and items from domestic and military activities.



⑤ *Strophomena* *Mam* *Zakharov*.





GAMTKWA
KHOISAN FIRST NATION
(Association Incorporated Under Section 21)

REGISTRATION NO. 2005/035372/08

Posbus 106
Hankey
6200

Tel. : 042-287 0664
Sel. : 076 2016 283

10 JULIE 2006

Gertenbach Ecological Consultations
Posbus 963
Jeffreysbaai
6330

Geagte Dr. Gertenbach,

OMGEWINGSIMPAKSTUDIE : GEDDELTE ⁶⁷ VAN DIE PLAAS KLEIN ZEEKOE RIVIER

Ons verwys na ons vorige korrespondensie in bostaande verband.

Besoek is afgelê by bostaande terrein, en ons het ook insae gehad in die verslag wat uitgereik is deur Dr. Binneman.

Ons is tevrede met sy bevinding, en aanbevelings, en het geen beswaar teen 'n aansoek om vrystelling vir 'n fase 1 Argeologiese Impakstudie nie.

Ons wil ook graag die feit beklemtoon dat ons nie ten gunste is van enige ontwikkeling van die fonteinarea nie, weens die argeologiese sensitiwiteit daarvan. Sou hierdie area geoormerk wees om deel te vorm van die ontwikkeling, versoek ons dat 'n vergadering belê word om die aangeleentheid te bespreek.

Dankie vir die geleentheid om deel te neem aan die proses.

HOOFMAN M. WILLIAMS
GAMTKWA STAM