

LETTER OF RECOMMENDATION (WITH CONDITIONS) FOR THE EXEMPTION OF A FULL PHASE 1 ARCHAEOLOGICAL HERITAGE IMPACT ASSESSMENT FOR THE SUBDIVISION AND REZONING OF PORTION 28 OF THE FARM "MELKHOUTE KRAAL" NO. 254 IN KAREDOUW (KOUKAMMA MUNICIPALITY), FROM AGRICULTURAL USE TO RESIDENTIAL ZONES I & II AND OPEN SPACE ZONES I & II AND TO DEVELOPMENT GROUP HOUSES, DWELLING HOUSES AND A NATURE RESERVE.

Prepared for: Gertenbach Ecological Consultations

P.O. Box 963

Jeffrey's Bay

6330

Compiled by: Dr Johan Binneman

On behalf of: Eastern Cape Heritage Consultants

P.O. Box 689

Jeffrey's Bay

6330

Date: June 2006

LETTER OF RECOMMENDATION (WITH CONDITIONS) FOR EXEMPTION OF A FULL PHASE 1 ARCHAEOLOGICAL HERITAGE IMPACT ASSESSMENT

Status of the property

The proposed area for development was investigated on foot. The proposed development will take place on top, along the southern slopes and foot of a small hill. The top of the hill comprise a mix of disturbed to pristine fynbos vegetation. The southern slopes and the foot of the hill are disturbed by previous agricultural activities such as ploughing and stock keeping. Apart from the occasional Earlier and Middle Stone Age stone artefacts, no other archaeological sites/material were found. It is highly unlikely that any other archaeological heritage remains of any value will be found *in situ* or of any contextual value.

Letter of recommendation

The proposed subdivision and rezoning of portion 28 of the farm "Melkhoute Kraal" No. 254 in Kareedouw (Koukamma Municipality), from agricultural use to residential zones I & II and open space zones I & II and to development group houses, dwelling houses and a nature reserve, is exempted from a full Phase 1 archaeological heritage impact assessment. The proposed area for development is of very low cultural sensitivity and it is believed that it is highly unlikely that any archaeological heritage remains will be found on the property previously used for agricultural purposes or on the fynbos areas.

Note: This letter of recommendation **only** exempt the proposed development from a full Phase 1 archaeological heritage impact assessment, but **not** for other heritage impact assessments.

It must also be clear that this letter of recommendation for exemption of a full Phase 1 archaeological heritage impact assessment will be assessed by the relevant heritage resources authority. The final decision rests with the heritage resources authority, which should give a permit or a formal letter of permission for the destruction of any cultural sites.

The National Heritage Resources Act (Act No. 25 of 1999, section 35) requires a full Heritage Impact Assessment (HIA) in order that all heritage resources, that is, all places or objects of aesthetics, architectural, historic, scientific, social, spiritual linguistic or technological value or significance are protected. Thus any assessment should make provision for the protection of all these heritage components, including archaeology, shipwrecks, battlefields, graves, and structures older than 60 years, living heritage, historical settlements, landscapes, geological sites, palaeontological sites and objects

Community consultation

Consultation with the Gamtkwa Khoisan First Nation, was conducted with Mr K. Reichert as required by the National Heritage Resources Act No. 25 of 1999, Section 38(3e). Mr K. Reichert will communicate their recommendations to Gertenbach Ecological Consultations.

GENERAL REMARKS AND CONDITIONS

It must be emphasised that this letter of recommendation for exemption of a full Phase 1 archaeological heritage impact assessment is based on the visibility of archaeological sites/material and may not therefore, reflect the true state of affairs. Sites and material may be covered by soil and vegetation and will only be located once this has been removed. In the unlikely event of such finds being uncovered, (during any phase of construction work), archaeologists must be informed immediately so that they can investigate the importance of the sites and excavate or collect material before it is destroyed (see attached list of possible archaeological sites and material). The *onus* is on the developer to ensure that this agreement is honoured in accordance with the National Heritage Act No. 25 of 1999.

It must also be clear that this letter of recommendation for exemption of a full Phase 1 archaeological heritage impact assessment will be assessed by the relevant heritage resources authority. The final decision rests with the heritage resources authority, which should give a permit or a formal letter of permission for the destruction of any cultural sites.

APPENDIX: IDENTIFICATION OF ARCHAEOLOGICAL FEATURES AND MATERIAL FROM INLAND AREAS: guidelines and procedures for developers

1. Caves and shelters

Often these features were inhabited by people in the past, such as the San and KhoiSan, and contain valuable archaeological deposits. These deposits and the remains such as stone artefacts, bone, pot shards and ornaments are protected by legislation and must not be damaged by digging or may artefacts be collected. Contact the nearest archaeologist for information and advise regarding the protection and conservation of these features.

2. Rock art

Rock paintings are often found in caves, rock shelters and also in the open on boulders. They are and easy to recognized and must be treated with care. No water or any other substances must be apply to the paintings. Contact the nearest archaeologist to provide information and advise regarding the protection and conservation of rock art.

3. Human Skeletal material

Human remains, whether the complete remains of an individual buried during the past, or scattered human remains resulting from disturbance of the grave, should be reported. In general the remains are buried in a flexed position on their sides, but are also found buried in a sitting position with a flat stone capping and developers are requested to be on the alert for this.

4. Stone artefacts

These are difficult for the layman to identify. However, large accumulations of flaked stones which do not appear to have been distributed naturally, should be reported. If the stone tools are associated with bone remains, development should be halted immediately and archaeologists notified

5. Fossil bone

Fossil bones may be found embedded in geological deposits. Any concentrations of bones, whether fossilized or not, should be reported.

6. Stone features and platforms

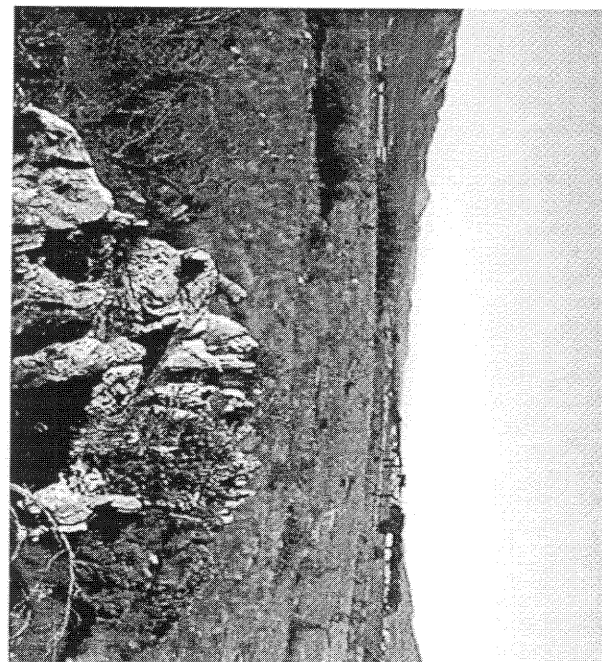
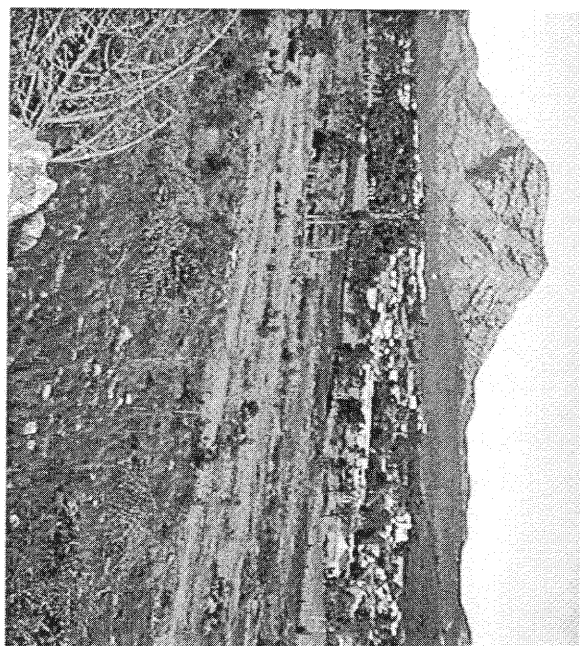
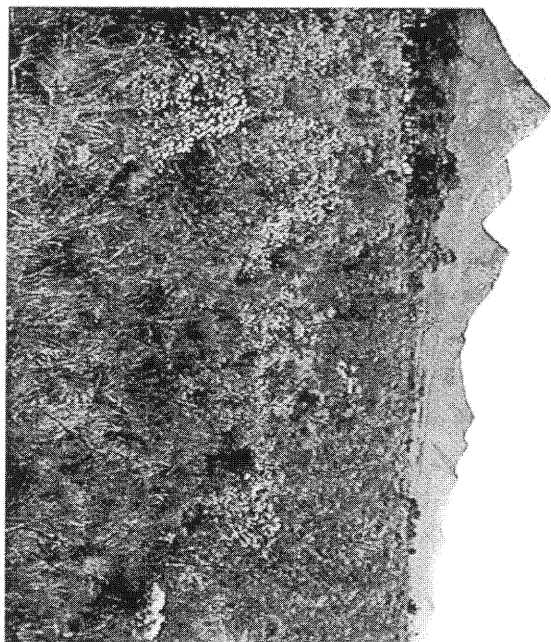
They come in different forms and sizes, but are easy to identify. The most common are an accumulation of roughly circular fire cracked stones tightly spaced and filled in with charcoal. and marine shell. They are usually 1-2 metres in diameter and may represent cooking platforms. Others may resemble circular single row cobble stone markers. These are different sizes and may be the remains of wind breaks or cooking shelters.

7. Historical artefacts or features

These are easy to identified and include foundations of buildings or other construction features and items from domestic and military activities.

500





③ methylcobalamin. Neurotrans.

BASE MAP SUPPLIED BY:

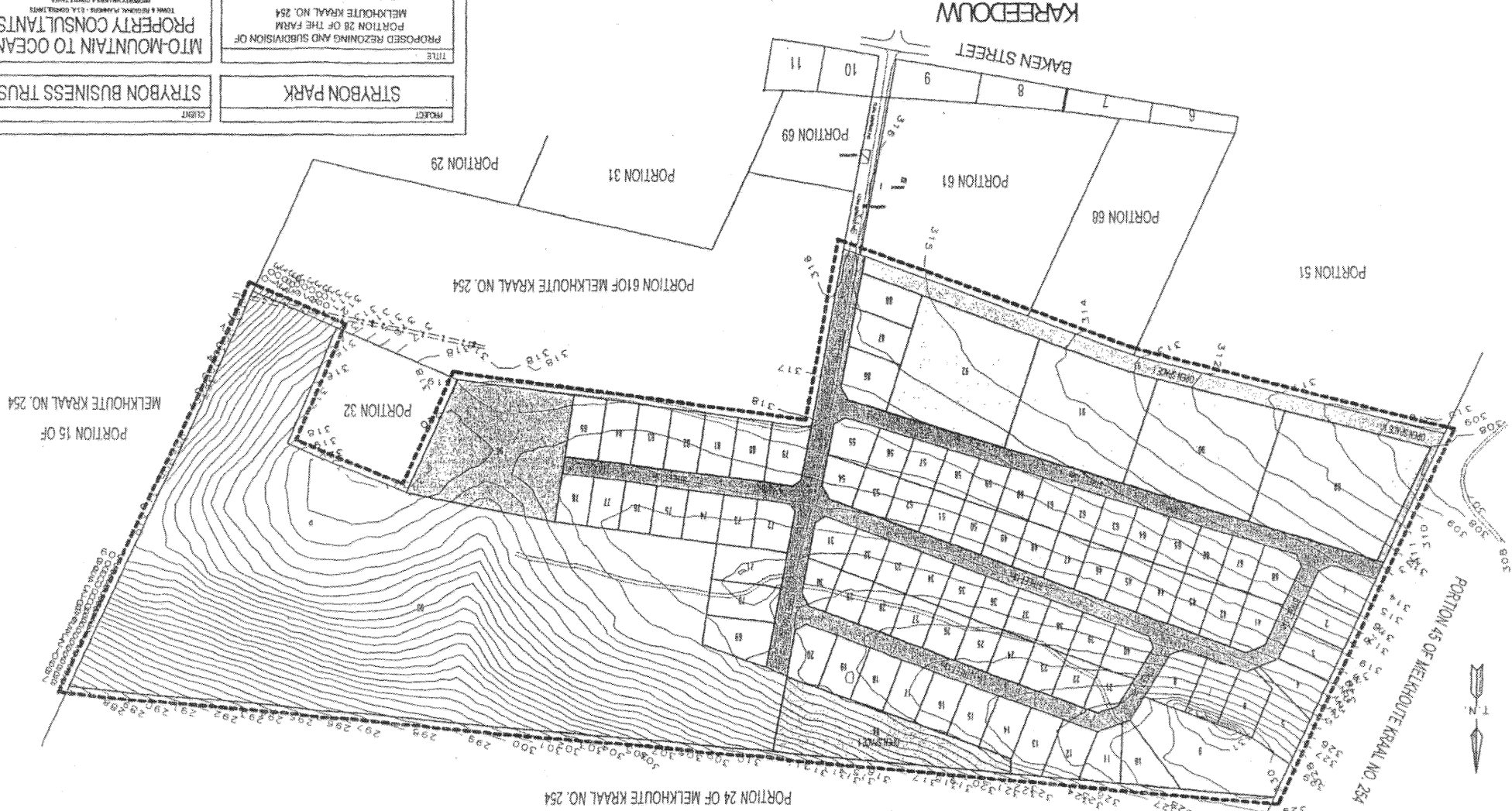
PROPOSED REZONING AND SUBDIVISION OF
PORTION 28 OF THE FARM
MELKHOUTE KRAAL NO. 254
KOUKAMMA MUNICIPALITY
ADMINISTRATIVE DISTRICT HUMANSDORP

124

CLIENT

P O BOX 44, JEFFERIS BAY, 4300
27 MAPLE CRESTWAY, JEFFERIS BAY, 4300
Eastern Cape South Africa
T 0834 94 12 12, Fax: 0834 94 12 13
E-mail: info@easterncape.gov.za

PLAN NO: H193WL1 | DATE: JAN.2006





GAMTKWA
KHOISAN FIRST NATION
(Association Incorporated Under Section 21)

REGISTRATION NO. 2005/035372/08

Postbus 106
Hankey
6200

Tel. : 042-287 0664
Sel. : 076 2016 283

10 JULIE 2006

Gertenbach Ecological Consultations
Postbus 963
Jeffreysbaai
6330

Geagte Dr. Gertenbach,

**OMGEWINGSIMPAKSTUDIE : GEDEELTE 28 VAN DIE PLAAS
MELKHOUTEKRAAL**

Ons verwys na ons vorige korrespondensie in bostaande verband.

Besoek is afgeleë by bostaande terrein, en ons het ook insae gehad in die verslag wat uitgereik is deur Dr. Binneman.

Ons is tevrede met sy bevinding, en aanbevelings, en het geen beswaar teen 'n aansoek om
vystelling vir 'n fase 1 Argeologiese Impakstudie nie.

Dankie vir die geleentheid om deel te neem aan die proses.


HOOFMAN M. WILLIAMS
GAMTKWA STAM