



COBUS DREYER

Pr. Archaeologist/Heritage Resource Specialist

**P.O. Box 12910
BRANDHOF 9324
Bloemfontein
dreyerj@telkomsa.net**

**Tel: 051-444 1187
Fax: 051-444 4395
Cell: 083 357 7982**

28 JUNE 2006

**FIRST PHASE ARCHAEOLOGICAL AND CULTURAL HERITAGE
ASSESSMENT OF THE PROPOSED RESIDENTIAL
DEVELOPMENTS AT THE FARM HARTNOLLS 458, KATHU,
NORTHERN CAPE**

EXECUTIVE SUMMARY

Residential developments are planned at the farm Hartnolls 458, Kathu, Northern Cape.

Archaeological material occurs in the form of Early Stone Age hand axes, which are found on bare rocky outcrops on the surface. The distribution of these artefacts seems to be fairly general and widespread and the impact on the cultural heritage remains of the proposed development sites at Hartnolls 458 will be of minor significance.

No other cultural or historical remains were found in the proposed area of development.

I recommend that the proposed developments and planning of the site may proceed.

INTRODUCTION AND DESCRIPTION

INVESTIGATION

The site for the proposed residential developments on the farm Hartnolls 458 near Kathu was visited on 1 June 2006. Dr Johan du Preez of MDA Environmental Consultants, Bloemfontein, took me to the site.

The area was examined for possible archaeological and historical material and to establish the potential impact on any cultural material that might be found. The Heritage Impact Assessment (HIA) is done in terms of the National Heritage Resources Act (NHRA), (25 of 1999) and under the Environmental Conservation Act, (73 of 1989).

LOCALITY

The proposed Erioloba Estate residential developments are planned on the farm Hartnolls 458 near Kathu, Northern Cape (Map 1).

The proposed area of developments is located a few kilometres from Kathu on the N14 road to Kuruman (Map 1) and adjacent to the existing town cemetery (Map 2).

Vegetation can be described as Thorn Veld, which consists mainly of Swarthaak (*Acacia mellifera*) and Driedoring (*Rhigozum trichotomum*) Fig.3&9).

The following GPS coordinates (Cape scale) were taken:

Stone tools 27°40'18"S. 023°04'51"E Altitude 1261m (Fig.1).

Δ KA-HU 16 27°40'15"S. 023°05'06"E Altitude 1234m (Figs.11-13).

Rd/border fence/power line 27°40'15"S. 023°05'19"E Altitude 1264m (Fig.8)

RESULTS

The land proposed for residential developments lies against the slope of the hill away from the N14 road (Figs.7-9).

Archaeological material in the form of Early Stone Age hand axes (Figs.1,4,6) occur on bare stony outcrops (Fig.5) on the surface and are visible in the roads (Figs.2&8) where there is no vegetation cover.

No indication of any other cultural or historical material was found in the proposed area.

IMPACT ASSESSMENT

It is anticipated that due to the wide and general distribution of the stone artefacts, the proposed residential developments at the farm Hartnolls 458 will

have a minor impact on the stone tools on the surface of the specific area of development.

RECOMMENDATIONS

There are no obvious reasons to delay the commencement of further planning and development of the site and I recommend that the planning of the proposed residential developments at the farm Hartnolls 458 near Kathu should proceed.

MITIGATION

Concerning the area for the proposed developments, no mitigation measures will be required.

ACKNOWLEDGEMENTS

I thank Dr Johan du Preez of MDA Environmental Consultants, Bloemfontein, for taking me to the site.

SELECT BIBLIOGRAPHY:

BEAUMONT, P.B. & VOGEL, J.C. 1989. Patterns in the age and context of rock art in the Northern Cape. *South African Archaeological Bulletin* 44(150):73-81.

BEAUMONT, P.B., SMITH, A.B. & VOGEL, J.C. 1995. Before the Einiqua: the archaeology of the frontier zone. In Smith, A.B. (Ed.). *Einiqualand: Studies of the Orange River Frontier*. Cape Town: University of Cape Town Press.

DEACON, J. 1992. *Archaeology for Planners, Developers and Local Authorities*. Cape Town: National Monuments Council.

HUMPHREYS, A.J.B. 1986. *Searching for the past*. Cape Town: David Philip.

MORRIS, D. 1988. Engraved in place and time: a review of variability in the rock art of the Northern Cape and Karoo. *South African Archaeological Bulletin* 43(148):109-121.

MORRIS, D. 1990a. 'Etchings' and 'Intaglios' in the Upper Karoo: Part 1: The engravings at Springbok Oog. In Beaumont, P.B. & Morris, D. *Guide to archaeological sites in the Northern Cape*. Kimberley: McGregor Museum.

MORRIS, D. 1990b. 'Etchings' and 'Intaglios' in the Upper Karoo: Part 2: Engravings on Jagtpan and adjacent farms. In Beaumont, P.B. & Morris, D. *Guide to archaeological sites in the Northern Cape*. Kimberley: McGregor Museum.

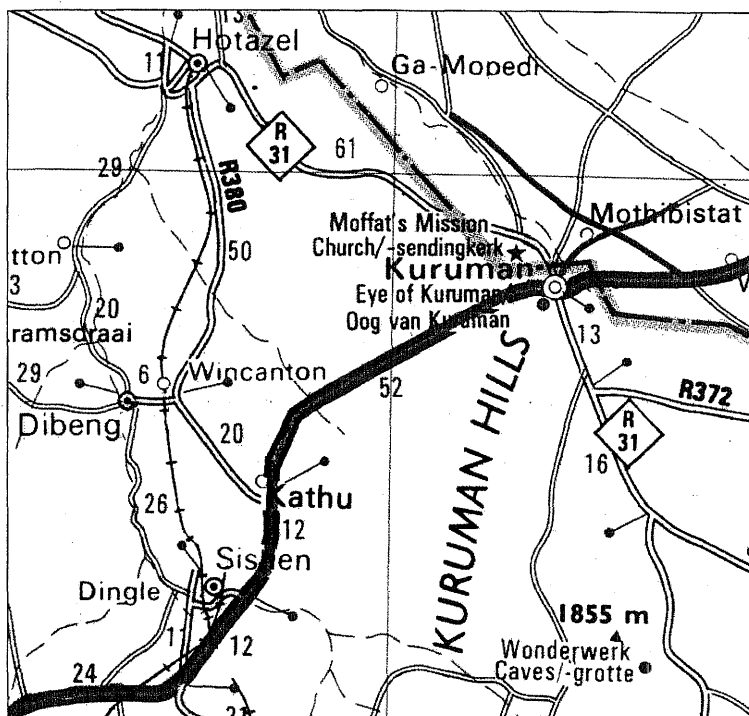
PISTORIUS, J.C.C. 1994. *Eskom Archaeological Site Identification Guide*. Johannesburg: Eskom.

ROSENTHAL, E. n.d. *River of Diamonds*. Cape Town: Howard Timmins.

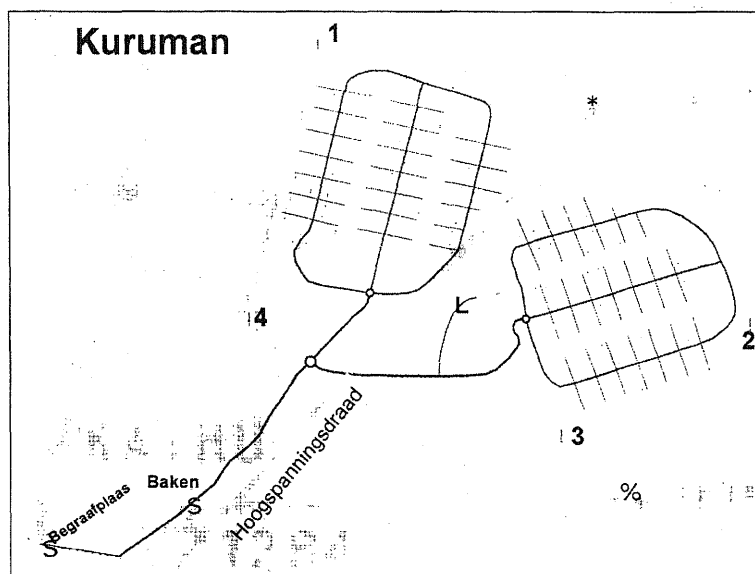
SMITH, A.B. (Ed.). 1995. *Einiqualand: Studies of the Orange River Frontier*. Cape Town: UCT Press.

SOHNGE, P.G. VISSER, D.J.L. AND VAN RIET LOWE, C. 1937. *The geology and archaeology of the Vaal River Basin*. Pretoria: Government Printer.

LIST OF ILLUSTRATIONS



Map 1 Locality of Kathu in relation to Kuruman, Hotazel and Sishen.



Map 2 Schematic layout of the proposed developments at Hartsnoll 458, Kathu.

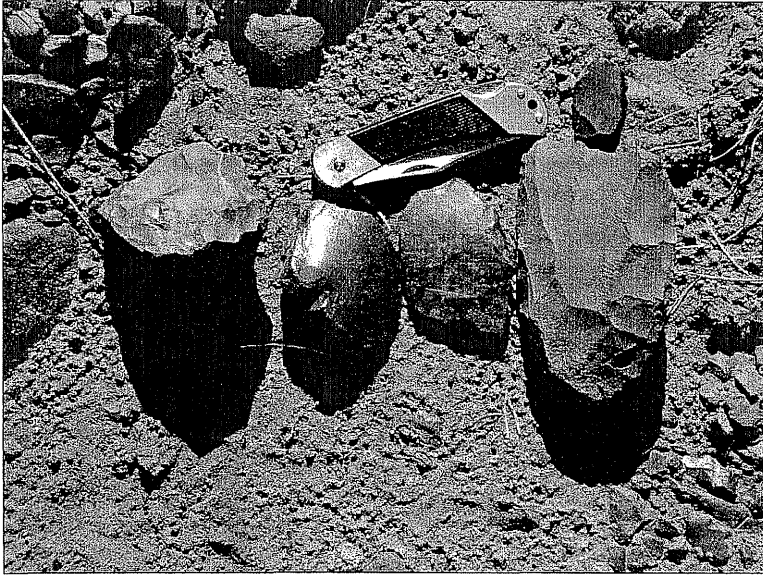


Fig.1 A small collection of stone tools from the site at Hartsnoll 458, Kathu.
Pocket knife=100mm.



Fig.2 The farm road where some of the artefacts were discovered.

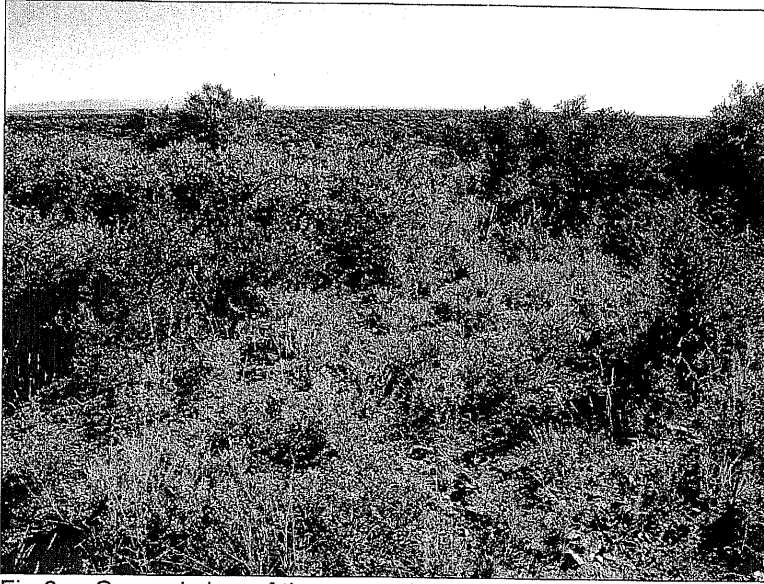


Fig.3 General view of the vegetation in the area.



Fig.4 Hand axes found near the road. Pocket knife=100mm.



Fig.5 Stone tools occur on stony outcrops.

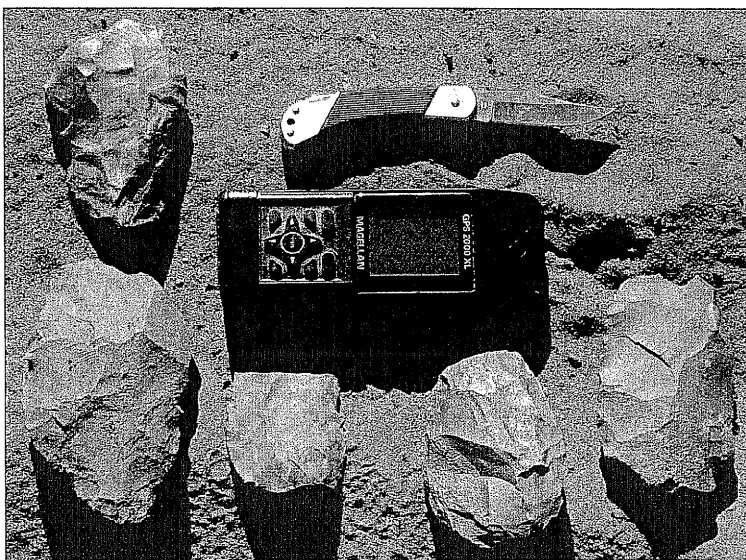


Fig.6 Stone tools from Hartsnoll 458 displayed with modern day technological instruments.

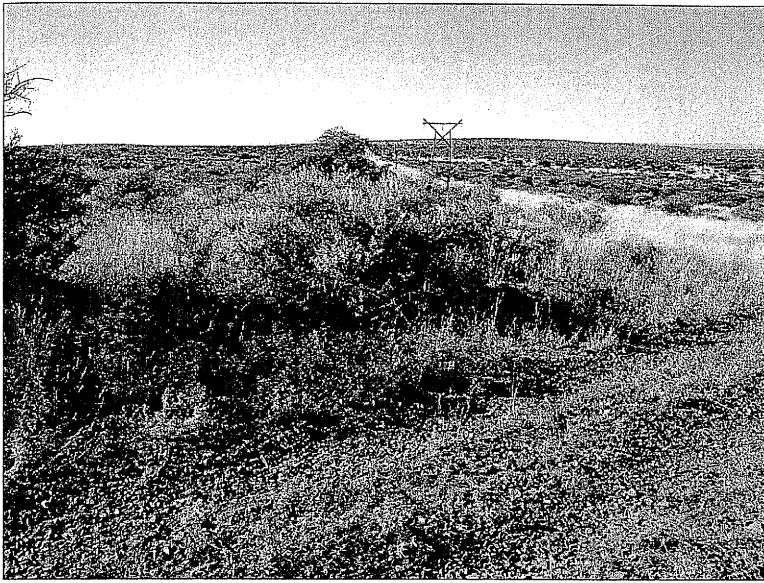


Fig.7 View of the site proposed for development at Hartsnoll 458.



Fig.8 Point where the power line crosses the Hartsnoll 458 border fence. Note the stony cover on the surface.

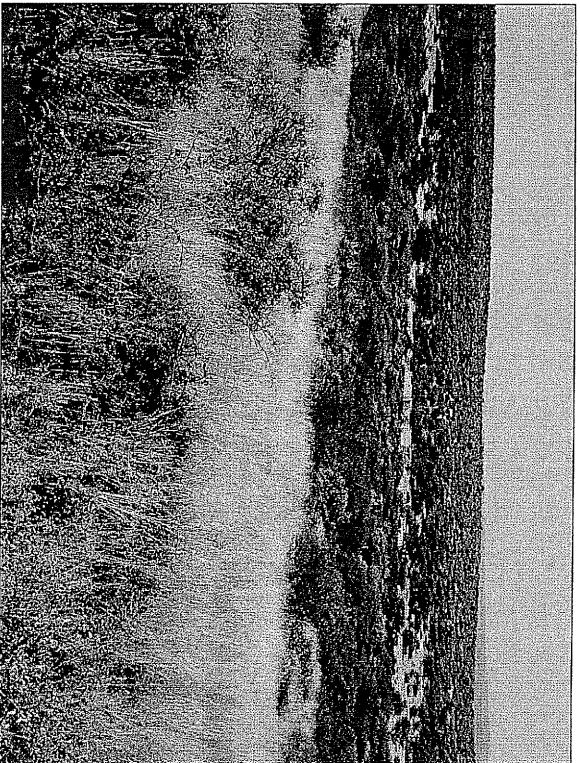


Fig. 9 View of the proposed area of development.



Fig. 10 Example of stones on bare patches and in the road.

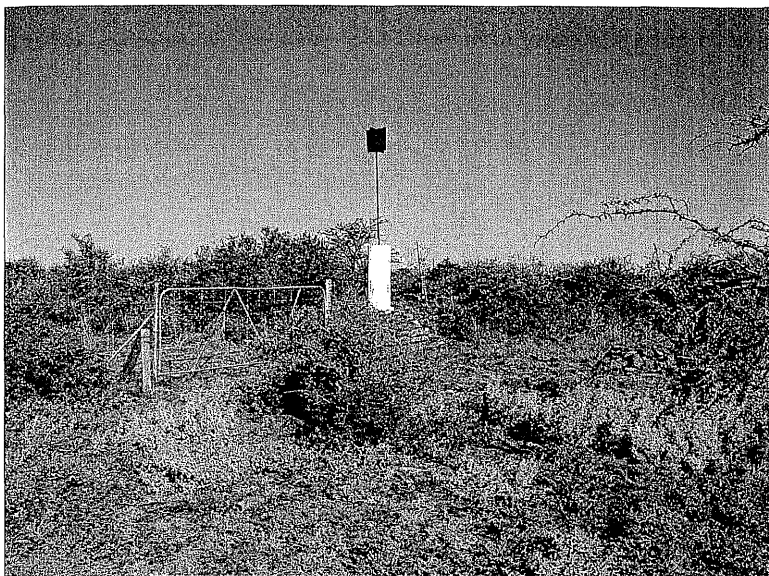


Fig.11 Trig-beacon KA-HU 16 at border of farm.

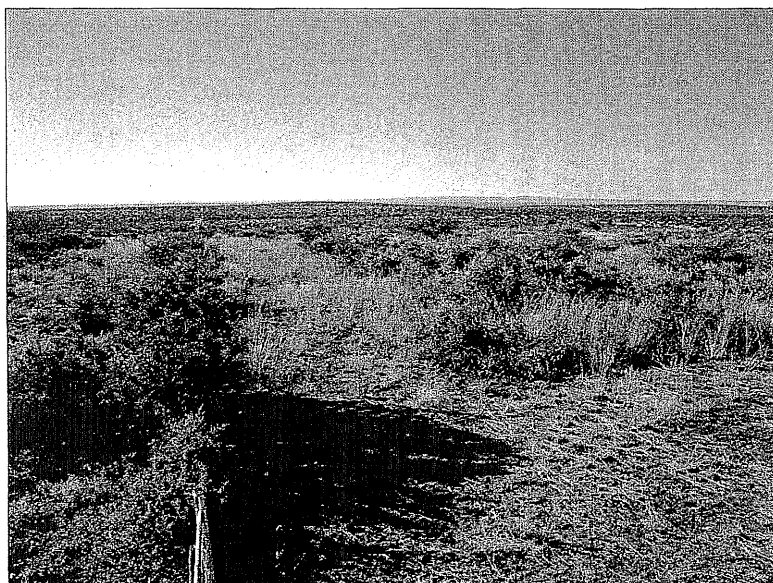


Fig.12 View from beacon facing north east.

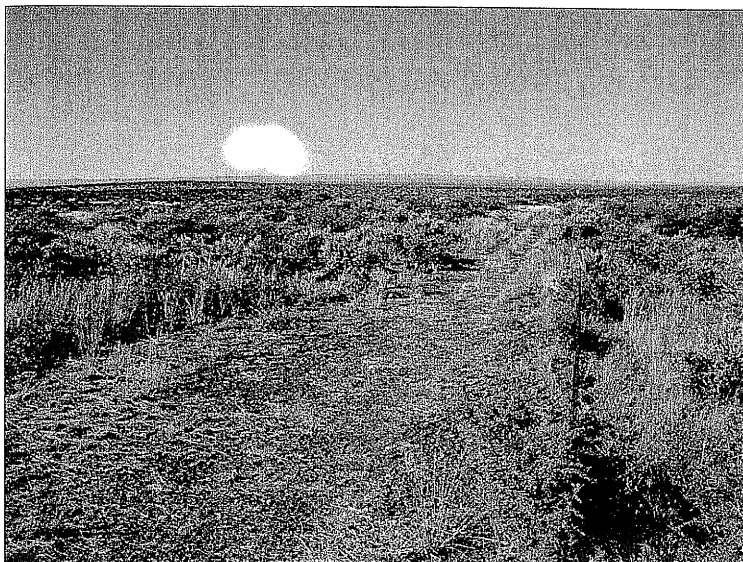


Fig.13 View from beacon facing east.

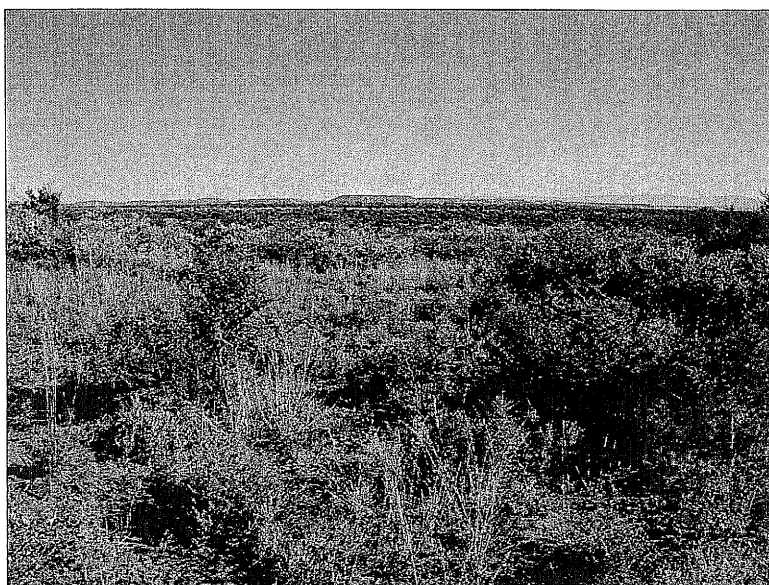


Fig.14 View from the farm Hartsnoll 458 facing towards Kathu.