

# **AN ASSESSMENT OF IMPACTS ON HERITAGE SITES AT THE DARLING DEMONSTRATION WIND FARM**

Prepared for

**The Environmental Evaluation Unit  
UCT**

September 2001



Prepared by

**Archaeology Contracts Office**

Department of Archaeology  
University of Cape Town  
Private Bag  
Rondebosch  
7701

Phone (021) 650 2357

Fax (021) 650 2352

Email [DJH@beattie.uct.ac.za](mailto:DJH@beattie.uct.ac.za)

## **1. EXECUTIVE SUMMARY**

No heritage sites are located on the property in question. As a result, no further mitigatory action is suggested.

## **2. STUDY METHODOLOGY**

The study was intended to identify and assess significance of heritage material existing on the site. During the initial site visit it was noticed that there were several granite outcrops in the affected area that had not been subjected to ploughing and they were immediately identified as potential locations for the undisturbed remains of earlier human activity. Scatters of surface artefacts in ploughed areas can (despite the disturbance) also still reveal what types of sites were once present and where they were located in the local landscape.

During a follow up visit to site, the granite outcrops and large portion of the ploughed areas was searched on foot. Despite surface visibility being reduced due to heavy plant cover in most areas, it is not believed to have been a major limitation in the assessment.

## **3. DESCRIPTION OF THE AFFECTED ENVIRONMENT**

The location and details of the topography are shown in Figure 1. The entire site (with minor exclusions around outcrops) has been subjected to intense ploughing and agriculture. The highest part of the site (Moedmaag hill) contains numerous small granite outcroppings at the crest giving way to soil covered slopes rising up to a smaller hill in the direction of the coast to the west. Scattered granite outcrops are also present on the smaller hill. A prominent erosion gully is present in the upper part leading water from agricultural land down to an earth dam in the saddle between the two hills. The depth of bedrock can be gauged by inspecting the gully. Cobble-sized fragments of granite and sandstone have been turned up by ploughing only on the uppermost western slopes of Moedmaag hill where bedrock is closest to the surface. A sub station and a visitors center will be located in the vicinity of the R27-Darling-Ysterfontein intersection.

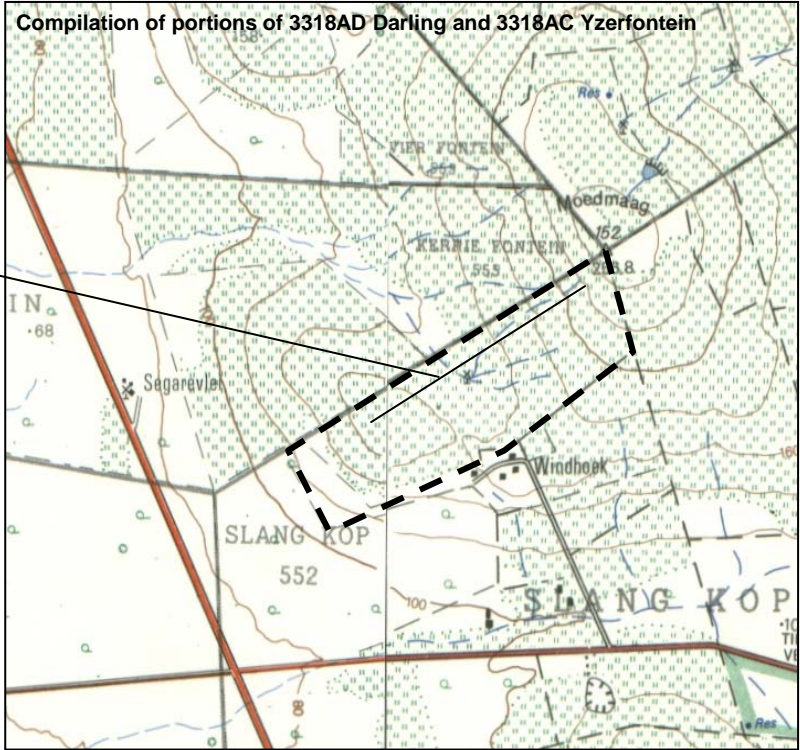
## **4. IMPACT IDENTIFICATION AND ASSESSMENT**

A foot search of the area failed to produce traces of heritage material of any sort. Given this absence, there is no possibility of impacts occurring from this development. While the precise locations of the visitors center and sub-station have not yet been finalised, it is not believed that any impact will result in that area from these activities.

## **5. SUMMARY OF KEY FINDINGS AND RECOMMENDATIONS**

No heritage material has been found and no further intervention in this regard is required.

**Fieldwork and report preparation by Dave Halkett.**



most likely  
position for  
turbines is in  
the northern  
half of the site  
parallel to the  
boundary

