

Archaeological Impact Assessment

Title: Chatsworth Low Cost Housing Development.

Proposal to develop on 14.8265 ha of land that is Erf no 2-132, Northern Extension Section of the town of Chatsworth, Swartland 'B' Municipality, West Coast District Municipality, Western Cape. The zoning of the property is single residential. It is proposed to accommodate 434 housing erven, one church, one crèche and one business erven and 12 park or open space erven on the property. The development is an extension to the town.

Author of this report:

Prof H.J. Deacon PhD, Consulting Archaeologist
49 Van Riebeeck Street, Stellenbosch 7600. Tel/Fax 021 887 1540, Cell 082 682 7300
Email: hjdeacon@iafrica.co.za

Commissioned by

Cape Lowlands Environmental Services cc
Mr Nicolaas Hanekom, PO Box 70, Darling 7345
Tel: 022 492 3435, Fax: 022 492 3435, Cell: 076 851 0476.
Email: nhanekom@cles.co.za

Developer

Swartland Municipality / Swartland 'B' Municipality.
Mr J Scholtz / Mr A Zaayman, Private Bag X52, Malmesbury 7299.
Tel: 022 487 9400, Fax 022 487 9440.
Email: SwartlandMun@swartland.org.za

Date: 15 June 07



**Figure 1. Location of Northern Extension Section, Chatsworth
1:50 000 sheet 3318 DA Philadelphia**

Executive Summary

A survey of the archaeological resources on the Northern Extension Section of Chatsworth town was carried out. The area is underlain by sands and infested with alien vegetation. Exposures along the network of cleared roads and service lines revealed no archaeological artefacts or other heritage resources. There are no structures on the property. It is concluded that the possibility of the housing development impacting on heritage resources is very low.

Background Information

Chatsworth is a small town east of and close to Atlantis and Mamre (Figure 1). The northern section of the town has been laid out with roads and services and awaits the construction of housing (Figure 2 & 3).

This report is part of a Basic Assessment and a full EIA is not required.

Archaeological Background

The nearest major archaeological sites that have been excavated in the sandy substrates are in the area of Duinefontein (Klein *et al.* 1999 - Duinefontein 2, an Acheulian site in the Western Cape Province of South Africa - *Journal of Human Evolution* 37: 153-190) close to coast and some 15 km distant. These show that at depth below the sand cover Pleistocene artefacts and fauna can be preserved. Further inland the sands are less calcareous and conditions for the preservation of fauna are less optimal. There remains a possibility that deep excavations, probably deeper than any proposed in this development, could intersect artefact and or fossil bearing horizons in the area of Chatsworth.

Description of the property

The property has been mechanically cleared of alien (dominantly *Acacia saligna*) vegetation recently with considerable surface disturbance shown on the satellite image (Figure 3). Re-growth of aliens and indigenous vegetation from the seed store in the sands has taken place since (Figure 4). To the south is housing and the surrounds on the other sides are Agriculture 1 developments.

Methodology

Although trenches for services along the roads have been back filled they offered the possibility of revealing materials brought up from the subsurface and these were systematically examined (Figure 4). The log of the survey with GPS readings is shown in Figure 5.

Observations and Results

The surface of the property has been extensively disturbed. The cover of sands is deep and the service trenches had brought no other materials like ferricrete to the surface. No archaeological or palaeontological materials were observed.

Sources of Risk and Statement of Significance

The absence of any surface finds suggests the cover sands are sterile. Below this surficial cover at greater depth there is a possibility that cultural horizons could be intersected. The risk is considered low because the service trenches have revealed nothing significant and the type of development does not involve large earthmoving.

The significance is considered to be low.

Recommended Mitigations

It is recommended that should any excavations by chance uncover buried palaeontological or archaeological materials including human remains that Heritage Western Cape is notified (Mr N Ndlovu, Senior Heritage Officer – Archaeologist, Private Bag X9067, Cape Town 8000, Tel: 021 483 9687, Fax: 021 483 9842, ndlovu@pgwc.gov.za). Features like burials for example can occur in unpredictable locations.

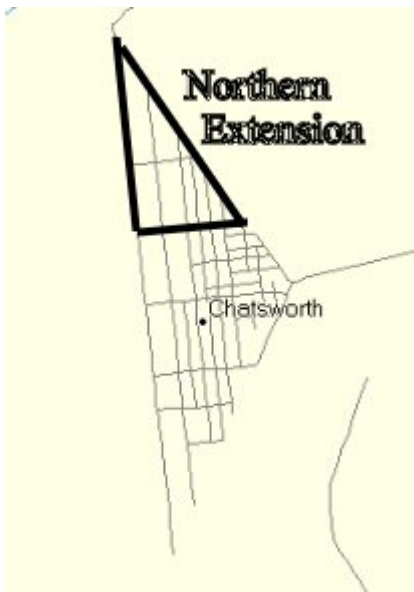


Figure 2. Boundaries of the Northern Extension, Chatsworth town

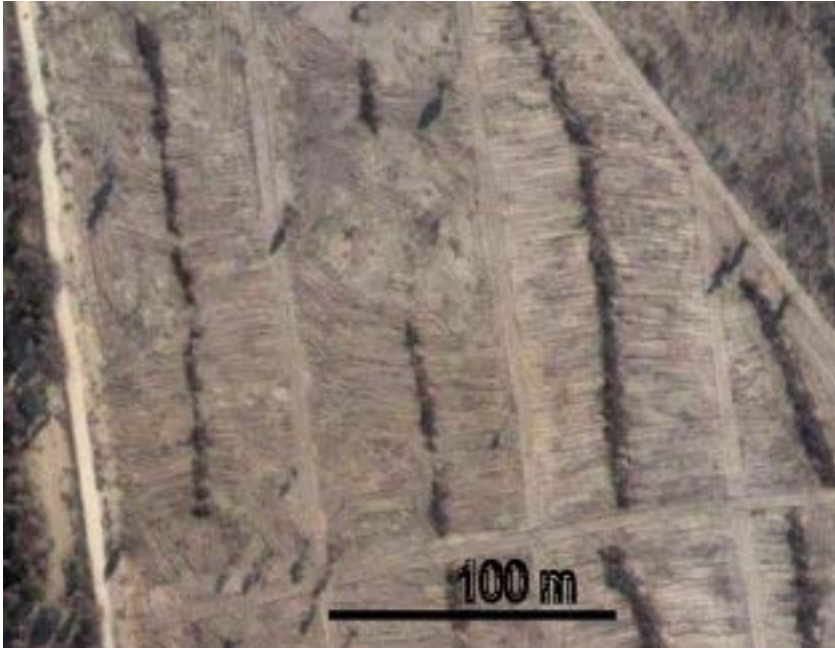


Figure 3. Aerial view of surface disturbance in clearing aliens and putting in services.



Figure 4. Cleared track with blue pole marking line of services, alien regeneration since clearing on the margins and the town in the distance.

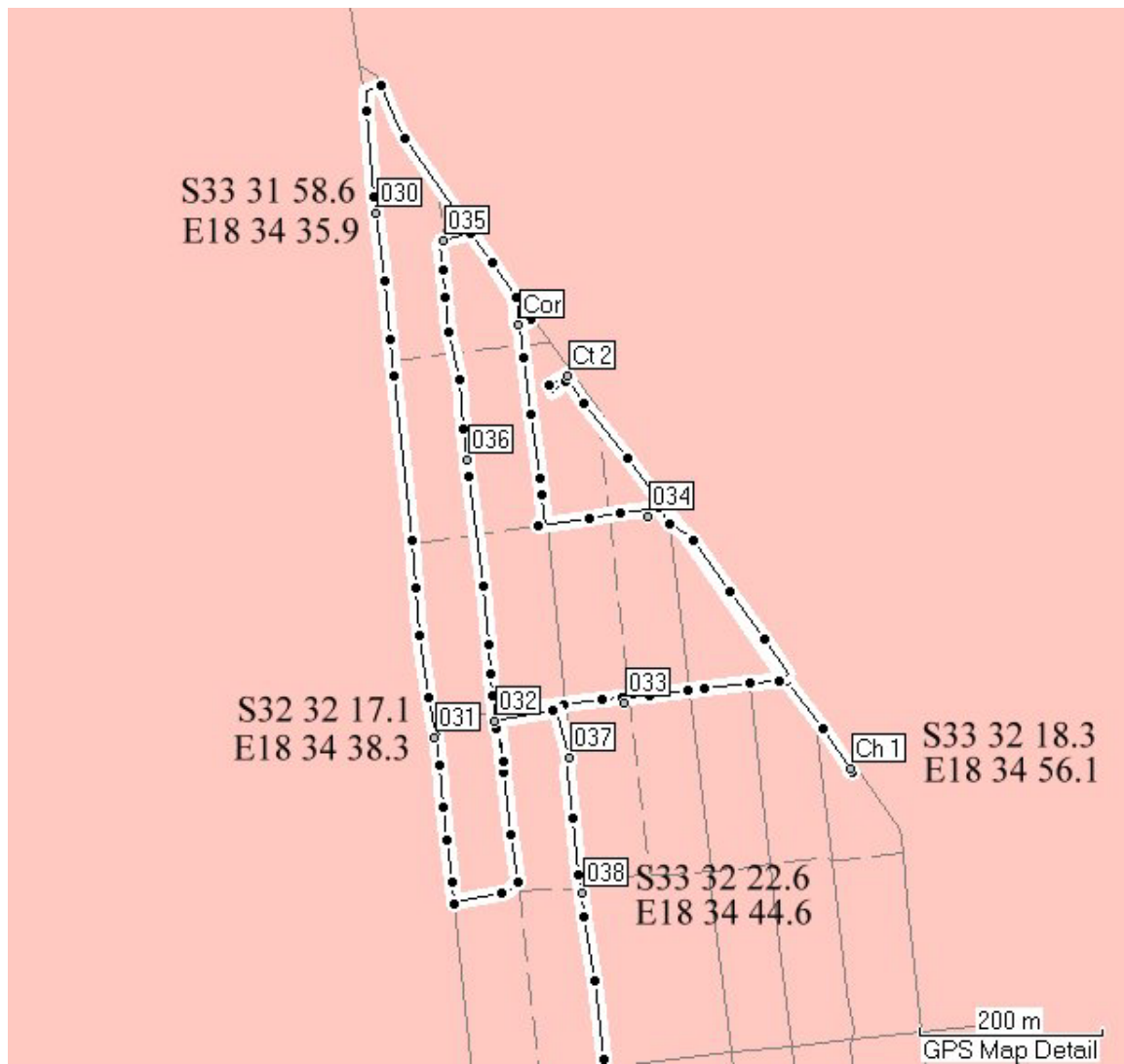


Figure 5. GPS log and co-ordinates of the Northern Extension, Chatsworth