

Agency for Cultural Resource Management

Specialists in Archaeological Studies and Heritage Resource Management

PO Box 159 Riebeeck West 7306 Phone/Fax 022-461 2755
E-mail: acrm@wcaccess.co.za Cellular: 082 321 0172

13 April, 2007

Att : Ms Diana Mouton
Hilland Associates
Environmental Management Consultants
PO Box 590
George
6530

Dear Ms Mouton

ARCHAEOLOGICAL INVESTIGATION THE PROPOSED DEVELOPMENT OF THE NORTH WESTERN BULK WATER RESERVOIRS AT DENNEOORD AND BULK WATER SUPPLY LINE FROM DENNEOORD TO PACALTSDORP, GEORGE

1. Introduction and brief

Hilland Associates on behalf of the George Municipality requested that the Agency for Cultural Resource Management conduct an archaeological investigation of the proposed development of the North-Western bulk water reservoirs at Denneoord and bulk water supply line from Denneoord to Pacaltsdorp, in George in the Western Cape Province (Figure 1).

The intention and purpose of the reservoir is to increase the municipal storage capacity for the potable water demand of George. The proposed pipeline is required to supply potable water to Pacaltsdorp extensions as part of the Municipal Master Plan for Water Supply.

The site where the new reservoirs are proposed is vacant. The proposed bulk water supply pipeline will be aligned via the back of the Denneoord residential area, the Botanical Gardens, in close proximity and crossing sections of the Rooi River, between the George Sports Club and Die Bult educational centre, via King George Park residential area, Rooirivier residential area (Platner Drive), past the GAME Centre, along York Street, underneath the N2 and into Beach Road, Pacaltsdorp (Figures 3-14).

The proposed pipeline will be buried approximately 800 mm to 1.0 meter deep below natural ground level. In places where the pipeline has to cross the Rooi River and/or natural drainage lines, the pipeline will be 'pulled' underneath the water canal.

The length of the pipeline is nearly 10.5 km.

The extent of the proposed development (a linear development exceeding more than 300 m in length) falls within the requirements for an archaeological impact assessment as required by Section 38 of the South African Heritage Resources Act (No. 25 of 1999).

The aim of the study is to locate and map archaeological heritage sites and remains that may be negatively impacted by the planning, construction and implementation of the proposed project, to assess the significance of the potential impacts and to propose measures to mitigate against the impacts.

2. Terms of reference

The Terms of Reference for the archaeological investigation are to:

- Identify and map heritage resources at the proposed water reservoir and in the proposed pipeline route;
- Determine the importance of heritage resources at the proposed reservoir and in the proposed pipeline route;
- Determine and assess the potential impacts of the proposed project on the heritage resources, and
- Recommend mitigation measures to minimise impacts associated with the proposed project.

3. The site

The route for the proposed bulk water supply pipeline is illustrated in Figure 1.

4. Approach to the study

The proposed route was subjected to a vehicle and foot survey.

The proposed reservoir site was also searched for archaeological heritage remains

The site visit and assessment took place on 2nd April, 2007.

5. Results of the study

No pre-colonial archaeological heritage remains were located during the study.

It should be noted that no pre-colonial archaeological heritage remains were located during an assessment of the proposed upgrading of the bulk water main for George that entails the construction of a water pipeline that will run from the George Water Treatment Works to the proposed above reservoirs¹.

¹ Kaplan, 2007. NID checklist. Proposed upgrade bulk water main for George. Prepared for Sharples Environmental Services cc.

6. Impact statement

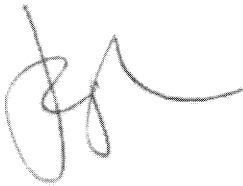
The impact of the proposed project on pre-colonial archaeological heritage remains is likely to be very low.

The probability of locating significant archaeological heritage remains during implementation of the project is also likely to be improbable.

7. Conclusion

The archaeological investigation has shown that development of the North-Western bulk water reservoirs at Denneoord and bulk water supply line from Denneoord to Pacalstdorp, George, should be allowed to proceed as planned.

Yours sincerely

A handwritten signature in black ink, appearing to be 'JK' followed by a long horizontal stroke.

Jonathan Kaplan

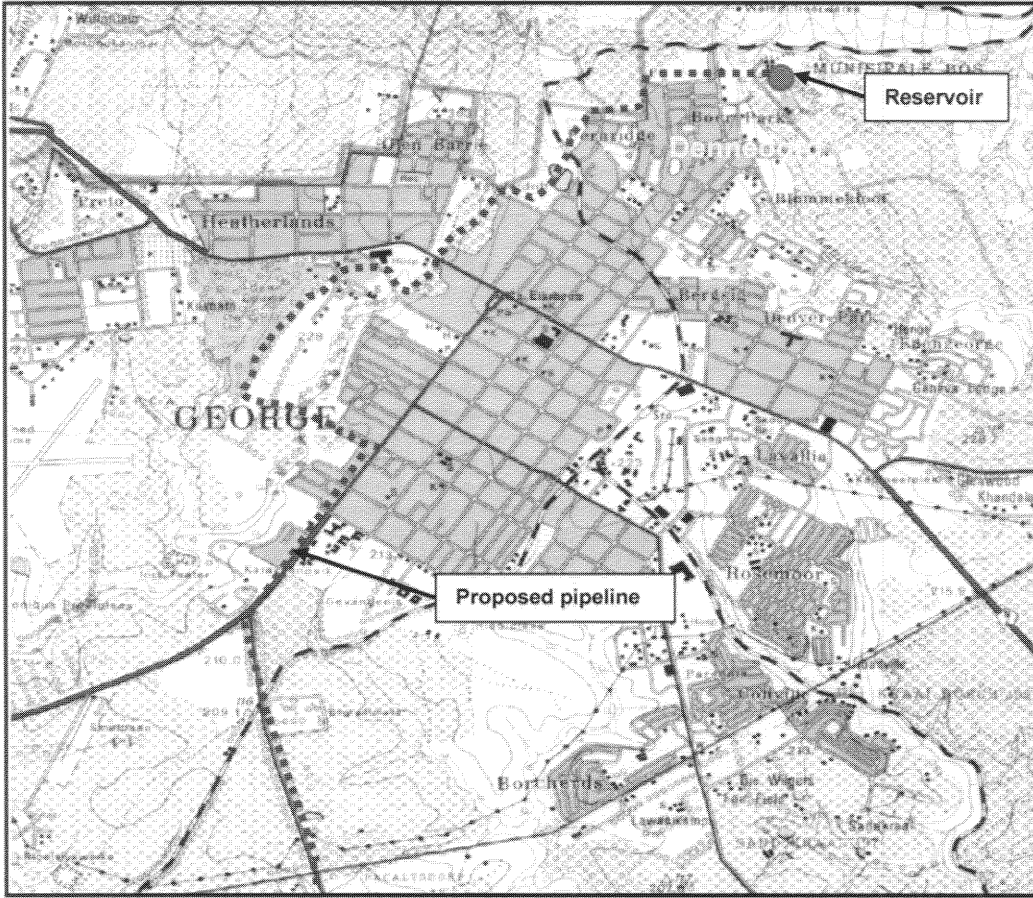


Figure. Locality map (3322 CD George)



Figure 2. Aerial photograph illustrating the proposed pipeline route

2
0



Figure 3. Beach Road, Pacaltsdorp



Figure 6. York Street, George



Figure 4. Beach Road, Pacaltsdorp



Figure 7. York Street, George

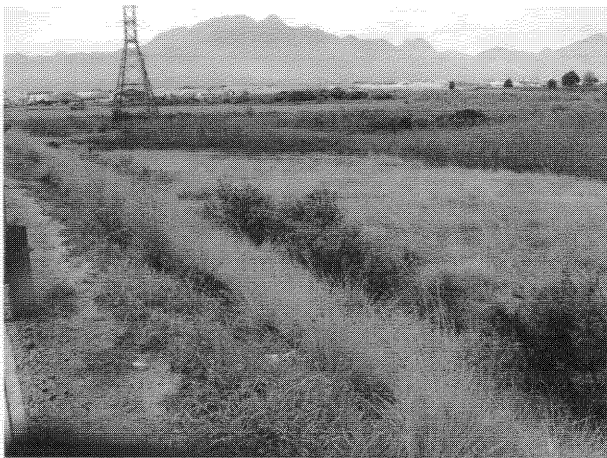


Figure 5. York Street, George

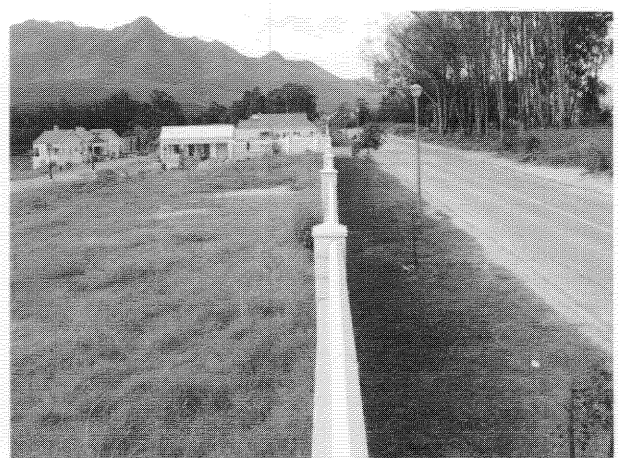


Figure 8. Platner Drive, George



Figure 9. Platner Drive, George



Figure 12. Botanical Gardens, George



Figure 10. Rooirivier, George



Figure 12. Denneoord, George

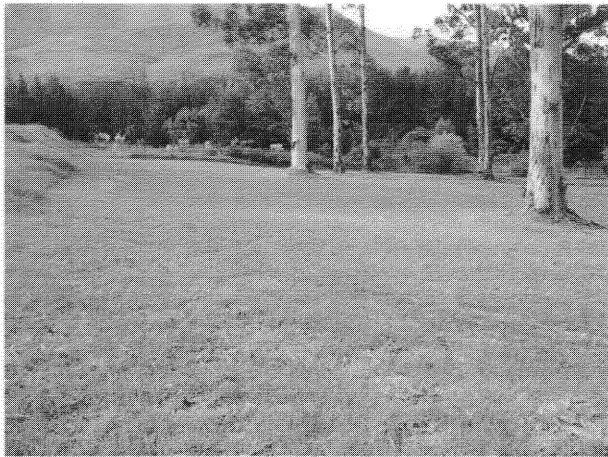


Figure 11. Back of the Botanical Gardens, George



Figure 13. Arrow indicates reservoir site