

g/2/0001

**PHASE 1 HERITAGE IMPACT ASSESSMENT REPORT ON A
PORTION OF THE FARM KABIS 27 NEAR GOODHOUSE, NAMAQUA
DISTRICT MUNICIPALITY, NORTHERN CAPE PROVINCE.**

Peter B Beaumont

c/o Archaeology Department
McGregor Museum
PO Box 316
8300 Kimberley
Tel 053 - 842 0986 or 053 - 839 2700
Fax 053 - 842 1433
e-mail se@museumsnc.co.za

CONSULTANT

Ms Marquerite Geldenhuis

MEG Environmental Impact Studies

Tweedelaan 13
Oosterville
8801 Upington
Tel 054 - 332 2781
Fax 054 - 332 2781
e-mail megeois@intekom.co.za

4 January 2007

EXECUTIVE SUMMARY

The purpose of this study was to establish if any heritage sites were present within a portion of the farm Kabis 27 near Goodhouse, Namaqua District Municipality, Northern Cape. The 300 ha area that was examined consisted of a gradual (ca. 10°) slope of coarse sand and rubble supporting a sparse vegetation cover except at its lower limit, next to the Orange River. No stone artefacts or fossil bones were seen but three graves marked by low uninscribed slab headstones were found not far from a now - abandoned house of stone slabs. The burials, of uncertain age, will need to be preserved, but the rest of the ground is not deemed to have any significant heritage potential.

BACKGROUND INFORMATION

The study is part of an EIA being prepared by Marqurite Geldenhuis for clients who are in the process of hiring this State ground which will then be used to produce grapes, watermelon, spanspek and *Hoodia* plants.

LOCAL ARCHAEOLOGY

D Morris located a quartzite – based Victoria West occurrence at Garnsberg, about 40 km to the SSE, but, to my knowledge, no other archaeological sites have as yet been found in the broad vicinity of Kabis.

PROPERTY DESCRIPTION

The examined 300 ha area forms the northern side of the farm Kabis 27, in the Namaqua District Municipality, about 100 km NNE of Springbok. It comprises a gentle slope, between flanking hills, down to the Orange River, at roughly 28° 54' S, 18° 30' E, as shown on the appended 1:50 000 map 2818 CD and 2919 DC (Figs 1 & 2). Over 1.5 hours were spent walking over its full extent in temperatures of ~40°C on Wednesday 13 December 2006.

SUPERFICIAL GEOLOGY

Bedrock in this vicinity is steeply – dipped Precambrian schist, largely covered on the inspected slope by coarse beige sand and rock rubble. Sediment depth increases markedly downslope, where drainage gullies are up to 2 m deep, but without any bedrock exposures at their base.

HERITAGE FINDINGS

My 1.5 hour – long search of the valley slope produced no stone artefacts or fossil bones, either on the surface or in gully sections. I did, however, see the remains of an ample homestead of local stone, with clay as a daga, at 28° 53' 49.7" S, 18° 29' 52.4" E (Fig. 3). Surrounding debris was sparse, with a broken shock – absorber

amongst the least weathered items, which may indicate abandonment since the mid – 20th century. A few hundred metres away to the south – east, near the edge of a drainage channel, I found two adult graves, stone covered and with rough uninscribed headstones, at 28° 53' 54.4" S, 18° 29' 58.3" E (Fig. 4). Between these was a very small headstone, but with no stone covering, that may, represent the grave of an infant.

CONCLUSIONS

The graves will have to be fenced with 1.5 m high wire mesh set in a rectangle at least 2m away from the interments, with entry by way of a padlocked gate. As for the rest of the inspected area, this produced no significant cultural material and its use for agricultural purposes will therefore have no impact on the heritage resources of the Northern Cape.

NOTES

- A copy of the locality maps and all appended Figures must accompany this report to SAHRA.
- Applications to SAHRA will not be processed unless accompanied by payment of R150 per application. SAHRA banking details are: ABSA, Branch Code: 312109; Current Account no.: 360 680 606.

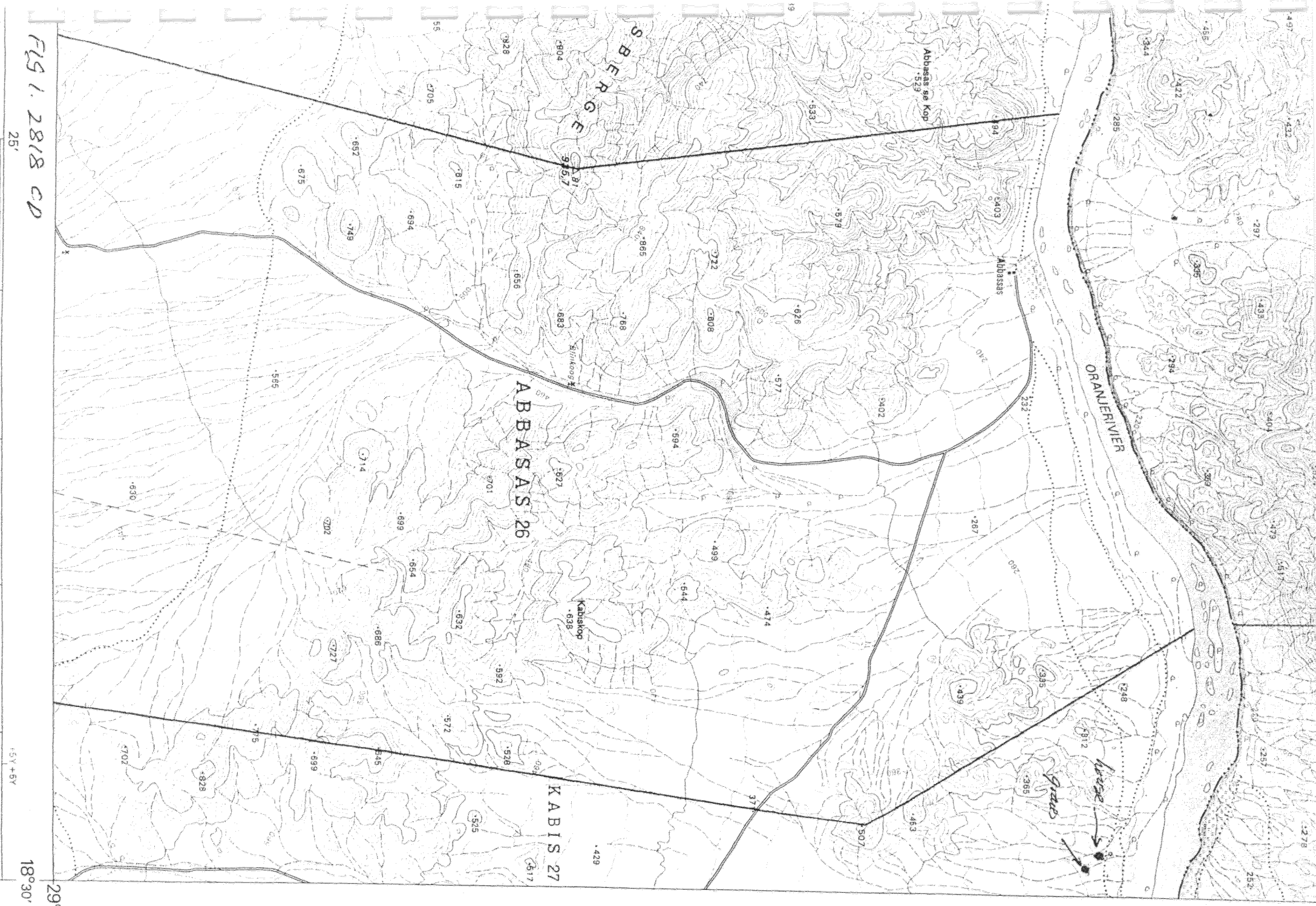


FIG 1. 2818 CD

25'

5V+5V

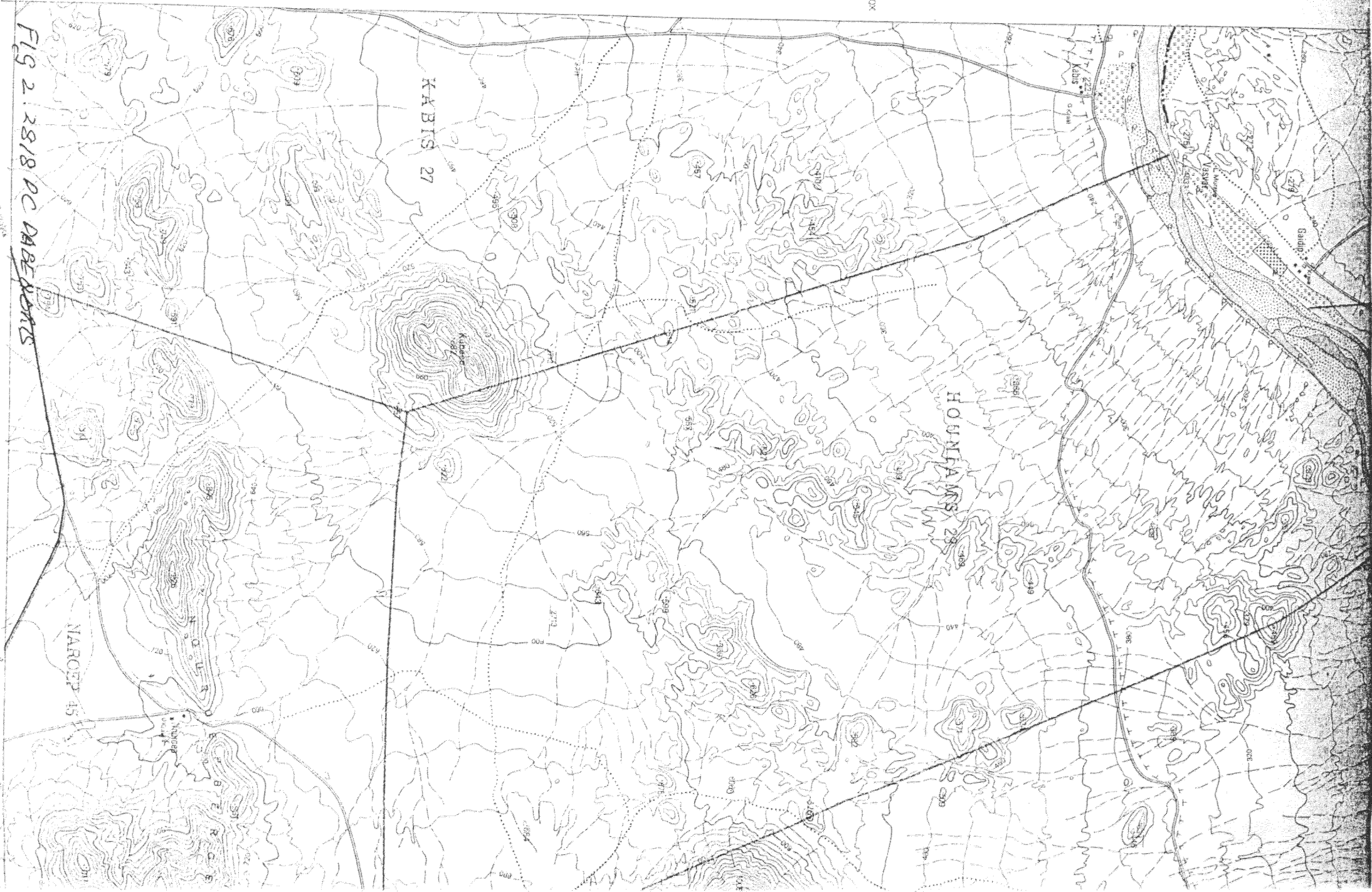
18°30'
29°00'

2900'

+17X

55'
+320X

FIG 2 28/18 DC DABE REPORTS



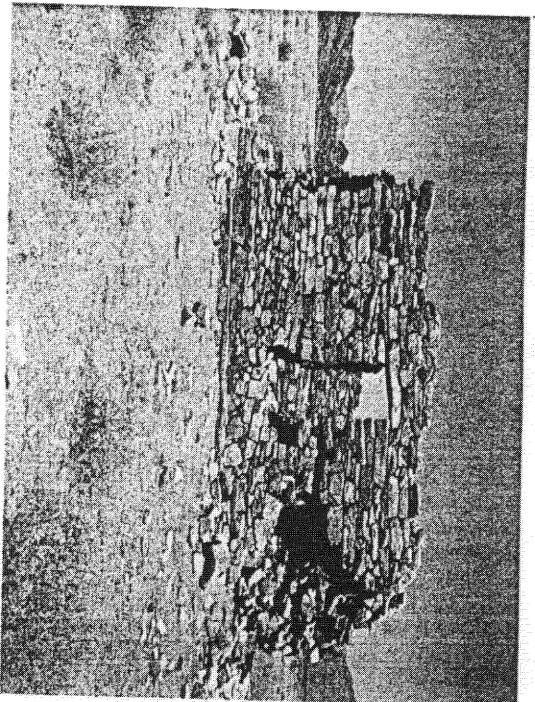


FIG 3.
FARHOUSE
RDINS

GULLY WALL EDGE →

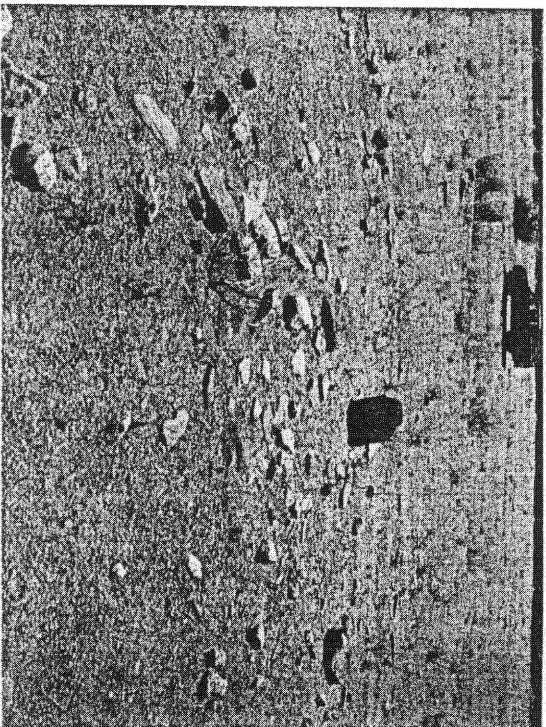


FIG 4
ONE OF THE
ADULT GRAVES