

**PHASE 1 HERITAGE IMPACT ASSESSMENT REPORT ON A
PORTION OF THE FARM HOPKINS 486, NORTH OF
OLIFANTSHOEK, SIYANDA DISTRICT MUNICIPALITY, NORTHERN
CAPE PROVINCE.**

Peter B Beaumont

c/o Archaeology Department

McGregor Museum

PO Box 316

8300 Kimberley

Tel 053 - 842 0986 or 053 - 839 2700

Fax 053 - 842 1433

e-mail se@museumsmc.co.za

Consultant:

Geo-Rock International (Pty) Ltd.

PO Box 3226

8300 Kimberley

Tel 053 – 831 7634

Fax 053 – 832 5421

e-mail georock@kimberley.co.za

4 April 2007

EXECUTIVE SUMMARY

The purpose of this study was to establish if any heritage sites were present in or near two stream bed stretches on the farm Hopkins 486, north of Olifantshoek in the Siyanda District Municipality of the Northern Cape. A 4 hour – long foot search by two on the way to and along these produced 7 – 8 stone artefacts, but no actual sites, palaeontological bones or graves of any age. It is consequently considered that these two strips of ground have no archaeological significance and that the proposed removal of river sand from them will have no impact on the heritage resources of the Northern Cape.

PROJECT BACKGROUND

The anticipated threefold increase in the size of Kathu over the next decade will require vast amounts of river sand and crushed stone, in addition to bricks. To meet that looming demand, Dawid Malan of Langeberg Bricks, some 30 km from Kathu, plans to recover river sand on the farm Hopkins 486, near Olifantshoek. This report is part of an EIA that is to be compiled by Geo-Rock International on his behalf, and with the agreement of the farm owner.

LOCAL ARCHAEOLOGY

No sites are known on the farm Hopkins 486, but nearby, in the Langeberge to the SW, is the conflict settlement Lucas Janjie se Stat, 30 km due E is Kathu Pan 1 – 11 and Kathu Townlands (Beaumont & Morris 1990), and 30 km due W are LSA and Fauresmith occurrences with engravings at Nchwaneng.

PROPERTY DESCRIPTION

The two stream bed stretches that were investigated both lie on the farm Hopkins 486, about 20 km north of Olifantshoek, in the Siyanda District Municipality of the Northern Cape (Figs 1 & 2). The one enters the farm from the south and the other drains from Hopkins se Kloof, with both linking on the eastern edge of this property to form the Ga – Mmatshophe, a tributary of the Kuruman River (Fig. 1). Over 4 hours was spent walking with Wiehahn Smit along the stretches shown in Fig. 1 on the afternoon of Thursday 29 March 2007.

SUPERFICIAL GEOLOGY

Weathering over time of the quartzites that form the Langeberge results, eventually, in the dissolution of exposed rock surfaces into the original constituent sand grains. These are then flushed by rain down the kloofs and then to valley exits, locally at an elevation of about 1 230 m. Because of the perceptible surface slope of this farm to the east, due, presumably to bedrock configuration, the sand is then being transported along narrow channelways running in that general direction (Fig. 2). This

has resulted in sections along them that show up to 3.5 m of highly ferruginised river sand of limited lateral extent, cutting into and abutting on the red Aeolian^a Hutton Sands that cover most of Hopkins 486.

HERITAGE FINDINGS

Our initial foot survey of the eastern stream bed stretch, from where it enters Hopkins from the south (Fig 1) at 27° 43' 31.7" S, 22° 41' 36.7" E, to an old dam wall further downstream, at 27° 42' 56.8" S, 22° 41' 48.6" E, produced only three nondescript specimens on quartzite and jaspilite (Fig. 3).

The subsequent search involved a walk up to the Hopkins se Kloof mouth at 27° 43' 46.9" S, 22° 39' 50.5" E, and then along the channelway to some sand piles at 27° 43' 04.0" S, 22° 40' 09.0" E, which all yielded a further five items that are also undiagnostic, on quartzite, jaspilite and chert? (Fig. 4).

No actual sites, palaeontological bones or graves were seen on the farm.

CONCLUSIONS

The two inspected stream bed stretches produced occasional stone artefacts, but nowhere were there any occurrences of heritage significance and the conclusion is therefore that the proposed further recovery of river sand from there will have no impact on the heritage resources of the Northern Cape.

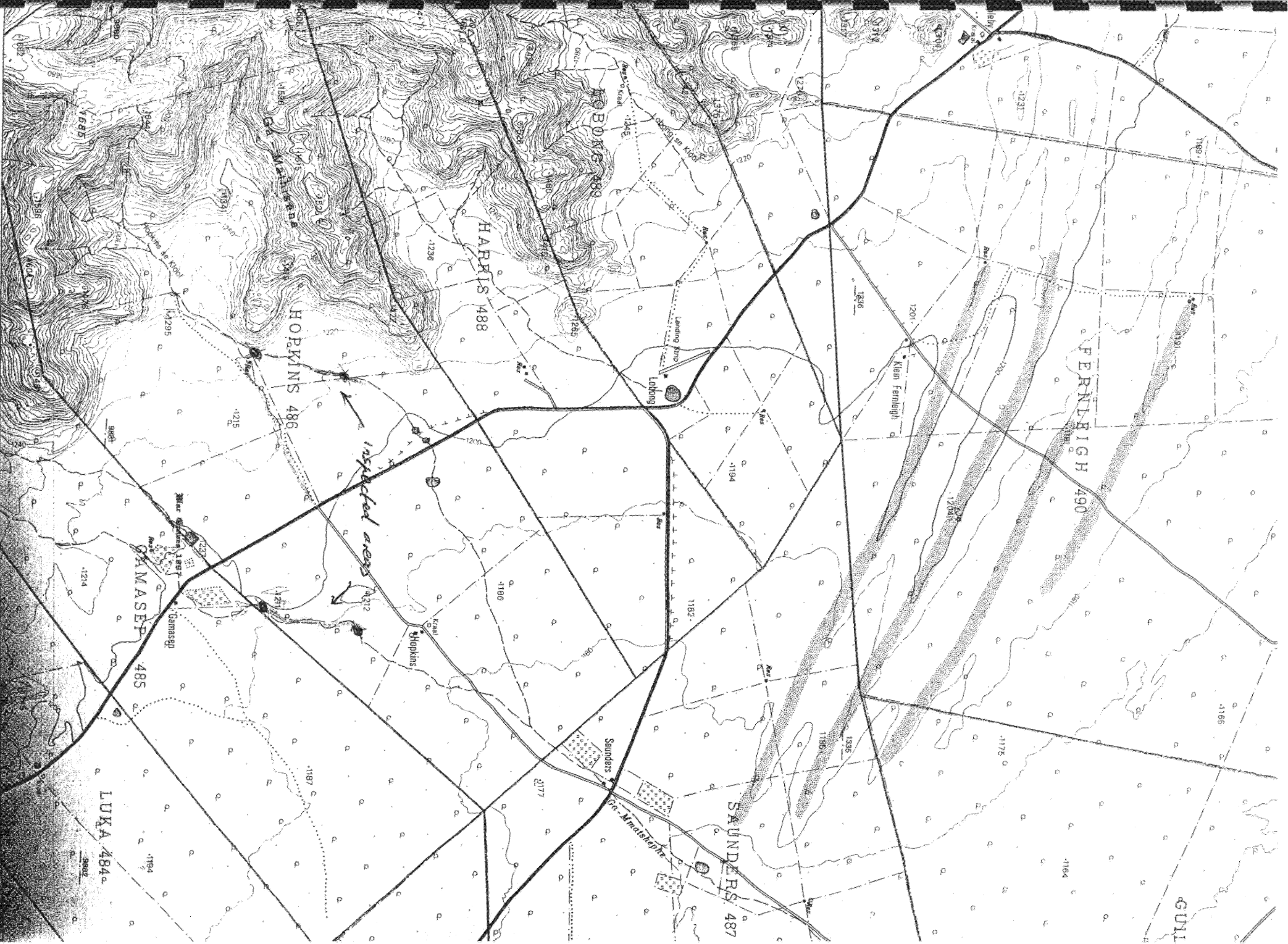
REFERENCE

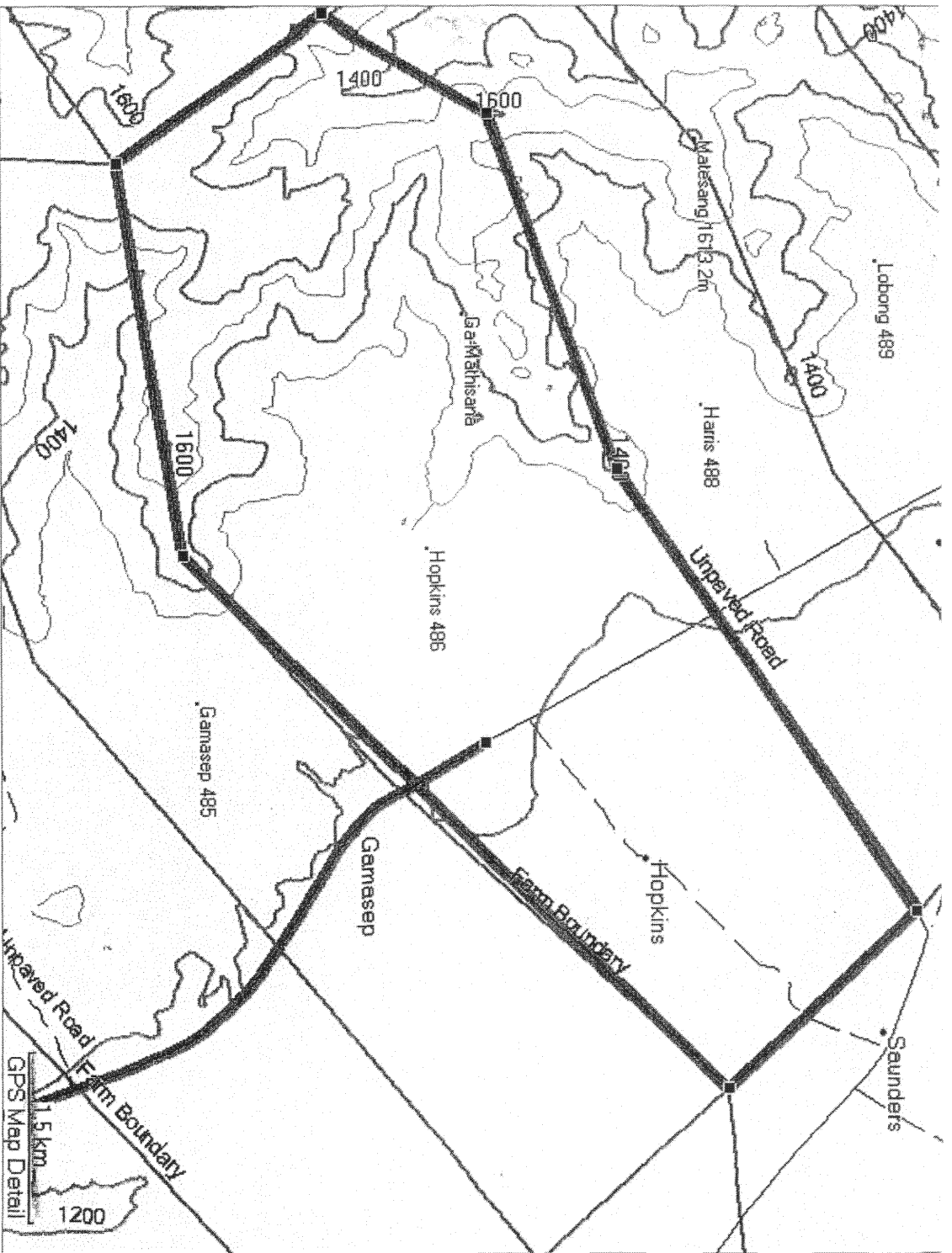
Beaumont, P. and Morris, D. 190. *Guide to the archaeological sites in the Northern Cape*. McGregor Museum, Kimberley.

NOTES

- A copy of the locality map and all other appended Figures must accompany this report to SAHRA.
- Applications to SAHRA will not be processed unless accompanied by payment of R150 per application. SAHRA banking details are: ABSA, Branch Code: 312109; Current Account no.: 360 680 606.

Fig. 2722 DA 4/11/44





MapIT (PTY) Ltd, Geotigin (PTY) Ltd, CSIR (Extracts from NLC)
LIC_745, Avric Trading ID 745
Chief Directorate: Surveys and Mapping - Copyright Authorization nr 11265

Fig 2.



Fig 2

Fig 3



Exotic paper tube

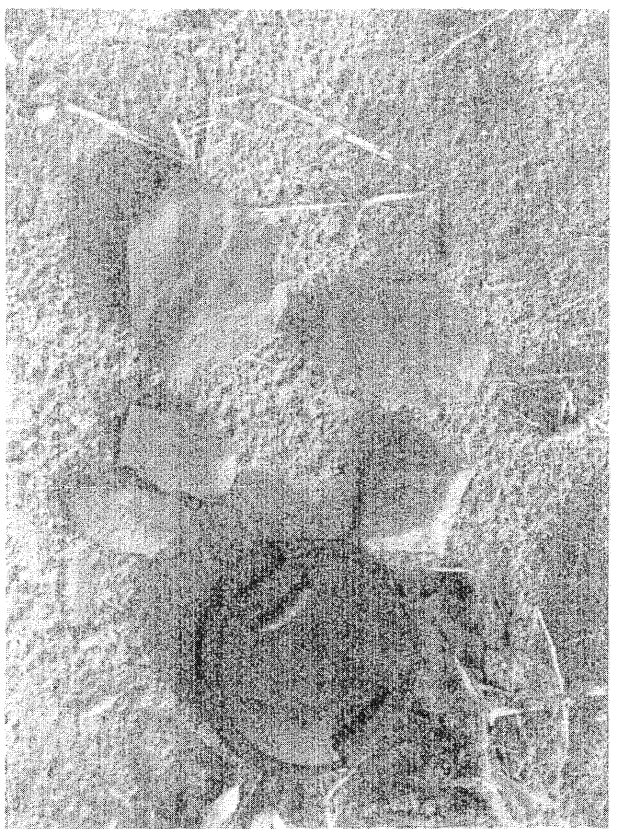
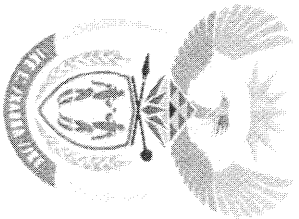
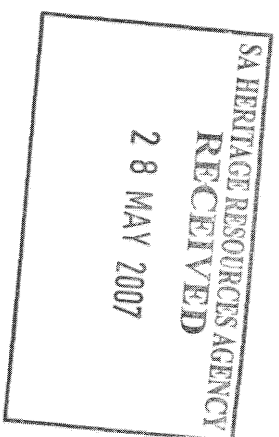


Fig 4.



the dme
Department:
Minerals and Energy
REPUBLIC OF SOUTH AFRICA



Private Bag X6093, Kimberley, 8300, Tel: (053) 8300 800, Fax: (053) 8325 631
First Floor, Liberty Corner, 29-31 Curry Street, Kimberley 8301

From: Directorate: Mineral Regulation: Northern Cape **Date:** 03/05/2007

Enquiries: Mrs. R. F. Sekepane **E-mail:** raisibe.sekepane@dme.gov.za
Ref: NC 30/5/1/2/3/2/1/11 EM

The Director
South African Heritage Resources Agency
PO Box 4637
CAPE TOWN
8000

Attention: MARY LESLIE

CONSULTATION IN TERMS OF SECTION 40 OF THE MINERAL AND PETROLEUM RESOURCES DEVELOPMENT ACT 2002, (ACT 28 OF 2002) FOR THE APPROVAL OF THE SCOPING REPORT AND EMPR FOR MINING RIGHT ON REMAINING EXTENT OF THE FARM HOPKINS 486 IN THE MAGESTRIAL DISTRICT OF KURUMAN, NORTHERN CAPE REGION.


APPLICANT: D. F MALAN.

Attached herewith, please find a copy of a Scoping Report and EMPR received from the above-mentioned applicant, for your comments.

It would be appreciated if you could forward any comments or requirements your Department may have to this office and to the applicant before **03 July 2007** as required by the Act.

Consultation in this regard has also been initiated with other relevant State Departments. In an attempt to expedite the consultation process please contact **Mrs. R.F Sekepane** of this office to make arrangements for a site inspection or for any other enquiries with regard to this application.

Your co-operation will be appreciated.


.....
REGIONAL MANAGER: MINERAL REGULATION
NORTHERN CAPE REGION