

**HERITAGE IMPACT ASSESSMENT
PROPOSED DEVELOPMENT
SILWERSTRAND GOLF & COUNTRY ESTATE
ROBERTSON**

Prepared for

ECOSENSE

By

Jonathan Kaplour

Agency for Cultural Resource Management
Specialists in Archaeological Studies & Heritage Resource Management

P.O. Box 159
Riebeeck West
7306

Ph/Fax: 022 461 2755

Cellular: 082 321 0172

E-mail: acrm@waccess.co.za

**DECEMBER
2001**

Executive summary

No significant heritage remains were located during a heritage impact assessment of the proposed Silwerstrand Golf and Country Estate in Robertson. *by whom?*

Four properties, comprising the proposed development, were searched for archaeological and other heritage remains. These included:

The existing Silwerstrand Holiday Resort.;

The municipal land on the opposite river bank to the holiday resort;

The existing Robertson Golf Club; and

The municipal land adjacent to the golf club.

? No heritage remains were located in the existing Silwerstrand Holiday Resort area.

The old thatched rondavels have been modified, although some retain their original doors, and these and the other modern buildings on the property are not considered to be historically significant.

No archaeological remains were located on the municipal land on the opposite riverbank to the holiday resort. The area is extremely well vegetated and archaeological visibility is consequently very low. A few tools were, however, found on recently cleared land adjacent to the municipal land.

No heritage remains were located in the existing Robertson Golf Club area. The labourer's cottages close to the clubhouse are not considered to be historically significant.

An old concrete weir, built at the turn of the last century over the Sand River, was located on land identified for future development in the existing Robertson Golf Course.

The curved weir, built of large, dry packed stone blocks and partially cemented, was one of three or four similar weirs constructed over the Sand river, in order to redirect water to nearby farms, before it flowed into the Breede River.

Although the weir has been damaged by fallen trees and has fallen into a state of disrepair and neglect, features such as these are protected under the National Heritage Resources Act and are considered to be of historical significance.

No heritage remains were located on the municipal land adjacent to the Golf Club. Some wooden and prefabricated cottages exist on this site, which is surrounded by Bluegum trees. The buildings are not considered to be historically significant.

The overall impact of the proposed development on heritage remains is considered to be low to negligible.

The probability of locating significant heritage remains during implementation of the project is also considered to be low.

The receiving environment is not considered to be archaeologically or historically sensitive, vulnerable or threatened.

With regard to the proposed Silverstrand Golf and Country Estate development in Robertson, the following heritage recommendations are made.

1. The concrete weir should be restored and incorporated into the proposed development.
2. Old photographs and paintings of the Silverstrand Holiday Resort exist in the Robertson Museum and these, along with other texts and local accounts, including old photographs of the concrete weir and other historical texts, could be used for display purposes, and incorporated into the overall development
3. No further detailed studies are required.

The above recommendations are subject to the approval of the South African Heritage Resource Agency.

1.0 INTRODUCTION

1.1 Background

Ecosense has requested that the Agency for Cultural Resource Management undertake a heritage impact assessment (HIA) of the proposed Silverstrand Golf and Country Estate in Robertson.

The aim of the HIA is to locate, identify and map archaeological and historical remains that may be negatively impacted by the planning, construction and implementation of the proposed development, and to propose measures to mitigate against the impact.

2.0 TERMS OF REFERENCE

The terms of reference for the HIA were:

1. to determine whether there are likely to be any archaeological or historical sites of significance within the proposed sites;
2. to identify and map any sites of archaeological and historical significance within the proposed development area;
3. to assess the sensitivity and conservation significance of archaeological and historical sites potentially affected by the proposed development;
4. to assess the significance of any impacts resulting from the proposed development, and
5. to identify mitigatory measures to protect and maintain any valuable archaeological and historical sites that may exist within the site.

3.0 THE STUDY SITE

The study site for the proposed development is illustrated in Figure 1.

Four properties, comprising the proposed development, were searched for archaeological and other heritage remains.

These included:

- The existing Silverstrand Holiday Resort.;
- The municipal land on the opposite river bank to the holiday resort;
- The existing Robertson Golf Club; and
- The municipal land adjacent to the golf club.

4.0 LEGISLATION

Archaeological sites and buildings over 60 years of age are protected under the National Heritage Resources Act (No. 25 of 1999). The Act came into effect on 01 April 2000, and replaces the National Monuments Act (No. 28 of 1969).

It is an offence to destroy, damage, excavate, alter, or remove from its original position, or collect, any archaeological material or object, without a permit issued by the South African Heritage Resources Agency (SAHRA).

5.0 STUDY APPROACH AND DOCUMENTATION OF ARCHAEOLOGICAL SITES

The approach used in the HIA entailed a detailed ground survey of the four properties.

6.0 RESULTS OF THE HERITAGE IMPACT ASSESSMENT

6.1 The existing Silverstrand Holiday Resort

No significant heritage remains were located in the existing Silverstrand Holiday Resort. The resort currently comprises flats/chalets, rondavels, caravan and camping sites, swimming pool, ablution and other facilities.

The old thatched rondavels have been modified and upgraded, although some retain their original doors (Figure 2). These and the other buildings (Figure 3), are not considered to be historically significant.

Significance of finds: **low**

Suggested mitigation: **none required**

6.2 The municipal land on the opposite river bank to the holiday resort

No archaeological remains were located on the municipal land. The area is extremely well vegetated and archaeological visibility is consequently very low. The probability of locating significant archaeological remains once the area has been cleared is considered to be low.

Three Early Stone Age¹ (ESA) flakes and some flaked and split cobbles were located in a recently cleared area adjacent to the municipal land. These remains are not considered to be significant.

6.3 The existing Robertson Golf Club

¹ A term referring to the period between 2 million and 250 000 years ago.

No significant heritage remains were located in the existing Robertson Golf Club area. Two labourer's cottages and a storage shed (Figures 4 & 5), located close to the golf clubhouse are not considered to be historically significant.

An old concrete weir, probably built at the turn of the last century over the Sand River (Mr Henries Bruwer pers. comm.), was located on land identified for future development of the existing Robertson Golf Course.

The curved weir (Figures 6 & 7), built of large, dry packed stone blocks and partially cemented was, according to Mr Bruwer (pers. comm.), was one of three or four similar weirs constructed over the Sand river, in order to redirect water to nearby farms, before it flowed into the Breede River.

Although the weir has been damaged by fallen trees and has fallen into a state of disrepair and neglect, features such as these are protected under the National Heritage Resources Act.

Significance of finds: high

Suggested mitigation: The weir should be restored and incorporated into the proposed development

6.4 The municipal land adjacent to the golf club

No heritage remains were located on the municipal land adjacent to the Golf Club. Some wooden and prefabricated cottages and huts exist on this site (Figures 8 & 9), which is entirely surrounded by Bluegum trees. According to a resident, Mr John Fowler, all the buildings were constructed sometime in the 1970's, and are not considered to be historically significant.

Significance of finds: low

Suggested mitigation: none required

7.0 IMPACT STATEMENT

The impact of the proposed Silwerstrand development on archaeological and historical sites/remains is considered to be low.

The probability of locating significant archaeological and historical sites during implementation of the project is also considered to be low.

8. CONCLUDING STATEMENT

In general, the receiving environment is not considered to be archaeologically or historically sensitive, vulnerable or threatened.

With regard to the proposed Silwerstrand Golf and Country Estate development in Robertson, the following heritage recommendations are made.

1. The concrete weir should be restored and incorporated into the proposed development.
2. Old photographs and paintings of the Silwerstrand Holiday Resort exist in the Robertson Museum and these, along with other texts and local accounts, including old photographs of the concrete weir and other historical texts, could be used for display purposes, and incorporated into the overall development
3. No further detailed studies are required.

The above recommendations are subject to the approval of the South African Heritage Resources Agency.



Figure 1. Heritage Impact Assessment, Silwerstrand Golf and Country Estate, Robertson.

11/11/11

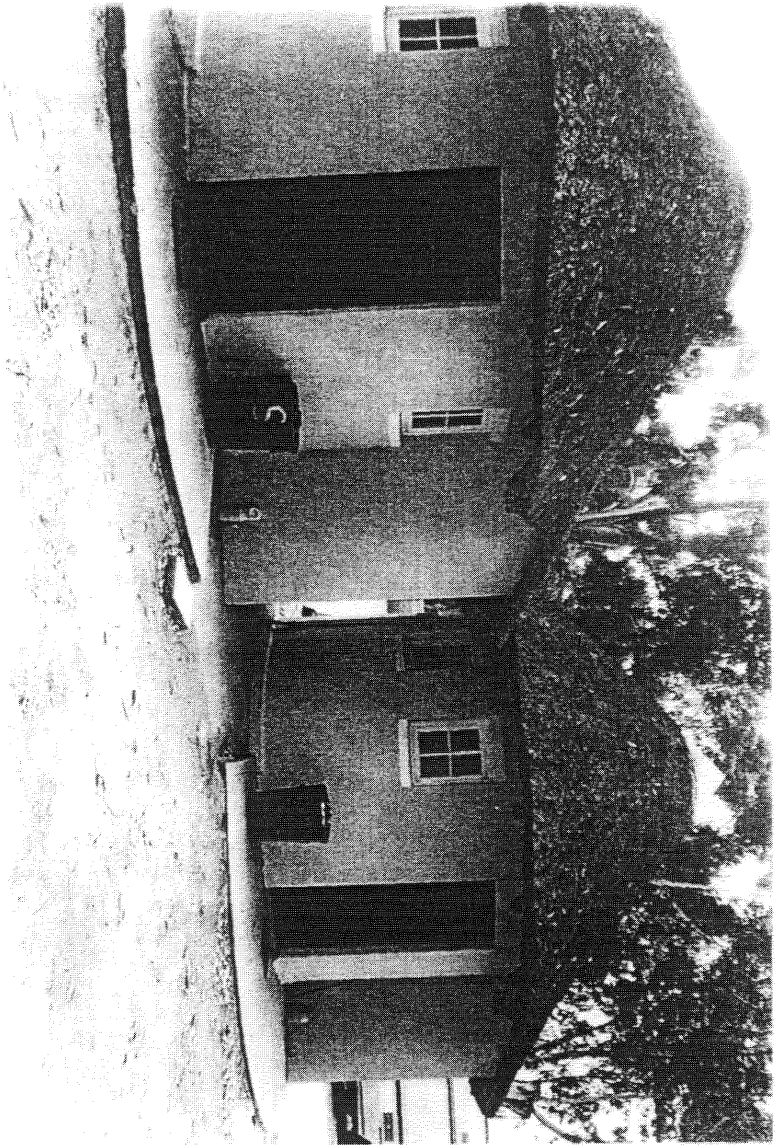


Figure 2: Heritage Impact Assessment, Silverstrand Golf and Country Estate, Robertson; Photograph: Silverstrand Holiday Resort

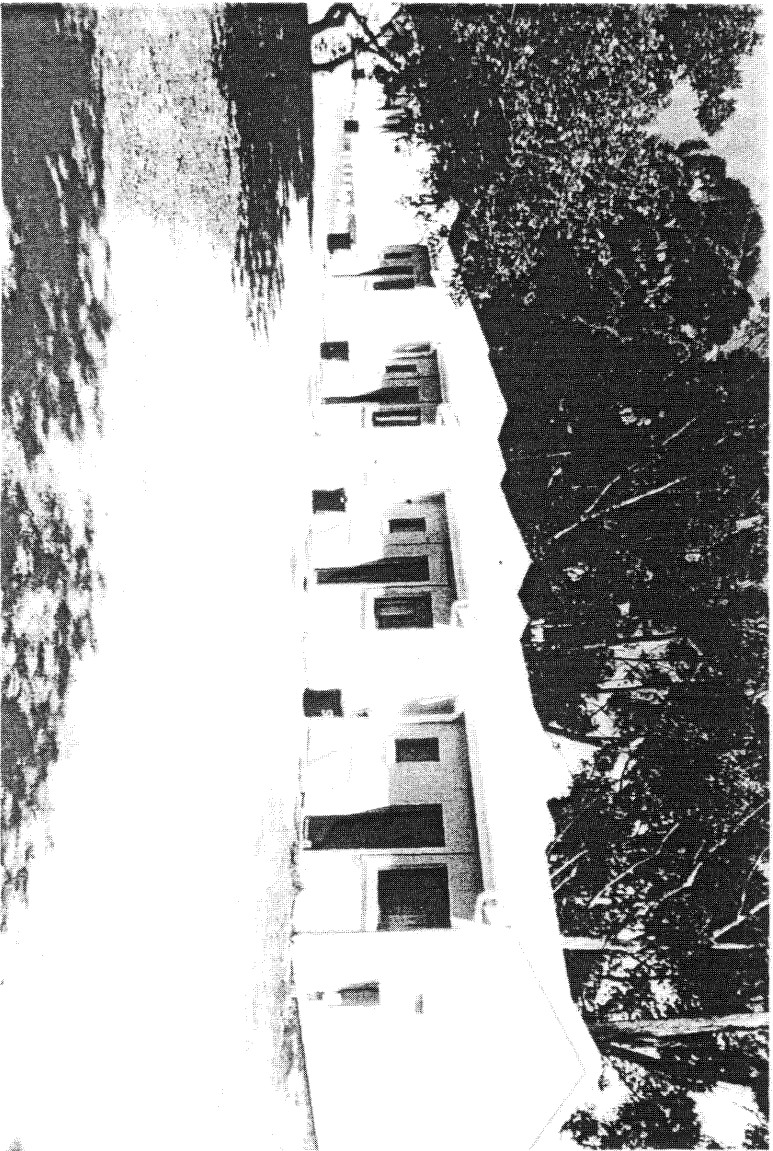


Figure 3: Heritage Impact Assessment, Silverstrand Golf and Country Estate, Robertson; Photograph: Silverstrand Holiday Resort

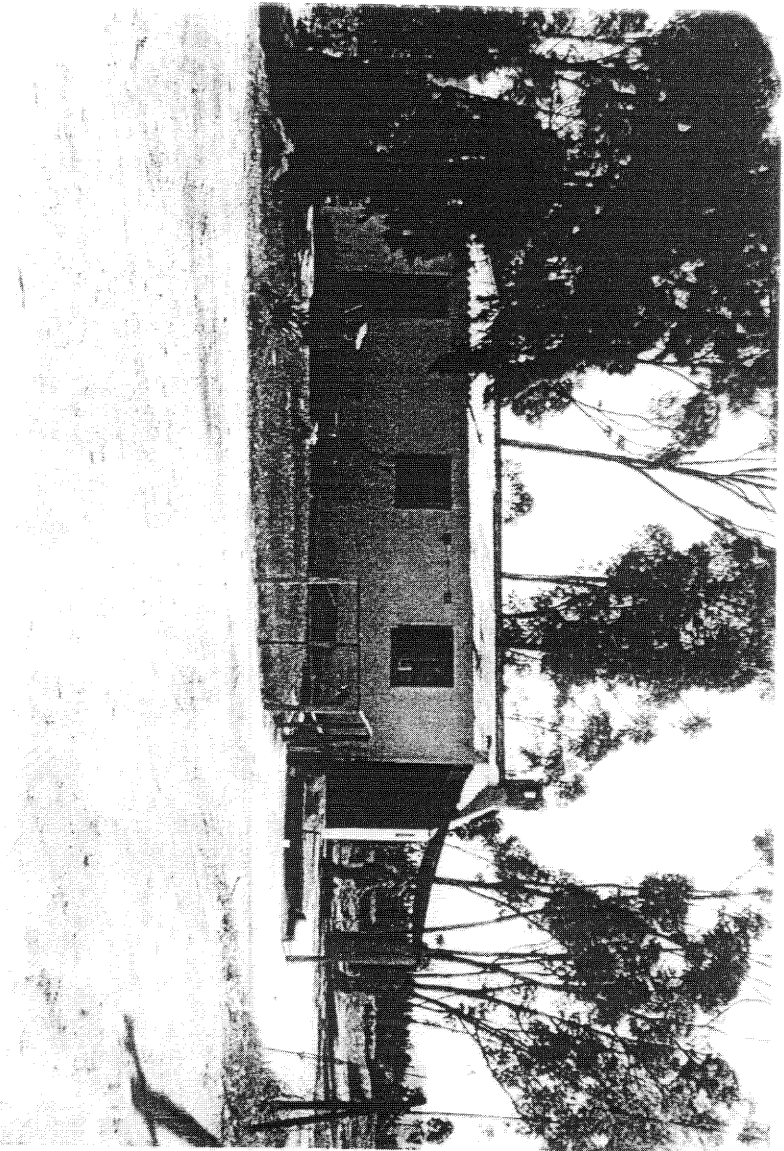


Figure 4. Heritage Impact Assessment, Silverstrand Golf and Country Estate, Robertson; Labourer's cottage, Robertson Golf Club

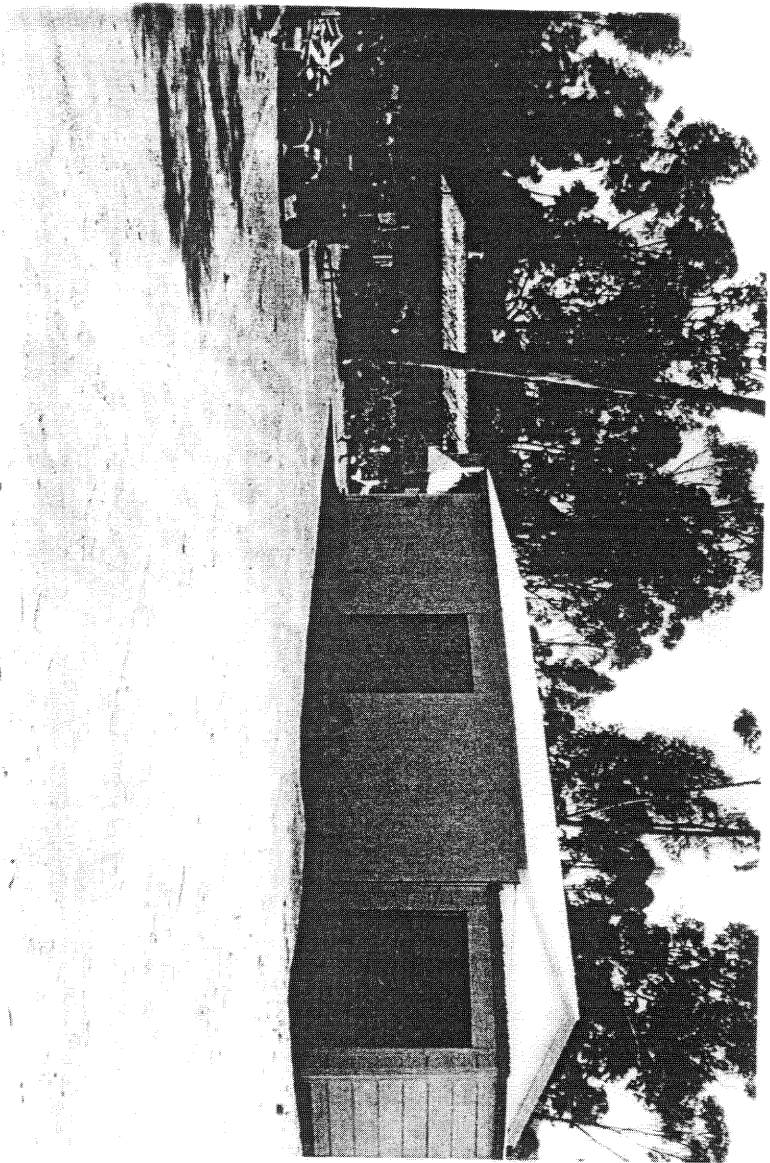


Figure 5. Heritage Impact Assessment, Silverstrand Golf and Country Estate, Robertson; Labourer's cottage, Robertson Golf Club

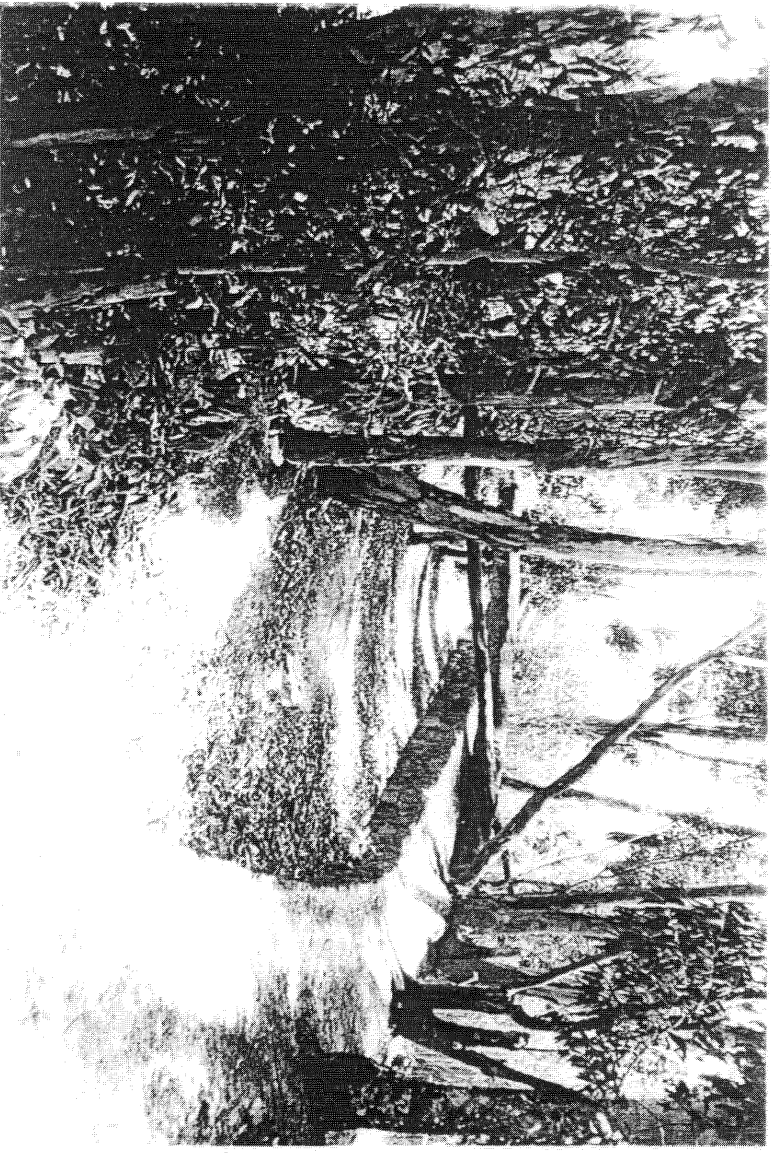


Figure 6. Heritage Impact Assessment, Silverstrand Golf and Country Estate, Robertson: Stone bull weir.

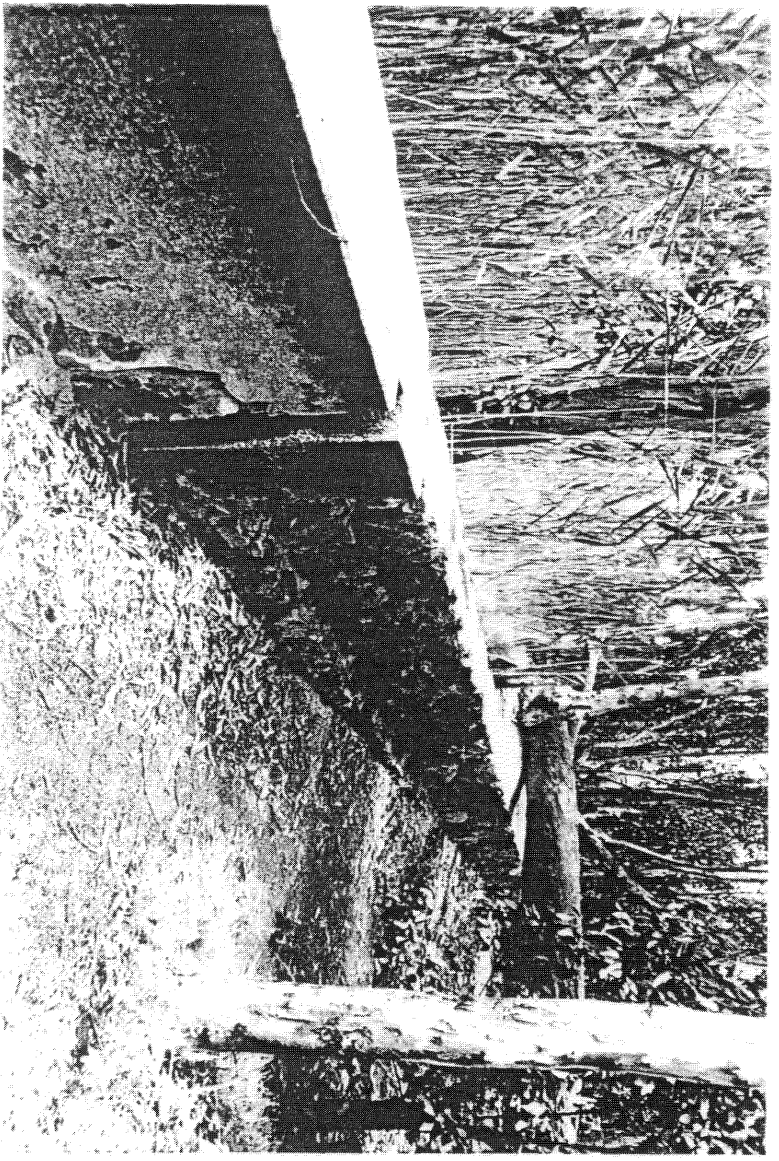


Figure 7. Heritage Impact Assessment, Silverstrand Golf and Country Estate, Robertson: Stone bull weir.

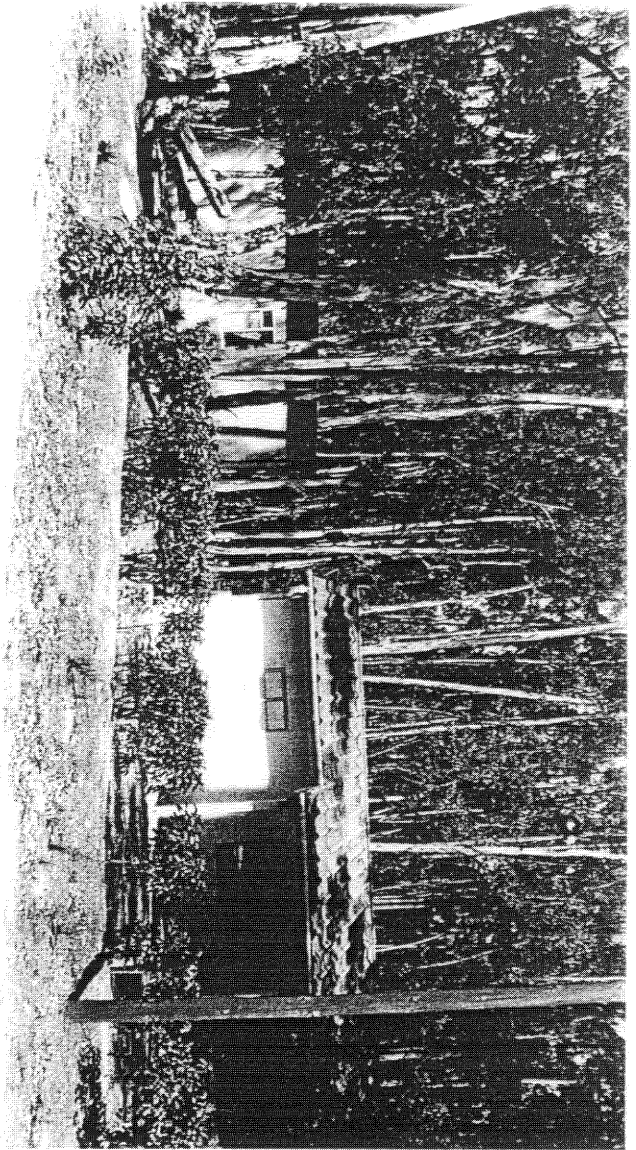


Figure 8. Heritage Impact Assessment, Silverstrand Golf and Country Estate, Robertson: prefabricated cottages, municipal land adjacent to the Golf Club.



Figure 9. Heritage Impact Assessment, Silverstrand Golf and Country Estate, Robertson: wooden huts, municipal land adjacent to the Golf Club.