

# Agency for Cultural Resource Management

Specialists in Archaeological Studies and Heritage Resource Management

PO Box 159 Riebeeck West 7306 Phone/Fax 022-461 2755  
E-mail: [acrm@wcaccess.co.za](mailto:acrm@wcaccess.co.za) Cellular: 082 321 0172

**03 February, 2005**

Ms Cornelia van Zyl  
I.C. @ Plan  
Town Planners  
10 A Pastorie Park  
Somerset West  
7130



Dear Ms Van Zyl

## **PHASE 1 ARCHAEOLOGICAL IMPACT ASSESSMENT ERF 13340 SOMERSET WEST WESTERN CAPE PROVINCE**

### **1. Introduction and brief**

I.C. @ Plan Town Planners<sup>1</sup>, on behalf of Mr D. Fourie requested that the Agency for Cultural Resource Management conduct a Phase 1 Archaeological Impact Assessment for a proposed development on Erf 13340 Somerset West, in the Western Cape Province.

The subject property is currently zoned Agriculture and will be rezoned to Subdivisional area for four single residential erven, three private open space erven and a private road.

The extent of the proposed project (about 1.0 ha) falls within the requirements for an archaeological impact assessment as required by Section 38 of the South African Heritage Resources Act (No. 25 of 1999).

A locality map is illustrated in Figure 1.

An aerial photograph of the proposed site is illustrated in Figure 2.

### **2. Terms of reference**

The Terms of Reference for the Phase 1 Archaeological Impact Assessment are to:

- Identify and map heritage resources on the proposed site;
- Determine the importance of heritage resources on the proposed site;
- Determine and assess the potential impacts of the proposed development on the heritage resources, and
- Recommend mitigation measures to minimise impacts associated with the proposed development.

<sup>1</sup> IC@ Plan is represented by Ms Cornelia van Zyl. Fax No. 850 0401



A 'Notification to Heritage Western Cape of Intent to Develop' checklist has been completed by the archaeologist, and together with the specialist archaeology report, has been submitted to Heritage Western Cape Built Environment and Landscape Committee (BELCOM) for comment.

### **3. The site**

Erf 13340 Somerset West (S° 34 03 105 E 18° 48 374 on map datum wgs 84) is located in Bredell Street which is accessed from the R44 between Stellenbosch and Somerset West. The receiving environment is already severely altered and disturbed (Figure 3). A large modern residential home and garden is located on the property. A retention pond is situated in the north western portion of the property (Figure 4). There are no significant landscape features on the site. The surrounding land use is single residential properties, private townships and farm lands.

### **4. Approach to the study**

The property was subjected to a foot survey.

The site visit and assessment took place on the 03 February, 2005

### **5. Results of the study**

No pre-colonial archaeological heritage remains were located on the property.

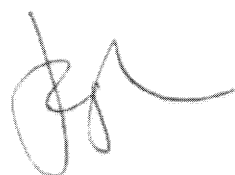
The impact of the proposed development on archaeological heritage remains is likely to be very low.

The probability of locating significant archaeological heritage remains during implementation of the project is likely to be highly improbable.

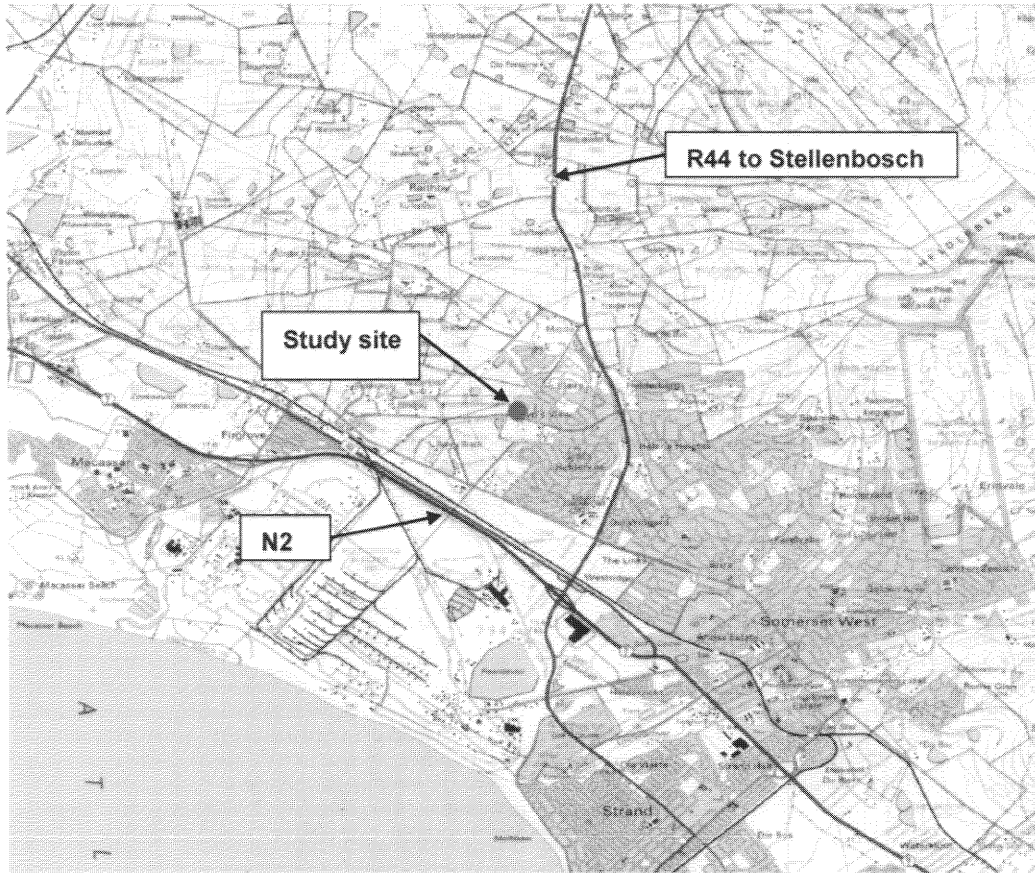
### **6. Conclusion**

The archaeological assessment has shown that Erf 33249, The Strand, is suitable for development.

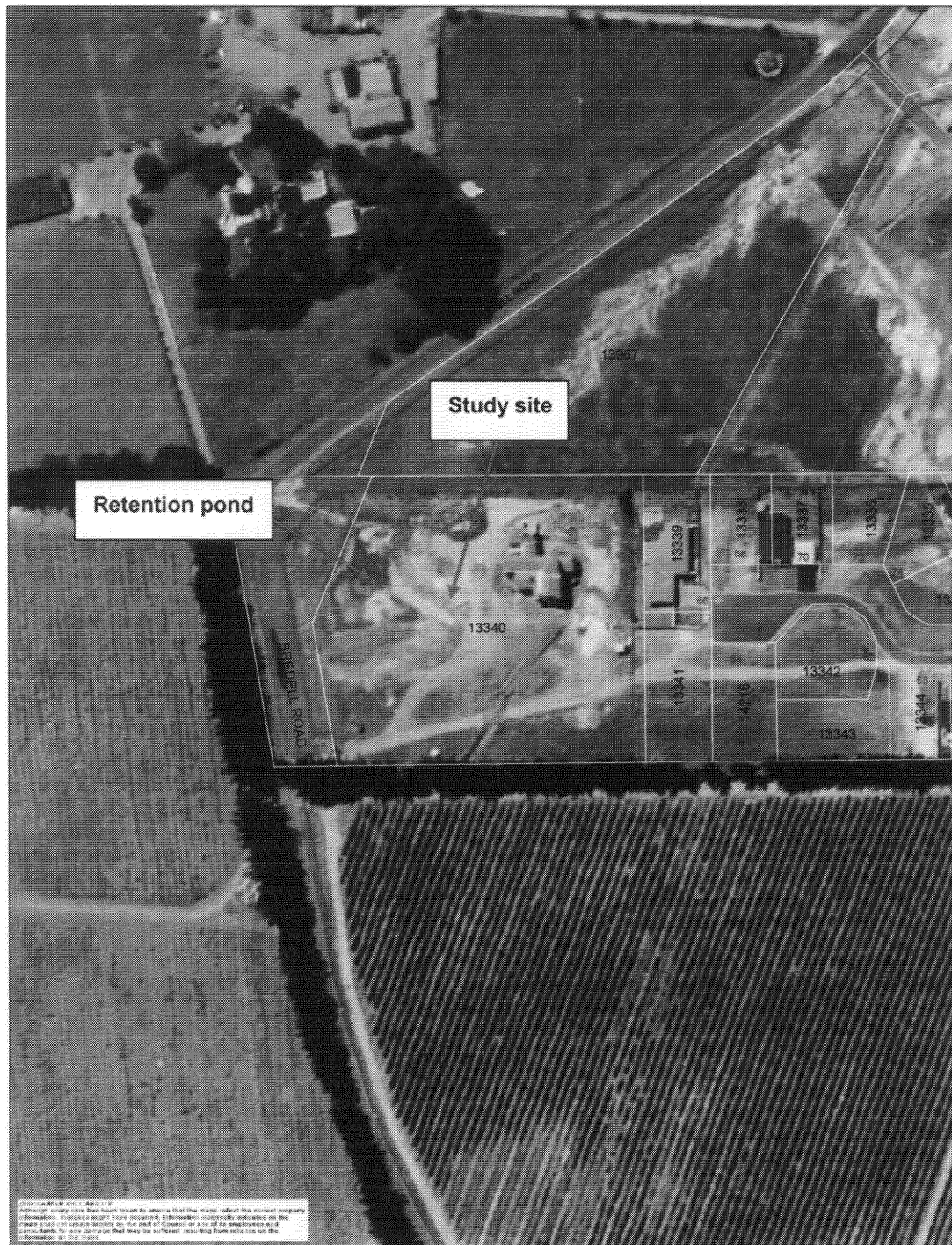
Yours sincerely



Jonathan Kaplan



**Figure 1. Locality Map (3418 BB Somerset West)**



**Figure 2. Aerial photograph of the study site**



**Figure 3. View of the site facing north**



**Figure 4. View of the site facing south.  
The retention pond is the middle of the plate. The main  
house is to the left of the retention pond.**